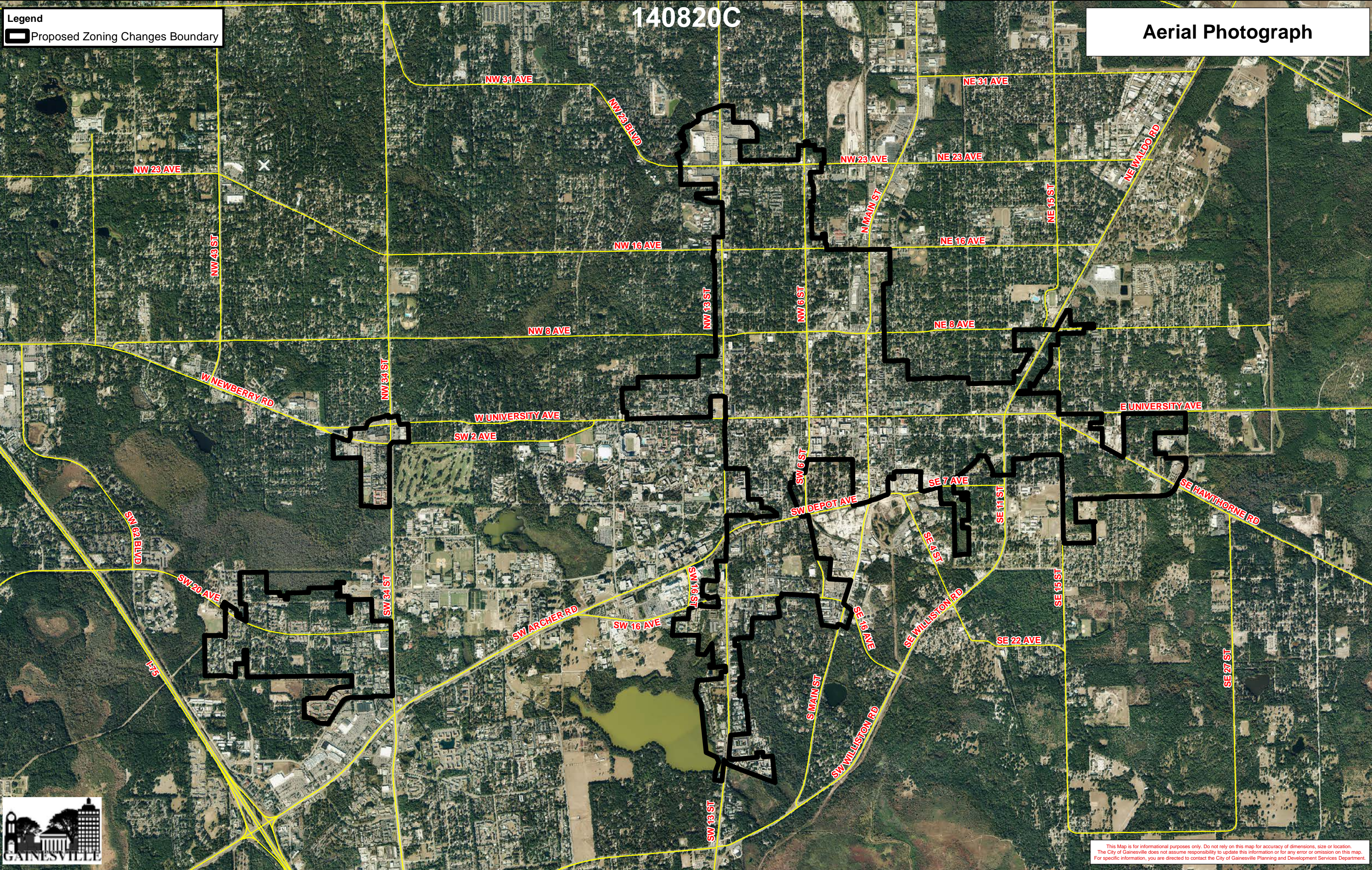


Legend
Proposed Zoning Changes Boundary

140820C

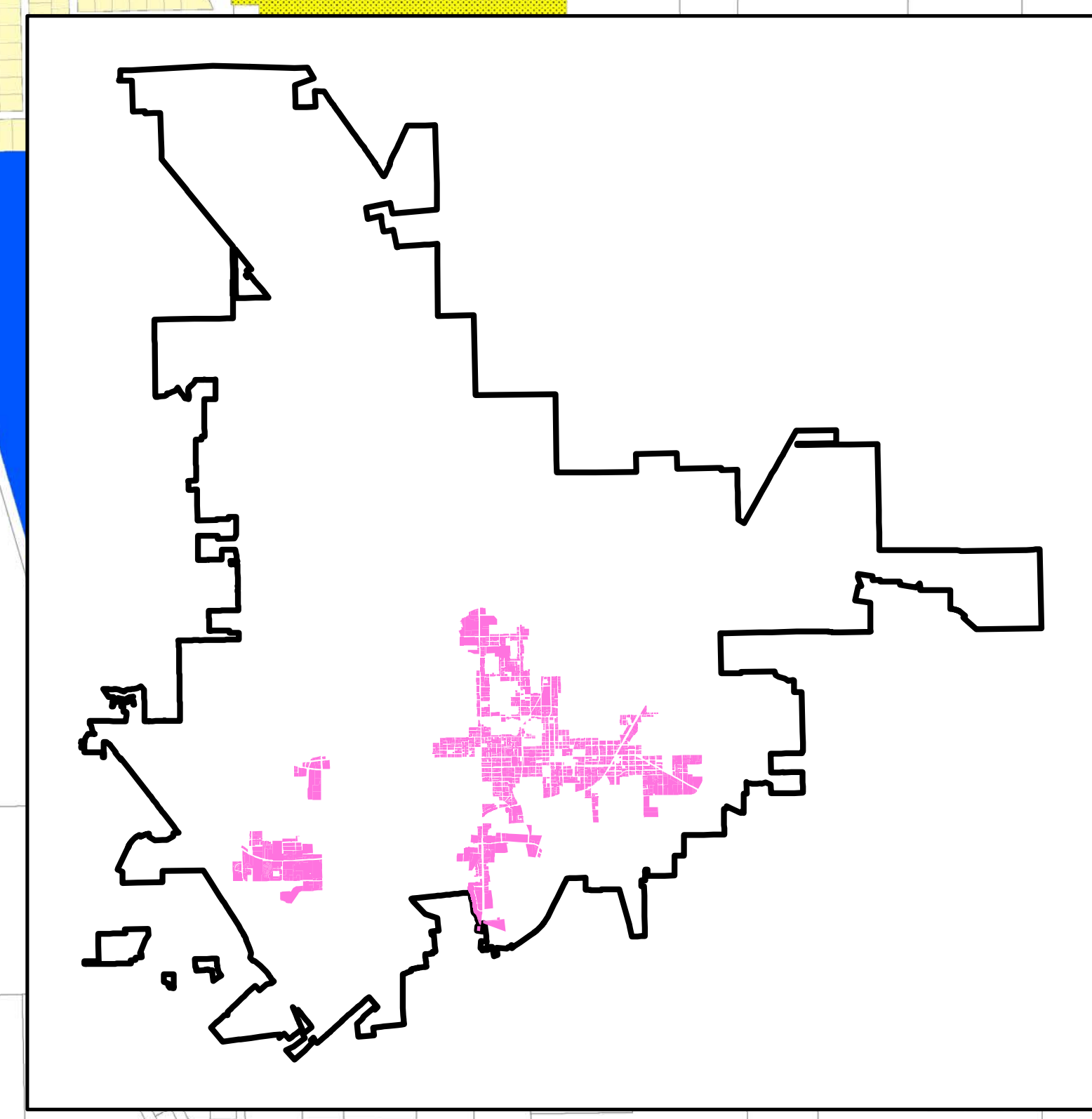
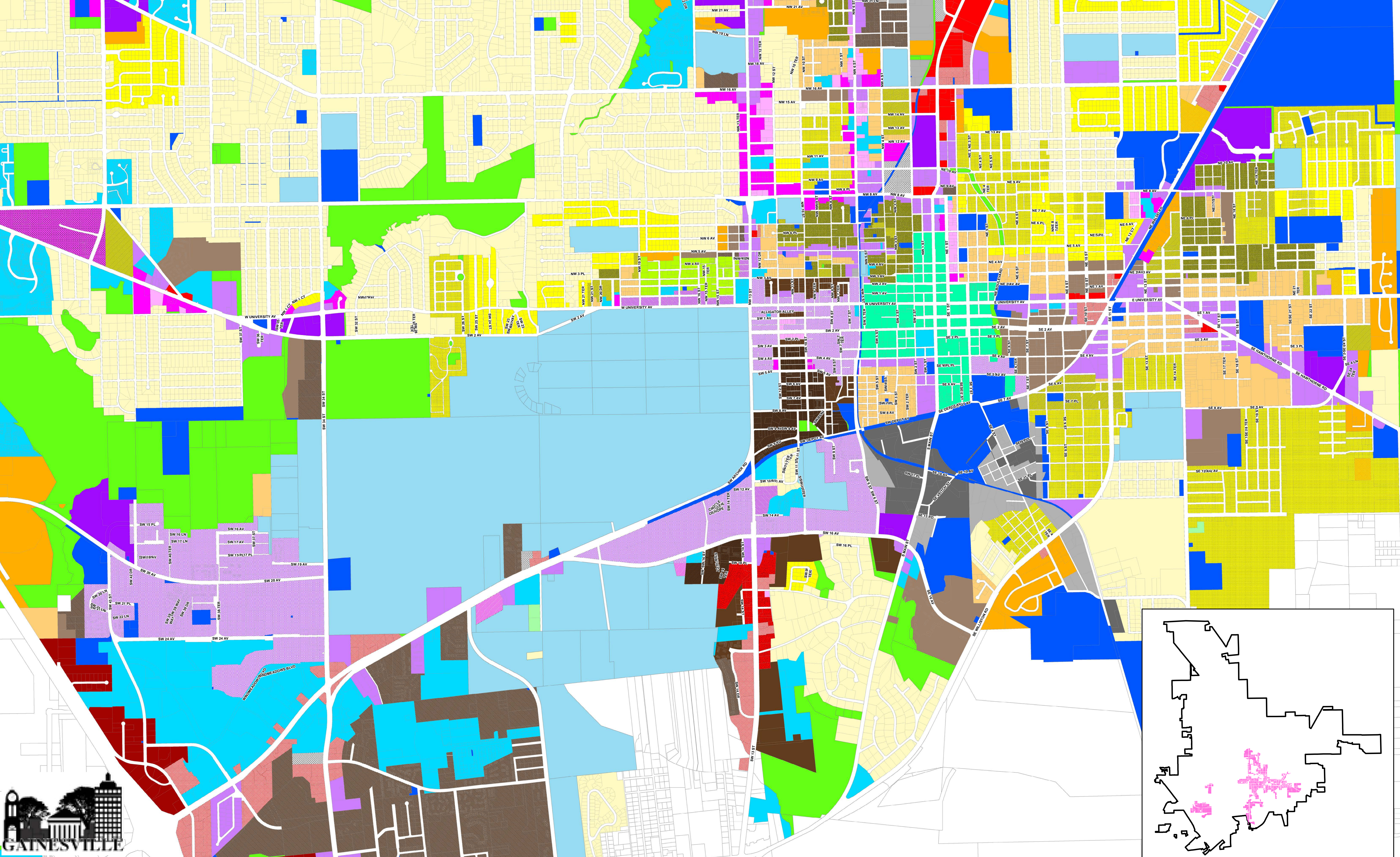
Aerial Photograph



This Map is for informational purposes only. Do not rely on this map for accuracy of dimensions, size or location. The City of Gainesville does not assume responsibility to update this information or for any error or omission on this map. For specific information, you are directed to contact the City of Gainesville Planning and Development Services Department.

Proposed Area for Zoning Changes Existing Zoning

Existing Zoning	
	AF: Airport Facility
	AGR: Agriculture
	BA: Automotive-Oriented Business
	BI: Business Industrial
	BT: Tourist-Oriented Business
	BUS: General Business District
	CCD: Central City District
	CON: Conservation
	CP: Corporate Park
	ED: Educational Services
	I-1: Limited Industrial
	I-2: General Industrial
	MD: Medical Services
	MH: Mobile Home Residential
	MU-1: Mixed Use Low Intensity
	MU-2: Mixed Use Medium Intensity
	OF: General Office
	OR: Office Residential
	PD: Planned Development
	PS: Public Services and Operations
	RC: Residential Conservation
	RH-1: Residential High Density
	RH-2: Residential High Density
	RMF-5: Single-Family/Multiple-Family Residential
	RMF-6: Multiple-Family Residential
	RMF-7: Multiple-Family Residential
	RMF-8: Multiple-Family Residential
	RMU: Residential Mixed Use
	RSF-1: Single-Family Residential
	RSF-2: Single-Family Residential
	RSF-3: Single-Family Residential
	RSF-4: Single-Family Residential
	UMU-1: Urban Mixed-Use
	UMU-2: Urban Mixed-Use
	W: Warehousing and Wholesaling



This Map is for informational purposes only. Do not rely on this map for accuracy of dimensions, size or location. The City of Gainesville does not assume responsibility to update this information or for any error or omission on this map. For specific information, you are directed to contact the City of Gainesville Planning and Development Services Department.

Legend

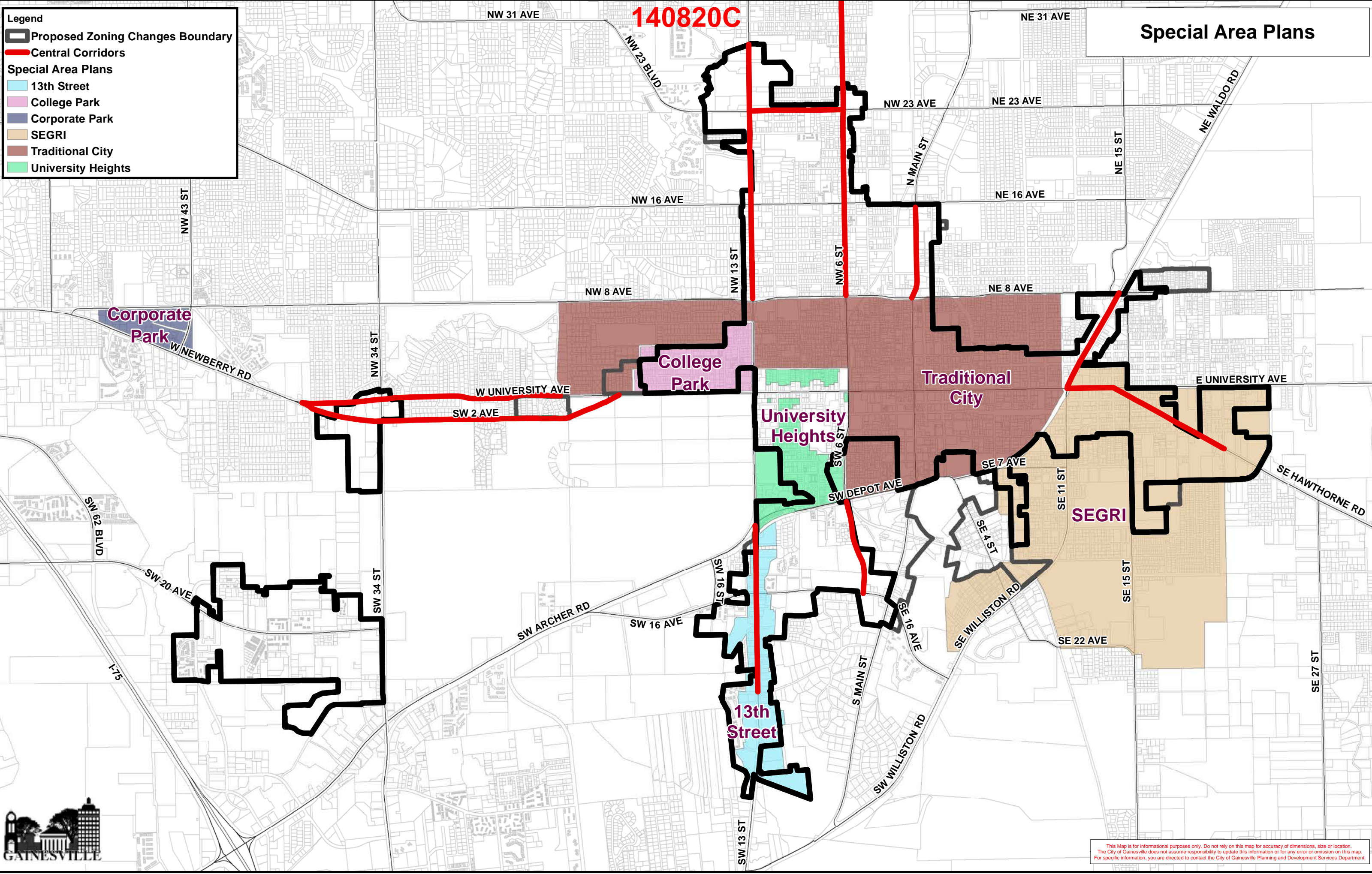
- Proposed Zoning Changes Boundary
- Central Corridors

Special Area Plans

- 13th Street
- College Park
- Corporate Park
- SEGRI
- Traditional City
- University Heights

Special Area Plans

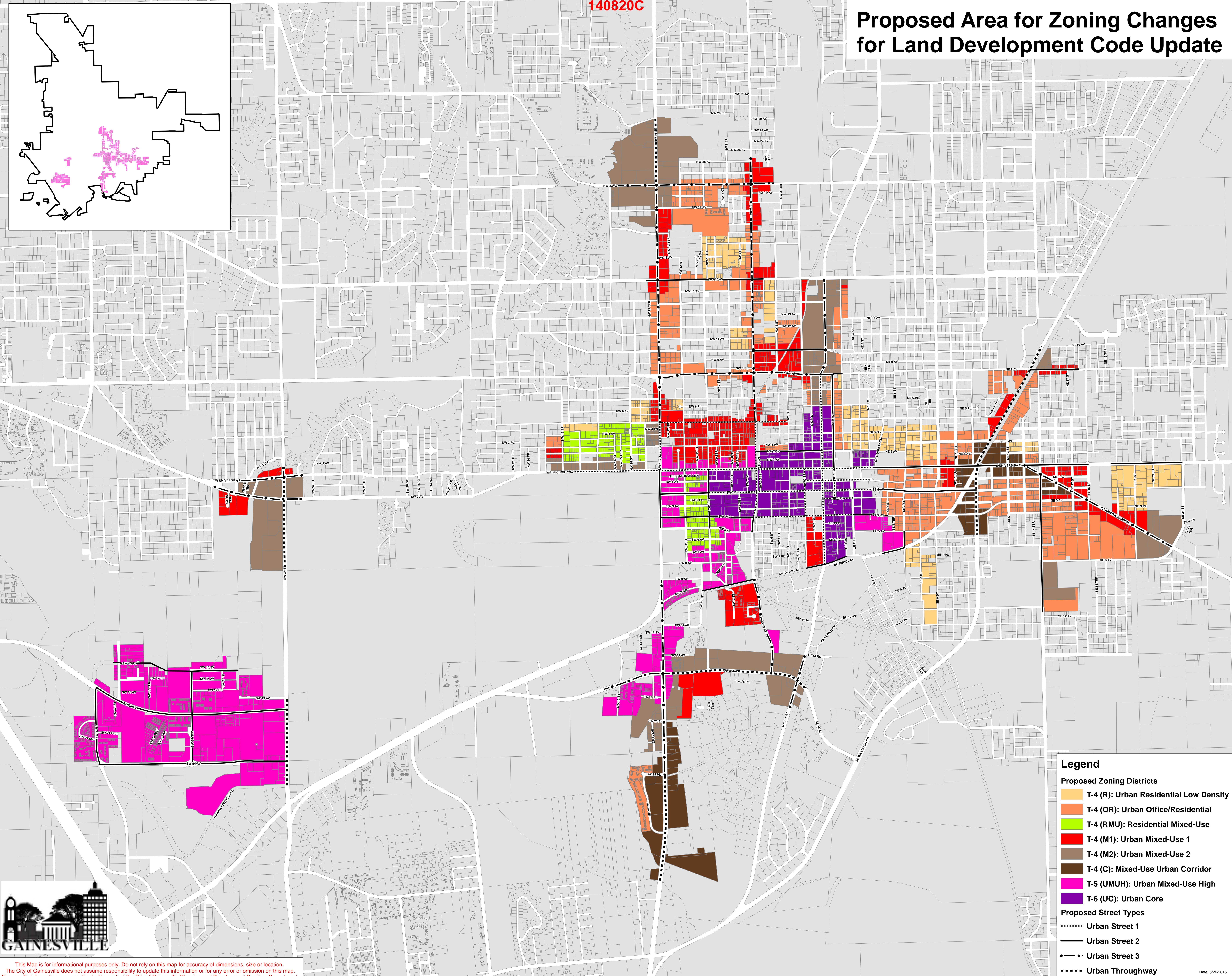
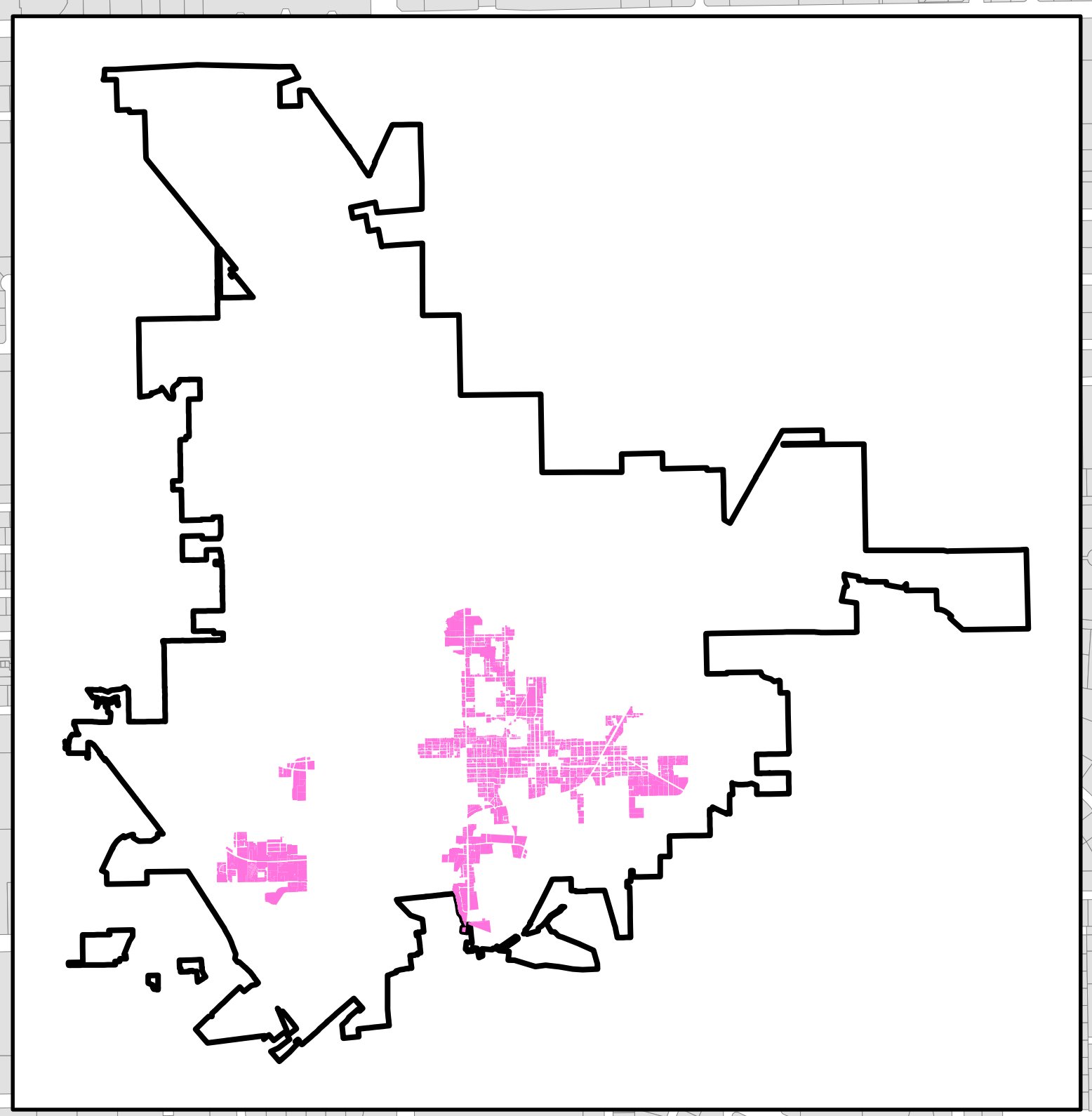
140820C



This Map is for informational purposes only. Do not rely on this map for accuracy of dimensions, size or location. The City of Gainesville does not assume responsibility to update this information or for any error or omission on this map. For specific information, you are directed to contact the City of Gainesville Planning and Development Services Department.

140820C

Proposed Area for Zoning Changes for Land Development Code Update



Legend

Proposed Zoning Districts

- T-4 (R): Urban Residential Low Density
- T-4 (OR): Urban Office/Residential
- T-4 (RMU): Residential Mixed-Use
- T-4 (M1): Urban Mixed-Use 1
- T-4 (M2): Urban Mixed-Use 2
- T-4 (C): Mixed-Use Urban Corridor
- T-5 (UMUH): Urban Mixed-Use High
- T-6 (UC): Urban Core

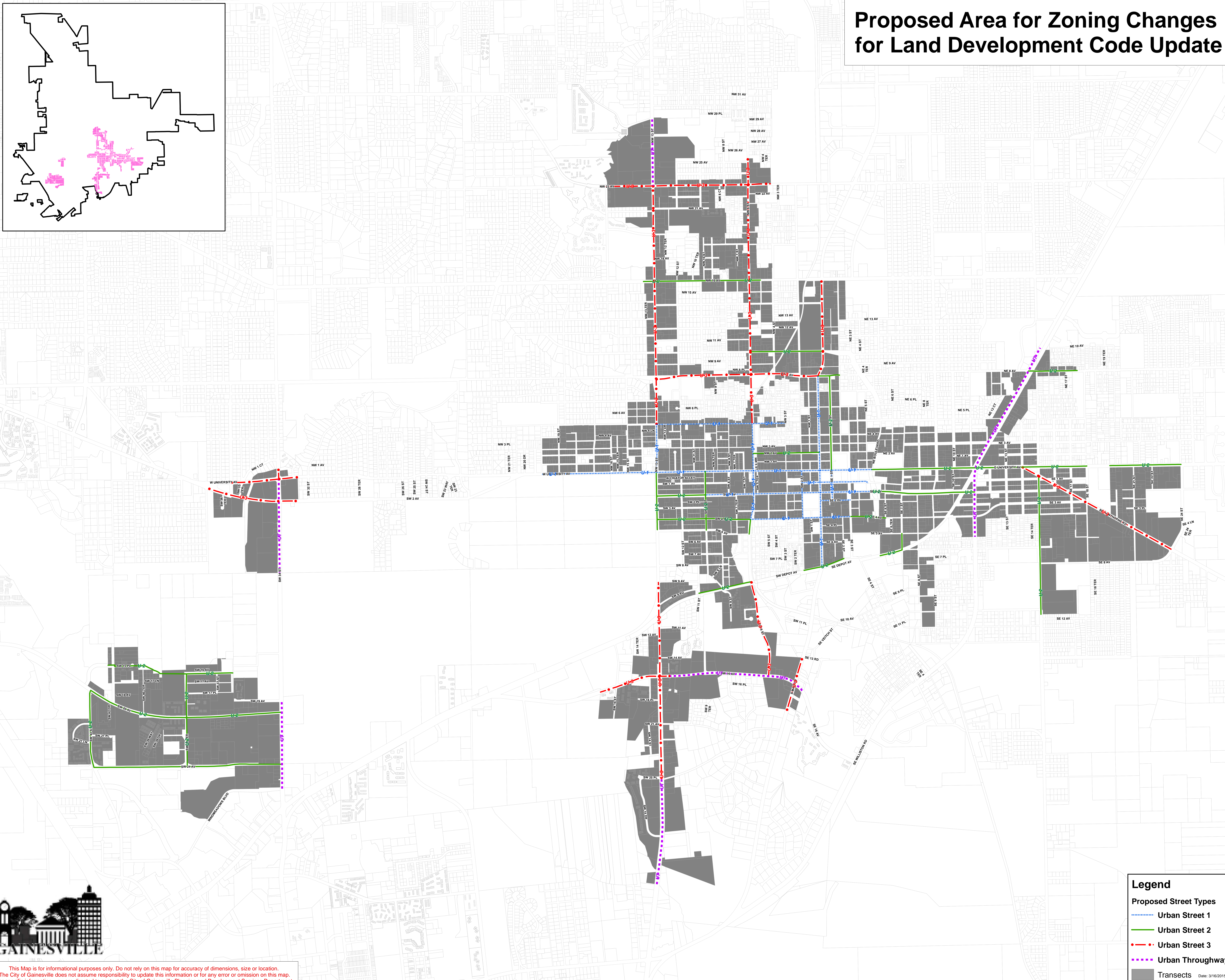
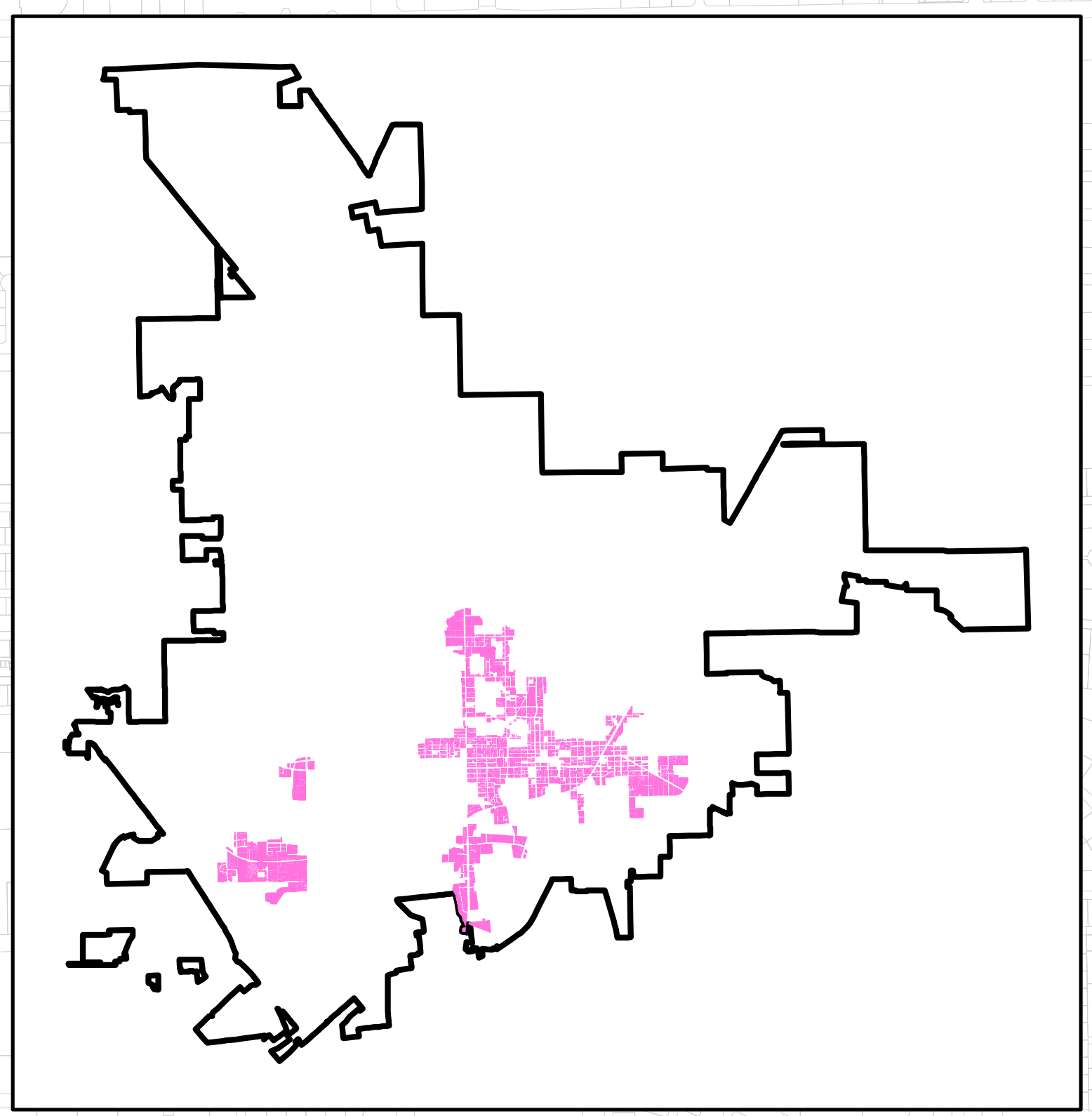
Proposed Street Types

- Urban Street 1
- Urban Street 2
- Urban Street 3
- Urban Throughway



This Map is for informational purposes only. Do not rely on this map for accuracy of dimensions, size or location. The City of Gainesville does not assume responsibility to update this information or for any error or omission on this map. For specific information, you are directed to contact the City of Gainesville Planning and Development Services Department.





Proposed Area for Zoning Changes for Land Development Code Update




This Map is for informational purposes only. Do not rely on this map for accuracy of dimensions, size or location. The City of Gainesville does not assume responsibility to update this information or for any error or omission on this map. For specific information, you are directed to contact the City of Gainesville Planning and Development Services Department.

Legend

Proposed Street Types

-  Urban Street 1
-  Urban Street 2
-  Urban Street 3
-  Urban Throughway

 Transects

Date: 3/16/2015