

# FUTURE LAND USE ELEMENT

## Historic Preservation Map Series: Pleasant Street Historic District

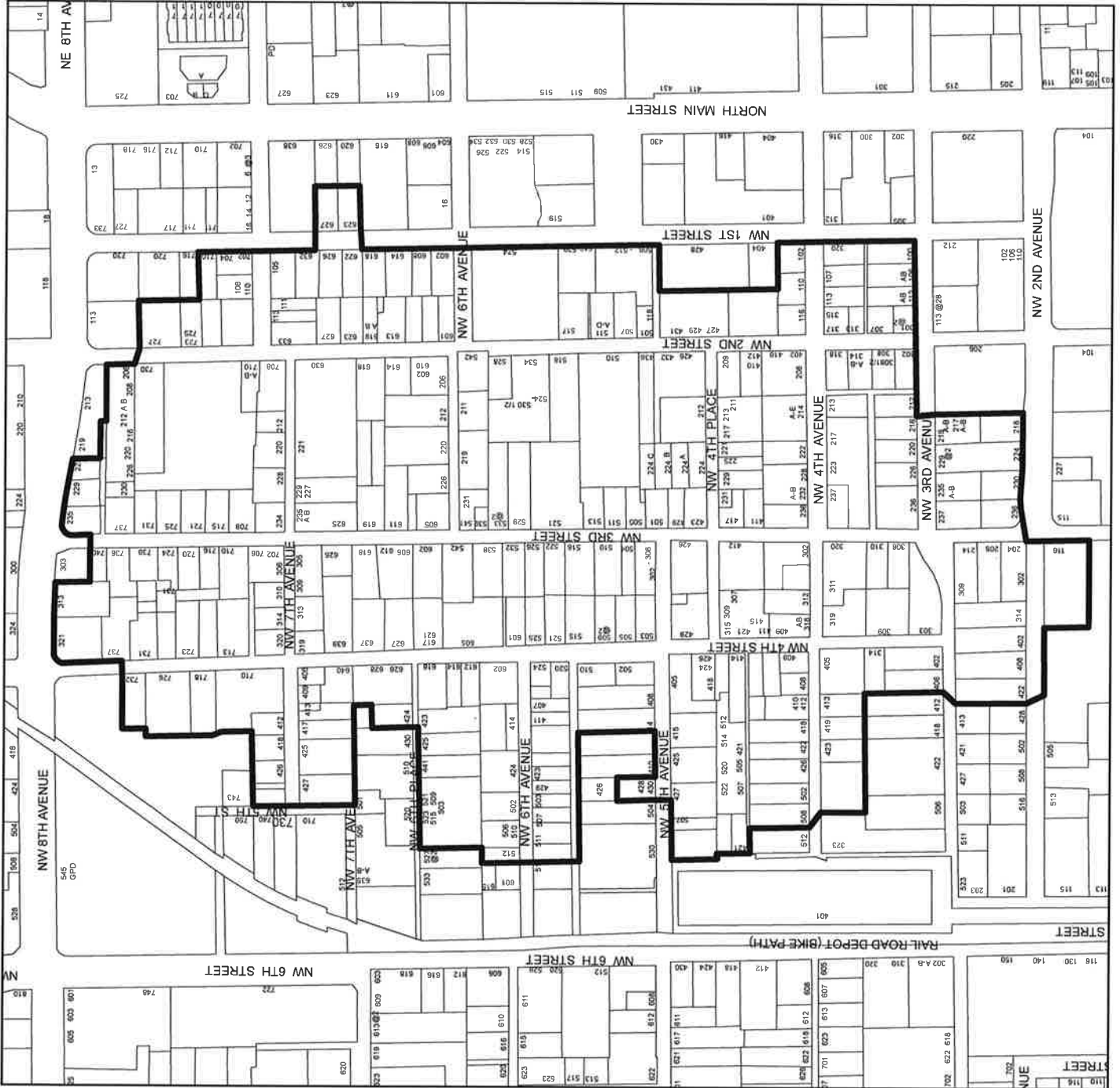
Historic District Boundary



140693C

City of Gainesville, Florida

Prepared by the Planning and  
Development Services Department  
January 2015



# FUTURE LAND USE ELEMENT

Historic Preservation Map Series:  
Northeast Gainesville  
Residential Historic District

Historic District Boundary



EXHIBIT

A-2

140693C

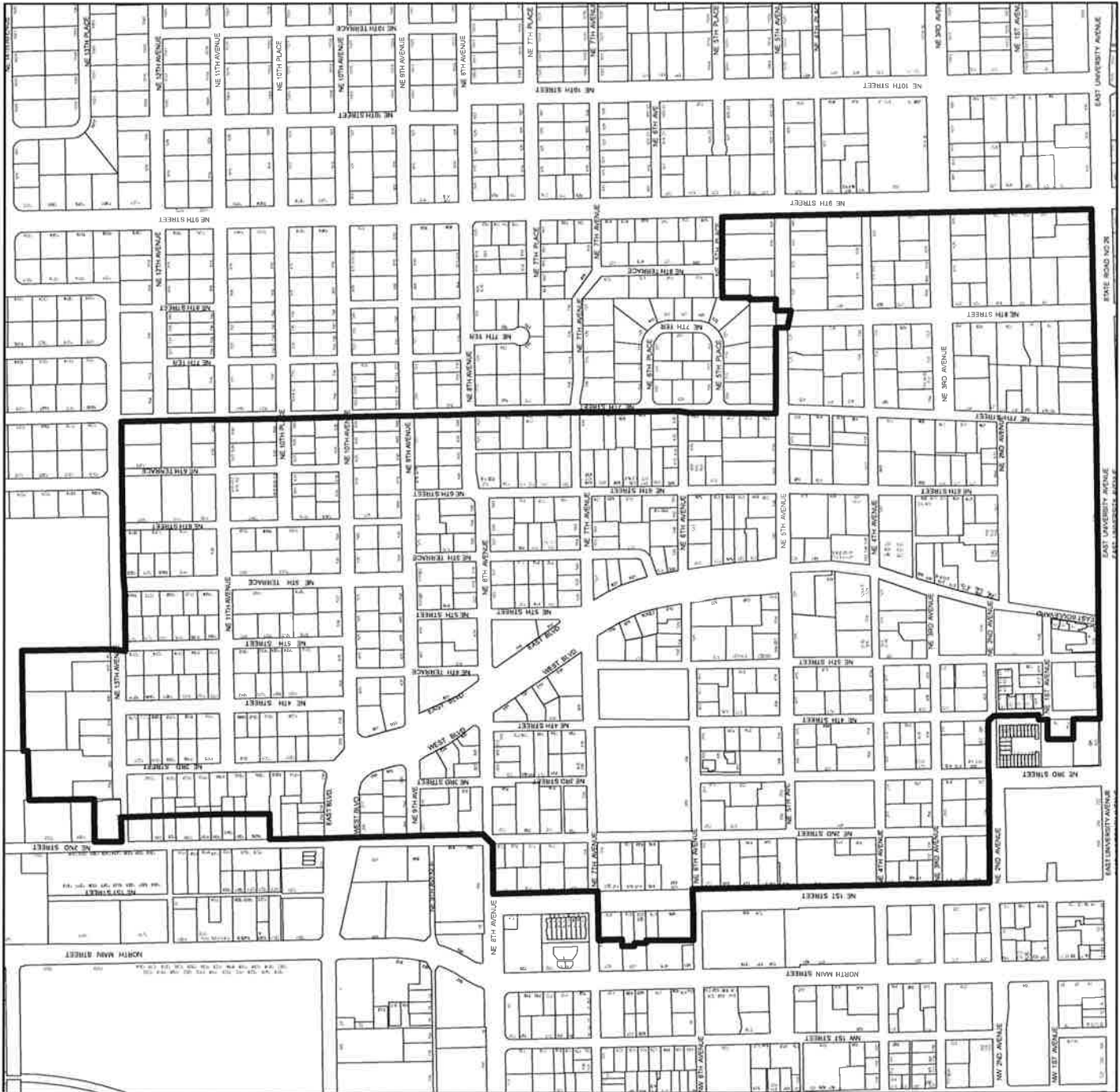
City of Gainesville, Florida

Prepared by the Planning and  
Development Services Department  
January 2015



0 495 990 Feet

0 495 990 Feet



# FUTURE LAND USE ELEMENT

Historic Preservation Map Series:  
Southeast Gainesville Historic District

Historic District Boundary



EXHIBIT

A-3

140693C

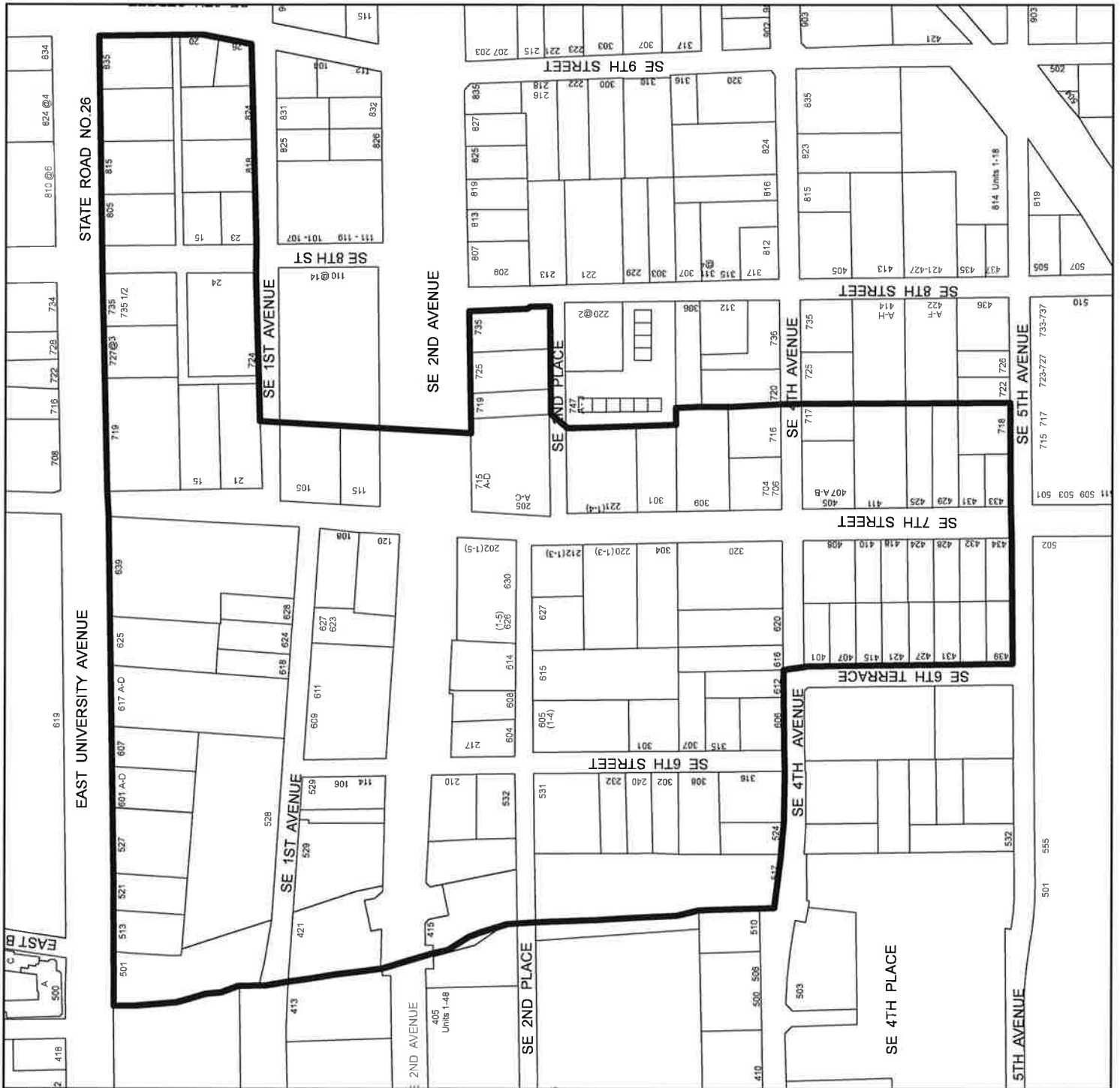
City of Gainesville, Florida

Prepared by the Planning and  
Development Services Department  
January 2015

N



0 95 190 380 Feet



# FUTURE LAND USE ELEMENT

Historic Preservation Map Series:  
University Heights Historic  
District - North

Historic District Boundary



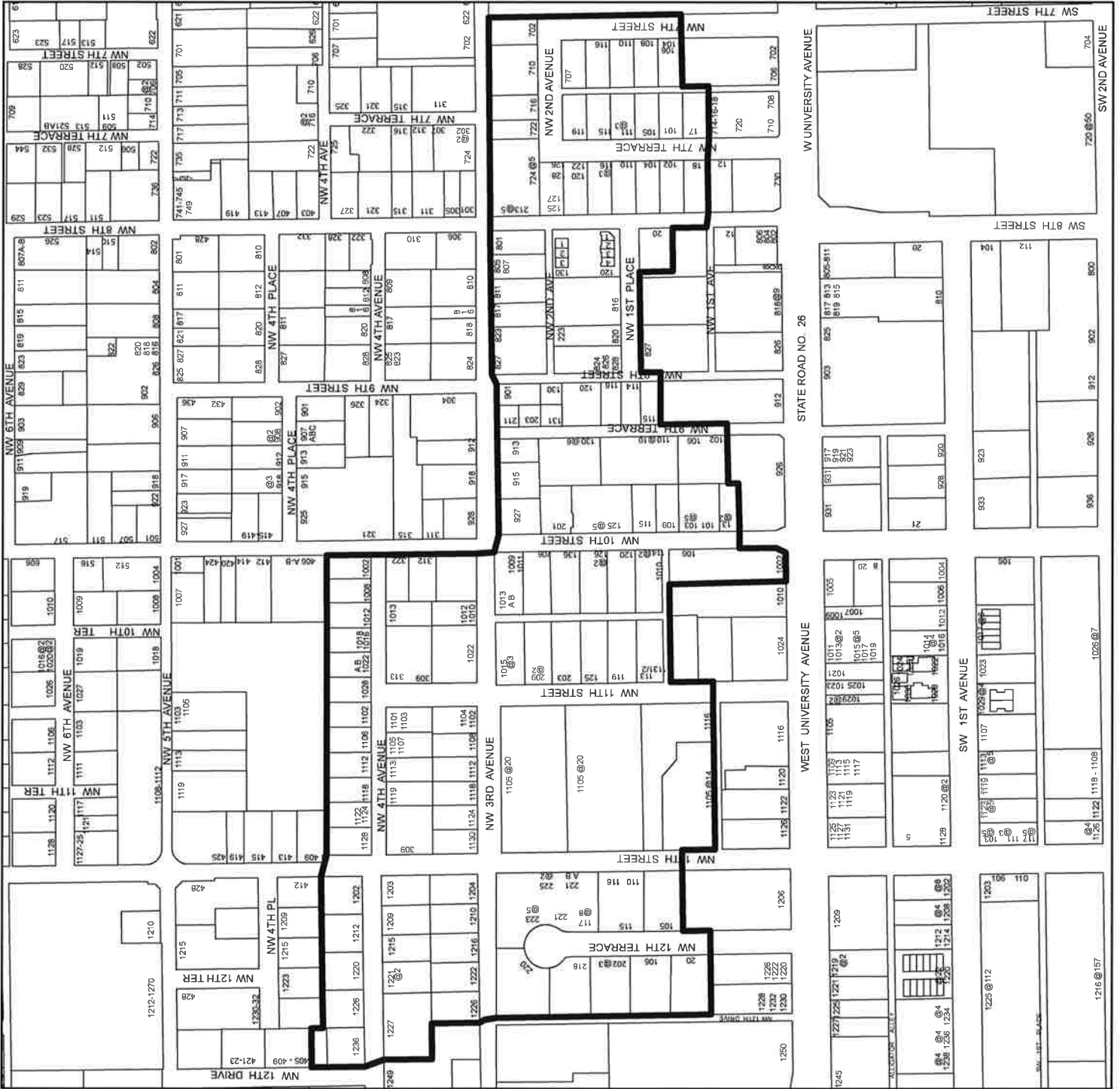
140693C

City of Gainesville, Florida

Prepared by the Planning and  
Development Services Department  
January 2015



0 95 190 380 Feet



# FUTURE LAND USE ELEMENT

Historic Preservation Map Series:  
University Heights Historic  
District - South

Historic District Boundary

EXHIBIT  
A-5

140693C

City of Gainesville, Florida

Prepared by the Planning and  
Development Services Department  
January 2015

