

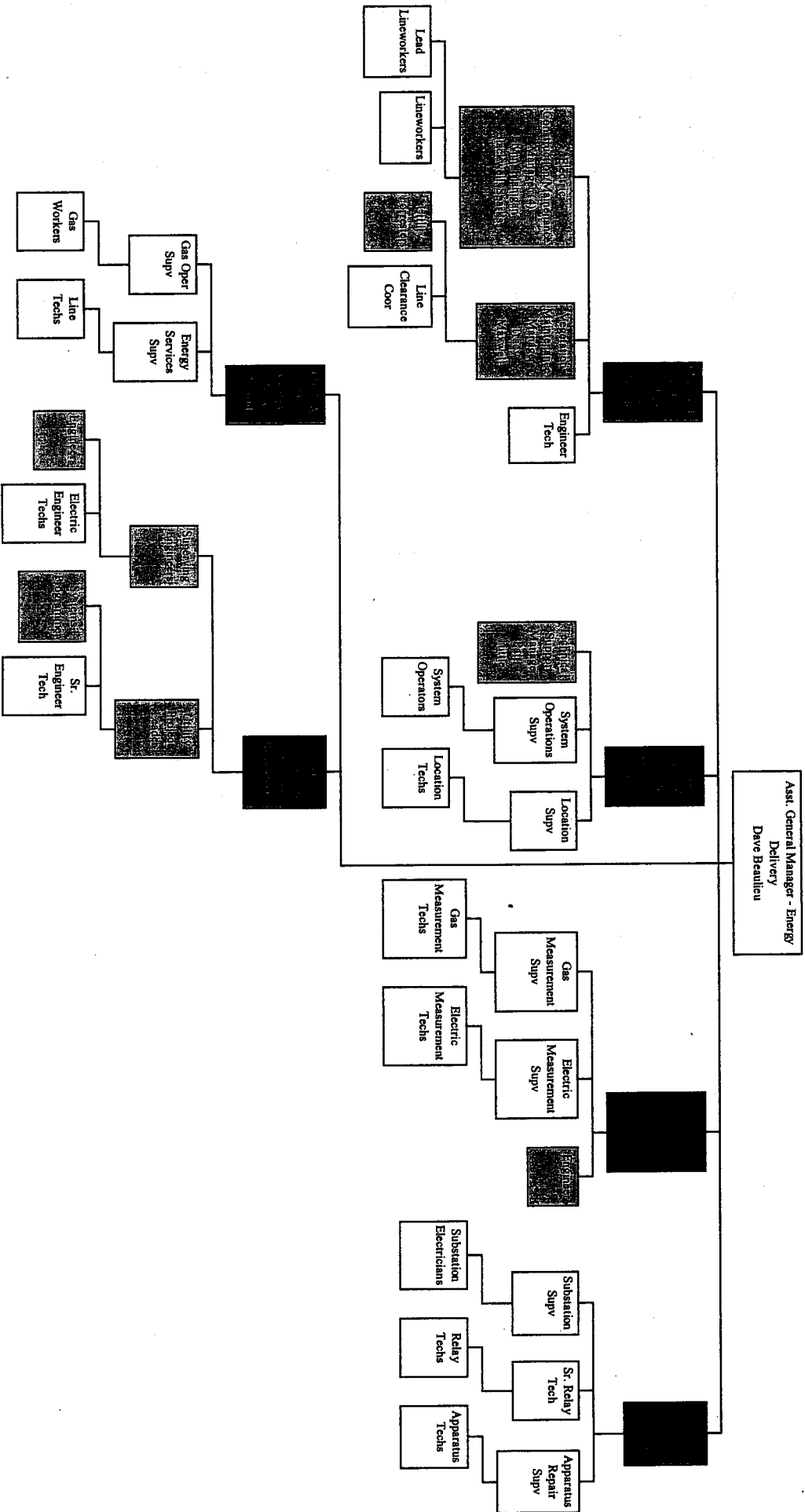
**Total Costs for Exempt Employees - General Government/GRU for Hurricanes Frances
and Jeanne (including Fringe Benefits)**

	Payroll Cost	Social Security @ 6.25%	Medicare @ 1.4%	Disability Pension Contribution @ .69%	Total Fringe Benefits	Total Costs
GRU Costs	\$96,909.27	\$6,056.83	\$1,356.73	\$668.67	\$8,082.23	\$104,991.50
GG Costs	\$26,480.00	\$1,655.00	\$370.72	\$182.71	<u>\$2,208.43</u>	<u>\$28,688.43</u>
					\$10,290.67	\$133,679.94

GRU Em. / Delivery

Not eligible for additional pay

Paid at 1.5x hourly rate and eligible for 2.0x hour rate



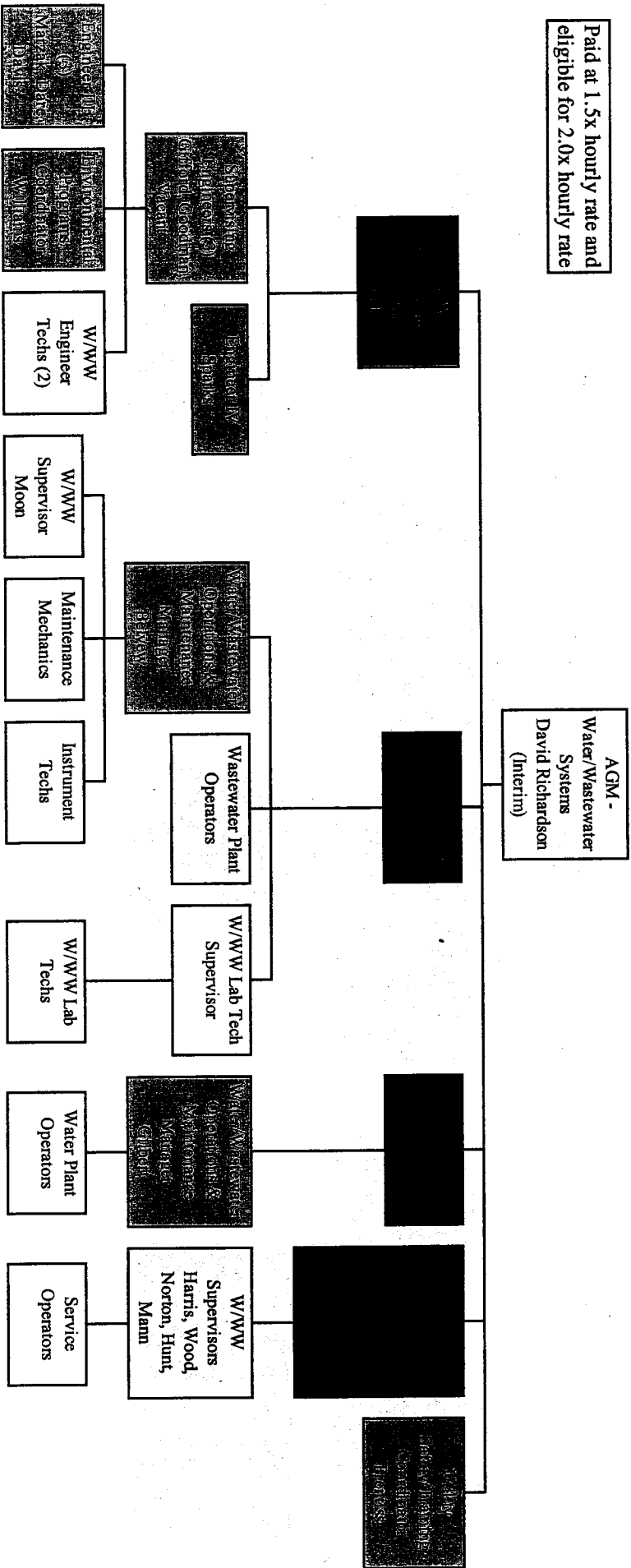
Water/Wastewater

Not eligible for additional pay

[Redacted]

Paid at 1.5x hourly rate

Paid at 1.5x hourly rate and eligible for 2.0x hourly rate



Customer & Administrative Services

