



**Alachua County Supervisor of
Elections**

Building Expansion

City Commission

June 17, 2010

(City Legistar No. 091014)

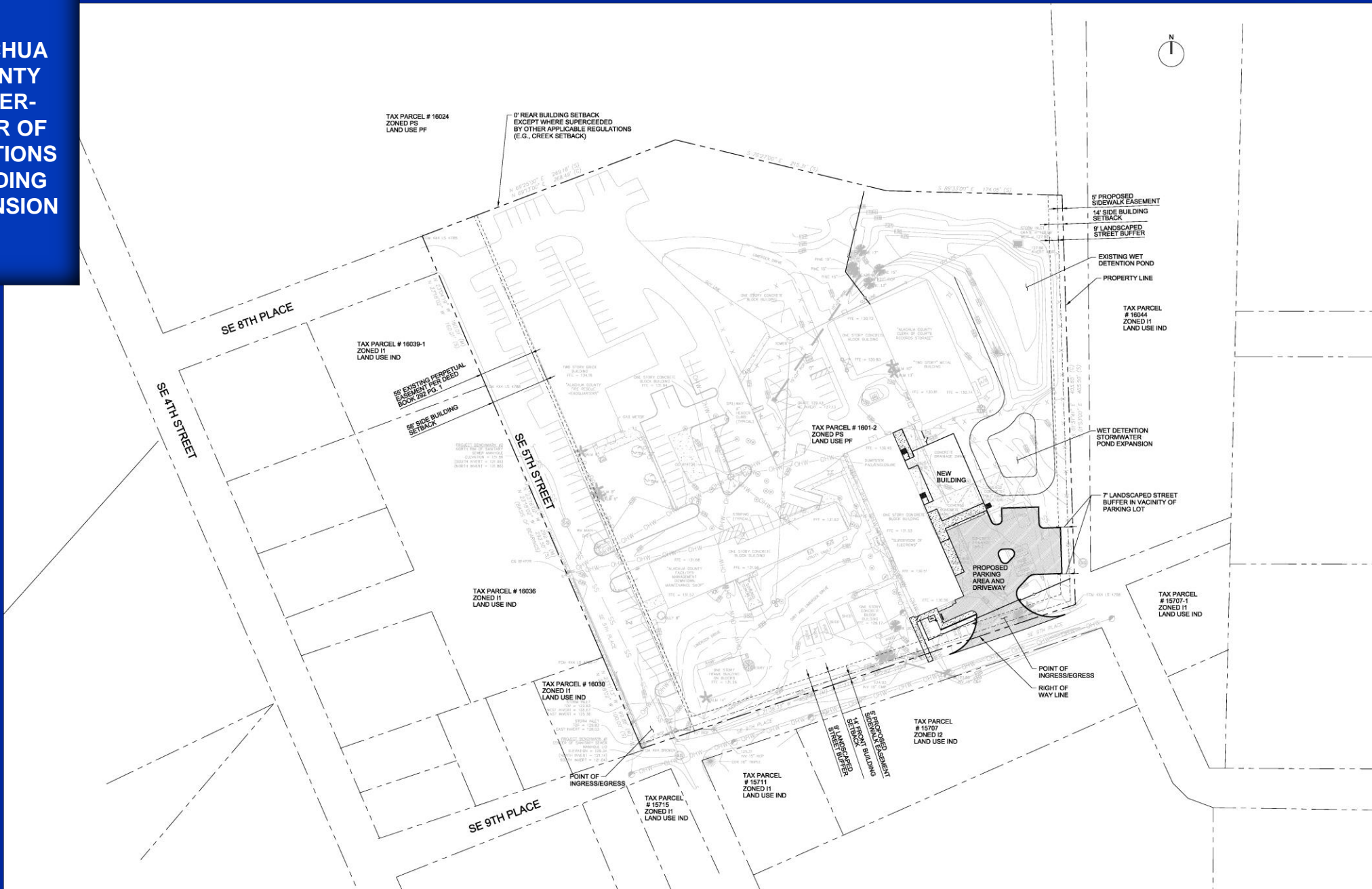
Overview

- **Due to Federal Mandate the Supervisor of Elections needs a new facility for ADA (Americans Disability Act) polling machines**
- **Addition of approximately 4,000 SF building located at 602 SE 9th Place, Gainesville, Florida**
- **Anticipated construction to begin Summer 2010**
- **Modifications include:**
 - Building expansion with loading dock
 - Parking area & driveway
 - Stormwater pond expansion

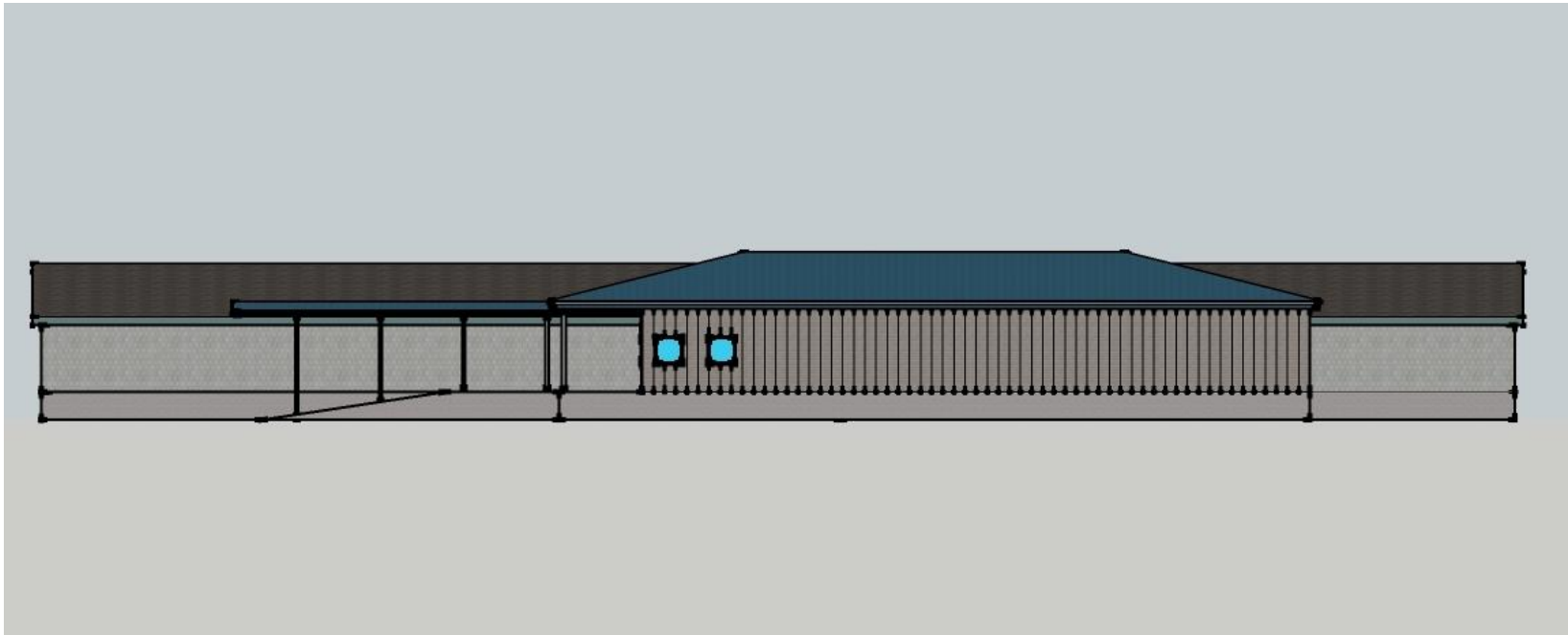
ALACHUA COUNTY
SUPERVISOR OF
ELECTIONS
BUILDING
EXPANSION



ALACHUA COUNTY SUPERVISOR OF ELECTIONS BUILDING EXPANSION



East Elevation (From East)



South Elevation (from SE 9th Pl.)



Loading Dock



Thank you!

Questions?