

SW 5TH AVE. TRIANGLE SITE IMPROVEMENT PLAN

GAINESVILLE, FLORIDA

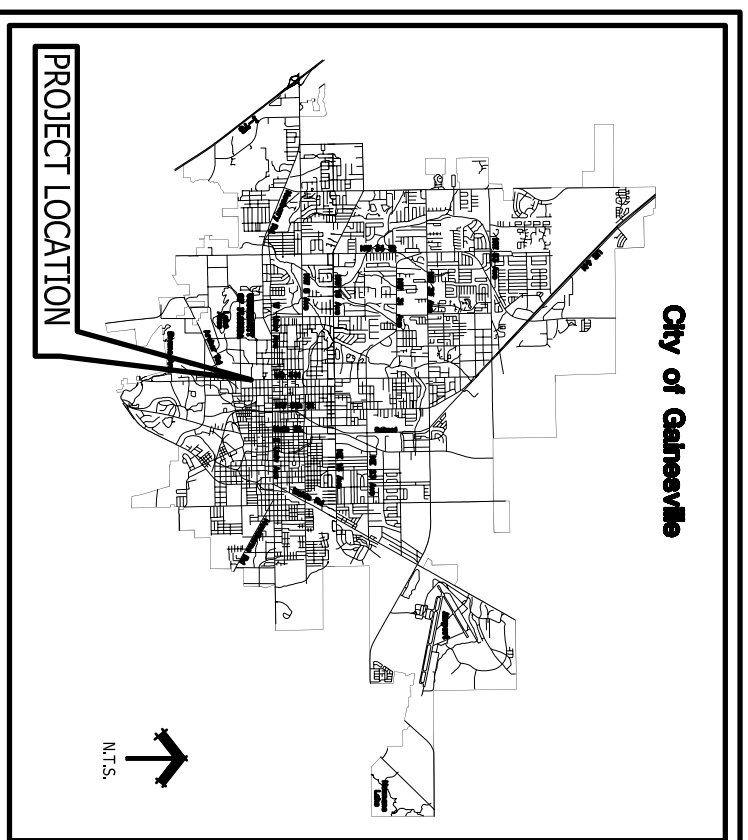
for the

COMMUNITY REDEVELOPMENT AGENCY

COLLEGE PARK / UNIVERSITY HEIGHTS REDEVELOPMENT AREA

GAINESVILLE, FLORIDA

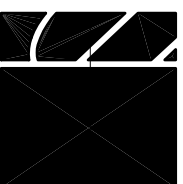
Location Map



BID DOCUMENTS

May 03, 2006

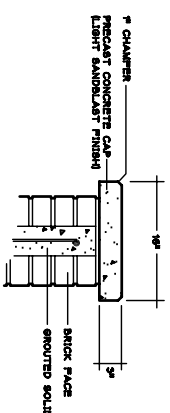
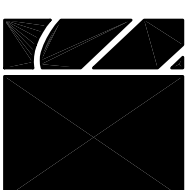
Prepared by:



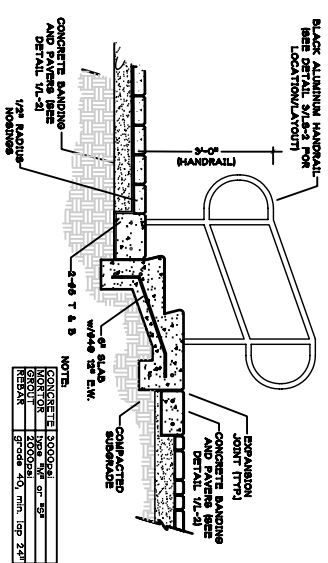
Buford Davis + Associates
Landscape Architects Site Planners
2406 NW 43rd Street
Gainesville, Florida 32606
352.335.1895 Tel
352.379.4807 Fax

Table of Contents

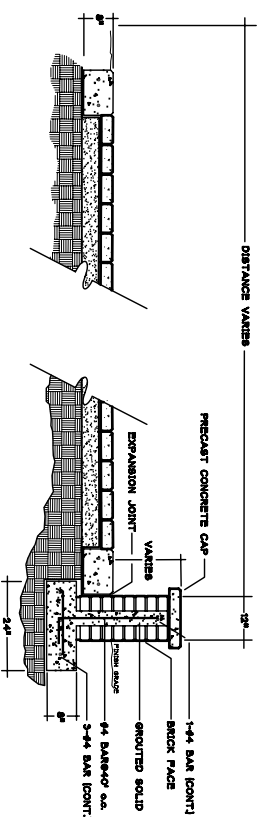
S-1	EXISTING SITE SURVEY
S-2	SITE PLAN / DETAIL REFERENCE AND DEMOLITION PLAN
S-3	DIMENSION PLAN AND GRADING PLAN
S-4	DETAIL SHEET
L-1	LANDSCAPE PLAN
L-2	IRRIGATION PLAN
E-1	SITE ELECTRICAL



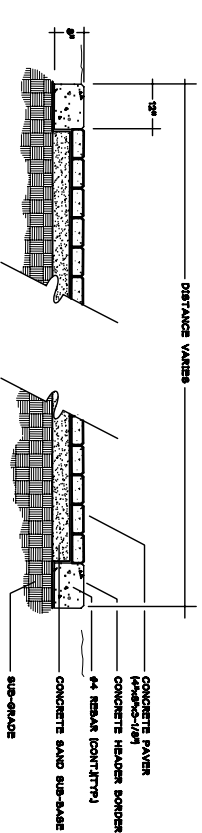
1 PRECAST CAP DETAIL
 S-4 SCALE: 1/4"=1'-0"



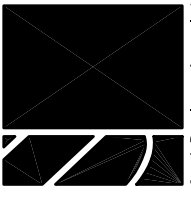
2 STEP/HANDRAIL DETAIL
 S-4 SCALE: 1/2"=1'-0"



3 PLANTER WALL DETAIL
 S-4 SCALE: 1/2"=1'-0"



4 CONCRETE PAYER DETAIL
 S-4 SCALE: 1/2"=1'-0"



Buford Davis + Associates
landscape architects site planners
2400 NW 43rd Street
Gainesville, FL 32609
352-335-1896 Tel
352-373-6407 Fax

SW 5th AVE TRIANGLE

GAINESVILLE, FLORIDA

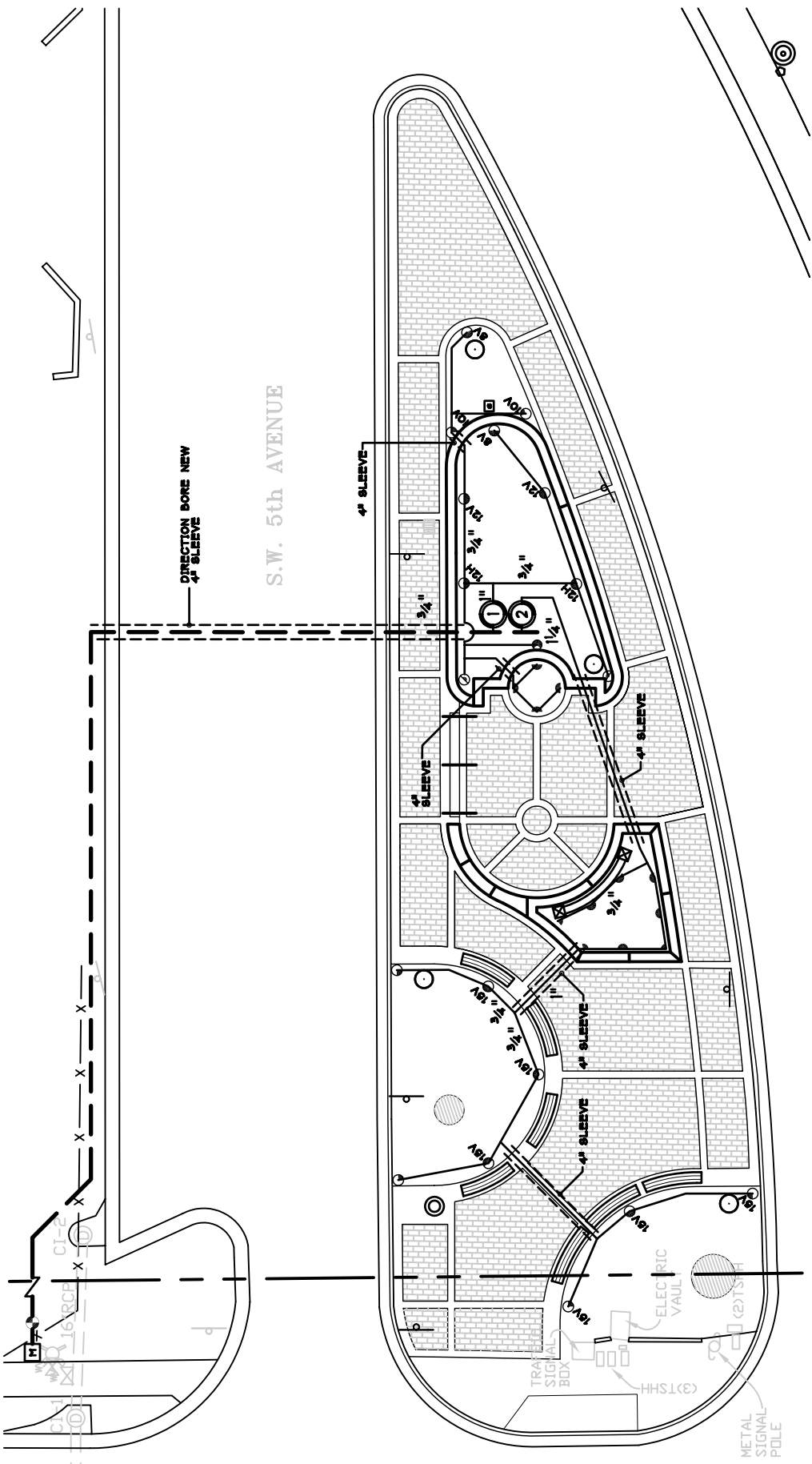
PROJECT TITLE & LOCATION:

IRRIGATION PLAN

SHEET TITLE:

SEAL:

DRAWN BY:	DRR/EH/DS
CHECKED BY:	BOB
DATE:	07-06-05
REVISIONS:	02-28-06
	04-03-06
DRAWING SCALE:	1"=10'
PROJECT NUMBER:	05-029
SHEET:	L-2



S.W. 13th STREET
U.S. HIGHWAY No. 441

IRRIGATION PLAN
SCALE: 1/4"=10'-0"

IRRIGATION LEGEND

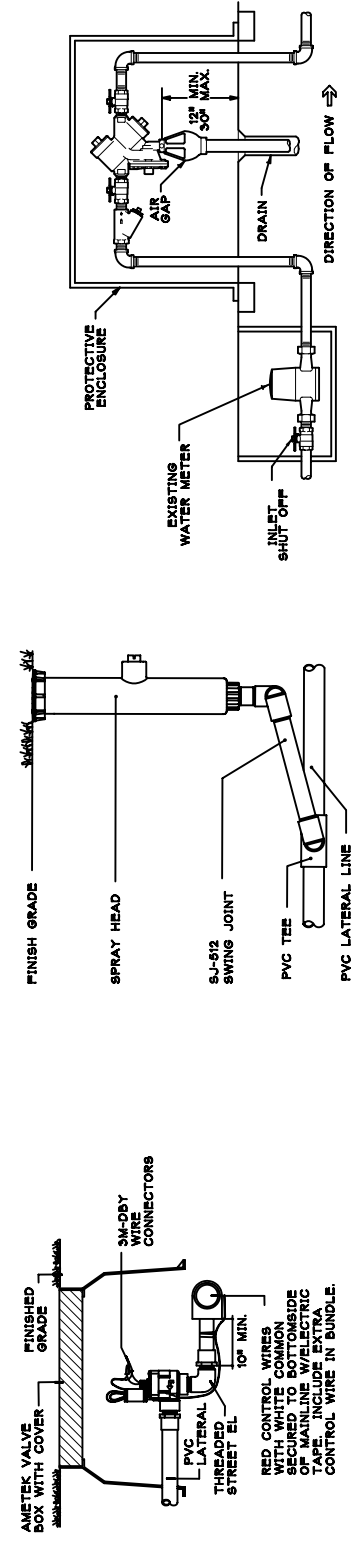
RAINFIRD 1812-PR8-16 SERIES MPR SPRAY HEAD		
HEAD SIZE	NOZZLE	SPIN PSI
6"	16TQ	2.78 30
6"	16H	1.86 30
6"	16Q	.92 30
6"	16ST	.61 30

RAINFIRD 1812-PR8-8-B BUBBLER NOZZLE		
HEAD SIZE	NOZZLE	SPIN PSI
7"	8Q-B	.60 30
7"	8H-B	1.00 30

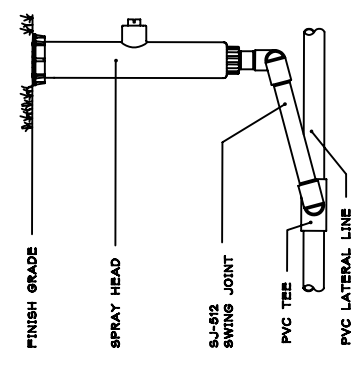
- ① 2" BRASS BALL VALVE
- ⊖ ELECTRIC VALVE
- 1-1/2" SCHEDULE 40 MAINLINE
- ==== SCHEDULE 40 PVC SLEEVE
- ☐ CONTROLLER RAINBIRD ESP-SMC-PED-DD16
- ∇ BACKFLOW PREVENTOR WILKINS 878-1 INSTA IN HOT BOX LES

NOTES
IRRIGATION PIPING AND FIXTURES TO BE SCHEDULE 40 PVC.

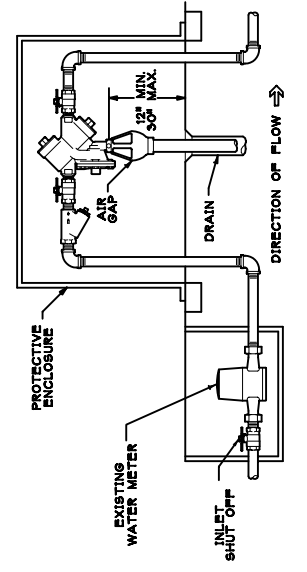
ZONE SCHEDULE	
1	15.65
2	17.88



1. VALVE BOX WITH VALVE DETAIL
SCALE: NOT TO SCALE

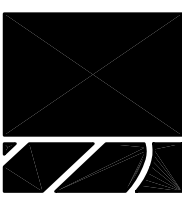


2. 1800 SPRAY HEAD
SCALE: NOT TO SCALE



3. WILKINS MODEL 975XL
REDUCED PRESSURE PRINCIPLE ASSEMBLY
OUTDOOR HORIZONTAL INSTALLATION
SCALE: NOT TO SCALE





Buford Davis + Associates
landscape architects site planners
2406 NW 43rd Street
Gainesville, Florida 32606
352.373.6407 FAX

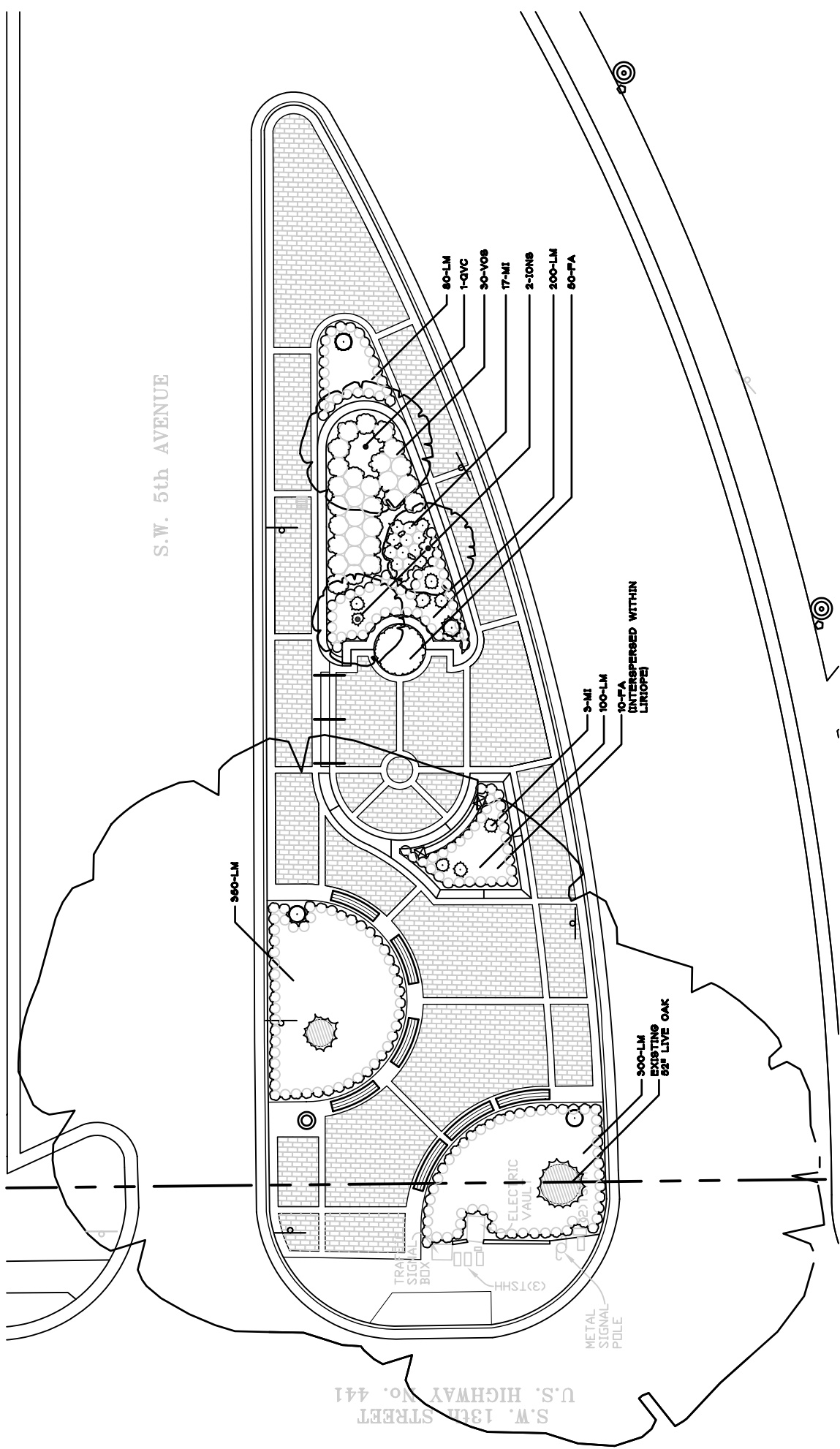
SW 5th AVE TRIANGLE
LANDSCAPE PLAN

PROJECT TITLE & LOCATION:

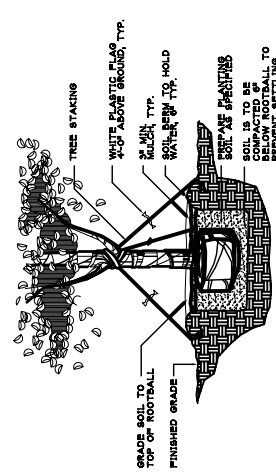
SHEET TITLE:

SEAL:

DRAWN BY: DRR/EH/MS
CHECKED BY: BOD
DATE: 07-06-05
REVISIONS:
02-28-06
04-03-06
DRAWING SCALE: 1"=10'
PROJECT NUMBER: 05-029
SHEET: L-1

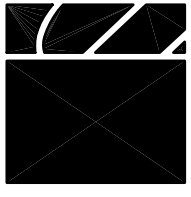


LANDSCAPE PLAN
SCALE: 1"=10'-0"



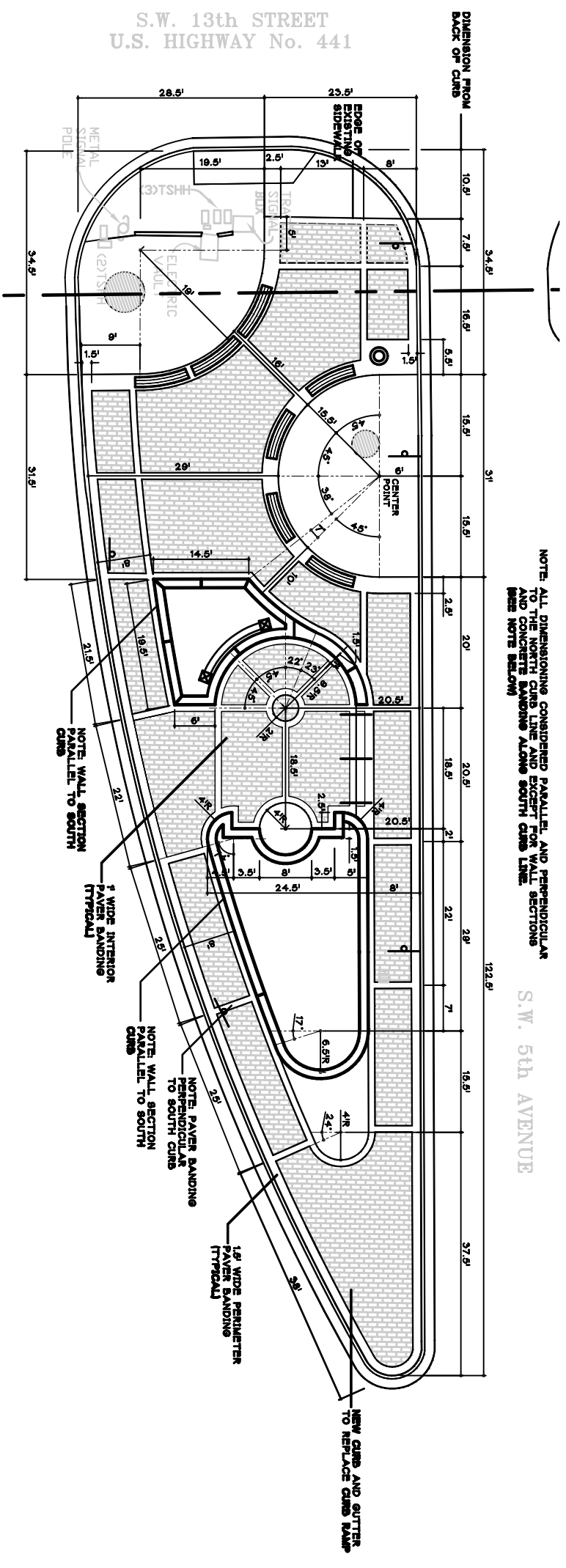
1. TREE PLANTING DETAIL
NOTES

SYMBOL	SCIENTIFIC NAME	COMMON NAME	SPECIFICATIONS
TREES			
IONS	ILEX OPACA	NELLIE STEVEN HOLLY	65 gal, 8' h, 4' spr., 2-1/2" cal.
QVC	QUERCUS VIRGINIANA	'CATHEDRAL' LIVE OAK	100 gal, 14' h, 4' spr., 4" cal.
SHRUBS & GROUNDCOVER			
LM	LIRIOPE MUSCARI	LIRIOPE 'BIG BLUE'	1 gal, FULL POT
MI	MORAEA IRIDIODES	WHITE AFRICAN IRIS	1 gal, FULL POT
VOS	VIBURNUM OBOVATUM	MRS. SHILLERS DELIGHT	3 gal, 19" ht. x 19" spr.
FA	FLOWERING ANNUALS	MRS. SHILLERS DELIGHT TO BE DETERMINED	4" POTS



Buford Davis + Associates
 landscape architects site planners
 2406 NW 43rd Street
 Gainesville, Florida 32606
 352.373.6807 fax

S.W. 13th STREET
 U.S. HIGHWAY No. 441

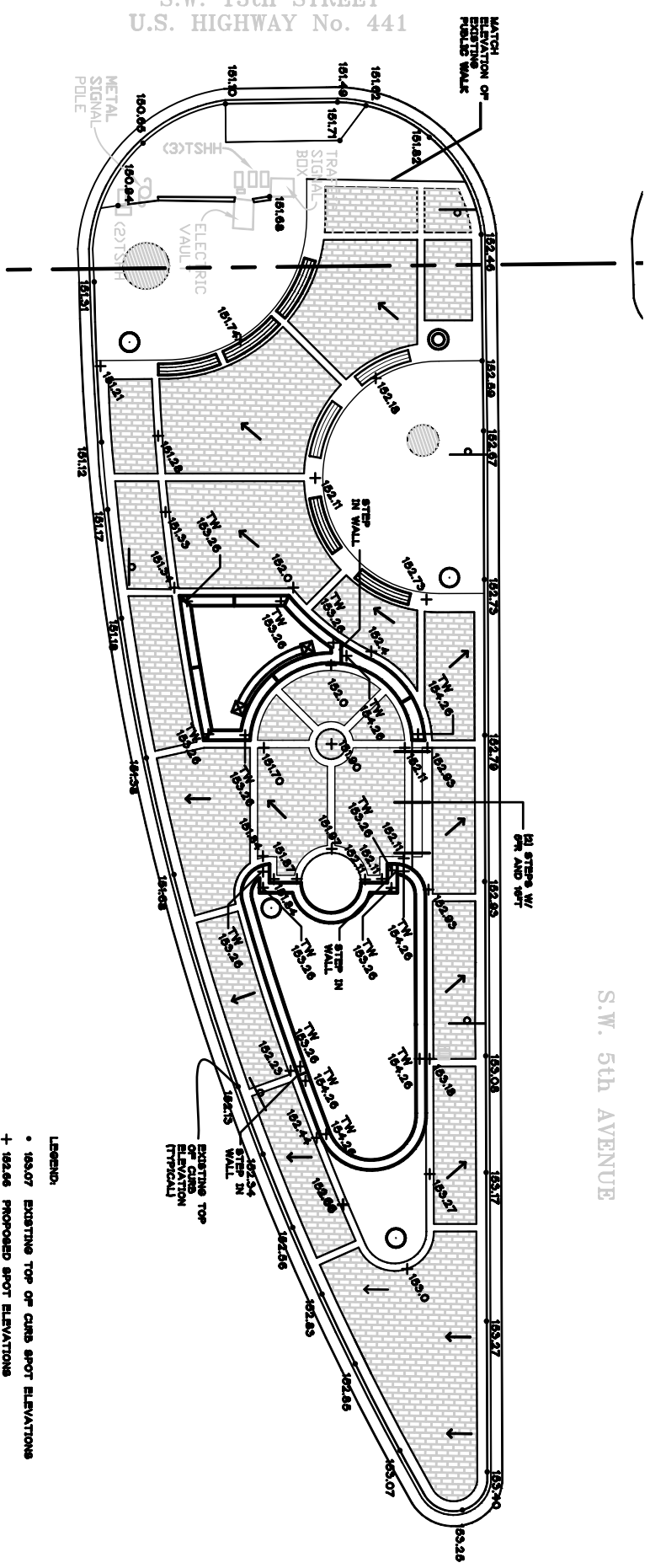


NOTE: ALL DIMENSIONING CONSIDERED PARALLEL AND PERPENDICULAR TO THE NORTH CURB LINE AND EXCEPT FOR WALL SECTIONS (SEE NOTE BELOW)

S.W. 5th AVENUE

DIMENSION PLAN
 SCALE: 1/4"=10'-0"

S.W. 13th STREET
 U.S. HIGHWAY No. 441



S.W. 5th AVENUE

LEGEND:
 • 163.07 EXISTING TOP OF CURB SPOT ELEVATIONS
 + 162.66 PROPOSED SPOT ELEVATIONS
 T.W. TOP OF WALL

SITE GRADING PLAN
 SCALE: 1/4"=10'-0"

PROJECT TITLE & LOCATION:

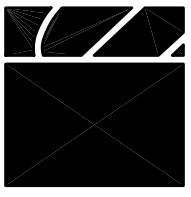
SW 5th AVE TRIANGLE
 GAINESVILLE, FLORIDA

SHEET TITLE:

DIMENSION PLAN AND
 GRADING PLAN

SEAL:

DRAWN BY: DRR/EMWDS
CHECKED BY: BOD
DATE: 07-06-05
REVISIONS:
02-28-06
04-03-06
DRAWING SCALE: 1/4"=10'
PROJECT NUMBER: 05-029
SHEET: S-3



Buford Davis + Associates
 landscape architects site planners

 2406 NW 43rd Street
 Gainesville, Florida 32606
 352.373.6407 fax

PROJECT TITLE & LOCATION:

SW 5th AVE TRIANGLE
 GAINESVILLE, FLORIDA

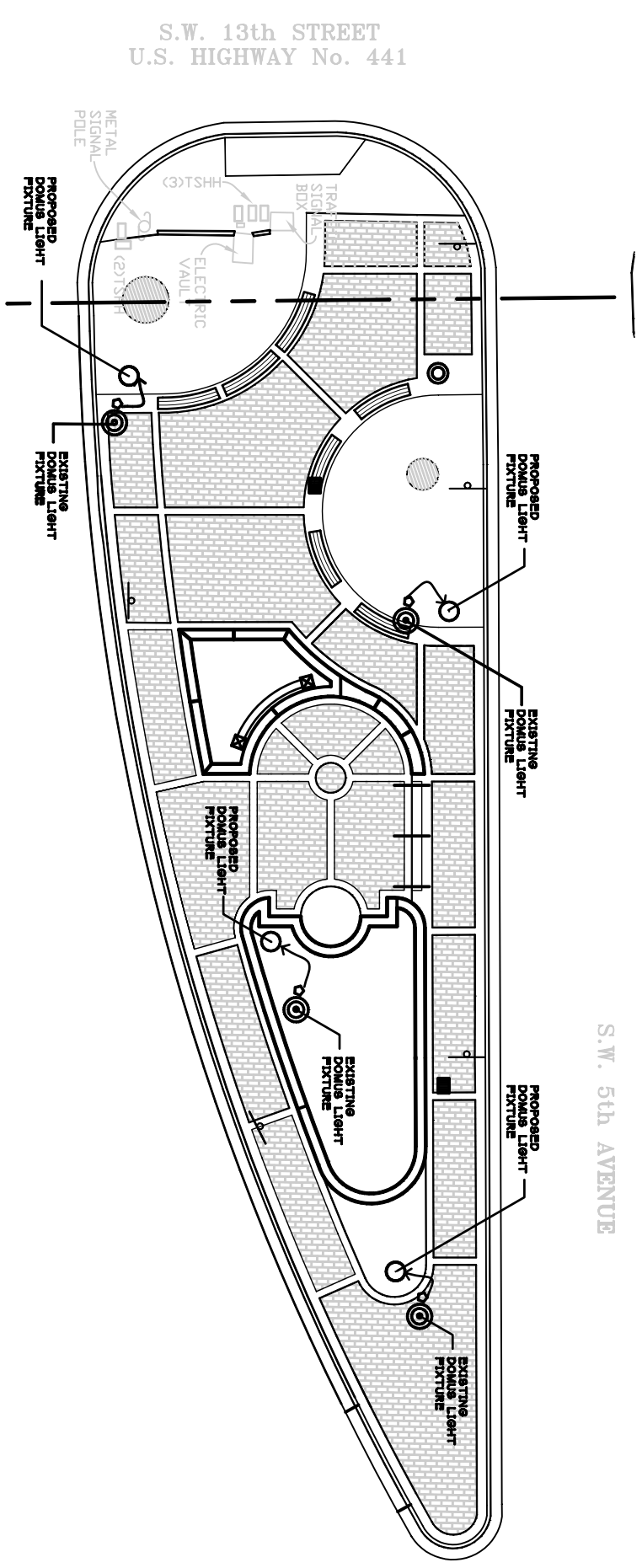
SHEET TITLE:

SITE ELECTRICAL

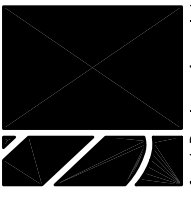
SEAL:

DRAWN BY: DRR/HH/DS
 CHECKED BY: BOD
 DATE: 07-06-05
 REVISIONS:
 02-28-06
 04-03-06

DRAWING SCALE: 1"=10'
 PROJECT NUMBER: 05-029
 SHEET: E-1



SITE ELECTRICAL PLAN
 SCALE: 1"=10'-0"



Buford Davis + Associates
landscape architects site planners
2406 NW 43rd Street
Gainesville, FL 32606
352.335.1896 Tel
352.373.6407 Fax

SW 5th AVE TRIANGLE

GAINESVILLE, FLORIDA

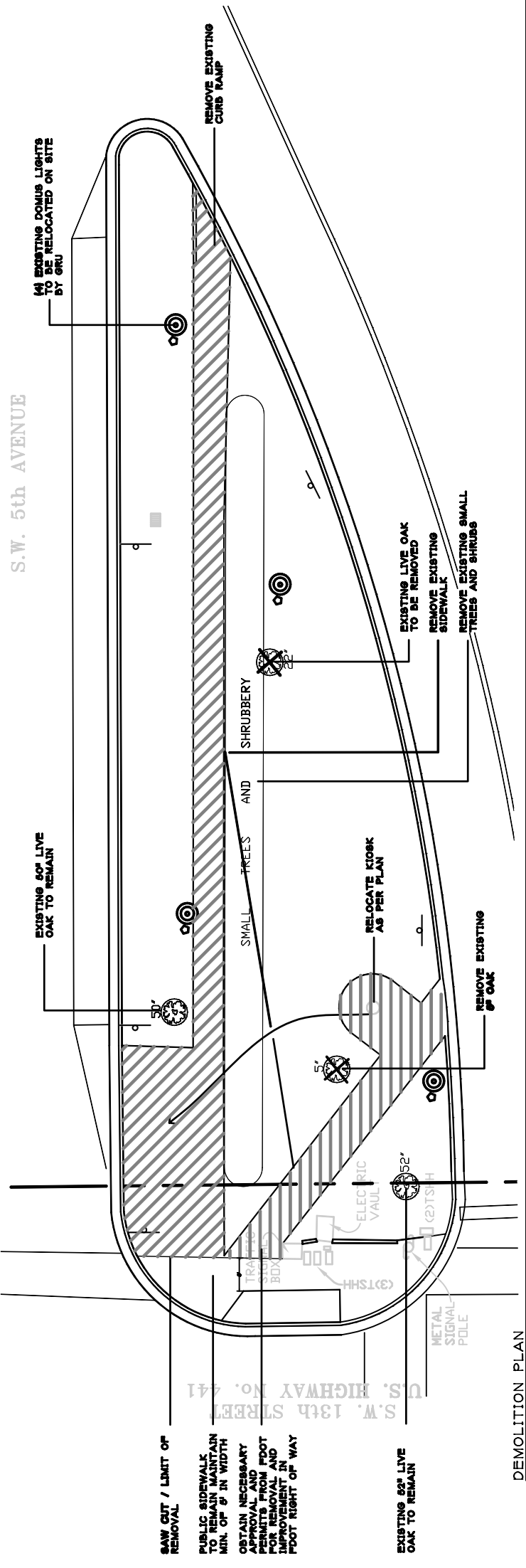
PROJECT TITLE & LOCATION:

DEMOLITION PLAN AND SITE PLAN / DETAIL REFERENCE

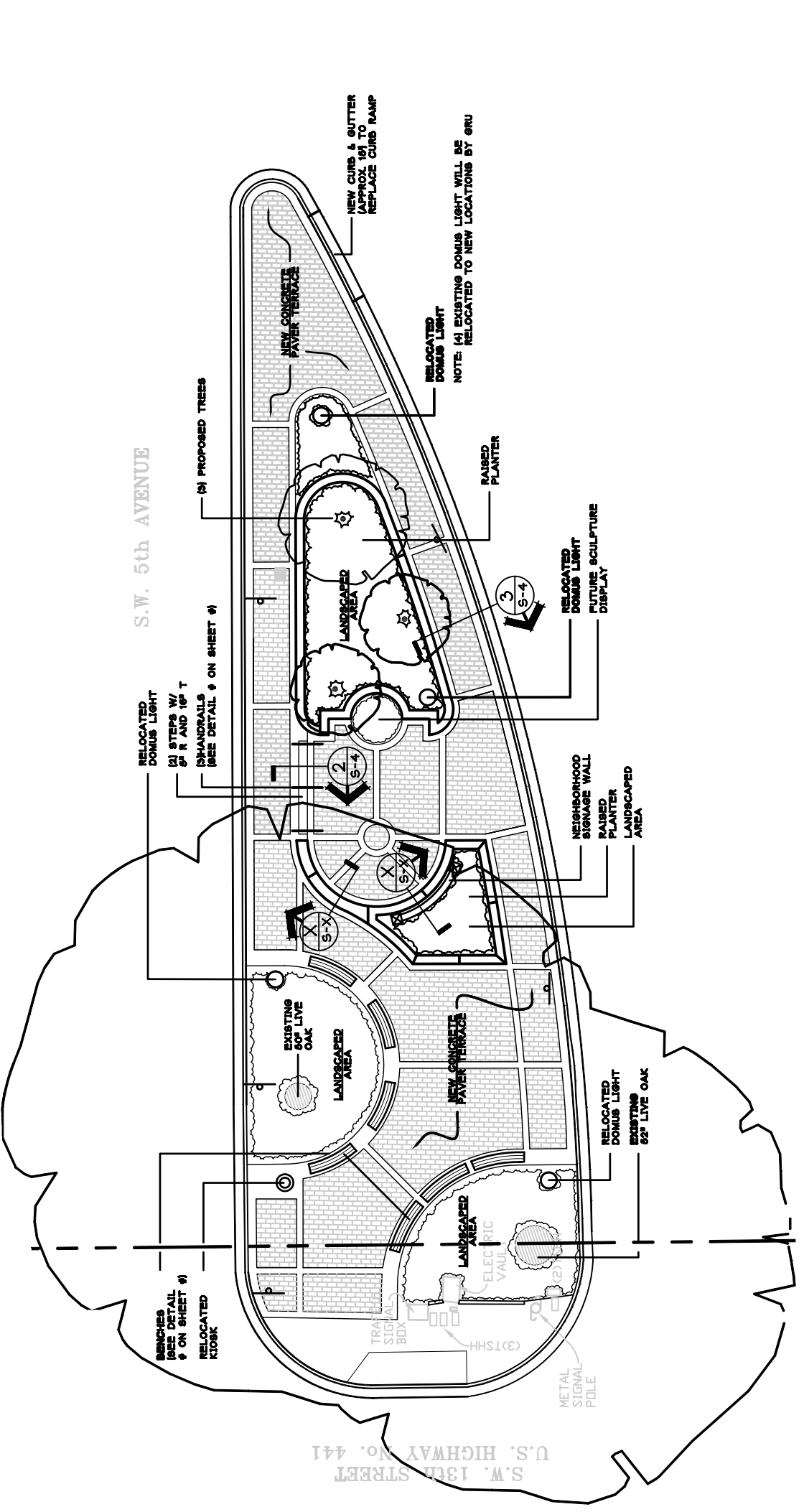
SHEET TITLE:

SEAL:

DRAWN BY: DR/ERH/DS
CHECKED BY: BOD
DATE: 07-06-05
REVISIONS:
02-28-06
04-03-06
DRAWING SCALE: 1"=10'
PROJECT NUMBER: 05-029
SHEET: S-2

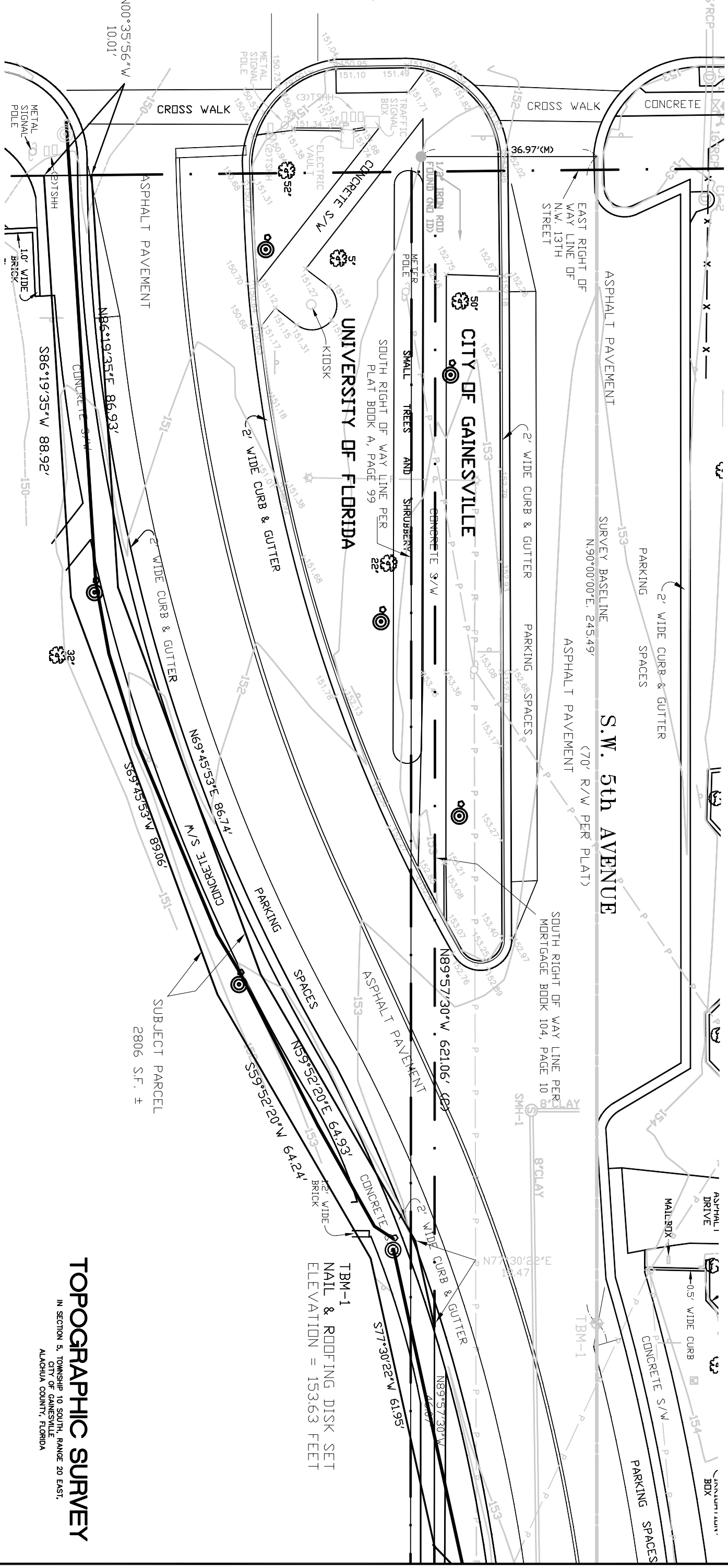


DEMOLITION PLAN
SCALE: 1"=10'-0"



SITE PLAN AND DETAIL REFERENCE
SCALE: 1"=10'-0"

S.W. 13th STREET / U.S. HIGHWAY No. 441



SURVEYOR'S NOTES

1. The bearings hereon are based on an assumed bearing of N.90°00'00"E. along the survey baseline as depicted.
2. Underground utilities, structures and/or foundations, if any, were not located and are not shown.
3. Recorded easements and/or adjacent deeds not furnished to the surveyor are not shown.
4. Jurisdictional wetlands, if any, were not located and are not shown.
5. Elevations shown hereon are based on United States Coast & Geodetic Survey Benchmark "ST", with a published elevation of 174.006 feet (National Geodetic Vertical Datum 1929).
6. The apparent right of way lines as shown hereon are based on found monumentation that has not been verified as being on the true right of way lines.

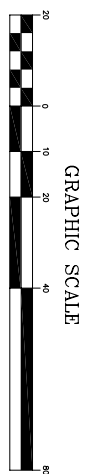
THIS IS NOT A BOUNDARY SURVEY

FLOOD NOTE

Community Panel No. 125107 0008 B of the Flood Insurance Rate Maps for the City of Gainesville, Florida, dated January 19, 1983, depicts the area within which the subject property is wholly situated as lying within Zone "C".

LEGEND OF SYMBOLS & ABBREVIATIONS

- Indicates from pipe found, size as noted (no ID) (unless noted otherwise)
- Indicates nail & disk found
- Indicates fence line
- Indicates overhead power line
- Indicates wood power pole
- Indicates guy anchor
- Indicates wood light pole
- Indicates metal light post
- ★ Indicates fire hydrant
- ★ Indicates water valve
- ★ Indicates water meter
- ★ Indicates drainage manhole
- CI Indicates curb inlet
- DMH Indicates drainage manhole
- ⊙ Indicates drainage manhole
- ⊙ Indicates sanitary sewer manhole
- ⊙ Indicates sanitary seamer manhole
- ⊙ Indicates reinforced concrete pipe
- PVC Indicates polyvinyl chloride pipe
- TSHH Indicates traffic signal hand hole
- S/W Indicates sidewalk
- C/S Indicates concrete slab
- Indicates sign
- Indicates oak tree
- Indicates palm tree
- Indicates crape myrtle tree
- Indicates sugartree tree
- Indicates magnolia tree
- Indicates cherry tree
- (M) Indicates measured data
- (R) Indicates record data
- R/W Indicates right of way
- O, R Indicates Official Records Book
- ID Indicates Identification
- TBM Indicates Temporary Benchmark
- ↕ Indicates Temporary Benchmark location (nail & roofing disk set on survey baseline)
- ELEV Indicates elevation



TOPOGRAPHIC SURVEY

IN SECTION 5, TOWNSHIP 10 SOUTH, RANGE 20 EAST, ALACHUA COUNTY, FLORIDA

SURVEYOR'S CERTIFICATION
 I hereby certify to City of Gainesville, Community Redevelopment Agency that the sketch hereon is an accurate representation of the lands described hereon, is in compliance with the Minimum Technical Standards in Chapter 61G17-6 of the Florida Administrative Code as set forth by the Florida Board of Professional Surveyors and Mappers pursuant to Section 472.027 Florida Statutes, as surveyed under my direct supervision and is true and correct to the best of my knowledge and belief.
George F. Young, Inc.
 CERTIFICATE OF AUTHORIZATION # LB021

Michael L. Herbert
 Professional Surveyor and Mapper
 Certificate of Registration No. 4995

Date of signature _____
 Date field survey complete—8/01/2005
 REVISED 3/28/2006 Addition spot elevations on island (SHEET ONE ONLY)

NOT VALID WITHOUT THE SIGNATURE AND THE ORIGINAL RAISED SEAL OF A FLORIDA LICENSED SURVEYOR AND MAPPER.

George F. Young, Inc.
 1805 South Main Street
 Gainesville, Florida 32601
 PHONE (352) 575-1443 FAX (352) 575-4092

DATE	BY	SCALE	FILE #
2005	MHC	1" = 20'	
2005	MHC	1" = 20'	
2005	MHC	1" = 20'	

S.W. 5th Avenue IMPROVEMENTS