



American Rescue
Plan Act of 2021

Kami Klejcz, Program Coordinator

Joe Dixon, *Fire Chief*

210760

1/13/22



- What is the spending plan for the requested ARP funds for the CRP?





MISSION:

To connect underutilized resources to underserved populations

RESOURCES:

Personnel, tools, facilities, funding

CAPACITY:

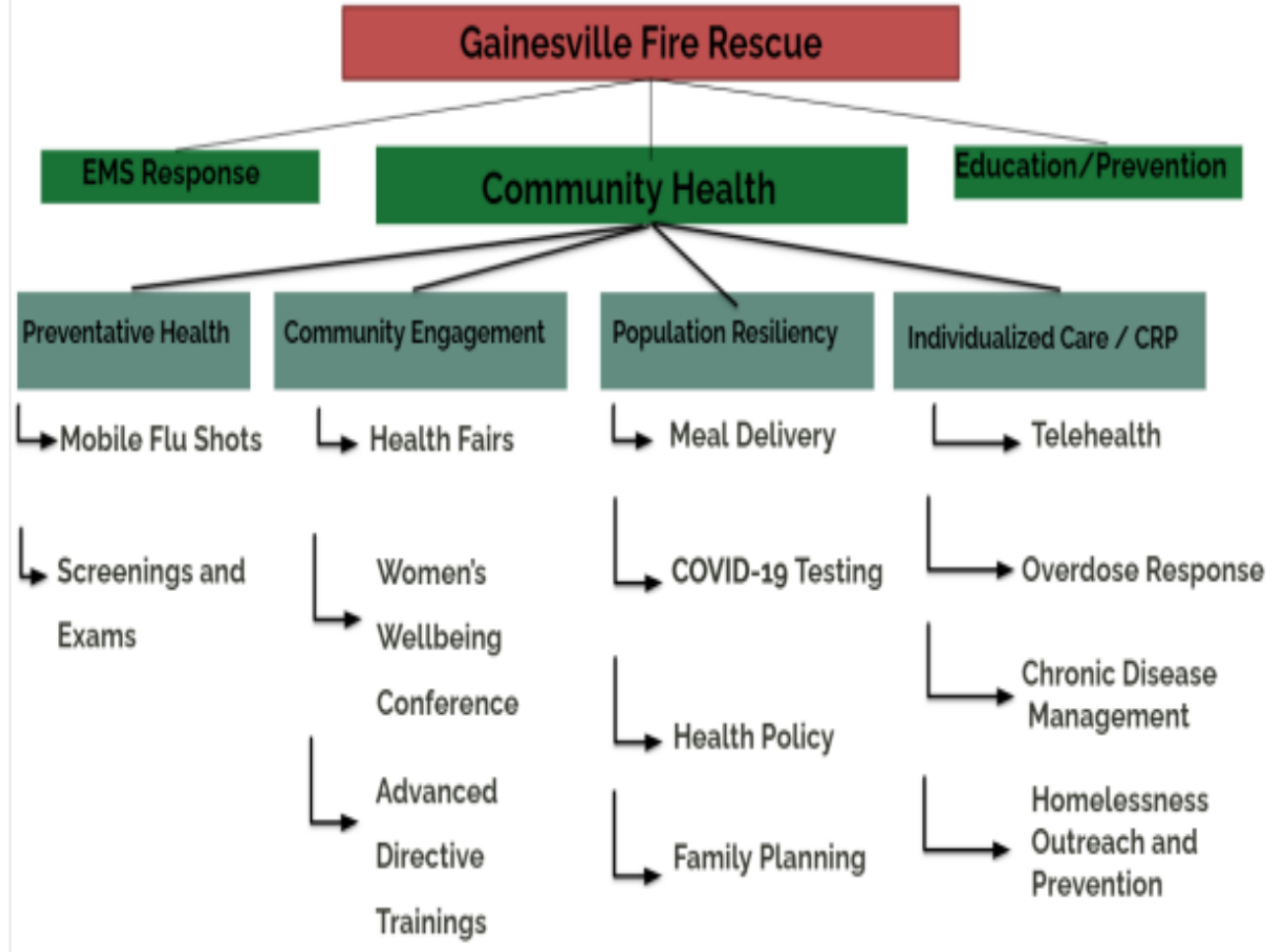
Allocated resources relate proportionately to impact

IMPACT:

Graduates, reduction of super users, QOL, etc.

MISSION:

To connect underutilized resources
to underserved populations.




DIFFERENCE
makers

RESOURCES:

- Personnel
- Equipment
- Facilities
- Investment - funding

Personnel:

Individualized Care Capacity

 300

Community Health Impact (Health Fairs, diagnostic screening, vaccinations...)
 8000

This graphic is in accordance with Commission direction to move forward with phase 2 and City Manager direction to provide three (3) options. To achieve increased capacity and meet demand, staffing must increase. Fire Department staff recommend growth of the program in the following steps that allows growth in functional units defined as: (0.5) Program Coordinator, (1) Resource Technician, (1) EMS Responder, and (.5) Specialist.
 Specialist include but are not limited to Nurse Practitioners, Addiction Specialists, and Pharmacists

Remaining Phase II Total
 2.1 + 2.2 + 2.3
 Recurring Staff Cost
 \$616,030.00



225 7000

Proposed FY23 Staffing
 Recurring Staff Cost
 \$437,195.10



150 6000

Budgeted FY22 Staffing
 \$258,360.20

2.2 Additions:
 (0.5) Program Coordinator
 (2) EMS Responders
 (1) Resource Technician

2.3 Additions:
 (0.5) Program Coordinator
 (2) EMS Responders
 (1) Resource Technician



50 2500 FY21 Staffing \$170,288.00

(1) Program Coordinator
 (3) Resource Techs

(1) Community Health Director
 (1) EMS Responder
 (1) Resource Technician
 (0.5) Program Specialist

Total: \$178,834.90

Total: \$178,834.90

RESOURCES:

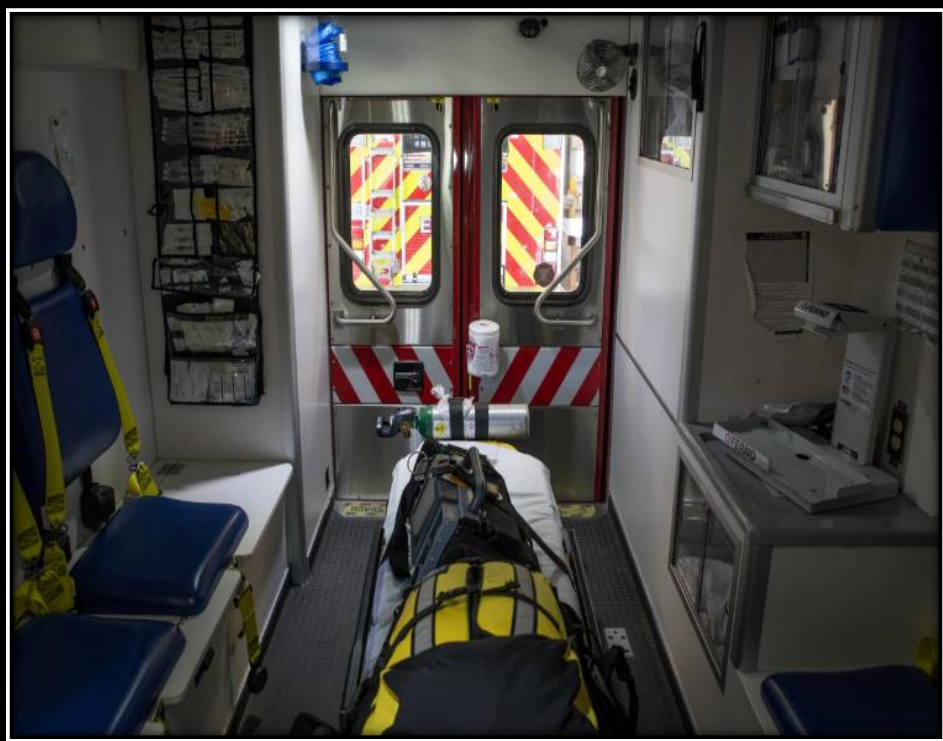
- Personnel
- **Equipment**
- Facilities
- Investment - funding

Tools:

ARP Requests

- * Remote Patient Monitoring equipment
- ** electronic patient care

\$1,000,000.00 for FY22/23




	FY22	FY23
Ambulance (2)	\$350,000.00	
Zoll monitor (2)	\$100,000.00	
ALS bags & drugs (2)	\$4,000.00	\$4000.00
Radios (8)	\$24,000.00	\$24,000.00
CF33 Computer (2)	\$16,000.00	
EPC** and 1 st Due software	\$20,000.00	\$38,000.00
COVID RT Lamp Mini Lab (4)	\$20,000.00	\$20,000.00
I-stat machine (2)	\$30,000.00	30,000.00
Power stretcher (2)	\$25,000.00	\$25,000.00
Power Loader (2)	\$50,000.00	
Office equipment (8)	\$10,000.00	\$10,000.00
Cell Phones (2)	\$2,000.00	
Reoccurring Overhead	\$99,000.00	\$99,000.00
Total:	\$750,000.00	\$250,000.00

CAPACITY:

Allocated resources are directly related to the degree of impact.

Personnel:


Individualized Care Capacity

 300

Community Health Impact
 (Health Fairs, diagnostic screening, vaccinations..)
 8000


This graphic is in accordance with Commission direction to move forward with phase 2 and City Manager direction to provide three (3) options. To achieve increased capacity and meet demand, staffing must increase. Fire Department staff recommend growth of the program in the following steps that allows growth in functional units defined as: (0.5) Program Coordinator, (1) Resource Technician, (1) EMS Responder, and (.5) Specialist.

Specialist include but are not limited to Nurse Practitioners, Addiction Specialists, and Pharmacists

Remaining Phase II Total
 2.1 + 2.2 + 2.3
 Recurring Staff Cost
 \$616,030.00


 225 7000


Proposed FY23 Staffing
 Recurring Staff Cost
 \$437,195.10


 150 6000

Budgeted FY22 Staffing
 \$258,360.20

2.2 Additions:
 (0.5) Program Coordinator
 (2) EMS Responders
 (1) Resource Technician

2.3 Additions:
 (0.5) Program Coordinator
 (2) EMS Responders
 (1) Resource Technician


 50 2500 FY21 Staffing
 \$170,288.00

(1) Community Health Director
 (1) EMS Responder
 (1) Resource Technician
 (0.5) Program Specialist

Total: \$178,834.90

Total: \$178,834.90

(1) Program Coordinator
 (3) Resource Techs

Measures:

We will measure success of the CRP individualized care programs through the lenses of successful resource pairing, improvements in the patients' quality of life scores, decrease in unnecessary utilization of the EMS system. Success of the CRP program also can be measured by tracking a reduction in missed primary care provider (PCP) appointments, and hospital admissions. Community Health impact is measured through participation rates.

Total CRP Patient Enrollment

Program	2021	2020	2019	2018	2017
Case Management	44	32	38	37	12
Wellness Checks	128	93	76	38	0
Recovery Patients	47	21	0	0	0
Total Incidents	219	146	114	75	12

2020 Utilization Results*

Emergency Department Utilization	-28%
Hospital Admissions	-62%
Primary Care Compliance	+22%

*These numbers reflect 6-month time window pre/post program enrollment, thus only patients having graduated from CRP for six months were analyzed in this dataset.

WHICH STRATEGIC GOAL DOES THIS PROJECT SUPPORT?

X	Equitable Community						
	Sustainable Community						
X	A Great Place to Live & Experience						
	Resilient Local Economy						
X	"Best in Class" Neighbor Services						

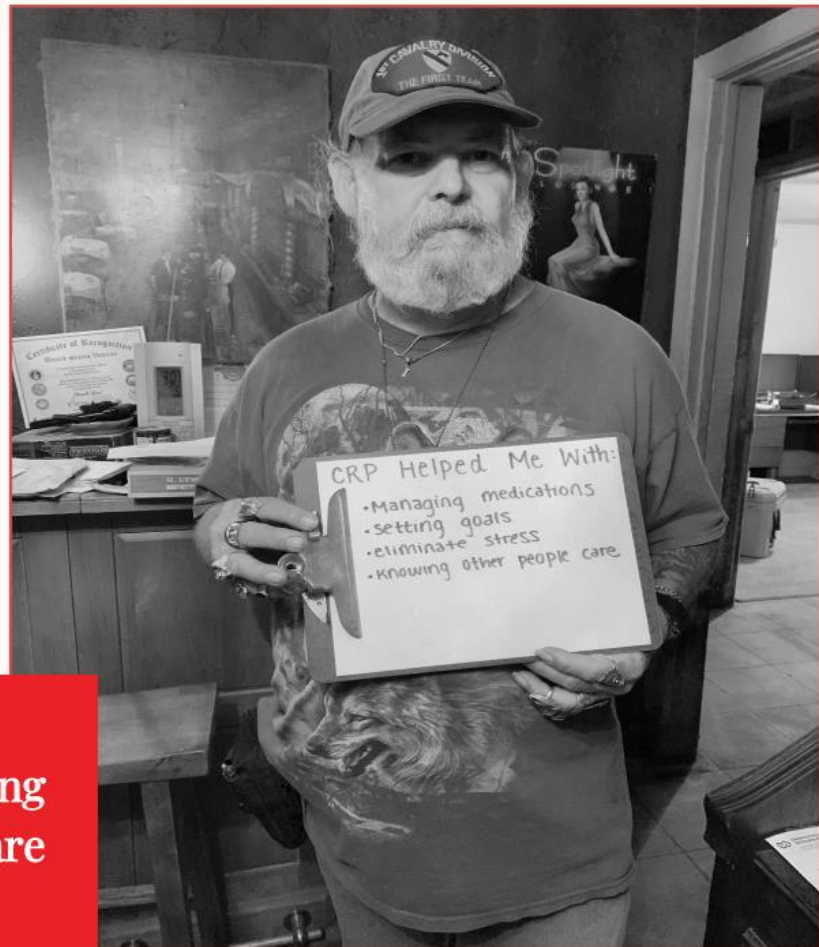
DESCRIBE HOW THE PROJECT WOULD SUPPORT THE STRATEGIC PLAN:

The Community Resource Paramedicine (CRP) program focuses on addressing systemic issues and attempts to shift community culture, specifically related to equity and access. The CRP model focuses on equity, inclusion and access to quality healthcare services while assisting community physicians' capacity to expand services. The Community Health program helps ensure access to safe housing opportunities and bridges gaps in significant social issues including food insecurity through innovative partnerships. The community health program revitalizes public infrastructure to meet the needs of neighbors including having mobile response units staffed by community paramedics, who respond in real time with advanced tools.

CONNECTED



CONNECTED



Help in overcoming
social obstacles and navigating healthcare



QUESTIONS ?

