

#150083

FALL 2015 PROPOSED SERVICE CHANGES*

August 17, 2015 – January 3, 2016



*Refer to schedule book for specific times

Prepared by Matthew Muller

Fall Service Hours

Daily Service Hours			
	<i>Weekday</i>	<i>Saturday</i>	<i>Sunday</i>
Fall 2014	1,356	332	119
Fall 2015	1,388	340	118
Change	2.4%	2.4%	-0.8%

Fall Service Funding

Funding Share ¹				
	<i>City</i>	<i>County</i>	<i>UF²</i>	<i>SF³</i>
Weekday	28%	4%	63%	5%
Saturday	40%	5%	55%	0%
Sunday	0%	0%	100%	0%

1. Includes state and federal funding
2. UF = University of Florida
3. SF = Santa Fe College

Calendar

❖ No Service:

- September 7, 2015
- November 11, 2015
- November 26, 2015
- December 25, 2015
- January 1, 2016

❖ Reduced Service:

- November 6, 2015
- December 12 - 23, 2015
- December 26 – 31, 2015

❖ Holiday Service (Sunday Service):

- November 27, 2015
- December 24, 2015

Note: Expanded holiday service is currently being considered for all holidays except Christmas Day and Thanksgiving Day.

Proposed Service Changes

- I. No changes
- II. Name changes
- III. Alignment changes
- IV. New routes
- V. Running time adjustments
- VI. Service reductions
- VII. Service enhancements
- VIII. Minor changes

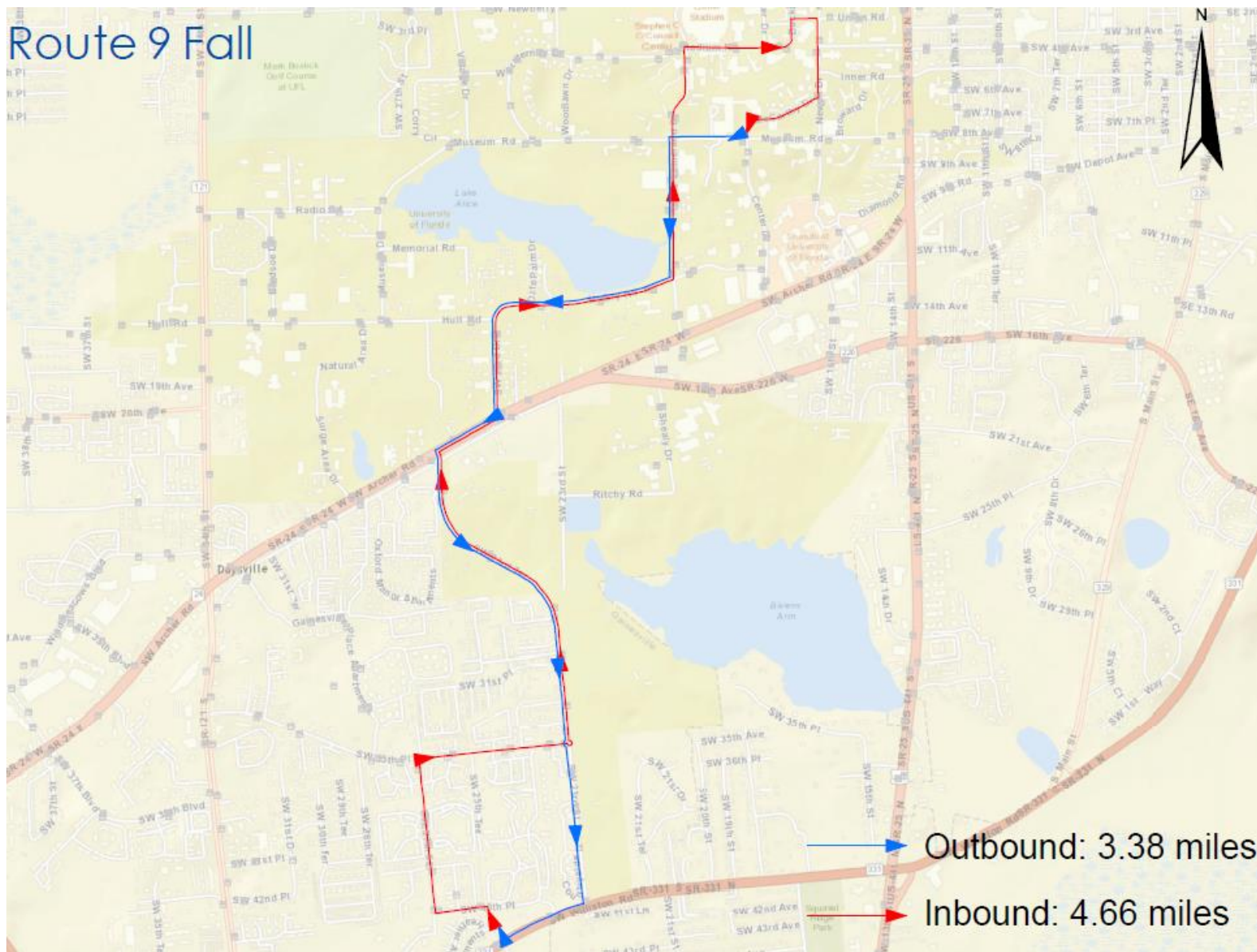
No Changes

- ❖ Route 2 – summer schedule/alignment
- ❖ Route 46 – spring schedule/summer alignment
- ❖ Route 75 – summer schedule/alignment
- ❖ Route 125 – spring schedule/alignment
- ❖ Route 711 – summer schedule/alignment

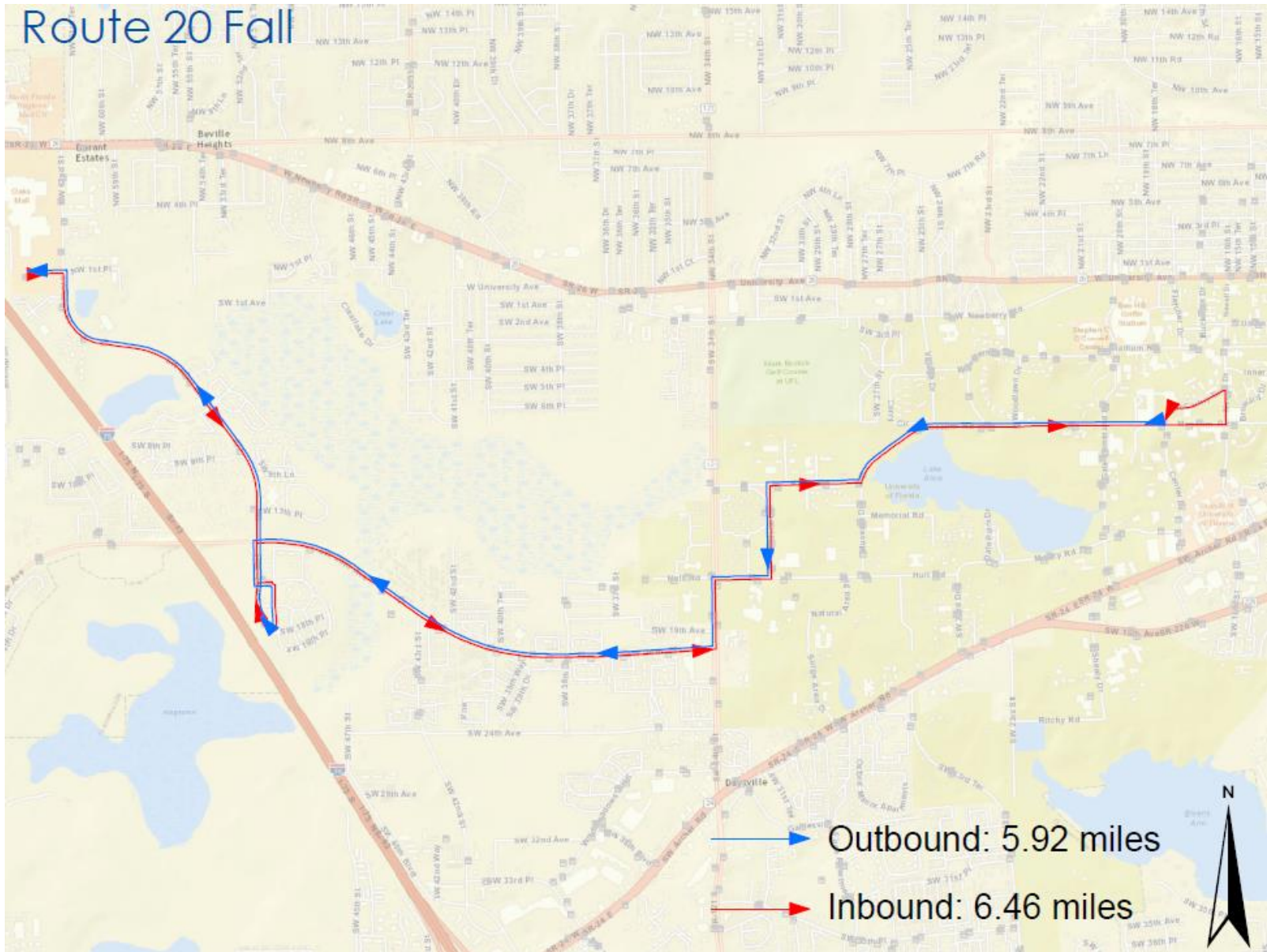
Name Changes

❖ Route 38T *renamed* Route 22

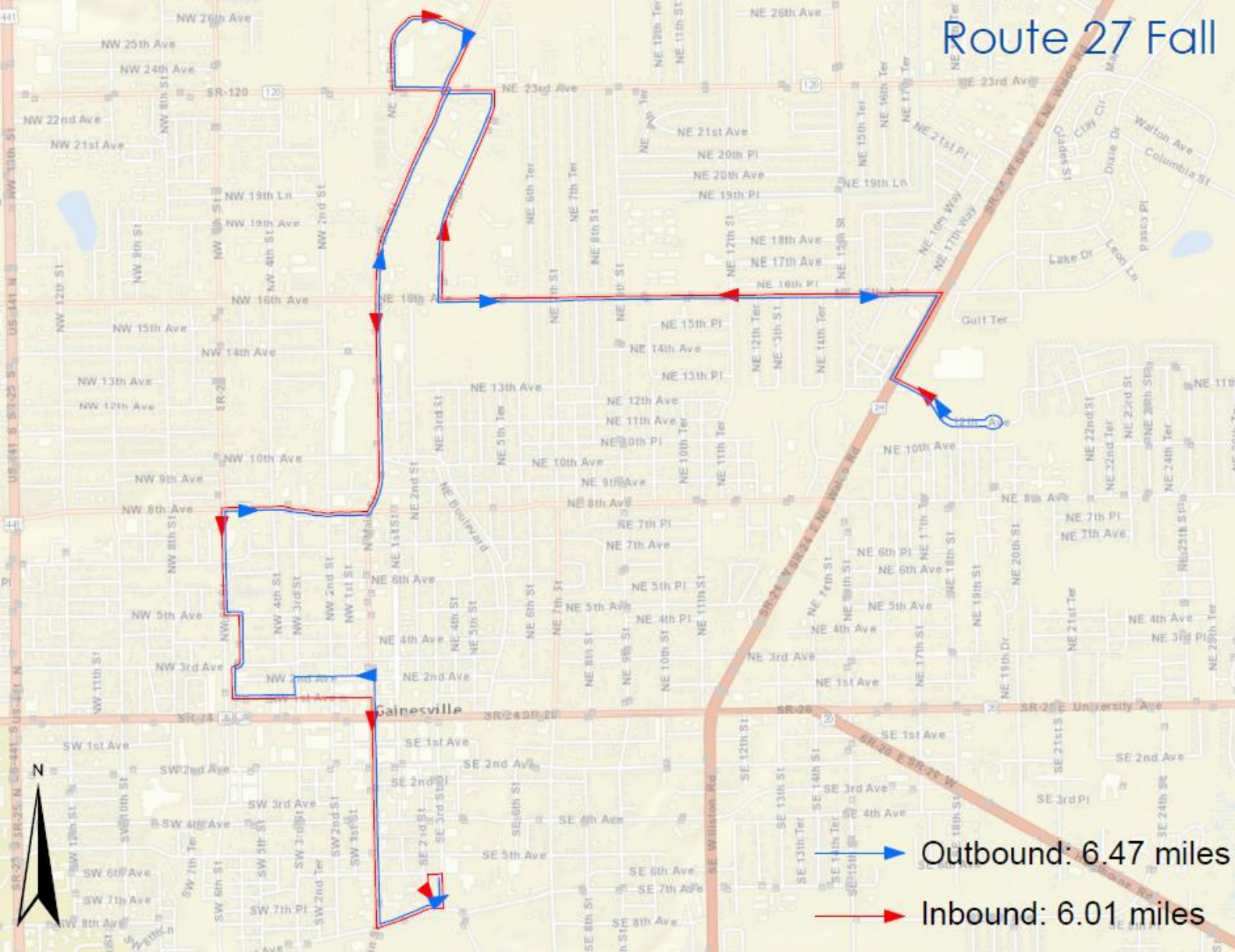
Alignment Change: Route 9



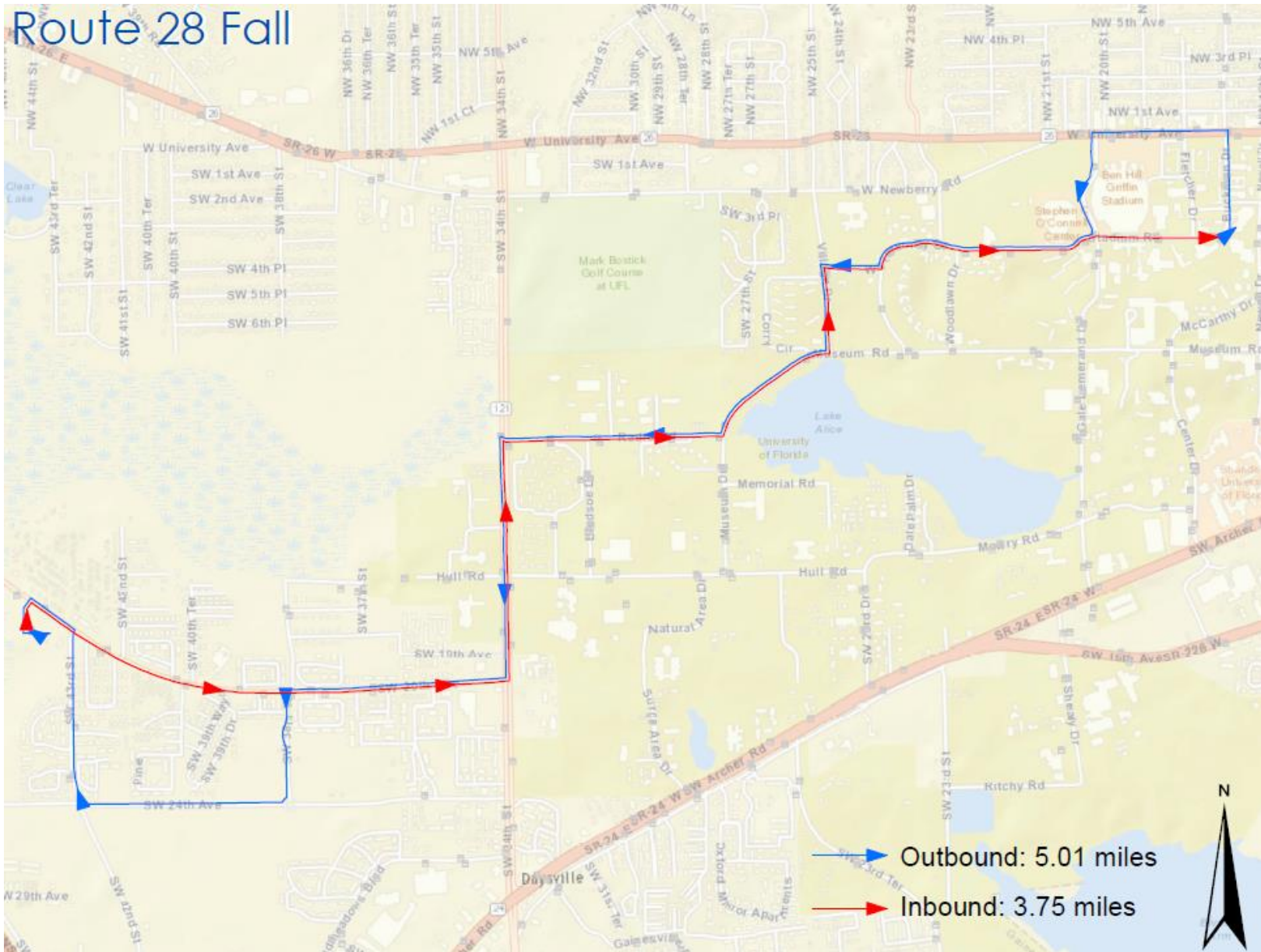
Alignment Change: Route 20



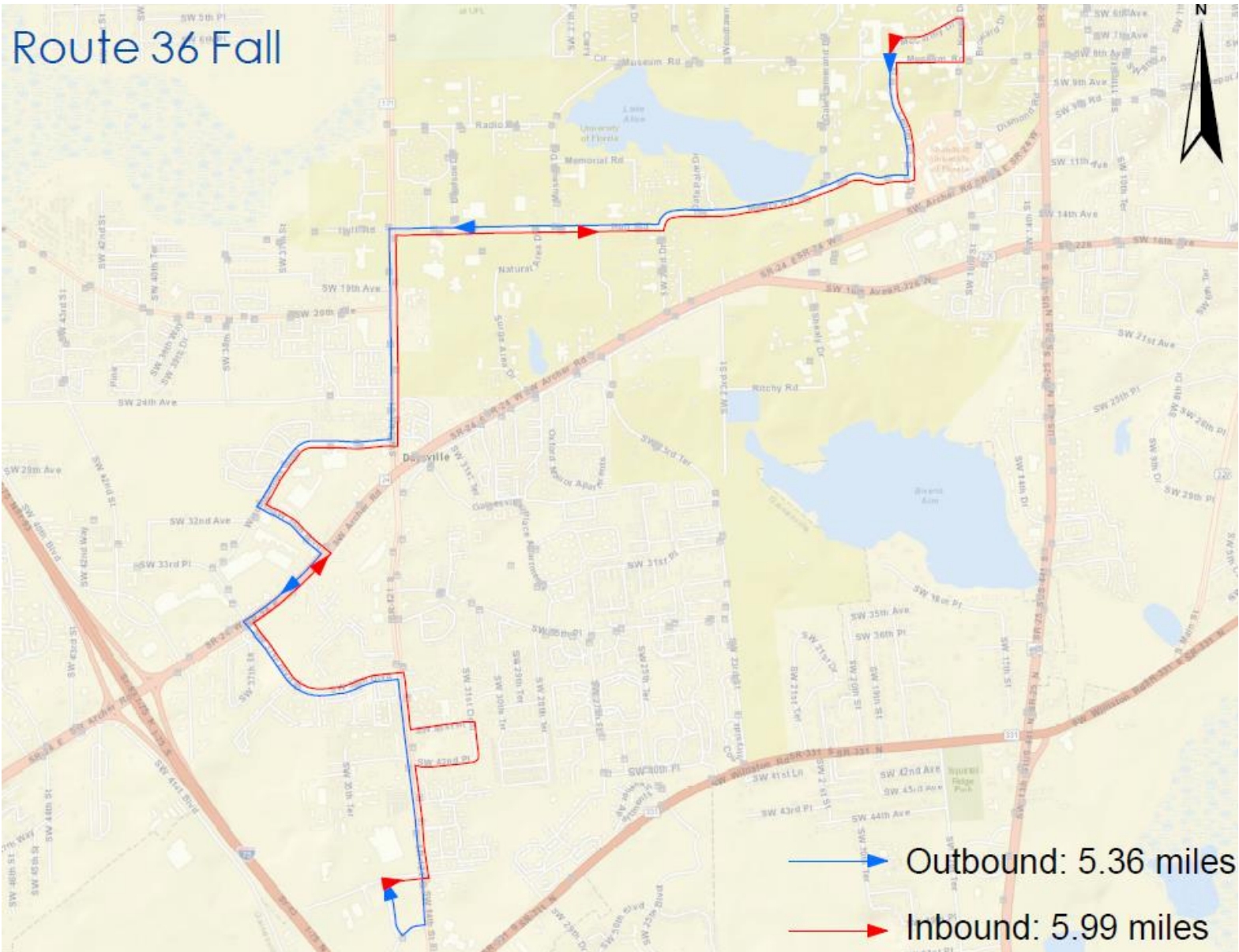
Alignment Change: Route 27



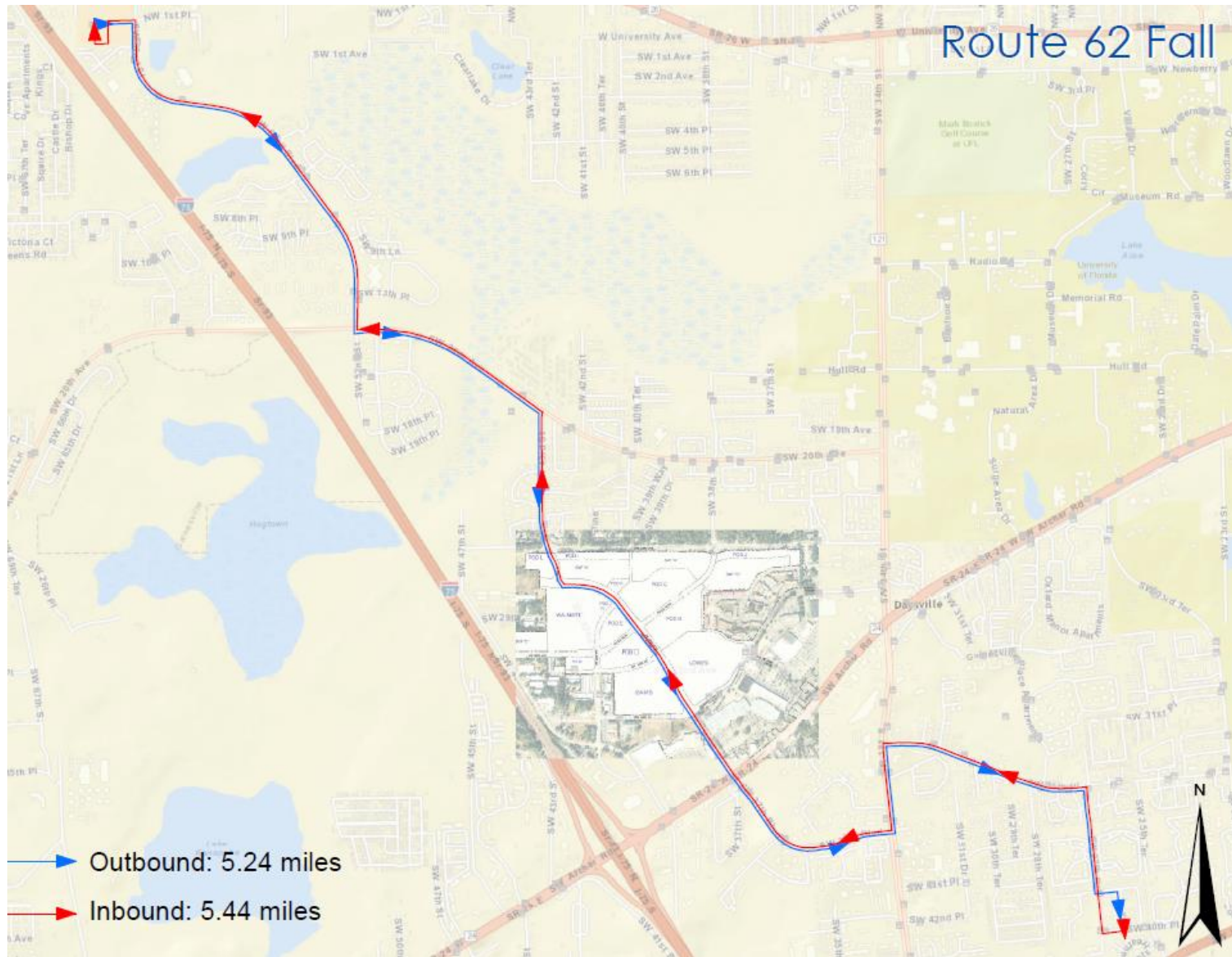
Alignment Change: Route 28



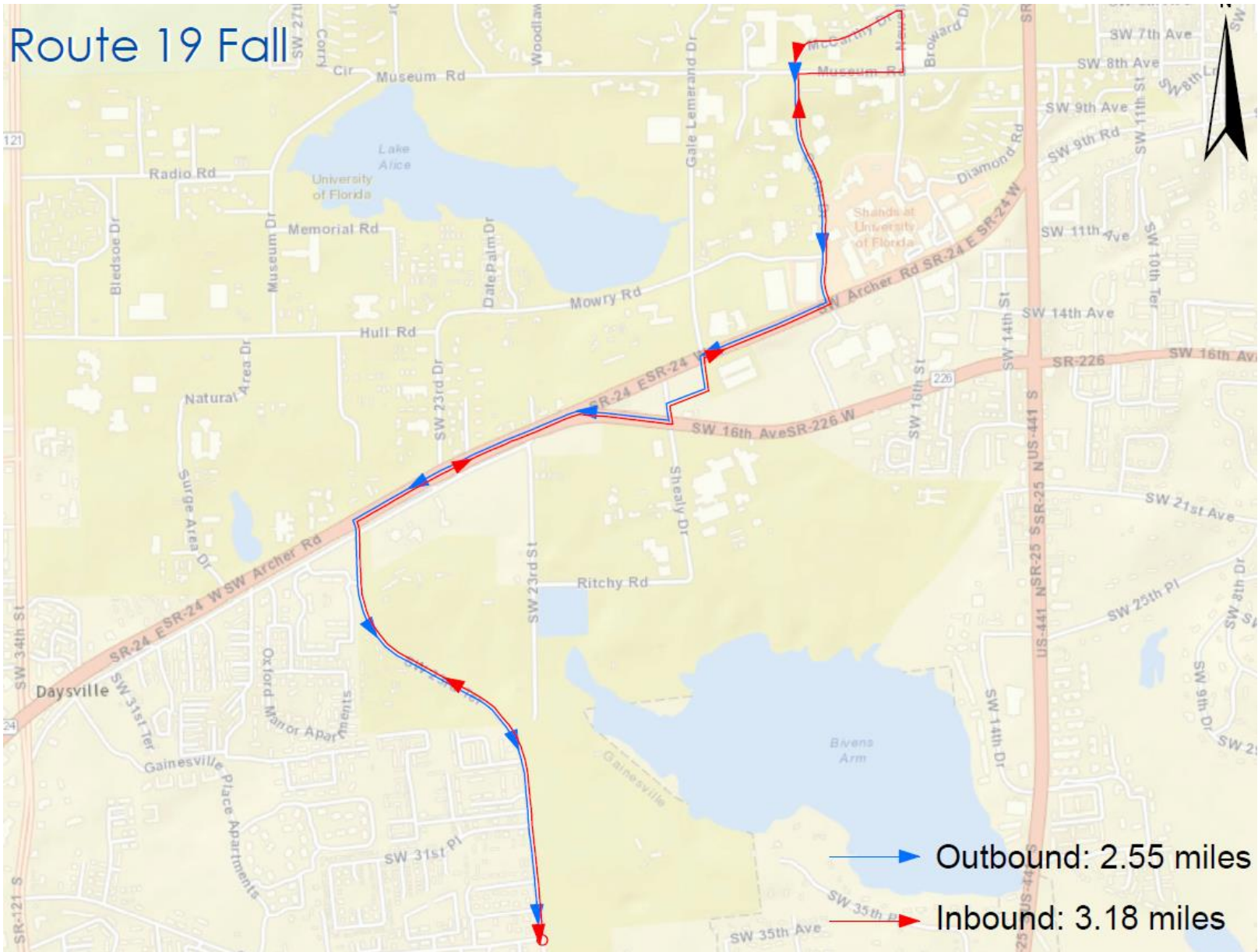
Alignment Change: Route 36



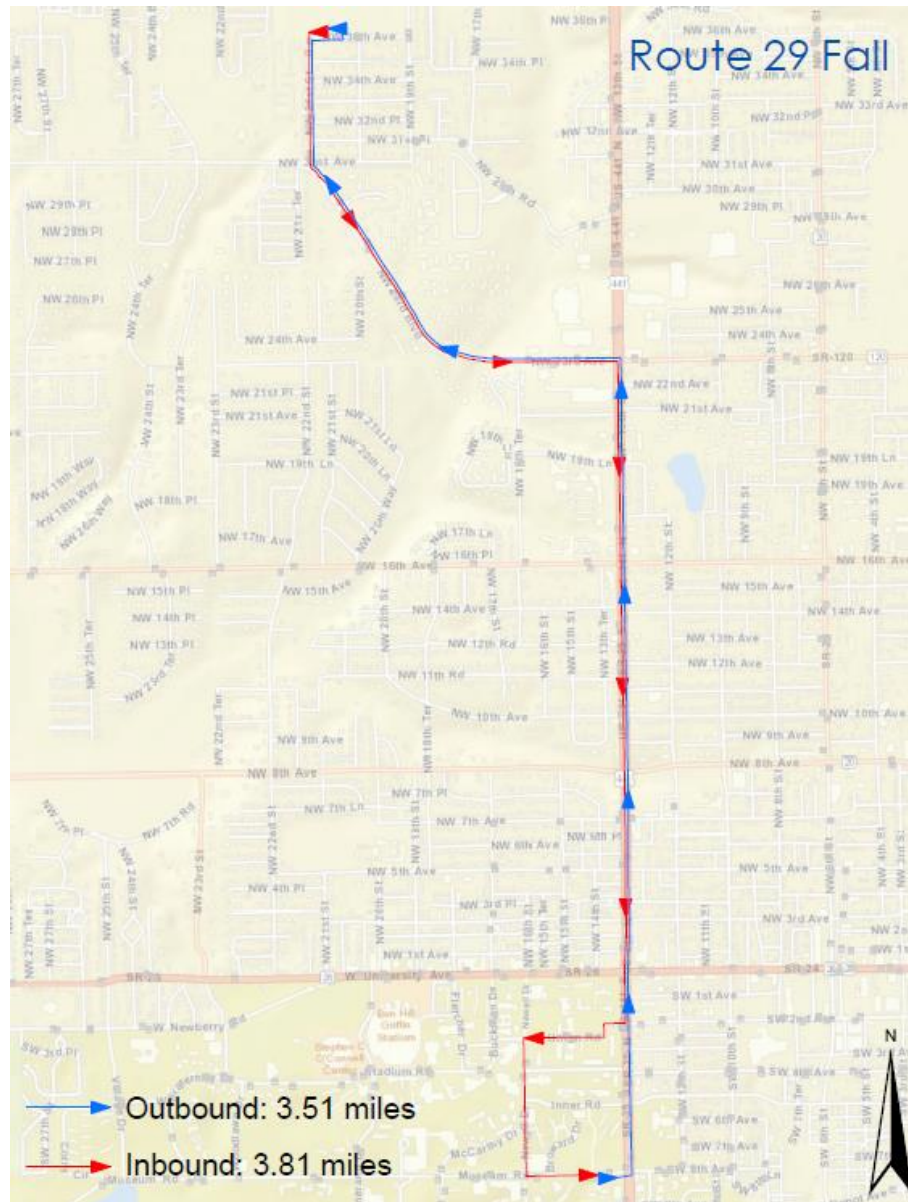
Alignment Change: Route 62



New Route: Route 19

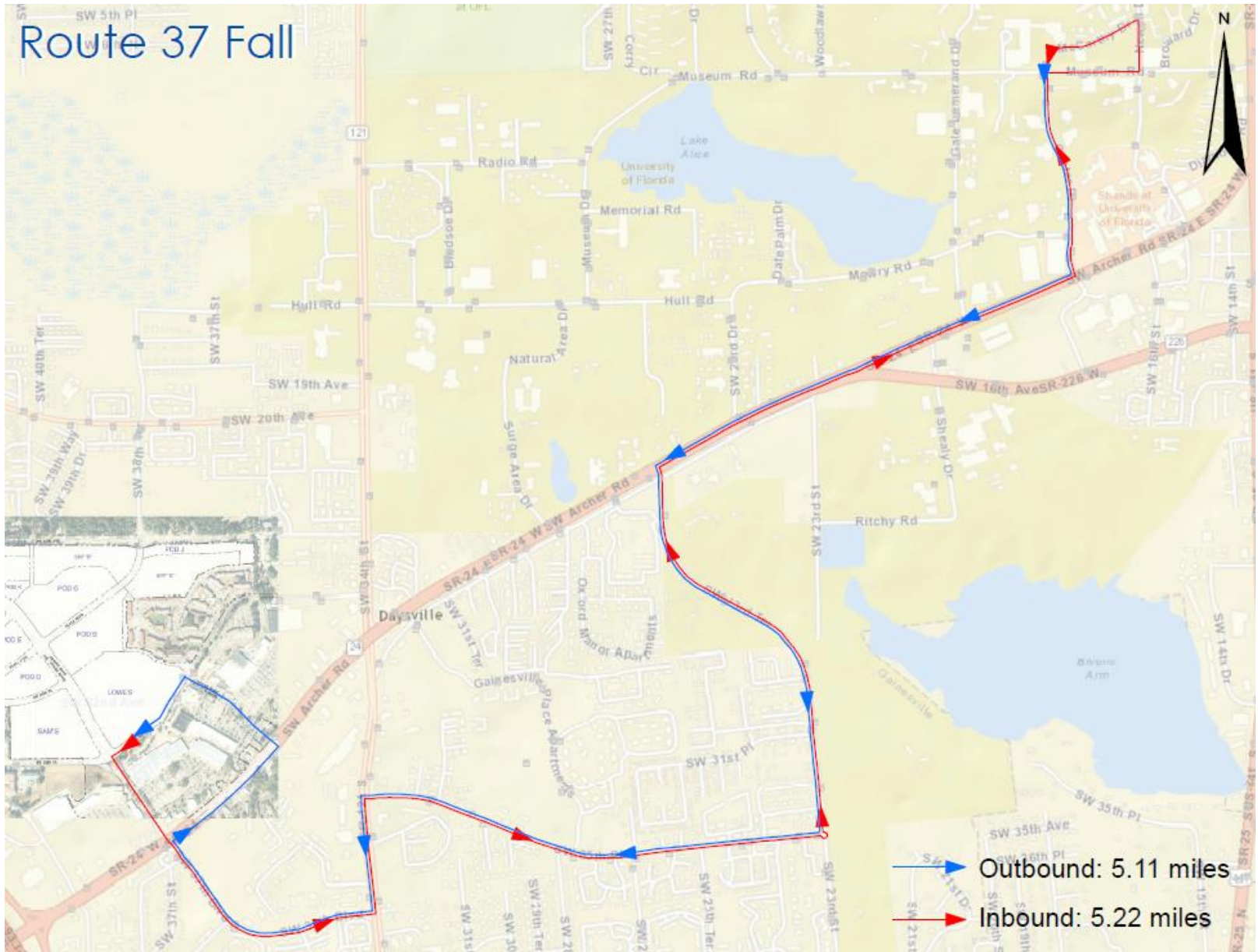


New Route: Route 29 Fall

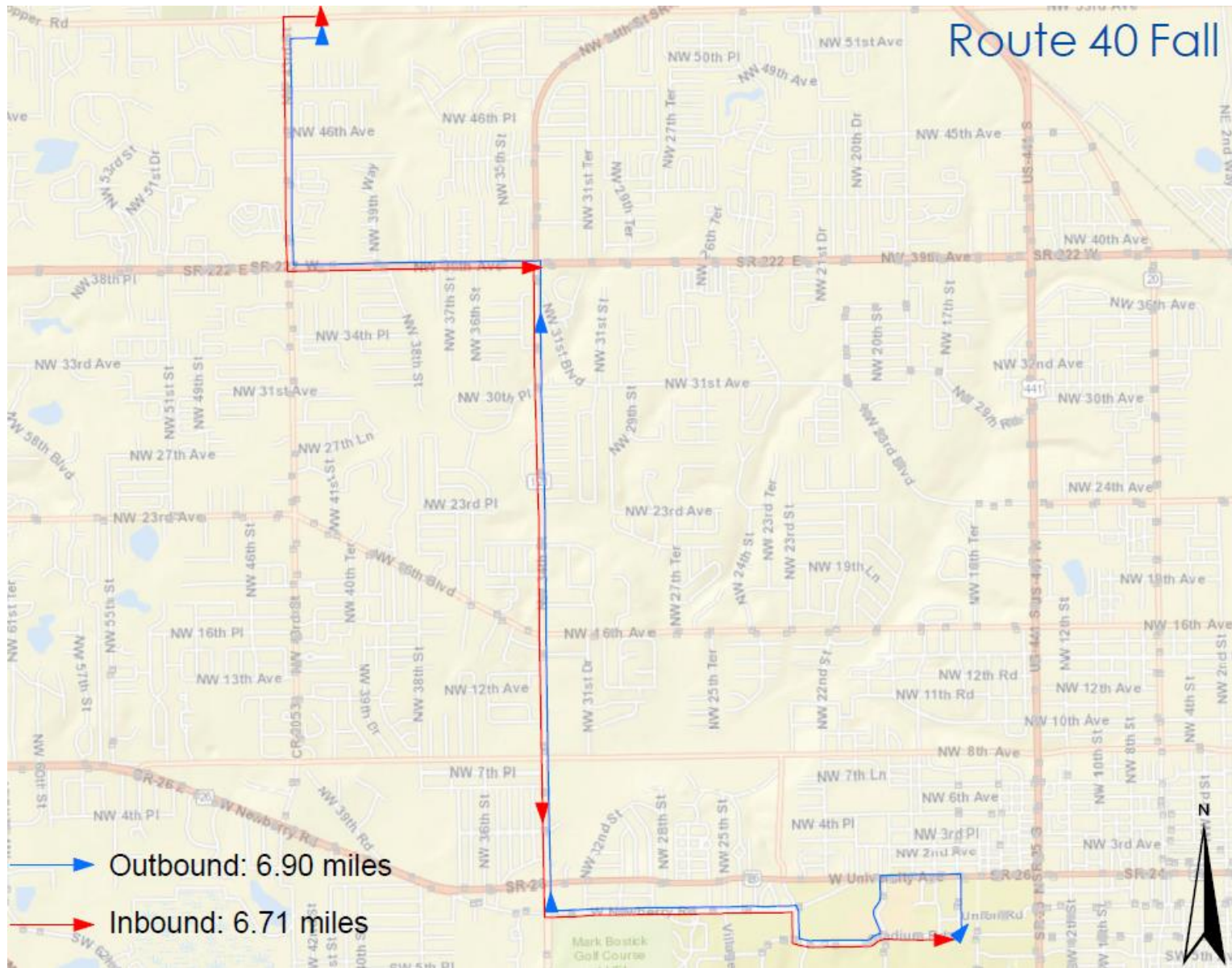


New Route: Route 37

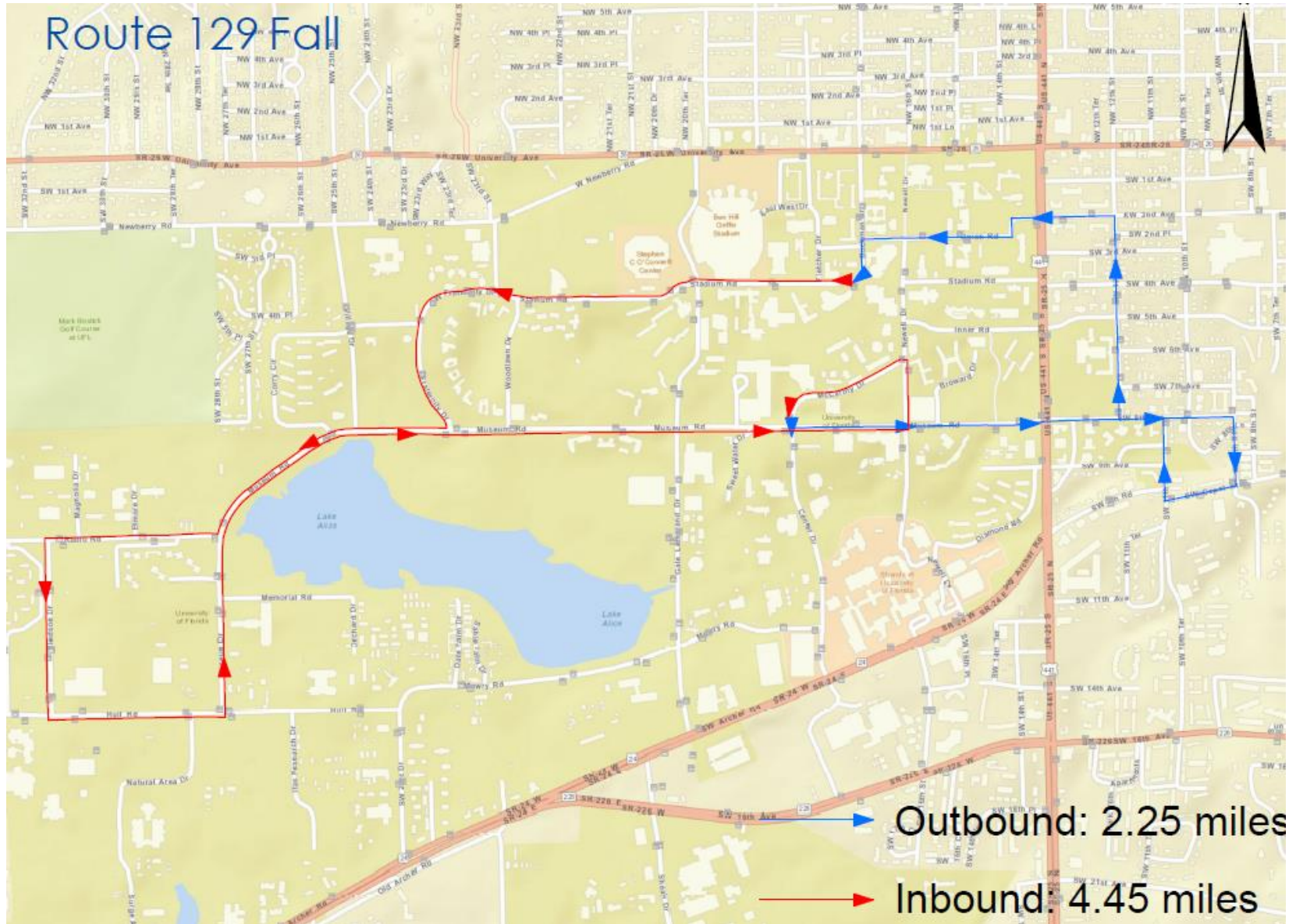
Route 37 Fall



New Route: Route 40

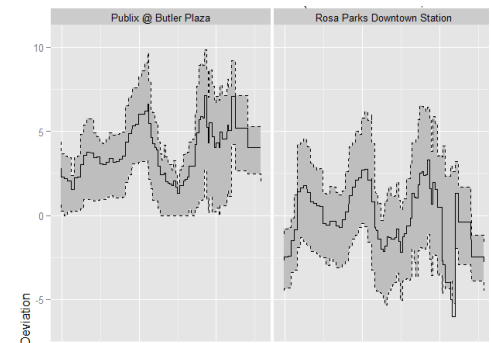
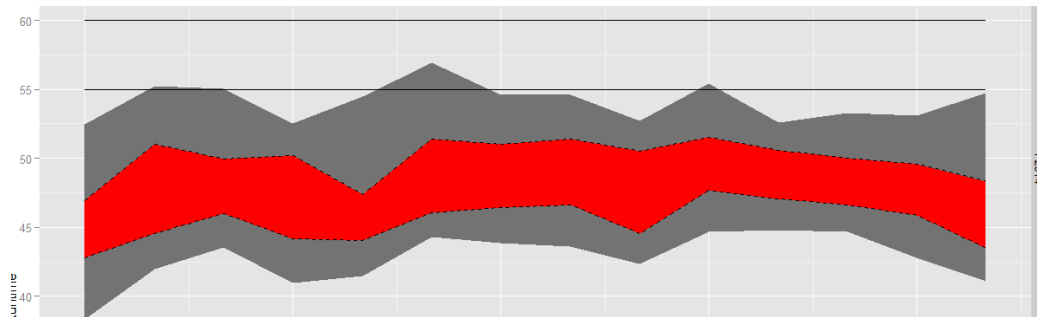


New Route: Route 129



Running Time Adjustments

- ❖ Comprehensive, system-wide adjustment to route running times.
 - Improve on-time performance and service reliability
 - Typically <10 minutes
- ❖ Tested methodology last fall/spring on six routes
 - Average increase in on-time performance was 14%
- ❖ All routes except those listed as “no change” will be adjusted.
 - Applies to weekdays and weekends



Service Reductions

❖ Eliminated routes

- Route 21 (Cabana Beach – Reitz Union)
- Route 41 (Beaty Towers – Pine Ridge Walmart)

❖ Decreased frequency (≥ 3 minutes)

- Route 9 (Hunters Run – Reitz Union) [Weekdays and Weekends]
- Route 16/17 (Beaty Towers – Rosa Parks/Sugar Hill) [Weekdays]

❖ Decreased service span (≥ 30 minutes)

- Route 9 (Hunters Run – Reitz Union) [Weekends]

Service Enhancements

❖ Increased service span (≥ 30 minutes)

- Route 20 (Oaks Mall – Reitz Union) [Saturday]
- Route 28 (Hub – Forest Park)
- Route 35 (SW 35th Place – Reitz Union) [Saturday]
- Route 39 (SF – Airport)
- Route 62 (Oaks Mall – Lexington Crossing)

❖ Increased frequency (≥ 3 minutes)

- Route 1 (Rosa Parks – Butler Plaza) [Weekdays and Saturdays]
- Route 5 (Rosa Parks – Oaks Mall) [Weekdays PM peak]
- Route 20 (Oaks Mall – Reitz Union) [Weekdays]
- Route 28 (Hub – Forest Park) [AM peak]

Minor Changes

❖ No change in service hours

- Route 3 (Rosa Parks – N Main Street Post Office)
 - Will operate continuously between 9:30AM – 5:30PM
 - Previously operated as separate morning and afternoon pieces
- Route 27 (Rosa Parks – NE Walmart)
 - Will operate between 9:30AM – 5:30PM
 - Previously operated 7:00AM – 3:00PM
- Route 126 (UF Nighttime Circulator)
 - Previously operated with four buses
 - Two buses shifted to form route 129 which circulates in opposing direction

Questions/Comments

Matthew Muller 352-393-7820

Julian Lauzan 352-393-7833