

# Electric System Rate Proposals

Item #140194  
September 3, 2015

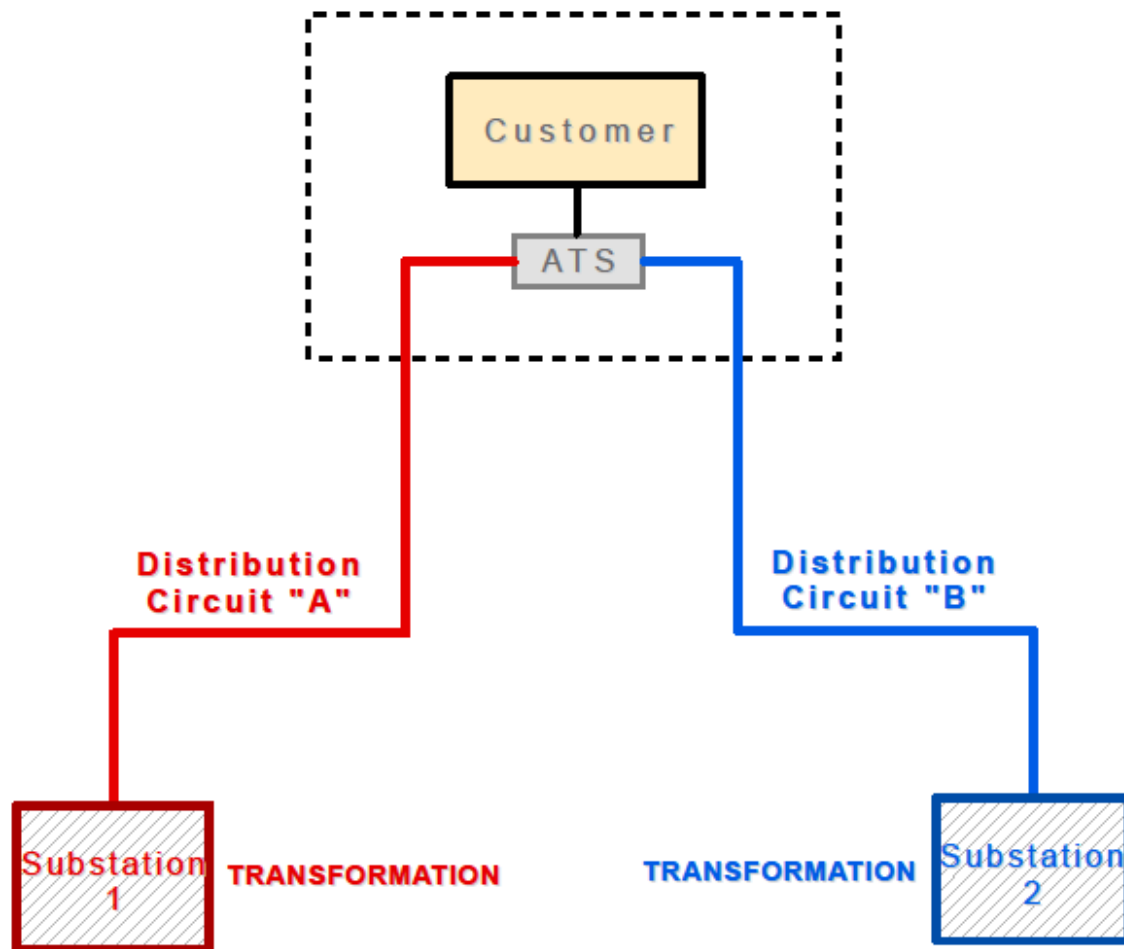


# Dual Circuit Capacity Rate

## Purpose:

1. Certain customers desire a heightened level of service reliability (approaching 99.999%).
2. Dual circuit service satisfies that desire.
3. Additional cost and operating constraint is imposed on the electric system to provide such service.
4. The costs resultant should be paid for by the customer that receives the benefit.

# DUAL CIRCUIT CAPACITY RATE



# Dual Circuit Capacity Rate

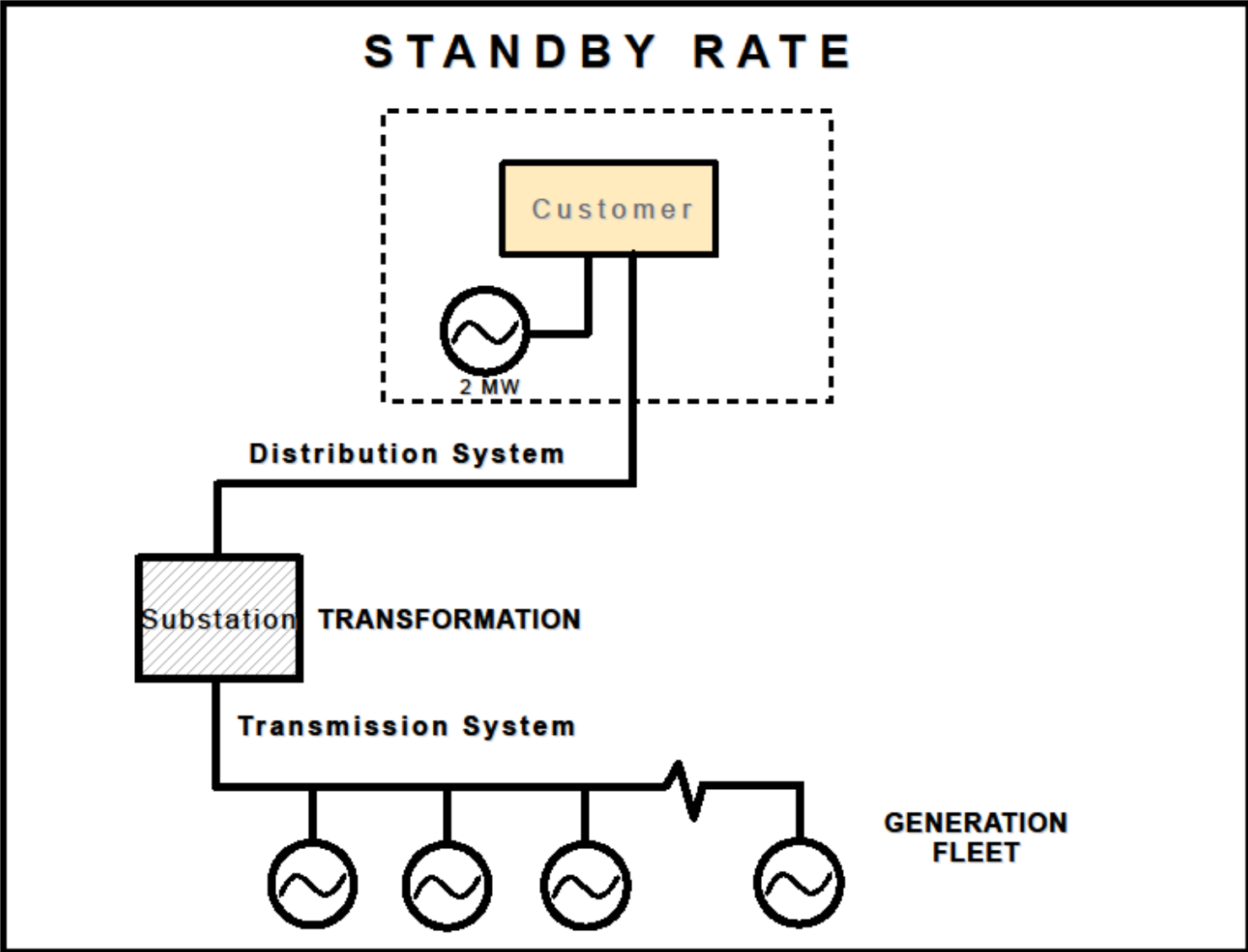
## Proposal:

1. Distribution Charge: \$2.25/kW/Month  
Transformation Charge: \$1.20/kW/Month  
**Total: \$3.45/kW/Month**
2. Five year term
3. Grandfathering Provision (Two years)

# Standby Capacity Rate

## Purpose:

1. Certain customers desire a heightened level of service reliability (approaching 99.999%) or greater operational efficiencies.
2. On-site generation satisfies that desire.
3. Additional cost and operating constraint is imposed on the electric system to provide such service on an intermittent or “standby” mode.
4. The costs resultant should be paid for by the customer that receives the benefit.



# Standby Capacity Rate

## Proposal:

1. Distribution Charge:	\$2.25/kW/Month
Transformation Charge:	\$1.20/kW/Month
Transmission Charge:	\$.25/kW/Month
Generation Charge:	\$.05/kW/Month
	<b>Total: \$3.75/kW/Month</b>

2. Lump sum option payment option
3. Based on Contracted Demand
4. Five year term

# Recommendation

The City commission direct the City Attorney to draft, and the Clerk of the commission to advertise an ordinance to adopt the Dual Circuit Capacity and Standby Capacity electric rates.