

TOPOGRAPHIC SURVEY

LOCATED IN SECTION 5, TOWNSHIP 10 SOUTH, RANGE 20 EAST, ALACHUA COUNTY, FLORIDA


LEGEND:

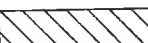
- FOUND 4"x4" CONCRETE MONUMENT (NO ID) UNLESS OTHERWISE NOTED
- FOUND DRILL HOLE
- FOUND 1" IRON PIPE (NO ID) UNLESS OTHERWISE NOTED
- FOUND 5/8" STEEL REBAR & CAP MARKED AS NOTED
- △ FOUND NAIL AND DISK STAMPED "C&E LB 5075"
- ⊕ BENCHMARK
- ⊕ FIRE HYDRANT
- CLEANOUT
- TREE (SIZE AND TYPE AS NOTED)
- ⊕ GAS VALVE
- ⊕ STORM INLET
- ⊕ CONCRETE LIGHT POLE
- ⊕ CABLE TELEVISION BOX
- ⊕ ELECTRIC BOX
- ⊕ ELECTRIC HANDHOLE
- ⊕ ELECTRIC METER
- ⊕ ELECTRIC MANHOLE
- ⊕ FIBER OPTIC BOX
- ⊕ GROUND LIGHT FIXTURE
- ⊕ GAS METER
- ⊕ GUY ANCHOR
- ⊕ WOODEN POWER POLE
- ⊕ IRRIGATION CONTROL VALVE
- ⊕ LIGHT POLE
- ⊕ SIGN WITH ONE POLE
- ⊕ SIGN WITH TWO POLES
- ⊕ PRESSURE INDICATOR VALVE
- ⊕ SPIGOT
- ⊕ SANITARY SEWER MANHOLE
- ⊕ STORM SEWER MANHOLE
- ⊕ TELEPHONE JUNCTION BOX
- ⊕ TELEPHONE MANHOLE
- ⊕ TELEPHONE PEDESTAL
- ⊕ TRANSFORMER
- ⊕ WELL
- ⊕ WATER VALVE
- ⊕ SANITARY SEWER CLEANOUT
- ⊕ WATER METER
- ⊕ SOLLARD
- ⊕ MONITORING WELL
- ⊕ IRRIGATION CONTROL VALVE BACKFLOW PREVENTOR

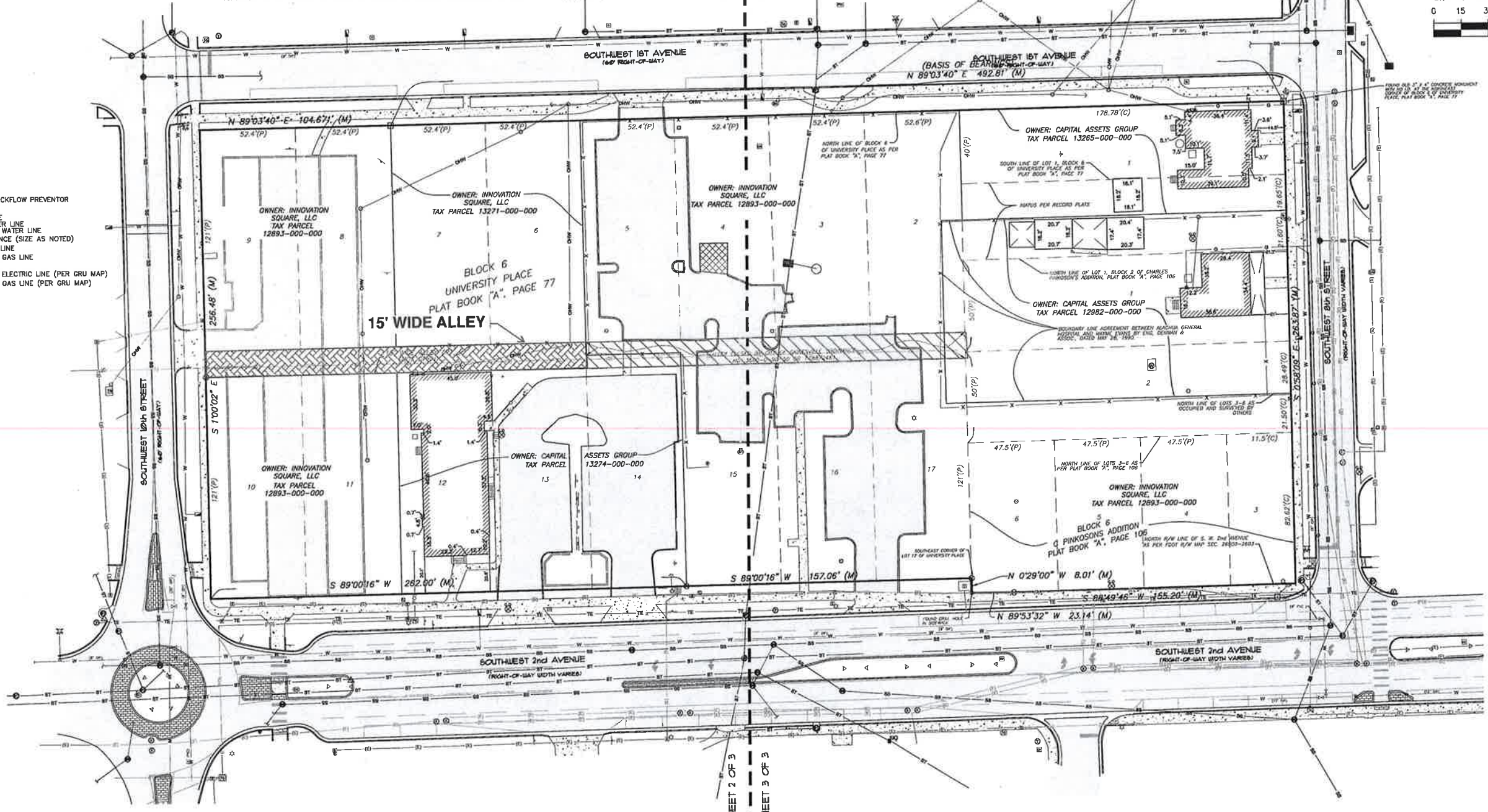
- LOB = LOBLOLLY PINE
- LO = LIVE OAK
- LAO = LAUREL OAK
- MPL = MAPLE
- WO = WATER OAK
- SYC = SYCAMORE
- HACK = HACKBERRY
- POP = TULIP POPLAR
- SQU = SWEETGUM
- MYR = MYRTLE
- SHO = SHUMARD OAK
- HAG = HACHOLIA
- CDR = CEDAR
- CAMP = CAMPHOR
- MPH = MILES PER HOUR
- INV = INVERT
- RCP = REINFORCED CONCRETE PIPE
- PVC = POLYVINYL CHLORIDE
- DIP = DUCTILE IRON PIPE
- VCP = VITRIFIED CLAY PIPE
- CONC = CONCRETE

SURVEYOR'S NOTES:

1. BEARINGS SHOWN HEREON ARE BASED ON AN ASSUMED VALUE OF NORTH 89°03'40" EAST FOR THE NORTH LINE OF BLOCK 6 OF UNIVERSITY PLACE, ACCORDING TO THE PLAT, THEREOF RECORDED IN PLAT BOOK "A", PAGE 77 OF THE PUBLIC RECORDS OF ALACHUA COUNTY, FLORIDA.
2. THIS IS NOT A BOUNDARY SURVEY. BOUNDARY INFORMATION SHOWN HEREON IS BASED ON A PREVIOUS SURVEY PERFORMED FOR SHANDS AT ASH CAMPUS BY VEDDER & ASSOCIATES UNDER FILE NUMBER V0489502, DATED JANUARY 22, 1987.
3. UNDERGROUND UTILITIES SHOWN HEREON ARE APPROXIMATE AND BASED ON VISIBLE SURFACE EVIDENCE, IN CONJUNCTION WITH PAINT MARKINGS DELINEATED BY OTHERS AND UTILITY MAPS PROVIDED BY GAINESVILLE REGIONAL UTILITIES (GRU). NO EXCAVATION OF UNDERGROUND UTILITIES WAS PERFORMED BY THIS SURVEYOR.
4. THE SURVEYOR HAS NO KNOWLEDGE OF UNDERGROUND FOUNDATIONS WHICH MAY ENCROACH.
5. INSTRUMENTS OF RECORD REFLECTING EASEMENTS, RIGHTS-OF-WAY, AND OR OWNERSHIP WERE NOT FURNISHED TO THE SURVEYOR EXCEPT AS SHOWN. SEARCH OF THE PUBLIC RECORDS HAS NOT BEEN DONE BY THIS SURVEYOR.
6. ONLY TREES MEASURED AT CHEST HEIGHT TO BE 8" IN DIAMETER OR GREATER WERE LOCATED AND SHOWN HEREON.
7. FENCES, SYMBOLS, MONUMENTATION AND UTILITIES SHOWN HEREON MAY BE EXAGGERATED FOR PICTORIAL PURPOSES ONLY AND MAY NOT BE SHOWN TO SCALE.
8. THIS MAP CONSISTS OF 3 SHEETS IN TOTAL. ONE SHEET IS NOT COMPLETE WITHOUT THE OTHERS. SEE SHEETS 2 AND 3 FOR DETAILED TOPOGRAPHIC INFORMATION.
9. THE VERTICAL INFORMATION SHOWN HEREON IS BASED ON U.S. COAST & GEODETIC SURVEY BENCHMARK #42 (4"x4" CONCRETE MONUMENT WITH BRASS DISK) WITH A PUBLISHED ELEVATION OF 157.547 (N.G.V.D. 1929 DATUM) LOCATED AT THE NORTHWEST CORNER OF S.W. 2ND AVENUE AND S.W. 8TH STREET AS SHOWN HEREON.
10. ADDITIONAL POINTS MAY BE FOUND BY TURNING ON THE SV-NODE* LAYERS IN THE SUPPLIED DIGITAL FILE.

 Portion of Alley to be vacated

 Portion of Alley vacated by ordinance 3660 0-90-50



SEE SHEET 2 OF 3

SEE SHEET 3 OF 3

SEE SHEET 2 OF 3

SEE SHEET 3 OF 3

Causseaux, Hewett, & Wa
 Engineering • Surveying • F
 6011 NW 1st Place, Gainesville, Florida
 Phone: (352) 331-5976 • Fax: (352) 331-5976 • www.chw.com

CHW

SCALE: 1" = 30'

THIS MAP IS NOT AN ORIGINAL SURVEY. IF YOU HAVE ANY QUESTIONS REGARDING THIS MAP, PLEASE CONTACT THE SURVEYOR.

TRIMARK PROPERTIES

| | |
|-----------------|------------|
| REVISION DATE: | 10/14/2011 |
| REVISION: | |
| PROJECT NUMBER: | 11-0340 |
| PROJECT NAME: | 400/27-61 |
| DATE: | 10/14/2011 |
| BY: | |
| CHECKED BY: | |
| DATE: | |

AARON H. HICKMAN
 Professional Surveyor & Mapper No. 6791

This map prepared by:
 Certificate of Authorization No. LB 5075
 NOT VALID WITHOUT THE SIGNATURE AND ORIGINAL RAISED SEAL OF A FLORIDA LICENSED SURVEYOR AND MAPPER

SHEET NO.: 1 OF 3