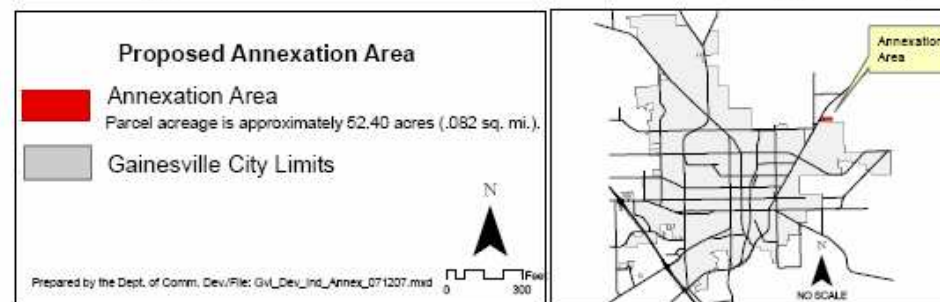
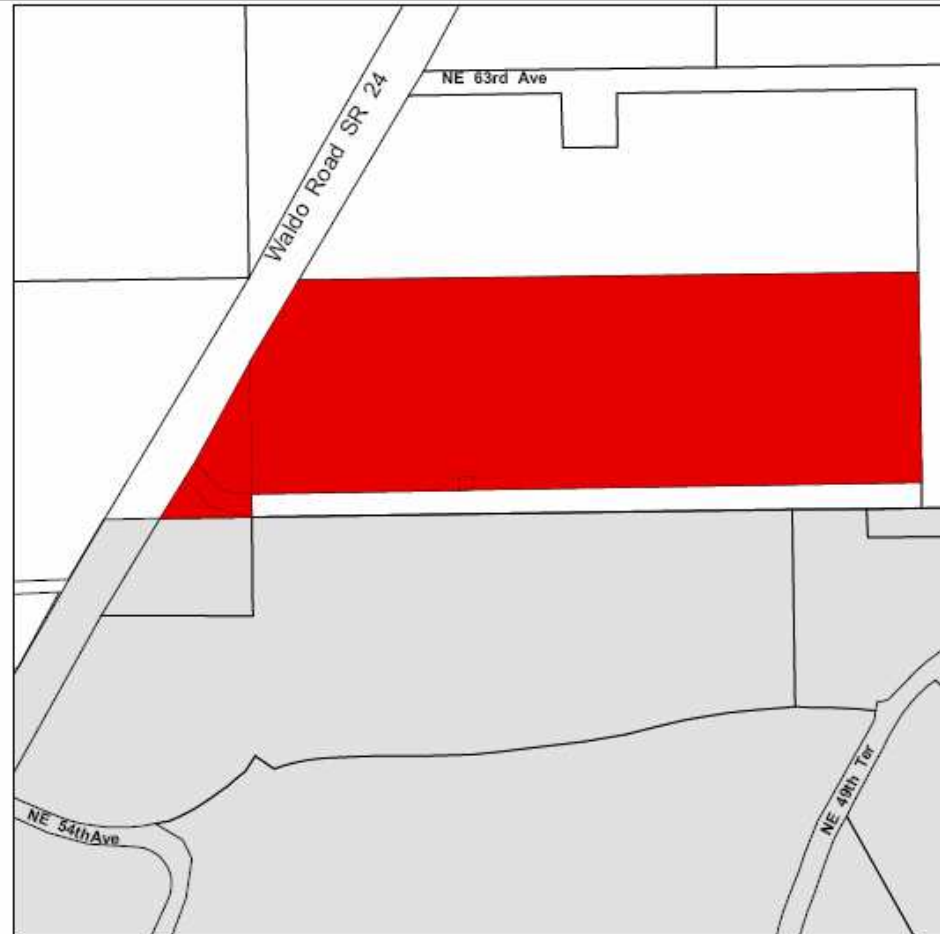
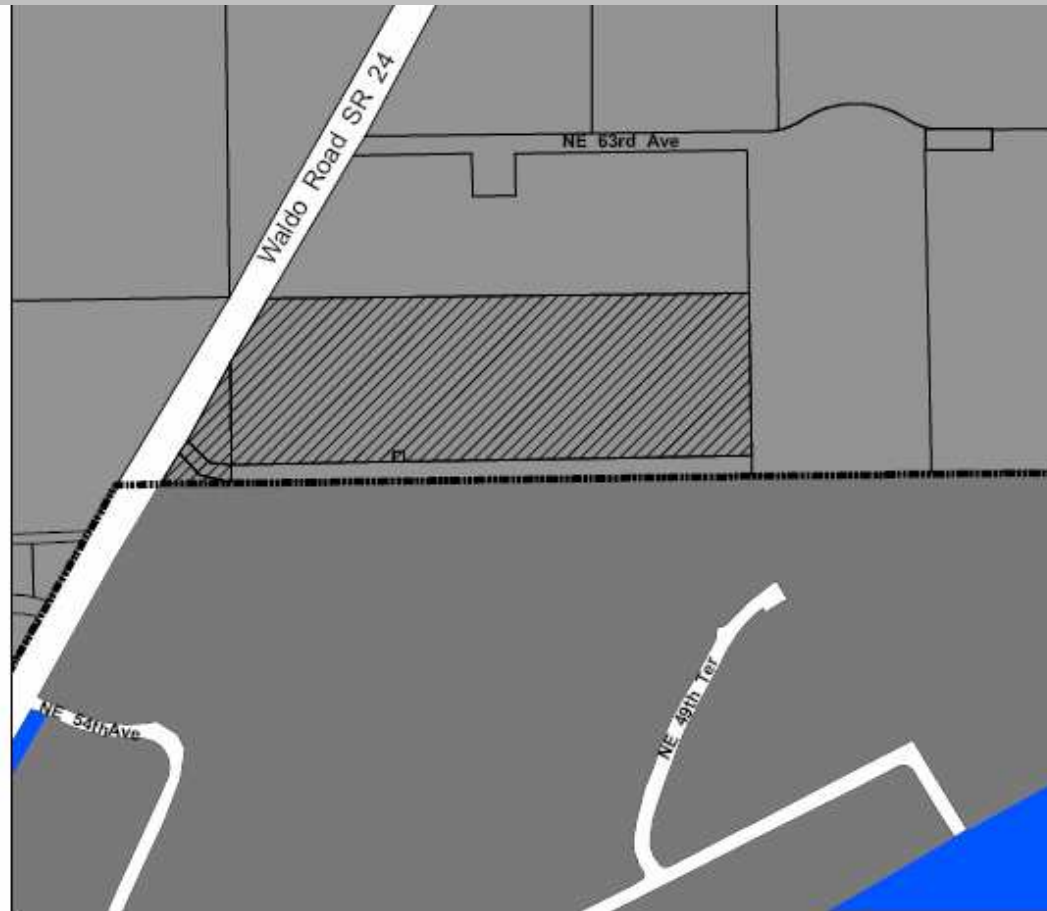


Gain Develop Industrial, LLC and City of Gainesville

Approximately 52.4 Acres



Gain Develop Industrial, LLC and City of Gainesville



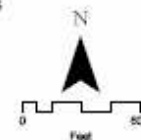
Proposed Annexation Area Land Use

Alachua County Land Use Category

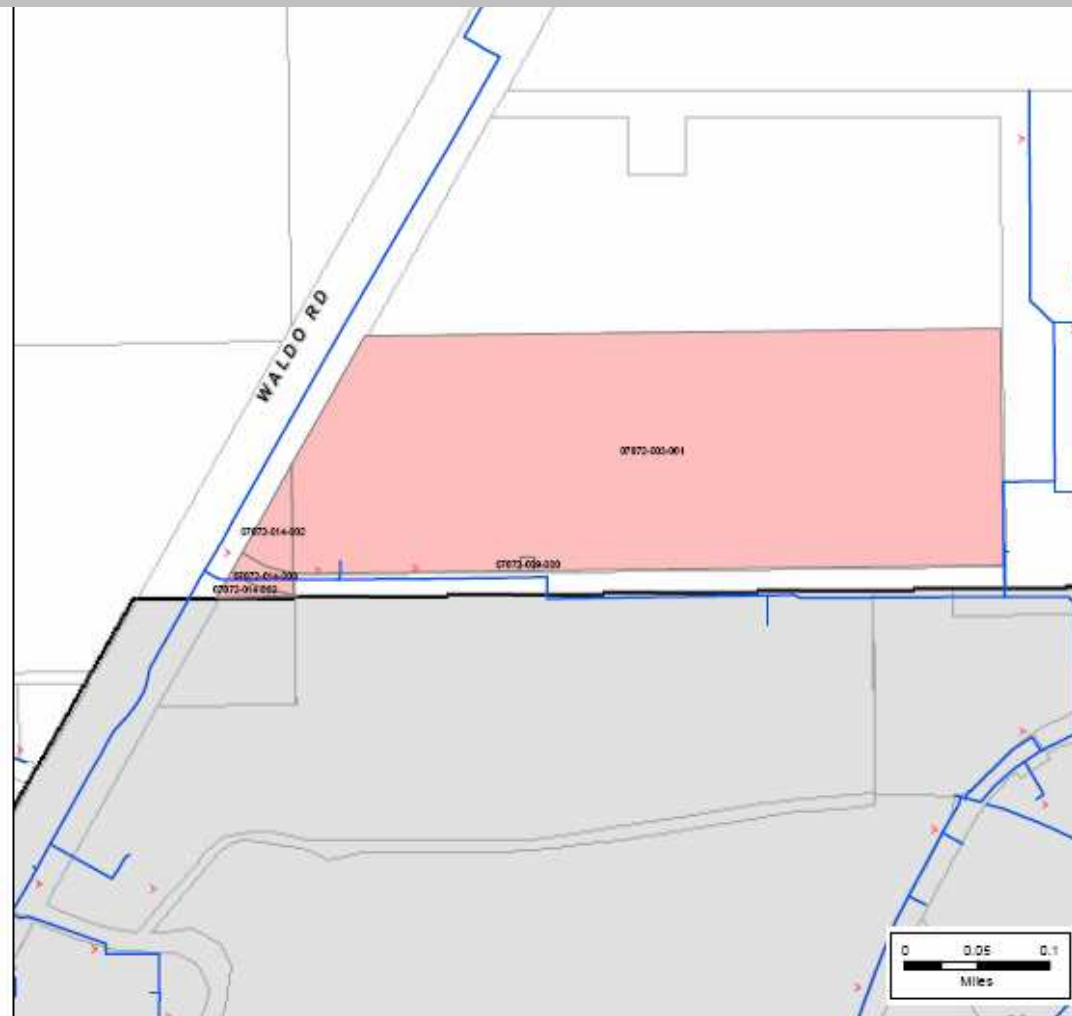
- Heavy Industrial
- Proposed Annexation Area

City of Gainesville Land Use Categories

- Industrial
- Public Facilities
- Gainesville City Limits



Gain Develop Industrial, LLC and City of Gainesville



Water Utility Facilities Near Proposed Annexation Area

Parcel Numbers 07872-003-001, 07872-014-002, 07872-014-003,
and 07872-009-000

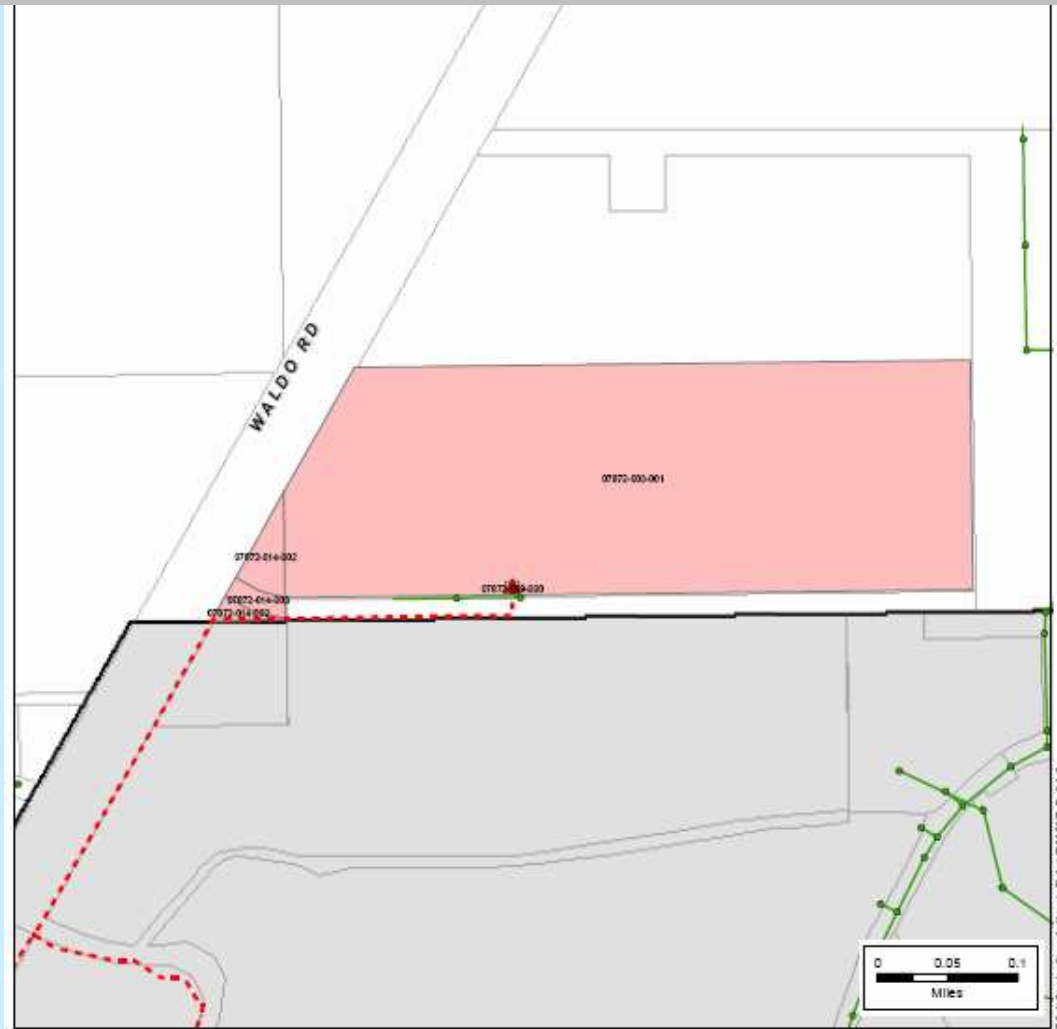
Legend

- Proposed Annexation Areas
- Gainesville City Limits
- Water Main
- Hydrant



© 2008 GRU. All rights reserved. Project Name: Annexation Study. Date: 11/11/08. Prepared by: GRU/ECET. By: C.A.G.

Gain Develop Industrial, LLC and City of Gainesville



Wastewater Utility Facilities Near Proposed Annexation Area

Parcel Numbers 07872-003-001, 07872-014-002, 07872-014-003, and 07872-009-000

Legend

- Proposed Annexation Areas
- Gainesville City Limits
- Gravity Main
- Force Main
- Lift Station
- Manhole



D:\Projects\GIS\Projects\Proposed Annexation\07872-003-001-002-003-009-000\Map\07872-003-001-002-003-009-000.mxd

Gain Develop Industrial, LLC and City of Gainesville

