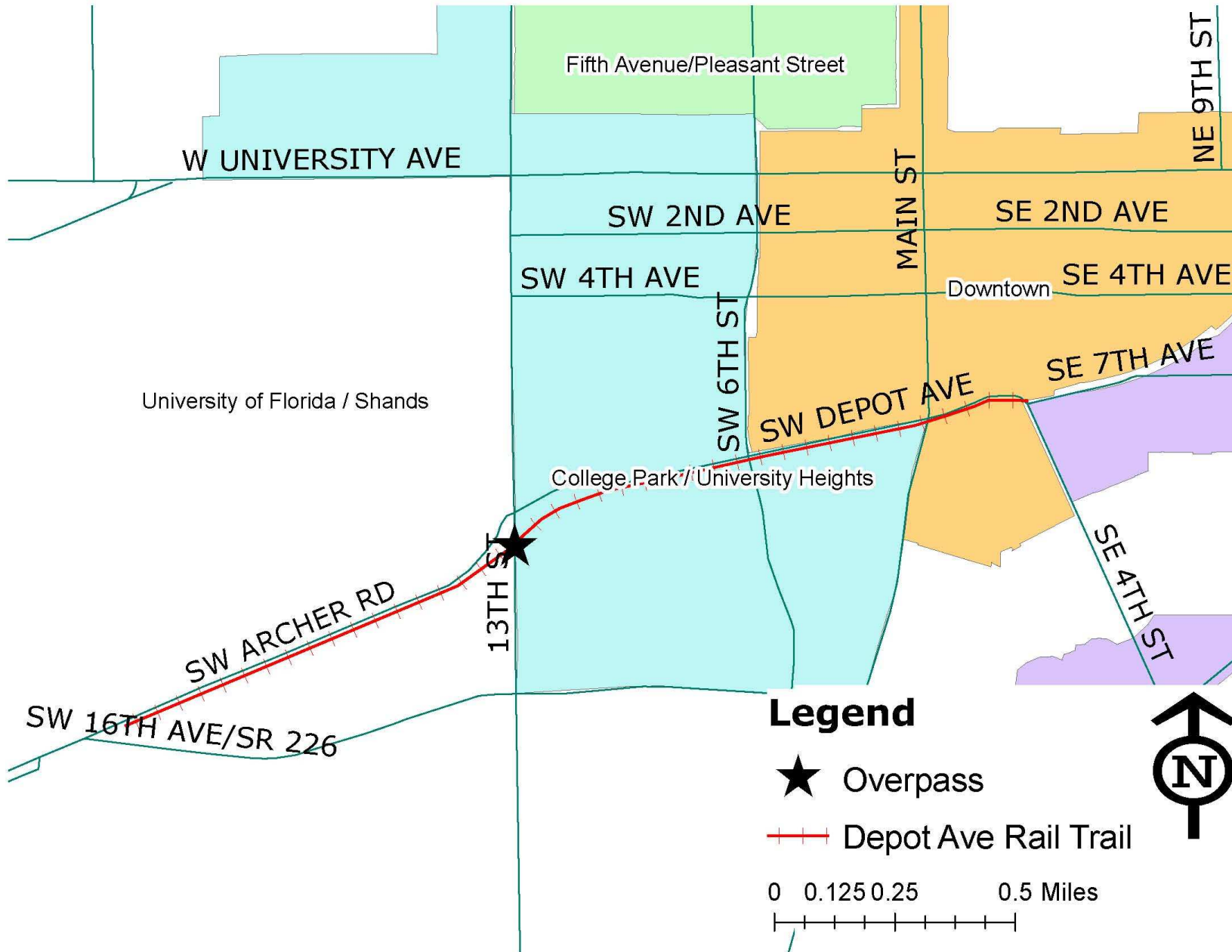

SW 13th Street Pedestrian Overpass Design Competition/RFQ

September 15, 2008

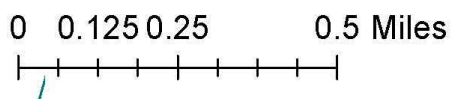


Project Location



Legend

- ★ Overpass
- +— Depot Ave Rail Trail



SW 13th Street Pedestrian Overpass



SW 13th Street Overpass – Gateway into College Park / University Heights



SW 13th Street Pedestrian Overpass

- **Owner:** State Highway Agency
- **Year Built:** 1957
- **Structure condition:** Good/Fair
- **Formerly a CSX railroad bridge, converted to pedestrian overpass in 1989**
- **Component of Depot Ave Rail-Trail**
- **FDOT cage structure installed to protect safety of pedestrians and motorists**
- **FORM: Undesirable aesthetics for redevelopment area**
- **FUNCTION: Difficult to access from SW 13th Street**



SW 13th Street Overpass - User experience



Project Context Area

- **University of Florida**
- **Shands Hospital**
- **College Park / University Heights**
- **Recent large-scale investments that connect to Rail-Trail**
 - **Shands Expansions**
 - **Campus View Condominiums/Apartments**
 - **Wildflower Apartments**



Redevelopment Goals for College Park / University Heights

- **Listed as ‘Cornerstone Project’**
- **Major gateway into and out of CPUH area**
- **Potential to provide a significant bicycle and pedestrian link to surrounding facilities**
- **Ranked highly in recent CPUH strategic planning sessions**
- **Meets several redevelopment goals**
 - **Urban Form**
 - **Traffic Circulation**
 - **Land Acquisition and Redevelopment**
 - **Public Space Initiatives**



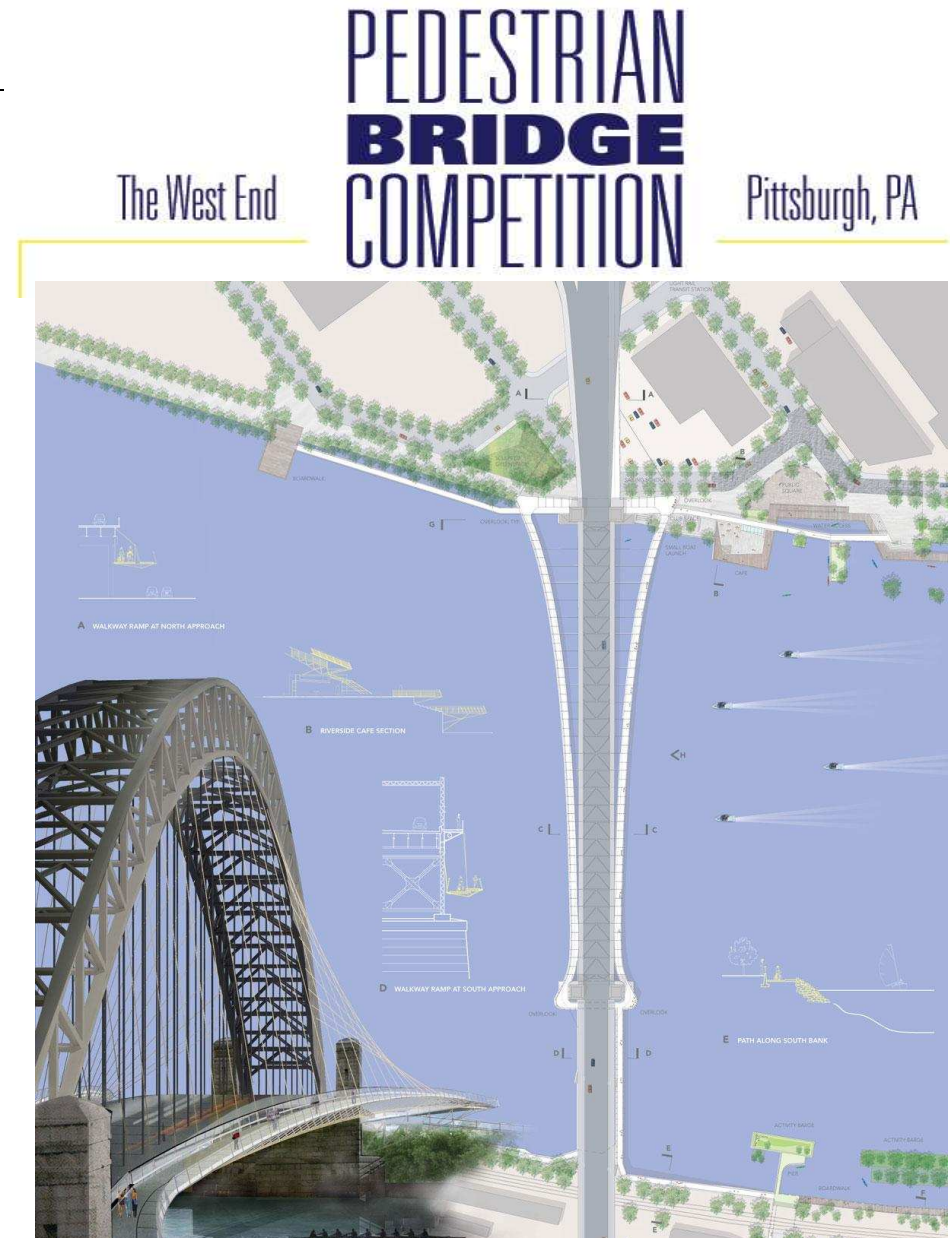
Gainesville Community Redevelopment Agency
COMMUNITY REDEVELOPMENT PLAN

College Park/University Heights Community Redevelopment Area

Adopted November 28, 2005

Project History

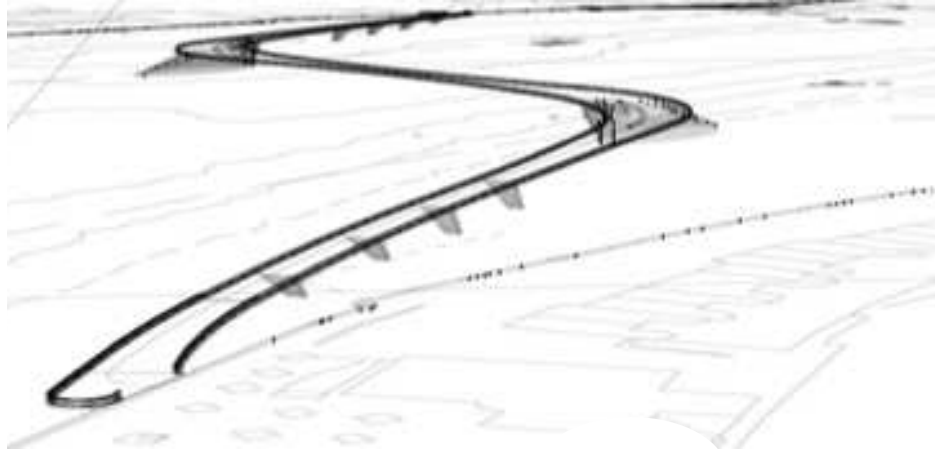
- **August 2007 CRA Presentation**
 - **West End Pedestrian Bridge Design Competition**
 - **Hybrid design competition/RFQ**
 - **Redevelop one of Pittsburgh's river front bridges**
 - **Solicit design concepts/qualified firms**
 - **Over 80+ design concept entries**
- **CRA Board authorize staff to initiate similar process**



**Competition Winner:
Endres Ware, Berkeley CA**

SW 13th Street Pedestrian Overpass Design Competition

Competition Goals



- Realign **FORM** and **FUNCTION** of overpass with CPUH redevelopment goals
 - Enhance aesthetics of overpass by re-designing pedestrian enclosure
 - Re-design access to overpass so direct connection is possible



Competition Objectives

- Solicit a high number of visionary and feasible proposals from qualified design firms
- Total Budget = \$1.5 M
- Construction by summer 2010
- CRA marketing

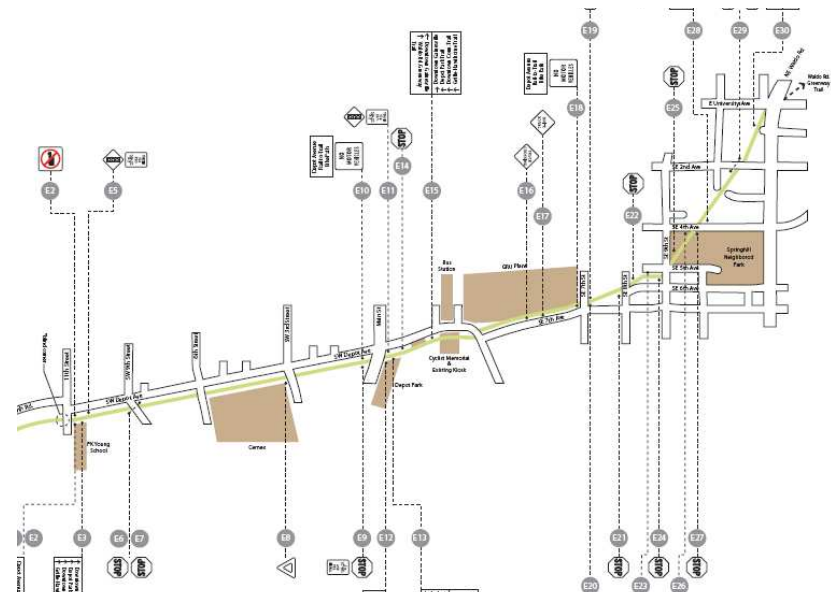


Linking with other Redevelopment Projects in Area

- Depot Ave Rail-Trail Improvements
 - Underground utilities (CRA - done)
 - Stabilize banks along trail (GRU)
 - Add Rail-Trail lighting (CRA)
 - Widen portion of trail connecting to overpass (CRA)
- Rail-Trail Wayfinding and Signage
 - Design universal Rail-Trail sign (CRA - done)
 - Provide wayfinding signage for Rail-Trails (CRA)
- SW 13th Street Improvements
 - Medians (CRA)
 - Streetscaping (CRA/Shands)
 - Lighting (CRA/Shands)
- SW 16th Ave/Archer Rd Project
 - Re-direct traffic, more pedestrian friendly (PWD/UF)



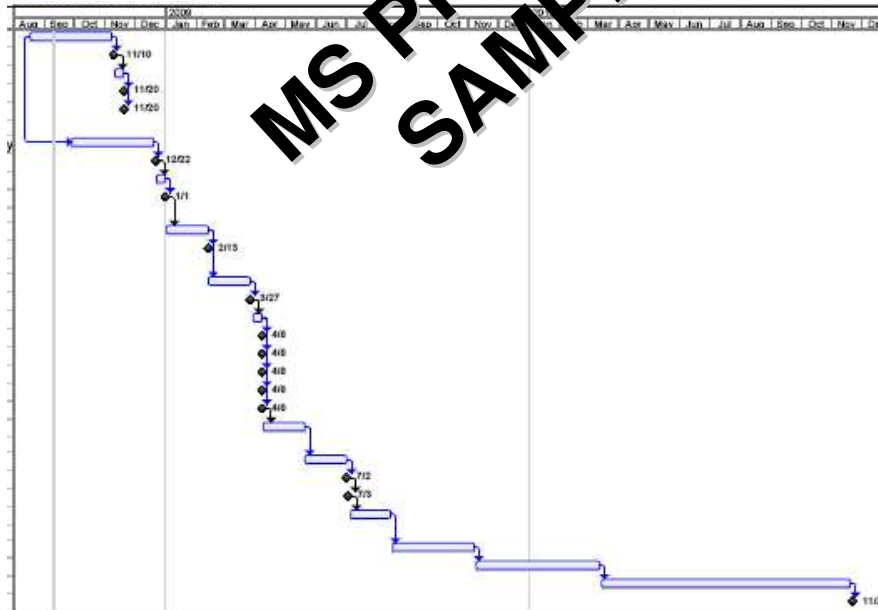
Eye4 Design – Depot Ave Rail-Trail



Glattig Jackson – Depot Ave Rail-Trail User Guide System

Project Schedule – High Level

ID	Task Name	Duration	Start	Finish	Predecessors
1	Competition Stage I - Concept Generation	80 days?	Mon 8/18/08	Fri 11/7/08	
2	Design Concepts	1 day?	Mon 11/10/08	Mon 11/10/08	1
3	Selection Committee 1	7 days?	Tue 11/11/08	Wed 11/19/08	2
4	3 Maximum \$1,000 awards	1 day?	Thu 11/20/08	Thu 11/20/08	3
5	3 Maximum Design Schemes	1 day?	Thu 11/20/08	Thu 11/20/08	3
7	RFQ - Design Professionals	80 days?	Mon 9/29/08	Fri 12/19/08	1SS+30 day
8	Design Teams	1 day?	Mon 12/22/08	Mon 12/22/08	7
9	Selection Committee 2 - written qualifications based selection	7 days?	Tue 12/23/08	Wed 12/31/08	8
10	3 Maximum Design Teams	1 day?	Thu 1/1/09	Thu 1/1/09	9
12	Execute Professional Services Contract	30 days?	Fri 1/2/09	Thu 2/12/09	10
13	3 Maximum \$4,000 Stipend	1 day?	Fri 2/13/09	Fri 2/13/09	12
15	Competition Stage II - Concept Proposal	30 days?	Fri 2/13/09	Thu 3/26/09	12
16	3 Maximum Design Schemes	1 day?	Fri 3/27/09	Fri 3/27/09	15
17	Selection Committee 2 - Proposal Based Selection	7 days?	Mon 3/30/09	Tue 4/7/09	16
18	1 \$4,000 Award	1 day?	Wed 4/8/09	Wed 4/8/09	17
19	1 \$3,000 Award	1 day?	Wed 4/8/09	Wed 4/8/09	17
20	1 \$2,500 Award	1 day?	Wed 4/8/09	Wed 4/8/09	17
21	3 Design Proposals	1 day?	Wed 4/8/09	Wed 4/8/09	17
22	1 Qualified Design Team	1 day?	Wed 4/8/09	Wed 4/8/09	17
23	Contract Execution	30 days?	Thu 4/9/09	Wed 5/20/09	22
25	RFP Construction Management At-Risk	30 days?	Thu 7/1/09	Wed 7/1/09	23
26	Selection Committee - Design Team members	1 day?	Thu 7/2/09	Thu 7/2/09	25
27	Construction Team	1 day?	Fri 7/3/09	Fri 7/3/09	26
28	Contract Execution	30 days?	Mon 7/6/09	Fri 8/14/09	27
29	Develop 100% Plans	30 days?	Mon 8/3/09	Fri 11/6/09	28
30	Permitting	30 days?	Mon 8/3/09	Fri 3/12/10	30
31	Construction	30 days?	Mon 3/1/10	Fri 11/19/10	31
32	Project Complete	1 day?	Mon 11/22/10	Mon 11/22/10	32



Fall 2008

- Competition/RFQ draft review
- Prepare marketing materials
- Launch competition

Winter 2008/2009

- Manage competition

Spring 2009

- Receive final design proposals, select winner
- Contract negotiations for final design

Summer 2009

- Final construction document design review
- Prepare RFQ for Construction Management

Fall/Winter 2009

- Select Contractor
- Apply for permitting

Spring/Summer 2010

- Begin Construction



Recommendations

- Provide input as necessary

