

Residential Water Consumption

Pierce Jones, PhD

PREC/IFAS/UF

Goal D

Water

Address long-term needs for water supply, water quality and water conservation



- Identify and protect water recharge areas
- **Develop communities that optimize water conservation and achieve a 50 percent or greater reduction in water usage based on current usage**
- Apply Florida-friendly guidelines for landscaping
- Demonstrate leadership in resource management by promoting and adopting innovative ways to meet water needs
- Capture, treat and reuse storm water to the maximum extent feasible



Residential Water Consumption Baselines Alachua County, FL

Dwelling Units in Sample - 5,180 :

- All units constructed since 2000
- Single-family detached in 28 neighborhoods - 3,035
- Apartments in 10 complexes - 1,420
- Condominiums in 18 associations - 735

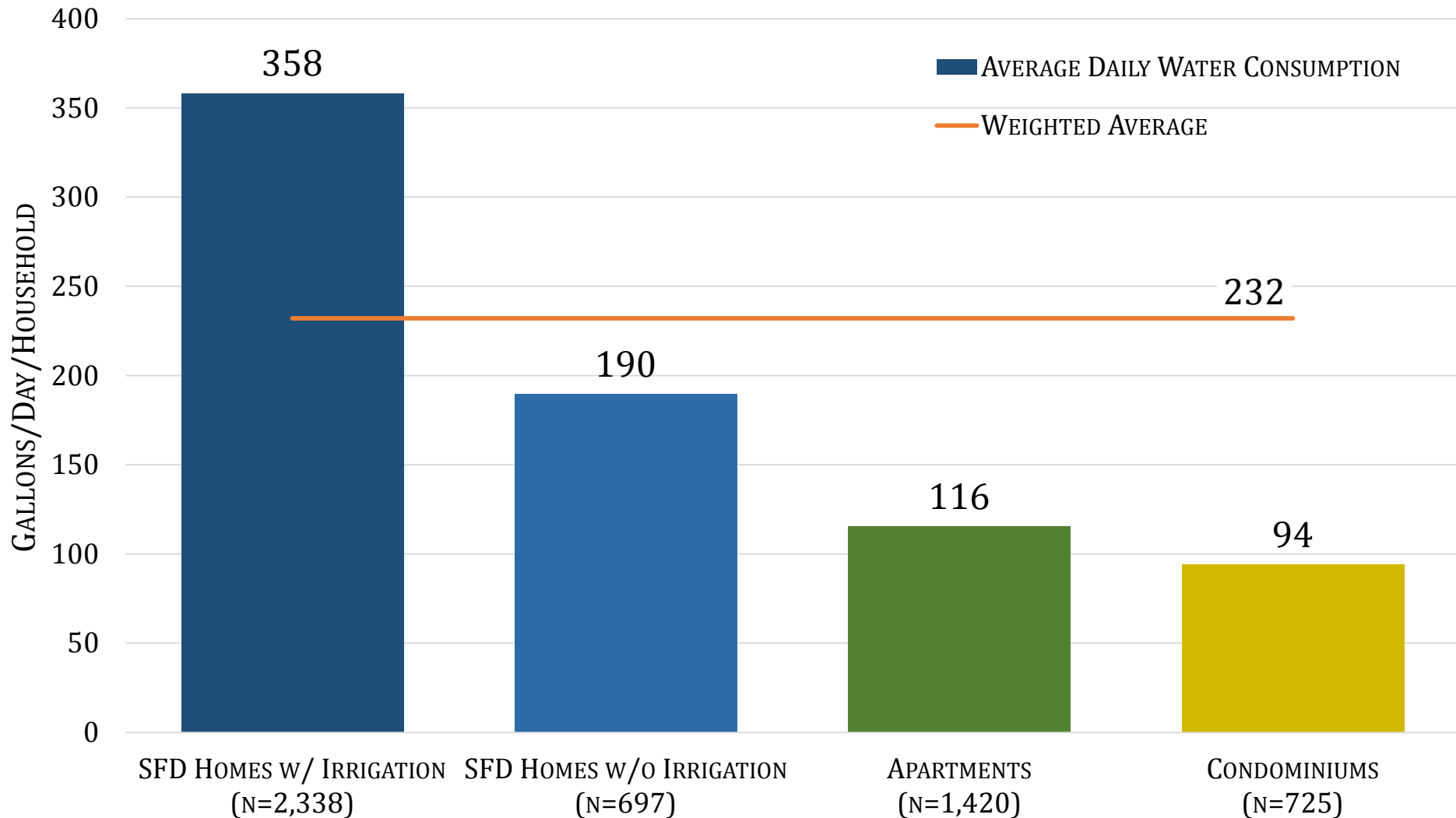
Baseline Metrics:

- Metered water use in years 2009, 2010 and 2013
- Average gallons per day (gpd) per household

Residential Water Consumption Baselines

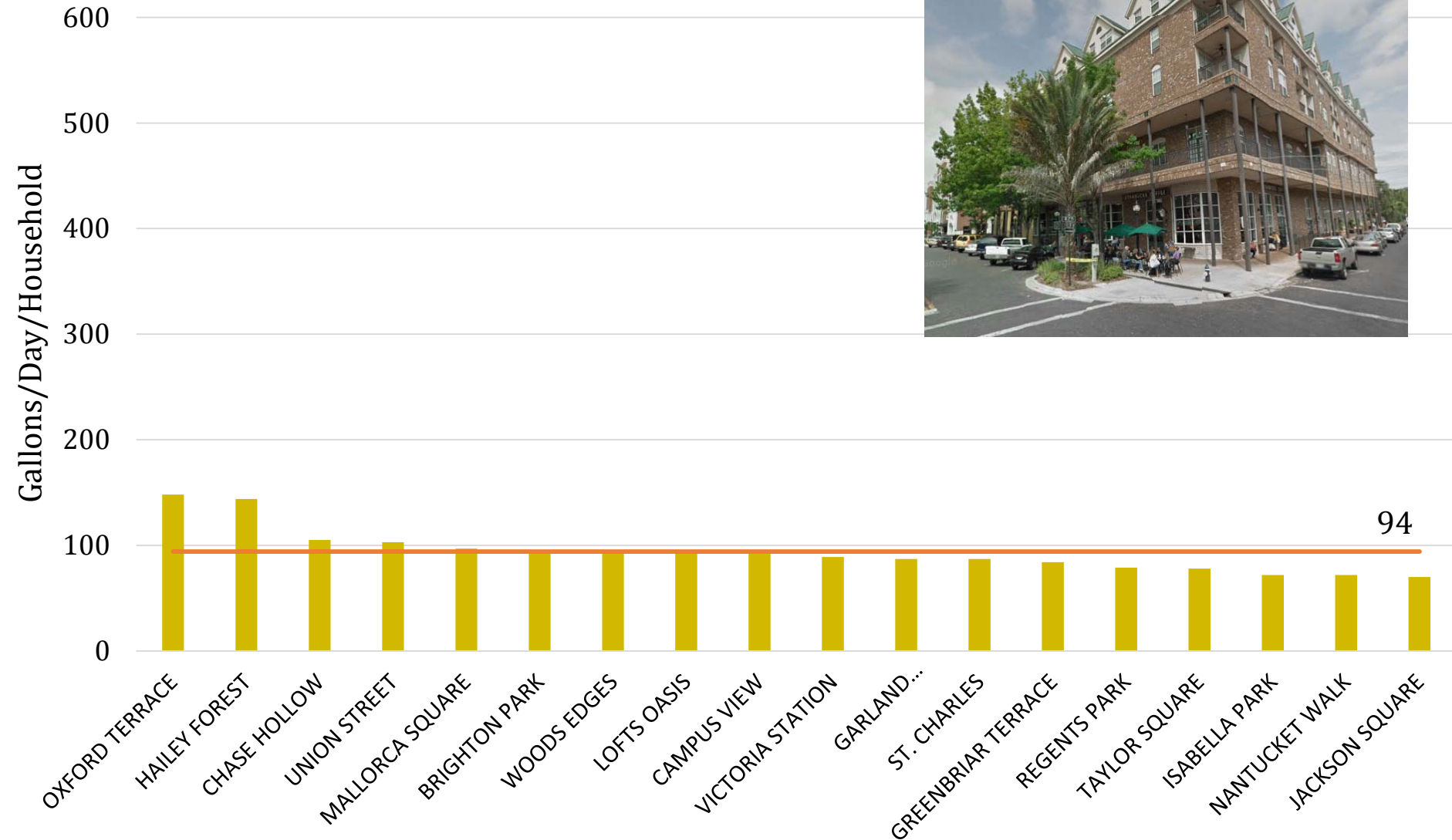
Dwelling Unit Types Comparison

Item #170321A



Residential Water Consumption Baselines

Condominiums (735)

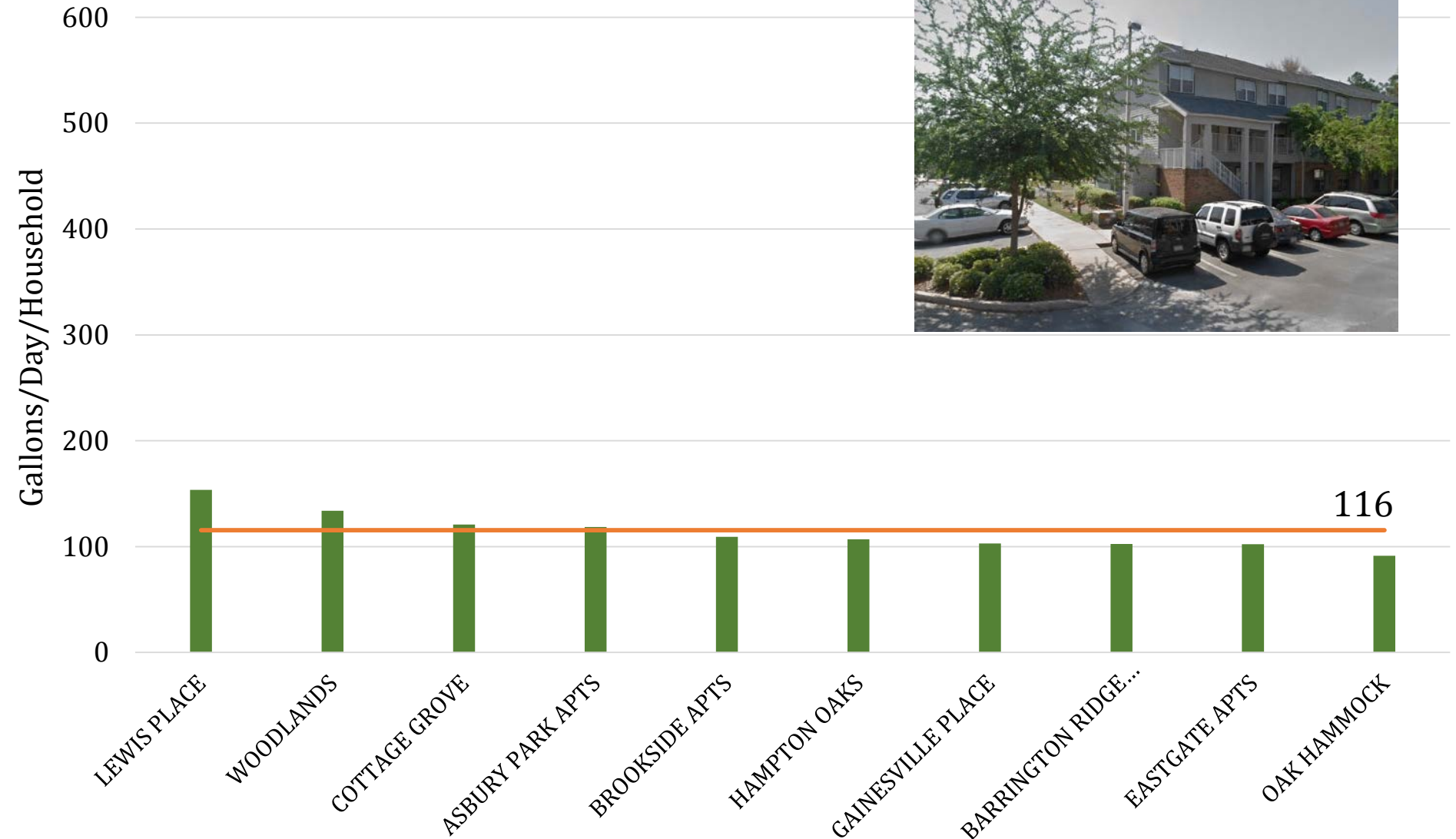


94

Residential Water Consumption Baselines

Apartments (1,420)

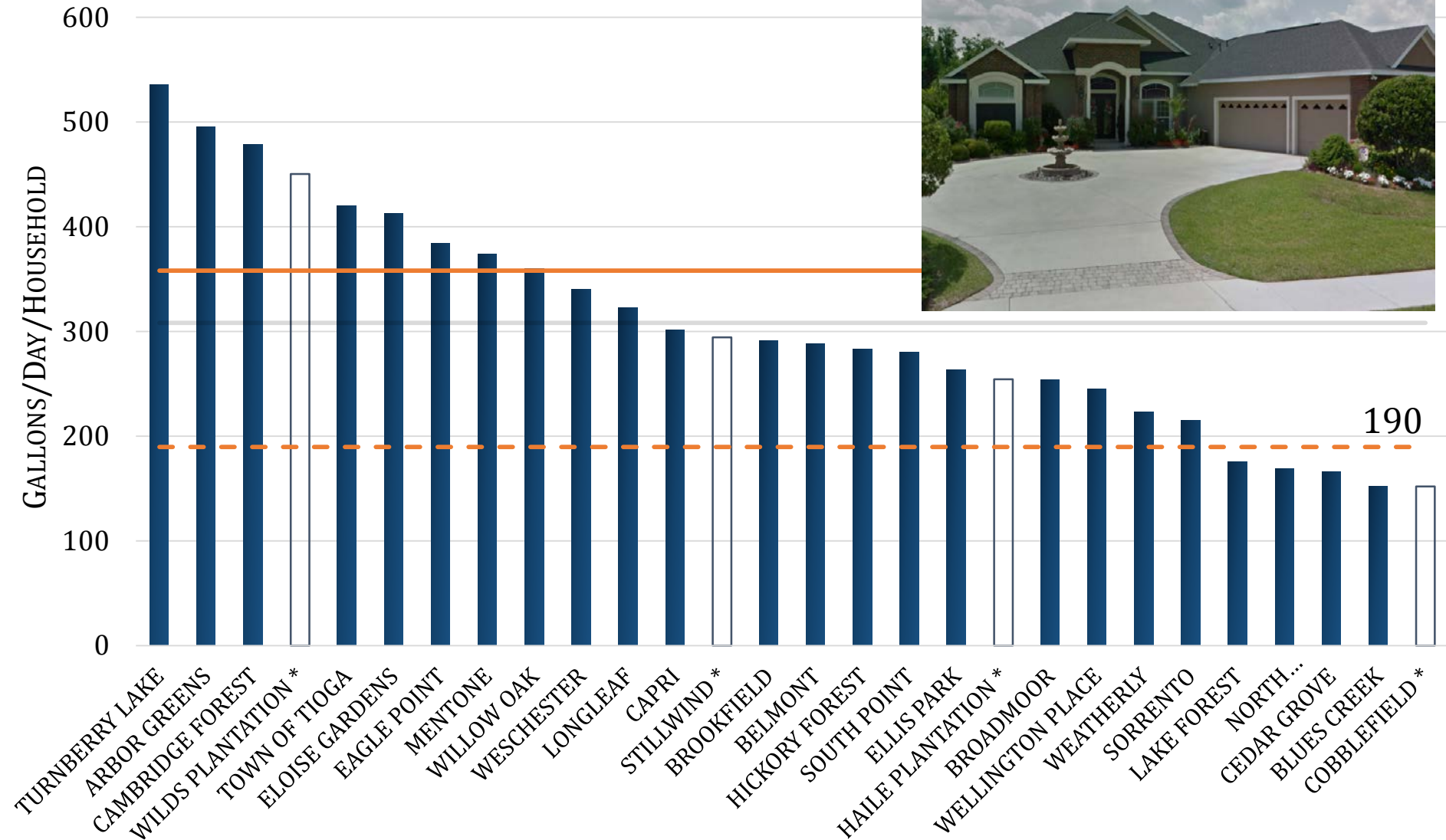
Item #170321A



Residential Water Consumption Baselines

Item #170321A

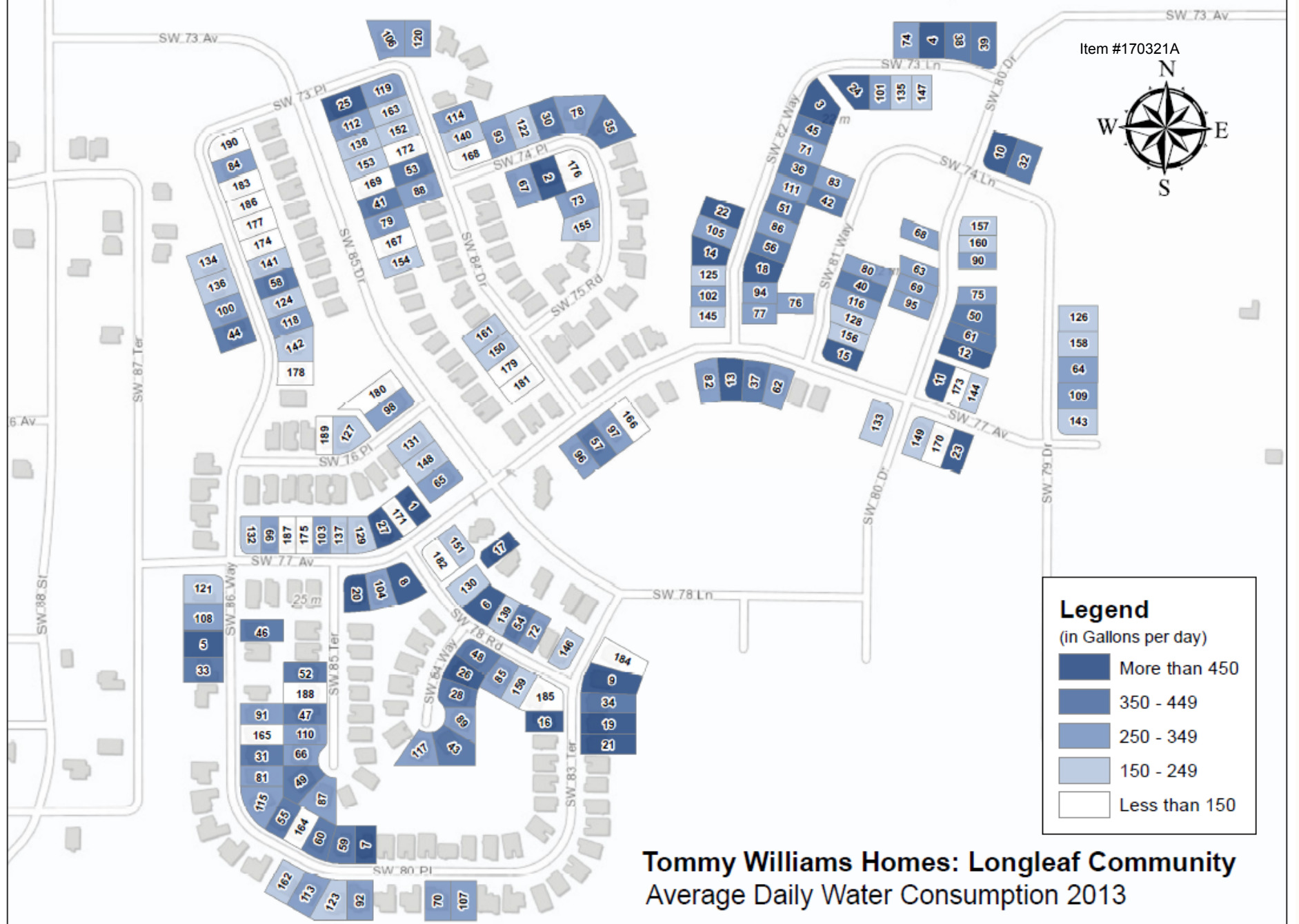
Single Family Detached (3,035)





Geovisualization: Residential Subdivisions

Item #170321A



Legend
(in Gallons per day)

- More than 450
- 350 - 449
- 250 - 349
- 150 - 249
- Less than 150

Tommy Williams Homes: Longleaf Community Average Daily Water Consumption 2013

Sources: Esri, HERE, DeLorme, TomTom, Intermap, increment P Corp., GEBCO, USGS, FAO, NPS, NRCAN, GeoBase, IGN, Kadaster NL, Ordnance Survey, Esri Japan, METI, Esri China (Hong Kong), swisstopo, MapmyIndia, © OpenStreetMap contributors, and the GIS User Community

0 0.0225 0.045 0.09 0.135 0.18 Miles

23 m



Residential metrics (2016)

Area	Subdivisions	Parcels
1,148 sq. miles	1,054	150,734
Potable meters	Reclaimed meters	Irrigation meters
150,734	28,306	28,316

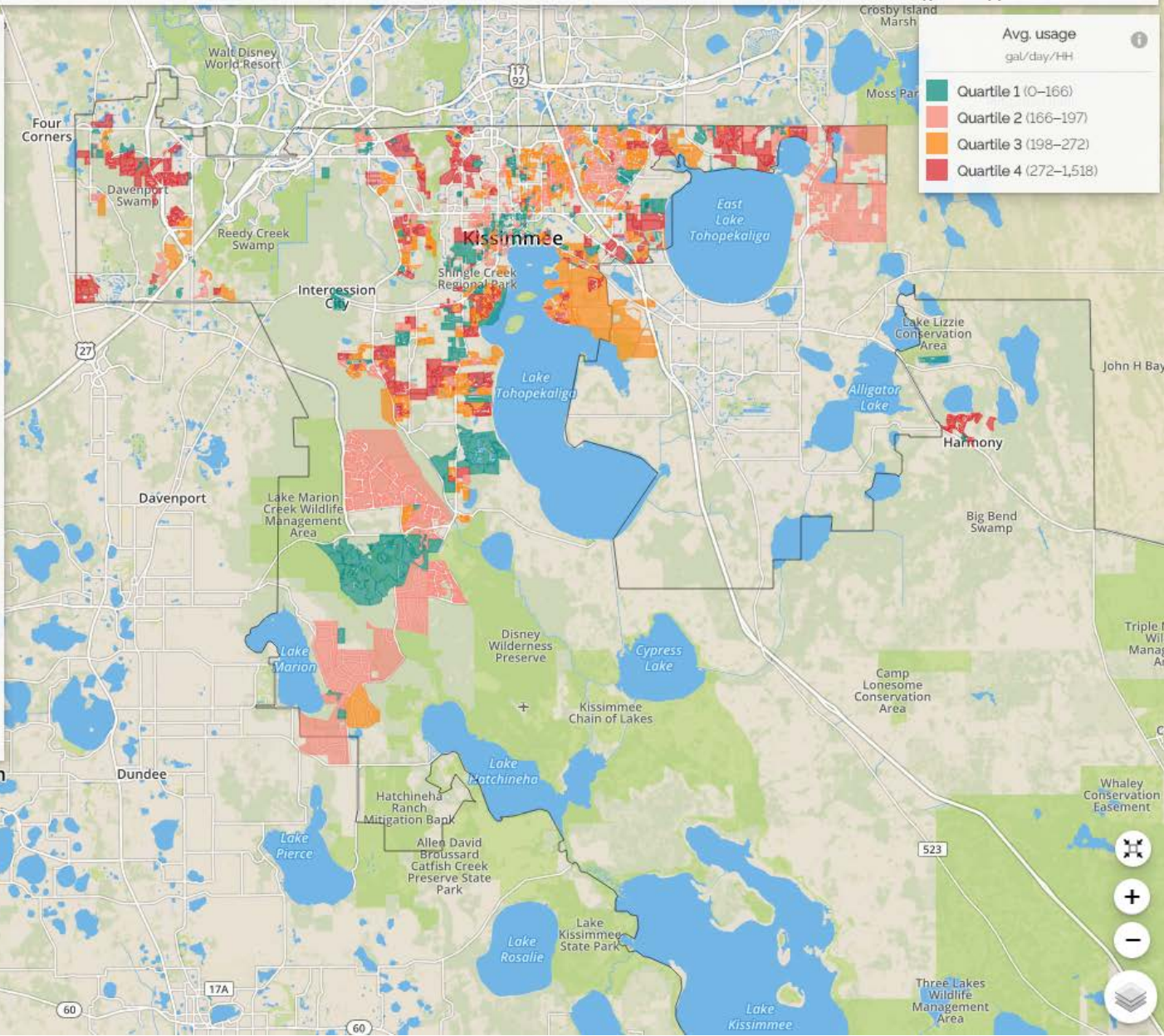
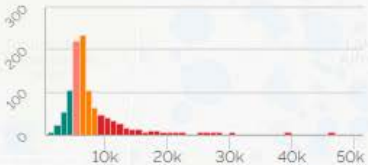
Water usage (2016)



Avg. total usage
201
gal/day/HH

■ Potable
 ■ Reclaimed
 ■ Irrigation

Subdivisions distribution (2016)



Avg. usage
gal/day/HH

- Quartile 1 (0-166)
- Quartile 2 (166-197)
- Quartile 3 (198-272)
- Quartile 4 (272-1,518)



Florida Water Star: Savings?



Which conservation program?

All programs

Watering Citations

Irrigation Workshop

Irrigation Evaluation

Rain Sensor Giveaways

Fixture Giveaways

Toilet Rebates

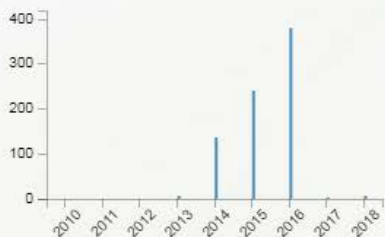
Inside Audits

Florida Water Star - Master Maintained

Florida Water Star - Owner Maintained

Clear

How many participants each year?



Clear

How well did the program

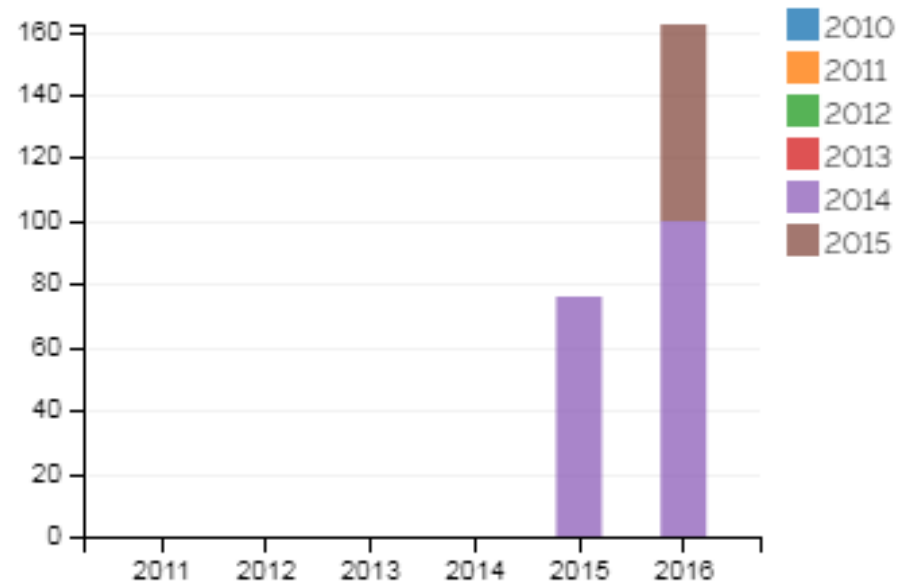


Savings - Florida Water Star - Owner Maintained

Average (gal/day/household)

Cumulative (Mgal)

This chart displays **average daily water savings**, in gallons per household per day, for each program group in each year following participation. Savings were calculated for single-family, detached homes that were occupied for the full year before participation and for the full year of analysis.



Oakmont

Item #170321A

