

ID# 200475A

City of  
**Gainesville**

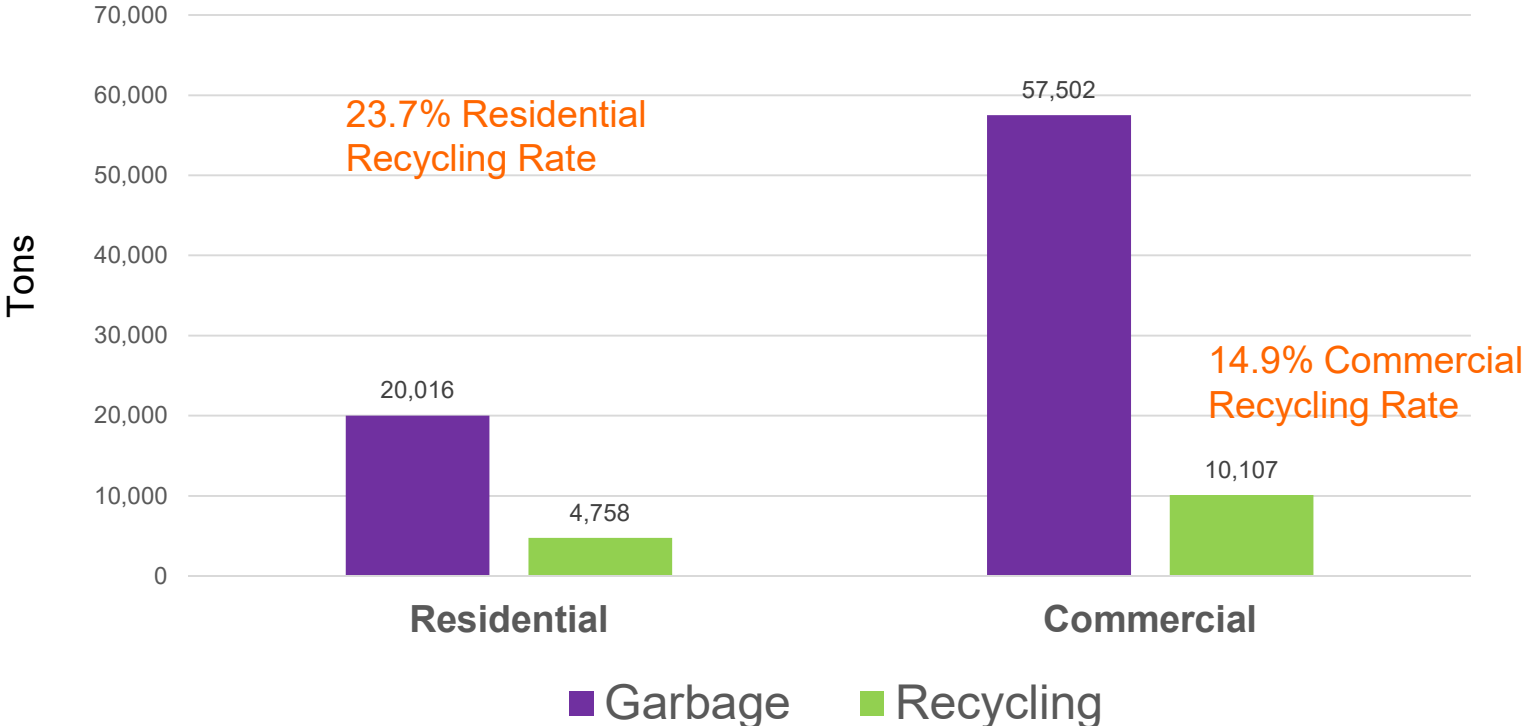
Tom Strickland  
Recycling Coordinator  
Public Works Department

Zero Waste Subcommittee  
Commercial and Multi-Family Property Recycling  
November 10, 2020

# Commercial Waste Stream

- Material (garbage, recyclables, compostables, scrap metal, construction waste) generated by:
  - **Businesses** (e.g., offices, retail stores, restaurants)
  - **Industries** (e.g., farms, factories, transportation)
  - **Institutions** (e.g., schools, universities, jails)
  - **Governments** (e.g., city buildings, parks, libraries)
  - **Multi-Family Properties** (e.g., apartments, condominiums, townhouses)
- Includes material generated from construction and non-construction activities.
- This waste material is primarily collected in dumpsters, compactors, commercial carts, and/or roll-off containers. A small percentage of commercial waste material is self-hauled by businesses.

### Tons of Material Collected by Waste Stream Type in the City of Gainesville (2019)



Notes: 1) Excluded yard waste from residential data for more equitable comparison; and 2) Data does not include C&D waste

# Mandatory Commercial Recycling Ordinance

(Chapter 27, Article III,  
Division 3, Section 85-85).

Effective Date: January 1, 1997

All **commercial generators** shall separate designated recycling materials and make them available for recycling. Commercial generators failing to separate the designated recyclable materials, **except for de minimus amounts**, will be subject to a civil citation.

**Commercially-collected residential.** All commercially-collected residential units shall establish a recycling program that includes recycling of all designated recyclable materials and is convenient and accessible to the residents.

# Designated Recyclable Materials



Any business generating 15% or more by volume of the **designated recyclable materials** in their waste stream are required to separate and recycle these materials.

## PAPERS

- Corrugated Cardboard & Pasteboard
- Newspaper, Magazines, Catalogs, Manuals, Paper Bags, Phone Books, & Paperback Books
- Office Paper (including shredded paper) & Junk Mail

## CONTAINERS

- Metal Cans (steel and aluminum)
- Glass Bottles & Jars
- Plastic Bottles, Jugs, Jars & Tubs

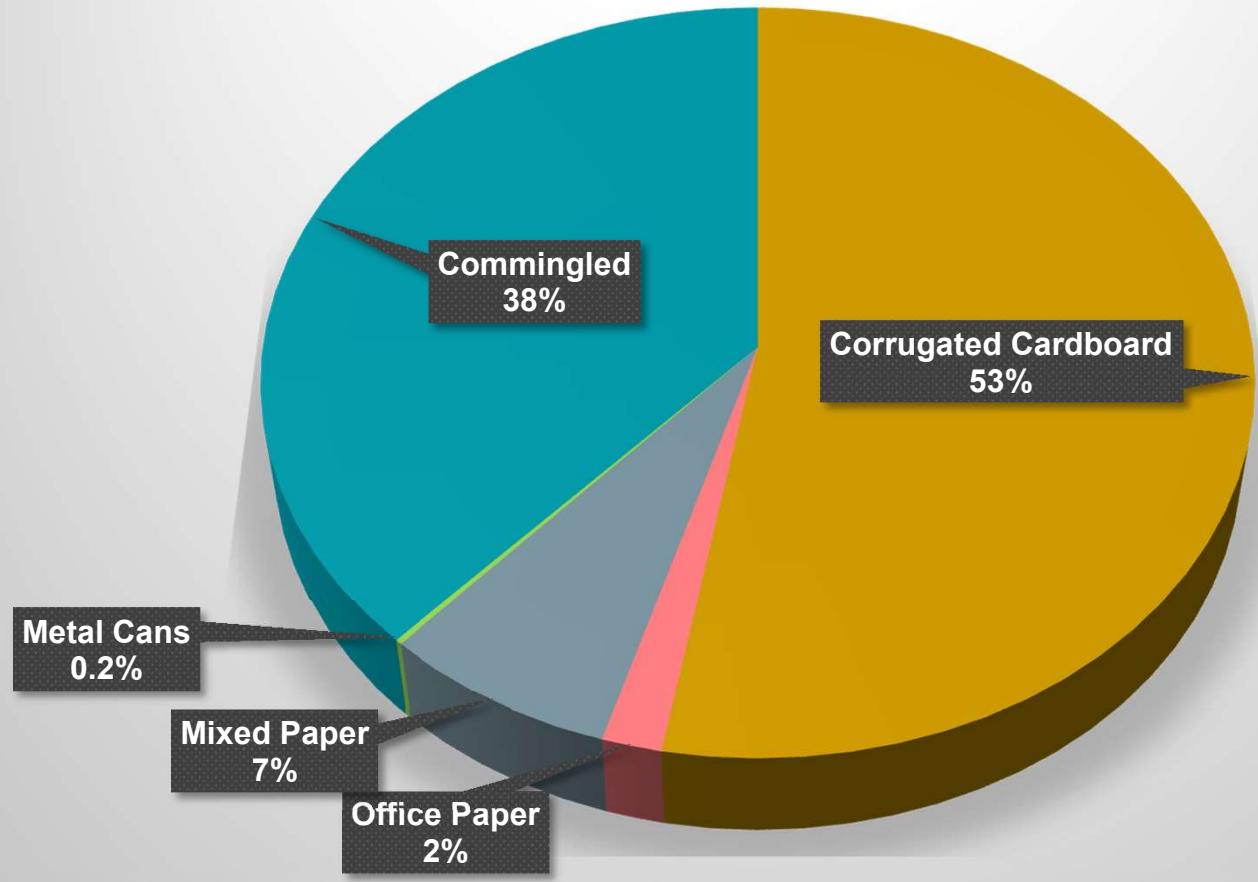
# Work in Progress Under Existing Policy

- **Capturing MFPs service info** (service provider, dumpster size, recycling containers, frequency of service)
  - 96% completed based on the total number of units
  - 70% completed based on the total number of properties
- **Working with service providers to better label recycle containers at MFPs** (large-sized “Recycle Here” decals and a decal listing Accepted/Non-Accepted Items)
- **Capturing non-MFP service info** (offices, retail stores, restaurants, hotels, etc.)
- **Inspections & Technical Assistance** (Solid Waste Inspectors & Recycling Coordinator)
- **Education** (primarily web-based)

# Where Does the Commercial Waste Go?

Service Provider (Hauler)	Garbage	Recyclables
WCA	Alachua County Transfer Station	Alachua County Materials Recycling Facility (MRF)
Waste Pro	Alachua County Transfer Station	Alachua County Materials Recycling Facility (MRF)
Florida Express Environment	Alachua County Materials Recycling Facility (MRF)	Single-stream materials go to Fla. Express's own Southside MRF in Ocala
Republic	Alachua County Materials Recycling Facility (MRF)	Single-stream materials go to Recycling Services of America in Gainesville
WestRock Company	n/a	Baled Cardboard from retail stores goes to Jacksonville Recycling Facility

# Commercial Recyclable Materials Collected, Oct. 2019 - Sept. 2020

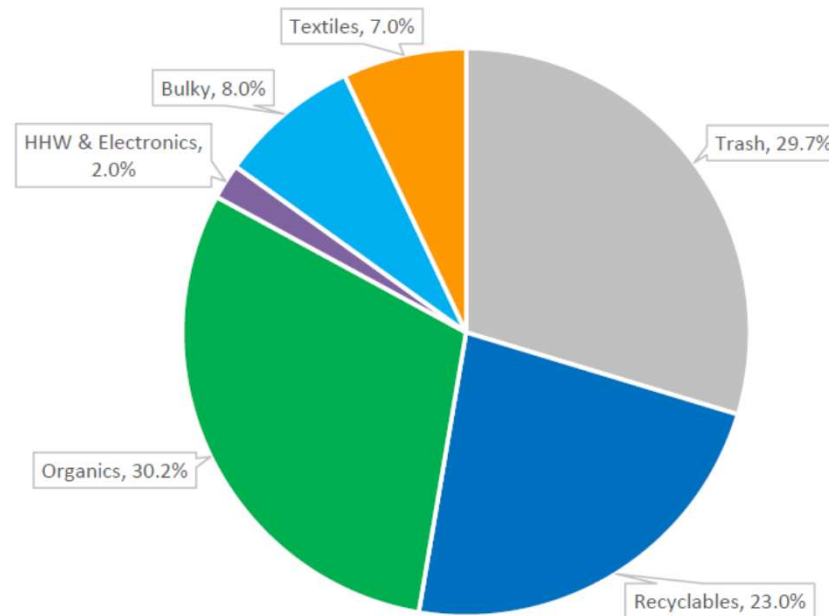




# Recycling at Multi-Family Properties

- Waste stream at Multi-Family Properties more similar to Single-Family Homes than other commercial generators.

Composition of MSW from MFPs in Hennepin County, MN



Source: Multifamily Waste Study Hennepin County, Minnesota (September 2017)

# State of MFP Recycling in Gainesville

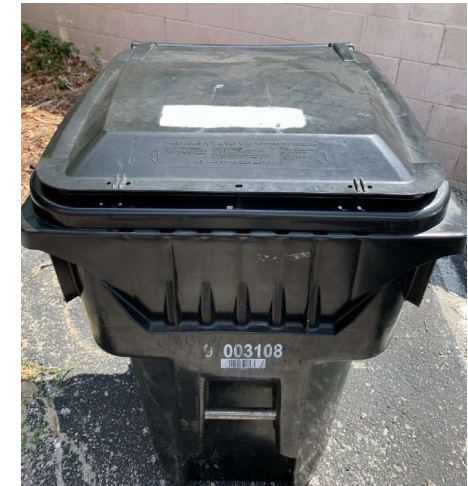


## Gainesville's MFP Recycling Rate?

- 341+ Multi-Family Properties (MFPs) & 30,000+ units
- Compliance Rate with MCRO is at about 95%
- Most properties are under-serviced for recycling and many others only have "token" recycling participation
- The verage available recycle capacity at MFPs is 9.3% of the available trash capacity
- Unable to separate tonnages from combined commercial collection data

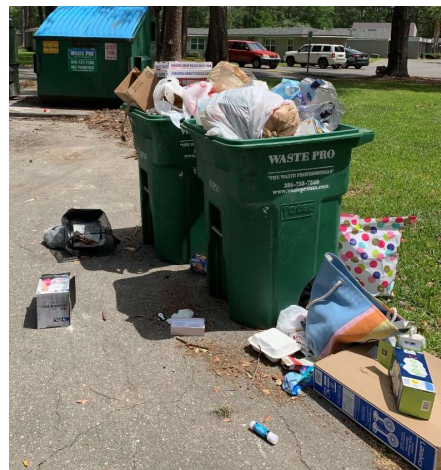
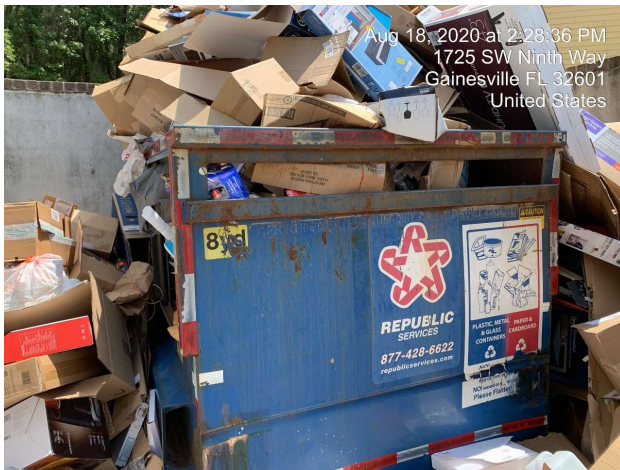
# Challenges at MFPs

1. **Education & Outreach:** Current collection programs are inconsistent and confusing, which leads to low recycling participation and high levels of recycling contamination.
  - Limited access to recycling collection containers
  - Poorly labeled & hard to identify recycling collection containers
  - Little or no information shared with tenants on recycling availability or what items are accepted/not accepted



# Challenges at MFPs

2. **Adequate Levels of Service:** Lack of services leads to low recycling participation, increased contamination & litter.
  - Full and overflowing recycling collection containers
  - Many properties not designed with adequate space for additional containers
  - Large volumes of cardboard during move-out/move-in periods



# Challenges at MFPs



3. **High Turnover Rate:** Make it difficult to establish consistency in programs.
  - Resident/tenant turnover rate
  - Property management turnover rate
  - Changes in service provider and/or collection containers
  
4. **Wide Range of Services & Service Costs:** Confusing pricing and contracts can make it difficult for property managers to determine what levels of services are appropriate.
  - Dual-stream and single-stream collections
  - Mix of dumpsters, carts, compactors and roll-offs
  - Pricing might be based on the frequency, number of containers or size of containers
  - Wild-Wild-West!

# Positive Examples at MFPs



# Policy / Ordinance Changes to Consider



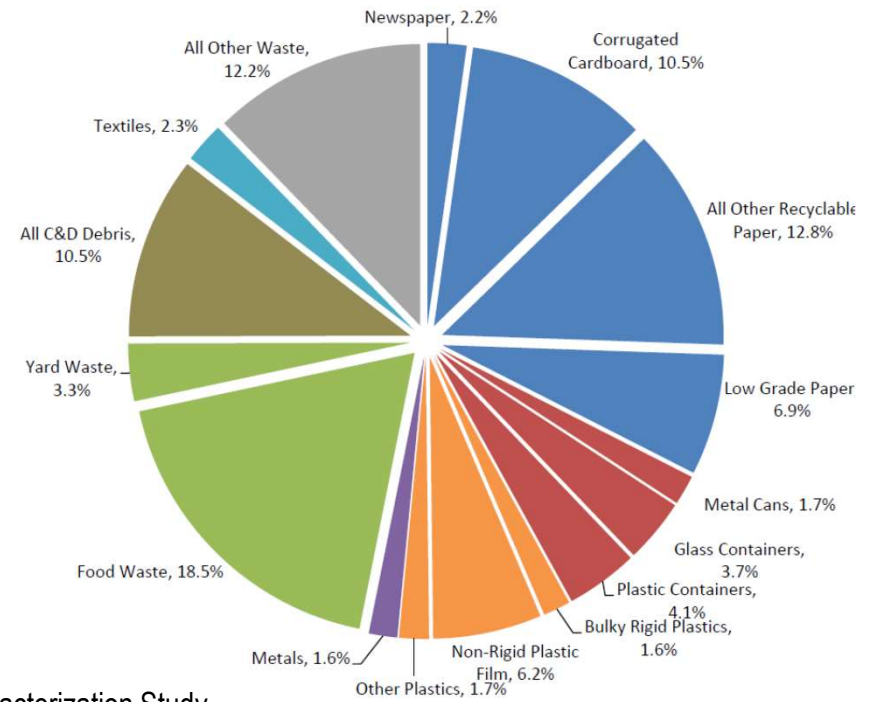
- A. Base service volume for garbage & recycling on the total number of units at MFPs
- More equitable pricing structure
  - Ensures adequate levels of service
  - Increases recycling access and participation
- B. Set standard colors for collection containers
- For example: tan for garbage, blue for recycling, green for food waste/yard waste (No longer use black carts for recycling collection)
  - Opportunity to provide clear messaging for coordinated city-wide educational campaigns
  - Decrease in accidental contamination of recycling

# Policy / Ordinance Changes to Consider

- Specific designated recyclable materials might be under 15%, but combined with other designated recyclables make up greater than 15%
- Opportunity exists to capture a significant greater quantity of highly recyclable materials from our waste stream

C. Adjust or Eliminate “15 percent by volume” de minimus policy from Mandatory Commercial Recycling Ordinance

Composition of Commercial Waste Disposed (% by weight)



Source: Pinellas County 2014 Waste Characterization Study



# Options to Consider to Increase Diversion



## D. Reminder: Benefits of an Exclusive Solid Waste Franchise

- **Uniform Containers & Messaging** (e.g., labeling and color of containers)
- **Even and consistent pricing for customers**
- Enhanced **Formal Partnership** between City, Hauler, and Properties
- The City would have **greater input** on the type of recycle programs, location & type of service containers, number of service locations, and education
- **Reduce truck traffic and emissions** through greater collection efficiencies
- **Better management and increased reuse of Bulk Items at MFPs**
- Increased recycling collected from small quantity generators (small & medium sized businesses)

**Thank You.**