

Design Development
Gainesville Police Department

Training Facilities

Gainesville, Florida

October 17, 2007



Architects Design Group, Inc.
Winter Park, Florida



GAINESVILLE PD HEAD QUARTERS



ADJACENT MULTI-FAMILY HOUSE



AERIAL SITE VIEW

PROPOSED SITE AREA

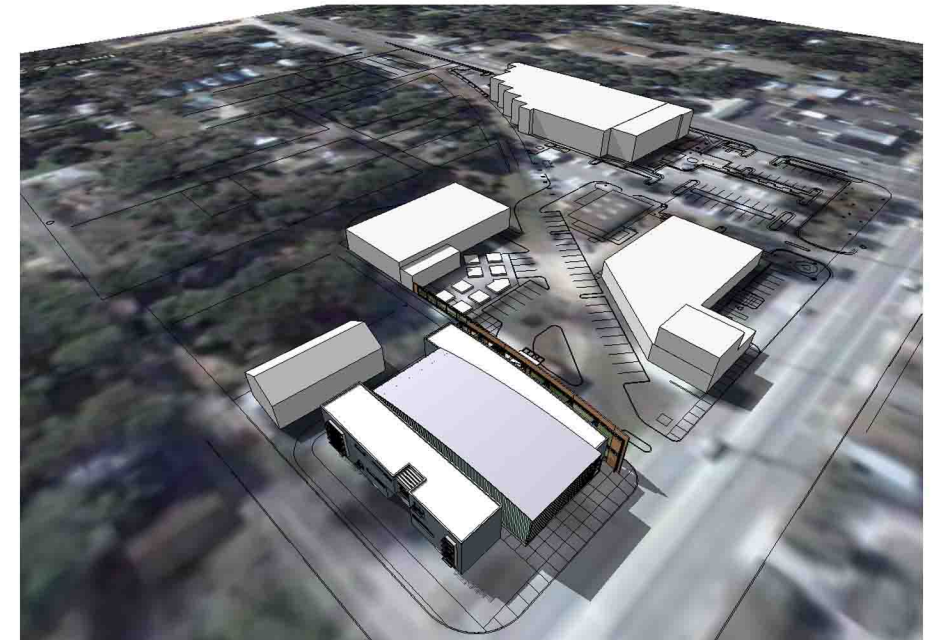
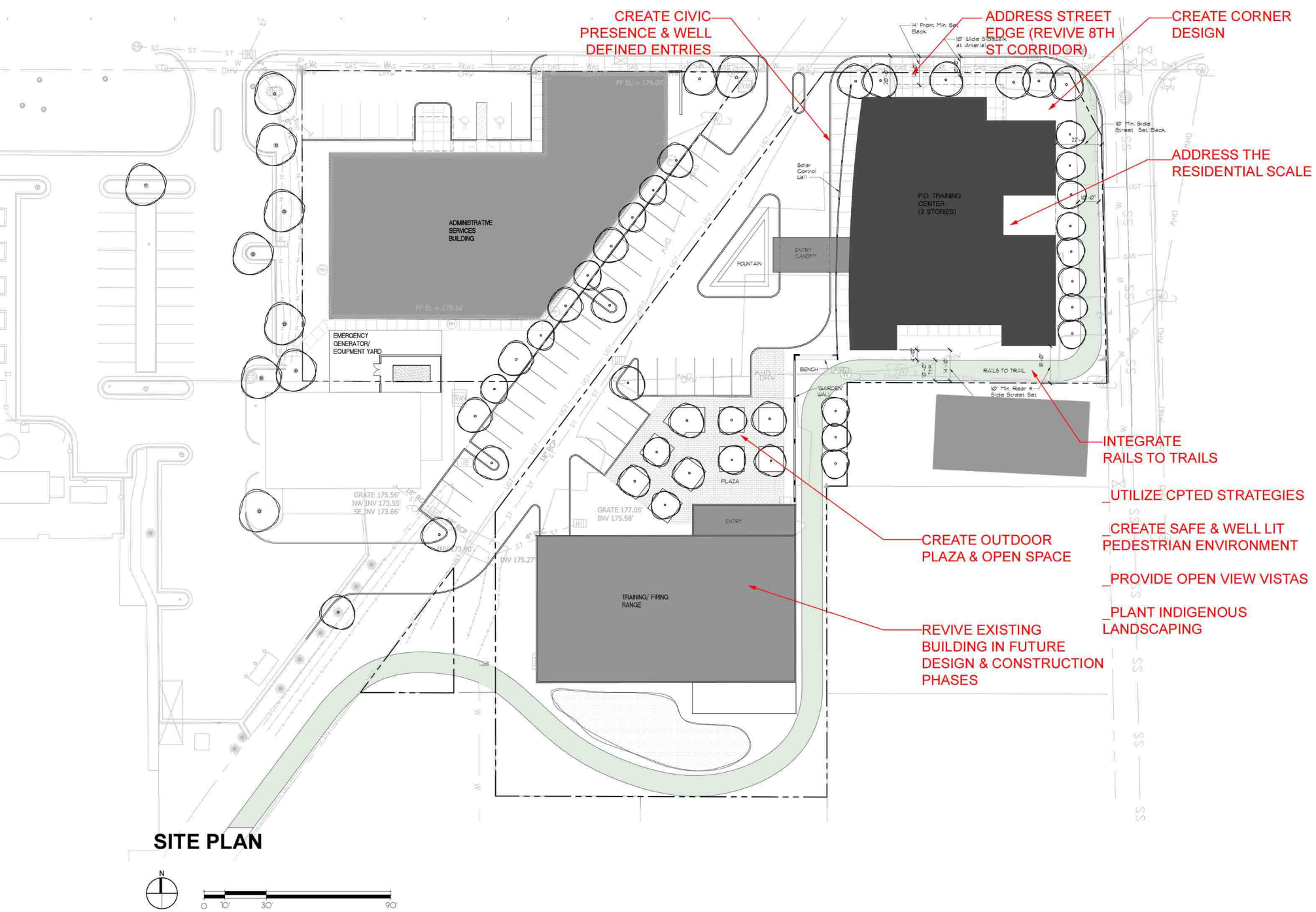
EXISTING GPD



EXISTING SITE



RENOVATED GAINESVILLE PD BUILDING





LEED-NC Version 2.2 Registered Project Checklist
 Gainesville Police Department Training Facility
 Gainesville, Florida 8.20.07

Sustainable Sites 14 Points

Y	Prereq 1	Construction Activity Pollution Prevention	Required
1	Credit 1	Site Selection	1
1	Credit 2	Development Density & Community Connectivity	1
1	Credit 3	Brownfield Redevelopment	1
1	Credit 4.1	Alternative Transportation, Public Transportation Access	1
1	Credit 4.2	Alternative Transportation, Bicycle Storage & Changing Rooms	1
1	Credit 4.3	Alternative Transportation, Low-Emitting and Fuel-Efficient Vehicles	1
1	Credit 4.4	Alternative Transportation, Parking Capacity	1
1	Credit 5.1	Site Development, Protect of Restore Habitat	1
1	Credit 5.2	Site Development, Maximize Open Space	1
1	Credit 6.1	Stormwater Design, Quantity Control	1
1	Credit 6.2	Stormwater Design, Quality Control	1
1	Credit 7.1	Heat Island Effect, Non-Roof	1
1	Credit 7.2	Heat Island Effect, Roof	1
1	Credit 8	Light Pollution Reduction	1

Water Efficiency 5 Points

1	Credit 1.1	Water Efficient Landscaping, Reduce by 50%	1
1	Credit 1.2	Water Efficient Landscaping, No Potable Use or No Irrigation	1
1	Credit 2	Innovative Wastewater Technologies	1
1	Credit 3.1	Water Use Reduction, 20% Reduction	1
1	Credit 3.2	Water Use Reduction, 30% Reduction	1

Energy & Atmosphere 17 Points

Y	Prereq 1	Fundamental Commissioning of the Building Energy Systems	Required
Y	Prereq 2	Minimum Energy Performance	Required
Y	Prereq 3	Fundamental Refrigerant Management	Required
4	Credit 1	Optimize Energy Performance	1 to 10
1	Credit 2	On-Site Renewable Energy	1 to 3
1	Credit 3	Enhanced Commissioning	1
1	Credit 4	Enhanced Refrigerant Management	1
1	Credit 5	Measurement & Verification	1
1	Credit 6	Green Power	1

Materials & Resources 13 Points

Y	Prereq 1	Storage & Collection of Recyclables	Required
1	Credit 1.1	Building Reuse, Maintain 75% of Existing Walls, Floors & Roof	1
1	Credit 1.2	Building Reuse, Maintain 100% of Existing Walls, Floors & Roof	1
1	Credit 1.3	Building Reuse, Maintain 50% of Interior Non-Structural Elements	1
1	Credit 2.1	Construction Waste Management, Divert 50% from Disposal	1
1	Credit 2.2	Construction Waste Management, Divert 75% from Disposal	1
1	Credit 3.1	Materials Reuse, 5%	1
1	Credit 3.2	Materials Reuse, 10%	1
1	Credit 4.1	Recycled Content, 10% (post-consumer + 1/2 pre-consumer)	1
1	Credit 4.2	Recycled Content, 20% (post-consumer + 1/2 pre-consumer)	1
1	Credit 5.1	Regional Materials, 10% Extracted, Processed & Manufactured Regi	1
1	Credit 5.2	Regional Materials, 20% Extracted, Processed & Manufactured Regi	1
1	Credit 6	Rapidly Renewable Materials	1
1	Credit 7	Certified Wood	1

Indoor Environmental Quality 15 Points

Y	Prereq 1	Minimum IAQ Performance	Required
Y	Prereq 2	Environmental Tobacco Smoke (ETS) Control	Required
1	Credit 1	Outdoor Air Delivery Monitoring	1
1	Credit 2	Increased Ventilation	1
1	Credit 3.1	Construction IAQ Management Plan, During Construction	1
1	Credit 3.2	Construction IAQ Management Plan, Before Occupancy	1
1	Credit 4.1	Low-Emitting Materials, Adhesives & Sealants	1
1	Credit 4.2	Low-Emitting Materials, Paints & Coatings	1
1	Credit 4.3	Low-Emitting Materials, Carpet Systems	1
1	Credit 4.4	Low-Emitting Materials, Composite Wood & Agrifiber Products	1
1	Credit 5	Indoor Chemical & Pollutant Source Control	1
1	Credit 6.1	Controllability of Systems, Lighting	1
1	Credit 6.2	Controllability of Systems, Thermal Comfort	1
1	Credit 7.1	Thermal Comfort, Design	1
1	Credit 7.2	Thermal Comfort, Verification	1
1	Credit 8.1	Daylight & Views, Daylight 75% of Spaces	1
1	Credit 8.2	Daylight & Views, Views for 90% of Spaces	1

Innovation & Design Process 5 Points

1	Credit 1.1	Innovation in Design: Provide Specific Title	1
1	Credit 1.2	Innovation in Design: Provide Specific Title	1
1	Credit 1.3	Innovation in Design: Provide Specific Title	1
1	Credit 1.4	Innovation in Design: Provide Specific Title	1
1	Credit 2	LEED® Accredited Professional	1

Project Totals (pre-certification estimates) 69 Points

Certified 26-32 points Silver 33-38 points Gold 39-51 points Platinum 52-69 points



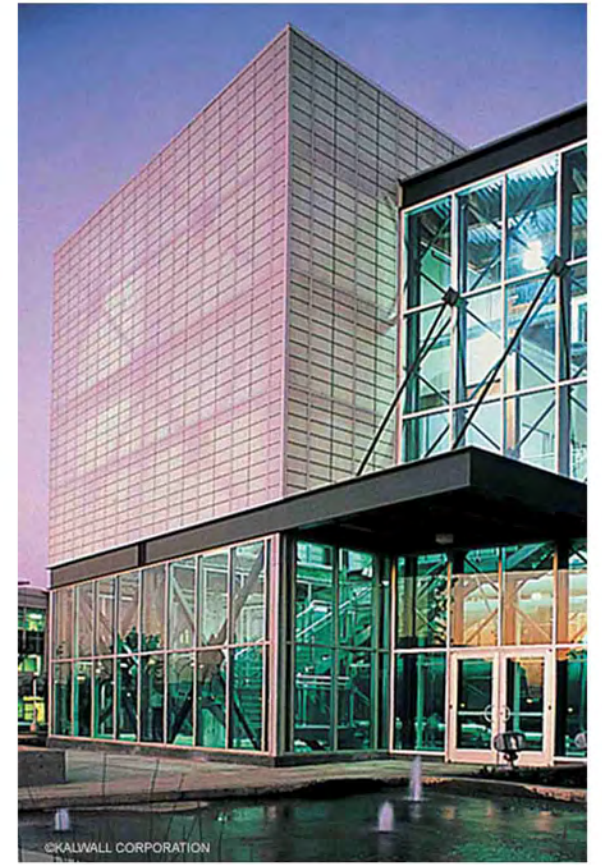
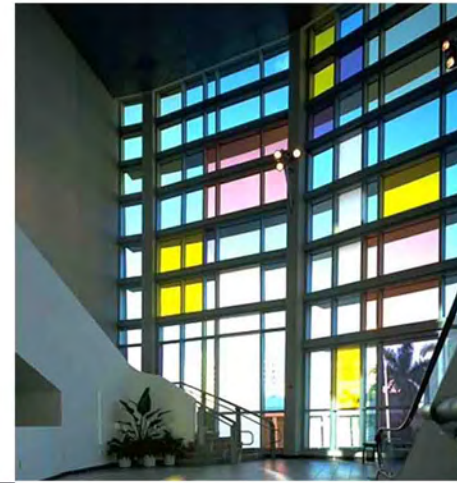
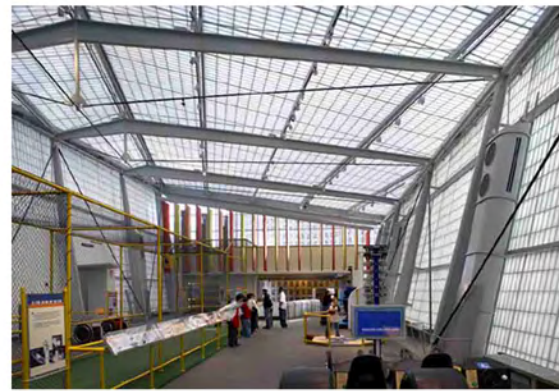
GREEN SCREEN
 HIGH EFFICIENCY GLAZING
 LOUVERED SUNSHADING
 OUTDOOR COURTYARD/ GREENSPACE

SUSTAINABLE DESIGN CRITERIA

- _PROMOTE LEED OBJECTIVES
- _MINIMIZE IMPACT OF SITE DESIGN & REVITALIZE THE 8TH ST. CORRIDOR
- _CREATE AN ENERGY & WATER EFFICIENT BUILDING
- _USE SUSTAINABLE MATERIALS & METHODS
- _CREATE A POSITIVE WORKING ENVIRONMENT WITH GOOD DAYLIGHTING & VIEWS
- _FIND INNOVATIVE WAYS TO DECREASE THE BUILDING DESIGN'S IMPACT ON THE ENVIRONMENT
- _PROMOTE LOCAL ECONOMY & TRADES

35 POINTS = LEED SILVER CERTIFICATE

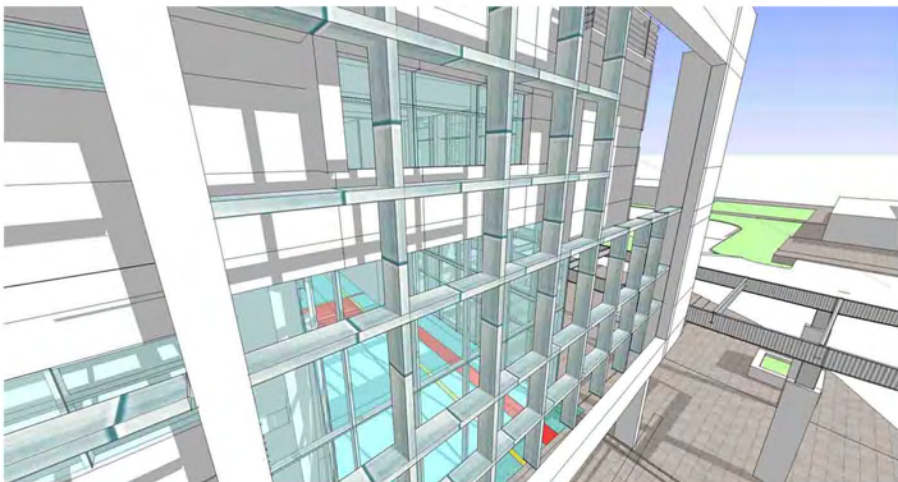




HIGH EFFICIENCY GLAZING SYSTEMS



INDOOR DAYLIGHTING



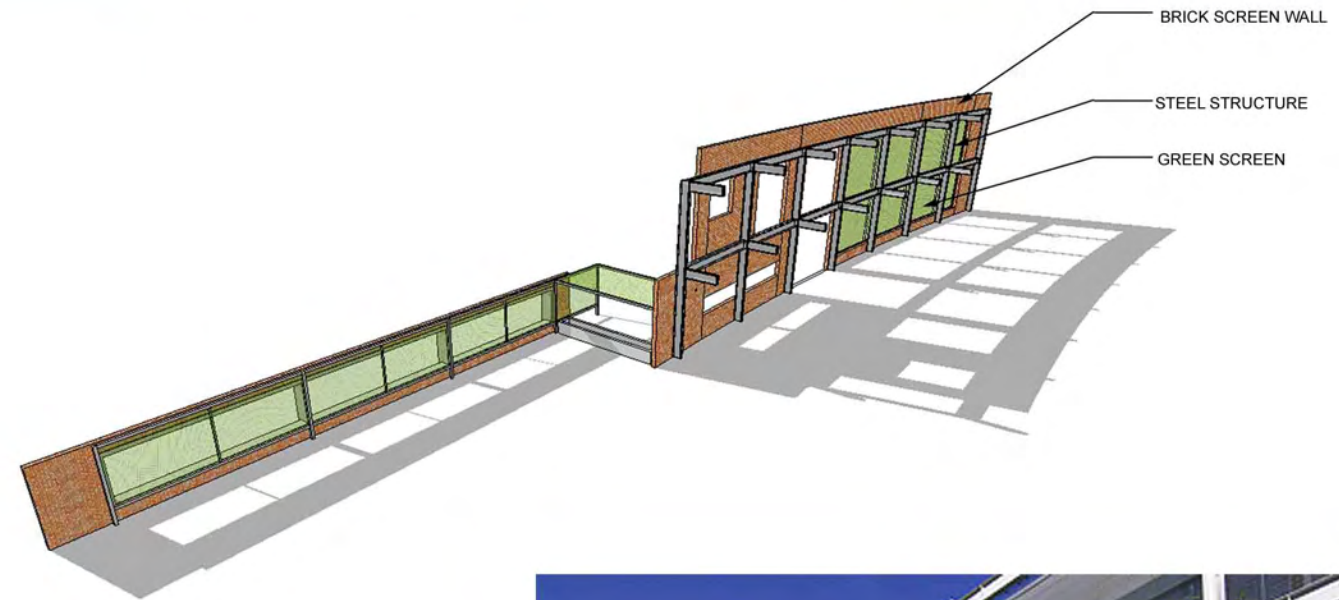
SOLAR SHADING



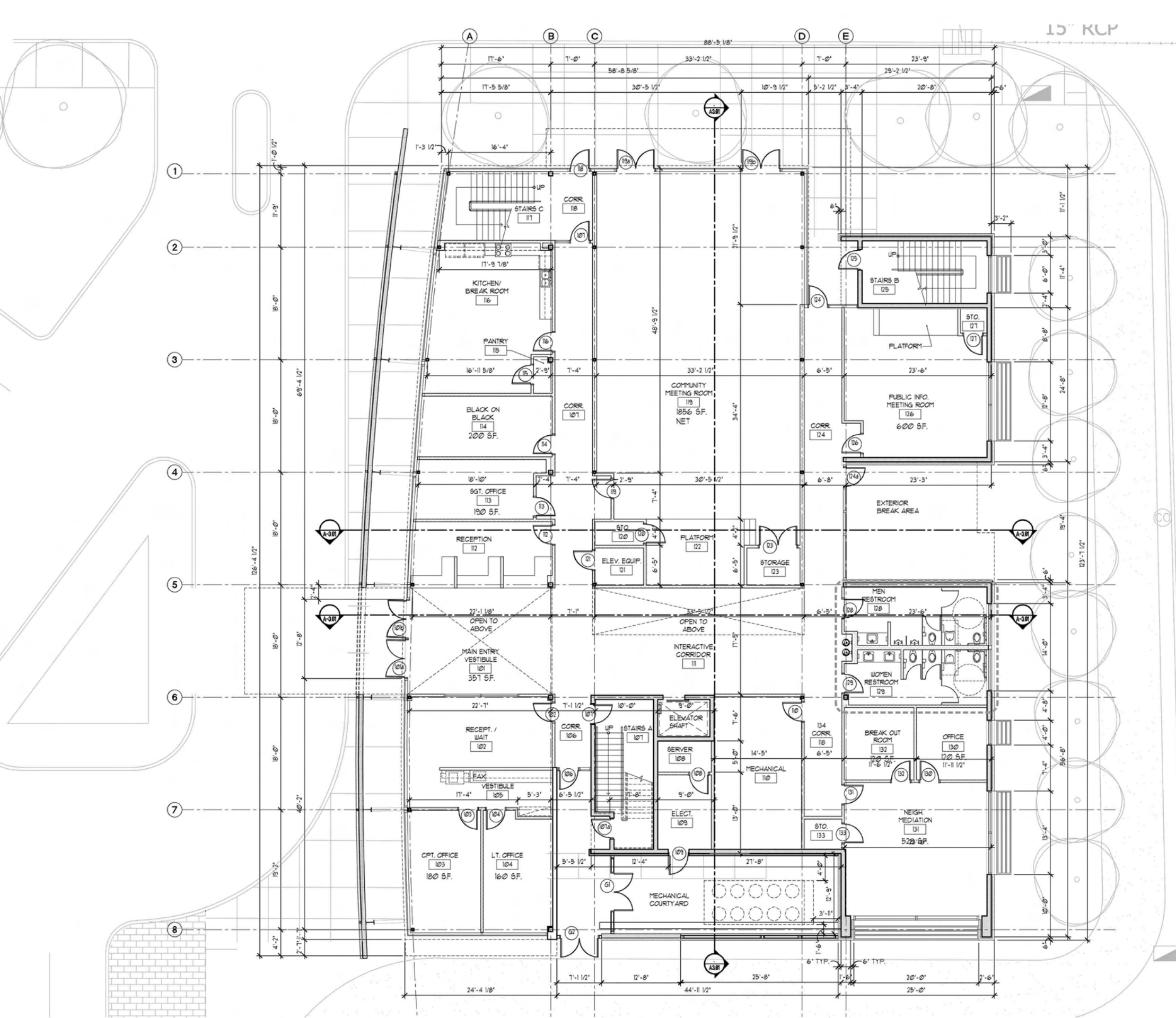
HIGH INSULATION VALUE WALL SYSTEMS



HIGH REFLECTIVITY ROOF SYSTEMS



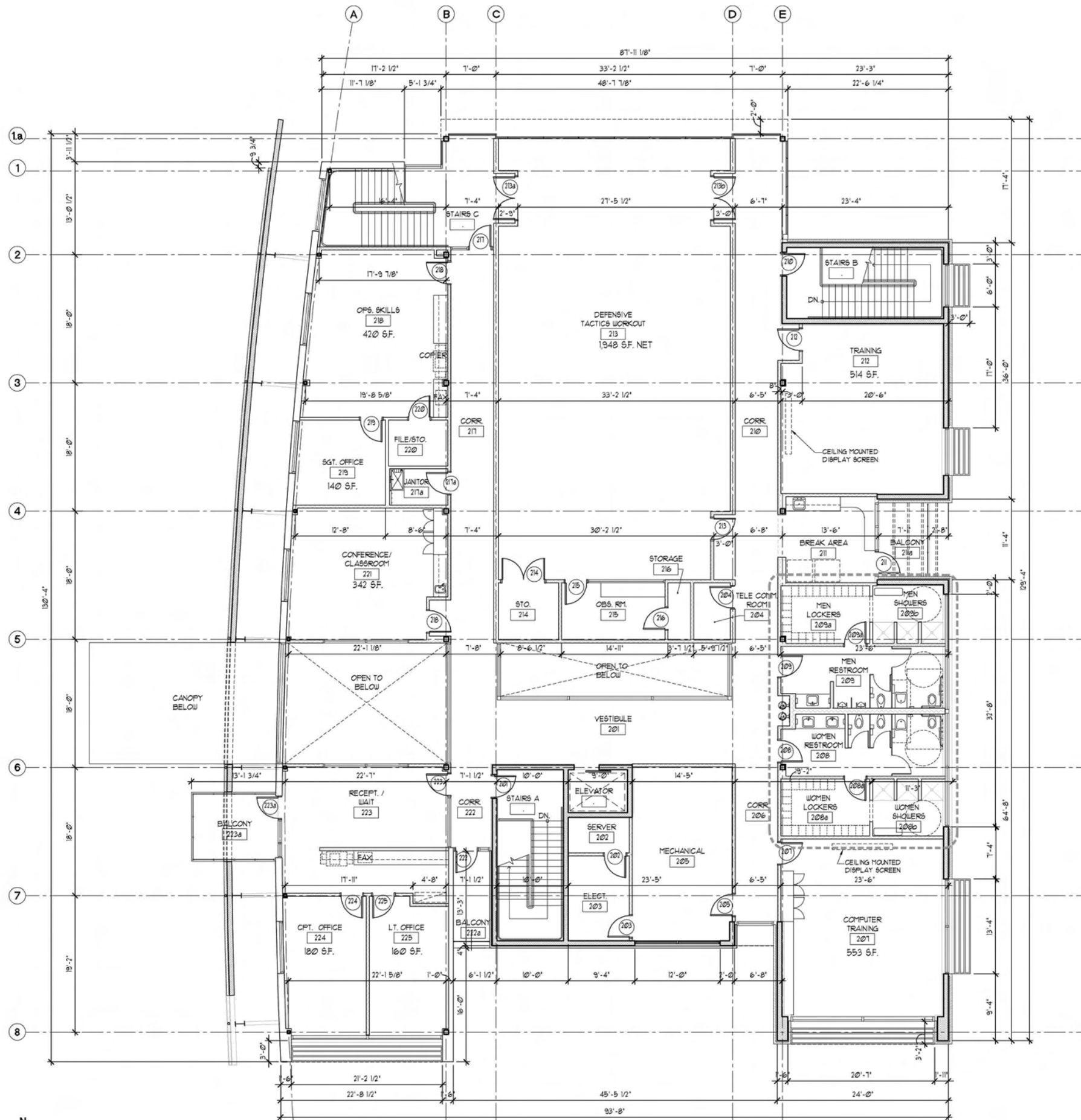
GREEN SCREENS




1st. Floor Plan - Training Center

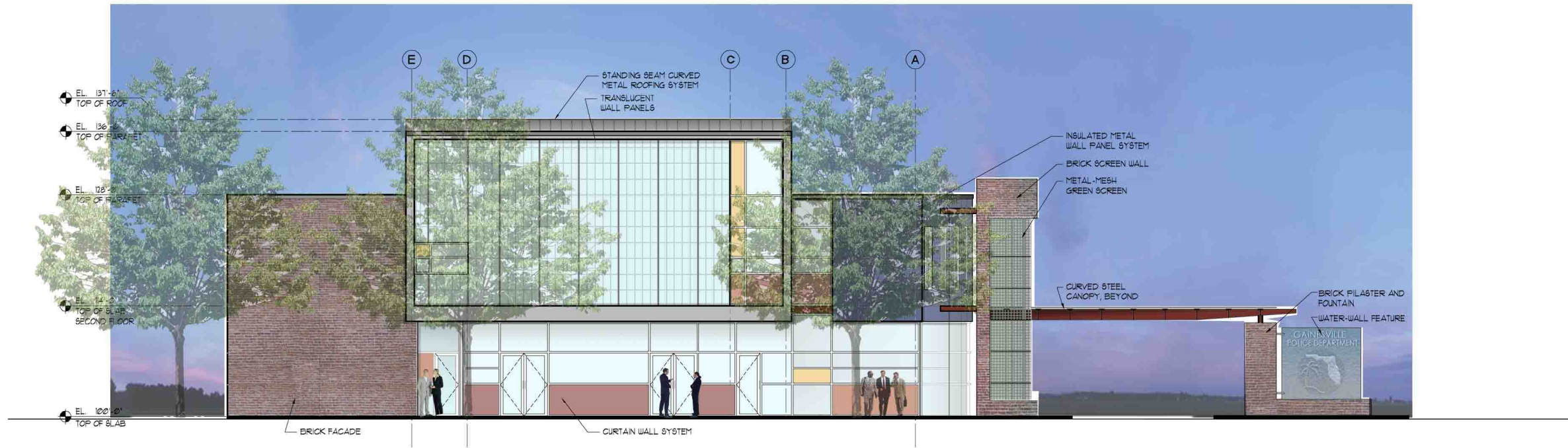

GPD TRAINING CENTER- Floor Plan
 October 17, 2007



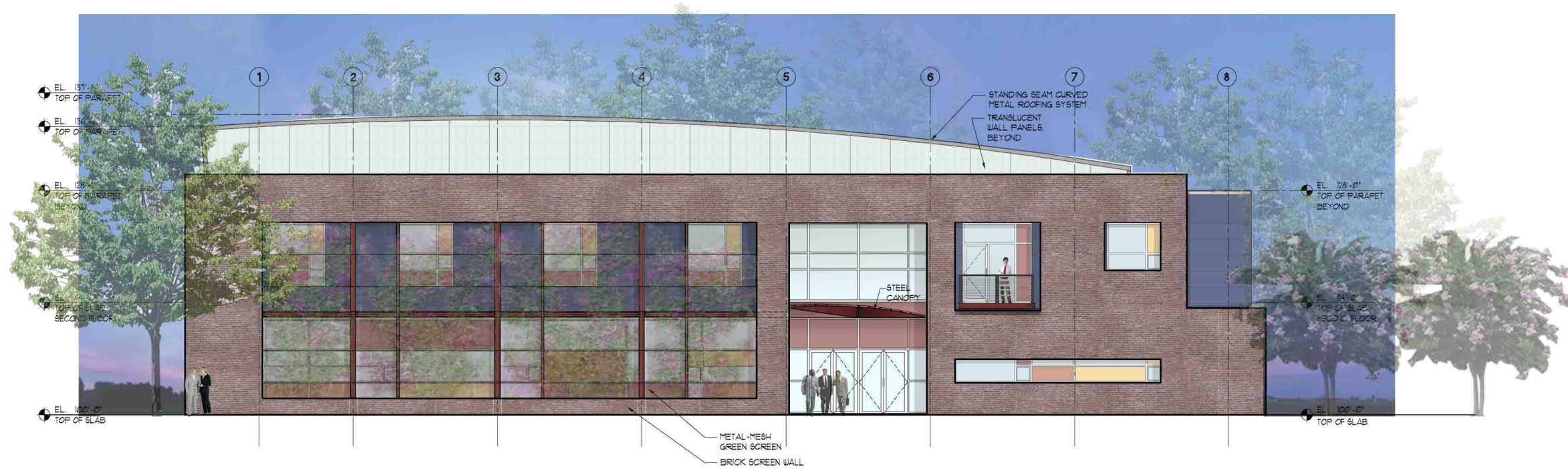



2nd. Floor Plan - Training Center



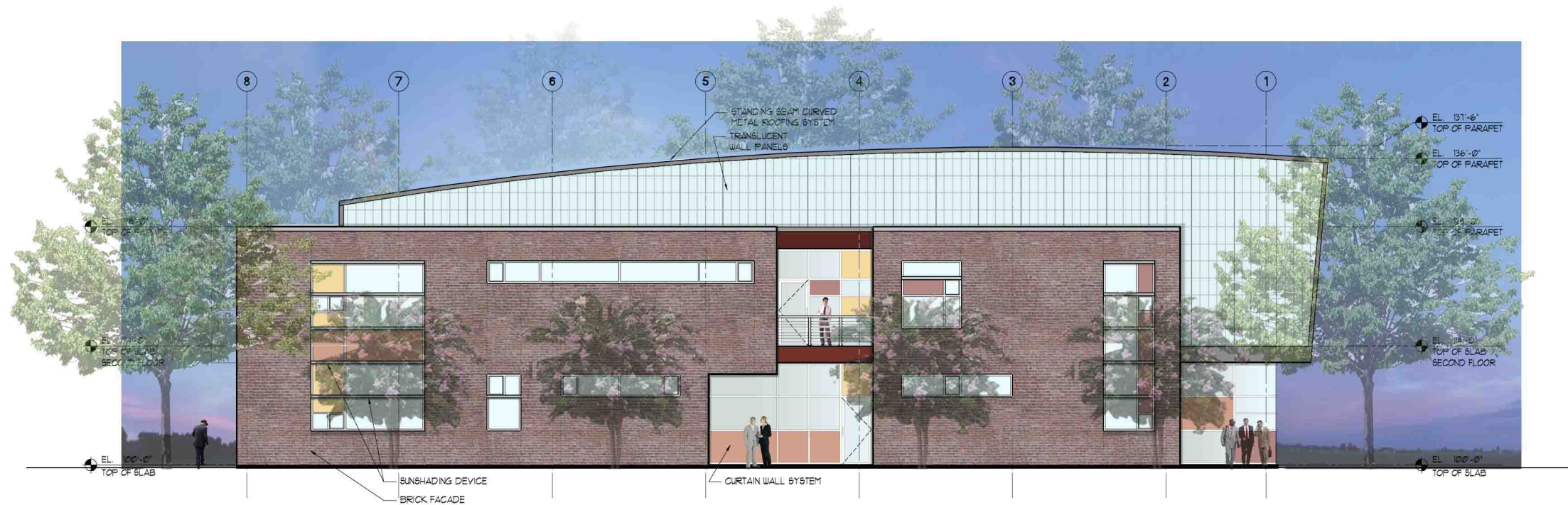
North Elevation



West Elevation



South Elevation



East Elevation