

Sample Location	SCTL (µg/kg)	
	RES.	LEACH.
Aldrin	60	300
Beta-BHC	500	2,400
Delta-BHC	24,000	490,000
Chlordane	2,800	14,000
4,4'-DDD	4,200	22,000
4,4'-DDT	2,900	15,000
Dieldrin	60	300
Heptachlor Epoxide	100	500

FOOTNOTES
 SCTL = Soil Cleanup Target Levels
 SCTL exceedance in bold type
 All results in micrograms per kilogram (µg/kg)
 RES = Direct Exposure—Residential
 COMM = Direct Exposure—Commercial
 LEACH = Leachability Based on Groundwater Criteria

LEGEND
 A1-W5 ● MONITORING WELL (MW)
 TW-15 ● TEMPORARY MW AND SOIL SAMPLING LOCATION
 FPC-1 ● SOIL SAMPLE LOCATION

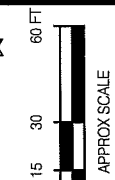


FIGURE 2.
 PESTICIDES IN SOIL
 RAILS TO TRAILS CORRIDOR
 GAINESVILLE, FLORIDA

Source: Water & Air Research, Inc., 2005.



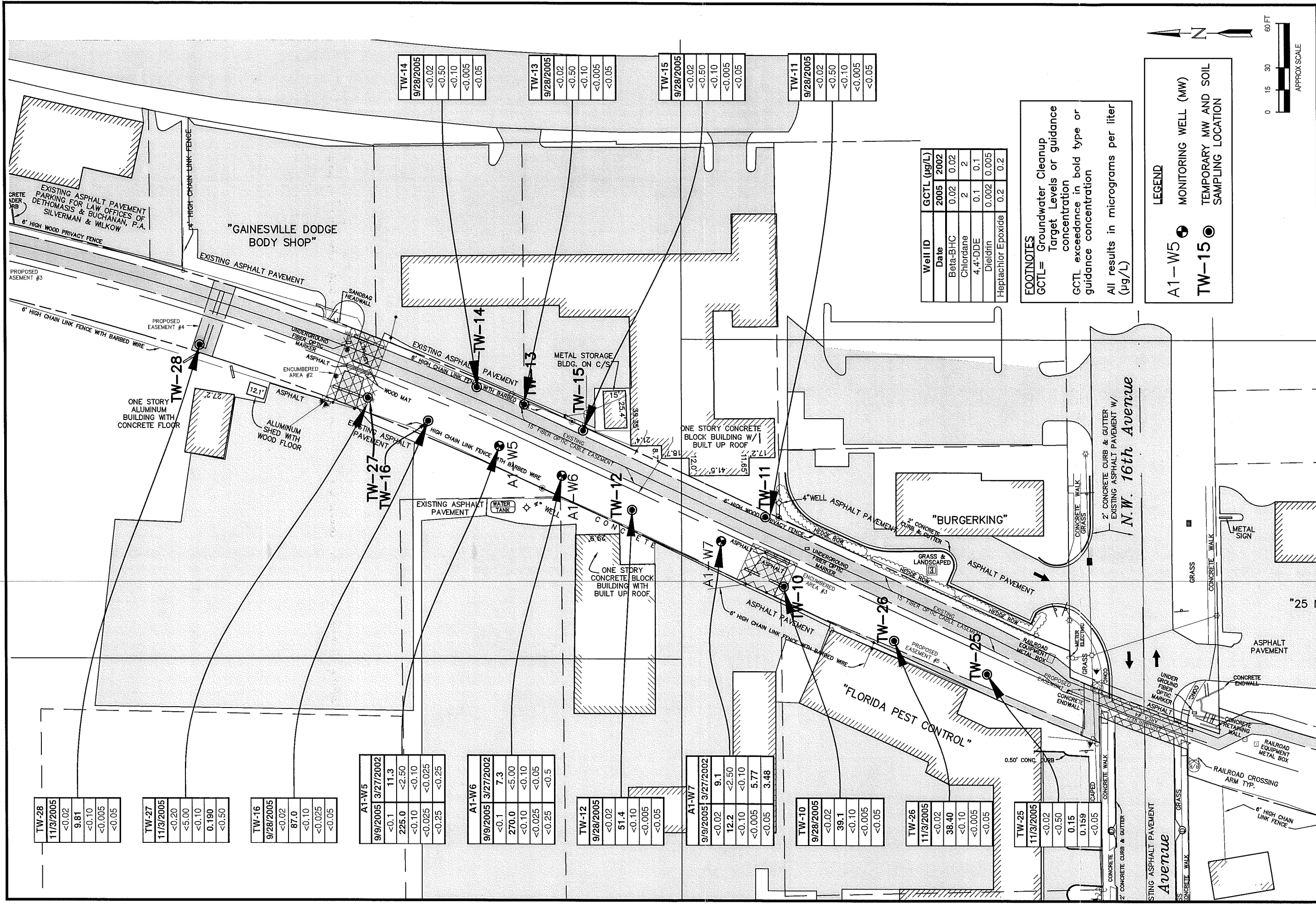


FIGURE 3.
PESTICIDES IN GROUNDWATER
RAILS TO TRAILS CORRIDOR
GAINESVILLE, FLORIDA

Source: Water & Air Research, Inc., 2005.

