

**LEGEND:**



- = FOUND 4"x4" CONCRETE MONUMENT AND 1/2" UNLESS OTHERWISE NOTED
- = FOUND DRILL HOLE
- = FOUND 1" IRON PIPE (NO ID)
- = UNLESS OTHERWISE NOTED
- = FOUND 6" S.W. STEEL WELDER & CAP BARRIED AS NOTED
- = FOUND NAIL AND DISK STAMPED "G&L 5077"
- ▲ = BENCHMARK
- ⊕ = FIRE HYDRANT
- ⊖ = CLEANOUT
- ⊕ = TREE (SIZE AND TYPE AS NOTED)
- ⊕ = GAS VALVE
- ⊕ = STORM INLET
- ⊕ = CONCRETE LIGHT POLE
- ⊕ = CABLE TELEVISION BOX
- ⊕ = ELECTRIC BOX
- ⊕ = ELECTRIC HANDHOLE
- ⊕ = ELECTRIC METER
- ⊕ = ELECTRIC METER
- ⊕ = FIBER OPTIC BOX
- ⊕ = GROUND LIGHT FIXTURE
- ⊕ = GAS METER
- ⊕ = GUY ANCHOR
- ⊕ = WOODEN POWER POLE
- ⊕ = OPERATION CONTROL VALVE
- ⊕ = LIGHT POLE
- ⊕ = SIGN WITH ONE POLE
- ⊕ = SIGN WITH TWO POLES
- ⊕ = PRESSURE INDICATOR VALVE
- ⊕ = SPACED
- ⊕ = SANITARY SEWER MANHOLE
- ⊕ = STORM SEWER MANHOLE
- ⊕ = TELEPHONE JUNCTION BOX
- ⊕ = TELEPHONE MANHOLE
- ⊕ = TELEPHONE PEDestal
- ⊕ = TRANSFORMER
- ⊕ = WELL
- ⊕ = WATER VALVE
- ⊕ = SANITARY SEWER CLEANOUT
- ⊕ = WATER METER
- ⊕ = BOLLARD
- ⊕ = MONITORING WELL
- ⊕ = IRRIGATION CONTROL VALVE BACKFLOW PREVENTER
- = OVERHEAD WIRE
- = SANITARY SEWER LINE
- = UNDERGROUND WATER LINE
- = CHAM LINK FENCE (SIDE AS NOTED)
- = STORM SEWER LINE
- = UNDERGROUND GAS LINE
- = IRON NAIL
- = UNDERGROUND ELECTRIC LINE (PER GRU MAP)
- = UNDERGROUND GAS LINE (PER GRU MAP)

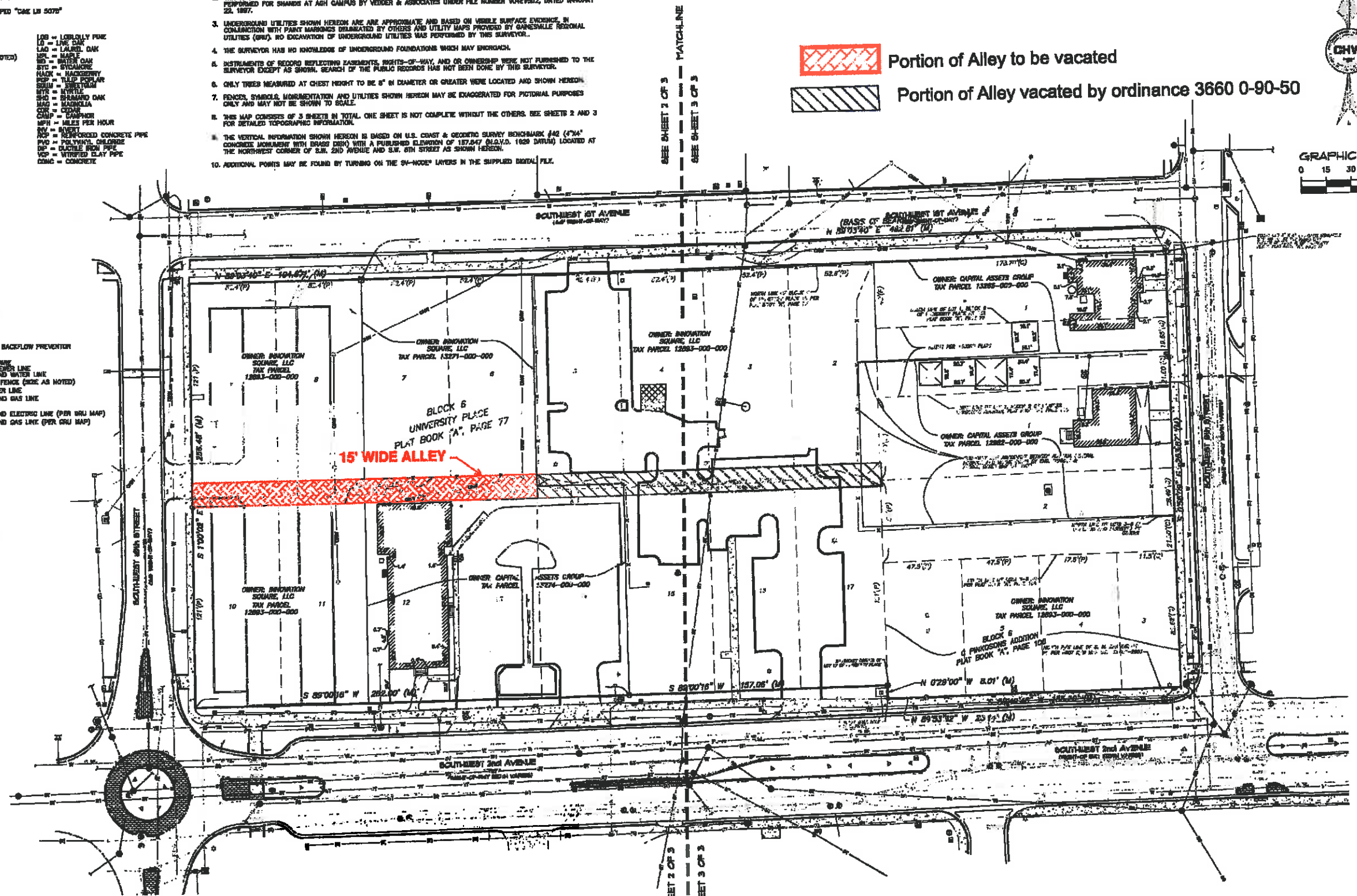
- = ASPHALT SURFACE
- = CONCRETE SURFACE
- = ROCK SURFACE
- = BRICK SURFACE
- = PATIO STONE SURFACE

**SURVEYOR'S NOTES:**

1. BEARINGS SHOWN HEREON ARE BASED ON AN ASSUMED VALUE OF NORTH 89°03'40" EAST FOR THE NORTH LINE OF BLOCK 6 OF UNIVERSITY PLACE, ACCORDING TO THE PLAT, THEREOF RECORDED IN PLAT BOOK "A", PAGE 77 OF THE PUBLIC RECORDS OF ALACHUA COUNTY, FLORIDA.
2. THIS IS NOT A BOUNDARY SURVEY. BOUNDARY INFORMATION SHOWN HEREON IS BASED ON A PREVIOUS SURVEY PERFORMED FOR SHARPS AT A&H CAMPUS BY VEDDER & ASSOCIATES UNDER FILE NUMBER V047622, DATED JANUARY 22, 1987.
3. UNDERGROUND UTILITIES SHOWN HEREON ARE APPROXIMATE AND BASED ON VISIBLE SURFACE EVIDENCE, IN CONJUNCTION WITH PLANT MARKINGS DELINEATED BY OTHERS AND UTILITY MAPS PROVIDED BY GAINESVILLE REGIONAL UTILITIES (GRU). NO EXCAVATION OF UNDERGROUND UTILITIES WAS PERFORMED BY THIS SURVEYOR.
4. THE SURVEYOR HAS NO KNOWLEDGE OF UNDERGROUND FOUNDATIONS WHICH MAY EXIST.
5. INSTRUMENTS OF RECORD REFLECTING EASEMENTS, RIGHTS-OF-WAY, AND OR OWNERSHIP WERE NOT FURNISHED TO THE SURVEYOR EXCEPT AS SHOWN. SEARCH OF THE PUBLIC RECORDS HAS NOT BEEN DONE BY THIS SURVEYOR.
6. ONLY TREES MEASURED AT CHEST HEIGHT TO BE 8" IN DIAMETER OR GREATER WERE LOCATED AND SHOWN HEREON.
7. FENCES, SYMBOLS, MONUMENTATION AND UTILITIES SHOWN HEREON MAY BE EXAGGERATED FOR PICTORIAL PURPOSES ONLY AND MAY NOT BE SHOWN TO SCALE.
8. THIS MAP CONSISTS OF 3 SHEETS IN TOTAL. ONE SHEET IS NOT COMPLETE WITHOUT THE OTHERS. SEE SHEETS 2 AND 3 FOR DETAILED TOPOGRAPHIC INFORMATION.
9. THE VERTICAL INFORMATION SHOWN HEREON IS BASED ON U.S. COAST & GEODETIC SURVEY BENCHMARK #42 (7" x 4" CONCRETE MONUMENT WITH BRASS DISK) WITH A PUBLISHED ELEVATION OF 117.847 (B.L.V.D. 1929 DATUM) LOCATED AT THE NORTHWEST CORNER OF S.W. 2ND AVENUE AND S.W. 6TH STREET AS SHOWN HEREON.
10. ADDITIONAL POINTS MAY BE FOUND BY TURNING ON THE SW-MODEL LAYERS IN THE SUPPLIED DIGITAL FILE.

**TOPOGRAPHIC SURVEY**  
 LOCATED IN SECTION 5, TOWNSHIP 10 SOUTH, RANGE 20 EAST,  
 ALACHUA COUNTY, FLORIDA

 Portion of Alley to be vacated  
 Portion of Alley vacated by ordinance 3660 0-90-50



SEE SHEET 2 OF 3  
 SEE SHEET 3 OF 3

SEE SHEET 2 OF 3  
 SEE SHEET 3 OF 3

Exhibit "B" to Ordinance No. 130846

**Causesaux, Hewitt, & Waipole, Inc.**  
 Engineering • Surveying • Planning  
 8371 NW 3rd Place, Gainesville, Florida 32607  
 Phone: 352-329-9266 • Fax: 352-329-9268 • www.chw.com

**CHW**

TRIMARK PROPERTIES

ARON H. HICKMAN

This map prepared by:  
 Aaron H. Hickman, L.S., 10775  
 Certificate of Authorization No. L.S. 10775  
 NOT VALID WITHOUT THE SIGNATURE AND  
 ORIGINAL RUBBED SEAL OF A LICENSED  
 SURVEYOR IN THE STATE OF FLORIDA

11-0340

1 OF 3