



Planning and Development Department

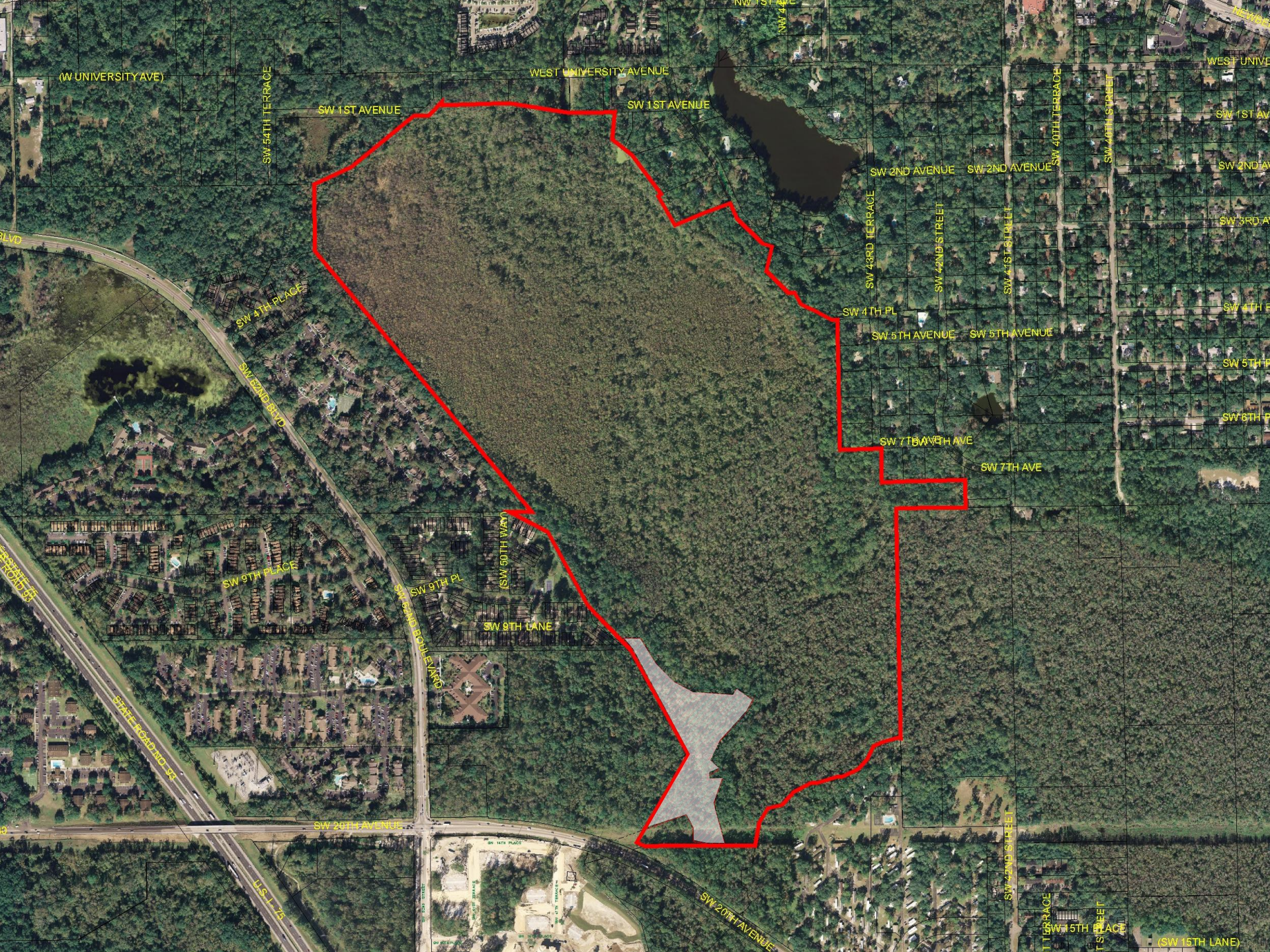
PB-10-27LUC (100147)

PB-10-28ZON (100148)

7 October 2010

Sugarfoot Prairie

- **Petitioner is City of Gainesville Parks and Recreation, Nature Operations**
- **One City-owned parcel with multiple land use and zoning designations**
- **Petition requests change to Conservation land use for entire parcel**
- **Staff recommends approval**
- **City Plan Board recommends approval**



(W UNIVERSITY AVE)

WEST UNIVERSITY AVENUE

SW 54TH TERRACE

SW 1ST AVENUE

SW 1ST AVENUE

SW 2ND AVENUE
SW 43RD TERRACE
SW 42ND STREET
SW 41ST STREET

SW 2ND AVENUE

SW 40TH TERRACE

SW 40TH STREET

SW 1ST AVENUE

SW 2ND AVENUE

SW 3RD AVENUE

SW 4TH AVENUE

SW 5TH AVENUE

SW 6TH AVENUE

BLVD

SW 4TH PLACE

SW 42ND BLVD

SW 4TH PL

SW 5TH AVENUE

SW 5TH AVENUE

SW 7TH AVENUE

SW 7TH AVE

SW 9TH PLACE

SW 42ND BLVD

SW 9TH PL

SW 9TH LANE

SW 50TH WAY

STATE ROAD 22

STATE ROAD 22

SW 20TH AVENUE

SW 14TH PLACE

SW 20TH AVENUE

SW 42ND STREET

SW 15TH PLACE

SW 15TH PLACE

(SW 15TH LANE)

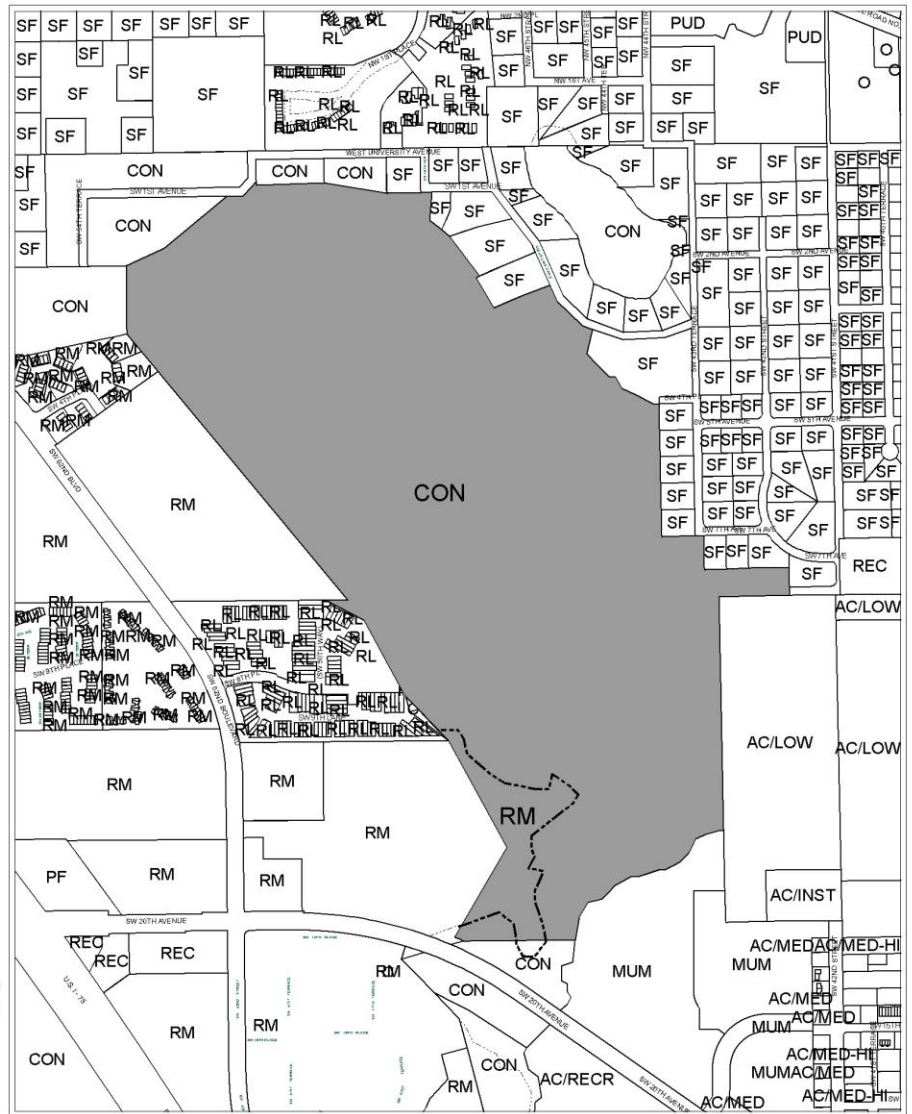
U.S. 174

Land Use Designations


- SF Single Family (up to 8 du/acre)
- RL Residential Low Density (up to 12 du/acre)
- RM Residential Medium Density (8-30 du/acre)
- RH Residential High Density (8-100 du/acre)
- MUR Mixed Use Residential (up to 75 du/acre)
- MUL Mixed Use Low Intensity (8-30 du/acre)
- MUM Mixed Use Medium Intensity (12-30 du/acre)
- MUH Mixed Use High Intensity (up to 150 du/acre)
- UMU1 Urban Mixed Use 1 (up to 75 du/acre)
- UMU2 Urban Mixed Use 2 (up to 100 du/acre)
- O Office
- C Commercial
- IND Industrial
- E Education
- REC Recreation
- CON Conservation
- AGR Agriculture
- PF Public Facilities
- PUD Planned Use District

- Division line between two land use districts
- City Limits

Area under petition consideration



EXISTING LAND USE

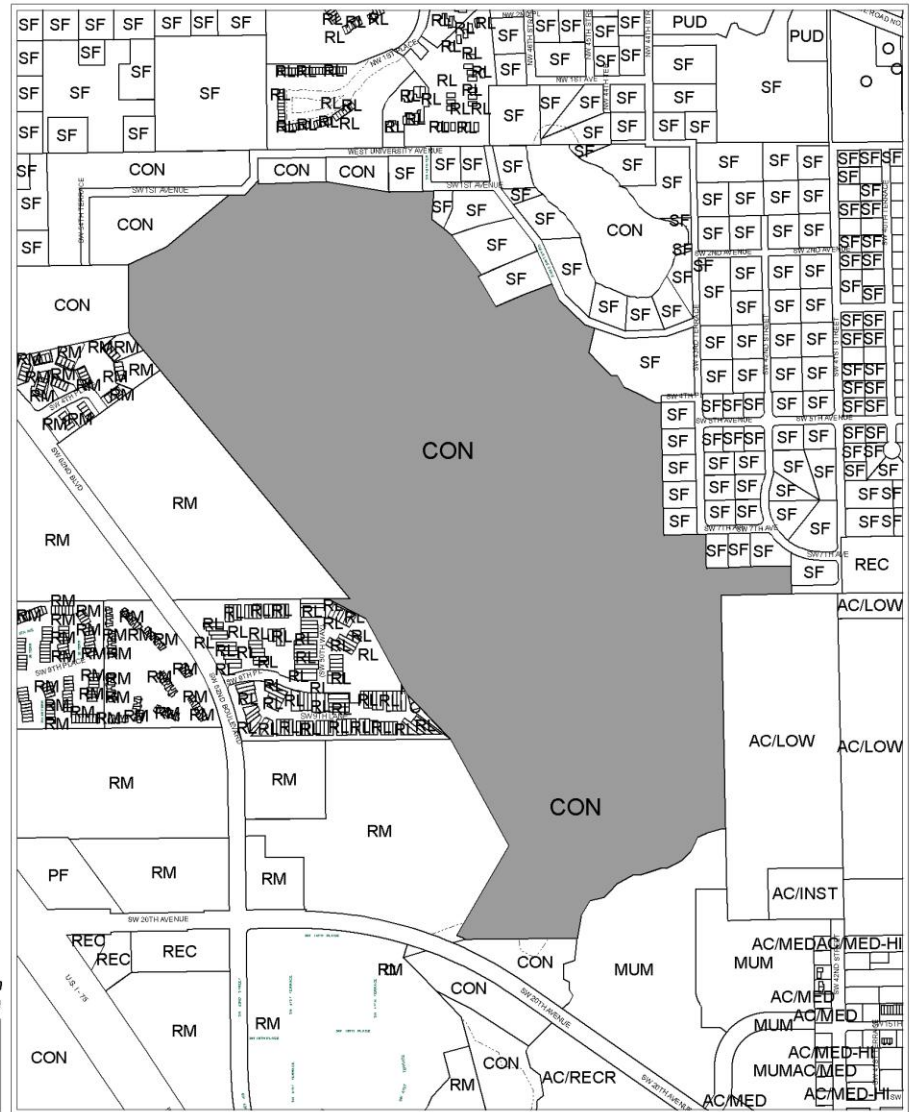
 No Scale	Name	Petition Request	Map(s)	Petition Number
	Geoffrey Park of Nature Parks Division of the City of Gainesville, agent for the City of Gainesville	Small Scale Land Use Amendment; Change from Residential-Medium to Conservation.	4043	PB-10-27 LUC

Land Use Designations

- SF Single Family (up to 8 du/acre)
- RL Residential Low Density (up to 12 du/acre)
- RM Residential Medium Density (8-30 du/acre)
- RH Residential High Density (8-100 du/acre)
- MUR Mixed Use Residential (up to 75 du/acre)
- MUL Mixed Use Low Intensity (8-30 du/acre)
- MUM Mixed Use Medium Intensity (12-30 du/acre)
- MUH Mixed Use High Intensity (up to 150 du/acre)
- UMU1 Urban Mixed Use 1 (up to 75 du/acre)
- UMU2 Urban Mixed Use 2 (up to 100 du/acre)
- O Office
- C Commercial
- IND Industrial
- E Education
- REC Recreation
- CON Conservation
- AGR Agriculture
- PF Public Facilities
- PUD Planned Use District

----- Division line between two land use districts
— City Limits

Area under petition consideration



PROPOSED LAND USE

	Name	Petition Request	Map(s)	Petition Number
	Geoffrey Park of Nature Parks Division of the City of Gainesville, agent for the City of Gainesville	Small Scale Land Use Amendment; Change from Residential-Medium to Conservation.	4043	PB-10-27 LUC