

Senior Recreation Center



*Alachua County & City of Gainesville
Senior Recreation Center*



Key Issues to Discuss

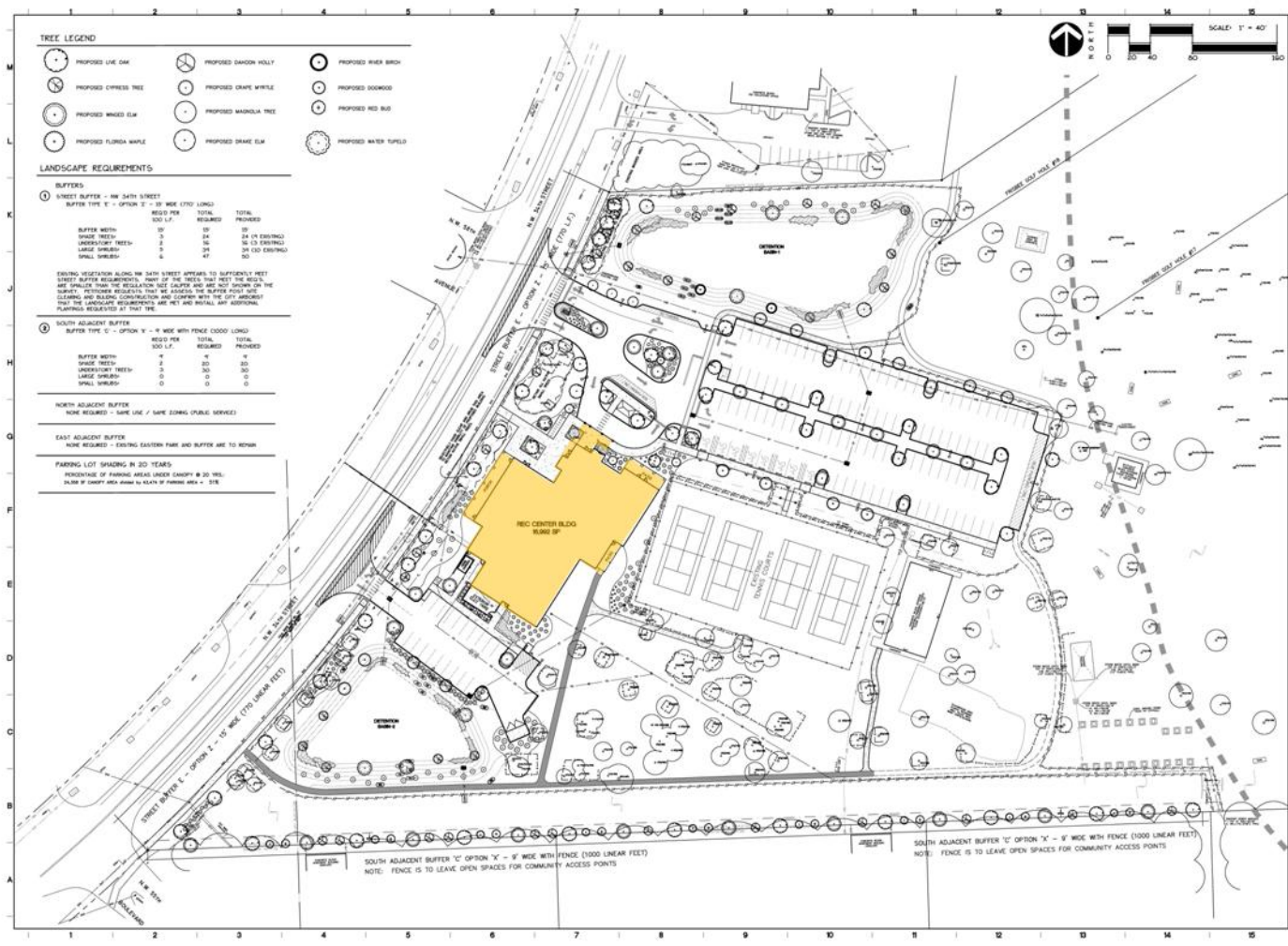
- Resolution of South Parking Lot Concerns w/ DOT
- Resolution of Bus Shelter Location w/ RTS
- DRB Approval Hearing
 - Exception to Build-To-Line Standard
 - Exception to 10' Sidewalk Width
- Front and South Elevation Changes
 - Additional Windows
 - Additional Stonework on Building Facade
 - Canopies at Main Entry and Multi-Purpose Room
 - Courtyard Landscaping



*Alachua County & City of Gainesville
Senior Recreation Center*



Landscape Plan



mri
 ARCHITECTURAL GROUP, INC.
 300 E. SOUTH STREET, SUITE 150
 ORLANDO, FLORIDA 32801
 (407) 245-9660 FAX: (407) 245-9682

CITY OF GAINESVILLE
 GAINESVILLE, FLORIDA

GAINESVILLE SENIOR RECREATION CENTER
 5701 NW 34TH STREET, GAINESVILLE, FL

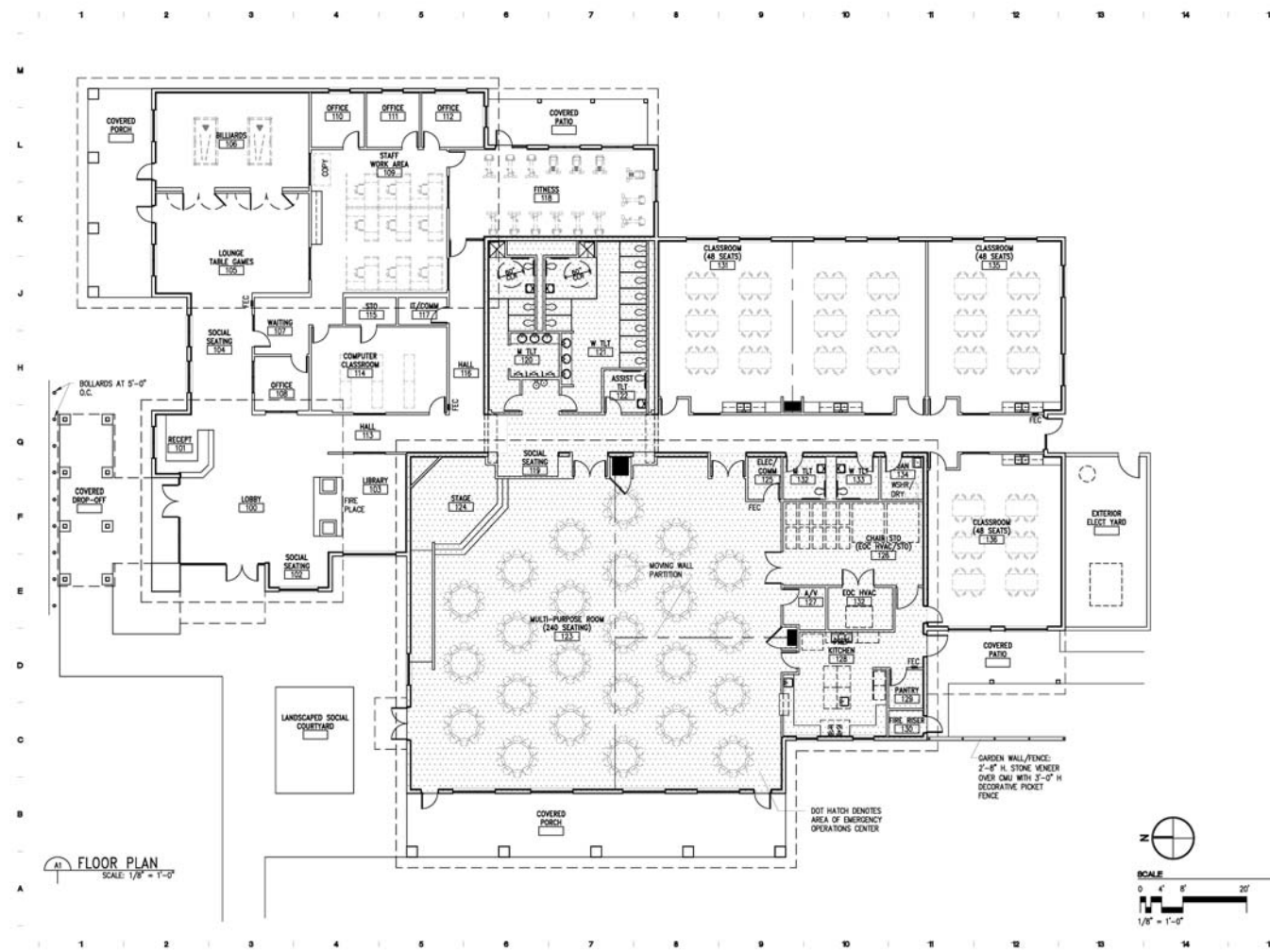
JOLA INCORPORATED
 Landscape Architecture & Site Planning, LLC
 222 Tampa Circle, Altamonte, Florida 32714, USA
 Phone: 352-217-5000 Email: jola@jola.com



Alachua County & City of Gainesville Senior Recreation Center



Floor Plan



mri
 ARCHITECTURAL GROUP, INC.
 300 E. SOUTH STREET, SUITE 150
 ORLANDO, FLORIDA 32801
 (407) 245-9990 FAX: (407) 245-9982

A. L. S. & ASSOCIATES
 PROJECT TITLE AND NUMBER

CITY OF GAINESVILLE
 GAINESVILLE, FLORIDA

GAINESVILLE SENIOR RECREATION CENTER
 5701 NW 34TH STREET, GAINESVILLE, FL

SITE PLAN REVIEW
 DRAWING

DATE AND REVISION	
NO.	
DATE	
BY	
CHKD BY	
APP. BY	
DATE	
NO.	
DATE	July 1, 2010
NO.	102
PROJECT NAME	SENIOR RECREATION CENTER FLOOR PLAN

AR 1.0

DATE: July 1, 2010
 NO.: 102
 PROJECT: SENIOR RECREATION CENTER FLOOR PLAN

SHEET EXTERNAL REFERENCES:
 SHEET FILENAME:



Achua County & City of Gainesville Senior Recreation Center



Main Entry Courtyard



Alachua County & City of Gainesville Senior Recreation Center



South Elevation



Alachua County & City of Gainesville Senior Recreation Center



Overhead View



Alachua County & City of Gainesville Senior Recreation Center

