



Gainesville Regional Utilities  
301 S.E. 4 Avenue www.gru.com  
Gainesville FL 32601 352-334-3434

Account: 2000-4670-6376 Page 1 of 2  
Bill Date: 07/17/2015

GAINESVILLE RENEWABLE ENERGY CENTER PARTNER: 1000182581  
LLC 706001000310  
11201 NW US HIGHWAY 441 ROUTE: MULTIPLE  
GAINESVILLE FL 32653 NRES

Cash Security Deposit on File is \$120.00

**ACCOUNT SUMMARY**

Current Month Charges:	\$	27,189.00
Adjustments & Service Charges	\$	-0.01
Balance Forward:	\$	0.00
<b>TOTAL AMOUNT DUE</b>	<b>\$</b>	<b>27,188.99</b>

**DUE BY 08/06/2015**

**SUMMARY OF SERVICES**

**UTILITIES** (See reverse for details about your utility charges.)

Electric	\$	23,741.57
Gas	\$	1,942.37
Wastewater	\$	62.85
<b>Total Utility Charge</b>	<b>\$</b>	<b>25,746.79</b>

**TAXES AND SURCHARGES**

Florida Gross Receipts Tax	\$	608.76
City of Gainesville Utility Tax	\$	833.45
<b>Total Taxes and Surcharges</b>	<b>\$</b>	<b>1,442.21</b>

**TOTAL CURRENT MONTH CHARGES** \$ **27,189.00**

**ADJUSTMENTS & SERVICE CHARGES**

SECURITY DEPOSIT INTEREST	\$	-0.01
<b>TOTAL ADJUSTMENTS &amp; SERVICE CHARGES</b>	<b>\$</b>	<b>-0.01</b>

**PREVIOUS BILL ACTIVITY**

Previous Balance	\$	49,406.42
Payment Amount (Date: 07/01/2015)	\$	-49,406.42
<b>BALANCE FORWARD</b>	<b>\$</b>	<b>0.00</b>

**AVERAGE DAILY CONSUMPTION**

Service	Meter	This Month	Last Month	Last Year
DEMAND	E008239991	3.00	3.00	35.00
ELECTRIC	EGRECVM101	6163.97	11832.14	23435.66
ELECTRIC	E008239991	58.18	66.21	66.21
BTU GAS	G17847979	0.00	0.00	0.00
<b>AVERAGE TEMPERATURE (High/Low)</b>		<b>93/69</b>	<b>89/65</b>	<b>90/70</b>
<b>MONTHLY RAINFALL (inches)</b>		<b>4.25</b>	<b>3.04</b>	<b>5.13</b>

**SERVICE AGREEMENT:** Use or consumption of services rendered by this City shall constitute an agreement by the consumer with the City to abide by the rules of the City with regard to its utility service, including, but not limited to prevailing ordinances and policies of this City and its departments.

A 1.5% late fee will be charged for new charges not paid by 7 P.M. on your due date.

Service disconnection may result from past due balances.

**MESSAGES**

THANK YOU FOR YOUR PAYMENT

- View GRU's 2015 Water Quality Report at [www.gru.com/waterreport](http://www.gru.com/waterreport). It contains important information about the source and quality of your drinking water. Your water met EPA drinking water standards.
- To have a copy mailed, call (352) 393-1600 or return your entire bill with this checked box [ ] marked
- Energy savings tip: Replace incandescent bulbs in exit signs with LEDs, and save about 90 percent on signage operating costs. If LEDs are not compatible with your current sign, a new sign could pay for itself within a year.
- Energy savings tip: To save money, use smart power strips to regulate energy use on equipment such as computers, copiers and printers.

Please tear off this portion and return it with your payment in the enclosed envelope.

**CHANGE OF MAILING ADDRESS**

Street: \_\_\_\_\_  
 City: \_\_\_\_\_  
 State: \_\_\_\_\_ Zip: \_\_\_\_\_  
 Home: \_\_\_\_\_ Cell: \_\_\_\_\_  
 Email: \_\_\_\_\_

ACCOUNT# 2000-4670-6376

Please write account number on check and make check payable to: **GRU**

Or pay online at [www.gru.com](http://www.gru.com)

**Current month charges due by 7pm on 08/06/2015**

Payment Amount

**TOTAL AMOUNT DUE**

**\$ 27,188.99**

000181 BILLQ 181 T:

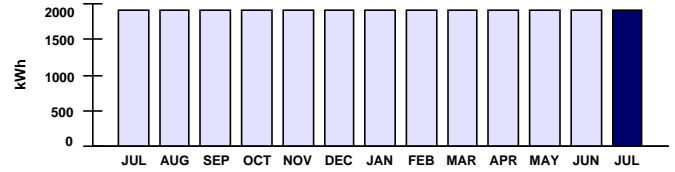
  
**GAINESVILLE RENEWABLE ENERGY CENTER LLC**  
 11201 NW US HIGHWAY 441  
 GAINESVILLE FL 32653-8001

**GAINESVILLE REGIONAL UTILITIES**

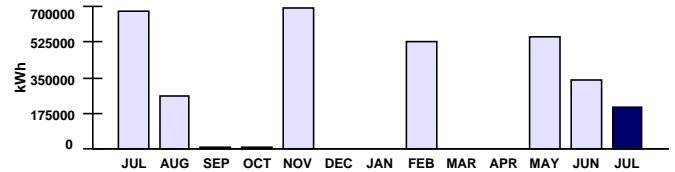
**Electric Service Details**

Meter Number	METER READING DATES	Meter Read Type	Days of Service	METER READINGS	Meter Multiplier	Electric Consumption	Peak Demand	Next Meter Read on or About
	Previous	Present		Previous	Present			
E008239991	06/04/2015	07/06/2015	33	2550	2554	480.00000	N/A	07/31/2015
EGRECV101	06/04/2015	07/06/2015	33	11416076	11619487	1.00000	N/A	07/31/2015

Description	Usage	Rate	Amount
ELECTRIC CUSTOMER CHARGE		\$ 29.50	\$ 29.50
ENERGY USE, TIER 1 (1 - 1500 kWh)	1,500	\$ 0.0690	\$ 103.50
ENERGY USE, TIER 2 (OVER 1500 kWh)	420	\$ 0.1000	\$ 42.00
ELECTRIC FUEL ADJUSTMENT	1,920	\$ 0.0780	\$ 149.76
FLORIDA GROSS RECEIPTS TAX			\$ 8.33
GAINESVILLE ELEC UTIL TAX			\$ 18.33
<b>Subtotal for meter E008239991</b>			<b>\$ 351.42</b>
-- IC 10/14 PRIMARY METER FOR GREC			



Description	Usage	Rate	Amount
ELECTRIC CUSTOMER CHARGE		\$ 350.00	\$ 350.00
ENERGY USE	203,411	\$ 0.0354	\$ 7,200.75
ELECTRIC FUEL ADJUSTMENT	203,411	\$ 0.0780	\$ 15,866.06
FLORIDA GROSS RECEIPTS TAX			\$ 600.43
GAINESVILLE ELEC UTIL TAX			\$ 815.12
<b>Subtotal for meter EGRECV101</b>			<b>\$ 24,832.36</b>
-- GREC			
<b>Total for Electric Service Details</b>			<b>\$ 25,183.78</b>



**Gas Service Details**

Meter Number	METER READING DATES	Meter Read Type	Days of Service	METER READINGS	Meter Multiplier	BTU Factor	Gas Consumption	Next Meter Read on or About
	Previous	Present		Previous	Present			
G17847979	06/01/2015	06/30/2015	30	105299	105868	1.00000	0 BTU	07/28/2015

Description	Usage	Rate	Amount
NATURAL GAS USE	0	\$	\$ 1,942.37
-- GREC			
<b>Total for Gas Service Details</b>			<b>\$ 1,942.37</b>

**Water and Wastewater Service Details**

Description	Usage	Rate	Amount
WASTEWATER CUSTOMER CHARGE		\$ 8.40	\$ 8.40
WASTEWATER BILLING	9	\$ 6.0500	\$ 54.45
<b>Total for Water and Wastewater Service Details</b>			<b>\$ 62.85</b>

**Customer Inquiries**

Customer Service	(352) 334-3434	Nationwide Toll-free Number	1-800-818-3436
Emergencies or Outages	(352) 334-2871	Stormwater Service	(352) 334-5070
		Solid Waste Service	(352) 334-2330

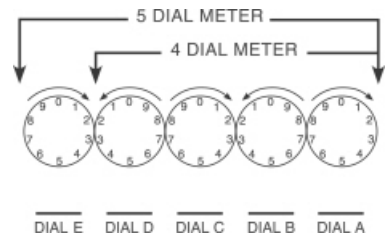
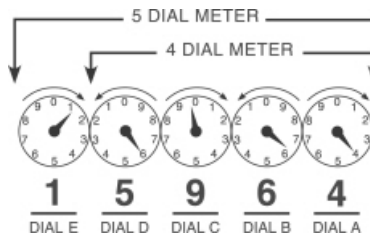
**Payment Information**

Make checks payable to **GRU**; return stub and check to: P.O. Box 147051, Gainesville, FL 32614-7051. You may also pay your bill online, by phone at 1-866-269-2881 or at a convenient location in your neighborhood. Visit [www.gru.com](http://www.gru.com) for details.

Lobby .....8 AM - 5 PM: M, T, Th, F and 9 AM - 5 PM: W  
 Drive-thru .....7:30 AM - 6 PM: M - F  
 Night depository payments will be posted the next business day if received after 3:30 PM weekdays.

**HOW TO READ YOUR METER**

Read the dials from right to left (A - E). If the dial hand is between two numbers, use the lower number.





Gainesville Regional Utilities  
301 S.E. 4 Avenue www.gru.com  
Gainesville FL 32601 352-334-3434

Account: 2000-4670-6376 Page 1 of 2  
Bill Date: 06/16/2015

GAINESVILLE RENEWABLE ENERGY CENTER PARTNER: 1000182581  
LLC 709000925211  
11201 NW US HIGHWAY 441 ROUTE: MULTIPLE  
GAINESVILLE FL 32653 NRES

Cash Security Deposit on File is \$120.00

**ACCOUNT SUMMARY**

Current Month Charges:	\$	49,406.43
Adjustments & Service Charges	\$	-0.01
Balance Forward:	\$	0.00
<b>TOTAL AMOUNT DUE</b>	<b>\$</b>	<b>49,406.42</b>

**DUE BY 07/06/2015**

**SUMMARY OF SERVICES**

**UTILITIES** (See reverse for details about your utility charges.)

Electric	\$	39,585.93
Gas	\$	7,379.98
Wastewater	\$	56.80
<b>Total Utility Charge</b>	<b>\$</b>	<b>47,022.71</b>

**TAXES AND SURCHARGES**

Florida Gross Receipts Tax	\$	1,015.03
City of Gainesville Utility Tax	\$	1,368.69
<b>Total Taxes and Surcharges</b>	<b>\$</b>	<b>2,383.72</b>

**TOTAL CURRENT MONTH CHARGES** \$ **49,406.43**

**ADJUSTMENTS & SERVICE CHARGES**

SECURITY DEPOSIT INTEREST	\$	-0.01
<b>TOTAL ADJUSTMENTS &amp; SERVICE CHARGES</b>	<b>\$</b>	<b>-0.01</b>

**PREVIOUS BILL ACTIVITY**

Previous Balance	\$	66,911.96
Payment Amount (Date: 05/26/2015)	\$	-66,911.96
<b>BALANCE FORWARD</b>	<b>\$</b>	<b>0.00</b>

**AVERAGE DAILY CONSUMPTION**

Service	Meter	This Month	Last Month	Last Year
DEMAND	E008239991	3.00	3.00	35.00
ELECTRIC	EGRECVM101	11832.14	17178.72	25605.27
ELECTRIC	E008239991	66.21	60.00	64.00
BTU GAS	G17847979	0.00	0.00	0.00
<b>AVERAGE TEMPERATURE (High/Low)</b>		<b>89/65</b>	<b>83/61</b>	<b>87/63</b>
<b>MONTHLY RAINFALL (inches)</b>		<b>3.04</b>	<b>3.37</b>	<b>2.52</b>

**SERVICE AGREEMENT:** Use or consumption of services rendered by this City shall constitute an agreement by the consumer with the City to abide by the rules of the City with regard to its utility service, including, but not limited to prevailing ordinances and policies of this City and its departments.

A 1.5% late fee will be charged for new charges not paid by 7 P.M. on your due date.

Service disconnection may result from past due balances.

**MESSAGES**

- THANK YOU FOR YOUR PAYMENT
- This year's annual water quality results will be available in July. Visit [gru.com/waterreport](http://gru.com/waterreport) to view the complete water quality report.
- Visit GRU Storm Central to learn how to prepare for a storm. Information about what to do before, during and after a storm is available at [gru.com/stormcentral](http://gru.com/stormcentral).
- Have a qualified technician test, clean and adjust your air-conditioning equipment to increase efficiency and save money. This typically includes replacing dirty air filters and cleaning intake screens, condenser coils, supply registers and return grilles.

Please tear off this portion and return it with your payment in the enclosed envelope.

**CHANGE OF MAILING ADDRESS**

Street: \_\_\_\_\_  
 City: \_\_\_\_\_  
 State: \_\_\_\_\_ Zip: \_\_\_\_\_  
 Home: \_\_\_\_\_ Cell: \_\_\_\_\_  
 Email: \_\_\_\_\_

ACCOUNT# 2000-4670-6376

Please write account number on check and make check payable to: **GRU**

Or pay online at [www.gru.com](http://www.gru.com)

**Current month charges due by 7pm on 07/06/2015**

Payment Amount

**TOTAL AMOUNT DUE**

**\$ 49,406.42**

000231 BILLQ 231 T:

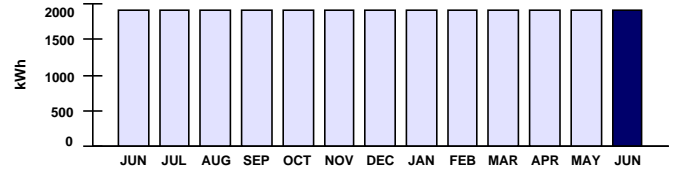
  
**GAINESVILLE RENEWABLE ENERGY CENTER LLC**  
 11201 NW US HIGHWAY 441  
 GAINESVILLE FL 32653-8001

**GAINESVILLE REGIONAL UTILITIES**

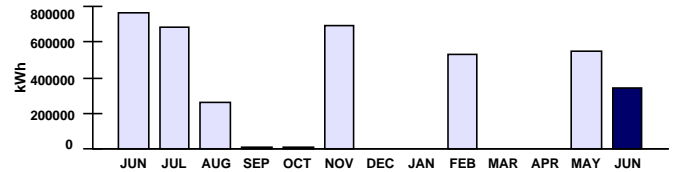
**Electric Service Details**

Meter Number	METER READING DATES Previous	METER READING DATES Present	Meter Read Type	Days of Service	METER READINGS Previous	METER READINGS Present	Meter Multiplier	Electric Consumption	Peak Demand	Next Meter Read on or About
E008239991	05/06/2015	06/03/2015	ACTUAL	29	2546	2550	480.00000	1,920 kWh	N/A	06/30/2015
EGRECV101	05/06/2015	06/03/2015	ACTUAL	29	11072944	11416076	1.00000	343,132 kWh	N/A	06/30/2015

Description	Usage	Rate	Amount
ELECTRIC CUSTOMER CHARGE		\$ 29.50	\$ 29.50
ENERGY USE, TIER 1 (1 - 1500 kWh)	1,500	\$ 0.0690	\$ 103.50
ENERGY USE, TIER 2 (OVER 1500 kWh)	420	\$ 0.1000	\$ 42.00
ELECTRIC FUEL ADJUSTMENT	1,920	\$ 0.0780	\$ 149.76
FLORIDA GROSS RECEIPTS TAX			\$ 8.33
GAINESVILLE ELEC UTIL TAX			\$ 18.33
<b>Subtotal for meter E008239991</b>			<b>\$ 351.42</b>
-- IC 10/14 PRIMARY METER FOR GREC			



Description	Usage	Rate	Amount
ELECTRIC CUSTOMER CHARGE		\$ 350.00	\$ 350.00
ENERGY USE	343,132	\$ 0.0354	\$ 12,146.87
ELECTRIC FUEL ADJUSTMENT	343,132	\$ 0.0780	\$ 26,764.30
FLORIDA GROSS RECEIPTS TAX			\$ 1,006.70
GAINESVILLE ELEC UTIL TAX			\$ 1,350.36
<b>Subtotal for meter EGRECV101</b>			<b>\$ 41,618.23</b>
-- GREC			
<b>Total for Electric Service Details</b>			<b>\$ 41,969.65</b>



**Gas Service Details**

Meter Number	METER READING DATES Previous	METER READING DATES Present	Meter Read Type	Days of Service	METER READINGS Previous	METER READINGS Present	Meter Multiplier	BTU Factor	Gas Consumption	Next Meter Read on or About
G17847979	05/01/2015	05/31/2015	ACTUAL	31	103201	105299	1.00000	1.02600	0 BTU	06/25/2015

Description	Usage	Rate	Amount
NATURAL GAS USE	0	\$	\$ 7,379.98
-- GREC			
<b>Total for Gas Service Details</b>			<b>\$ 7,379.98</b>

**Water and Wastewater Service Details**

Description	Usage	Rate	Amount
WASTEWATER CUSTOMER CHARGE		\$ 8.40	\$ 8.40
WASTEWATER BILLING	8	\$ 6.0500	\$ 48.40
<b>Total for Water and Wastewater Service Details</b>			<b>\$ 56.80</b>

**Customer Inquiries**

Customer Service	(352) 334-3434	Nationwide Toll-free Number	1-800-818-3436
Emergencies or Outages	(352) 334-2871	Stormwater Service	(352) 334-5070
		Solid Waste Service	(352) 334-2330

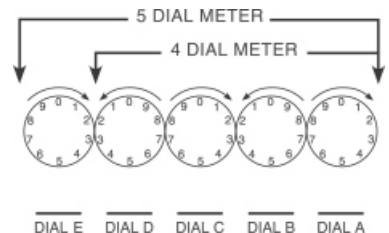
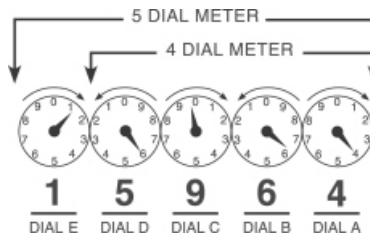
**Payment Information**

Make checks payable to **GRU**; return stub and check to: P.O. Box 147051, Gainesville, FL 32614-7051. You may also pay your bill online, by phone at 1-866-269-2881 or at a convenient location in your neighborhood. Visit [www.gru.com](http://www.gru.com) for details.

Lobby .....8 AM - 5 PM: M, T, Th, F and 9 AM - 5 PM: W  
 Drive-thru .....7:30 AM - 6 PM: M - F  
 Night depository payments will be posted the next business day if received after 3:30 PM weekdays.

**HOW TO READ YOUR METER**

Read the dials from right to left (A - E). If the dial hand is between two numbers, use the lower number.





Gainesville Regional Utilities  
301 S.E. 4 Avenue www.gru.com  
Gainesville FL 32601 352-334-3434

Account: 2000-4670-6376 Page 1 of 2  
Bill Date: 05/18/2015

GAINESVILLE RENEWABLE ENERGY CENTER PARTNER: 1000182581  
LLC 707000964449  
11201 NW US HIGHWAY 441 ROUTE: MULTIPLE  
GAINESVILLE FL 32653 NRES

Cash Security Deposit on File is \$120.00

ACCOUNT SUMMARY		
Current Month Charges:	\$	66,911.97
Adjustments & Service Charges	\$	-0.01
Balance Forward:	\$	0.00
<b>TOTAL AMOUNT DUE</b>	<b>\$</b>	<b>66,911.96</b>

**DUE BY 06/07/2015**

**SUMMARY OF SERVICES**

**UTILITIES** (See reverse for details about your utility charges.)

Electric	\$	63,012.89
Gas	\$	54.39
Wastewater	\$	68.90
<b>Total Utility Charge</b>	<b>\$</b>	<b>63,136.18</b>

**TAXES AND SURCHARGES**

Florida Gross Receipts Tax	\$	1,615.72
City of Gainesville Utility Tax	\$	2,160.07
<b>Total Taxes and Surcharges</b>	<b>\$</b>	<b>3,775.79</b>
<b>TOTAL CURRENT MONTH CHARGES</b>	<b>\$</b>	<b>66,911.97</b>

**ADJUSTMENTS & SERVICE CHARGES**

SECURITY DEPOSIT INTEREST	\$	-0.01
<b>TOTAL ADJUSTMENTS &amp; SERVICE CHARGES</b>	<b>\$</b>	<b>-0.01</b>

**PREVIOUS BILL ACTIVITY**

Previous Balance	\$	846.60
Payment Amount (Date: 05/01/2015)	\$	-846.60
<b>BALANCE FORWARD</b>	<b>\$</b>	<b>0.00</b>

**AVERAGE DAILY CONSUMPTION**

Service	Meter	This Month	Last Month	Last Year
DEMAND	E008239991	3.00	3.00	35.00
ELECTRIC	EGRECVM101	17178.72	0.00	6777.97
ELECTRIC	E008239991	60.00	64.00	60.00
BTU GAS	G17847979	0.00	0.00	0.00
<b>AVERAGE TEMPERATURE (High/Low)</b>		<b>83/61</b>	<b>80/55</b>	<b>81/58</b>
<b>MONTHLY RAINFALL (inches)</b>		<b>3.37</b>	<b>1.06</b>	<b>3.44</b>

**SERVICE AGREEMENT:** Use or consumption of services rendered by this City shall constitute an agreement by the consumer with the City to abide by the rules of the City with regard to its utility service, including, but not limited to prevailing ordinances and policies of this City and its departments.  
 A 1.5% late fee will be charged for new charges not paid by 7 P.M. on your due date.  
 Service disconnection may result from past due balances.

**MESSAGES**

- THANK YOU FOR YOUR PAYMENT
- This year's annual water quality results will be available in July. Visit [gru.com/waterreport](http://gru.com/waterreport) to view the complete water quality report.
- Go paperless. With eBill, you can get monthly email reminders to see your amount due, bill details and payment due date. Schedule a payment on our secure website. For details and sign up, visit [gru.com/ebill](http://gru.com/ebill).
- GRU's Conservation Services team can help your business find ways to save money, improve comfort, and review your rate. Our trained staff will inspect your business at no charge. Call 352-393-1460 to schedule a survey.
- Do you want a networking solution that will grow with your business? GRUCom Fiber Optic Communications offers Internet, data transport, colocation and other telecommunications services over a reliable, all-fiber platform. For more information and a price quote, call GRUCom at 352-334-3200 or visit [GRUCom.com](http://GRUCom.com).

Please tear off this portion and return it with your payment in the enclosed envelope.

**CHANGE OF MAILING ADDRESS**

Street: \_\_\_\_\_  
 City: \_\_\_\_\_  
 State: \_\_\_\_\_ Zip: \_\_\_\_\_  
 Home: \_\_\_\_\_ Cell: \_\_\_\_\_  
 Email: \_\_\_\_\_

ACCOUNT# 2000-4670-6376

Please write account number on check and make check payable to: **GRU**

Or pay online at [www.gru.com](http://www.gru.com)

**Current month charges due by 7pm on 06/07/2015**

\_\_\_\_\_ Payment Amount

<b>TOTAL AMOUNT DUE</b>
<b>\$ 66,911.96</b>

000063 BILLQ 63 T:

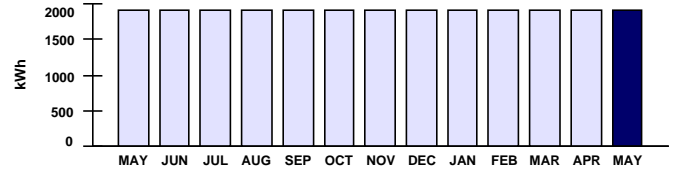
  
 GAINESVILLE RENEWABLE ENERGY CENTER LLC  
 11201 NW US HIGHWAY 441  
 GAINESVILLE FL 32653-8001

**GAINESVILLE REGIONAL UTILITIES**

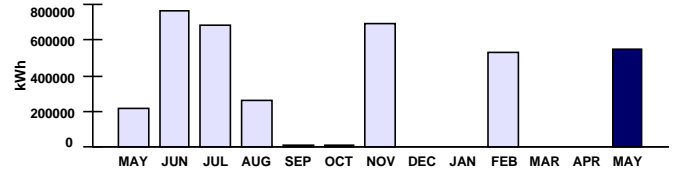
**Electric Service Details**

Meter Number	METER READING DATES Previous	METER READING DATES Present	Meter Read Type	Days of Service	METER READINGS Previous	METER READINGS Present	Meter Multiplier	Electric Consumption	Peak Demand	Next Meter Read on or About
E008239991	04/04/2015	05/05/2015	ACTUAL	32	2542	2546	480.00000	1,920 kWh	N/A	05/29/2015
EGRECVM101	04/04/2015	05/05/2015	ACTUAL	32	10523225	11072944	1.00000	549,719kWh	N/A	05/29/2015

Description	Usage	Rate	Amount
ELECTRIC CUSTOMER CHARGE		\$ 29.50	\$ 29.50
ENERGY USE, TIER 1 (1 - 1500 kWh)	1,500	\$ 0.0690	\$ 103.50
ENERGY USE, TIER 2 (OVER 1500 kWh)	420	\$ 0.1000	\$ 42.00
ELECTRIC FUEL ADJUSTMENT	1,920	\$ 0.0780	\$ 149.76
FLORIDA GROSS RECEIPTS TAX			\$ 8.33
GAINESVILLE ELEC UTIL TAX			\$ 18.33
<b>Subtotal for meter E008239991</b>			<b>\$ 351.42</b>
-- IC 10/14 PRIMARY METER FOR GREC			



Description	Usage	Rate	Amount
ELECTRIC CUSTOMER CHARGE		\$ 350.00	\$ 350.00
ENERGY USE	549,719	\$ 0.0354	\$ 19,460.05
ELECTRIC FUEL ADJUSTMENT	549,719	\$ 0.0780	\$ 42,878.08
FLORIDA GROSS RECEIPTS TAX			\$ 1,607.39
GAINESVILLE ELEC UTIL TAX			\$ 2,141.74
<b>Subtotal for meter EGRECVM101</b>			<b>\$ 66,437.26</b>
-- GREC			
<b>Total for Electric Service Details</b>			<b>\$ 66,788.68</b>



**Gas Service Details**

Meter Number	METER READING DATES Previous	METER READING DATES Present	Meter Read Type	Days of Service	METER READINGS Previous	METER READINGS Present	Meter Multiplier	BTU Factor	Gas Consumption	Next Meter Read on or About
G17847979	04/01/2015	04/30/2015	ACTUAL	30	103184	103201	1.00000	1.02500	0 BTU	05/23/2015

Description	Usage	Rate	Amount
NATURAL GAS USE	0	\$	\$ 54.39
-- GREC			
<b>Total for Gas Service Details</b>			<b>\$ 54.39</b>

**Water and Wastewater Service Details**

Description	Usage	Rate	Amount
WASTEWATER CUSTOMER CHARGE		\$ 8.40	\$ 8.40
WASTEWATER BILLING	10	\$ 6.0500	\$ 60.50
<b>Total for Water and Wastewater Service Details</b>			<b>\$ 68.90</b>

**Customer Inquiries**

Customer Service	(352) 334-3434	Nationwide Toll-free Number	1-800-818-3436
Emergencies or Outages	(352) 334-2871	Stormwater Service	(352) 334-5070
		Solid Waste Service	(352) 334-2330

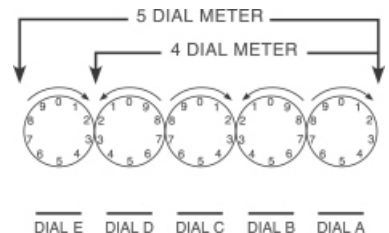
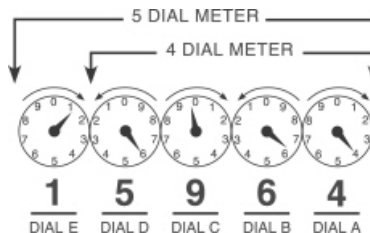
**Payment Information**

Make checks payable to **GRU**; return stub and check to: P.O. Box 147051, Gainesville, FL 32614-7051. You may also pay your bill online, by phone at 1-866-269-2881 or at a convenient location in your neighborhood. Visit [www.gru.com](http://www.gru.com) for details.

Lobby .....8 AM - 5 PM: M, T, Th, F and 9 AM - 5 PM: W  
 Drive-thru .....7:30 AM - 6 PM: M - F  
 Night depository payments will be posted the next business day if received after 3:30 PM weekdays.

**HOW TO READ YOUR METER**

Read the dials from right to left (A - E). If the dial hand is between two numbers, use the lower number.





Gainesville Regional Utilities  
301 S.E. 4 Avenue www.gru.com  
Gainesville FL 32601 352-334-3434

Account: 2000-4670-6376 Page 1 of 2  
Bill Date: 04/16/2015

GAINESVILLE RENEWABLE ENERGY CENTER PARTNER: 1000182581  
LLC 704001002049  
11201 NW US HIGHWAY 441 ROUTE: MULTIPLE  
GAINESVILLE FL 32653 NRES

Cash Security Deposit on File is \$120.00

**SUMMARY OF SERVICES**

**UTILITIES** (See reverse for details about your utility charges.)

Electric	\$\$	674.76
Gas	\$\$	31.42
Wastewater	\$\$	68.90
<b>Total Utility Charge</b>	<b>\$\$</b>	<b>775.08</b>

**TAXES AND SURCHARGES**

Florida Gross Receipts Tax	\$\$	17.30
City of Gainesville Utility Tax	\$\$	54.23
<b>Total Taxes and Surcharges</b>	<b>\$\$</b>	<b>71.53</b>

**TOTAL CURRENT MONTH CHARGES** \$ **846.61**

**ADJUSTMENTS & SERVICE CHARGES**

SECURITY DEPOSIT INTEREST	\$	-0.01
<b>TOTAL ADJUSTMENTS &amp; SERVICE CHARGES</b>	<b>\$</b>	<b>-0.01</b>

**PREVIOUS BILL ACTIVITY**

Previous Balance	\$	919.24
Payment Amount (Date: 04/01/2015)	\$\$	-919.24
<b>BALANCE FORWARD</b>	<b>\$</b>	<b>0.00</b>

**ACCOUNT SUMMARY**

Current Month Charges:	\$	846.61
Adjustments & Service Charges	\$	-0.01
Balance Forward:	\$	0.00
<b>TOTAL AMOUNT DUE</b>	<b>\$</b>	<b>846.60</b>

**DUE BY 05/06/2015**

**AVERAGE DAILY CONSUMPTION**

Service	Meter	This Month	Last Month	Last Year
DEMAND	E008239991	3.00	3.00	35.00
ELECTRIC	EGRECVM101	0.00	0.00	15651.03
ELECTRIC	E008239991	64.00	68.57	66.21
BTU GAS	G17847979	0.00	0.00	0.00
<b>AVERAGE TEMPERATURE (High/Low)</b>		<b>80/55</b>	<b>68/43</b>	<b>73/49</b>
<b>MONTHLY RAINFALL (inches)</b>		<b>1.06</b>	<b>1.87</b>	<b>5.40</b>

**SERVICE AGREEMENT:** Use or consumption of services rendered by this City shall constitute an agreement by the consumer with the City to abide by the rules of the City with regard to its utility service, including, but not limited to prevailing ordinances and policies of this City and its departments.

A 1.5% late fee will be charged for new charges not paid by 7 P.M. on your due date.

Service disconnection may result from past due balances.

**MESSAGES**

THANK YOU FOR YOUR PAYMENT

Do you want a networking solution that will grow with your business? GRUCom Fiber Optic Communications offers Internet, data transport, colocation and other telecommunications services over a reliable, all-fiber platform. For more information and a price quote, call GRUCom at 352-334-3200 or visit GRUCom.com.

Always know where utility lines are buried to avoid injury or costly repairs. Call 811 before digging to have utility lines marked. For more safety tips, visit gru.com.

Please tear off this portion and return it with your payment in the enclosed envelope.

**CHANGE OF MAILING ADDRESS**

Street: \_\_\_\_\_  
 City: \_\_\_\_\_  
 State: \_\_\_\_\_ Zip: \_\_\_\_\_  
 Telephone: \_\_\_\_\_  
 Email: \_\_\_\_\_

ACCOUNT# 2000-4670-6376

Please write account number on check and make check payable to: **GRU**

Or pay online at [www.gru.com](http://www.gru.com)

**Current month charges due by 7pm on 05/06/2015**

Payment Amount

**TOTAL AMOUNT DUE**

**\$ 846.60**

000124 BILLQ 124 T:

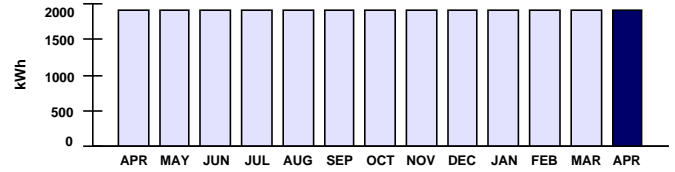
  
 GAINESVILLE RENEWABLE ENERGY CENTER LLC  
 11201 NW US HIGHWAY 441  
 GAINESVILLE FL 32653-8001

**GAINESVILLE REGIONAL UTILITIES**

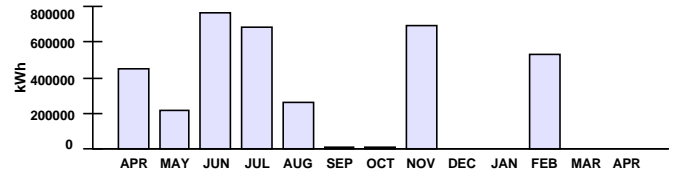
**Electric Service Details**

Meter Number	METER READING DATES Previous	METER READING DATES Present	Meter Read Type	Days of Service	METER READINGS Previous	METER READINGS Present	Meter Multiplier	Electric Consumption	Peak Demand	Next Meter Read on or About
E008239991	03/05/2015	04/03/2015	ACTUAL	30	2538	2542	480.00000	1,920 kWh	N/A	04/30/2015
EGRECV101	03/05/2015	04/03/2015	ACTUAL	30	10523225	10523225	1.00000	0 kWh	N/A	04/30/2015

Description	Usage	Rate	Amount
ELECTRIC CUSTOMER CHARGE		\$ 29.50	\$ 29.50
ENERGY USE, TIER 1 (1 - 1500 kWh)	1,500	\$ 0.0690	\$ 103.50
ENERGY USE, TIER 2 (OVER 1500 kWh)	420	\$ 0.1000	\$ 42.00
ELECTRIC FUEL ADJUSTMENT	1,920	\$ 0.0780	\$ 149.76
FLORIDA GROSS RECEIPTS TAX			\$ 8.33
GAINESVILLE ELEC UTIL TAX			\$ 18.33
<b>Subtotal for meter E008239991</b>			<b>\$ 351.42</b>
-- IC 10/14 PRIMARY METER FOR GREC			



Description	Usage	Rate	Amount
ELECTRIC CUSTOMER CHARGE		\$ 350.00	\$ 350.00
ENERGY USE	0		
FLORIDA GROSS RECEIPTS TAX			\$ 8.97
GAINESVILLE ELEC UTIL TAX			\$ 35.90
<b>Subtotal for meter EGRECV101</b>			<b>\$ 394.87</b>
-- GREC			
<b>Total for Electric Service Details</b>			<b>\$ 746.29</b>



**Gas Service Details**

Meter Number	METER READING DATES Previous	METER READING DATES Present	Meter Read Type	Days of Service	METER READINGS Previous	METER READINGS Present	Meter Multiplier	BTU Factor	Gas Consumption	Next Meter Read on or About
G17847979	03/01/2015	03/31/2015	INTERNAL	31	103163	103184	1.00000	1.02400	0 BTU	04/25/2015

Description	Usage	Rate	Amount
NATURAL GAS USE	0	\$	\$ 31.42
-- GREC			
<b>Total for Gas Service Details</b>			<b>\$ 31.42</b>

**Water and Wastewater Service Details**

Description	Usage	Rate	Amount
WASTEWATER CUSTOMER CHARGE		\$ 8.40	\$ 8.40
WASTEWATER BILLING	10	\$ 6.0500	\$ 60.50
<b>Total for Water and Wastewater Service Details</b>			<b>\$ 68.90</b>

**Customer Inquiries**

Customer Service	(352) 334-3434	Nationwide Toll-free Number	1-800-818-3436
Emergencies or Outages	(352) 334-2871	Stormwater Service	(352) 334-5070
		Solid Waste Service	(352) 334-2330

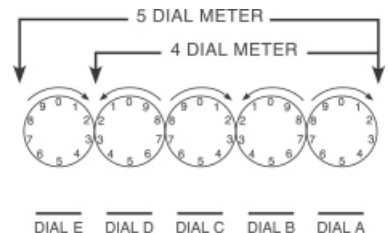
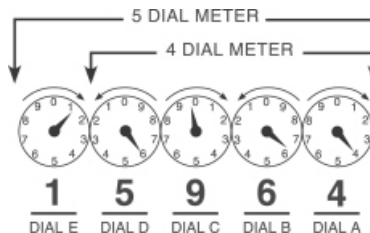
**Payment Information**

Make checks payable to **GRU**; return stub and check to: P.O. Box 147051, Gainesville, FL 32614-7051. You may also pay your bill online, by phone at 1-866-269-2881 or at a convenient location in your neighborhood. Visit [www.gru.com](http://www.gru.com) for details.

Lobby .....8 AM - 5 PM: M, T, Th, F and 9 AM - 5 PM: W  
 Drive-thru .....7:30 AM - 6 PM: M - F  
 Night depository payments will be posted the next business day if received after 3:30 PM weekdays.

**HOW TO READ YOUR METER**

Read the dials from right to left (A - E). If the dial hand is between two numbers, use the lower number.







Gainesville Regional Utilities  
301 S.E. 4 Avenue www.gru.com  
Gainesville FL 32601 352-334-3434

Account: 2000-4670-6376 Page 1 of 2  
Bill Date: 03/17/2015

GAINESVILLE RENEWABLE ENERGY CENTER PARTNER: 1000182581  
LLC 701001068503  
11201 NW US HIGHWAY 441 ROUTE: MULTIPLE  
GAINESVILLE FL 32653 NRES

Cash Security Deposit on File is \$120.00

**ACCOUNT SUMMARY**

Current Month Charges:	\$	919.25
Adjustments & Service Charges	\$	-0.01
Balance Forward:	\$	0.00
<b>TOTAL AMOUNT DUE</b>	<b>\$</b>	<b>919.24</b>

**DUE BY 04/06/2015**

**SUMMARY OF SERVICES**

**UTILITIES** (See reverse for details about your utility charges.)

Electric	\$	674.76
Gas	\$	110.11
Wastewater	\$	62.85
<b>Total Utility Charge</b>	<b>\$</b>	<b>847.72</b>

**TAXES AND SURCHARGES**

Florida Gross Receipts Tax	\$	17.30
City of Gainesville Utility Tax	\$	54.23
<b>Total Taxes and Surcharges</b>	<b>\$</b>	<b>71.53</b>

**TOTAL CURRENT MONTH CHARGES** \$ **919.25**

**ADJUSTMENTS & SERVICE CHARGES**

SECURITY DEPOSIT INTEREST	\$	-0.01
<b>TOTAL ADJUSTMENTS &amp; SERVICE CHARGES</b>	<b>\$</b>	<b>-0.01</b>

**PREVIOUS BILL ACTIVITY**

Previous Balance	\$	69,925.22
Payment Amount (Date: 03/02/2015)	\$	-69,925.22
<b>BALANCE FORWARD</b>	<b>\$</b>	<b>0.00</b>

**AVERAGE DAILY CONSUMPTION**

Service	Meter	This Month	Last Month	Last Year
DEMAND	E008239991	3.00	3.00	35.00
ELECTRIC	EGRECVM101	0.00	18275.17	2064.21
ELECTRIC	E008239991	68.57	66.21	68.57
BTU GAS	G17847979	0.00	0.00	0.00
<b>AVERAGE TEMPERATURE (High/Low)</b>		<b>68/43</b>	<b>65/40</b>	<b>69/45</b>
<b>MONTHLY RAINFALL (inches)</b>		<b>1.87</b>	<b>3.42</b>	<b>4.25</b>

**SERVICE AGREEMENT:** Use or consumption of services rendered by this City shall constitute an agreement by the consumer with the City to abide by the rules of the City with regard to its utility service, including, but not limited to prevailing ordinances and policies of this City and its departments.

A 1.5% late fee will be charged for new charges not paid by 7 P.M. on your due date.

Service disconnection may result from past due balances.

**MESSAGES**

- THANK YOU FOR YOUR PAYMENT
- Irrigation rules change during Daylight Saving Time. Businesses should irrigate on Tuesdays and Fridays. For irrigation tips and water-saving ideas visit gru.com.
- Go paperless. With eBill, you can get monthly email reminders to see your amount due, bill details and payment due date. Schedule a payment on our secure website. For details and sign up, visit gru.com/ebill.

Please tear off this portion and return it with your payment in the enclosed envelope.

**CHANGE OF MAILING ADDRESS**

Street: \_\_\_\_\_  
 City: \_\_\_\_\_  
 State: \_\_\_\_\_ Zip: \_\_\_\_\_  
 Telephone: \_\_\_\_\_  
 Email: \_\_\_\_\_

ACCOUNT# 2000-4670-6376

Please write account number on check and make check payable to: **GRU**

Or pay online at [www.gru.com](http://www.gru.com)

**Current month charges due by 7pm on 04/06/2015**

Payment Amount

**TOTAL AMOUNT DUE**

**\$ 919.24**

000044 BILLQ 44 T:

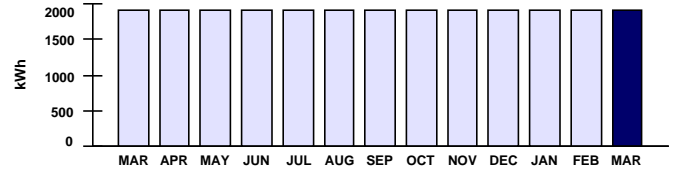
  
 GAINESVILLE RENEWABLE ENERGY CENTER LLC  
 11201 NW US HIGHWAY 441  
 GAINESVILLE FL 32653-8001

**GAINESVILLE REGIONAL UTILITIES**

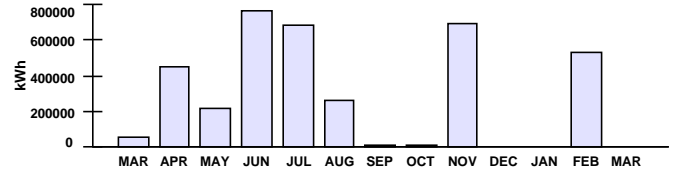
**Electric Service Details**

Meter Number	METER READING DATES Previous	METER READING DATES Present	Meter Read Type	Days of Service	METER READINGS Previous	METER READINGS Present	Meter Multiplier	Electric Consumption	Peak Demand	Next Meter Read on or About
E008239991	02/05/2015	03/04/2015	ACTUAL	28	2534	2538	480.00000	1,920 kWh	N/A	03/31/2015
EGRECVM101	02/05/2015	03/04/2015	ACTUAL	28	10523225	10523225	1.00000	0 kWh	N/A	03/31/2015

Description	Usage	Rate	Amount
ELECTRIC CUSTOMER CHARGE		\$ 29.50	\$ 29.50
ENERGY USE, TIER 1 (1 - 1500 kWh)	1,500	\$ 0.0690	\$ 103.50
ENERGY USE, TIER 2 (OVER 1500 kWh)	420	\$ 0.1000	\$ 42.00
ELECTRIC FUEL ADJUSTMENT	1,920	\$ 0.0780	\$ 149.76
FLORIDA GROSS RECEIPTS TAX			\$ 8.33
GAINESVILLE ELEC UTIL TAX			\$ 18.33
<b>Subtotal for meter E008239991</b>			<b>\$ 351.42</b>
-- IC 10/14 PRIMARY METER FOR GREC			



Description	Usage	Rate	Amount
ELECTRIC CUSTOMER CHARGE		\$ 350.00	\$ 350.00
ENERGY USE	0		
FLORIDA GROSS RECEIPTS TAX			\$ 8.97
GAINESVILLE ELEC UTIL TAX			\$ 35.90
<b>Subtotal for meter EGRECVM101</b>			<b>\$ 394.87</b>
-- GREC			
<b>Total for Electric Service Details</b>			<b>\$ 746.29</b>



**Gas Service Details**

Meter Number	METER READING DATES Previous	METER READING DATES Present	Meter Read Type	Days of Service	METER READINGS Previous	METER READINGS Present	Meter Multiplier	BTU Factor	Gas Consumption	Next Meter Read on or About
G17847979	02/01/2015	02/28/2015	ACTUAL	28	103124	103163	1.00000	1.02300	0 BTU	03/26/2015

Description	Usage	Rate	Amount
NATURAL GAS USE	0	\$	\$ 110.11
-- GREC			
<b>Total for Gas Service Details</b>			<b>\$ 110.11</b>

**Water and Wastewater Service Details**

Description	Usage	Rate	Amount
WASTEWATER CUSTOMER CHARGE		\$ 8.40	\$ 8.40
WASTEWATER BILLING	9	\$ 6.0500	\$ 54.45
<b>Total for Water and Wastewater Service Details</b>			<b>\$ 62.85</b>

**Customer Inquiries**

Customer Service	(352) 334-3434	Nationwide Toll-free Number	1-800-818-3436
Emergencies or Outages	(352) 334-2871	Stormwater Service	(352) 334-5070
		Solid Waste Service	(352) 334-2330

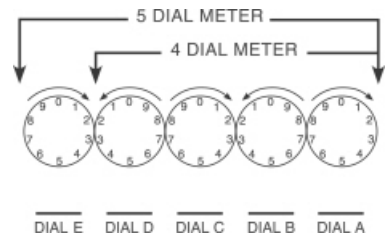
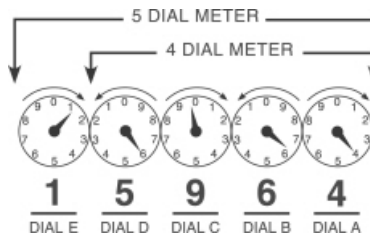
**Payment Information**

Make checks payable to **GRU**; return stub and check to: P.O. Box 147051, Gainesville, FL 32614-7051. You may also pay your bill online, by phone at 1-866-269-2881 or at a convenient location in your neighborhood. Visit [www.gru.com](http://www.gru.com) for details.

Lobby .....8 AM - 5 PM: M, T, Th, F and 9 AM - 5 PM: W  
 Drive-thru .....7:30 AM - 6 PM: M - F  
 Night depository payments will be posted the next business day if received after 3:30 PM weekdays.

**HOW TO READ YOUR METER**

Read the dials from right to left (A - E). If the dial hand is between two numbers, use the lower number.





Gainesville Regional Utilities  
301 S.E. 4 Avenue www.gru.com  
Gainesville FL 32601 352-334-3434

Account: 2000-4670-6376 Page 1 of 2  
Bill Date: 02/17/2015

GAINESVILLE RENEWABLE ENERGY CENTER PARTNER: 1000182581  
LLC 702001005532  
11201 NW US HIGHWAY 441 ROUTE: MULTIPLE  
GAINESVILLE FL 32653 NRES

Cash Security Deposit on File is \$120.00

**ACCOUNT SUMMARY**

Current Month Charges:	\$	69,925.23
Adjustments & Service Charges	\$	-0.01
Balance Forward:	\$	0.00
<b>TOTAL AMOUNT DUE</b>	<b>\$</b>	<b>69,925.22</b>

**DUE BY 03/09/2015**

**SUMMARY OF SERVICES**

**UTILITIES** (See reverse for details about your utility charges.)

Electric	\$	60,774.49
Gas	\$	5,439.06
Wastewater	\$	68.90
<b>Total Utility Charge</b>	<b>\$</b>	<b>66,282.45</b>

**TAXES AND SURCHARGES**

Florida Gross Receipts Tax	\$	1,558.32
City of Gainesville Utility Tax	\$	2,084.46
<b>Total Taxes and Surcharges</b>	<b>\$</b>	<b>3,642.78</b>

**TOTAL CURRENT MONTH CHARGES** \$ **69,925.23**

**ADJUSTMENTS & SERVICE CHARGES**

SECURITY DEPOSIT INTEREST	\$	-0.01
<b>TOTAL ADJUSTMENTS &amp; SERVICE CHARGES</b>	<b>\$</b>	<b>-0.01</b>

**PREVIOUS BILL ACTIVITY**

Previous Balance	\$	881.68
Payment Amount (Date: 01/26/2015)	\$	-881.68
<b>BALANCE FORWARD</b>	<b>\$</b>	<b>0.00</b>

**AVERAGE DAILY CONSUMPTION**

Service	Meter	This Month	Last Month	Last Year
DEMAND	E008239991	3.00	3.00	35.00
ELECTRIC	EGRECVM101	18275.17	0.00	6059.80
ELECTRIC	E008239991	66.21	56.47	64.00
BTU GAS	G17847979	0.00	0.00	0.00
BTU GAS	G17847979	0.00	0.00	0.00
<b>AVERAGE TEMPERATURE (High/Low)</b>		65/40	70/48	64/42
<b>MONTHLY RAINFALL (inches)</b>		3.42	3.46	2.65

**SERVICE AGREEMENT:** Use or consumption of services rendered by this City shall constitute an agreement by the consumer with the City to abide by the rules of the City with regard to its utility service, including, but not limited to prevailing ordinances and policies of this City and its departments.

A 1.5% late fee will be charged for new charges not paid by 7 P.M. on your due date.

Service disconnection may result from past due balances.

**MESSAGES**

CURRENT CHARGES INCLUDE CORRECTION(S) FOR PREVIOUS UTILITY CHARGES

THANK YOU FOR YOUR PAYMENT

Pay your GRU bill anytime, anywhere. Pay your bill instantly by credit card on the phone or online. Call 1-866-269-2881 or visit gru.com.

Daylight Saving Time begins in March. Adjust your programmable thermostats and check all lighting timers to be sure they are turning interior and exterior lights on and off at appropriate times.

Do you want a networking solution that will grow with your business? GRUCom Fiber Optic Communications offers Internet, data transport, colocation and other telecommunications services over a reliable, all-fiber platform. For more information and a price quote, call GRUCom at 352-334-3200 or visit GRUCom.com.

Please tear off this portion and return it with your payment in the enclosed envelope.

**CHANGE OF MAILING ADDRESS**

Street: \_\_\_\_\_  
 City: \_\_\_\_\_  
 State: \_\_\_\_\_ Zip: \_\_\_\_\_  
 Telephone: \_\_\_\_\_  
 Email: \_\_\_\_\_

ACCOUNT# 2000-4670-6376

Please write account number on check and make check payable to: **GRU**

Or pay online at [www.gru.com](http://www.gru.com)

Payment Amount

**Current month charges due by  
7pm on 03/09/2015**

**TOTAL AMOUNT DUE**

**\$ 69,925.22**

000328 BILLQ 328 T:

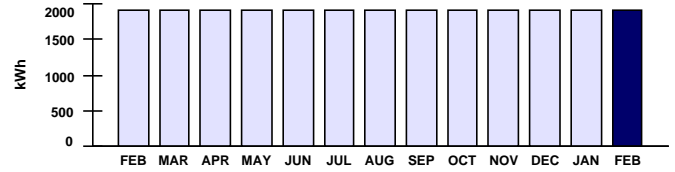
  
**GAINESVILLE RENEWABLE ENERGY CENTER LLC**  
 11201 NW US HIGHWAY 441  
 GAINESVILLE FL 32653-8001

**GAINESVILLE REGIONAL UTILITIES**

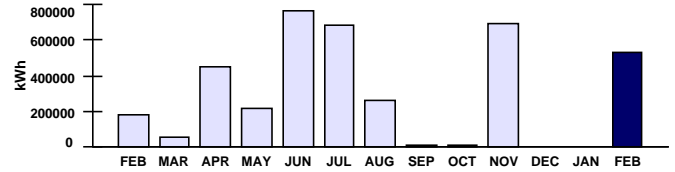
**Electric Service Details**

Meter Number	METER READING DATES Previous	METER READING DATES Present	Meter Read Type	Days of Service	METER READINGS Previous	METER READINGS Present	Meter Multiplier	Electric Consumption	Peak Demand	Next Meter Read on or About
E008239991	01/07/2015	02/04/2015	ACTUAL	29	2530	2534	480.00000	1,920 kWh	N/A	02/27/2015
EGRECVM101	01/07/2015	02/04/2015	ACTUAL	29	9993245	10523225	1.00000	529,980 kWh	N/A	02/27/2015

Description	Usage	Rate	Amount
ELECTRIC CUSTOMER CHARGE		\$ 29.50	\$ 29.50
ENERGY USE, TIER 1 (1 - 1500 kWh)	1,500	\$ 0.0690	\$ 103.50
ENERGY USE, TIER 2 (OVER 1500 kWh)	420	\$ 0.1000	\$ 42.00
ELECTRIC FUEL ADJUSTMENT	1,920	\$ 0.0780	\$ 149.76
FLORIDA GROSS RECEIPTS TAX			\$ 8.33
GAINESVILLE ELEC UTIL TAX			\$ 18.33
<b>Subtotal for meter E008239991</b>			<b>\$ 351.42</b>
-- IC 10/14 PRIMARY METER FOR GREC			



Description	Usage	Rate	Amount
ELECTRIC CUSTOMER CHARGE		\$ 350.00	\$ 350.00
ENERGY USE	529,980	\$ 0.0354	\$ 18,761.29
ELECTRIC FUEL ADJUSTMENT	529,980	\$ 0.0780	\$ 41,338.44
FLORIDA GROSS RECEIPTS TAX			\$ 1,549.99
GAINESVILLE ELEC UTIL TAX			\$ 2,066.13
<b>Subtotal for meter EGRECVM101</b>			<b>\$ 64,065.85</b>
-- GREC			
<b>Total for Electric Service Details</b>			<b>\$ 64,417.27</b>



**Gas Service Details**

Meter Number	METER READING DATES Previous	METER READING DATES Present	Meter Read Type	Days of Service	METER READINGS Previous	METER READINGS Present	Meter Multiplier	BTU Factor	Gas Consumption	Next Meter Read on or About
G17847979	01/01/2015	01/31/2015	ACTUAL	31	101485	103124	1.00000	1.02200	0 BTU	02/25/2015
G17847979	12/01/2014	12/31/2014	INTERNAL	31	101466	101485	1.00000	1.02100	0 BTU	02/25/2015

Description	Usage	Rate	Amount
NATURAL GAS USE	0	\$	\$ 5,439.06
<b>G17847979 From 01/01/2015 To 01/31/2015</b>			<b>\$ 5,439.06</b>
NATURAL GAS USE	0	\$	\$
<b>G17847979 From 12/01/2014 To 12/31/2014</b>			<b>\$</b>
-- GREC			
<b>Total for Gas Service Details</b>			<b>\$ 5,439.06</b>

**Water and Wastewater Service Details**

Description	Usage	Rate	Amount
WASTEWATER CUSTOMER CHARGE		\$ 8.40	\$ 8.40
WASTEWATER BILLING	10	\$ 6.0500	\$ 60.50
<b>Total for Water and Wastewater Service Details</b>			<b>\$ 68.90</b>

**Customer Inquiries**

Customer Service	(352) 334-3434	Nationwide Toll-free Number	1-800-818-3436
Emergencies or Outages	(352) 334-2871	Stormwater Service	(352) 334-5070
		Solid Waste Service	(352) 334-2330

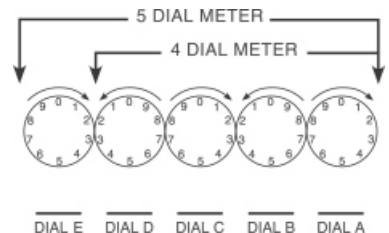
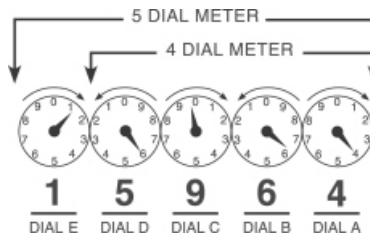
**Payment Information**

Make checks payable to **GRU**; return stub and check to: P.O. Box 147051, Gainesville, FL 32614-7051. You may also pay your bill online, by phone at 1-866-269-2881 or at a convenient location in your neighborhood. Visit [www.gru.com](http://www.gru.com) for details.

Lobby .....8 AM - 5 PM: M, T, Th, F and 9 AM - 5 PM: W  
 Drive-thru .....7:30 AM - 6 PM: M - F  
 Night depository payments will be posted the next business day if received after 3:30 PM weekdays.

**HOW TO READ YOUR METER**

Read the dials from right to left (A - E). If the dial hand is between two numbers, use the lower number.





Gainesville Regional Utilities  
301 S.E. 4 Avenue www.gru.com  
Gainesville FL 32601 352-334-3434

Account: 2000-4670-6376 Page 1 of 2  
Bill Date: 01/16/2015

GAINESVILLE RENEWABLE ENERGY CENTER PARTNER: 1000182581  
LLC 707000924127  
11201 NW US HIGHWAY 441 ROUTE: MULTIPLE  
GAINESVILLE FL 32653 NRES

Cash Security Deposit on File is \$120.00

**ACCOUNT SUMMARY**

Current Month Charges:	\$	881.69
Adjustments & Service Charges	\$	-0.01
Balance Forward:	\$	0.00
<b>TOTAL AMOUNT DUE</b>	<b>\$</b>	<b>881.68</b>

**DUE BY 02/05/2015**

**SUMMARY OF SERVICES**

**UTILITIES** (See reverse for details about your utility charges.)

Electric	\$\$	674.76
Gas	\$\$	54.40
Wastewater	\$\$	81.00
<b>Total Utility Charge</b>	<b>\$\$</b>	<b>810.16</b>

**TAXES AND SURCHARGES**

Florida Gross Receipts Tax	\$\$	17.30
City of Gainesville Utility Tax	\$\$	54.23
<b>Total Taxes and Surcharges</b>	<b>\$\$</b>	<b>71.53</b>

**TOTAL CURRENT MONTH CHARGES** \$ **881.69**

**ADJUSTMENTS & SERVICE CHARGES**

SECURITY DEPOSIT INTEREST	\$	-0.01
<b>TOTAL ADJUSTMENTS &amp; SERVICE CHARGES</b>	<b>\$</b>	<b>-0.01</b>

**PREVIOUS BILL ACTIVITY**

Previous Balance	\$	899.30
Payment Amount (Date: 01/02/2015)	\$\$	-899.30
<b>BALANCE FORWARD</b>	<b>\$</b>	<b>0.00</b>

**AVERAGE DAILY CONSUMPTION**

Service	Meter	This Month	Last Month	Last Year
DEMAND	E008239991	3.00	3.00	38.00
ELECTRIC	EGRECVM101	0.00	0.00	15471.45
ELECTRIC	E008239991	56.47	66.21	116.36
BTU GAS	G17847979	0.00	0.00	0.00
<b>AVERAGE TEMPERATURE (High/Low)</b>		<b>70/48</b>	<b>72/46</b>	<b>71/47</b>
<b>MONTHLY RAINFALL (inches)</b>		<b>3.46</b>	<b>2.47</b>	<b>6.56</b>

**SERVICE AGREEMENT:** Use or consumption of services rendered by this City shall constitute an agreement by the consumer with the City to abide by the rules of the City with regard to its utility service, including, but not limited to prevailing ordinances and policies of this City and its departments.  
A 1.5% late fee will be charged for new charges not paid by 7 P.M. on your due date.  
Service disconnection may result from past due balances.

**MESSAGES**

THANK YOU FOR YOUR PAYMENT

GRU's Conservation Services team can help your business find ways to save money, improve comfort, and review your rate. Our trained staff will inspect your business at no charge. Call 352-393-1460 to schedule a survey.

Please tear off this portion and return it with your payment in the enclosed envelope.

**CHANGE OF MAILING ADDRESS**

Street: \_\_\_\_\_  
 City: \_\_\_\_\_  
 State: \_\_\_\_\_ Zip: \_\_\_\_\_  
 Telephone: \_\_\_\_\_  
 Email: \_\_\_\_\_

ACCOUNT# 2000-4670-6376

Please write account number on check and make check payable to: **GRU**

Or pay online at [www.gru.com](http://www.gru.com)

**Current month charges due by 7pm on 02/05/2015**

Payment Amount

**TOTAL AMOUNT DUE**

**\$ 881.68**

000260 BILLQ 260 T:

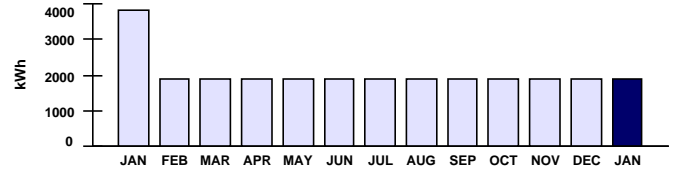
  
GAINESVILLE RENEWABLE ENERGY CENTER LLC  
11201 NW US HIGHWAY 441  
GAINESVILLE FL 32653-8001

**GAINESVILLE REGIONAL UTILITIES**

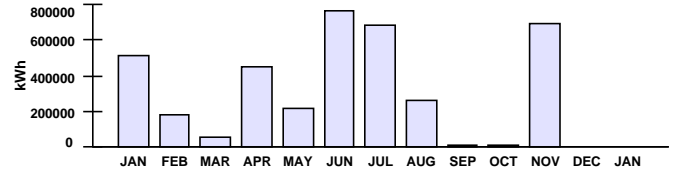
**Electric Service Details**

Meter Number	METER READING DATES Previous	METER READING DATES Present	Meter Read Type	Days of Service	METER READINGS Previous	METER READINGS Present	Meter Multiplier	Electric Consumption	Peak Demand	Next Meter Read on or About
E008239991	12/04/2014	01/06/2015	ACTUAL	34	2526	2530	480.00000	1,920 kWh	N/A	01/30/2015
EGRECVM101	12/04/2014	01/06/2015	ACTUAL	34	9993245	9993245	1.00000	0 kWh	N/A	01/30/2015

Description	Usage	Rate	Amount
ELECTRIC CUSTOMER CHARGE		\$ 29.50	\$ 29.50
ENERGY USE, TIER 1 (1 - 1500 kWh)	1,500	\$ 0.0690	\$ 103.50
ENERGY USE, TIER 2 (OVER 1500 kWh)	420	\$ 0.1000	\$ 42.00
ELECTRIC FUEL ADJUSTMENT	1,920	\$ 0.0780	\$ 149.76
FLORIDA GROSS RECEIPTS TAX			\$ 8.33
GAINESVILLE ELEC UTIL TAX			\$ 18.33
<b>Subtotal for meter E008239991</b>			<b>\$ 351.42</b>
-- IC 10/14 PRIMARY METER FOR GREC			



Description	Usage	Rate	Amount
ELECTRIC CUSTOMER CHARGE		\$ 350.00	\$ 350.00
ENERGY USE	0		\$ 8.97
FLORIDA GROSS RECEIPTS TAX			\$ 35.90
GAINESVILLE ELEC UTIL TAX			\$ 394.87
<b>Subtotal for meter EGRECVM101</b>			<b>\$ 394.87</b>
-- GREC			
<b>Total for Electric Service Details</b>			<b>\$ 746.29</b>



**Gas Service Details**

Meter Number	METER READING DATES Previous	METER READING DATES Present	Meter Read Type	Days of Service	METER READINGS Previous	METER READINGS Present	Meter Multiplier	BTU Factor	Gas Consumption	Next Meter Read on or About
G17847979	12/01/2014	12/31/2014	ESTIMATED	31	101466	103615	1.00000	1.02100	0 BTU	01/28/2015

Description	Usage	Rate	Amount
NATURAL GAS USE	0	\$	\$ 54.40
-- GREC			
<b>Total for Gas Service Details</b>			<b>\$ 54.40</b>

**Water and Wastewater Service Details**

Description	Usage	Rate	Amount
WASTEWATER CUSTOMER CHARGE		\$ 8.40	\$ 8.40
WASTEWATER BILLING	12	\$ 6.0500	\$ 72.60
<b>Total for Water and Wastewater Service Details</b>			<b>\$ 81.00</b>

**Customer Inquiries**

Customer Service	(352) 334-3434	Nationwide Toll-free Number	1-800-818-3436
Emergencies or Outages	(352) 334-2871	Stormwater Service	(352) 334-5070
		Solid Waste Service	(352) 334-2330

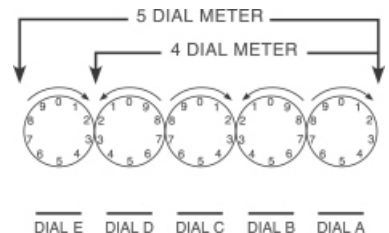
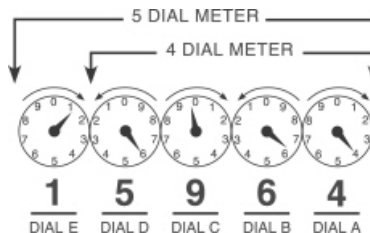
**Payment Information**

Make checks payable to **GRU**; return stub and check to: P.O. Box 147051, Gainesville, FL 32614-7051. You may also pay your bill online, by phone at 1-866-269-2881 or at a convenient location in your neighborhood. Visit [www.gru.com](http://www.gru.com) for details.

Lobby .....8 AM - 5 PM: M, T, Th, F and 9 AM - 5 PM: W  
 Drive-thru .....7:30 AM - 6 PM: M - F  
 Night depository payments will be posted the next business day if received after 3:30 PM weekdays.

**HOW TO READ YOUR METER**

Read the dials from right to left (A - E). If the dial hand is between two numbers, use the lower number.





Gainesville Regional Utilities  
301 S.E. 4 Avenue www.gru.com  
Gainesville FL 32601 352-334-3434

Account: 2000-4670-6376 Page 1 of 2  
Bill Date: 12/18/2014

GAINESVILLE RENEWABLE ENERGY CENTER PARTNER: 1000182581  
LLC 708000895599  
11201 NW US HIGHWAY 441 ROUTE: MULTIPLE  
GAINESVILLE FL 32653 NRES

Cash Security Deposit on File is \$120.00

**ACCOUNT SUMMARY**

Current Month Charges:	\$	899.31
Adjustments & Service Charges	\$	-1.01
Balance Forward:	\$	1.00
<b>TOTAL AMOUNT DUE</b>	<b>\$</b>	<b>899.30</b>

**DUE BY 01/07/2015**

**SUMMARY OF SERVICES**

**UTILITIES** (See reverse for details about your utility charges.)

Electric	\$	674.76
Gas	\$	96.22
Wastewater	\$	56.80
<b>Total Utility Charge</b>	<b>\$</b>	<b>827.78</b>

**TAXES AND SURCHARGES**

Florida Gross Receipts Tax	\$	17.30
City of Gainesville Utility Tax	\$	54.23
<b>Total Taxes and Surcharges</b>	<b>\$</b>	<b>71.53</b>

**TOTAL CURRENT MONTH CHARGES** \$ **899.31**

**ADJUSTMENTS & SERVICE CHARGES**

REVERSED LATE FEE	\$	-1.00
SECURITY DEPOSIT INTEREST	\$	-0.01
<b>TOTAL ADJUSTMENTS &amp; SERVICE CHARGES</b>	<b>\$</b>	<b>-1.01</b>

**PREVIOUS BILL ACTIVITY**

Previous Balance	\$	98,586.99
Payment Amount (Date: 11/25/2014)	\$	-98,585.99
<b>BALANCE FORWARD</b>	<b>\$</b>	<b>1.00</b>

**AVERAGE DAILY CONSUMPTION**

Service	Meter	This Month	Last Month	Last Year
DEMAND	E008239991	3.00	35.00	80.00
ELECTRIC	EGRECVM101	0.00	21602.13	26597.66
ELECTRIC	E008239991	66.21	60.00	480.00
BTU GAS	G17847979	0.00	0.00	0.00
<b>AVERAGE TEMPERATURE (High/Low)</b>		<b>72/46</b>	<b>80/54</b>	<b>75/53</b>
<b>MONTHLY RAINFALL (inches)</b>		<b>2.47</b>	<b>1.32</b>	<b>2.05</b>

**SERVICE AGREEMENT:** Use or consumption of services rendered by this City shall constitute an agreement by the consumer with the City to abide by the rules of the City with regard to its utility service, including, but not limited to prevailing ordinances and policies of this City and its departments.  
 A 1.5% late fee will be charged for new charges not paid by 7 P.M. on your due date.  
 Service disconnection may result from past due balances.

**MESSAGES**

THANK YOU FOR YOUR PAYMENT

If you smell natural gas at your business, leave the area immediately. Then call GRU at 352-334-2550 to report the problem. Natural gas contains a chemical that smells like rotten eggs to help you detect a possible leak. In an emergency situation, such as a business filling with gas, call 911.

Energy tip: Appropriately sized timers will help you control your lights when your business is closed. Don't leave holiday lights on overnight. It's safest to turn them off when you leave the premises.

Please tear off this portion and return it with your payment in the enclosed envelope.

**CHANGE OF MAILING ADDRESS**

Street: \_\_\_\_\_  
 City: \_\_\_\_\_  
 State: \_\_\_\_\_ Zip: \_\_\_\_\_  
 Telephone: \_\_\_\_\_  
 Email: \_\_\_\_\_

000032 BILLQ 32 T:

  
**GAINESVILLE RENEWABLE ENERGY CENTER LLC**  
 11201 NW US HIGHWAY 441  
 GAINESVILLE FL 32653-8001

ACCOUNT# 2000-4670-6376

Please write account number on check and make check payable to: **GRU** Payment Amount

Or pay online at [www.gru.com](http://www.gru.com)

**Current month charges due by 7pm on 01/07/2015**

**TOTAL AMOUNT DUE**

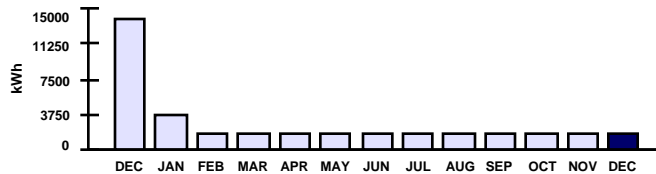
**\$ 899.30**

**GAINESVILLE REGIONAL UTILITIES**

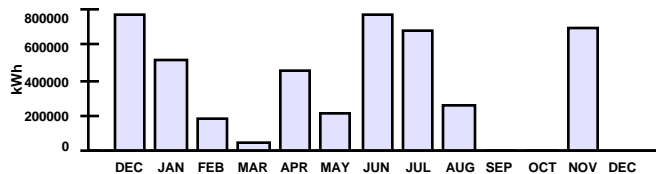
**Electric Service Details**

Meter Number	METER READING DATES Previous	METER READING DATES Present	Meter Read Type	Days of Service	METER READINGS Previous	METER READINGS Present	Meter Multiplier	Electric Consumption	Peak Demand	Next Meter Read on or About
E008239991	11/05/2014	12/03/2014	ACTUAL	29	2522	2526	480.0000	1,920 kWh	N/A	12/31/2014
EGRECV101	11/05/2014	12/03/2014	ACTUAL	29	9993245	9993245	1.00000	0 kWh	N/A	12/31/2014

Description	Usage	Rate	Amount Billed
ELECTRIC CUSTOMER CHARGE		\$ 29.50	\$ 29.50
ENERGY USE, TIER 1 (1 - 1500 kWh)	1,500	\$ 0.0690	\$ 103.50
ENERGY USE, TIER 2 (OVER 1500 kWh)	420	\$ 0.1000	\$ 42.00
ELECTRIC FUEL ADJUSTMENT	1,920	\$ 0.0780	\$ 149.76
FLORIDA GROSS RECEIPTS TAX			\$ 8.33
GAINESVILLE ELEC UTIL TAX			\$ 18.33
<b>Subtotal for meter E008239991</b>			<b>\$ 351.42</b>
-- IC 10/14 PRIMARY METER FOR GREC			



Description	Usage	Rate	Amount Billed
ELECTRIC CUSTOMER CHARGE		\$ 350.00	\$ 350.00
ENERGY USE	0		
FLORIDA GROSS RECEIPTS TAX			\$ 8.97
GAINESVILLE ELEC UTIL TAX			\$ 35.90
<b>Subtotal for meter EGRECV101</b>			<b>\$ 394.87</b>
-- GREC			
<b>Total for Electric Service Details</b>			<b>\$ 746.29</b>



**Gas Service Details**

Meter Number	METER READING DATES Previous	METER READING DATES Present	Meter Read Type	Days of Service	METER READINGS Previous	METER READINGS Present	Meter Multiplier	BTU Factor	Gas Consumption	Next Meter Read on or About
G17847979	11/01/2014	11/30/2014	ACTUAL	30	101422	101466	1.00000	1.02000	0 BTU	12/24/2014

Description	Usage	Rate	Amount Billed
NATURAL GAS USE	0		\$ 96.22
-- GREC			
<b>Total for Gas Service Details</b>			<b>\$ 96.22</b>

**Water and Wastewater Service Details**

Description	Usage	Rate	Amount Billed
WASTEWATER CUSTOMER CHARGE		\$ 8.40	\$ 8.40
WASTEWATER BILLING	8	\$ 6.0500	\$ 48.40
<b>Total for Water and Wastewater Service Details</b>			<b>\$ 56.80</b>

**Customer Inquiries**

Customer Service	(352) 334-3434	Nationwide Toll-free Number	1-800-818-3436
Emergencies or Outages	(352) 334-2871	Stormwater Service	(352) 334-5070
		Solid Waste Service	(352) 334-2330

**Payment Information**

Make checks payable to GRU, return stub and check to: P.O. Box 147051, Gainesville, FL 32614-7051. You may also pay your bill online, by phone at 1-866-269-2881 or at a convenient location in your neighborhood. Visit [www.gru.com](http://www.gru.com) for details.

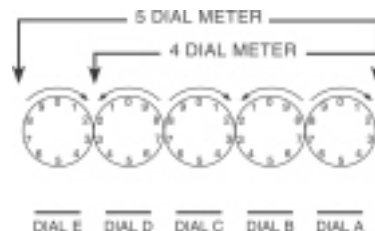
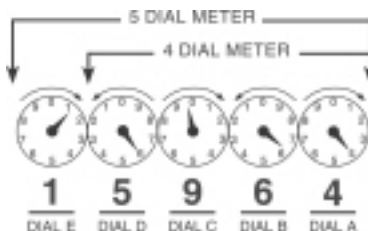
Lobby .....8 AM - 5 PM: M, T, Th, F and 9 AM - 5 PM: W

Drive-thru .....7:30 AM - 6 PM: M - F

Night depository payments will be posted the next business day if received after 3:30 PM weekdays.

**HOW TO READ YOUR METER**

Read the dials from right to left (A - E). If the dial hand is between two numbers, use the lower number.







Gainesville Regional Utilities  
301 S.E. 4 Avenue www.gru.com  
Gainesville FL 32601 352-334-3434

Account: 2000-4670-6376 Page 1 of 2  
Bill Date: 11/17/2014

GAINESVILLE RENEWABLE ENERGY CENTER PARTNER: 1000182581  
LLC 704000950297  
11201 NW US HIGHWAY 441 ROUTE: MULTIPLE  
GAINESVILLE FL 32653 NRES

Cash Security Deposit on File is \$120.00

**SUMMARY OF SERVICES**

**UTILITIES** (See reverse for details about your utility charges.)

Electric	\$	79,363.84
Gas	\$	14,319.07
Wastewater	\$	81.00
<b>Total Utility Charge</b>	\$	<b>93,763.91</b>

**TAXES AND SURCHARGES**

Florida Gross Receipts Tax	\$	2,034.97
City of Gainesville Utility Tax	\$	2,733.02
<b>Total Taxes and Surcharges</b>	\$	<b>4,767.99</b>

**TOTAL CURRENT MONTH CHARGES** \$ **98,531.90**

**ADJUSTMENTS & SERVICE CHARGES**

LATE FEE	\$	1.00
SECURITY DEPOSIT INTEREST	\$	-0.01
<b>TOTAL ADJUSTMENTS &amp; SERVICE CHARGES</b>	\$	<b>0.99</b>

**PREVIOUS BILL ACTIVITY**

Previous Balance	\$	3,383.84
Payment Amount (Date: 11/04/2014)	\$	-3,329.74
<b>BALANCE FORWARD</b>	\$	<b>54.10</b>

**ACCOUNT SUMMARY**

Current Month Charges:	\$	98,531.90	<b>DUE BY 12/07/2014</b>
Adjustments & Service Charges	\$	0.99	
Balance Forward:	\$	54.10	<b>PAST DUE</b>
<b>TOTAL AMOUNT DUE</b>	\$	<b>98,586.99</b>	

**AVERAGE DAILY CONSUMPTION**

Service	Meter	This Month	Last Month	Last Year
DEMAND	E008239991	35.00	35.00	52.00
ELECTRIC	E008239991	60.00	66.21	432.00
ELECTRIC	EGRECV101	21602.13	316.62	10287.39
BTU GAS	G17847979	0.00	0.00	0.00
<b>AVERAGE TEMPERATURE (High/Low)</b>		<b>80/54</b>	<b>86/70</b>	<b>81/57</b>
<b>MONTHLY RAINFALL (inches)</b>		<b>1.32</b>	<b>6.70</b>	<b>1.29</b>

**SERVICE AGREEMENT:** Use or consumption of services rendered by this City shall constitute an agreement by the consumer with the City to abide by the rules of the City with regard to its utility service, including, but not limited to prevailing ordinances and policies of this City and its departments. A 1.5% late fee will be charged for new charges not paid by 7 P.M. on your due date. Service disconnection may result from past due balances.

**MESSAGES**

- Irrigation rules change during Eastern Standard Time. Businesses should irrigate only on Tuesdays. For irrigation tips and water rebate programs visit gru.com.
- Have a qualified technician test, clean and adjust your heating equipment to increase efficiency and save money. This typically includes replacing dirty air filters; cleaning blower coils and heat exchanger surfaces; and adjusting belt drives, damper valves and linkages.

Please tear off this portion and return it with your payment in the enclosed envelope.

**CHANGE OF MAILING ADDRESS**

Street: \_\_\_\_\_  
 City: \_\_\_\_\_  
 State: \_\_\_\_\_ Zip: \_\_\_\_\_  
 Telephone: \_\_\_\_\_  
 Email: \_\_\_\_\_

000679 BILLQ 679 T:

  
**GAINESVILLE RENEWABLE ENERGY CENTER LLC**  
 11201 NW US HIGHWAY 441  
 GAINESVILLE FL 32653-8001

ACCOUNT# 2000-4670-6376

Please write account number on check and make check payable to: **GRU**

Payment Amount

Or pay online at [www.gru.com](http://www.gru.com)

**Current month charges due by 7pm on 12/07/2014**

**TOTAL AMOUNT DUE**

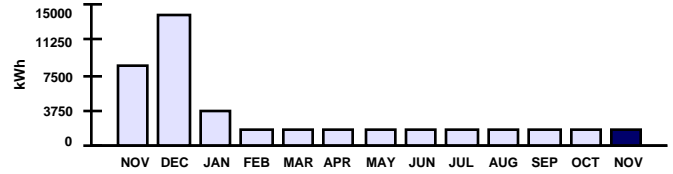
**\$ 98,586.99**

**GAINESVILLE REGIONAL UTILITIES**

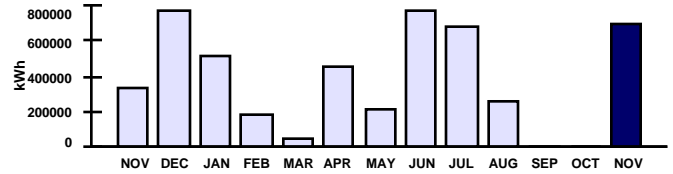
**Electric Service Details**

Meter Number	METER READING DATES Previous	METER READING DATES Present	Meter Read Type	Days of Service	METER READINGS Previous	METER READINGS Present	Meter Multiplier	Electric Consumption	Peak Demand	Next Meter Read on or About
E008239991	10/04/2014	11/04/2014	ACTUAL	32	2518	2522	480.0000	1,920 kWh	35 kW	11/26/2014
EGRECV101	10/04/2014	11/04/2014	ACTUAL	32	9301977	9993245	1.00000	691,268 kWh	N/A	11/26/2014

Description	Usage	Rate	Amount Billed
ELECTRIC CUSTOMER CHARGE		\$ 100.00	\$ 100.00
ENERGY USE	1,920	\$ 0.0400	\$ 76.79
ELECTRIC DEMAND	35	\$ 8.5000	\$ 297.50
ELECTRIC FUEL ADJUSTMENT	1,920	\$ 0.0780	\$ 149.76
FLORIDA GROSS RECEIPTS TAX			\$ 16.00
GAINESVILLE ELEC UTIL TAX			\$ 49.03
<b>Subtotal for meter E008239991</b>			<b>\$ 689.08</b>
-- IC 10/14 PRIMARY METER FOR GREC			



Description	Usage	Rate	Amount Billed
ELECTRIC CUSTOMER CHARGE		\$ 350.00	\$ 350.00
ENERGY USE	691,268	\$ 0.0354	\$ 24,470.89
ELECTRIC FUEL ADJUSTMENT	691,268	\$ 0.0780	\$ 53,918.90
FLORIDA GROSS RECEIPTS TAX			\$ 2,018.97
GAINESVILLE ELEC UTIL TAX			\$ 2,683.99
<b>Subtotal for meter EGRECV101</b>			<b>\$ 83,442.75</b>
-- GREC			
<b>Total for Electric Service Details</b>			<b>\$ 84,131.83</b>



**Gas Service Details**

Meter Number	METER READING DATES Previous	METER READING DATES Present	Meter Read Type	Days of Service	METER READINGS Previous	METER READINGS Present	Meter Multiplier	BTU Factor	Gas Consumption	Next Meter Read on or About
G17847979	10/01/2014	10/31/2014	ACTUAL	31	98523	101422	1.00000	1.02000	0 BTU	11/22/2014

Description	Usage	Rate	Amount Billed
NATURAL GAS USE	0	\$ 14,319.07	\$ 14,319.07
<b>Total for Gas Service Details</b>			<b>\$ 14,319.07</b>

**Water and Wastewater Service Details**

Description	Usage	Rate	Amount Billed
WASTEWATER CUSTOMER CHARGE		\$ 8.40	\$ 8.40
WASTEWATER BILLING	12	\$ 6.0500	\$ 72.60
<b>Total for Water and Wastewater Service Details</b>			<b>\$ 81.00</b>

**Customer Inquiries**

Customer Service	(352) 334-3434	Nationwide Toll-free Number	1-800-818-3436
Emergencies or Outages	(352) 334-2871	Stormwater Service	(352) 334-5070
		Solid Waste Service	(352) 334-2330

**Payment Information**

Make checks payable to GRU; return stub and check to: P.O. Box 147051, Gainesville, FL 32614-7051. You may also pay your bill online, by phone at 1-866-269-2881 or at a convenient location in your neighborhood. Visit [www.gru.com](http://www.gru.com) for details.

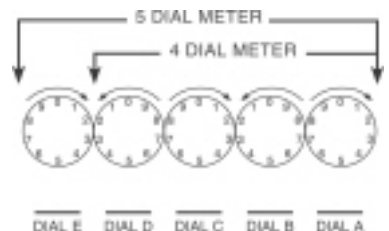
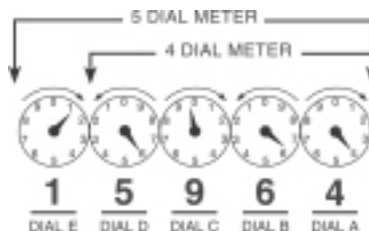
Lobby .....8 AM - 5 PM: M, T, Th, F and 9 AM - 5 PM: W

Drive-thru .....7:30 AM - 6 PM: M - F

Night depository payments will be posted the next business day if received after 3:30 PM weekdays.

**HOW TO READ YOUR METER**

Read the dials from right to left (A - E). If the dial hand is between two numbers, use the lower number.





Gainesville Regional Utilities  
301 S.E. 4 Avenue www.gru.com  
Gainesville FL 32601 352-334-3434

Account: 2000-4670-6376 Page 1 of 2  
Bill Date: 10/17/2014

GAINESVILLE RENEWABLE ENERGY CENTER PARTNER: 1000182581  
LLC 703000955545  
11201 NW US HIGHWAY 441 ROUTE: MULTIPLE  
GAINESVILLE FL 32653 NRES

Cash Security Deposit on File is \$120.00

ACCOUNT SUMMARY		
Current Month Charges:	\$	3,383.84
Adjustments & Service Charges	\$	0.00
Balance Forward:	\$	0.00
<b>TOTAL AMOUNT DUE</b>	<b>\$</b>	<b>3,383.84</b>

**DUE BY 11/06/2014**

**SUMMARY OF SERVICES**

**UTILITIES** (See reverse for details about your utility charges.)

Electric	\$	2,015.29
Gas	\$	1,133.93
Wastewater	\$	62.85
<b>Total Utility Charge</b>	<b>\$</b>	<b>3,212.07</b>

**TAXES AND SURCHARGES**

Florida Gross Receipts Tax	\$	51.67
City of Gainesville Utility Tax	\$	120.10
<b>Total Taxes and Surcharges</b>	<b>\$</b>	<b>171.77</b>
<b>TOTAL CURRENT MONTH CHARGES</b>	<b>\$</b>	<b>3,383.84</b>

**PREVIOUS BILL ACTIVITY**

Previous Balance	\$	2,430.80
Payment Amount (Date: 10/01/2014)	\$	-2,430.80
<b>BALANCE FORWARD</b>	<b>\$</b>	<b>0.00</b>

**AVERAGE DAILY CONSUMPTION**

Service	Meter	This Month	Last Month	Last Year
DEMAND	E008239991	35.00	35.00	335.00
ELECTRIC	E008239991	66.21	64.00	948.29
ELECTRIC	EGRECV101	316.62	335.90	35518.89
BTU GAS	G17847979	0.00	0.00	0.00
<b>AVERAGE TEMPERATURE (High/Low)</b>		<b>86/70</b>	<b>92/72</b>	<b>87/66</b>
<b>MONTHLY RAINFALL (inches)</b>		<b>6.70</b>	<b>5.72</b>	<b>2.92</b>

**SERVICE AGREEMENT:** Use or consumption of services rendered by this City shall constitute an agreement by the consumer with the City to abide by the rules of the City with regard to its utility service, including, but not limited to prevailing ordinances and policies of this City and its departments.  
 A 1.5% late fee will be charged for new charges not paid by 7 P.M. on your due date.  
 Service disconnection may result from past due balances.

**MESSAGES**

- THANK YOU FOR YOUR PAYMENT
- Fat, Oil and Grease (FOG) poured into drains can cause back-ups and sewage spills. Don't pour FOG down drains or garbage disposals. Pour FOG into closed containers such as coffee cans and dispose of it in garbage bins. Visit gru.com for more information.
  - Daylight Saving Time ends in November. Adjust your programmable thermostats and check all lighting timers to be sure they are turning interior and exterior lights on and off at appropriate times.

Please tear off this portion and return it with your payment in the enclosed envelope.

**CHANGE OF MAILING ADDRESS**

Street: \_\_\_\_\_  
 City: \_\_\_\_\_  
 State: \_\_\_\_\_ Zip: \_\_\_\_\_  
 Telephone: \_\_\_\_\_  
 Email: \_\_\_\_\_

ACCOUNT# 2000-4670-6376

Please write account number on check and make check payable to: **GRU** Payment Amount

Or pay online at [www.gru.com](http://www.gru.com)

**Current month charges due by 7pm on 11/06/2014**

<b>TOTAL AMOUNT DUE</b>
<b>\$ 3,383.84</b>

000066 BILLQ 66 T:

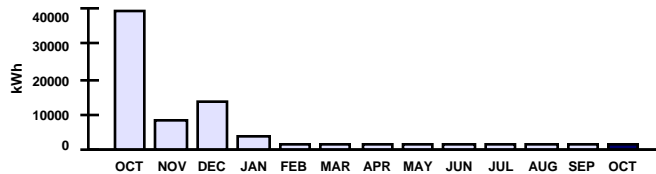
  
 GAINESVILLE RENEWABLE ENERGY CENTER LLC  
 11201 NW US HIGHWAY 441  
 GAINESVILLE FL 32653-8001

**GAINESVILLE REGIONAL UTILITIES**

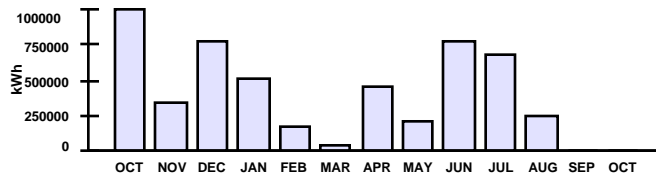
**Electric Service Details**

Meter Number	METER READING DATES Previous	METER READING DATES Present	Meter Read Type	Days of Service	METER READINGS Previous	METER READINGS Present	Meter Multiplier	Electric Consumption	Peak Demand	Next Meter Read on or About
E008239991	09/05/2014	10/03/2014	ACTUAL	29	2514	2518	480.0000	1,920 kWh	35 kW	10/30/2014
EGRECV101	09/05/2014	10/03/2014	ACTUAL	29	9292795	9301977	1.00000	9,182 kWh	N/A	10/30/2014

Description	Usage	Rate	Amount Billed
ELECTRIC CUSTOMER CHARGE		\$ 100.00	\$ 100.00
ENERGY USE	1,920	\$ 0.0400	\$ 76.79
ELECTRIC DEMAND	35	\$ 8.5000	\$ 297.50
ELECTRIC FUEL ADJUSTMENT	1,920	\$ 0.0780	\$ 149.76
FLORIDA GROSS RECEIPTS TAX			\$ 16.00
GAINESVILLE ELEC UTIL TAX			\$ 49.03
<b>Subtotal for meter E008239991</b>			<b>\$ 689.08</b>
-- IC 10/13 PRIMARY METER FOR GREC			



Description	Usage	Rate	Amount Billed
ELECTRIC CUSTOMER CHARGE		\$ 350.00	\$ 350.00
ENERGY USE	9,182	\$ 0.0354	\$ 325.04
ELECTRIC FUEL ADJUSTMENT	9,182	\$ 0.0780	\$ 716.20
FLORIDA GROSS RECEIPTS TAX			\$ 35.67
GAINESVILLE ELEC UTIL TAX			\$ 71.07
<b>Subtotal for meter EGRECV101</b>			<b>\$ 1,497.98</b>
-- GREC			
<b>Total for Electric Service Details</b>			<b>\$ 2,187.06</b>



**Gas Service Details**

Meter Number	METER READING DATES Previous	METER READING DATES Present	Meter Read Type	Days of Service	METER READINGS Previous	METER READINGS Present	Meter Multiplier	BTU Factor	Gas Consumption	Next Meter Read on or About
G17847979	09/01/2014	09/30/2014	ACTUAL	30	98373	98523	1.00000	1.01900	0 BTU	10/28/2014

Description	Usage	Rate	Amount Billed
NATURAL GAS USE	0	\$	\$ 1,133.93
<b>Total for Gas Service Details</b>			<b>\$ 1,133.93</b>

**Water and Wastewater Service Details**

Description	Usage	Rate	Amount Billed
WASTEWATER CUSTOMER CHARGE		\$ 8.40	\$ 8.40
WASTEWATER BILLING	9	\$ 6.0500	\$ 54.45
<b>Total for Water and Wastewater Service Details</b>			<b>\$ 62.85</b>

**Customer Inquiries**

Customer Service	(352) 334-3434	Nationwide Toll-free Number	1-800-818-3436
Emergencies or Outages	(352) 334-2871	Stormwater Service	(352) 334-5070
		Solid Waste Service	(352) 334-2330

**Payment Information**

Make checks payable to GRU; return stub and check to: P.O. Box 147051, Gainesville, FL 32614-7051. You may also pay your bill online, by phone at 1-866-269-2881 or at a convenient location in your neighborhood. Visit [www.gru.com](http://www.gru.com) for details.

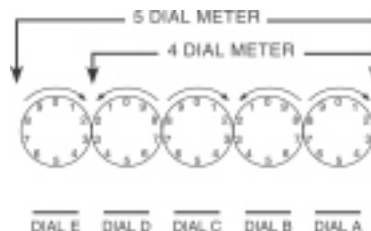
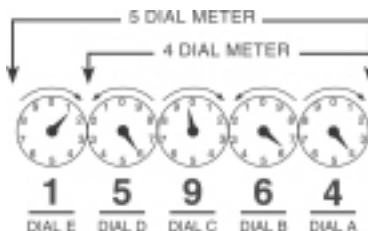
Lobby .....8 AM - 5 PM: M, T, Th, F and 9 AM - 5 PM: W

Drive-thru .....7:30 AM - 6 PM: M - F

Night depository payments will be posted the next business day if received after 3:30 PM weekdays.

**HOW TO READ YOUR METER**

Read the dials from right to left (A - E). If the dial hand is between two numbers, use the lower number.





Gainesville Regional Utilities  
301 S.E. 4 Avenue www.gru.com  
Gainesville FL 32601 352-334-3434

Account: 2000-4670-6376 Page 1 of 2  
Bill Date: 09/17/2014

GAINESVILLE RENEWABLE ENERGY CENTER PARTNER: 1000182581  
LLC 703000944847  
11201 NW US HIGHWAY 441 ROUTE: MULTIPLE  
GAINESVILLE FL 32653 NRES

Cash Security Deposit on File is \$120.00

ACCOUNT SUMMARY		
Current Month Charges:	\$	2,430.81
Adjustments & Service Charges	\$	-0.01
Balance Forward:	\$	0.00
<b>TOTAL AMOUNT DUE</b>	<b>\$</b>	<b>2,430.80</b>

**DUE BY 10/07/2014**

**SUMMARY OF SERVICES**

**UTILITIES** (See reverse for details about your utility charges.)

Electric	\$	2,077.92
Gas	\$	102.92
Wastewater	\$	66.35
<b>Total Utility Charge</b>	<b>\$</b>	<b>2,247.19</b>

**TAXES AND SURCHARGES**

Florida Gross Receipts Tax	\$	53.28
City of Gainesville Utility Tax	\$	130.34
<b>Total Taxes and Surcharges</b>	<b>\$</b>	<b>183.62</b>
<b>TOTAL CURRENT MONTH CHARGES</b>	<b>\$</b>	<b>2,430.81</b>

**ADJUSTMENTS & SERVICE CHARGES**

SECURITY DEPOSIT INTEREST	\$	-0.01
<b>TOTAL ADJUSTMENTS &amp; SERVICE CHARGES</b>	<b>\$</b>	<b>-0.01</b>

**PREVIOUS BILL ACTIVITY**

Previous Balance	\$	40,956.80
Payment Amount (Date: 09/02/2014)	\$	-40,956.80
<b>BALANCE FORWARD</b>	<b>\$</b>	<b>0.00</b>

**AVERAGE DAILY CONSUMPTION**

Service	Meter	This Month	Last Month	Last Year
DEMAND	E008239991	35.00	35.00	130.00
ELECTRIC	E008239991	64.00	58.18	1424.52
ELECTRIC	EGRECVM101	335.90	7865.94	69610.13
BTU GAS	G17847979	0.00	0.00	0.00
<b>AVERAGE TEMPERATURE (High/Low)</b>		<b>92/72</b>	<b>90/71</b>	<b>91/73</b>
<b>MONTHLY RAINFALL (inches)</b>		<b>5.72</b>	<b>6.00</b>	<b>2.52</b>

**SERVICE AGREEMENT:** Use or consumption of services rendered by this City shall constitute an agreement by the consumer with the City to abide by the rules of the City with regard to its utility service, including, but not limited to prevailing ordinances and policies of this City and its departments.  
 A 1.5% late fee will be charged for new charges not paid by 7 P.M. on your due date.  
 Service disconnection may result from past due balances.

**MESSAGES**

- THANK YOU FOR YOUR PAYMENT
- GRU's energy and water surveys can help your business find ways to save money and improve comfort. Our trained staff will inspect your business at no charge. To schedule a survey call 352-393-1460.
- During an audit of your utility bill, an error was discovered regarding the calculation of natural gas taxes and/or surcharges. A correction has been made, which may affect your utility bill moving forward. We apologize for the inconvenience.

Please tear off this portion and return it with your payment in the enclosed envelope.

**CHANGE OF MAILING ADDRESS**

Street: \_\_\_\_\_  
 City: \_\_\_\_\_  
 State: \_\_\_\_\_ Zip: \_\_\_\_\_  
 Telephone: \_\_\_\_\_  
 Email: \_\_\_\_\_

ACCOUNT# 2000-4670-6376

Please write account number on check and make check payable to: **GRU** \_\_\_\_\_ Payment Amount

Or pay online at [www.gru.com](http://www.gru.com)

**Current month charges due by 7pm on 10/07/2014**

<b>TOTAL AMOUNT DUE</b>
<b>\$ 2,430.80</b>

000042 BILLQ 42 T:

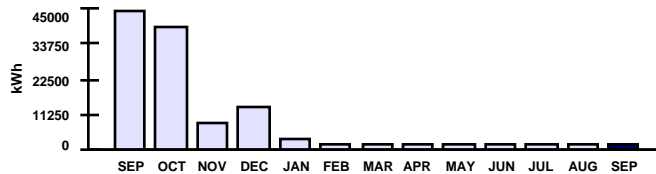
  
 GAINESVILLE RENEWABLE ENERGY CENTER LLC  
 11201 NW US HIGHWAY 441  
 GAINESVILLE FL 32653-8001

**GAINESVILLE REGIONAL UTILITIES**

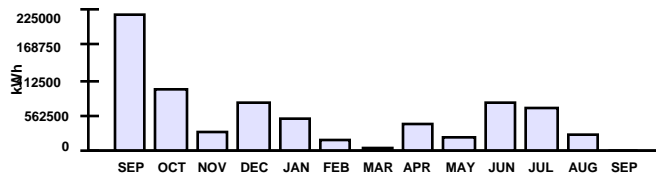
**Electric Service Details**

Meter Number	METER READING DATES Previous	METER READING DATES Present	Meter Read Type	Days of Service	METER READINGS Previous	METER READINGS Present	Meter Multiplier	Electric Consumption	Peak Demand	Next Meter Read on or About
E008239991	08/06/2014	09/04/2014	ACTUAL	30	2510	2514	480.0000	1,920 kWh	35 kW	09/30/2014
EGRECV101	08/06/2014	09/04/2014	ACTUAL	30	9282718	9292795	1.00000	10,077 kWh	N/A	09/30/2014

Description	Usage	Rate	Amount Billed
ELECTRIC CUSTOMER CHARGE		\$ 100.00	\$ 100.00
ENERGY USE	1,920	\$ 0.0450	\$ 86.40
ELECTRIC DEMAND	35	\$ 9.2500	\$ 323.75
ELECTRIC FUEL ADJUSTMENT	1,920	\$ 0.0690	\$ 132.48
FLORIDA GROSS RECEIPTS TAX			\$ 16.48
GAINESVILLE ELEC UTIL TAX			\$ 52.66
<b>Subtotal for meter E008239991</b>			<b>\$ 711.77</b>



Description	Usage	Rate	Amount Billed
ELECTRIC CUSTOMER CHARGE		\$ 350.00	\$ 350.00
ENERGY USE	10,077	\$ 0.0387	\$ 389.98
ELECTRIC FUEL ADJUSTMENT	10,077	\$ 0.0690	\$ 695.31
FLORIDA GROSS RECEIPTS TAX			\$ 36.80
GAINESVILLE ELEC UTIL TAX			\$ 77.68
<b>Subtotal for meter EGRECV101</b>			<b>\$ 1,549.77</b>



Total for Electric Service Details \$ 2,261.54

**Gas Service Details**

Meter Number	METER READING DATES Previous	METER READING DATES Present	Meter Read Type	Days of Service	METER READINGS Previous	METER READINGS Present	Meter Multiplier	BTU Factor	Gas Consumption	Next Meter Read on or About
G17847979	08/01/2014	08/31/2014	ACTUAL	31	98352	98373	1.00000	1.01900	0 BTU	09/25/2014

Description	Usage	Rate	Amount Billed
NATURAL GAS USE	0	\$ 102.92	\$ 102.92
<b>Total for Gas Service Details</b>			<b>\$ 102.92</b>

**Water and Wastewater Service Details**

Description	Usage	Rate	Amount Billed
WASTEWATER CUSTOMER CHARGE		\$ 7.85	\$ 7.85
WASTEWATER BILLING	10	\$ 5.8500	\$ 58.50
<b>Total for Water and Wastewater Service Details</b>			<b>\$ 66.35</b>

**Customer Inquiries**

Customer Service	(352) 334-3434	Nationwide Toll-free Number	1-800-818-3436
Emergencies or Outages	(352) 334-2871	Stormwater Service	(352) 334-5070
		Solid Waste Service	(352) 334-2330

**Payment Information**

Make checks payable to GRU; return stub and check to: P.O. Box 147051, Gainesville, FL 32614-7051. You may also pay your bill online, by phone at 1-866-269-2881 or at a convenient location in your neighborhood. Visit [www.gru.com](http://www.gru.com) for details.

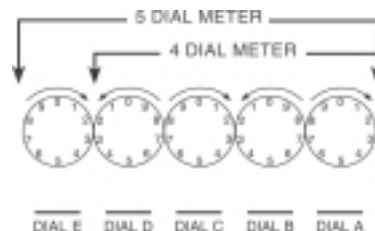
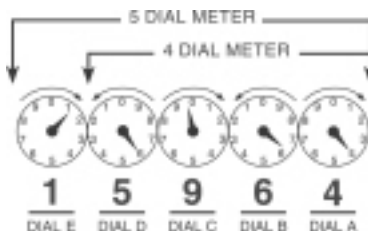
Lobby .....8 AM - 5 PM: M, T, Th, F and 9 AM - 5 PM: W

Drive-thru .....7:30 AM - 6 PM: M - F

Night depository payments will be posted the next business day if received after 3:30 PM weekdays.

**HOW TO READ YOUR METER**

Read the dials from right to left (A - E). If the dial hand is between two numbers, use the lower number.





Gainesville Regional Utilities  
301 S.E. 4 Avenue www.gru.com  
Gainesville FL 32601 352-334-3434

Account: 2000-4670-6376 Page 1 of 2  
Bill Date: 08/21/2014

GAINESVILLE RENEWABLE ENERGY CENTER PARTNER: 1000182581  
LLC 704000919821  
11201 NW US HIGHWAY 441 ROUTE: MULTIPLE  
GAINESVILLE FL 32653 NRES

Cash Security Deposit on File is \$120.00

**ACCOUNT SUMMARY**

Current Month Charges:	\$	40,956.81
Adjustments & Service Charges	\$	-0.01
Balance Forward:	\$	0.00
<b>TOTAL AMOUNT DUE</b>	<b>\$</b>	<b>40,956.80</b>

**DUE BY 09/10/2014**

**SUMMARY OF SERVICES**

**UTILITIES (See reverse for details about your utility charges.)**

Electric	\$	28,948.96
Gas	\$	10,034.42
Wastewater	\$	66.35
<b>Total Utility Charge</b>	<b>\$</b>	<b>39,049.73</b>

**TAXES AND SURCHARGES**

Florida Gross Receipts Tax	\$	742.28
City of Gainesville Utility Tax	\$	1,164.80
<b>Total Taxes and Surcharges</b>	<b>\$</b>	<b>1,907.08</b>

**TOTAL CURRENT MONTH CHARGES \$ 40,956.81**

**ADJUSTMENTS & SERVICE CHARGES**

SECURITY DEPOSIT INTEREST	\$	-0.01
<b>TOTAL ADJUSTMENTS &amp; SERVICE CHARGES</b>	<b>\$</b>	<b>-0.01</b>

**PREVIOUS BILL ACTIVITY**

Previous Balance	\$	102,122.50
Payment Amount (Date: 08/04/2014)	\$	-102,122.50
<b>BALANCE FORWARD</b>	<b>\$</b>	<b>0.00</b>

**AVERAGE DAILY CONSUMPTION**

Service	Meter	This Month	Last Month	Last Year
DEMAND	E008239991	35.00	35.00	168.00
ELECTRIC	E008239991	58.18	66.21	1803.64
ELECTRIC	EGRECVM101	7865.94	23435.66	78012.85
BTU GAS	G17847979	0.00	0.00	0.00
<b>AVERAGE TEMPERATURE (High/Low)</b>		<b>90/71</b>	<b>90/70</b>	<b>90/73</b>
<b>MONTHLY RAINFALL (inches)</b>		<b>6.00</b>	<b>5.13</b>	<b>14.84</b>

**SERVICE AGREEMENT:** Use or consumption of services rendered by this City shall constitute an agreement by the consumer with the City to abide by the rules of the City with regard to its utility service, including, but not limited to prevailing ordinances and policies of this City and its departments. A 1.5% late fee will be charged for new charges not paid by 7 P.M. on your due date. Service disconnection may result from past due balances.

**MESSAGES**

**THANK YOU FOR YOUR PAYMENT**

The Gainesville City Commission will consider GRU's proposed fiscal year 2015 budget during special meetings on Sept. 8 and Sept. 23 at 6 p.m. in the City Hall Auditorium (200 E. University Ave.). The proposal includes a residential price increase of \$6.16 for customers using electric, natural gas, water and wastewater services. If approved, the new prices will go into effect Oct. 1, 2014. Complete details are available on gru.com.

Always know where electric, gas, water and telephone lines are buried to avoid injury or costly repairs. Call 811 before digging to have your utility lines marked with highly visible water-based paint or flags.

During a routine audit of your utility bill, an error was discovered regarding the calculation of natural gas taxes and/or surcharges. A correction has been made, which may affect your utility bill moving forward. We apologize for the inconvenience.

Energy tip: Install occupancy sensors on lights in conference rooms and break rooms to save 45 to 60 percent on lighting costs in those rooms.

Please tear off this portion and return it with your payment in the enclosed envelope.

**CHANGE OF MAILING ADDRESS**

Street: \_\_\_\_\_  
City: \_\_\_\_\_  
State: \_\_\_\_\_ Zip: \_\_\_\_\_  
Telephone: \_\_\_\_\_  
Email: \_\_\_\_\_

ACCOUNT# 2000-4670-6376

Please write account number on check and make check payable to: **GRU** Payment Amount

Or pay online at [www.gru.com](http://www.gru.com)

**Current month charges due by 7pm on 09/10/2014**

**TOTAL AMOUNT DUE**

**\$ 40,956.80**

000059 BILLQ 59 T:

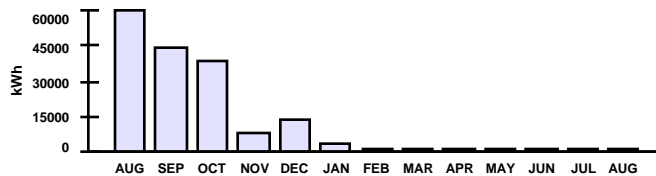
GAINESVILLE RENEWABLE ENERGY CENTER LLC  
11201 NW US HIGHWAY 441  
GAINESVILLE FL 32653-8001

**GAINESVILLE REGIONAL UTILITIES**

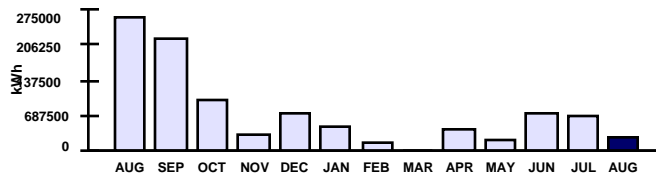
**Electric Service Details**

Meter Number	METER READING DATES	Meter Read Type	Days of Service	METER READINGS	Meter Multiplier	Electric Consumption	Peak Demand	Next Meter Read on or About
	Previous Present			Previous Present				
E008239991	07/04/2014 08/05/2014	ACTUAL	33	2506 2510	480.0000	1,920 kWh	35 kW	08/29/2014
EGRECV101	07/04/2014 08/05/2014	ACTUAL	33	9023142 9282718	1.00000	259,576 kWh	N/A	08/29/2014

Description	Usage	Rate	Amount Billed
ELECTRIC CUSTOMER CHARGE		\$ 100.00	\$ 100.00
ENERGY USE	1,920	\$ 0.0450	\$ 86.40
ELECTRIC DEMAND	35	\$ 9.2500	\$ 323.75
ELECTRIC FUEL ADJUSTMENT	1,920	\$ 0.0690	\$ 132.48
FLORIDA GROSS RECEIPTS TAX			\$ 16.48
GAINESVILLE ELEC UTIL TAX			\$ 52.66
<b>Subtotal for meter E008239991</b>			<b>\$ 711.77</b>
-- IC 10/13 PRIMARY METER FOR GREC			



Description	Usage	Rate	Amount Billed
ELECTRIC CUSTOMER CHARGE		\$ 350.00	\$ 350.00
ENERGY USE	259,576	\$ 0.0387	\$ 10,045.59
ELECTRIC FUEL ADJUSTMENT	259,576	\$ 0.0690	\$ 17,910.74
FLORIDA GROSS RECEIPTS TAX			\$ 725.80
GAINESVILLE ELEC UTIL TAX			\$ 1,112.14
<b>Subtotal for meter EGRECV101</b>			<b>\$ 30,144.27</b>
-- GREC			
<b>Total for Electric Service Details</b>			<b>\$ 30,856.04</b>



**Gas Service Details**

Meter Number	METER READING DATES	Meter Read Type	Days of Service	METER READINGS	Meter Multiplier	BTU Factor	Gas Consumption	Next Meter Read on or About
	Previous Present			Previous Present				
G17847979	07/01/2014 07/31/2014	ACTUAL	31	96553 98352	1.00000	1.01800	0 BTU	08/27/2014

Description	Usage	Rate	Amount Billed
NATURAL GAS USE	0	\$ 10,034.42	\$ 10,034.42
<b>Total for Gas Service Details</b>			<b>\$ 10,034.42</b>

**Water and Wastewater Service Details**

Description	Usage	Rate	Amount Billed
WASTEWATER CUSTOMER CHARGE		\$ 7.85	\$ 7.85
WASTEWATER BILLING	10	\$ 5.8500	\$ 58.50
<b>Total for Water and Wastewater Service Details</b>			<b>\$ 66.35</b>

**Customer Inquiries**

Customer Service	(352) 334-3434	Nationwide Toll-free Number	1-800-818-3436
Emergencies or Outages	(352) 334-2871	Stormwater Service	(352) 334-5070
		Solid Waste Service	(352) 334-2330

**Payment Information**

Make checks payable to GRU; return stub and check to: P.O. Box 147051, Gainesville, FL 32614-7051. You may also pay your bill online, by phone at 1-866-269-2881 or at a convenient location in your neighborhood. Visit [www.gru.com](http://www.gru.com) for details.

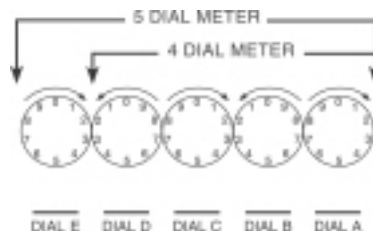
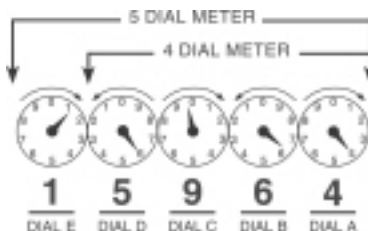
Lobby .....8 AM - 5 PM: M, T, Th, F and 9 AM - 5 PM: W

Drive-thru .....7:30 AM - 6 PM: M - F

Night depository payments will be posted the next business day if received after 3:30 PM weekdays.

**HOW TO READ YOUR METER**

Read the dials from right to left (A - E). If the dial hand is between two numbers, use the lower number.







Gainesville Regional Utilities  
301 S.E. 4 Avenue www.gru.com  
Gainesville FL 32601 352-334-3434

Account: 2000-4670-6376 Page 1 of 2  
Bill Date: 07/22/2014

GAINESVILLE RENEWABLE ENERGY CENTER PARTNER: 1000182581  
LLC 710000786163  
11201 NW US HIGHWAY 441 ROUTE: MULTIPLE  
GAINESVILLE FL 32653 NRES

Cash Security Deposit on File is \$120.00

ACCOUNT SUMMARY		
Current Month Charges:	\$	102,122.51
Adjustments & Service Charges	\$	-0.01
Balance Forward:	\$	0.00
<b>TOTAL AMOUNT DUE</b>	<b>\$</b>	<b>102,122.50</b>

**DUE BY 08/11/2014**

**SUMMARY OF SERVICES**

**UTILITIES** (See reverse for details about your utility charges.)

Electric	\$	74,189.21
Gas	\$	23,023.14
Wastewater	\$	101.45
<b>Total Utility Charge</b>	<b>\$</b>	<b>97,313.80</b>

**TAXES AND SURCHARGES**

Florida Gross Receipts Tax	\$	1,902.29
City of Gainesville Utility Tax	\$	2,906.42
<b>Total Taxes and Surcharges</b>	<b>\$</b>	<b>4,808.71</b>
<b>TOTAL CURRENT MONTH CHARGES</b>	<b>\$</b>	<b>102,122.51</b>

**ADJUSTMENTS & SERVICE CHARGES**

SECURITY DEPOSIT INTEREST	\$	-0.01
<b>TOTAL ADJUSTMENTS &amp; SERVICE CHARGES</b>	<b>\$</b>	<b>-0.01</b>

**PREVIOUS BILL ACTIVITY**

Previous Balance	\$	105,048.84
Payment Amount (Date: 07/07/2014)	\$	-105,048.84
<b>BALANCE FORWARD</b>	<b>\$</b>	<b>0.00</b>

**AVERAGE DAILY CONSUMPTION**

Service	Meter	This Month	Last Month	Last Year
DEMAND	E008239991	35.00	35.00	208.00
ELECTRIC	E008239991	66.21	64.00	2640.00
ELECTRIC	EGRECVM101	23435.66	25605.27	22099.86
BTU GAS	G17847979	0.00	0.00	0.00
<b>AVERAGE TEMPERATURE (High/Low)</b>		<b>90/70</b>	<b>87/63</b>	<b>90/72</b>
<b>MONTHLY RAINFALL (inches)</b>		<b>5.13</b>	<b>2.52</b>	<b>6.21</b>

**SERVICE AGREEMENT:** Use or consumption of services rendered by this City shall constitute an agreement by the consumer with the City to abide by the rules of the City with regard to its utility service, including, but not limited to prevailing ordinances and policies of this City and its departments.  
 A 1.5% late fee will be charged for new charges not paid by 7 P.M. on your due date.  
 Service disconnection may result from past due balances.

**MESSAGES**

- THANK YOU FOR YOUR PAYMENT
- This year's annual water quality results are available. Visit [gru.com/waterreport](http://gru.com/waterreport) to view the complete water quality report.
  - Energy tip: Replace incandescent bulbs in exit signs with LEDs, and save about 90 percent on signage operating costs. If LEDs are not compatible with your current sign, a new sign could pay for itself within a year.
  - Energy tip: To save money, use smart power strips to regulate energy use on equipment such as computers, copiers and printers.

Please tear off this portion and return it with your payment in the enclosed envelope.

**CHANGE OF MAILING ADDRESS**

Street: \_\_\_\_\_  
 City: \_\_\_\_\_  
 State: \_\_\_\_\_ Zip: \_\_\_\_\_  
 Telephone: \_\_\_\_\_  
 Email: \_\_\_\_\_

ACCOUNT# 2000-4670-6376

Please write account number on check and make check payable to: **GRU** \_\_\_\_\_  
Payment Amount

Or pay online at [www.gru.com](http://www.gru.com)

**Current month charges due by 7pm on 08/11/2014**

<b>TOTAL AMOUNT DUE</b>
<b>\$ 102,122.50</b>

000932 BILLQ 932 T:

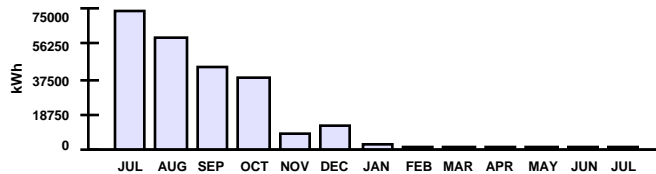
  
 GAINESVILLE RENEWABLE ENERGY CENTER LLC  
 11201 NW US HIGHWAY 441  
 GAINESVILLE FL 32653-8001

**GAINESVILLE REGIONAL UTILITIES**

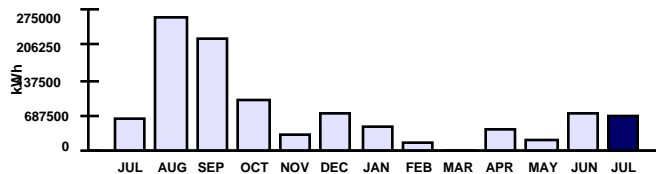
**Electric Service Details**

Meter Number	METER READING DATES	Meter Read Type	Days of Service	METER READINGS	Meter Multiplier	Electric Consumption	Peak Demand	Next Meter Read on or About
	Previous Present			Previous Present				
E008239991	06/05/2014 07/03/2014	ACTUAL	29	2502 2506	480.0000	1,920 kWh	35 kW	07/31/2014
EGRECV101	06/05/2014 07/03/2014	ACTUAL	29	8343508 9023142	1.00000	679,634 kWh	N/A	07/31/2014

Description	Usage	Rate	Amount Billed
ELECTRIC CUSTOMER CHARGE		\$ 100.00	\$ 100.00
ENERGY USE	1,920	\$ 0.0450	\$ 86.40
ELECTRIC DEMAND	35	\$ 9.2500	\$ 323.75
ELECTRIC FUEL ADJUSTMENT	1,920	\$ 0.0690	\$ 132.48
FLORIDA GROSS RECEIPTS TAX			\$ 16.48
GAINESVILLE ELEC UTIL TAX			\$ 52.66
<b>Subtotal for meter E008239991</b>			<b>\$ 711.77</b>
-- IC 10/13 PRIMARY METER FOR GREC			



Description	Usage	Rate	Amount Billed
ELECTRIC CUSTOMER CHARGE		\$ 350.00	\$ 350.00
ENERGY USE	679,634	\$ 0.0387	\$ 26,301.83
ELECTRIC FUEL ADJUSTMENT	679,634	\$ 0.0690	\$ 46,894.75
FLORIDA GROSS RECEIPTS TAX			\$ 1,885.81
GAINESVILLE ELEC UTIL TAX			\$ 2,853.76
<b>Subtotal for meter EGRECV101</b>			<b>\$ 78,286.15</b>
-- GREC			
<b>Total for Electric Service Details</b>			<b>\$ 78,997.92</b>



**Gas Service Details**

Meter Number	METER READING DATES	Meter Read Type	Days of Service	METER READINGS	Meter Multiplier	BTU Factor	Gas Consumption	Next Meter Read on or About
	Previous Present			Previous Present				
G17847979	06/01/2014 06/30/2014	ACTUAL	30	92530 96553	1.00000	1.01800	0 BTU	07/26/2014

Description	Usage	Rate	Amount Billed
NATURAL GAS USE	0	\$ 23,023.14	\$ 23,023.14
<b>Total for Gas Service Details</b>			<b>\$ 23,023.14</b>

**Water and Wastewater Service Details**

Description	Usage	Rate	Amount Billed
WASTEWATER CUSTOMER CHARGE		\$ 7.85	\$ 7.85
WASTEWATER BILLING	16	\$ 5.8500	\$ 93.60
<b>Total for Water and Wastewater Service Details</b>			<b>\$ 101.45</b>

**Customer Inquiries**

Customer Service	(352) 334-3434	Nationwide Toll-free Number	1-800-818-3436
Emergencies or Outages	(352) 334-2871	Stormwater Service	(352) 334-5070
		Solid Waste Service	(352) 334-2330

**Payment Information**

Make checks payable to GRU, return stub and check to: P.O. Box 147051, Gainesville, FL 32614-7051. You may also pay your bill online, by phone at 1-866-269-2881 or at a convenient location in your neighborhood. Visit [www.gru.com](http://www.gru.com) for details.

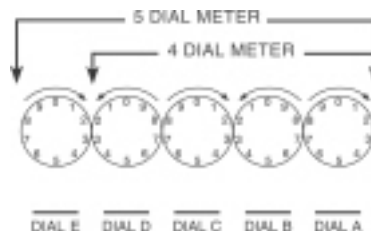
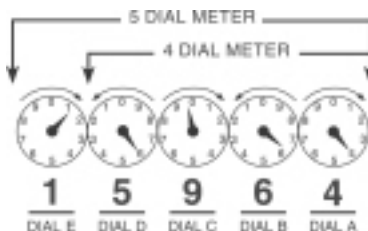
Lobby .....8 AM - 5 PM: M, T, Th, F and 9 AM - 5 PM: W

Drive-thru .....7:30 AM - 6 PM: M - F

Night depository payments will be posted the next business day if received after 3:30 PM weekdays.

**HOW TO READ YOUR METER**

Read the dials from right to left (A - E). If the dial hand is between two numbers, use the lower number.





Gainesville Regional Utilities  
301 S.E. 4 Avenue www.gru.com  
Gainesville FL 32601 352-334-3434

Account: 2000-4670-6376 Page 1 of 2  
Bill Date: 06/18/2014

GAINESVILLE RENEWABLE ENERGY CENTER PARTNER: 1000182581  
LLC 701000971919  
11201 NW US HIGHWAY 441 ROUTE: MULTIPLE  
GAINESVILLE FL 32653 NRES

Cash Security Deposit on File is \$120.00

ACCOUNT SUMMARY		
Current Month Charges:	\$	105,048.85
Adjustments & Service Charges	\$	-0.01
Balance Forward:	\$	0.00
<b>TOTAL AMOUNT DUE</b>	<b>\$</b>	<b>105,048.84</b>

**DUE BY 07/08/2014**

**SUMMARY OF SERVICES**

**UTILITIES** (See reverse for details about your utility charges.)

Electric	\$	83,723.25
Gas	\$	15,821.49
Wastewater	\$	83.90
<b>Total Utility Charge</b>	<b>\$</b>	<b>99,628.64</b>

**TAXES AND SURCHARGES**

Florida Gross Receipts Tax	\$	2,146.75
City of Gainesville Utility Tax	\$	3,273.46
<b>Total Taxes and Surcharges</b>	<b>\$</b>	<b>5,420.21</b>
<b>TOTAL CURRENT MONTH CHARGES</b>	<b>\$</b>	<b>105,048.85</b>

**ADJUSTMENTS & SERVICE CHARGES**

SECURITY DEPOSIT INTEREST	\$	-0.01
<b>TOTAL ADJUSTMENTS &amp; SERVICE CHARGES</b>	<b>\$</b>	<b>-0.01</b>

**PREVIOUS BILL ACTIVITY**

Previous Balance	\$	45,721.25
Payment Amount (Date: 06/02/2014)	\$	-45,721.25
<b>BALANCE FORWARD</b>	<b>\$</b>	<b>0.00</b>

**AVERAGE DAILY CONSUMPTION**

Service	Meter	This Month	Last Month	Last Year
DEMAND	E008239991	35.00	35.00	236.00
ELECTRIC	E008239991	64.00	60.00	2181.82
ELECTRIC	EGRECVM101	25605.27	6777.97	5345.03
BTU GAS	G17847979	0.00	0.00	0.00
<b>AVERAGE TEMPERATURE (High/Low)</b>		<b>87/63</b>	<b>81/58</b>	<b>86/62</b>
<b>MONTHLY RAINFALL (inches)</b>		<b>2.52</b>	<b>3.44</b>	<b>3.74</b>

**SERVICE AGREEMENT:** Use or consumption of services rendered by this City shall constitute an agreement by the consumer with the City to abide by the rules of the City with regard to its utility service, including, but not limited to prevailing ordinances and policies of this City and its departments.  
A 1.5% late fee will be charged for new charges not paid by 7 P.M. on your due date.  
Service disconnection may result from past due balances.

**MESSAGES**

- THANK YOU FOR YOUR PAYMENT
- Visit GRU Storm Central to learn how to prepare for a storm. Information about what to do before, during and after a storm is available at gru.com/stormcentral.
- Have a qualified technician test, clean and adjust your air-conditioning equipment to increase efficiency and save money. This typically includes replacing dirty air filters and cleaning intake screens, condenser coils, supply registers and return grilles.

Please tear off this portion and return it with your payment in the enclosed envelope.

**CHANGE OF MAILING ADDRESS**

Street: \_\_\_\_\_

City: \_\_\_\_\_

State: \_\_\_\_\_ Zip: \_\_\_\_\_

Telephone: \_\_\_\_\_

Email: \_\_\_\_\_

ACCOUNT# **2000-4670-6376**

Please write account number on check and make check payable to: **GRU** \_\_\_\_\_ Payment Amount

Or pay online at [www.gru.com](http://www.gru.com)

**Current month charges due by 7pm on 07/08/2014**

<b>TOTAL AMOUNT DUE</b>
<b>\$ 105,048.84</b>

000192 BILLQ 192 T:

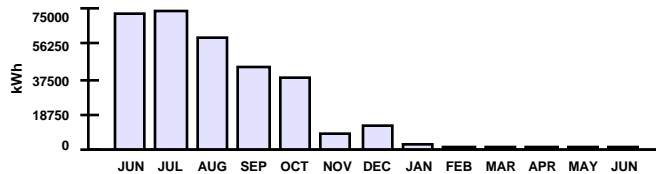
GAINESVILLE RENEWABLE ENERGY CENTER LLC  
11201 NW US HIGHWAY 441  
GAINESVILLE FL 32653-8001

**GAINESVILLE REGIONAL UTILITIES**

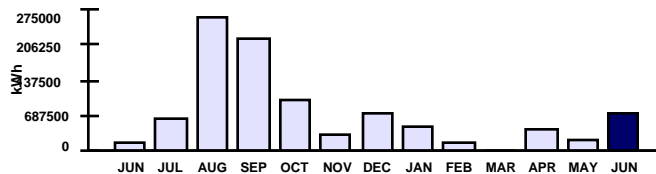
**Electric Service Details**

Meter Number	METER READING DATES Previous	METER READING DATES Present	Meter Read Type	Days of Service	METER READINGS Previous	METER READINGS Present	Meter Multiplier	Electric Consumption	Peak Demand	Next Meter Read on or About
E008239991	05/06/2014	06/04/2014	ACTUAL	30	2498	2502	480.0000	1,920 kWh	35 kW	06/30/2014
EGRECV101	05/06/2014	06/04/2014	ACTUAL	30	7575350	8343508	1.00000	768,158 kWh	N/A	06/30/2014

Description	Usage	Rate	Amount Billed
ELECTRIC CUSTOMER CHARGE		\$ 100.00	\$ 100.00
ENERGY USE	1,920	\$ 0.0450	\$ 86.40
ELECTRIC DEMAND	35	\$ 9.2500	\$ 323.75
ELECTRIC FUEL ADJUSTMENT	1,920	\$ 0.0690	\$ 132.48
FLORIDA GROSS RECEIPTS TAX			\$ 16.48
GAINESVILLE ELEC UTIL TAX			\$ 52.66
<b>Subtotal for meter E008239991</b>			<b>\$ 711.77</b>
-- IC 10/13 PRIMARY METER FOR GREC			



Description	Usage	Rate	Amount Billed
ELECTRIC CUSTOMER CHARGE		\$ 350.00	\$ 350.00
ENERGY USE	768,158	\$ 0.0387	\$ 29,727.72
ELECTRIC FUEL ADJUSTMENT	768,158	\$ 0.0690	\$ 53,002.90
FLORIDA GROSS RECEIPTS TAX			\$ 2,130.27
GAINESVILLE ELEC UTIL TAX			\$ 3,220.80
<b>Subtotal for meter EGRECV101</b>			<b>\$ 88,431.69</b>
-- GREC			
<b>Total for Electric Service Details</b>			<b>\$ 89,143.46</b>



**Gas Service Details**

Meter Number	METER READING DATES Previous	METER READING DATES Present	Meter Read Type	Days of Service	METER READINGS Previous	METER READINGS Present	Meter Multiplier	BTU Factor	Gas Consumption	Next Meter Read on or About
G17847979	05/01/2014	05/31/2014	ACTUAL	31	90607	92530	1.00000	1.01800	0 BTU	06/25/2014

Description	Usage	Rate	Amount Billed
NATURAL GAS USE	0	\$ 15,821.49	\$ 15,821.49
<b>Total for Gas Service Details</b>			<b>\$ 15,821.49</b>

**Water and Wastewater Service Details**

Description	Usage	Rate	Amount Billed
WASTEWATER CUSTOMER CHARGE		\$ 7.85	\$ 7.85
WASTEWATER BILLING	13	\$ 5.8500	\$ 76.05
<b>Total for Water and Wastewater Service Details</b>			<b>\$ 83.90</b>

**Customer Inquiries**

Customer Service	(352) 334-3434	Nationwide Toll-free Number	1-800-818-3436
Emergencies or Outages	(352) 334-2871	Stormwater Service	(352) 334-5070
		Solid Waste Service	(352) 334-2330

**Payment Information**

Make checks payable to GRU; return stub and check to: P.O. Box 147051, Gainesville, FL 32614-7051. You may also pay your bill online, by phone at 1-866-269-2881 or at a convenient location in your neighborhood. Visit [www.gru.com](http://www.gru.com) for details.

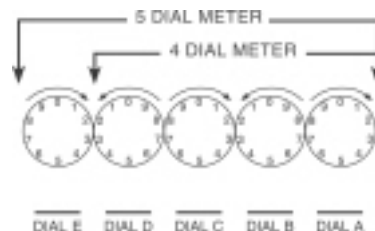
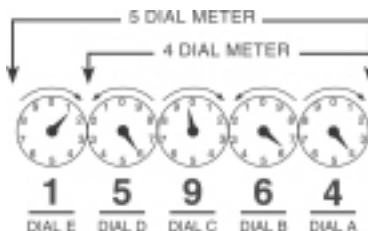
Lobby .....8 AM - 5 PM: M, T, Th, F and 9 AM - 5 PM: W

Drive-thru .....7:30 AM - 6 PM: M - F

Night depository payments will be posted the next business day if received after 3:30 PM weekdays.

**HOW TO READ YOUR METER**

Read the dials from right to left (A - E). If the dial hand is between two numbers, use the lower number.





Gainesville Regional Utilities  
301 S.E. 4 Avenue www.gru.com  
Gainesville FL 32601 352-334-3434

Account: 2000-4670-6376 Page 1 of 2  
Bill Date: 05/20/2014

GAINESVILLE RENEWABLE ENERGY CENTER PARTNER: 1000182581  
LLC 710000767214  
11201 NW US HIGHWAY 441 ROUTE: MULTIPLE  
GAINESVILLE FL 32653 NRES

Cash Security Deposit on File is \$120.00

ACCOUNT SUMMARY		
Current Month Charges:	\$	45,721.26
Adjustments & Service Charges	\$	-0.01
Balance Forward:	\$	0.00
<b>TOTAL AMOUNT DUE</b>	<b>\$</b>	<b>45,721.25</b>

**DUE BY 06/09/2014**

**SUMMARY OF SERVICES**

**UTILITIES** (See reverse for details about your utility charges.)

Electric	\$	24,352.23
Gas	\$	19,655.32
Wastewater	\$	101.45
<b>Total Utility Charge</b>	<b>\$</b>	<b>44,109.00</b>

**TAXES AND SURCHARGES**

Florida Gross Receipts Tax	\$	624.42
City of Gainesville Utility Tax	\$	987.84
<b>Total Taxes and Surcharges</b>	<b>\$</b>	<b>1,612.26</b>
<b>TOTAL CURRENT MONTH CHARGES</b>	<b>\$</b>	<b>45,721.26</b>

**ADJUSTMENTS & SERVICE CHARGES**

SECURITY DEPOSIT INTEREST	\$	-0.01
<b>TOTAL ADJUSTMENTS &amp; SERVICE CHARGES</b>	<b>\$</b>	<b>-0.01</b>

**PREVIOUS BILL ACTIVITY**

Previous Balance	\$	72,499.42
Payment Amount (Date: 05/01/2014)	\$	-72,499.42
<b>BALANCE FORWARD</b>	<b>\$</b>	<b>0.00</b>

**AVERAGE DAILY CONSUMPTION**

Service	Meter	This Month	Last Month	Last Year
DEMAND	E008239991	35.00	35.00	209.00
ELECTRIC	E008239991	60.00	66.21	2544.00
ELECTRIC	EGRECVM101	6777.97	15651.03	2308.42
BTU GAS	G17847979	0.00	0.00	0.00
<b>AVERAGE TEMPERATURE (High/Low)</b>		<b>81/58</b>	<b>73/49</b>	<b>81/58</b>
<b>MONTHLY RAINFALL (inches)</b>		<b>3.44</b>	<b>5.40</b>	<b>6.26</b>

**SERVICE AGREEMENT:** Use or consumption of services rendered by this City shall constitute an agreement by the consumer with the City to abide by the rules of the City with regard to its utility service, including, but not limited to prevailing ordinances and policies of this City and its departments.  
 A 1.5% late fee will be charged for new charges not paid by 7 P.M. on your due date.  
 Service disconnection may result from past due balances.

**MESSAGES**

- THANK YOU FOR YOUR PAYMENT
- Go paperless. With eBill, you can get monthly email reminders to see your amount due, bill details and payment due date. Schedule a payment on our secure website. For details and sign up, visit gru.com.
- GRU's energy and water surveys can help your business find ways to save money and improve comfort. Our trained staff will inspect your business at no charge. To schedule a survey call 352-393-1460.

Please tear off this portion and return it with your payment in the enclosed envelope.

**CHANGE OF MAILING ADDRESS**

Street: \_\_\_\_\_  
 City: \_\_\_\_\_  
 State: \_\_\_\_\_ Zip: \_\_\_\_\_  
 Telephone: \_\_\_\_\_  
 Email: \_\_\_\_\_

ACCOUNT# **2000-4670-6376**

Please write account number on check and make check payable to: **GRU** \_\_\_\_\_  
 Payment Amount

Or pay online at [www.gru.com](http://www.gru.com)

**Current month charges due by 7pm on 06/09/2014**

<b>TOTAL AMOUNT DUE</b>
<b>\$ 45,721.25</b>

000394 BILLQ 394 T:

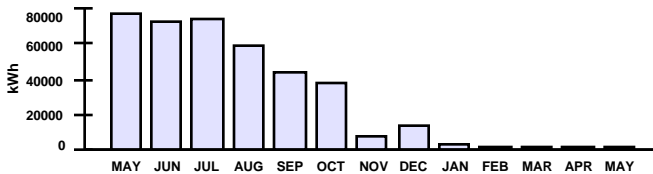
  
 GAINESVILLE RENEWABLE ENERGY CENTER LLC  
 11201 NW US HIGHWAY 441  
 GAINESVILLE FL 32653-8001

**GAINESVILLE REGIONAL UTILITIES**

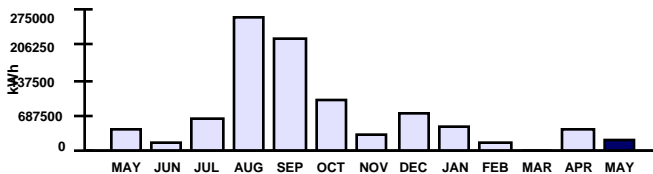
**Electric Service Details**

Meter Number	METER READING DATES Previous	METER READING DATES Present	Meter Read Type	Days of Service	METER READINGS Previous	METER READINGS Present	Meter Multiplier	Electric Consumption	Peak Demand	Next Meter Read on or About
E008239991	04/04/2014	05/05/2014	ACTUAL	32	2494	2498	480.0000	1,920 kWh	35 kW	05/30/2014
EGRECV101	04/04/2014	05/05/2014	ACTUAL	32	7358455	7575350	1.00000	216.895 kWh	N/A	05/30/2014

Description	Usage	Rate	Amount Billed
ELECTRIC CUSTOMER CHARGE		\$ 100.00	\$ 100.00
ENERGY USE	1,920	\$ 0.0450	\$ 86.40
ELECTRIC DEMAND	35	\$ 9.2500	\$ 323.75
ELECTRIC FUEL ADJUSTMENT	1,920	\$ 0.0690	\$ 132.48
FLORIDA GROSS RECEIPTS TAX			\$ 16.48
GAINESVILLE ELEC UTIL TAX			\$ 52.66
<b>Subtotal for meter E008239991</b>			<b>\$ 711.77</b>
-- IC 10/13 PRIMARY METER FOR GREC			



Description	Usage	Rate	Amount Billed
ELECTRIC CUSTOMER CHARGE		\$ 350.00	\$ 350.00
ENERGY USE	216,895	\$ 0.0387	\$ 8,393.84
ELECTRIC FUEL ADJUSTMENT	216,895	\$ 0.0690	\$ 14,965.76
FLORIDA GROSS RECEIPTS TAX			\$ 607.94
GAINESVILLE ELEC UTIL TAX			\$ 935.18
<b>Subtotal for meter EGRECV101</b>			<b>\$ 25,252.72</b>
-- GREC			
<b>Total for Electric Service Details</b>			<b>\$ 25,964.49</b>



**Gas Service Details**

Meter Number	METER READING DATES Previous	METER READING DATES Present	Meter Read Type	Days of Service	METER READINGS Previous	METER READINGS Present	Meter Multiplier	BTU Factor	Gas Consumption	Next Meter Read on or About
G17847979	04/01/2014	04/30/2014	ACTUAL	30	88790	90607	1.00000	1.01700	0 BTU	05/28/2014

Description	Usage	Rate	Amount Billed
NATURAL GAS USE	0	\$ 19,655.32	\$ 19,655.32
<b>Total for Gas Service Details</b>			<b>\$ 19,655.32</b>

**Water and Wastewater Service Details**

Description	Usage	Rate	Amount Billed
WASTEWATER CUSTOMER CHARGE		\$ 7.85	\$ 7.85
WASTEWATER BILLING	16	\$ 5.8500	\$ 93.60
<b>Total for Water and Wastewater Service Details</b>			<b>\$ 101.45</b>

**Customer Inquiries**

Customer Service	(352) 334-3434	Nationwide Toll-free Number	1-800-818-3436
Emergencies or Outages	(352) 334-2871	Stormwater Service	(352) 334-5070
		Solid Waste Service	(352) 334-2330

**Payment Information**

Make checks payable to GRU; return stub and check to: P.O. Box 147051, Gainesville, FL 32614-7051. You may also pay your bill online, by phone at 1-866-269-2881 or at a convenient location in your neighborhood. Visit [www.gru.com](http://www.gru.com) for details.

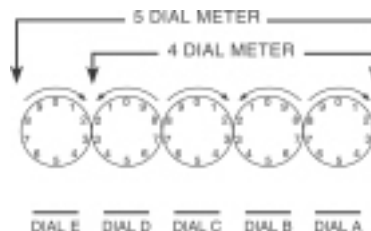
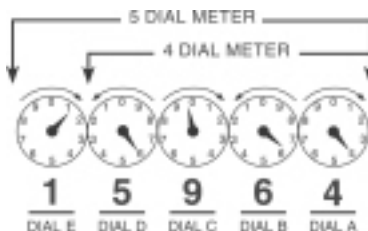
Lobby .....8 AM - 5 PM: M, T, Th, F and 9 AM - 5 PM: W

Drive-thru .....7:30 AM - 6 PM: M - F

Night depository payments will be posted the next business day if received after 3:30 PM weekdays.

**HOW TO READ YOUR METER**

Read the dials from right to left (A - E). If the dial hand is between two numbers, use the lower number.





Gainesville Regional Utilities  
301 S.E. 4 Avenue www.gru.com  
Gainesville FL 32601 352-334-3434

Account: 2000-4670-6376 Page 1 of 2  
Bill Date: 04/17/2014

GAINESVILLE RENEWABLE ENERGY CENTER PARTNER: 1000182581  
LLC 708000815580  
11201 NW US HIGHWAY 441 ROUTE: MULTIPLE  
GAINESVILLE FL 32653 NRES

Cash Security Deposit on File is \$120.00

ACCOUNT SUMMARY		
Current Month Charges:	\$	72,499.44
Adjustments & Service Charges	\$	-0.01
Balance Forward:	\$	-0.01
<b>TOTAL AMOUNT DUE</b>	<b>\$</b>	<b>72,499.42</b>

**DUE BY 05/07/2014**

**SUMMARY OF SERVICES**

**UTILITIES** (See reverse for details about your utility charges.)

Electric	\$	49,875.51
Gas	\$	19,290.76
Wastewater	\$	83.90
<b>Total Utility Charge</b>	<b>\$</b>	<b>69,250.17</b>

**TAXES AND SURCHARGES**

Florida Gross Receipts Tax	\$	1,278.86
City of Gainesville Utility Tax	\$	1,970.41
<b>Total Taxes and Surcharges</b>	<b>\$</b>	<b>3,249.27</b>
<b>TOTAL CURRENT MONTH CHARGES</b>	<b>\$</b>	<b>72,499.44</b>

**ADJUSTMENTS & SERVICE CHARGES**

SECURITY DEPOSIT INTEREST	\$	-0.01
<b>TOTAL ADJUSTMENTS &amp; SERVICE CHARGES</b>	<b>\$</b>	<b>-0.01</b>

**PREVIOUS BILL ACTIVITY**

Previous Balance	\$	11,415.94
Payment Amount (Date: 04/01/2014)	\$	-11,415.95
<b>BALANCE FORWARD</b>	<b>\$</b>	<b>-0.01</b>

**AVERAGE DAILY CONSUMPTION**

Service	Meter	This Month	Last Month	Last Year
DEMAND	E008239991	35.00	35.00	299.00
ELECTRIC	E008239991	66.21	68.57	3442.76
ELECTRIC	EGRECVM101	15651.03	2064.21	0.00
BTU GAS	G17847979	0.00	0.00	0.00
<b>AVERAGE TEMPERATURE (High/Low)</b>		<b>73/49</b>	<b>69/45</b>	<b>74/44</b>
<b>MONTHLY RAINFALL (inches)</b>		<b>5.40</b>	<b>4.25</b>	<b>1.51</b>

**SERVICE AGREEMENT:** Use or consumption of services rendered by this City shall constitute an agreement by the consumer with the City to abide by the rules of the City with regard to its utility service, including, but not limited to prevailing ordinances and policies of this City and its departments.  
 A 1.5% late fee will be charged for new charges not paid by 7 P.M. on your due date.  
 Service disconnection may result from past due balances.

**MESSAGES**

THANK YOU FOR YOUR PAYMENT

Do you want a networking solution that will grow with your business? GRUCom Fiber Optic Communications offers Internet, data transport, colocation and other telecommunications services over a reliable, all-fiber platform. For more information and a price quote, call GRUCom at 352-334-3200 or visit GRUCom.com.

Always know where utility lines are buried to avoid injury or costly repairs. Call 811 before digging to have utility lines marked. For more safety tips, visit gru.com.

Please tear off this portion and return it with your payment in the enclosed envelope.

**CHANGE OF MAILING ADDRESS**

Street: \_\_\_\_\_  
 City: \_\_\_\_\_  
 State: \_\_\_\_\_ Zip: \_\_\_\_\_  
 Telephone: \_\_\_\_\_  
 Email: \_\_\_\_\_

ACCOUNT# 2000-4670-6376

Please write account number on check and make check payable to: **GRU** Payment Amount

Or pay online at [www.gru.com](http://www.gru.com)

**Current month charges due by 7pm on 05/07/2014**

<b>TOTAL AMOUNT DUE</b>
<b>\$ 72,499.42</b>

000133 BILLQ 133 T:

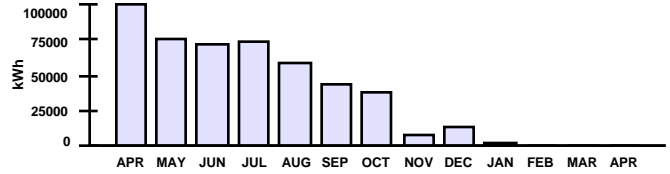


**GAINESVILLE REGIONAL UTILITIES**

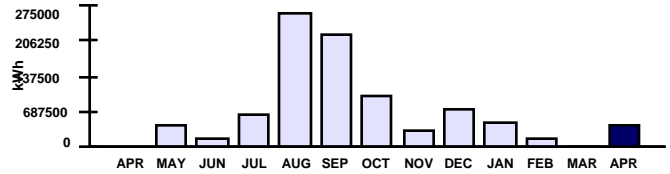
**Electric Service Details**

Meter Number	METER READING DATES Previous	METER READING DATES Present	Meter Read Type	Days of Service	METER READINGS Previous	METER READINGS Present	Meter Multiplier	Electric Consumption	Peak Demand	Next Meter Read on or About
E008239991	03/06/2014	04/03/2014	ACTUAL	29	2490	2494	480.0000	1,920 kWh	35 kW	04/30/2014
EGRECV101	03/06/2014	04/03/2014	ACTUAL	29	6904575	7358455	1.00000	453,880 kWh	N/A	04/30/2014

Description	Usage	Rate	Amount Billed
ELECTRIC CUSTOMER CHARGE		\$ 100.00	\$ 100.00
ENERGY USE	1,920	\$ 0.0450	\$ 86.40
ELECTRIC DEMAND	35	\$ 9.2500	\$ 323.75
ELECTRIC FUEL ADJUSTMENT	1,920	\$ 0.0690	\$ 132.48
FLORIDA GROSS RECEIPTS TAX			\$ 16.48
GAINESVILLE ELEC UTIL TAX			\$ 52.66
<b>Subtotal for meter E008239991</b>			<b>\$ 711.77</b>
-- IC 10/13 PRIMARY METER FOR GREC			



Description	Usage	Rate	Amount Billed
ELECTRIC CUSTOMER CHARGE		\$ 350.00	\$ 350.00
ENERGY USE	453,880	\$ 0.0387	\$ 17,565.16
ELECTRIC FUEL ADJUSTMENT	453,880	\$ 0.0690	\$ 31,317.72
FLORIDA GROSS RECEIPTS TAX			\$ 1,262.38
GAINESVILLE ELEC UTIL TAX			\$ 1,917.75
<b>Subtotal for meter EGRECV101</b>			<b>\$ 52,413.01</b>
-- GREC			
<b>Total for Electric Service Details</b>			<b>\$ 53,124.78</b>



**Gas Service Details**

Meter Number	METER READING DATES Previous	METER READING DATES Present	Meter Read Type	Days of Service	METER READINGS Previous	METER READINGS Present	Meter Multiplier	BTU Factor	Gas Consumption	Next Meter Read on or About
G17847979	03/01/2014	03/31/2014	ACTUAL	31	83862	88790	1.00000	1.01700	0 BTU	04/25/2014

Description	Usage	Rate	Amount Billed
NATURAL GAS USE	0	\$ 19,290.76	\$ 19,290.76
<b>Total for Gas Service Details</b>			<b>\$ 19,290.76</b>

**Water and Wastewater Service Details**

Description	Usage	Rate	Amount Billed
WASTEWATER CUSTOMER CHARGE		\$ 7.85	\$ 7.85
WASTEWATER BILLING	13	\$ 5.8500	\$ 76.05
<b>Total for Water and Wastewater Service Details</b>			<b>\$ 83.90</b>

**Customer Inquiries**

Customer Service	(352) 334-3434	Nationwide Toll-free Number	1-800-818-3436
Emergencies or Outages	(352) 334-2871	Stormwater Service	(352) 334-5070
		Solid Waste Service	(352) 334-2330

**Payment Information**

Make checks payable to GRU; return stub and check to: P.O. Box 147051, Gainesville, FL 32614-7051. You may also pay your bill online, by phone at 1-866-269-2881 or at a convenient location in your neighborhood. Visit [www.gru.com](http://www.gru.com) for details.

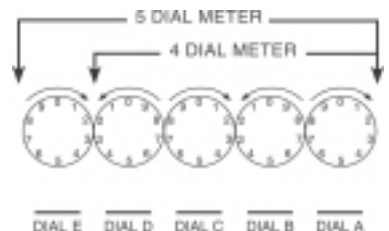
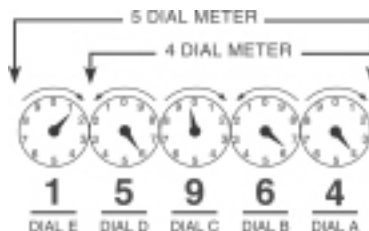
Lobby .....8 AM - 5 PM: M, T, Th, F and 9 AM - 5 PM: W

Drive-thru .....7:30 AM - 6 PM: M - F

Night depository payments will be posted the next business day if received after 3:30 PM weekdays.

**HOW TO READ YOUR METER**

Read the dials from right to left (A-E). If the dial hand is between two numbers, use the lower number.







Gainesville Regional Utilities  
301 S.E. 4 Avenue www.gru.com  
Gainesville FL 32601 352-334-3434

Account: 2000-4670-6376 Page 1 of 2  
Bill Date: 03/18/2014

GAINESVILLE RENEWABLE ENERGY CENTER PARTNER: 1000182581  
LLC 705000851475  
11201 NW US HIGHWAY 441 ROUTE: MULTIPLE  
GAINESVILLE FL 32653 NRES

Cash Security Deposit on File is \$120.00

**ACCOUNT SUMMARY**

Current Month Charges:	\$	11,415.95
Adjustments & Service Charges	\$	-0.01
Balance Forward:	\$	0.00
<b>TOTAL AMOUNT DUE</b>	<b>\$</b>	<b>11,415.94</b>

**DUE BY 04/07/2014**

**SUMMARY OF SERVICES**

**UTILITIES** (See reverse for details about your utility charges.)

Electric	\$	7,217.48
Gas	\$	3,607.15
Wastewater	\$	78.05
<b>Total Utility Charge</b>	<b>\$</b>	<b>10,902.68</b>

**TAXES AND SURCHARGES**

Florida Gross Receipts Tax	\$	185.07
City of Gainesville Utility Tax	\$	328.20
<b>Total Taxes and Surcharges</b>	<b>\$</b>	<b>513.27</b>

**TOTAL CURRENT MONTH CHARGES** \$ **11,415.95**

**ADJUSTMENTS & SERVICE CHARGES**

SECURITY DEPOSIT INTEREST	\$	-0.01
<b>TOTAL ADJUSTMENTS &amp; SERVICE CHARGES</b>	<b>\$</b>	<b>-0.01</b>

**PREVIOUS BILL ACTIVITY**

Previous Balance	\$	16,343.27
Payment Amount (Date: 03/04/2014)	\$	-16,343.27
<b>BALANCE FORWARD</b>	<b>\$</b>	<b>0.00</b>

**AVERAGE DAILY CONSUMPTION**

Service	Meter	This Month	Last Month	Last Year
DEMAND	E008239991	35.00	35.00	454.00
ELECTRIC	E008239991	68.57	64.00	3960.00
ELECTRIC	EGRECVM101	2064.21	6059.80	0.00
BTU GAS	G17847979	0.00	0.00	0.00
<b>AVERAGE TEMPERATURE (High/Low)</b>		<b>69/45</b>	<b>64/42</b>	<b>71/47</b>
<b>MONTHLY RAINFALL (inches)</b>		<b>4.25</b>	<b>2.65</b>	<b>1.64</b>

**SERVICE AGREEMENT:** Use or consumption of services rendered by this City shall constitute an agreement by the consumer with the City to abide by the rules of the City with regard to its utility service, including, but not limited to prevailing ordinances and policies of this City and its departments.  
A 1.5% late fee will be charged for new charges not paid by 7 P.M. on your due date.  
Service disconnection may result from past due balances.

**MESSAGES**

THANK YOU FOR YOUR PAYMENT

Irrigation rules change during Daylight Saving Time. Businesses should irrigate on Tuesdays and Fridays. For irrigation tips and water rebate programs visit gru.com.

Go paperless. With eBill, you can get monthly email reminders to see your amount due, bill details and payment due date. Schedule a payment on our secure website. For details and sign up, visit gru.com.

Please tear off this portion and return it with your payment in the enclosed envelope.

**CHANGE OF MAILING ADDRESS**

Street: \_\_\_\_\_  
 City: \_\_\_\_\_  
 State: \_\_\_\_\_ Zip: \_\_\_\_\_  
 Telephone: \_\_\_\_\_  
 Email: \_\_\_\_\_

000159 BILLQ 159 T:

11201 NW US HIGHWAY 441  
GAINESVILLE FL 32653-8001

ACCOUNT# 2000-4670-6376

Please write account number on check and make check payable to: **GRU**

Payment Amount

Or pay online at [www.gru.com](http://www.gru.com)

**Current month charges due by 7pm on 04/07/2014**

**TOTAL AMOUNT DUE**

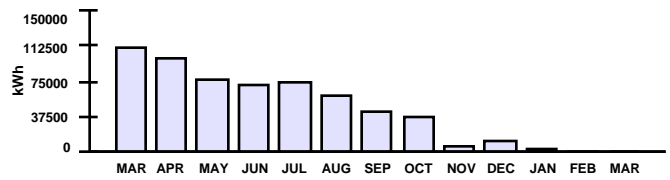
**\$ 11,415.94**

**GAINESVILLE REGIONAL UTILITIES**

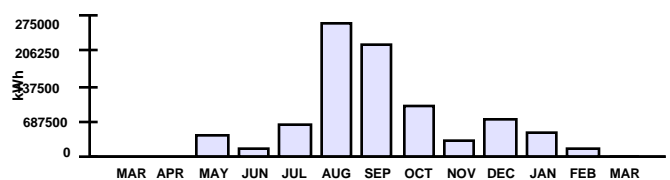
**Electric Service Details**

Meter Number	METER READING DATES Previous	METER READING DATES Present	Meter Read Type	Days of Service	METER READINGS Previous	METER READINGS Present	Meter Multiplier	Electric Consumption	Peak Demand	Next Meter Read on or About
E008239991	02/06/2014	03/05/2014	ACTUAL	28	2486	2490	480.0000	1,920 kWh	35 kW	03/31/2014
EGRECV101	02/06/2014	03/05/2014	ACTUAL	28	6846777	6904575	1.00000	57,798 kWh	N/A	03/31/2014

Description	Usage	Rate	Amount Billed
ELECTRIC CUSTOMER CHARGE		\$ 100.00	\$ 100.00
ENERGY USE	1,920	\$ 0.0450	\$ 86.40
ELECTRIC DEMAND	35	\$ 9.2500	\$ 323.75
ELECTRIC FUEL ADJUSTMENT	1,920	\$ 0.0690	\$ 132.48
FLORIDA GROSS RECEIPTS TAX			\$ 16.48
GAINESVILLE ELEC UTIL TAX			\$ 52.66
<b>Subtotal for meter E008239991</b>			<b>\$ 711.77</b>
-- IC 10/13 PRIMARY METER FOR GREC			



Description	Usage	Rate	Amount Billed
ELECTRIC CUSTOMER CHARGE		\$ 350.00	\$ 350.00
ENERGY USE	57,798	\$ 0.0387	\$ 2,236.79
ELECTRIC FUEL ADJUSTMENT	57,798	\$ 0.0690	\$ 3,988.06
FLORIDA GROSS RECEIPTS TAX			\$ 168.59
GAINESVILLE ELEC UTIL TAX			\$ 275.54
<b>Subtotal for meter EGRECV101</b>			<b>\$ 7,018.98</b>
-- GREC			
<b>Total for Electric Service Details</b>			<b>\$ 7,730.75</b>



**Gas Service Details**

Meter Number	METER READING DATES Previous	METER READING DATES Present	Meter Read Type	Days of Service	METER READINGS Previous	METER READINGS Present	Meter Multiplier	BTU Factor	Gas Consumption	Next Meter Read on or About
G17847979	02/01/2014	02/28/2014	ACTUAL	28	83099	83862	1.00000	1.01600	0 BTU	03/26/2014

Description	Usage	Rate	Amount Billed
NATURAL GAS USE	0	\$ 3,607.15	\$ 3,607.15
<b>Total for Gas Service Details</b>			<b>\$ 3,607.15</b>

**Water and Wastewater Service Details**

Description	Usage	Rate	Amount Billed
WASTEWATER CUSTOMER CHARGE		\$ 7.85	\$ 7.85
WASTEWATER BILLING	12	\$ 5.8500	\$ 70.20
<b>Total for Water and Wastewater Service Details</b>			<b>\$ 78.05</b>

**Customer Inquiries**

Customer Service	(352) 334-3434	Nationwide Toll-free Number	1-800-818-3436
Emergencies or Outages	(352) 334-2871	Stormwater Service	(352) 334-5070
		Solid Waste Service	(352) 334-2330

**Payment Information**

Make checks payable to GRU; return stub and check to: P.O. Box 147051, Gainesville, FL 32614-7051. You may also pay your bill online, by phone at 1-866-269-2881 or at a convenient location in your neighborhood. Visit [www.gru.com](http://www.gru.com) for details.

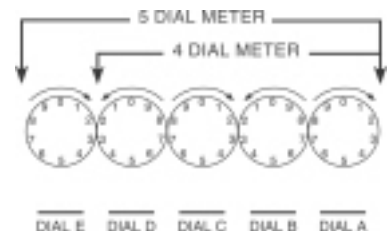
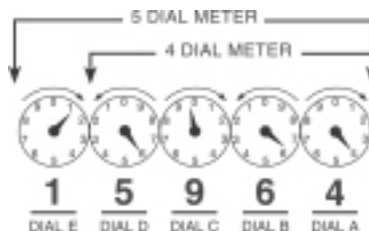
Lobby .....8 AM - 5 PM: M, T, Th, F and 9 AM - 5 PM: W

Drive-thru .....7:30 AM - 6 PM: M - F

Night depository payments will be posted the next business day if received after 3:30 PM weekdays.

**HOW TO READ YOUR METER**

Read the dials from right to left (A - E). If the dial hand is between two numbers, use the lower number.





Gainesville Regional Utilities  
301 S.E. 4 Avenue www.gru.com  
Gainesville FL 32601 352-334-3434

Account: 2000-4670-6376 Page 1 of 3  
Bill Date: 02/20/2014

GAINESVILLE RENEWABLE ENERGY CENTER PARTNER: 1000182581  
LLC 704000855059  
11201 NW US HWY 441 ROUTE: MULTIPLE  
GAINESVILLE FL 32653 NRES

Cash Security Deposit on File is \$120.00

ACCOUNT SUMMARY		
Current Month Charges:	\$	16,343.28
Adjustments & Service Charges	\$	-0.01
Balance Forward:	\$	0.00
<b>TOTAL AMOUNT DUE</b>	<b>\$</b>	<b>16,343.27</b>

**DUE BY 03/12/2014**

**SUMMARY OF SERVICES**

**UTILITIES** (See reverse for details about your utility charges.)

Electric	\$	13,437.81
Gas	\$	2,366.40
Wastewater	\$	83.90
<b>Total Utility Charge</b>	<b>\$</b>	<b>15,888.11</b>

**TAXES AND SURCHARGES**

Florida Gross Receipts Tax	\$	344.57
City of Gainesville Utility Tax	\$	110.60
<b>Total Taxes and Surcharges</b>	<b>\$</b>	<b>455.17</b>
<b>TOTAL CURRENT MONTH CHARGES</b>	<b>\$</b>	<b>16,343.28</b>

**ADJUSTMENTS & SERVICE CHARGES**

SECURITY DEPOSIT INTEREST	\$	-0.01
<b>TOTAL ADJUSTMENTS &amp; SERVICE CHARGES</b>	<b>\$</b>	<b>-0.01</b>

**PREVIOUS BILL ACTIVITY**

Previous Balance	\$	71,963.18
Payment Amount (Date: 01/30/2014)	\$	-71,963.18
<b>BALANCE FORWARD</b>	<b>\$</b>	<b>0.00</b>

**AVERAGE DAILY CONSUMPTION**

Service	Meter	This Month	Last Month	Last Year
DEMAND	E008239991	35.00	38.00	397.00
ELECTRIC	E008239991	64.00	116.36	4050.00
ELECTRIC	EGRECV101	6059.80	15471.45	0.00
ELECTRIC	EGRECV101	15471.45	26597.66	0.00
ELECTRIC	EGRECV101	26597.66	10287.39	0.00
ELECTRIC	EGRECV101	10287.39	35518.89	0.00
BTU GAS	G17847979	0.00	0.00	0.00
<b>AVERAGE TEMPERATURE (High/Low)</b>		64/42	71/47	74/47
<b>MONTHLY RAINFALL (inches)</b>		2.65	6.56	0.18

**SERVICE AGREEMENT:** Use or consumption of services rendered by this City shall constitute an agreement by the consumer with the City to abide by the rules of the City with regard to its utility service, including, but not limited to prevailing ordinances and policies of this City and its departments.  
A 1.5% late fee will be charged for new charges not paid by 7 P.M. on your due date. Service disconnection may result from past due balances.

**MESSAGES**

CURRENT CHARGES INCLUDE CORRECTION(S) FOR PREVIOUS UTILITY CHARGES

THANK YOU FOR YOUR PAYMENT

Pay your GRU bill anytime, anywhere. Pay your bill instantly by credit card on the phone or online. Call 1-866-269-2881 or visit gru.com.

Daylight Saving Time begins in March. Adjust your programmable thermostats and check all lighting timers to be sure they are turning interior and exterior lights on and off at appropriate times.

Please tear off this portion and return it with your payment in the enclosed envelope.

**CHANGE OF MAILING ADDRESS**

Street: \_\_\_\_\_  
 City: \_\_\_\_\_  
 State: \_\_\_\_\_ Zip: \_\_\_\_\_  
 Telephone: \_\_\_\_\_  
 Email: \_\_\_\_\_

ACCOUNT# **2000-4670-6376**

Please write account number on check and make check payable to: **GRU** \_\_\_\_\_  
 Payment Amount

Or pay online at [www.gru.com](http://www.gru.com)

**Current month charges due by 7pm on 03/12/2014**

<b>TOTAL AMOUNT DUE</b>
<b>\$ 16,343.27</b>

000359 BILLQ 359 T:

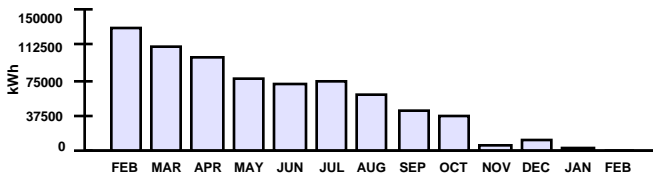
GAINESVILLE RENEWABLE ENERGY CENTER LLC  
 11201 NW US HIGHWAY 441  
 GAINESVILLE FL 32653-8001

GAINESVILLE REGIONAL UTILITIES

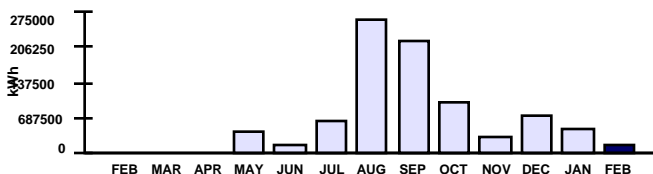
**Electric Service Details**

Meter Number	METER READING DATES		Meter Read Type	Days of Service	METER READINGS		Meter Multiplier	Electric Consumption	Peak Demand	Next Meter Read on or About
	Previous	Present			Previous	Present				
E008239991	01/07/2014	02/05/2014	ACTUAL	30	2482	2486	480.0000	1,920 kWh	35 kW	02/28/2014
EGRECV101	01/07/2014	02/05/2014	ACTUAL	30	6664983	6846777	1.00000	181,794 kWh	N/A	02/28/2014
EGRECV101	12/05/2013	01/06/2014	ACTUAL	33	6154425	6664983	1.00000	0 kWh	N/A	02/28/2014
EGRECV101	11/06/2013	12/04/2013	ACTUAL	29	5383093	6154425	1.00000	0 kWh	N/A	02/28/2014
EGRECV101	10/04/2013	11/05/2013	ACTUAL	33	5043609	5383093	1.00000	0 kWh	N/A	02/28/2014

Description	Usage	Rate	Amount Billed
ELECTRIC CUSTOMER CHARGE		\$ 100.00	\$ 100.00
ENERGY USE	1,920	\$ 0.0450	\$ 86.40
ELECTRIC DEMAND	35	\$ 9.2500	\$ 323.75
ELECTRIC FUEL ADJUSTMENT	1,920	\$ 0.0690	\$ 132.48
FLORIDA GROSS RECEIPTS TAX			\$ 16.48
GAINESVILLE ELEC UTIL TAX			\$ 52.66
<b>Subtotal for meter E008239991</b>			<b>\$ 711.77</b>
-- IC 10/13 PRIMARY METER FOR GREC			



Description	Usage	Rate	Amount Billed
ELECTRIC CUSTOMER CHARGE		\$ 350.00	\$ 350.00
ENERGY USE	181,794	\$ 0.0387	\$ 7,035.43
ELECTRIC FUEL ADJUSTMENT	181,794	\$ 0.0690	\$ 12,543.79
FLORIDA GROSS RECEIPTS TAX			\$ 511.01
GAINESVILLE ELEC UTIL TAX			\$ 789.64
<b>EGRECV101 From 01/07/2014 To 02/05/2014</b>			<b>\$ 21,229.87</b>
ENERGY USE	510,558	\$ 0.0818	\$ -2,246.45
ELECTRIC FUEL ADJUSTMENT	510,558	\$ 0.0710	\$ 36,249.62
ELECTRIC FUEL ADJUSTMENT	510,558	\$ 0.0710	\$ -36,249.62
FLORIDA GROSS RECEIPTS TAX			\$ -57.60
GAINESVILLE ELEC UTIL TAX			\$ -230.40
<b>EGRECV101 From 12/05/2013 To 01/06/2014</b>			<b>\$ -2,534.45</b>
ENERGY USE	771,332	\$ 0.0818	\$ -3,393.86
ELECTRIC FUEL ADJUSTMENT	771,332	\$ 0.0710	\$ 54,764.57
ELECTRIC FUEL ADJUSTMENT	771,332	\$ 0.0710	\$ -54,764.57
FLORIDA GROSS RECEIPTS TAX			\$ -87.02
GAINESVILLE ELEC UTIL TAX			\$ -348.09
<b>EGRECV101 From 11/06/2013 To 12/04/2013</b>			<b>\$ -3,828.97</b>
ENERGY USE	339,484	\$ 0.0818	\$ -1,493.73
ELECTRIC FUEL ADJUSTMENT	339,484	\$ 0.0540	\$ 18,332.14
ELECTRIC FUEL ADJUSTMENT	339,484	\$ 0.0540	\$ -18,332.14
FLORIDA GROSS RECEIPTS TAX			\$ -38.30
GAINESVILLE ELEC UTIL TAX			\$ -153.21
<b>EGRECV101 From 10/04/2013 To 11/05/2013</b>			<b>\$ -1,685.24</b>
<b>Subtotal for meter EGRECV101</b>			<b>\$ 13,181.21</b>
-- GREC			
<b>Total for Electric Service Details</b>			<b>\$ 13,892.98</b>



**Gas Service Details**

Meter Number	METER READING DATES		Meter Read Type	Days of Service	METER READINGS		Meter Multiplier	BTU Factor	Gas Consumption	Next Meter Read on or About
	Previous	Present			Previous	Present				
G17847979	01/01/2014	01/31/2014	ACTUAL	31	82517	83099	1.00000	1.01500	0 BTU	02/25/2014

Continued On Next Page

**Customer Inquiries**

Customer Service	(352) 334-3434	Nationwide Toll-free Number	1-800-818-3436
Emergencies or Outages	(352) 334-2871	Stormwater Service	(352) 334-5070
		Solid Waste Service	(352) 334-2330

**Payment Information**

Make checks payable to GRU, return stub and check to: P.O. Box 147051, Gainesville, FL 32614-7051. You may also pay your bill online, by phone at 1-866-269-2881 or at a convenient location in your neighborhood. Visit [www.gru.com](http://www.gru.com) for details.

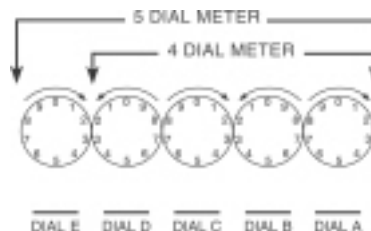
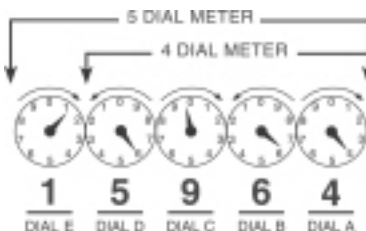
Lobby .....8 AM - 5 PM: M, T, Th, F and 9 AM - 5 PM: W

Drive-thru .....7:30 AM - 6 PM: M - F

Night depository payments will be posted the next business day if received after 3:30 PM weekdays.

**HOW TO READ YOUR METER**

Read the dials from right to left (A - E). If the dial hand is between two numbers, use the lower number.



*Continued From Previous Page*

Description	Usage	Rate	Amount Billed
NATURAL GAS USE	0		\$ 2,366.40
<b>Total for Gas Service Details</b>			<b>\$ 2,366.40</b>

**Water and Wastewater Service Details**

Description	Usage	Rate	Amount Billed
WASTEWATER CUSTOMER CHARGE		\$ 7.85	\$ 7.85
WASTEWATER BILLING	13	\$ 5.8500	\$ 76.05
<b>Total for Water and Wastewater Service Details</b>			<b>\$ 83.90</b>





Gainesville Regional Utilities  
301 S.E. 4 Avenue www.gru.com  
Gainesville FL 32601 352-334-3434

Account: 2000-4670-6376  
Bill Date: 01/16/2014

100 YEARS of SERVICE | 1912-2012

GAINESVILLE RENEWABLE ENERGY CENTER PARTNER: 1000182581  
LLC 704000843989  
11201 NW US HWY 441 ROUTE: MULTIPLE  
GAINESVILLE FL 32653 NRES

Cash Security Deposit on File is \$120.00

ACCOUNT SUMMARY

Current Month Charges:	\$	71,963.18
Adjustments & Service Charges	\$	0.00
Balance Forward:	\$	0.00
<b>TOTAL AMOUNT DUE</b>	<b>\$</b>	<b>71,963.18</b>

**DUE BY 02/05/2014**

SUMMARY OF SERVICES

**UTILITIES** (See reverse for details about your utility charges.)

Electric	\$	59,501.61
Gas	\$	8,389.79
Wastewater	\$	95.60
<b>Total Utility Charge</b>	<b>\$</b>	<b>67,987.00</b>

TAXES AND SURCHARGES

Florida Gross Receipts Tax	\$	1,525.68
City of Gainesville Utility Tax	\$	2,450.50
<b>Total Taxes and Surcharges</b>	<b>\$</b>	<b>3,976.18</b>

**TOTAL CURRENT MONTH CHARGES \$ 71,963.18**

PREVIOUS BILL ACTIVITY

Previous Balance	\$	112,430.38
Payment Amount (Date: 01/02/2014)	\$	-109,759.79
Payment Amount (Date: 12/23/2013)	\$	-2,670.59
<b>BALANCE FORWARD</b>	<b>\$</b>	<b>0.00</b>

AVERAGE DAILY CONSUMPTION

Service	Meter	This Month	Last Month	Last Year
DEMAND	E008239991	38.00	80.00	404.00
ELECTRIC	E008239991	116.36	480.00	4474.84
ELECTRIC	EGRECVM101	15471.45	26597.66	0.00
BTU GAS	G17847979	0.00	0.00	0.00
<b>AVERAGE TEMPERATURE (High/Low)</b>		<b>71/47</b>	<b>75/53</b>	<b>70/47</b>
<b>MONTHLY RAINFALL (inches)</b>		<b>6.56</b>	<b>2.05</b>	<b>7.08</b>

**SERVICE AGREEMENT:** Use or consumption of services rendered by this City shall constitute an agreement by the consumer with the City to abide by the rules of the City with regard to its utility service, including, but not limited to prevailing ordinances and policies of this City and its departments. A 1.5% late fee will be charged for new charges not paid by 7 P.M. on your due date. Service disconnection may result from past due balances.

MESSAGES

THANK YOU FOR YOUR PAYMENT

GRU's energy and water surveys can help your business find ways to save money and improve comfort. Our trained staff will inspect your business at no charge. To schedule a survey call 352-393-1460.

Please tear off this portion and return it with your payment in the enclosed envelope.

CHANGE OF MAILING ADDRESS

Street: \_\_\_\_\_  
 City: \_\_\_\_\_  
 State: \_\_\_\_\_ Zip: \_\_\_\_\_  
 Telephone: \_\_\_\_\_  
 Email: \_\_\_\_\_

ACCOUNT# 2000-4670-6376

Please write account number on check and make check payable to: **GRU**

Payment Amount

Or pay online at [www.gru.com](http://www.gru.com)

**Current month charges due by 7pm on 02/05/2014**

TOTAL AMOUNT DUE

**\$ 71,963.18**

000232 BILLQ 232 T:

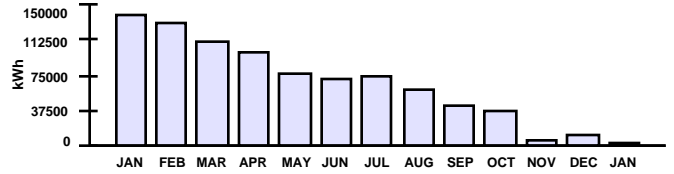
GAINESVILLE RENEWABLE ENERGY CENTER LLC  
 11201 NW US HIGHWAY 441  
 GAINESVILLE FL 32653-8001

GAINESVILLE REGIONAL UTILITIES

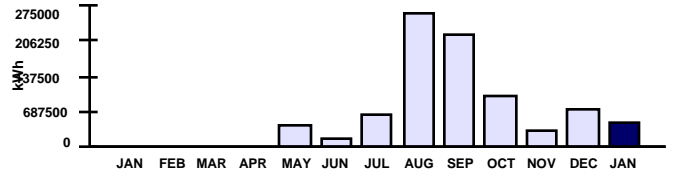
**Electric Service Details**

Meter Number	METER READING DATES Previous	METER READING DATES Present	Meter Read Type	Days of Service	METER READINGS Previous	METER READINGS Present	Meter Multiplier	Electric Consumption	Peak Demand	Next Meter Read on or About
E008239991	12/05/2013	01/06/2014	ACTUAL	33	2474	2482	480.0000	3,840 kWh	38 kW	01/31/2014
EGRECV101	12/05/2013	01/06/2014	ACTUAL	33	6154425	6664983	1.00000	510.558 kWh	N/A	01/31/2014

Description	Usage	Rate	Amount Billed
ELECTRIC CUSTOMER CHARGE		\$ 100.00	\$ 100.00
ENERGY USE	3,840	\$ 0.0450	\$ 172.80
ELECTRIC DEMAND	38	\$ 9.2500	\$ 351.50
ELECTRIC FUEL ADJUSTMENT	3,840	\$ 0.0710	\$ 272.64
FLORIDA GROSS RECEIPTS TAX			\$ 23.00
GAINESVILLE ELEC UTIL TAX			\$ 64.73
<b>Subtotal for meter E008239991</b>			<b>\$ 984.67</b>
-- IC 10/13 PRIMARY METER FOR GREC			



Description	Usage	Rate	Amount Billed
ELECTRIC CUSTOMER CHARGE		\$ 350.00	\$ 350.00
ENERGY USE	510,558	\$ 0.0431	\$ 22,005.05
ELECTRIC FUEL ADJUSTMENT	510,558	\$ 0.0710	\$ 36,249.62
FLORIDA GROSS RECEIPTS TAX			\$ 1,502.68
GAINESVILLE ELEC UTIL TAX			\$ 2,385.77
<b>Subtotal for meter EGRECV101</b>			<b>\$ 62,493.12</b>
-- GREC			
<b>Total for Electric Service Details</b>			<b>\$ 63,477.79</b>



**Gas Service Details**

Meter Number	METER READING DATES Previous	METER READING DATES Present	Meter Read Type	Days of Service	METER READINGS Previous	METER READINGS Present	Meter Multiplier	BTU Factor	Gas Consumption	Next Meter Read on or About
G17847979	12/01/2013	12/31/2013	ACTUAL	31	80352	82517	1.00000	1.01500	0 BTU	01/28/2014

Description	Usage	Rate	Amount Billed
NATURAL GAS USE	0	\$ 8,389.79	\$ 8,389.79
<b>Total for Gas Service Details</b>			<b>\$ 8,389.79</b>

**Water and Wastewater Service Details**

Description	Usage	Rate	Amount Billed
WASTEWATER CUSTOMER CHARGE		\$ 7.85	\$ 7.85
WASTEWATER BILLING	15	\$ 5.8500	\$ 87.75
<b>Total for Water and Wastewater Service Details</b>			<b>\$ 95.60</b>

**Customer Inquiries**

Customer Service	(352) 334-3434	Nationwide Toll-free Number	1-800-818-3436
Emergencies or Outages	(352) 334-2871	Stormwater Service	(352) 334-5070
		Solid Waste Service	(352) 334-2330

**Payment Information**

Make checks payable to GRU, return stub and check to: P.O. Box 147051, Gainesville, FL 32614-7051. You may also pay your bill online, by phone at 1-866-269-2881 or at a convenient location in your neighborhood. Visit [www.gru.com](http://www.gru.com) for details.

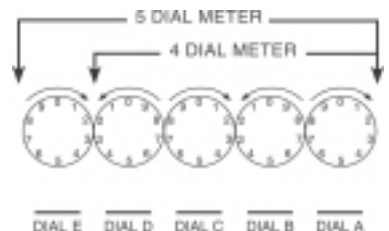
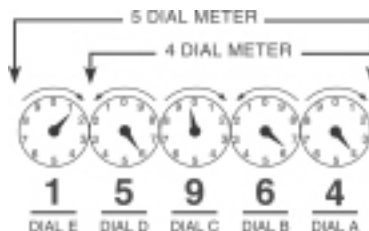
Lobby .....8 AM - 5 PM: M, T, Th, F and 9 AM - 5 PM: W

Drive-thru .....7:30 AM - 6 PM: M - F

Night depository payments will be posted the next business day if received after 3:30 PM weekdays.

**HOW TO READ YOUR METER**

Read the dials from right to left (A - E). If the dial hand is between two numbers, use the lower number.







Gainesville Regional Utilities  
301 S.E. 4 Avenue www.gru.com  
Gainesville FL 32601 352-334-3434

Account: 2000-4670-6376  
Bill Date: 12/17/2013

100 YEARS of SERVICE | 1912-2012

GAINESVILLE RENEWABLE ENERGY CENTER PARTNER: 1000182581  
LLC 704000833919  
11201 NW US HWY 441 ROUTE: MULTIPLE  
GAINESVILLE FL 32653 NRES

Cash Security Deposit on File is \$120.00

ACCOUNT SUMMARY

Current Month Charges:	\$ 112,430.39
Adjustments & Service Charges	\$ -2,670.60
Balance Forward:	\$ 2,670.59
<b>TOTAL AMOUNT DUE</b>	<b>\$ 112,430.38</b>

**DUE BY 01/06/2014**

SUMMARY OF SERVICES

**UTILITIES** (See reverse for details about your utility charges.)

Electric	\$ 90,813.70
Gas	\$ 15,459.46
Wastewater	\$ 89.75
<b>Total Utility Charge</b>	<b>\$ 106,362.91</b>

TAXES AND SURCHARGES

Florida Gross Receipts Tax	\$ 2,328.55
City of Gainesville Utility Tax	\$ 3,738.93
<b>Total Taxes and Surcharges</b>	<b>\$ 6,067.48</b>

**TOTAL CURRENT MONTH CHARGES \$ 112,430.39**

ADJUSTMENTS & SERVICE CHARGES

REVERSED MONTHLY BILL	\$ -2,670.59
SECURITY DEPOSIT INTEREST	\$ -0.01
<b>TOTAL ADJUSTMENTS &amp; SERVICE CHARGES</b>	<b>\$ -2,670.60</b>

PREVIOUS BILL ACTIVITY

Previous Balance	\$ 2,670.59
<b>BALANCE FORWARD</b>	<b>\$ 2,670.59</b>

AVERAGE DAILY CONSUMPTION

Service	Meter	This Month	Last Month	Last Year
DEMAND	E008239991	80.00	52.00	430.00
ELECTRIC	E008239991	480.00	432.00	4470.00
ELECTRIC	EGRECVM101	26597.66	10287.39	0.00
BTU GAS	G17847979	0.00	0.00	0.00
<b>AVERAGE TEMPERATURE (High/Low)</b>		<b>75/53</b>	<b>81/57</b>	<b>73/48</b>
<b>MONTHLY RAINFALL (inches)</b>		<b>2.05</b>	<b>1.29</b>	<b>0.05</b>

**SERVICE AGREEMENT:** Use or consumption of services rendered by this City shall constitute an agreement by the consumer with the City to abide by the rules of the City with regard to its utility service, including, but not limited to prevailing ordinances and policies of this City and its departments. A 1.5% late fee will be charged for new charges not paid by 7 P.M. on your due date. Service disconnection may result from past due balances.

MESSAGES

Please visit gru.com to see the most up-to-date rates and charges including base rates and fuel adjustments.

Please tear off this portion and return it with your payment in the enclosed envelope.

CHANGE OF MAILING ADDRESS

Street: \_\_\_\_\_  
City: \_\_\_\_\_  
State: \_\_\_\_\_ Zip: \_\_\_\_\_  
Telephone: \_\_\_\_\_  
Email: \_\_\_\_\_

ACCOUNT# 2000-4670-6376

Please write account number on check and make check payable to: **GRU**

Payment Amount

Or pay online at [www.gru.com](http://www.gru.com)

**Current month charges due by 7pm on 01/06/2014**

TOTAL AMOUNT DUE

**\$ 112,430.38**

000095 BILLQ 95 T:

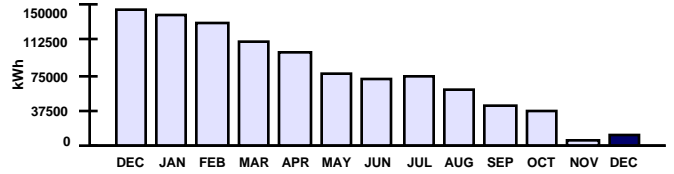
GAINESVILLE RENEWABLE ENERGY CENTER LLC  
11201 NW US HIGHWAY 441  
GAINESVILLE FL 32653-8001

GAINESVILLE REGIONAL UTILITIES

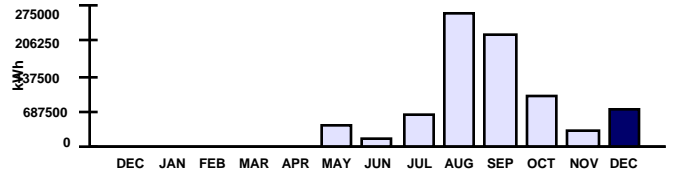
**Electric Service Details**

Meter Number	METER READING DATES Previous	METER READING DATES Present	Meter Read Type	Days of Service	METER READINGS Previous	METER READINGS Present	Meter Multiplier	Electric Consumption	Peak Demand	Next Meter Read on or About
E008239991	11/06/2013	12/04/2013	ACTUAL	29	2445	2474	480.0000	13,920 kWh	80 kW	12/31/2013
EGRECV101	11/06/2013	12/04/2013	ACTUAL	29	5383093	6154425	1.00000	771,332 kWh	N/A	12/31/2013

Description	Usage	Rate	Amount Billed
ELECTRIC CUSTOMER CHARGE		\$ 100.00	\$ 100.00
ENERGY USE	13,920	\$ 0.0450	\$ 626.40
ELECTRIC DEMAND	80	\$ 9.2500	\$ 740.00
ELECTRIC FUEL ADJUSTMENT	13,920	\$ 0.0710	\$ 988.32
FLORIDA GROSS RECEIPTS TAX			\$ 62.94
GAINESVILLE ELEC UTIL TAX			\$ 152.93
<b>Subtotal for meter E008239991</b>			<b>\$ 2,670.59</b>
-- IC 10/13 PRIMARY METER FOR GREC			



Description	Usage	Rate	Amount Billed
ELECTRIC CUSTOMER CHARGE		\$ 350.00	\$ 350.00
ENERGY USE	771,332	\$ 0.0431	\$ 33,244.41
ELECTRIC FUEL ADJUSTMENT	771,332	\$ 0.0710	\$ 54,764.57
FLORIDA GROSS RECEIPTS TAX			\$ 2,265.61
GAINESVILLE ELEC UTIL TAX			\$ 3,586.00
<b>Subtotal for meter EGRECV101</b>			<b>\$ 94,210.59</b>
-- GREC			
<b>Total for Electric Service Details</b>			<b>\$ 96,881.18</b>



**Gas Service Details**

Meter Number	METER READING DATES Previous	METER READING DATES Present	Meter Read Type	Days of Service	METER READINGS Previous	METER READINGS Present	Meter Multiplier	BTU Factor	Gas Consumption	Next Meter Read on or About
G17847979	11/01/2013	11/30/2013	ACTUAL	30	76083	80352	1.00000	1.01500	0 BTU	12/24/2013

Description	Usage	Rate	Amount Billed
NATURAL GAS USE	0	\$ 15,459.46	\$ 15,459.46
<b>Total for Gas Service Details</b>			<b>\$ 15,459.46</b>

**Water and Wastewater Service Details**

Description	Usage	Rate	Amount Billed
WASTEWATER CUSTOMER CHARGE		\$ 7.85	\$ 7.85
WASTEWATER BILLING	14	\$ 5.8500	\$ 81.90
<b>Total for Water and Wastewater Service Details</b>			<b>\$ 89.75</b>

**Customer Inquiries**

Customer Service	(352) 334-3434	Nationwide Toll-free Number	1-800-818-3436
Emergencies or Outages	(352) 334-2871	Stormwater Service	(352) 334-5070
		Solid Waste Service	(352) 334-2330

**Payment Information**

Make checks payable to GRU; return stub and check to: P.O. Box 147051, Gainesville, FL 32614-7051. You may also pay your bill online, by phone at 1-866-269-2881 or at a convenient location in your neighborhood. Visit [www.gru.com](http://www.gru.com) for details.

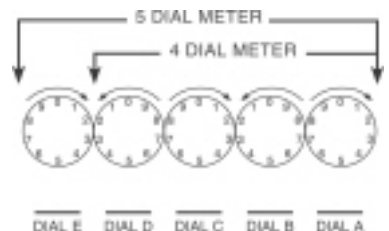
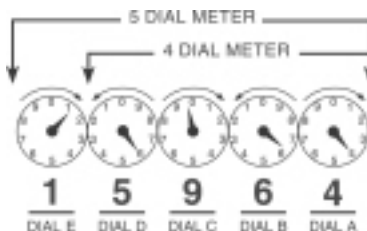
Lobby .....8 AM - 5 PM: M, T, Th, F and 9 AM - 5 PM: W

Drive-thru .....7:30 AM - 6 PM: M - F

Night depository payments will be posted the next business day if received after 3:30 PM weekdays.

**HOW TO READ YOUR METER**

Read the dials from right to left (A - E). If the dial hand is between two numbers, use the lower number.





Gainesville Regional Utilities
301 S.E. 4 Avenue
Gainesville FL 32601
www.gru.com
352-334-3434

Account: 2000-4670-6376 Page 1 of 2
Bill Date: 11/18/2013

100 YEARS of SERVICE | 1912-2012

GAINESVILLE RENEWABLE ENERGY CENTER PARTNER: 1000182581
LLC 703000836768
11201 NW US HWY 441 ROUTE: MULTIPLE
GAINESVILLE FL 32653 NRES

Cash Security Deposit on File is \$120.00

SUMMARY OF SERVICES

Table with 2 columns: Utility Name, Amount. Includes Electric (\$34,750.26), Gas (\$6,105.62), Wastewater (\$83.90), Total Utility Charge (\$40,939.78).

Table with 2 columns: Tax/Surcharge Name, Amount. Includes Florida Gross Receipts Tax (\$891.03), City of Gainesville Utility Tax (\$1,684.26), Total Taxes and Surcharges (\$2,575.29), TOTAL CURRENT MONTH CHARGES (\$43,515.07).

Table with 2 columns: Adjustment Name, Amount. Includes MISCELLANEOUS CREDIT (\$-1,954.30), LATE FEE (\$1,954.30), SECURITY DEPOSIT INTEREST (\$-0.01), TOTAL ADJUSTMENTS & SERVICE CHARGES (\$-0.01).

Table with 2 columns: Activity Name, Amount. Includes Previous Balance (\$130,286.72), Payment Amount (Date: 11/14/2013) (\$-130,286.72), BALANCE FORWARD (\$0.00).

ACCOUNT SUMMARY table showing Current Month Charges (\$43,515.07), Adjustments & Service Charges (\$-0.01), Balance Forward (\$0.00), and TOTAL AMOUNT DUE (\$43,515.06) DUE BY 12/08/2013.

AVERAGE DAILY CONSUMPTION table with columns: Service, Meter, This Month, Last Month, Last Year. Includes DEMAND, ELECTRIC, and BTU GAS.

SERVICE AGREEMENT: Use or consumption of services rendered by this City shall constitute an agreement by the consumer with the City to abide by the rules of the City with regard to its utility service, including, but not limited to prevailing ordinances and policies of this City and its departments.

MESSAGES

- GRU business customers will see changes to their utility bills beginning on October 1 based on the budget approved by the City Commission in September.
The City Commission approved changes in the fuel adjustment portion of customer bills for October and November, therefore customers will see a decrease in their overall base rate and an increase in the fuel adjustment rate from \$0.039/kWh to \$0.054/kWh for those months.
A new business natural gas rate that includes a lower customer charge but higher non-fuel energy charge is available. Customers who consistently use low volumes of gas may save money with this rate. Visit gru.com to learn more about the new rate.
Wastewater charges are based either on your monthly usage or your winter max - whichever is lower. Winter max is determined by the amount of water used in December and January, appearing on the January and February bills. Lower your bill all year by conserving water now. For ways to save, visit www.gru.com.

Please tear off this portion and return it with your payment in the enclosed envelope.

CHANGE OF MAILING ADDRESS

Form fields for Street, City, State, Zip, Telephone, and Email.

ACCOUNT# 2000-4670-6376

Please write account number on check and make check payable to: GRU Payment Amount

Or pay online at www.gru.com

Current month charges due by 7pm on 12/08/2013

Table with 1 row: TOTAL AMOUNT DUE \$ 43,515.06

000806 BILLQ 806 T:

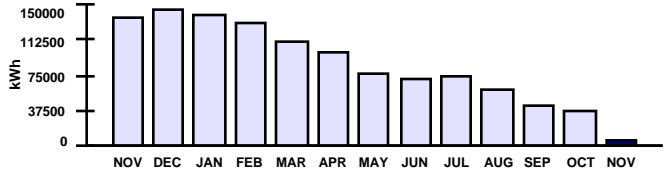
GAINESVILLE RENEWABLE ENERGY CENTER LLC
11201 NW US HIGHWAY 441
GAINESVILLE FL 32653-8001

GAINESVILLE REGIONAL UTILITIES

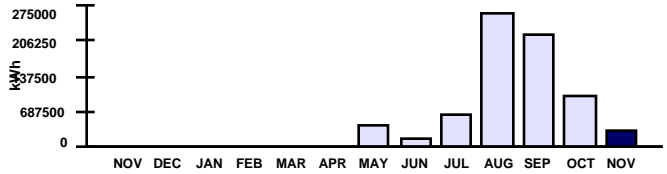
**Electric Service Details**

Meter Number	METER READING DATES Previous	METER READING DATES Present	Meter Read Type	Days of Service	METER READINGS Previous	METER READINGS Present	Meter Multiplier	Electric Consumption	Peak Demand	Next Meter Read on or About
E008239991	10/17/2013	11/05/2013	ACTUAL	20	2427	2445	480.0000	8,640 kWh	52 kW	11/27/2013
EGRECV101	10/04/2013	11/05/2013	ACTUAL	33	5043609	5383093	1.00000	339,484 kWh	N/A	11/27/2013

Description	Usage	Rate	Amount Billed
ELECTRIC CUSTOMER CHARGE		\$ 100.00	\$ 100.00
ENERGY USE	8,640	\$ 0.0450	\$ 388.80
ELECTRIC DEMAND	52	\$ 9.2500	\$ 481.00
ELECTRIC FUEL ADJUSTMENT	8,640	\$ 0.0540	\$ 466.56
FLORIDA GROSS RECEIPTS TAX			\$ 36.83
GAINESVILLE ELEC UTIL TAX			\$ 100.66
<b>Subtotal for meter E008239991</b>			<b>\$ 1,573.85</b>
-- IC 10/13 PRIMARY METER FOR GREC			



Description	Usage	Rate	Amount Billed
ELECTRIC CUSTOMER CHARGE		\$ 350.00	\$ 350.00
ENERGY USE	339,484	\$ 0.0431	\$ 14,631.76
ELECTRIC FUEL ADJUSTMENT	339,484	\$ 0.0540	\$ 18,332.14
FLORIDA GROSS RECEIPTS TAX			\$ 854.20
GAINESVILLE ELEC UTIL TAX			\$ 1,583.60
<b>Subtotal for meter EGRECV101</b>			<b>\$ 35,751.70</b>
-- GREC			
<b>Total for Electric Service Details</b>			<b>\$ 37,325.55</b>



**Gas Service Details**

Meter Number	METER READING DATES Previous	METER READING DATES Present	Meter Read Type	Days of Service	METER READINGS Previous	METER READINGS Present	Meter Multiplier	BTU Factor	Gas Consumption	Next Meter Read on or About
G17847979	10/01/2013	10/31/2013	INTERNAL	31	74570	76083	1.00000	1.01500	0 BTU	11/22/2013

Description	Usage	Rate	Amount Billed
NATURAL GAS USE	0	\$ 6,105.62	\$ 6,105.62
<b>Total for Gas Service Details</b>			<b>\$ 6,105.62</b>

**Water and Wastewater Service Details**

Description	Usage	Rate	Amount Billed
WASTEWATER CUSTOMER CHARGE		\$ 7.85	\$ 7.85
WASTEWATER BILLING	13	\$ 5.8500	\$ 76.05
<b>Total for Water and Wastewater Service Details</b>			<b>\$ 83.90</b>

**Customer Inquiries**

Customer Service	(352) 334-3434	Nationwide Toll-free Number	1-800-818-3436
Emergencies or Outages	(352) 334-2871	Stormwater Service	(352) 334-5070
		Solid Waste Service	(352) 334-2330

**Payment Information**

Make checks payable to GRU, return stub and check to: P.O. Box 147051, Gainesville, FL 32614-7051. You may also pay your bill online, by phone at 1-866-269-2881 or at a convenient location in your neighborhood. Visit [www.gru.com](http://www.gru.com) for details.

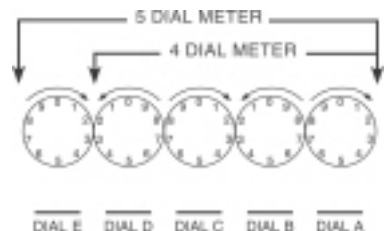
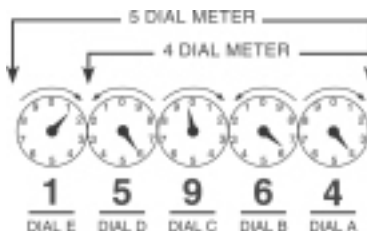
Lobby .....8 AM - 5 PM: M, T, Th, F and 9 AM - 5 PM: W

Drive-thru .....7:30 AM - 6 PM: M - F

Night depository payments will be posted the next business day if received after 3:30 PM weekdays.

**HOW TO READ YOUR METER**

Read the dials from right to left (A - E). If the dial hand is between two numbers, use the lower number.





Gainesville Regional Utilities
301 S.E. 4 Avenue
Gainesville FL 32601
www.gru.com
352-334-3434

Account: 2000-4670-6376 Page 1 of 2
Bill Date: 10/17/2013

GAINESVILLE RENEWABLE ENERGY CENTER PARTNER: 1000182581
LLC 705000801507
11201 NW US HWY 441 ROUTE: MULTIPLE
GAINESVILLE FL 32653 NRES

Cash Security Deposit on File is \$120.00

ACCOUNT SUMMARY table with columns: Description, Amount. Rows include Current Month Charges, Adjustments & Service Charges, Balance Forward, and TOTAL AMOUNT DUE \$ 130,286.72 DUE BY 11/06/2013

SUMMARY OF SERVICES

UTILITIES (See reverse for details about your utility charges.) table with columns: Utility, Amount. Rows include Electric, Gas, Wastewater, and Total Utility Charge \$ 130,029.96

TAXES AND SURCHARGES table with columns: Tax, Amount. Rows include Florida Gross Receipts Tax, City of Gainesville Utility Tax, and Total Taxes and Surcharges \$ 7,055.02

TOTAL CURRENT MONTH CHARGES \$ 137,084.98

ADJUSTMENTS & SERVICE CHARGES

Table with columns: Adjustment, Amount. Rows include TURN ON CHARGES, REVERSED LATE FEE, SECURITY DEPOSIT INTEREST, and TOTAL ADJUSTMENTS & SERVICE CHARGES \$ -6,798.26

PREVIOUS BILL ACTIVITY

Table with columns: Activity, Amount. Rows include Previous Balance, Payment Amount (Date: 10/07/2013), and BALANCE FORWARD \$ 0.00

AVERAGE DAILY CONSUMPTION

Table with columns: Service, Meter, This Month, Last Month, Last Year. Rows include ELECTRIC, BTU GAS, AVERAGE TEMPERATURE (High/Low), and MONTHLY RAINFALL (inches)

SERVICE AGREEMENT: Use or consumption of services rendered by this City shall constitute an agreement by the consumer with the City to abide by the rules of the City with regard to its utility service, including, but not limited to prevailing ordinances and policies of this City and its departments.

MESSAGES

- THANK YOU FOR YOUR PAYMENT
GRU business customers will see changes to their utility bills beginning on October 1 based on the budget approved by the City Commission in September.
The City Commission approved changes in the fuel adjustment portion of customer bills for October and November, therefore customers will see a decrease in their overall base rate and an increase in the fuel adjustment rate from \$0.039/kWh to \$0.054/kWh for those months.
A new business natural gas rate that includes a lower customer charge but higher non-fuel energy charge is available. Customers who consistently use low volumes of gas may save money with this rate. Visit gru.com to learn more about the new rate.
Go Paperless. With eBill, you can get monthly e-mail reminders to see your amount due, bill details and due date. Schedule a payment with a few clicks of the mouse on our secure website. For details and sign up, visit www.gru.com.

Please tear off this portion and return it with your payment in the enclosed envelope.

CHANGE OF MAILING ADDRESS

Street: \_\_\_\_\_
City: \_\_\_\_\_
State: \_\_\_\_\_ Zip: \_\_\_\_\_
Telephone: \_\_\_\_\_
Email: \_\_\_\_\_

ACCOUNT# 2000-4670-6376

Please write account number on check and make check payable to: GRU Payment Amount

Or pay online at www.gru.com

Current month charges due by 7pm on 11/06/2013

TOTAL AMOUNT DUE \$ 130,286.72

000007 PL : 7 (BILLING / Seq#7)

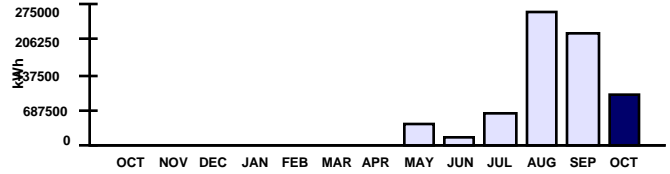
GAINESVILLE RENEWABLE ENERGY CENTER LLC
11201 NW US HIGHWAY 441
GAINESVILLE FL 32653-8001

GAINESVILLE REGIONAL UTILITIES

**Electric Service Details**

Meter Number	METER READING DATES Previous	METER READING DATES Present	Meter Read Type	Days of Service	METER READINGS Previous	METER READINGS Present	Meter Multiplier	Electric Consumption	Peak Demand	Next Meter Read on or About
EGRECVM101	09/06/2013	10/03/2013	ACTUAL	28	4049080	5043609	1.00000	994.529 kWh	N/A	11/05/2013

Description	Usage	Rate	Amount Billed
ELECTRIC CUSTOMER CHARGE		\$ 350.00	\$ 350.00
ENERGY USE	994,529	\$ 0.0431	\$ 42,864.20
ELECTRIC FUEL ADJUSTMENT	994,529	\$ 0.0540	\$ 53,704.57
FLORIDA GROSS RECEIPTS TAX			\$ 2,485.09
GAINESVILLE ELEC UTIL TAX -- GREC			\$ 4,569.93
<b>Total for Electric Service Details</b>			<b>\$ 103,973.79</b>



**Gas Service Details**

Meter Number	METER READING DATES Previous	METER READING DATES Present	Meter Read Type	Days of Service	METER READINGS Previous	METER READINGS Present	Meter Multiplier	BTU Factor	Gas Consumption	Next Meter Read on or About
G17847979	09/01/2013	09/30/2013	INTERNAL	30	67317	74570	1.00000	1.01500	0 BTU	10/26/2013

Description	Usage	Rate	Amount Billed
NATURAL GAS USE	0	\$ 33,038.99	\$ 33,038.99
<b>Total for Gas Service Details</b>			<b>\$ 33,038.99</b>

**Water and Wastewater Service Details**

Description	Usage	Rate	Amount Billed
WASTEWATER CUSTOMER CHARGE		\$ 7.85	\$ 7.85
WASTEWATER BILLING	11	\$ 5.8500	\$ 64.35
<b>Total for Water and Wastewater Service Details</b>			<b>\$ 72.20</b>

**Customer Inquiries**

Customer Service	(352) 334-3434	Nationwide Toll-free Number	1-800-818-3436
Emergencies or Outages	(352) 334-2871	Stormwater Service	(352) 334-5070
		Solid Waste Service	(352) 334-2330

**Payment Information**

Make checks payable to GRU; return stub and check to: P.O. Box 147051, Gainesville, FL 32614-7051. You may also pay your bill online, by phone at 1-866-269-2881 or at a convenient location in your neighborhood. Visit [www.gru.com](http://www.gru.com) for details.

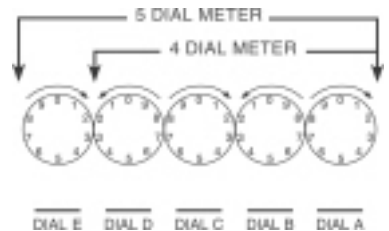
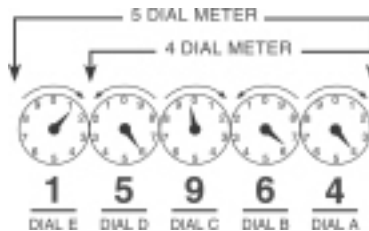
Lobby .....8 AM - 5 PM: M, T, Th, F and 9 AM - 5 PM: W

Drive-thru .....7:30 AM - 6 PM: M - F

Night depository payments will be posted the next business day if received after 3:30 PM weekdays.

**HOW TO READ YOUR METER**

Read the dials from right to left (A - E). If the dial hand is between two numbers, use the lower number.





Gainesville Regional Utilities
301 S.E. 4 Avenue
Gainesville FL 32601
www.gru.com
352-334-3434

Account: 2000-4670-6376 Page 1 of 2
Bill Date: 09/19/2013

100 YEARS of SERVICE | 1912-2012

GAINESVILLE RENEWABLE ENERGY CENTER PARTNER: 1000182581
LLC 707000764317
11201 NW US HWY 441 ROUTE: MULTIPLE
GAINESVILLE FL 32653 NRES

Cash Security Deposit on File is \$120.00

SUMMARY OF SERVICES

Table with 2 columns: Utility Name, Amount. Includes Electric (\$177,464.74), Gas (\$87,320.16), Wastewater (\$245.20), Total Utility Charge (\$265,030.10).

TAXES AND SURCHARGES

Table with 2 columns: Tax Name, Amount. Includes Florida Gross Receipts Tax (\$4,550.37), City of Gainesville Utility Tax (\$9,785.65), Total Taxes and Surcharges (\$14,336.02), TOTAL CURRENT MONTH CHARGES (\$279,366.12).

ADJUSTMENTS & SERVICE CHARGES

Table with 2 columns: Adjustment Name, Amount. Includes MISCELLANEOUS CREDIT (\$-23,502.46), LATE FEE (\$6,858.22), SECURITY DEPOSIT INTEREST (\$-0.04), TOTAL ADJUSTMENTS & SERVICE CHARGES (\$-16,644.28).

PREVIOUS BILL ACTIVITY

Table with 2 columns: Activity Name, Amount. Includes Previous Balance (\$457,214.70), Payment Amount (Date: 09/09/2013) (\$-457,214.70), BALANCE FORWARD (\$0.00).

ACCOUNT SUMMARY

Table with 2 columns: Description, Amount. Includes Current Month Charges (\$279,366.12), Adjustments & Service Charges (\$-16,644.28), Balance Forward (\$0.00), TOTAL AMOUNT DUE (\$262,721.84) DUE BY 10/09/2013.

AVERAGE DAILY CONSUMPTION

Table with 5 columns: Service, Meter, This Month, Last Month, Last Year. Includes ELECTRIC, BTU GAS, AVERAGE TEMPERATURE (High/Low), MONTHLY RAINFALL (inches).

SERVICE AGREEMENT: Use or consumption of services rendered by this City shall constitute an agreement by the consumer with the City to abide by the rules of the City with regard to its utility service, including, but not limited to prevailing ordinances and policies of this City and its departments. A 1.5% late fee will be charged for new charges not paid by 7 P.M. on your due date. Service disconnection may result from past due balances.

MESSAGES

The August and September fuel adjustment component of your bill will decrease from \$0.0510/kWh to \$0.039/kWh. For example, a commercial customer will see a decrease of about \$18 for every 1,500 kWh of electricity used.

Please tear off this portion and return it with your payment in the enclosed envelope.

CHANGE OF MAILING ADDRESS

Form fields for Street, City, State, Zip, Telephone, Email.

ACCOUNT# 2000-4670-6376

Please write account number on check and make check payable to: GRU Payment Amount

Or pay online at www.gru.com

Current month charges due by 7pm on 10/09/2013

TOTAL AMOUNT DUE \$ 262,721.84

000009 PL : 9 (BILLING / Seq#9)

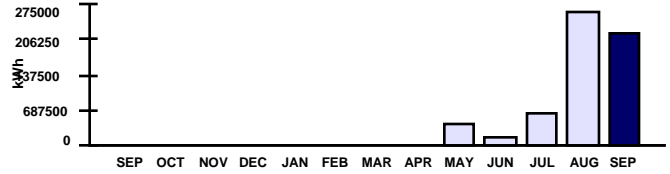
GAINESVILLE RENEWABLE ENERGY CENTER LLC
11201 NW US HIGHWAY 441
GAINESVILLE FL 32653-8001

GAINESVILLE REGIONAL UTILITIES

**Electric Service Details**

Meter Number	METER READING DATES	Meter Read Type	Days of Service	METER READINGS	Meter Multiplier	Electric Consumption	Peak Demand	Next Meter Read on or About
EGRECVM101	Previous 08/06/2013 Present 09/05/2013	ACTUAL	31	Previous 1891166 Present 4049080	1.00000	2,157.914 kWh	N/A	09/30/2013

Description	Usage	Rate	Amount Billed
ELECTRIC CUSTOMER CHARGE		\$ 300.00	\$ 300.00
ENERGY USE	2,157,914	\$ 0.0431	\$ 93,006.09
ELECTRIC FUEL ADJUSTMENT	2,157,914	\$ 0.0390	\$ 84,158.65
FLORIDA GROSS RECEIPTS TAX			\$ 4,550.37
GAINESVILLE ELEC UTIL TAX			\$ 9,785.65
-- GREC			
<b>Total for Electric Service Details</b>			<b>\$ 191,800.76</b>



**Gas Service Details**

Meter Number	METER READING DATES	Meter Read Type	Days of Service	METER READINGS	Meter Multiplier	BTU Factor	Gas Consumption	Next Meter Read on or About
G17847979	Previous 08/01/2013 Present 08/31/2013	ACTUAL	31	Previous 45775 Present 67317	1.00000	1.01500	0 BTU	09/25/2013

Description	Usage	Rate	Amount Billed
NATURAL GAS USE	0	\$ 87,320.16	\$ 87,320.16
<b>Total for Gas Service Details</b>			<b>\$ 87,320.16</b>

**Water and Wastewater Service Details**

Description	Usage	Rate	Amount Billed
WASTEWATER CUSTOMER CHARGE		\$ 7.40	\$ 7.40
WASTEWATER BILLING	41	\$ 5.8000	\$ 237.80
<b>Total for Water and Wastewater Service Details</b>			<b>\$ 245.20</b>

**Customer Inquiries**

Customer Service	(352) 334-3434	Nationwide Toll-free Number	1-800-818-3436
Emergencies or Outages	(352) 334-2871	Stormwater Service	(352) 334-5070
		Solid Waste Service	(352) 334-2330

**Payment Information**

Make checks payable to GRU; return stub and check to: P.O. Box 147051, Gainesville, FL 32614-7051. You may also pay your bill online, by phone at 1-866-269-2881 or at a convenient location in your neighborhood. Visit [www.gru.com](http://www.gru.com) for details.

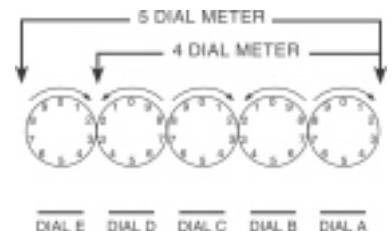
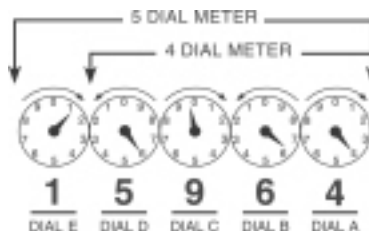
Lobby .....8 AM - 5 PM: M, T, Th, F and 9 AM - 5 PM: W

Drive-thru .....7:30 AM - 6 PM: M - F

Night depository payments will be posted the next business day if received after 3:30 PM weekdays.

**HOW TO READ YOUR METER**

Read the dials from right to left (A - E). If the dial hand is between two numbers, use the lower number.







Gainesville Regional Utilities  
301 S.E. 4 Avenue www.gru.com  
Gainesville FL 32601 352-334-3434

Account: 2000-4670-6376 Page 1 of 2  
Bill Date: 08/19/2013

100 YEARS of SERVICE | 1912-2012

GAINESVILLE RENEWABLE ENERGY CENTER PARTNER: 1000182581  
LLC 700000032266  
11201 NW US HWY 441 ROUTE: MULTIPLE  
GAINESVILLE FL 32653 NRES

Cash Security Deposit on File is \$120.00

**SUMMARY OF SERVICES**

**UTILITIES** (See reverse for details about your utility charges.)

Electric	\$	211,660.22
Gas	\$	213,470.02
Wastewater	\$	7.40
<b>Total Utility Charge</b>	\$	<b>425,137.64</b>

**TAXES AND SURCHARGES**

Florida Gross Receipts Tax	\$	5,427.18
City of Gainesville Utility Tax	\$	11,668.49
Sales Tax	\$	15,196.12
<b>Total Taxes and Surcharges</b>	\$	<b>32,291.79</b>
<b>TOTAL CURRENT MONTH CHARGES</b>	\$	<b>457,429.43</b>

**ADJUSTMENTS & SERVICE CHARGES**

MISCELLANEOUS CREDIT	\$	-214.69
SECURITY DEPOSIT INTEREST	\$	-0.04
<b>TOTAL ADJUSTMENTS &amp; SERVICE CHARGES</b>	\$	<b>-214.73</b>

**PREVIOUS BILL ACTIVITY**

Previous Balance	\$	135,297.02
Payment Amount (Date: 08/01/2013)	\$	-135,297.02
<b>BALANCE FORWARD</b>	\$	<b>0.00</b>

**ACCOUNT SUMMARY**

Current Month Charges:	\$	457,429.43
Adjustments & Service Charges	\$	-214.73
Balance Forward:	\$	0.00
<b>TOTAL AMOUNT DUE</b>	\$	<b>457,214.70</b>

**DUE BY 09/08/2013**

**AVERAGE DAILY CONSUMPTION**

Service	Meter	This Month	Last Month	Last Year
ELECTRIC	EGRECVM101	78012.85	22099.86	0.00
BTU GAS	G17847979	0.00	0.00	0.00
<b>AVERAGE TEMPERATURE (High/Low)</b>		90/73	90/72	0/0
<b>MONTHLY RAINFALL (inches)</b>		14.84	6.21	0.00

**SERVICE AGREEMENT:** Use or consumption of services rendered by this City shall constitute an agreement by the consumer with the City to abide by the rules of the City with regard to its utility service, including, but not limited to prevailing ordinances and policies of this City and its departments.  
 A 1.5% late fee will be charged for new charges not paid by 7 P.M. on your due date.  
 Service disconnection may result from past due balances.

**MESSAGES**

- THANK YOU FOR YOUR PAYMENT
- The Gainesville City Commission will consider GRU's proposed fiscal year 2013 prices during the Sept. 10 and 20 Commission meetings. The proposal includes a price decrease for natural gas service, no change for electric service, and increases for water and wastewater services. The meeting will be held at 6 PM in the City Hall Auditorium (200 E. University Avenue). Please see enclosed newsletter for details and the net effect on total bill.
- The August and September fuel adjustment component of your bill will decrease from \$0.0510/kWh to \$0.039/kWh. For example, a commercial customer will see a decrease of about \$18 for every 1,500 kWh of electricity used.

Please tear off this portion and return it with your payment in the enclosed envelope.

**CHANGE OF MAILING ADDRESS**

Street: \_\_\_\_\_  
 City: \_\_\_\_\_  
 State: \_\_\_\_\_ Zip: \_\_\_\_\_  
 Telephone: \_\_\_\_\_  
 Email: \_\_\_\_\_

000001 PL : 1 (CONTROLL / Seq#1)

  
 GAINESVILLE RENEWABLE ENERGY CENTER LLC  
 11201 NW US HIGHWAY 441  
 GAINESVILLE FL 32653-8001

ACCOUNT# 2000-4670-6376

Please write account number on check and make check payable to: **GRU** \_\_\_\_\_ Payment Amount

Or pay online at [www.gru.com](http://www.gru.com)

**Current month charges due by 7pm on 09/08/2013**

**TOTAL AMOUNT DUE**

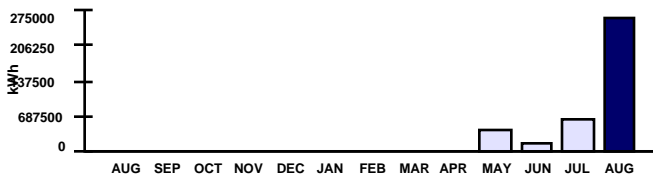
**\$ 457,214.70**

**GAINESVILLE REGIONAL UTILITIES**

**Electric Service Details**

Meter Number	METER READING DATES	Meter Read Type	Days of Service	METER READINGS	Meter Multiplier	Electric Consumption	Peak Demand	Next Meter Read on or About
EGRECVM101	Previous 07/04/2013 Present 08/05/2013	ACTUAL	33	Previous 1219931 Present 1891166	1.00000	2,574.424 kWh	N/A	08/30/2013

Description	Usage	Rate	Amount Billed
ELECTRIC CUSTOMER CHARGE		\$ 300.00	\$ 300.00
ENERGY USE	2,574,424	\$ 0.0431	\$ 110,957.68
ELECTRIC FUEL ADJUSTMENT	2,574,424	\$ 0.0390	\$ 100,402.54
FLORIDA GROSS RECEIPTS TAX			\$ 5,427.18
GAINESVILLE ELEC UTIL TAX			\$ 11,668.49
ELECTRIC STATE SALES TAX			\$ 15,196.12
-- GREC			
<b>Total for Electric Service Details</b>			<b>\$ 243,952.01</b>



**Gas Service Details**

Meter Number	METER READING DATES	Meter Read Type	Days of Service	METER READINGS	Meter Multiplier	BTU Factor	Gas Consumption	Next Meter Read on or About
G17847979	Previous 07/01/2013 Present 07/31/2013	INTERNAL	31	Previous 237 Present 45775	1.00000	1.01500	0 BTU	08/27/2013

Description	Usage	Rate	Amount Billed
NATURAL GAS USE	0	\$	\$ 213,470.02
<b>Total for Gas Service Details</b>			<b>\$ 213,470.02</b>

**Water and Wastewater Service Details**

Description	Usage	Rate	Amount Billed
WASTEWATER CUSTOMER CHARGE		\$ 7.40	\$ 7.40
WASTEWATER BILLING	0		
<b>Total for Water and Wastewater Service Details</b>			<b>\$ 7.40</b>

**Customer Inquiries**

Customer Service	(352) 334-3434	Nationwide Toll-free Number	1-800-818-3436
Emergencies or Outages	(352) 334-2871	Stormwater Service	(352) 334-5070
		Solid Waste Service	(352) 334-2330

**Payment Information**

Make checks payable to GRU; return stub and check to: P.O. Box 147051, Gainesville, FL 32614-7051. You may also pay your bill online, by phone at 1-866-269-2881 or at a convenient location in your neighborhood. Visit [www.gru.com](http://www.gru.com) for details.

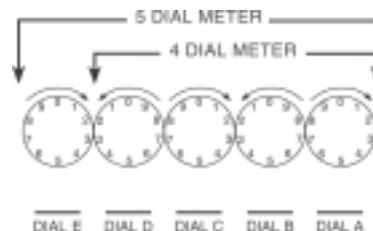
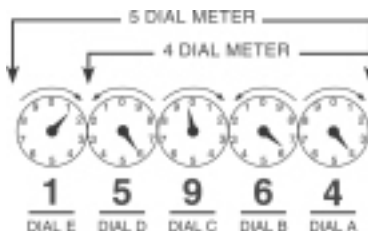
Lobby .....8 AM - 5 PM: M, T, Th, F and 9 AM - 5 PM: W

Drive-thru .....7:30 AM - 6 PM: M - F

Night depository payments will be posted the next business day if received after 3:30 PM weekdays.

**HOW TO READ YOUR METER**

Read the dials from right to left (A - E). If the dial hand is between two numbers, use the lower number.





Gainesville Regional Utilities  
301 S.E. 4 Avenue www.gru.com  
Gainesville FL 32601 352-334-3434

Account: 2000-4670-6376 Page 1 of 2  
Bill Date: 07/17/2013

100 YEARS of SERVICE | 1912-2012

GAINESVILLE RENEWABLE ENERGY CENTER PARTNER: 1000182581  
LLC 709000704541  
11201 NW US HWY 441 ROUTE: MULTIPLE  
GAINESVILLE FL 32653 NRES

Cash Security Deposit on File is \$120.00

**ACCOUNT SUMMARY**

Current Month Charges:	\$ 133,697.07
Adjustments & Service Charges	\$ 1,599.95
Balance Forward:	\$ 0.00
<b>TOTAL AMOUNT DUE</b>	<b>\$ 135,297.02</b>

**DUE BY 08/06/2013**

**SUMMARY OF SERVICES**

**UTILITIES** (See reverse for details about your utility charges.)

Electric	\$ 115,695.51
Gas	\$ 1,069.33
Wastewater	\$ 14.80
<b>Total Utility Charge</b>	<b>\$ 116,779.64</b>

**TAXES AND SURCHARGES**

Florida Gross Receipts Tax	\$ 2,966.54
City of Gainesville Utility Tax	\$ 5,644.55
Sales Tax	\$ 8,306.34
<b>Total Taxes and Surcharges</b>	<b>\$ 16,917.43</b>

**TOTAL CURRENT MONTH CHARGES \$ 133,697.07**

**ADJUSTMENTS & SERVICE CHARGES**

MISCELLANEOUS DEBIT	\$ 1,500.00
TURN ON CHARGES	\$ 100.00
TRANSFER ACCT: 2000-4659-5838	\$ -120.00
SECURITY DEPOSIT INTEREST	\$ -0.05
SECURITY DEPOSIT	\$ 120.00
<b>TOTAL ADJUSTMENTS &amp; SERVICE CHARGES</b>	<b>\$ 1,599.95</b>

**PREVIOUS BILL ACTIVITY**

Previous Balance	\$ 0.00
<b>BALANCE FORWARD</b>	<b>\$ 0.00</b>

**AVERAGE DAILY CONSUMPTION**

Service	Meter	This Month	Last Month	Last Year
ELECTRIC	EGRECVM101	22099.86	5345.03	0.00
ELECTRIC	EGRECVM101	5345.03	2308.42	0.00
ELECTRIC	EGRECVM101	2308.42	0.00	0.00
BTU GAS	G17847979	0.00	0.00	0.00
<b>AVERAGE TEMPERATURE (High/Low)</b>		90/72	86/62	0/0
<b>MONTHLY RAINFALL (inches)</b>		6.21	3.74	0.00

**SERVICE AGREEMENT:** Use or consumption of services rendered by this City shall constitute an agreement by the consumer with the City to abide by the rules of the City with regard to its utility service, including, but not limited to prevailing ordinances and policies of this City and its departments. A 1.5% late fee will be charged for new charges not paid by 7 P.M. on your due date. Service disconnection may result from past due balances.

**MESSAGES**

Install a new, efficient air conditioner for your business, and receive GRU's \$550 High-efficiency Central A/C Rebate. Some restrictions apply, so call 352-334-3434 or visit www.gru.com/YourBusiness for details.

Please tear off this portion and return it with your payment in the enclosed envelope.

**CHANGE OF MAILING ADDRESS**

Street: \_\_\_\_\_  
City: \_\_\_\_\_  
State: \_\_\_\_\_ Zip: \_\_\_\_\_  
Telephone: \_\_\_\_\_  
Email: \_\_\_\_\_

000001 PL : 1 (CONTROLL / Seq#1)

GAINESVILLE RENEWABLE ENERGY CENTER LLC  
11201 NW US HIGHWAY 441  
GAINESVILLE FL 32653-8001

ACCOUNT# 2000-4670-6376

Please write account number on check and make check payable to: **GRU**

Payment Amount

Or pay online at [www.gru.com](http://www.gru.com)

**Current month charges due by 7pm on 08/06/2013**

**TOTAL AMOUNT DUE**

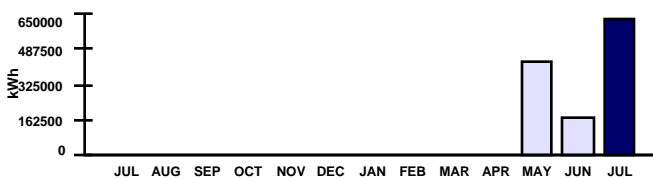
**\$ 135,297.02**

**GAINESVILLE REGIONAL UTILITIES**

**Electric Service Details**

Meter Number	METER READING DATES		Meter Read Type	Days of Service	METER READINGS		Meter Multiplier	Electric Consumption	Peak Demand	Next Meter Read on or About
	Previous	Present			Previous	Present				
EGRECV101	06/06/2013	07/03/2013	ACTUAL	28	601135	1219931	1.00000	618,796 kWh	N/A	07/31/2013
EGRECV101	05/04/2013	06/05/2013	ACTUAL	33	424749	601135	1.00000	176,386 kWh	N/A	07/31/2013
EGRECV101	11/01/2012	05/03/2013	ACTUAL	184	0	424749	1.00000	424,749 kWh	N/A	07/31/2013

Description	Usage	Rate	Amount Billed
ELECTRIC CUSTOMER CHARGE		\$ 300.00	\$ 300.00
ENERGY USE	618,796	\$ 0.0431	\$ 26,670.10
ELECTRIC FUEL ADJUSTMENT	618,796	\$ 0.0510	\$ 31,558.60
FLORIDA GROSS RECEIPTS TAX			\$ 1,500.73
GAINESVILLE ELEC UTIL TAX			\$ 2,847.08
ELECTRIC STATE SALES TAX			\$ 4,202.06
<b>EGRECV101 From 06/06/2013 To 07/03/2013</b>			<b>\$ 67,078.57</b>
ELECTRIC CUSTOMER CHARGE		\$ 300.00	\$ 300.00
ENERGY USE	176,386	\$ 0.0431	\$ 7,602.24
ELECTRIC FUEL ADJUSTMENT	176,386	\$ 0.0510	\$ 8,995.69
FLORIDA GROSS RECEIPTS TAX			\$ 433.28
GAINESVILLE ELEC UTIL TAX			\$ 833.55
ELECTRIC STATE SALES TAX			\$ 1,213.18
<b>EGRECV101 From 05/04/2013 To 06/05/2013</b>			<b>\$ 19,377.94</b>
ELECTRIC CUSTOMER CHARGE		\$ 300.00	\$ 300.00
ENERGY USE	424,749	\$ 0.0431	\$ 18,306.68
ELECTRIC FUEL ADJUSTMENT	424,749	\$ 0.0510	\$ 21,662.20
FLORIDA GROSS RECEIPTS TAX			\$ 1,032.53
GAINESVILLE ELEC UTIL TAX			\$ 1,963.92
ELECTRIC STATE SALES TAX			\$ 2,891.10
<b>EGRECV101 From 11/01/2012 To 05/03/2013</b>			<b>\$ 46,156.43</b>
-- GREC			
<b>Total for Electric Service Details</b>			<b>\$ 132,612.94</b>



**Gas Service Details**

Meter Number	METER READING DATES		Meter Read Type	Days of Service	METER READINGS		Meter Multiplier	BTU Factor	Gas Consumption	Next Meter Read on or About
	Previous	Present			Previous	Present				
G17847979	06/25/2013	06/30/2013	ACTUAL	6	0	237	1.00000	1.01500	0 BTU	07/26/2013

Description	Usage	Rate	Amount Billed
NATURAL GAS USE	0		\$ 1,069.33
<b>Total for Gas Service Details</b>			<b>\$ 1,069.33</b>

**Water and Wastewater Service Details**

Description	Usage	Rate	Amount Billed
WASTEWATER CUSTOMER CHARGE		\$ 7.40	\$ 7.40
WASTEWATER BILLING	0		
<b>WE1103931A From 06/08/2013 To 07/08/2013</b>			<b>\$ 7.40</b>
WASTEWATER CUSTOMER CHARGE		\$ 7.40	\$ 7.40
WASTEWATER BILLING	0		
<b>WE1103931A From 05/09/2013 To 06/07/2013</b>			<b>\$ 7.40</b>
<b>Total for Water and Wastewater Service Details</b>			<b>\$ 14.80</b>

**Customer Inquiries**

Customer Service	(352) 334-3434	Nationwide Toll-free Number	1-800-818-3436
Emergencies or Outages	(352) 334-2871	Stormwater Service	(352) 334-5070
		Solid Waste Service	(352) 334-2330

**Payment Information**

Make checks payable to GRU; return stub and check to: P.O. Box 147051, Gainesville, FL 32614-7051. You may also pay your bill online, by phone at 1-866-269-2881 or at a convenient location in your neighborhood. Visit [www.gru.com](http://www.gru.com) for details.

Lobby .....8 AM - 5 PM: M, T, Th, F and 9 AM - 5 PM: W

Drive-thru .....7:30 AM - 6 PM: M - F

Night depository payments will be posted the next business day if received after 3:30 PM weekdays.

**HOW TO READ YOUR METER**

Read the dials from right to left (A - E). If the dial hand is between two numbers, use the lower number.

