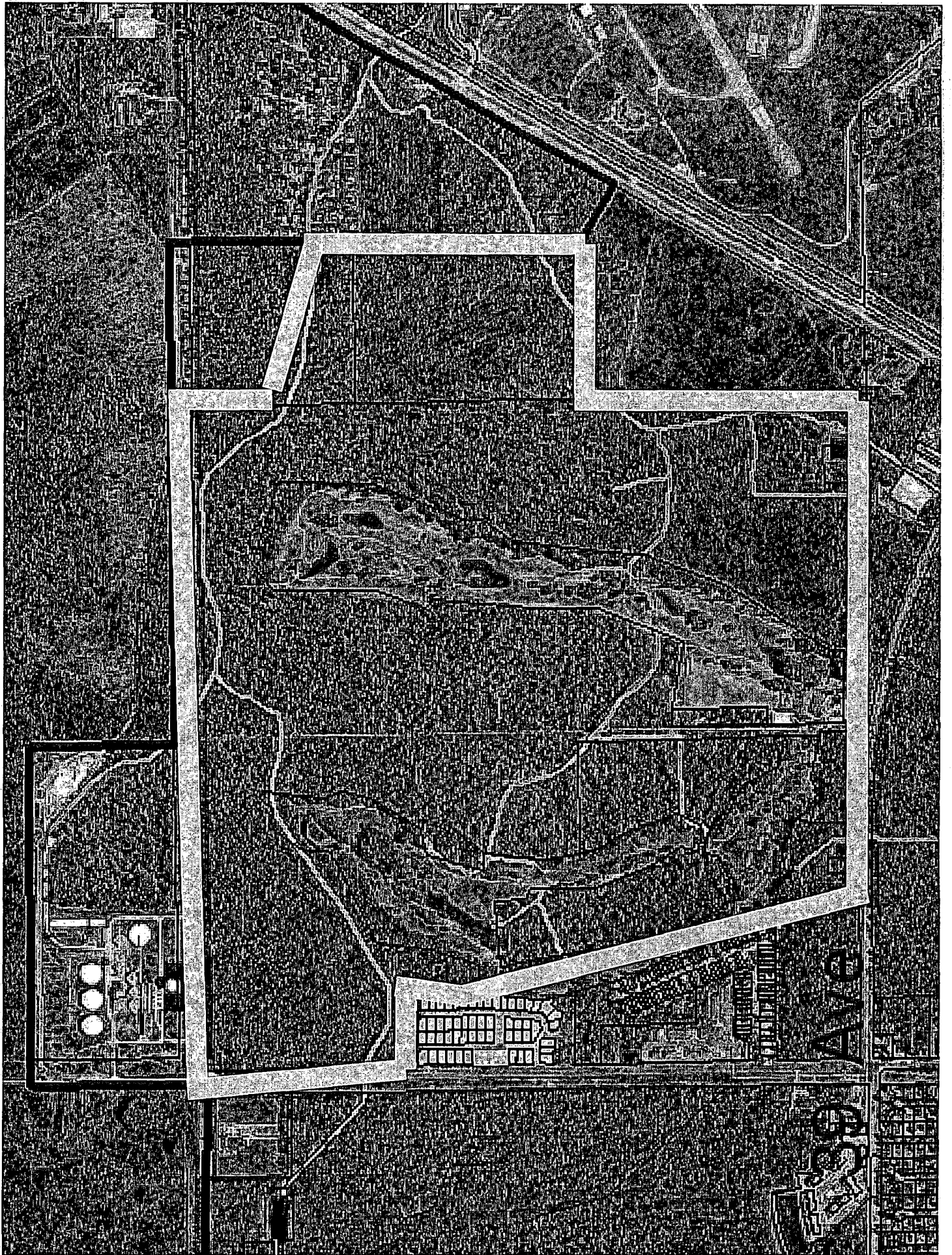


070210 B

Hatchet Creek PUD

Petition 231LUC-07/PB
SF, IND, REC to PUD

070210 B



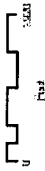
Major Issues

- Wetlands & surface waters
- Residential development
 - Amount
 - Location (Airport Noise Zone restrictions)
- Access & interconnectivity

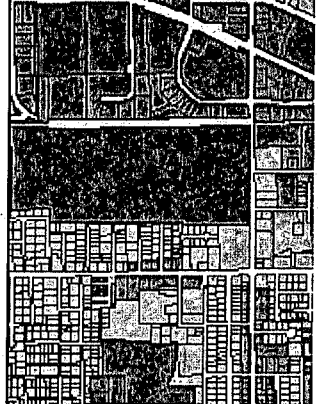
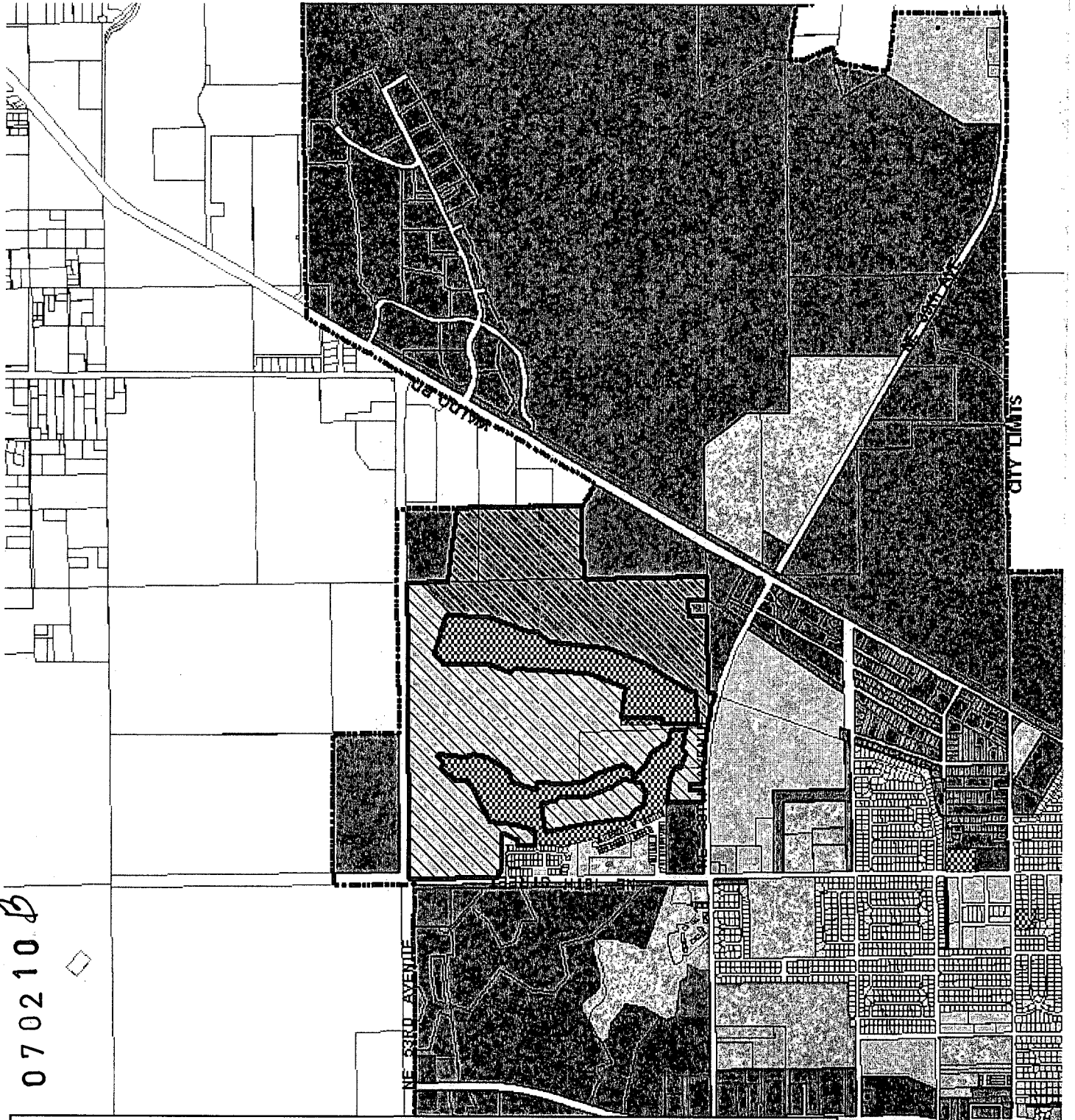
070210 B

City of Gainesville Future Land Use

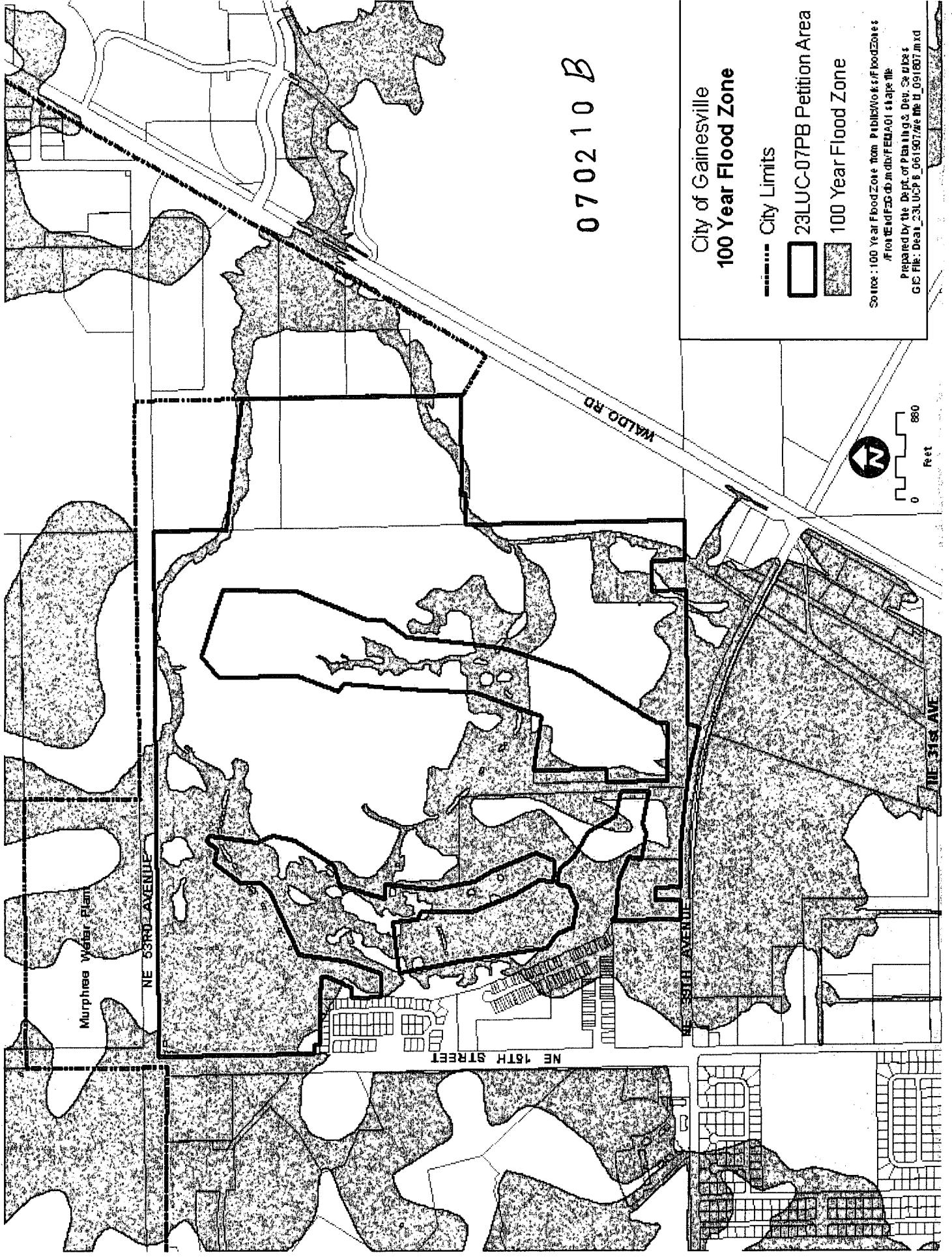
- Single Family
- Residential Low Density
- Residential Medium Density
- Residential High Density
- Mixed Use Residential
- Mixed Use Low
- Mixed Use Medium
- Mixed Use High
- Office
- Commercial
- Industrial
- Education
- Recreation
- Public Facilities
- Agriculture
- Conservation
- Planned Unit Development
- 23LUC-PB_layer



Prepared by the Dept. of Planning & Dev. CS utbx1
GIS File: Dea_23LUCPB_061507/LUP_091807.mxd



070210B



City of Gainesville
100 Year Flood Zone

- City Limits
- ▭ 23LUC-07PB Petition Area
- ▨ 100 Year Flood Zone

Source: 100 Year Flood Zone from Public Works FloodZone
 / from the FDS db in dir/FDA01 shape file
 Prepared by the Dept. of Planning & Dev. Services
 GIS File: Deal_23LUCPB_061907/ae file 11_091907.mxd



ENVIRONMENTALLY SIGNIFICANT LAND & RESOURCES

Creeks, Lakes, and Wetlands

Legend

- Regulated Creeks
- Wetlands
- Lakes
- Gainesville City Limits



23LUC-07PB Petition Area

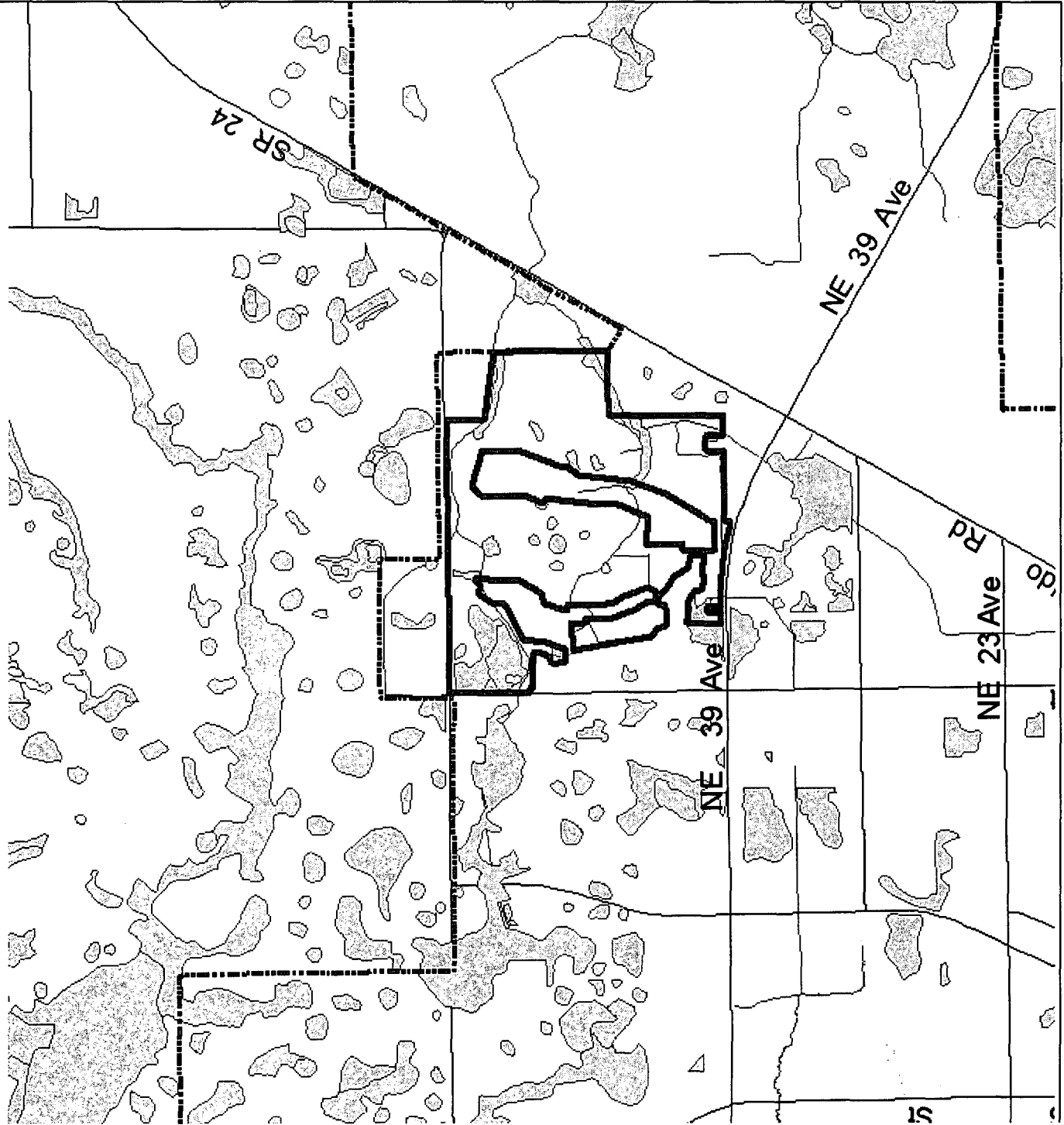
0702101 B

Source: Wetlands & Lakes: SURFWD digital files (11/85 & 1p, wetlands-6000-6669, lake-6200)
Creeks: Regulated Creeks, Environmental
Covey District, Land Development Code

City of Gainesville
Gainesville, Florida

Prepared by the
Dept of Planning & Dev. Serv./GIS
September 2007

0.2 0.1 0 0.2 Miles








88.66 total acres SF
 34.43 acres SF affected
 84.23 acres SF unaffected

198.72 total acres IND
 154.60 acres IND affected
 44.12 acres IND unaffected

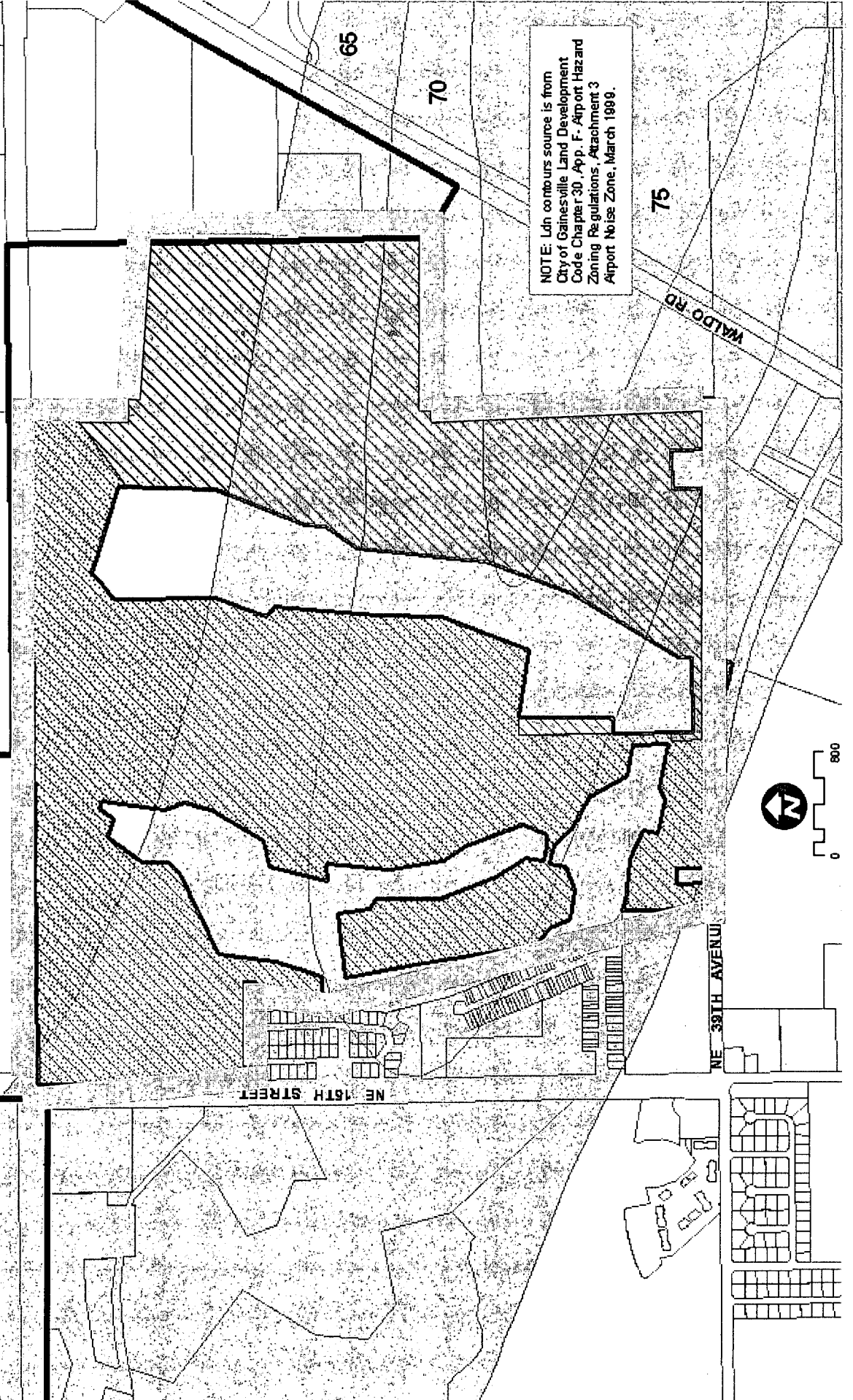
Murphree Water Plant

070210B

LUP Category

	Petition Area a		IND
	489.55 acres		198.72 acres
	LDN'S		SF
			288.66 acres
	City Limits		

Prepared by the Dept. of Comm. Dev.
 GIS File: 23LUC-07P 8_LDN155_82M_071307.mxd



NOTE: Ldn contours source is from
 City of Gainesville Land Development
 Code Chapter 30, App. F, Airport Hazard
 Zoning Regulations, Attachment 3
 Airport Noise Zone, March 1999.