

[Products >](#)
[Requests >](#)
[Support >](#)
[News >](#)
[About Us >](#)

Polygraph

- ▶ [Polygraph Software](#)
- ▶ [Conventional Polygraphs](#)
- ▶ [Polygraph Accessories](#)
- ▶ [New Polygraph Products](#)
- ▶ [Our Polygraph Dealers](#)
- ▶ [Polygraph LX Software and Hardware](#)
- ▶ [Advanced User's Guide](#)
- ▶ [LX3000 to 4000 Upgrade Instructions](#)
- ▶ [Frequently Asked Questions](#)
- ▶ [Polygraph Links](#)

[Sales and Service](#)
[Pricing](#)
[International](#)
[Dealer](#)
[Opportunities](#)
[Monthly Specials](#)
[New Products](#)
[Our Management](#)
[Career](#)
[Opportunities](#)
[Company History](#)
[Product Training](#)
[Downloads](#)
[Site Map](#)

Polygraph -> Computerized Polygraph Systems:

LX4000 (Computerized Polygraph Systems):

- [LX 4000 Computerized System](#)
- [Polygraph Software](#)
- [Scoring Algorithms](#)
- [Polygraph Accessories](#)
- [Software Updates](#)
- [Activity Sensor](#)



lx4000

LX4000 - Platinum Series

The Ultimate in Performance

The **LX4000** Computer Polygraph System can be purchased as a complete system with a laptop or desktop computer, or as a stand-alone Data Acquisition System (DAS) that can be readily connected to your existing computer (compatible with most brands) and printer. When using your own computer with the **LX4000** please note the following Minimum Computer System Requirements:



Minimum Computer System Requirements:

- 1.0GHz Pentium III or higher
- 256MB RAM
- 40GB Hard Drive

- Windows® 98/ME/2000/XP operating system (Windows® 2000/XP recommended)
- Super VGA (800 x 600)
- CD-ROM required and/or DVD-RW recommended for new systems
- Keyboard and Microsoft® Mouse or compatible pointing device
- Available USB Port
- Digital sound card required for multimedia capabilities
- Digital video camera required for video capture. Logitech web camera (QuickCam or QuickCam Pro for Notebooks) recommended
- External Microphone may be required for recording audio, depending upon host computer's configuration (e.g. no built-in microphone), examine/examinee location, ambient noise, etc.

* Additional resources may be required for certain video devices. Always consult the documentation for any selected video device to ensure the host computer meets the stated system requirements.

System Description:

The LX4000 computer polygraph system records, stores and analyzes physiological changes during a polygraph examination. The LX4000 system combines conventional polygraph procedure with a sophisticated state of the art computer. Results are derived from the following traditional physiological parameters:

- Pneumo** - Two Respiration Input Channels
- EDA** - Galvanic Skin Response
- Cardio** - Blood Volume/Pulse Rate

We currently offer a Plethysmograph (PLE) Model 76599LX to measure finger pulse and blood volume, Activity Sensor Model 76878US to measure any movement by the subject to help identify countermeasures, a Countermeasure Detection System Model 76876US to detect mental or physical countermeasures used by a subject during examination. A total of seven channels can be recorded at one time.

Charts are recorded in much the same manner as conventional polygraph instrumentation with a smooth scrolling display moving from right to left. The tracings recorded are in real-time and are truly rectilinear, so charts can be easily interpreted. See polygraph software page for a sample of the tracings. The system can be operated using a mouse/pointing device or the keyboard.

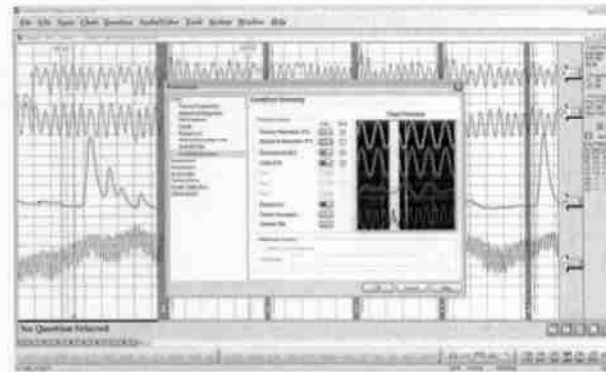
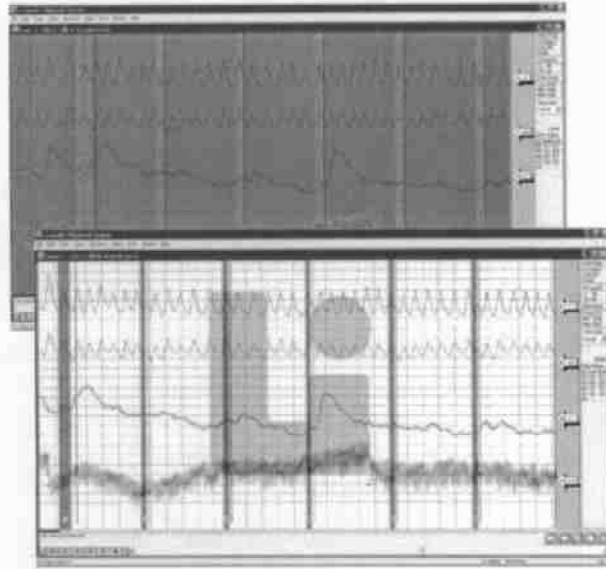
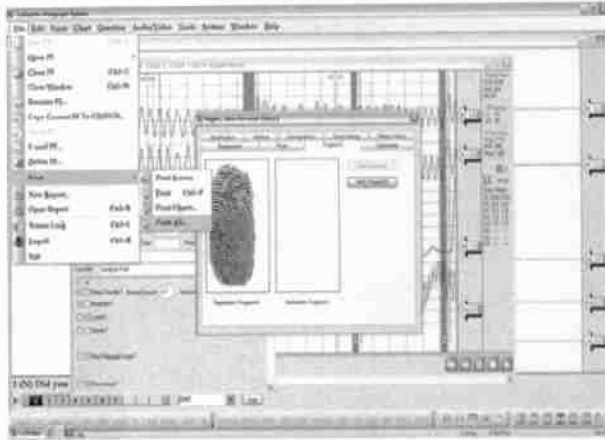
Hardware Innovations:

- Our new **USB Interface** enables the LX4000 to communicate with virtually any Windows® based PC computer. This design does not require batteries or external power.
- The LX4000 is capable of simultaneously displaying and recording seven input signals.
- The LX4000 is **Small and Compact**, making transporting it even easier.
- The Redesigned EDA Circuit has a greater operating range, increased sensitivity and subject isolation.

LX 9.9.2 Software Innovations:

- ASIT Computerized Scoring Algorithm Support
- Enhanced Chart Review Caliper Operation
- Redesigned Question Editor
- Enhanced Question Set Management

- Advanced Audio Recording Capability
- Redesigned Toolbar and Main Menu
- Configurable Question Text Font
- PF Open from Windows Explorer
- Enhanced Window Management
- Chart Review Zoom Calibration



System Accessories:

The LX4000-SW System Comes With the Following Accessories:

- LX4000 Data Acquisition System Interface (DAS)
- LXSOFTWARE LX Polygraph Software Including, the Objective Scoring System (OSS) and the Lafayette Drug Reference
- APL's POLYSCORE™ Scoring Algorithm
- Comprehensive Instruction Manual on CD-Rom
- 76513-1G Pneumo Chest Assembly, Gold
- 76513-2B Pneumo Chest Assembly, Bronze
- 76640SO GSR Finger Electrode Assembly
- 76530 Standard Blood Pressure Cuff
- 76506LX Pump Bulb and Gauge Assembly
- All Necessary Cabling
- 1 Year Warranty on Accessories



LX4000 DAS Specifications:

- **Size:** 10.25"W x 3.25"D x 1.25"H (26.04cm x 8.26cm x 3.18cm)

- **Weight:** 1 pound (454g)
- **Communication Interface:** USB
- **Power Supply Requirements:** Receives All Required Power Through USB Connection
- **Sensor Inputs:**
 - (2) Pneumograph Chest Assembly, +/-80mmHG
 - (1) Cardio Arm Cuff, 0 to 110mmHG
 - (1) EDA, Current Applied to Skin 10 μ A, 0 to 4VDC
Range 10Kohms to 2.0Mohms
Isolation 1500V RMS
 - (3) Auxiliary Input, 0 to 4V Analog Input
- **Temperature: Operating:** 50oF to 95oF (10oC to 35oC)
Storage: -40oF to 115oF (-40oC to 46.1oC)
- **Relative Humidity:** 20% to 95% Non-condensating
- **3 Year Warranty on the DAS Unit**

LX4000 Special Offers

- Trade-In an Axciton, Limestone or Stoelting Computerized Instrument and receive a \$1500.00 discount off the list price of an LX4000

or

- UPGRADE From A Lafayette Instrument LX2000 OR LX3000 FOR ONLY \$2,730

Video Recording with the Logitech QuickCam Pro Model LX-WEBCAM

LX Operating Software allows a polygraph examiner to record (with sound) a polygraph session on a computer screen using an inexpensive digital camera (QuickCam Pro 4000 Logitech). Video recording is synchronized with a polygraph chart and the recording can be played back. The video-recording feature is helpful in polygraph analysis and protects the polygraph examiner from possible false accusations by clients.

Polygraph sessions can be recorded on CDs and/or DVDs after a test depending upon the computer's capabilities. CD-ROM required and CD-RW or DVD-RW recommended for new systems. Record the entire test from the subject's arrival to departure, or just use as a monitor during testing.

- Enjoy 640x480 video resolution with the advanced VGA CCD sensor
- high-quality 1.3 megapixel photo resolution
- Zoom in or out, even pan and tilt to get the right shot
- Send live video to mobile phones
- Create movies like a pro with studio-quality video editing software
- Compatible with USB 2.0 and 1.1



LX4000-505 & LX4000-605 Computerized Polygraph Systems



Computer hardware and software may change without notice depending on availability.

Please call for the latest configurations and specifications.

Whether you are a seasoned computer user or a beginner, our Windows® integrated system software makes our computerized system completely "user friendly". Both the **LX4000-505** Laptop system and the **LX4000-605** Desktop system will provide you with a dependable, technologically advanced and easy to use instrument.

Each Laptop/Desktop system comes complete with:

- Laptop/Desktop (Call for spec sheets) DAS Interface
- LX Software
- Printer (Portable or Desktop)
- Recording attachments
- All necessary cabling
- Extensive User's Manual on CD-ROM
- Our DAS has a 3 year limited warranty on all parts and labor

Some of the benefits of the LX4000 computerized polygraph systems include:

- Fully integrated POLYSCORE® and OSS scoring algorithms
- Integrated security password and system lockout
- High resolution, real-time graphic display of physiological wave forms
- Windows® integrated software allows point and click navigation
- Fully integrated word processing template for report capabilities
- Extensive built-in help program with tutorial and trouble shooting sections
- View, score and print charts without the DAS interface attached
- Capable of real-time printing
- Numeric chart evaluation templates
- Lafayette Drug Reference written by Dr. Catherine B. Wilmore, Ph.D., Department of Pharmaceutical Sciences, University of Maryland at Baltimore.

Note: Intel 82371SB (Hardware version 000 and 001)

The "SB" chipset has a lot of known defects that are referred to as "errata". Errata is defined as defects in a product that can result in the specified product not performing to the manufactures specifications. Intel fixed many of the defects, but then decided not to fix all of them. Instead they moved on to the "AB" chipset. You will generally find "SB" chipsets on machines that are older than 12 months; this includes many Compaq's. Compaq was one of the three companies that started the implementation of USB, Intel and Microsoft completes the trio.

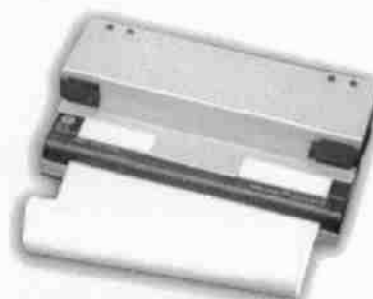
Each Laptop/Desktop system comes complete with either a portable or desktop printer:

Pentax PocketJet II Model LX-1575 Portable Thermal Printer

This small, portable printer uses roll thermal paper, **Model LX-1575TCP**, to print laser-quality reports and continuous real-time charts. The optional paper stand, **Model LX-1575STD**, is recommended. The PocketJet II weighs just over a pound and is **2.17"W x 10.4"L x 1.18"H**.



Paper Stand for Pentax Thermal Printer Model LX-1575STD



Model LX-1575STD

Desktop Printer Model LX-1580

This HP® printer uses sheet or banner paper to print color reports and continuous real-time charts.

- Now with larger margins!



Go to:

[Software](#)
[Scoring Algorithms](#)
[Activity Sensor](#)

For more info, contact:

Kari Bumbleburg, ext. 211 (US & Canada)
Email: KBumbleburg@lafayetteinstrument.com

Yazmin Bronkema, ext. 203 (Outside the US)
Email: ybronkema@lafayetteinstrument.com



Polygraph Training



*****Additional Training Date***
June 20 - August 12, 2005**

Thank you for your request for information on Deception Control's INTERNATIONAL ACADEMY of POLYGRAPH.

Social and financial pressures of our times are creating more demands for lie detection/truth verification. Law enforcement and governmental agencies are increasing their use of lie detection daily and there is now an extreme need for professional Polygraph Examiners.

The training program offered by the INTERNATIONAL ACADEMY of POLYGRAPH provides the most complete presentation of current Polygraph techniques to prepare individuals for this challenging career opportunity. Instruction is presented by highly competent professionals in the fields of Polygraph Methodology, Law, Psychology and Physiology to insure that upon completion of the course, the student is able to pass any professional or regulating agency requirements for membership or licensing.

The attached curriculum outline, entrance requirements and related information will familiarize you with the Academy's study program and standards.

If you meet the enrollment requirements, please complete and return the enclosed application. Should you have additional questions, we will be happy to assist you in every way possible.

Very truly yours,

Marietta L. Michaels
Administrator

MLM:ajc
encs.

For more information on Polygraph School or services please contact lou@deception.com

MISSION STATEMENT

In 1980, *the International Academy of Polygraph* adopted a standard of excellence in Forensic Psychophysiology training that has endured through the years. Its hallmark has been its uncompromising determination to:

- A. Provide the most complete presentation of current Polygraph techniques
- B. Maintain high standards of training and ethical business conduct
- C. Utilize highly competent professionals in the fields of Psychology, Physiology, Law and Polygraph

Methodology

- D. Insure that upon course completion, the student is able to pass any professional or regulating agency requirement for certification or licensing
- E. Fortify instrumentational skills and individual scholastic achievement

The Academy and its training faculty subscribe to the highest caliber of professionalism and proficiency, and dedicated to this mission, the Academy in turn infuses its graduates with this philosophy.

INTERNATIONAL ACADEMY of POLYGRAPH is pleased to announce the approval of its Professional Polygraph Examiner (Forensic Psychophysiological) training course for earned college credits.

In cooperation with *BROWARD COMMUNITY COLLEGE, Criminal Justice Institute*, any graduate completing the International Academy of Polygraph training program will be eligible for (19) credit hours to be applied toward further educational goals, including the attainment of an Associate degree.

In addition, *INTERNATIONAL ACADEMY of POLYGRAPH's* curriculum and training format is presently being considered by a Miami post graduate learning institution for adoption into its scholastic roster and for approval of earned credit hours toward a four year college degree.

REFRESHER & ADVANCED TRAINING COURSES

The Academy offers advanced training in the fields of:

- Interviewing & Interrogation
- Chart Analysis & Countermeasures
- Numerical Scoring of Charts
- Post Conviction Sex Offender Testing

These courses are open only to those individuals who have already completed Polygraph training.

For scheduling dates, please contact the Administrator's Office

***DECEPTION CONTROL
INTERNATIONAL ACADEMY OF POLYGRAPH***

<i>ENTRANCE REQUIREMENTS</i>	
A. STANDARDS:	Both study facilities and course curriculum have been approved by the American Polygraph Association, and accredited by the State of Florida. Ultra modern facilities are equipped with video monitoring/taping capabilities for effective teaching and student study aids.
B. ENTRANCE REQUIREMENTS:	Each applicant must be of verified good reputation and meet one of the following: 1. Sworn member, either active or former, of a federal, state or local law enforcement agency

	2. Completion of 60 semester hours of college (certified copy of transcript is required)
C. COURSE DURATION:	Ten week program: (8) week on-campus training and off-campus practicum of thirty (30) polygraph charts
D. FEE:	Course fee is \$5000.00 which covers all teaching manuals, instruction and lab supplies. Tuition must be paid in full by the first day of class, unless otherwise approved by the Administrator's Office. A \$750.00 non-refundable registration fee is required with each completed application. This fee will be applied to the tuition upon applicant's acceptance and entrance into the Academy. Tuition for this course qualifies for 2nd Dollar Funding in the State of Florida.
E. COMPLETION:	A Certificate of Completion will be presented to each graduate upon successful completion of the course. In addition, each graduate will be extended an opportunity to qualify for the American Polygraph Association membership.

CLASS HOUR ASSIGNMENTS

<i>BLOCK #</i>	<i>SUBJECT MATTER</i>	<i>IAP HOURS REQUIRED</i>
1.	History & Development	8
2.	Mechanics of Instrument Operation	30
3.	Maintenance & Calibration	16
4.	Physiology	32
5.	Psychology	32
6.	Polygraph Techniques	80
7.	Test Question Formulation	40
8.	Interviewing & Interrogation Procedures	32
9.	Research - Validity/Reliability	8
10.	Chart Analysis	48
11.	Polygraph Skills	60
12.	Ethical & Legal Aspects	14
	TOTAL in-class HOURS.....	320
	<i>Additional 30 polygraph charts (off-campus), submitted to the Academy for evaluation, will be required to fulfill total scholastic hours</i>	
	TOTAL Accredited scholastic hours	400

- LEGEND:
- Block # designation is same as Chapter designation
 - Subject matter is same as general topics of instruction
 - APA: American Polygraph Association
 - IAP: International Academy of Polygraph requirements for minimum hours of instruction in this course

INTERNATIONAL ACADEMY of POLYGRAPH is:

- Accredited by the American Polygraph Association
- Accredited by the Florida Polygraph Association
- Approved by the American Association of Police Polygraphers
- Approved by the Texas Association of Polygraph Examiners
- Special funding is available through Florida's Criminal Justice Standards & Training

INFORMATION BULLETIN for PROSPECTIVE STUDENTS
School Calendar - Class Dates

2005 - 2006 In Class STUDY SCHEDULE

2005

FEBRUARY 7th - APRIL 1st

JUNE 20th - AUGUST 12th

SEPTEMBER 12th - NOVEMBER 4th

2006

FEBRUARY 13th - APRIL 7th

SEPTEMBER 11th - NOVEMBER 3rd

DISMISSAL/SUSPENSION and RE-ADMISSION POLICY

Attendance policy: The student must be physically present at the school facility for not less than 90% of actual classroom instruction time. Remediation is required for missed hours.

Excusal from class: A student may be excused from class for reasons of illness, family emergency or court testimony. Excusal must be approved in advance by the Director who will schedule when remedial action for the training deficit will be scheduled.

Dismissal: A student will be dismissed from the course due to scholastic failure or consistent absence.

Suspension: The Academy has no provision for suspension.

Re-admission: The student will be required to prepare a letter to the Director explaining his/her reason for seeking re-admission, and indicating the corrective action taken in order to re-qualify for admission.

REFUND POLICY

If a student fails to complete the course, tuition (excluding the non-refundable registration fee) will be refunded as follows:

Withdrawal during the first week of class	90%
Withdrawal during the second week of class	55%
Withdrawal during the third week of class	30%
Withdrawal after the third week of class	0%

GRADUATION POLICY

The **INTERNATIONAL ACADEMY of POLYGRAPH EXAMINERS** prides in aligning itself with a superlative caliber of instructional staff and faculty, as well as a comprehensive curriculum which is its teaching foundation. This winning training philosophy has been most evident through the years in the consistently high test scoring of the Academy's students while in training, and in the superior performance they demonstrate as they administer examinations in the public and private sectors, following graduation.

To achieve these goals, the **INTERNATIONAL ACADEMY of POLYGRAPH EXAMINERS**'s criteria for evaluating graduation status is as follows:

Each student must pass examinations in History, Psychology, Physiology, and Instrumentation with a minimum grade of 70%. Additionally, the Final Examination Parts #1 and #2 must also be passed with a minimum grade of 70%.

The Cumulative totals of all examinations taken during Training must not average less than 70%.

Each student must also have been present in class Attendance for a minimum of 90% of class hours (7 weeks total) and have completed a minimum of 60 minutes in short time.

LODGING ARRANGEMENTS

Special law enforcement rates and accommodations have been secured for those students requiring housing while attending the Academy. Although this information is being made available through the Academy, it is the individual student's responsibility to secure the necessary arrangements directly with the selected hotel. To assure that the Academy's rate will be extended to you, be sure to mention "DECEPTION CONTROL" when speaking with the hotel's contact person.

Hotel	February 2005	September 2005
WELLESLEY INN & suites 1401 SW 15th Street Pompano, FL Contact: (954) 783-1050 Fred Bevins	\$ 64.99/night	\$ 50.99/night
***Inc.continental breakfast, microwave,		

stove, refrig. queen bed, couch, light workout facilities***		

Provides daily maid service, pool and on-premises laundry. Hotel is located within ten (10) minutes of the Academy with restaurants and personal shopping areas within easy access. Rates are based on a 8 week inclusive stay and are subject to state and county taxes (11% total) - will be waived if proper Florida tax exemption information is provided to the hotel.

Please contact us for further information.

The Academy and its training faculty subscribe to the highest caliber of professionalism and proficiency, and dedicated to this mission, the Academy in turn infuses its graduates with this philosophy.

● To download an application [CLICK HERE](#)

- *Serving the Nation*
- 1835 South Perimeter Road
 - Suite 125
 - Fort Lauderdale, FL 33309
- Phone: (954) 771-6900 ♦ Fax: (954) 776-7687
- E-mail: iap@deception.com
- On the Web at: <http://www.deception.com>