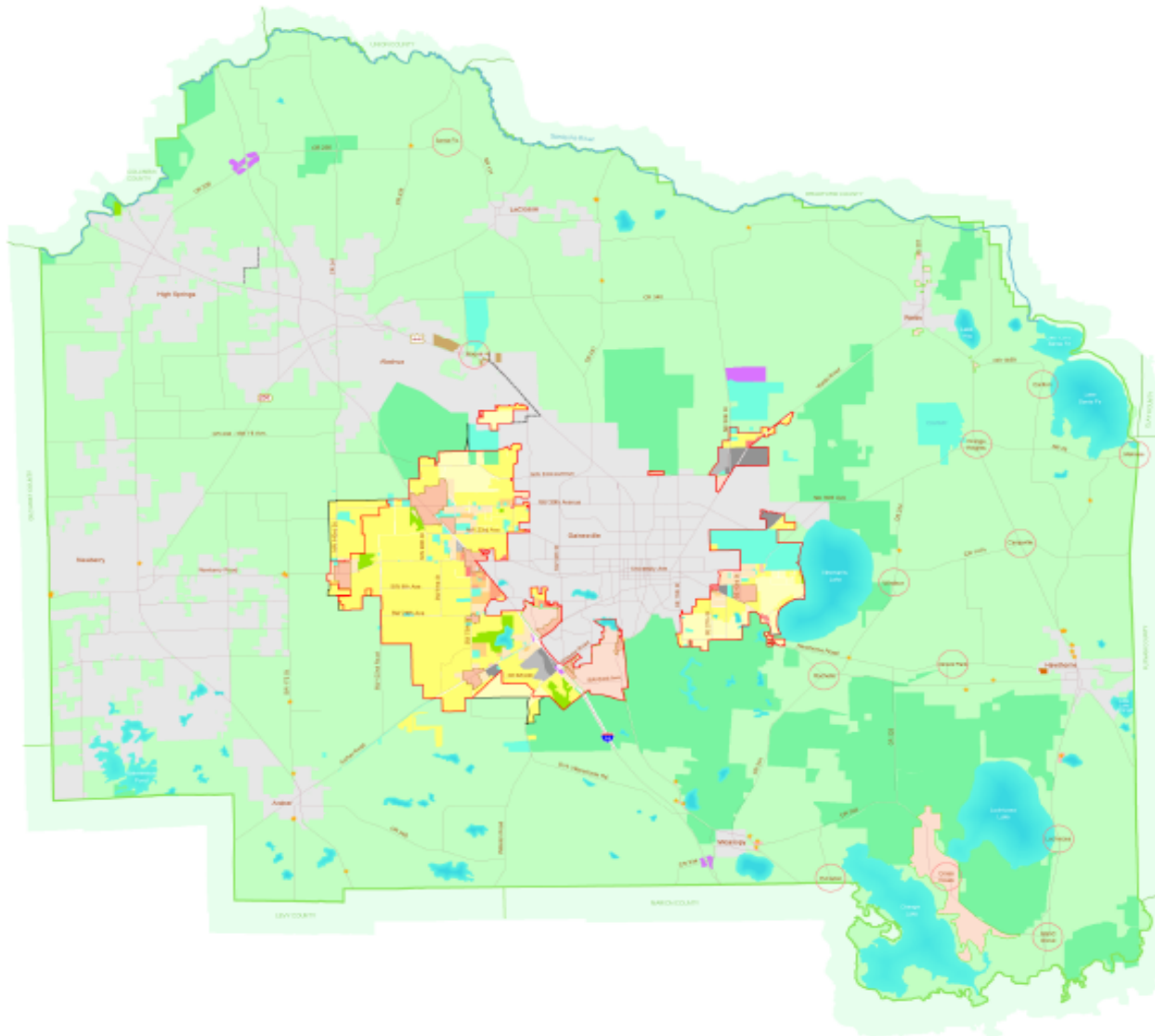


**MULTI-MODAL
TRANSPORTATION
&
LAND USE**

**AN ALTERNATIVE TO
CONVENTIONAL
TRANSPORTATION
CONCURRENCY**

FUTURE LAND USE MAP 2020 - ALACHUA COUNTY, FLORIDA



LEGEND

- Commercial Enclaves
- Rural Commercial - Agriculture
- Rural Cluster
- Urban Services Line
- Urban Cluster Line
- ~ Municipality Separator
- Water Bodies
- Municipalities
- Special Area Studies
- Activity Centers
- Recreation
- Preservation
- Commercial
- Tourist/Entertainment
- Institutional
- County Solid Waste Management Facility
- Light Industrial
- Heavy Industrial
- Estate Residential
- Low Density Residential
- Medium Density Residential
- High Density Residential
- Rural/Agriculture
- Rural Employment Center
- Rural Community Employment Center

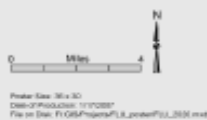
Future Land Use Distribution in Unincorporated Area by Acreage and Percentage

LAND USE TYPE	ACREAGE	PERCENTAGE
Commercial	2,199 acres	9.9%
Industrial	2,539 acres	9.9%
Institutional	6,582 acres	1.7%
Recreation/Open Space	1,633 acres	9.4%
Utility	4 acres	0.0%
Residential Total	32,282 acres	6.0%
Residential, Estate (1/2 - 2 acres)	6,582 acres	1.1%
Residential, High (1/4 - 1/2 acre - 201 acres)	1,200 acres	0.3%
Residential, Medium (1/2 - 1/4 acre - 211 acres)	2,199 acres	0.4%
Residential, Medium-High (1/2 - 1/4 acre - 141 acres)	266 acres	0.2%
Residential, Low/Medium (1/2 - 1/4 acre - 172 acres)	372 acres	0.1%
Residential, Low (1/2 - 1/4 acre - 101 acres)	201 acres	0.1%
Residential, Very Low (1/2 - 1/4 acre - 101 acres)	201 acres	0.1%
Preservation	69,734 acres	14.2%
Preservation/Scrubland	371,283 acres	76.0%

1% Based on 2010 Census

Notes:

The Future Land Use categories shown on this map are defined in the Alachua County Comprehensive Plan and are to be implemented in conjunction with the Goals, Objectives and Policies. This map is part of the Future Land Use Map.



Prepared by:
Alachua County Government
Department of Growth Management
10 SW 2nd Avenue
Gainesville, FL 32601
(352) 374-5240
<http://growth-management.alachua.fl.us/>

Data Sources

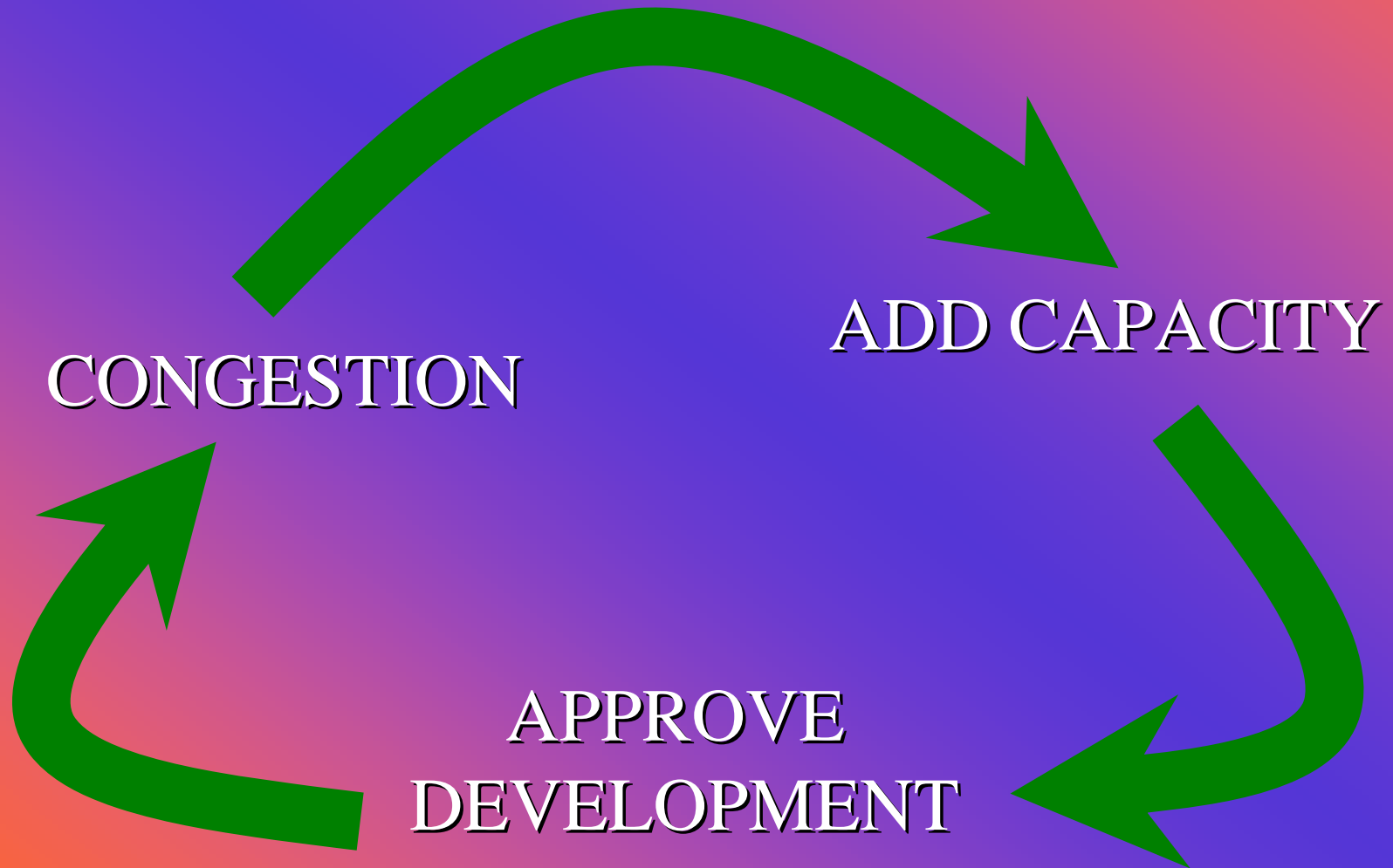
Activity Centers
Commercial Enclaves
Future Land Use
Municipalities
Municipality Separator
Preservation
Rural Clusters
Rural Employment Center
Special Area Studies
Urban Cluster Line
Urban Services Line
Urban Services Line
Preservation
Documentation:
<http://growth-management.alachua.fl.us/growth-land-use>

Amended:

04-03-08 (3/26/08), Ord 04-08 (8/9/04), Ord 04-11 (1/13/04),
Ord 04-17, 16, 19, 20 (9/24/04), Ord 04-24 (10/20/04),
Ord 04-26 (2/8/05), Ord 04-30 (2/3/05),
Ord 04-35, 36, 37 (10/3/05), Ord 04-38, 39 (1/11/06),
Ord 04-39, 40, 41, 42, 43, 44, 45, 46, 47 (12/12/06)

Effective Date: 2008

EXISTING CONCURRENCY SYSTEM



AVAILABLE OPTIONS

ROADWAYS ONLY

VS

MULTIMODAL
APPROACH

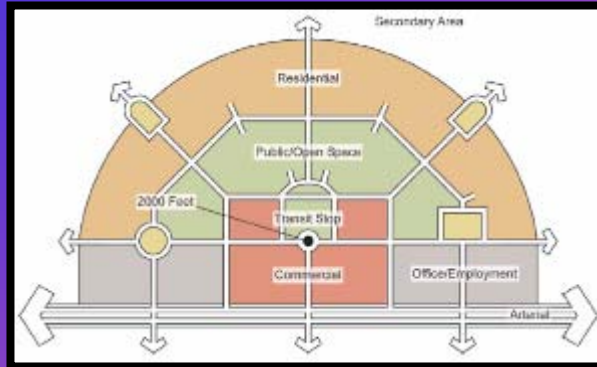


MTPO 2025 LONG RANGE TRANSPORTATION PLAN VISION STATEMENT

- Land use developed with intensity and density that creates more balance in east-west Gainesville area growth, connects a limited number of highly developed mixed use centers, and is served by a highly-efficient multimodal transportation system, which allows for mode choice.
- The transportation system is safely used by people of all ages and income classes, supported by a dedicated transportation funding source and provides for:
 - walkable University and town centers;
 - improved and affordable transit service;
 - improved bikeway/trail system; and
 - better road connectivity.

The proposed Alternative Concurrency Management System will be consistent with all of these principles

ALTERNATIVE APPROACH



MOBILITY FEE

EXISTING IMPACT FEE SERVES AS BASE

MULTI-MODAL INFRASTRUCTURE

FEE REDUCTION: TOD = 40% TND = 20%

TOD FUNDS TRANSIT SERVICE

RURAL FEE > URBAN FEE

PROJECT \$60 MILLION IN IMPACT FEES

PUBLIC / PRIVATE PARTNERSHIP



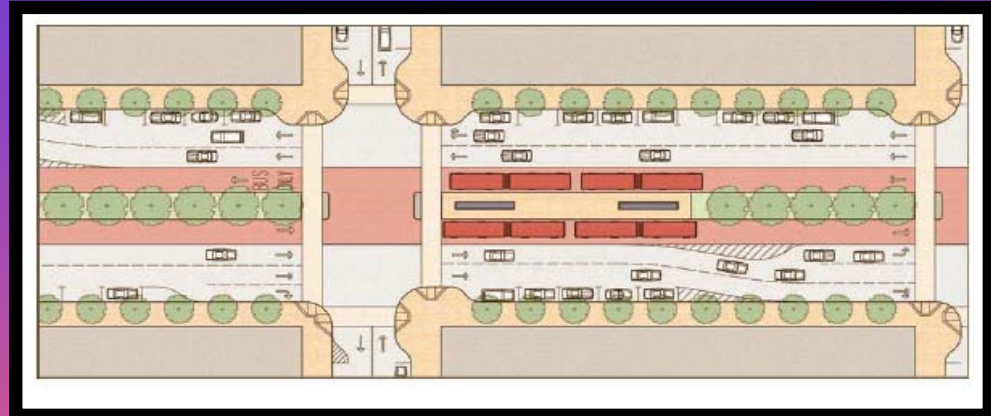
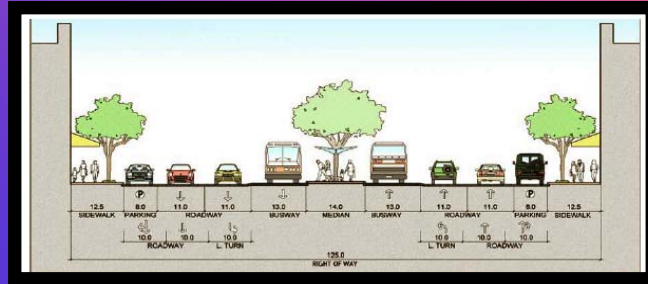
**PROACTIVE
VS
REACTIVE**



RAPID TRANSIT



DEDICATED LANES



TRANSIT STATIONS




TRANSIT VEHICLE

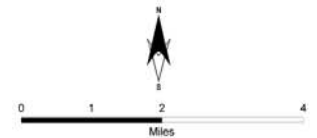


COUNTYWIDE RAPID TRANSIT VISION

Conceptual Long Term Rapid Transit Vision -Draft-

Legend

 Conceptual Long Term Rapid Transit Vision



Notes:

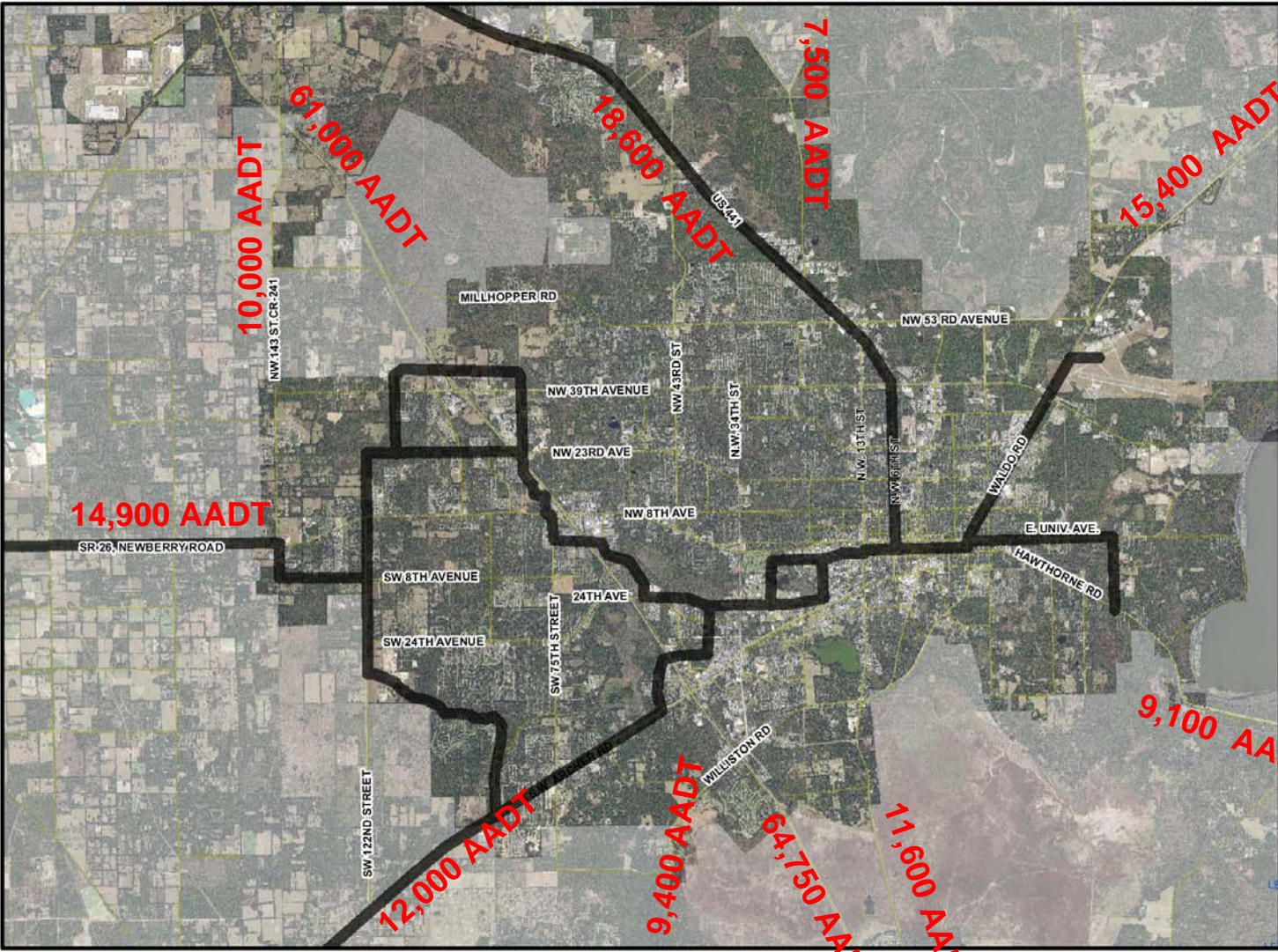
This map has not been adopted or approved by the Board of County Commissioners. It is a working draft only.

Production Date: 8/25/08

Prepared by:

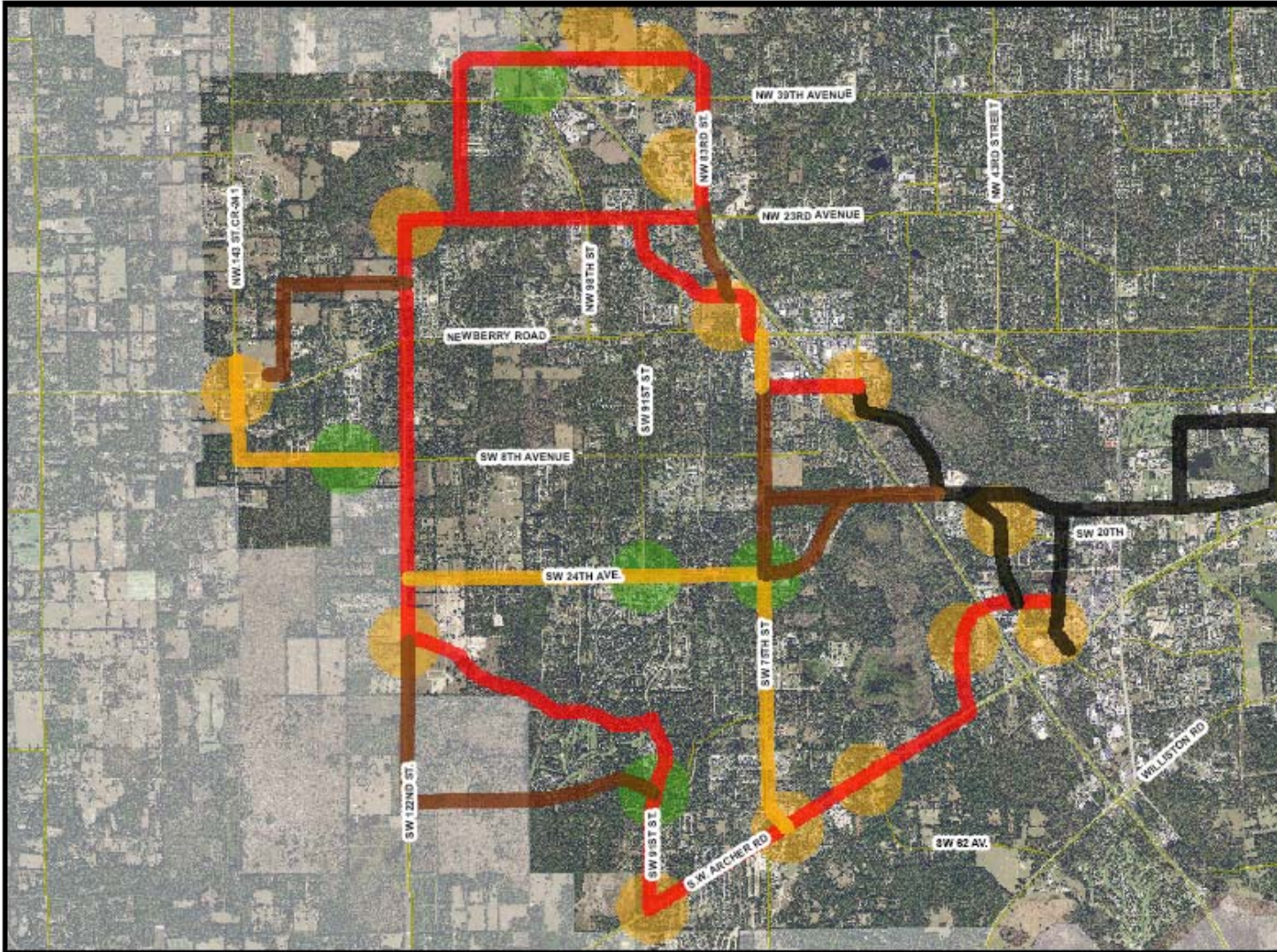
Board of County Commissioners
Department of Growth Management
10 SW 2nd Avenue
Gainesville, FL 32601
(352) 374-5249

<http://growth-management.alachua.fl.us/>



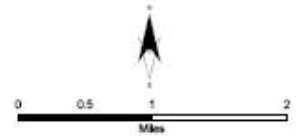
TRANSIT VISION

Long Term Transit Corridors Vision



Legend

-  TOD Station
-  TOD Stop
-  Dedicated Lanes
-  Alternate Route
-  Rapid Transit Service
-  Conceptual Transit



Notes:

This map has not been adopted or approved by the Board of County Commissioners. It is a working draft only.

Production Date: 9/03/08

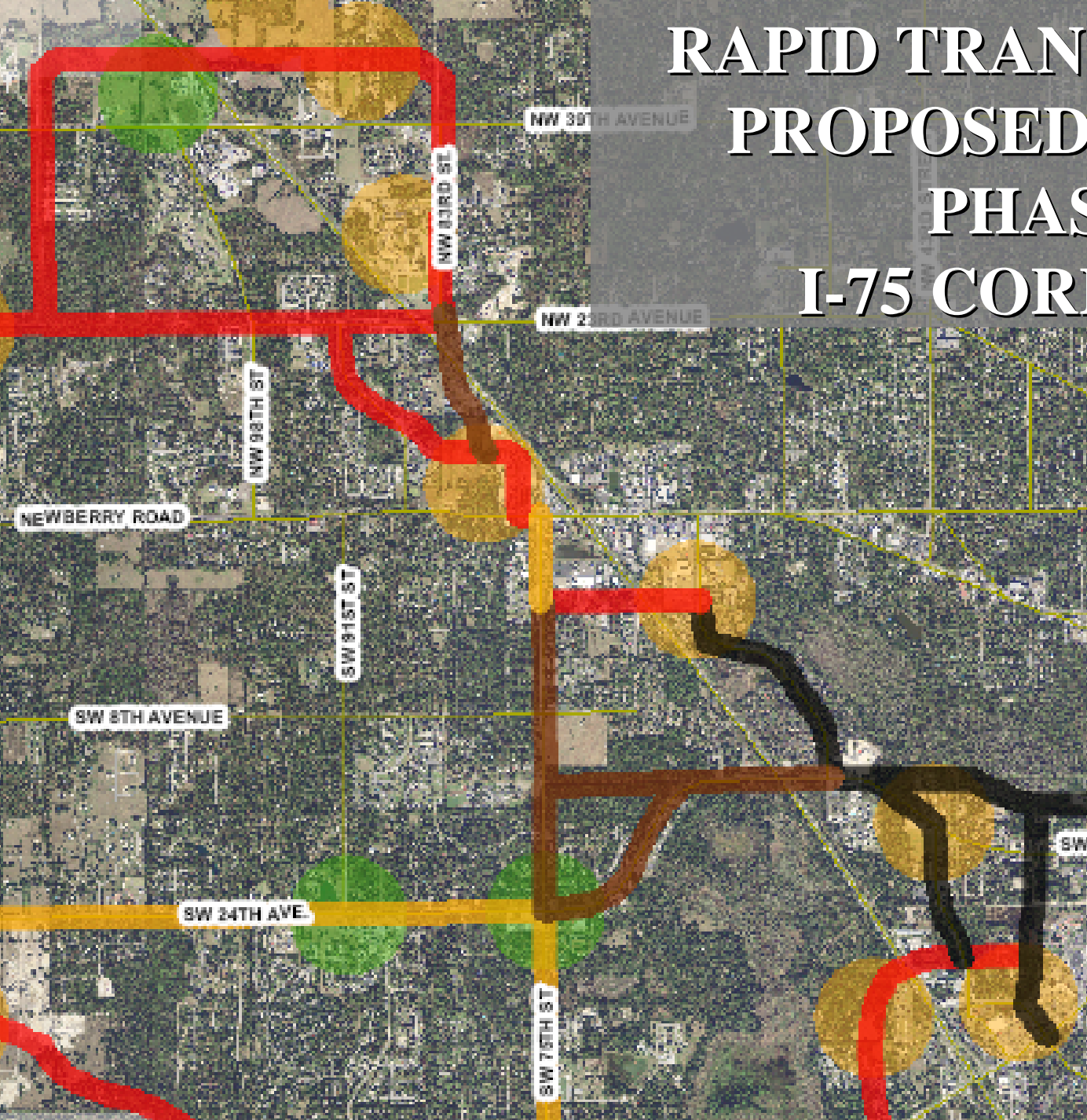


Prepared by:

Board of County Commissioners
Department of Growth Management
10 SW 2nd Avenue
Gainesville, FL 32601
(352) 374-5249

<http://growth-management.stachua.fl.us/>

RAPID TRANSIT LANES PROPOSED INITIAL PHASE: I-75 CORRIDOR



BICYCLE/PEDESTRIAN GOALS

ACHIEVE "PLATINUM" LEVEL BICYCLE FRIENDLY COMMUNITY STATUS

**LEAGUE OF
AMERICAN BICYCLISTS**



MULTI-USE BIKE / PEDESTRIAN FACILITY ON ALL MAJOR ROADS IN URBAN AREA



5 foot



6 foot



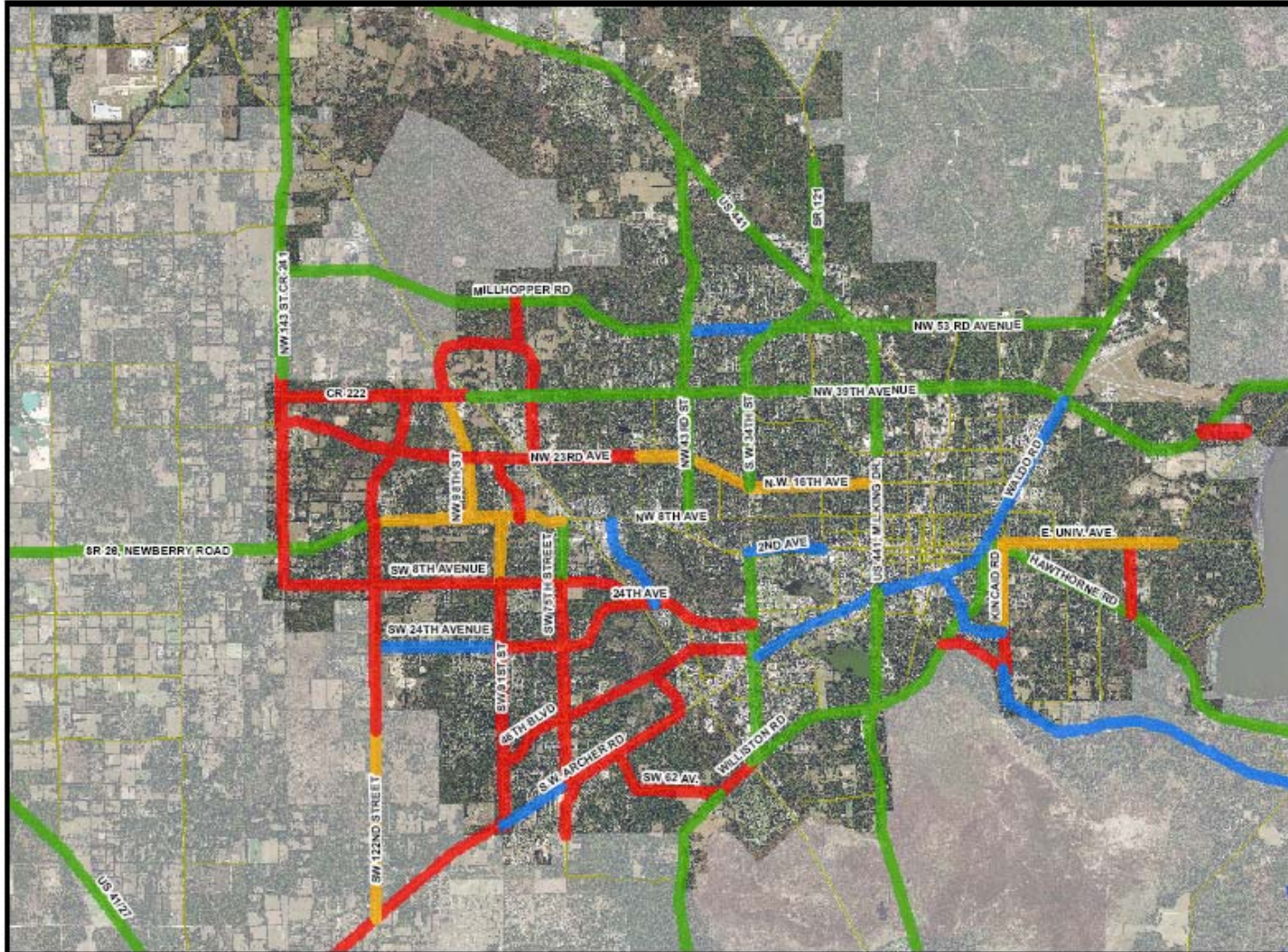
8 foot



10 foot





BIKE LANES/ PAVED SHOULDERS ON MOST MAJOR ROADS IN URBAN AREA



BICYCLE / PEDESTRIAN FACILITIES



**Long Term
Bike/Pedestrian
Infrastructure Plan
-Draft-**


Legend

-  Existing multi-use facility
-  Existing bike lane/shoulder
-  Future multi-use facility
-  Future bike lane/shoulder



 Miles

Notes:
 This map has not been adopted or approved by the Board of County Commissioners. It is a working draft only.
 Production Date: 9/03/08

Prepared by:
 Board of County Commissioners
 Department of Growth Management
 10 SW 2nd Avenue
 Gainesville, FL 32601
 (352) 374-5249
<http://growth-management.salachua.fl.us/>



COMPREHENSIVE PLAN AMENDMENT

TCMA, MMTD or HYBRID

ENACT TOD POLICIES

REVISE TND POLICIES

FINALIZE INFRASTRUCTURE PLAN

ADOPT MOBILITY FEE