

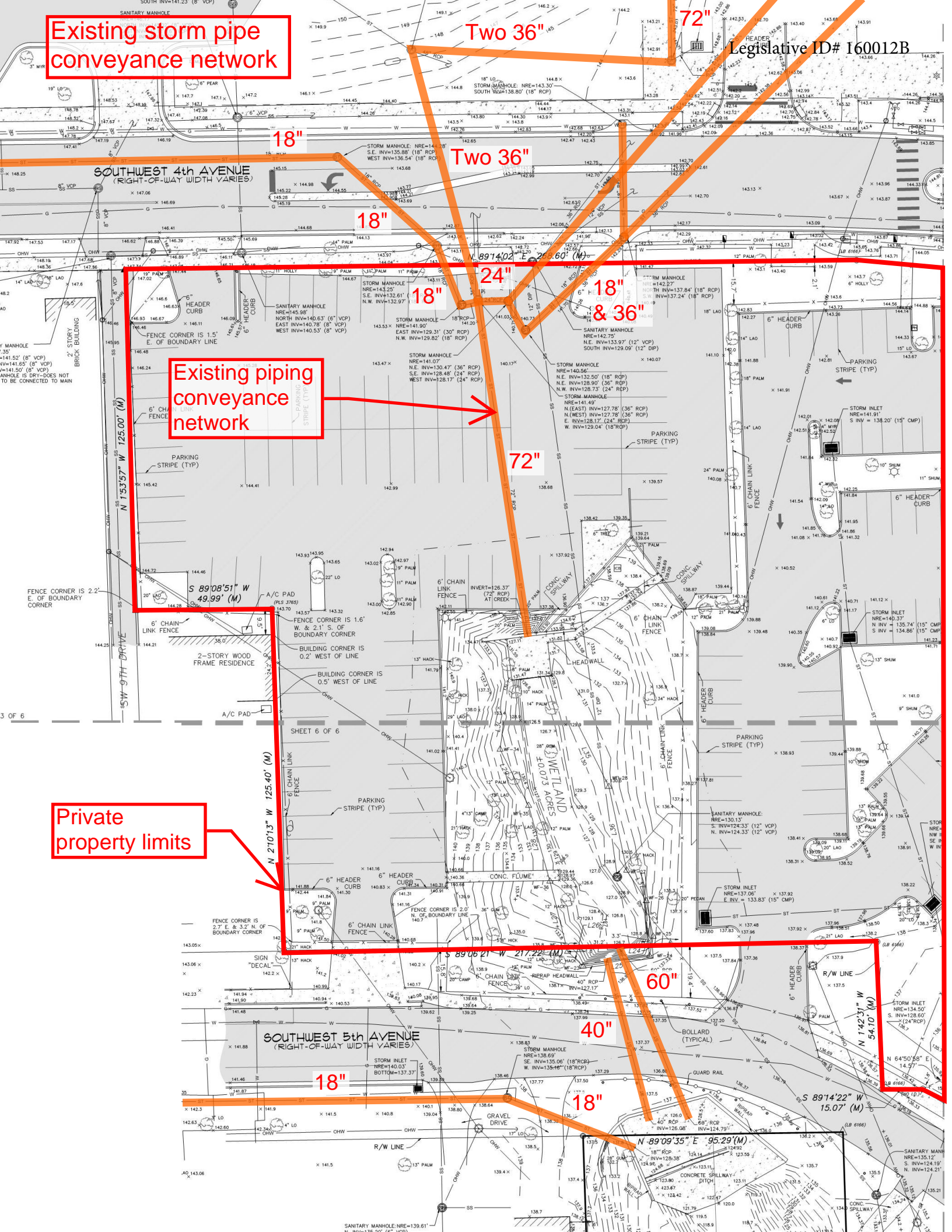
SOUTH INVERT=141.23 (8" VCP)

Legislative ID# 160012B

Existing storm pipe conveyance network

Existing piping conveyance network

Private property limits



SOUTHWEST 4th AVENUE
(RIGHT-OF-WAY WIDTH VARIES)

18"

Two 36"

72"

18"

24"

18"
& 36"

72"

S 89°08'51" W
49.99' (M)

N 27°01'3" W
125.40' (M)

S 89°06'21" W
217.22' (M)

60"

SOUTHWEST 5th AVENUE
(RIGHT-OF-WAY WIDTH VARIES)

18"

40"

18"

N 89°09'35" E
95.29' (M)

S 89°14'22" W
15.07' (M)

N 142°31' W
54.10' (M)

SANITARY MANHOLE: NRE=139.61'

Proposed storm pipe conveyance network

Existing piping conveyance network

Proposed piping conveyance network

Private property limits

SW 9TH DRIVE

FILL TO ELEVATION 138.0
AREA TO BE STRIPPED OF GRASS AND
ORGANIC MATERIAL, FILL MATERIAL SHALL BE
CLEAN SUITABLE SOIL WITH A PERMEABILITY
RATE OF 20 FT/DAY AND NO MORE THAN
5% PASSING THE NO. 200 SIEVE.

