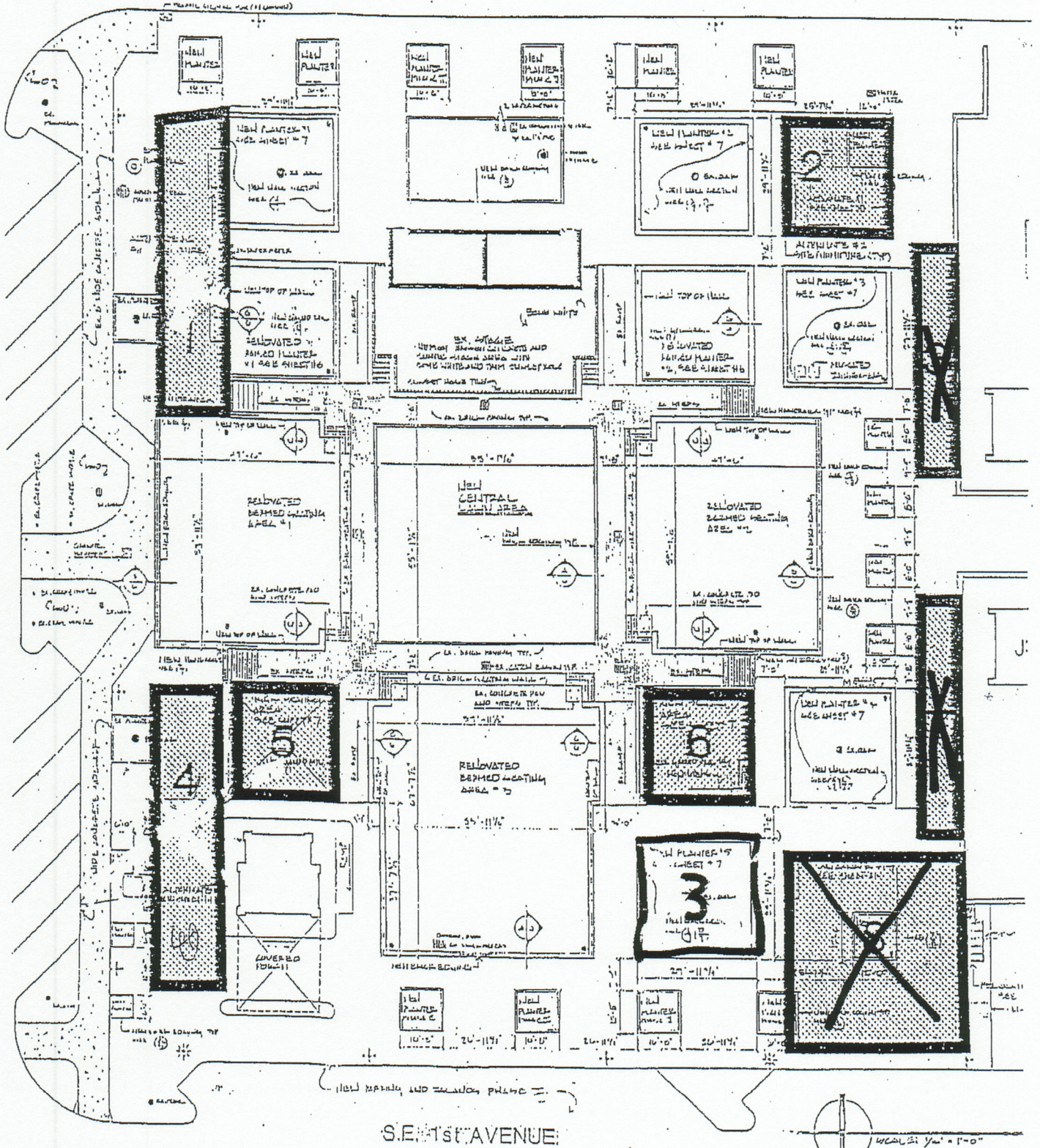


LEGISLATIVE #

110283

E. UNIVERSITY AVENUE

S.E. 1st STREET



MOBILE FOOD CARTS APPROVED LOCATIONS



LOCATION "F"

Prepared by the Dept. of Community Development June 1998

SCALE: 1 inch = 200 feet



MOBILE FOOD CARTS APPROVED LOCATIONS



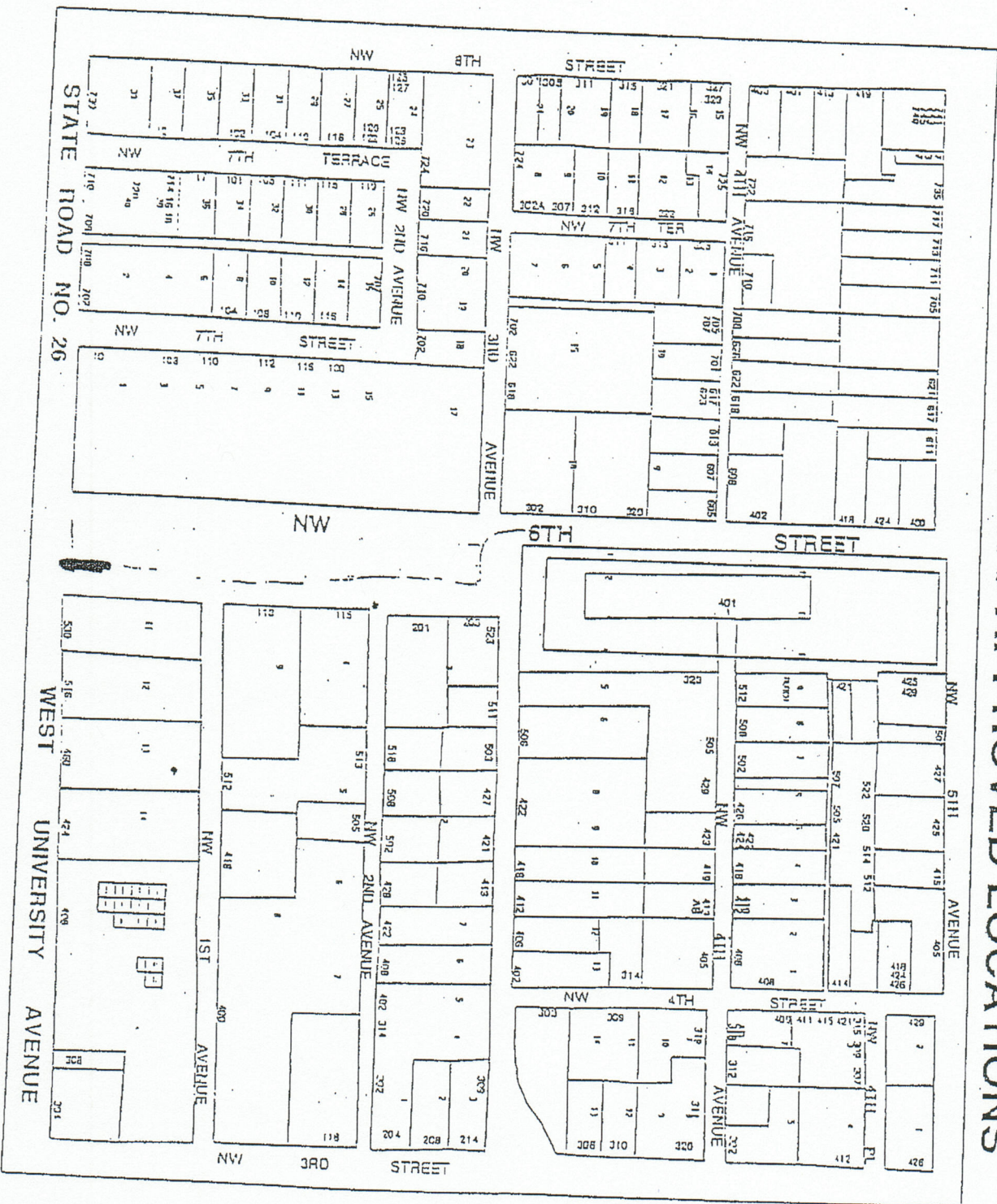
LOCATIONS

Plotted by the Dept. of Community Development June 1990

SCALE: 1 inch = 250 feet



MOBILE FOOD CARTS APPROVED LOCATIONS



LOCATION "D"

Prepared by the Dept. of Community Development June 1998

SCALE: 1 inch = 200 feet

