

Mobility Workshop



Malisa McCreedy, AICP
Director of Mobility
3 September 2019

Workshop Overview

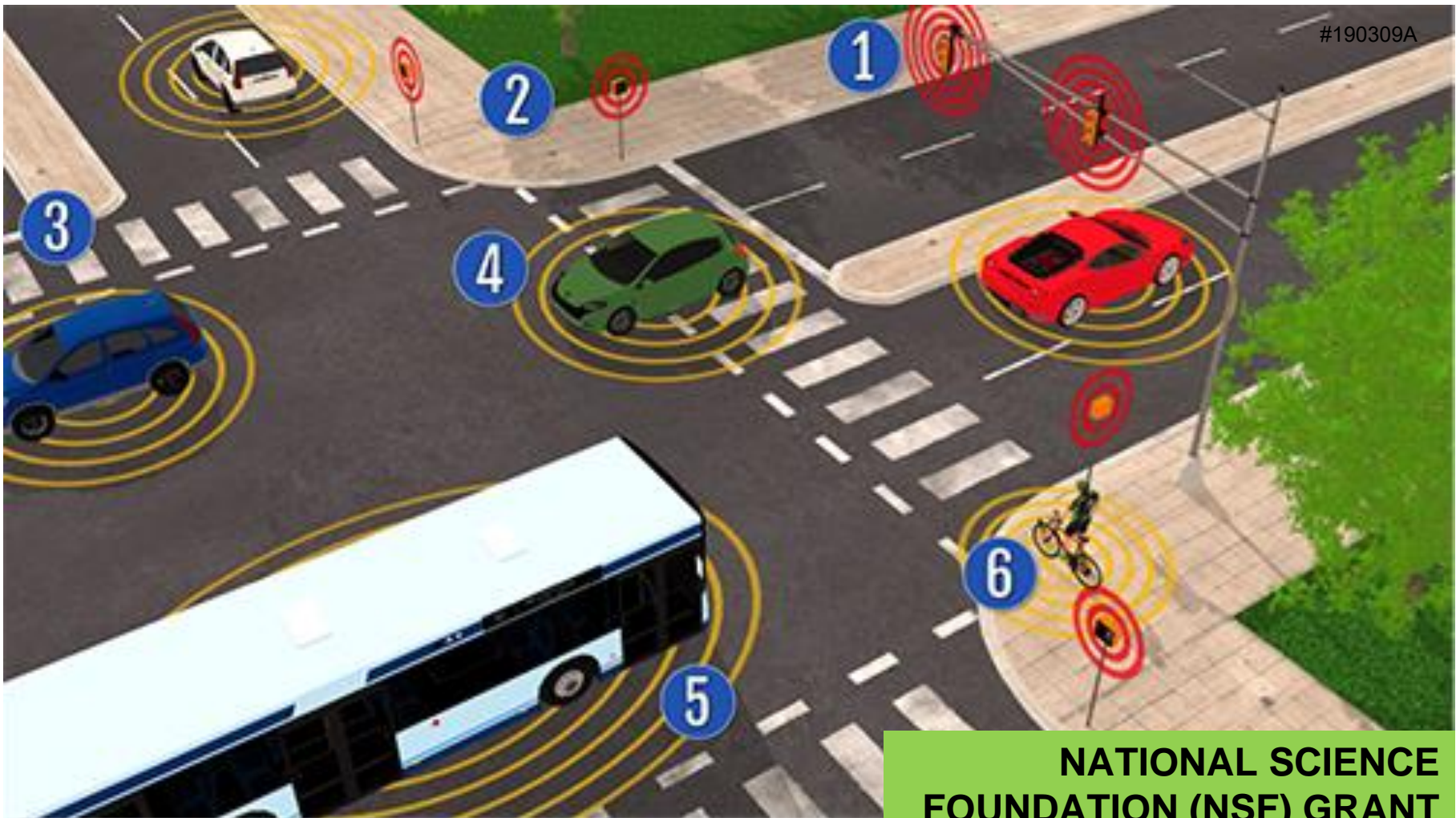
Key Updates:

- NSF Grant
- Autonomous Vehicle Shuttle
- Dockless Mobility Ordinance
- Microtransit Update
- Mobility Hub Data Analysis

Main Topic:

- Transit Development Plan (TDP)





**NATIONAL SCIENCE
FOUNDATION (NSF) GRANT**

AUTONOMOUS VEHICLE SHUTTLE





DOCKLESS MOBILITY



**Amelia Earhart, 1935
early adopter of dockless
mobility**

MICROTRANSIT



FREE OF CHARGE | Eastwood Meadows Area to Rosa Parks Transfer Station



*Yellow area of the map is the pick up zone. call 352-393-Ride (7433) for information

Where will this service happen ■ (*Yellow in the map) Service area East of SE 43rd Street(between SE 43rd Street & SE 51st Street & between NE 4th Place & SE 24th Avenue).

What is it ■ Service that will pick you up at your home & drop you off at Rosa Parks Transfer Station.

■ Service information 352-393-Ride (7433)



How to ride

- You can also flag a driver in the pick up zones.
- Monday thru Friday the morning service will be from **5:30-9:00 AM** in the evening the service will be from **4:30 - 8:00 PM**

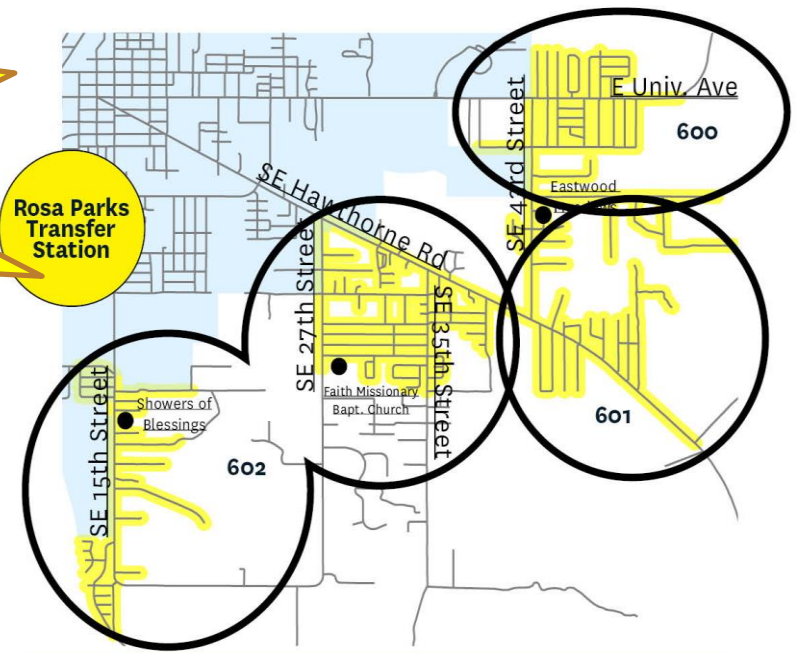
Gainesville.
MOBILITY

Gainesville.
Public-empowered.
People-empowered.

MICROTRANSIT LAST MILE-FIRST MILE

FREE OF CHARGE | Service in EAST GAINESVILLE

Microtransit solutions improve the rider's experience by operating small-scale, on-demand public transit services that can offer fixed routes schedules, as well as flexible routes and on-demand scheduling.



Three zones in East Gainesville serving Rosa Parks Transfer Station: 600; 601; 602

New zone added to the Last Mile-First Mile service!
South of SE Hawthorne Rd East of SE 15th Street & West of SE 35th Street

150

Haile Plantation to UF Campus

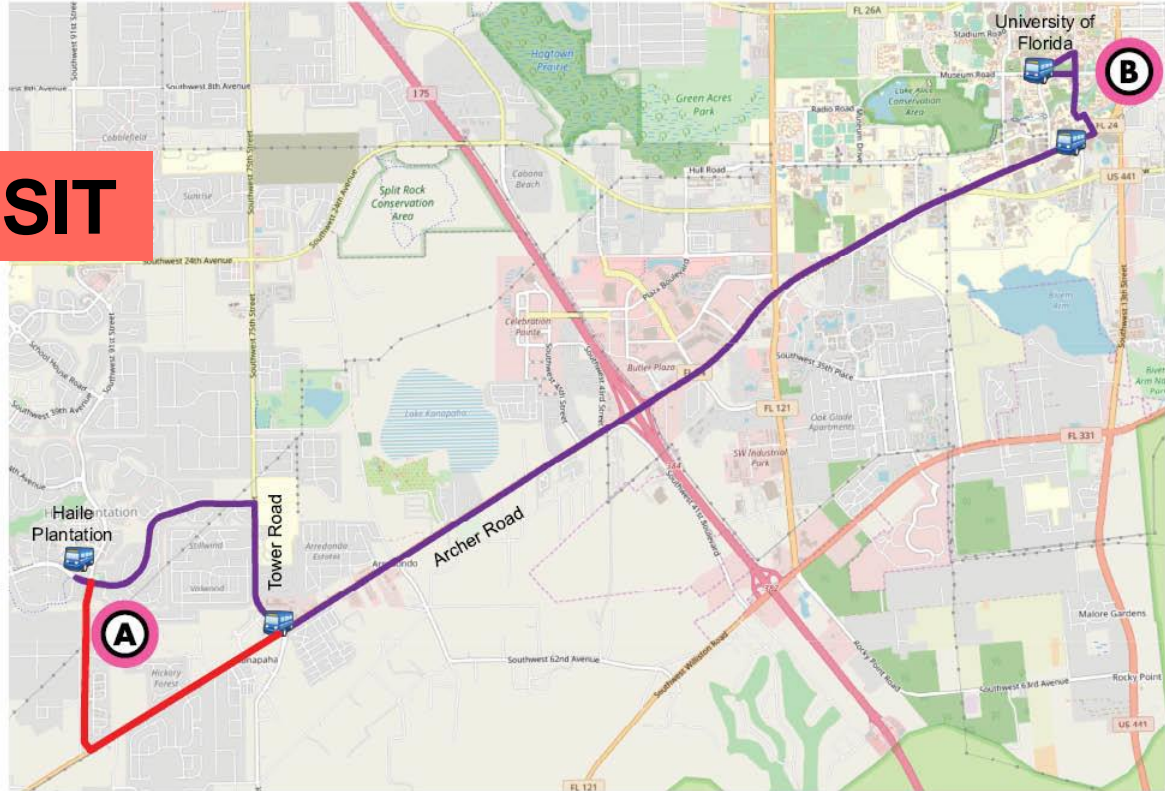
Route

Monday to Friday Every 30 min.

Saturday No Service

Sunday No Service

MICROTRANSIT



MOBILITY HUB LOCATION ANALYSIS

- ❖ 27 Layers of data
- ❖ 5 Groups to review the layers
 - Physical
 - Economics
 - Demographic
 - Access by transit
 - Behavior
- ❖ Scenario Planning to account for city priorities, needs and focus
 - Equal Consideration - for all Groups
 - Complement Infrastructure – focused on access to transportation options
 - Improve Commuting
 - Leverage Infrastructure – focused on existing physical layers
 - Equity – focus on disadvantaged/vulnerable populations
- ❖ 9 Candidate Mobility Hubs identified and analyzed with recommendations for types of mobility options to “feed” fixed route bus transit

MOBILITY HUB LOCATIONS

