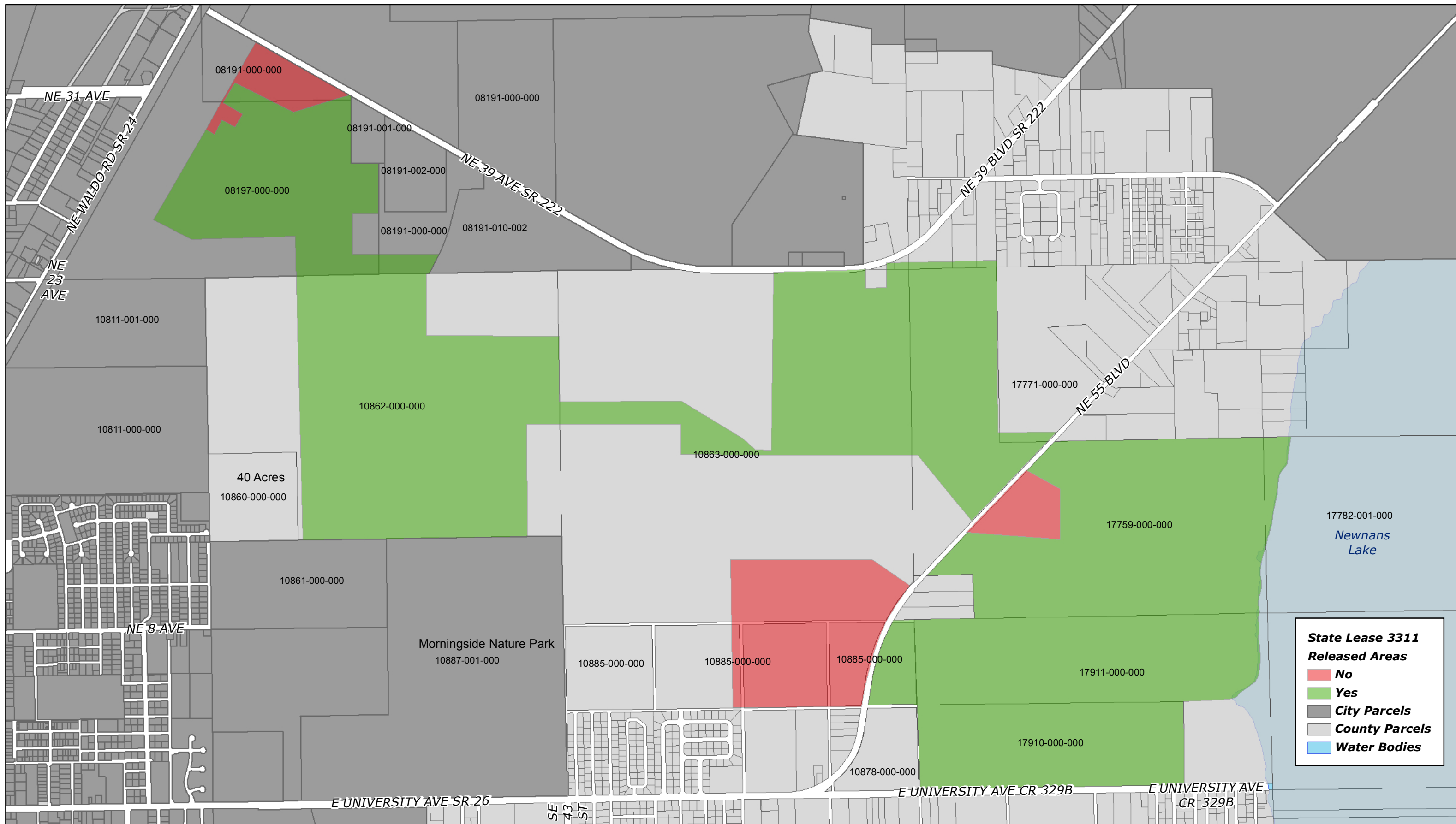


LEGISLATIVE #

080477E

Possible Retained/Vacated Areas From State Lease 3311



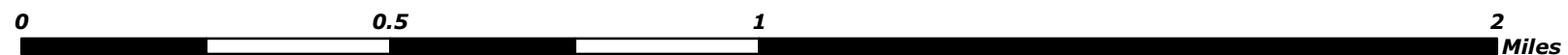
State Lease 3311 Released Areas

- No
- Yes

City Parcels
■ City Parcels
■ County Parcels

Water Bodies
■ Water Bodies

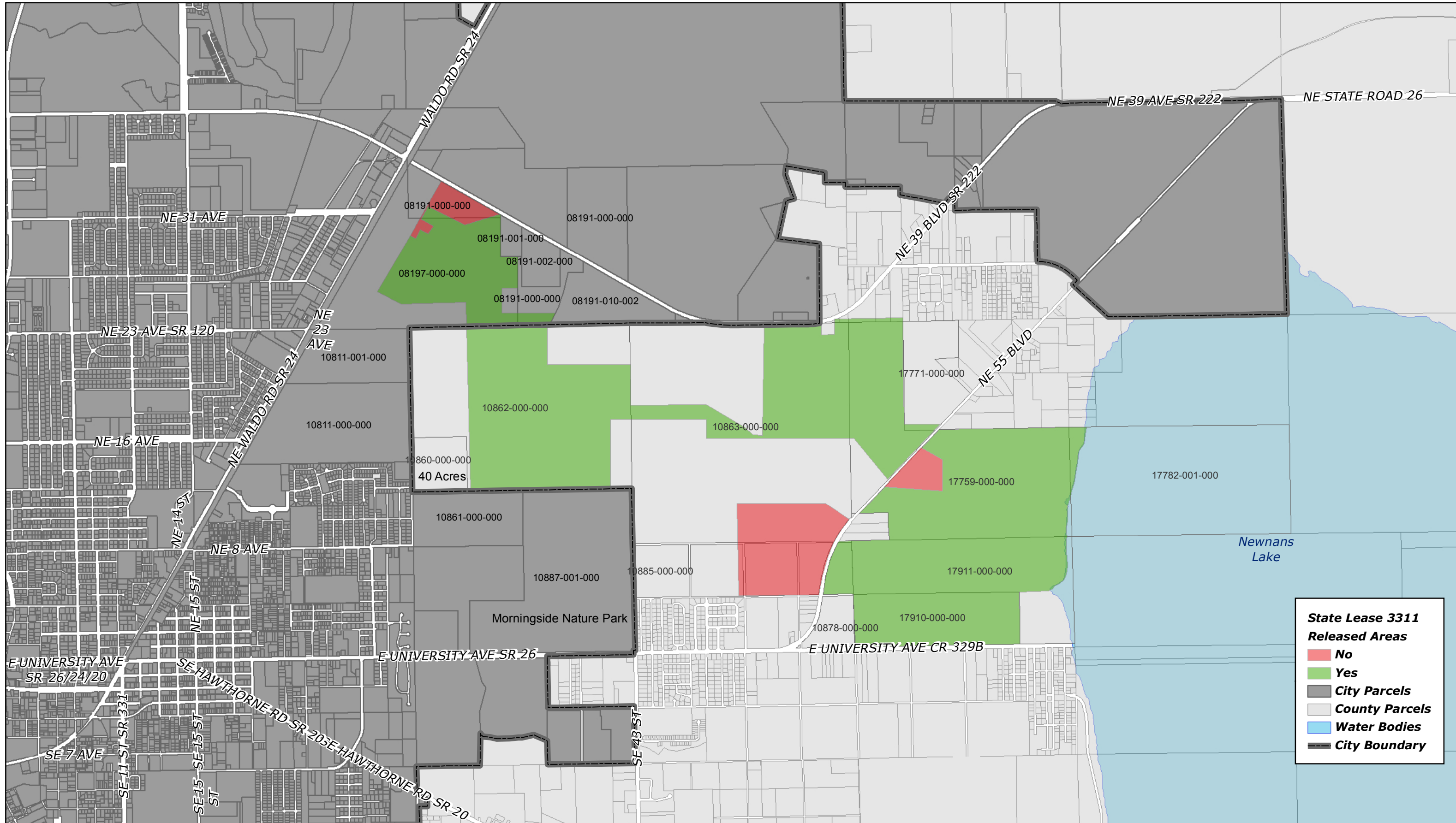
This is not a survey and should not be construed as such



The City of Gainesville has prepared the information depicted on this map for its own use. It is not intended to be, nor should it be, relied upon by others for any purpose. The City of Gainesville assumes no responsibility for errors or omissions in the information on this map. For more information contact Public Works Dept GIS, (352) 334-5070. This map was created on 08/01/2012.



Possible Retained/Vacated Areas From State Lease 3311



State Lease 3311 Released Areas

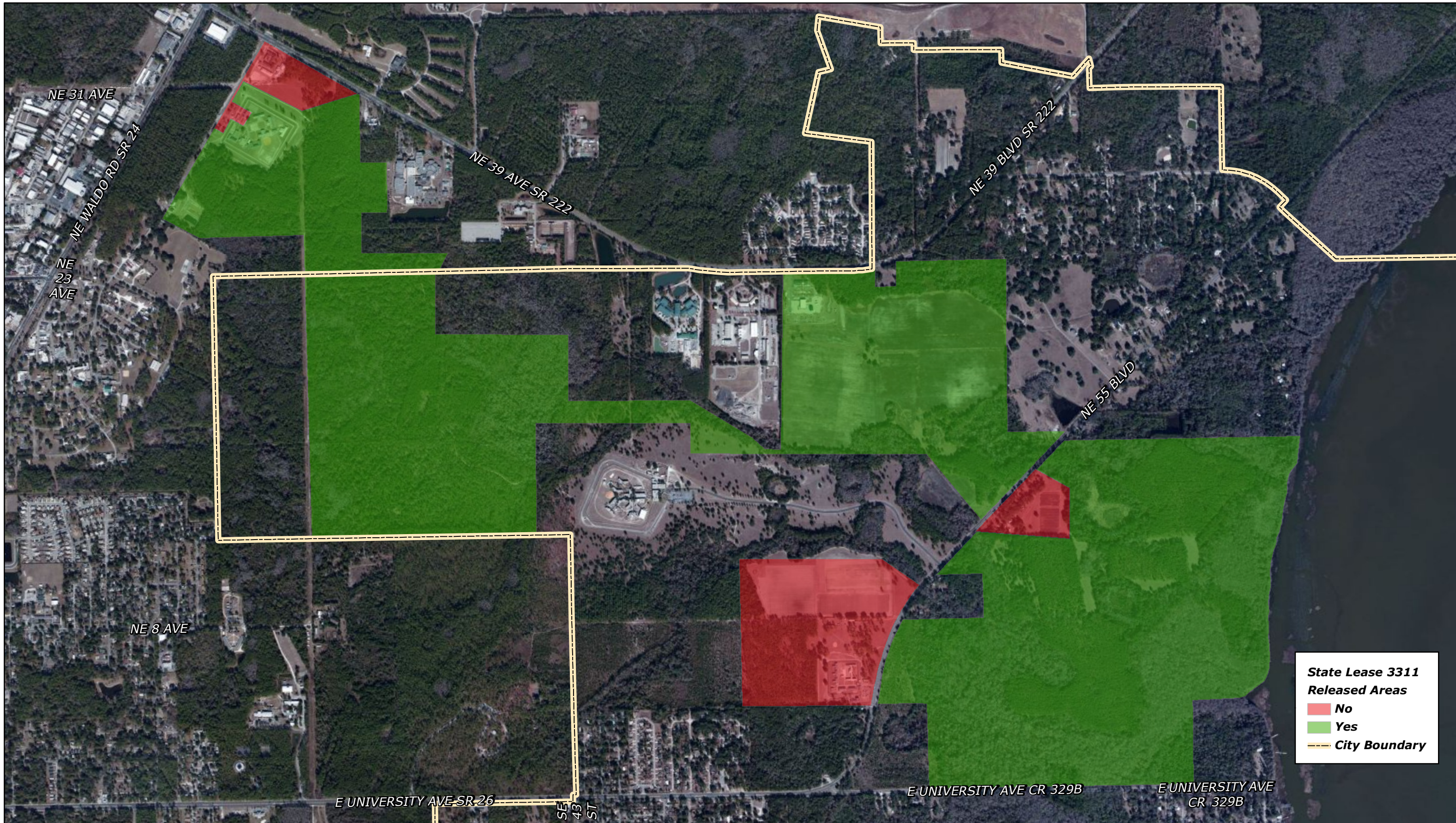
- No
- Yes
- City Parcels
- County Parcels
- Water Bodies
- City Boundary

The City of Gainesville has prepared the information depicted on this map for its own use. It is not intended to be, nor should it be, relied upon by others for any purpose. The City of Gainesville assumes no responsibility for errors or omissions in the information on this map. For more information contact Public Works Dept GIS, (352) 334-5070. This map was created on 08/01/2012.

This is not a survey and should not be construed as such



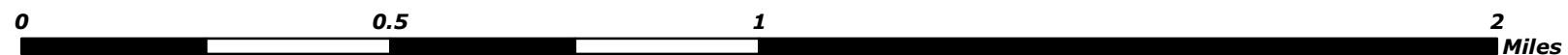
Possible Retained/Vacated Areas From State Lease 3311



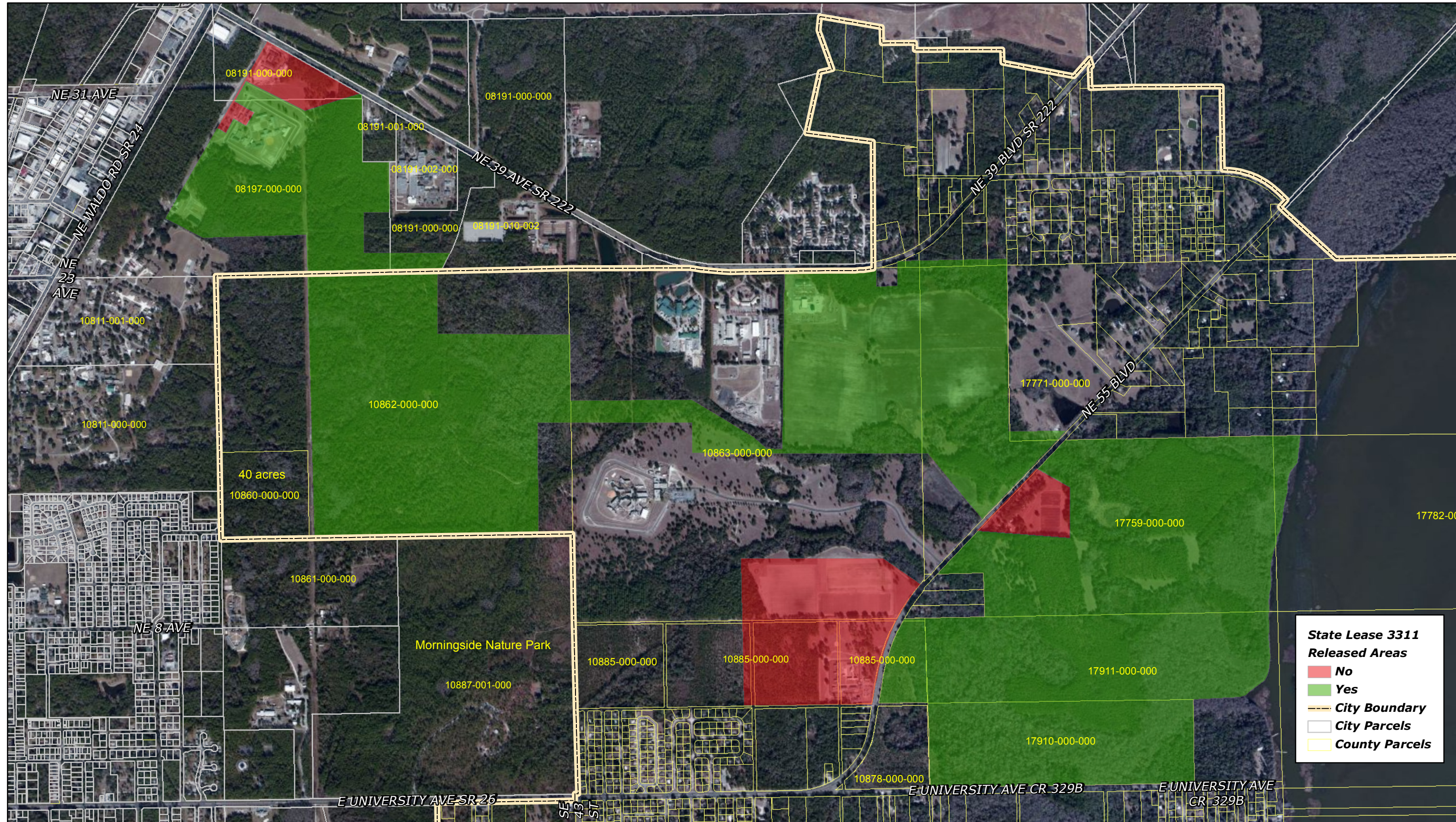
The City of Gainesville has prepared the information depicted on this map for its own use. It is not intended to be, nor should it be, relied upon by others for any purpose. The City of Gainesville assumes no responsibility for errors or omissions in the information on this map. For more information contact Public Works Dept GIS, (352) 334-5070. This map was created on 08/01/2012.



This is not a survey and should not be construed as such



Possible Retained/Vacated Areas From State Lease 3311



State Lease 3311 Released Areas

- No
- Yes
- City Boundary
- City Parcels
- County Parcels

This is not a survey and should not be construed as such

The City of Gainesville has prepared the information depicted on this map for its own use. It is not intended to be, nor should it be, relied upon by others for any purpose. The City of Gainesville assumes no responsibility for errors or omissions in the information on this map. For more information contact Public Works Dept GIS, (352) 334-5070. This map was created on 08/01/2012.

