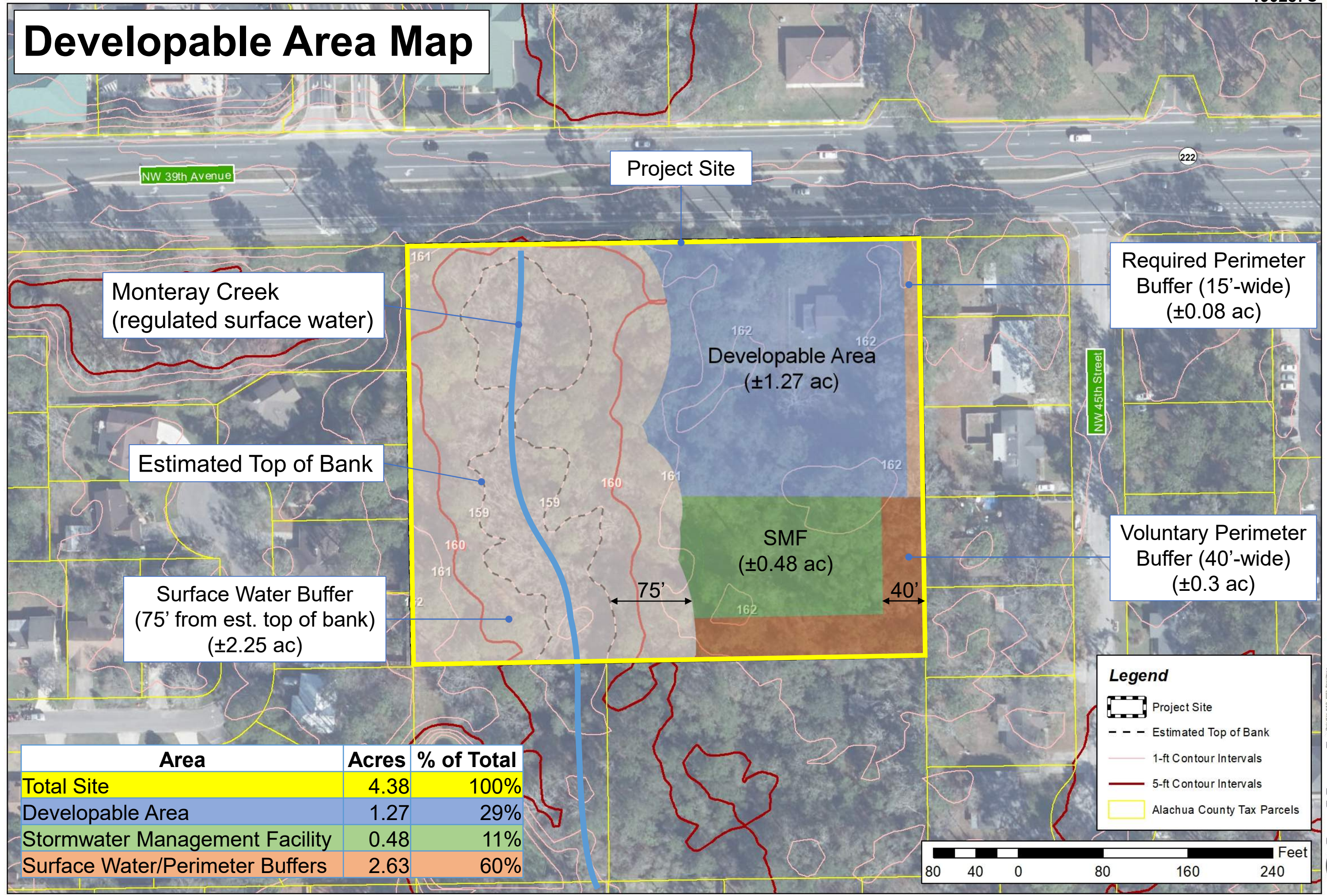


# Developable Area Map



Monteray Creek  
(regulated surface water)

Project Site

Required Perimeter  
Buffer (15'-wide)  
(±0.08 ac)

Estimated Top of Bank

Developable Area  
(±1.27 ac)

Voluntary Perimeter  
Buffer (40'-wide)  
(±0.3 ac)

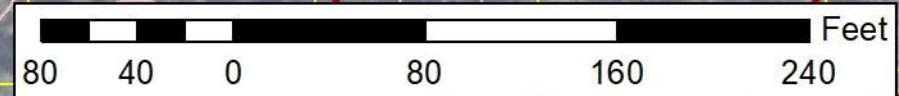
Surface Water Buffer  
(75' from est. top of bank)  
(±2.25 ac)

SMF  
(±0.48 ac)

**Legend**

- Project Site
- Estimated Top of Bank
- 1-ft Contour Intervals
- 5-ft Contour Intervals
- Alachua County Tax Parcels

Area	Acres	% of Total
Total Site	4.38	100%
Developable Area	1.27	29%
Stormwater Management Facility	0.48	11%
Surface Water/Perimeter Buffers	2.63	60%



Alachua County Tax Parcel # 06111-005-000  
Ss-CPA and Rezoning

