

13th Street Bridge Enhancement Design Competition



August 20, 2007

Project Proposal

- The CRA wishes to seek professional services for design development through competitive process for enhancement of the 13th Street Overpass Bridge.
- This competition will explore exciting ways to improve the aesthetics of this existing bridge and provide a vibrant point of entrance to the City of Gainesville, University of Florida and Shands Hospital.

Design Competition



- The Competition will be open to architects, engineers, and others to create visionary proposals for this important landmark.

Design Competition



- Staff aims to use a competition similar to that used by the City of Pittsburgh in the design of the West End Pedestrian Bridge.

Location

- The 13th Street Pedestrian Bridge Overpass is situated at the junction of Highway 441 and SW Archer road.
- It welcomes visitors to the City, University of Florida, and Shands Hospital.
- The overpass is the main connecting point between two sections of the existing trail known as the Depot Avenue Rail Trail.

13th Street Bridge

- According to FDOT the Bridge is currently in fair condition. It was built as a railroad bridge over State Highway 441. With the abandoning of the railroad and construction of the rail-trail, the bridge was converted into pedestrian walkway.



The Bridge

- The bridge was converted by installing; guard cage and asphalt paving for trail use.
- Trail area within the bridge does not meet the current code for guardrails height of 54”.



The Bridge

- The caged superstructure topped with razor wire is a less than desirable image for the trail user and traffic below.



The Bridge

- The utility lines strapped to the bridge base also contribute to the structure's unpleasing aesthetic.



Bridge Structure

- The existing base structure is able to support more than the existing trail and cage structure.



Selection Process

This is a two-stage design competition.

- **Stage I** is comprised of an open design competition and a Request for Qualifications process issued to a number of architectural and engineering firms with relevant project experience in their portfolio.

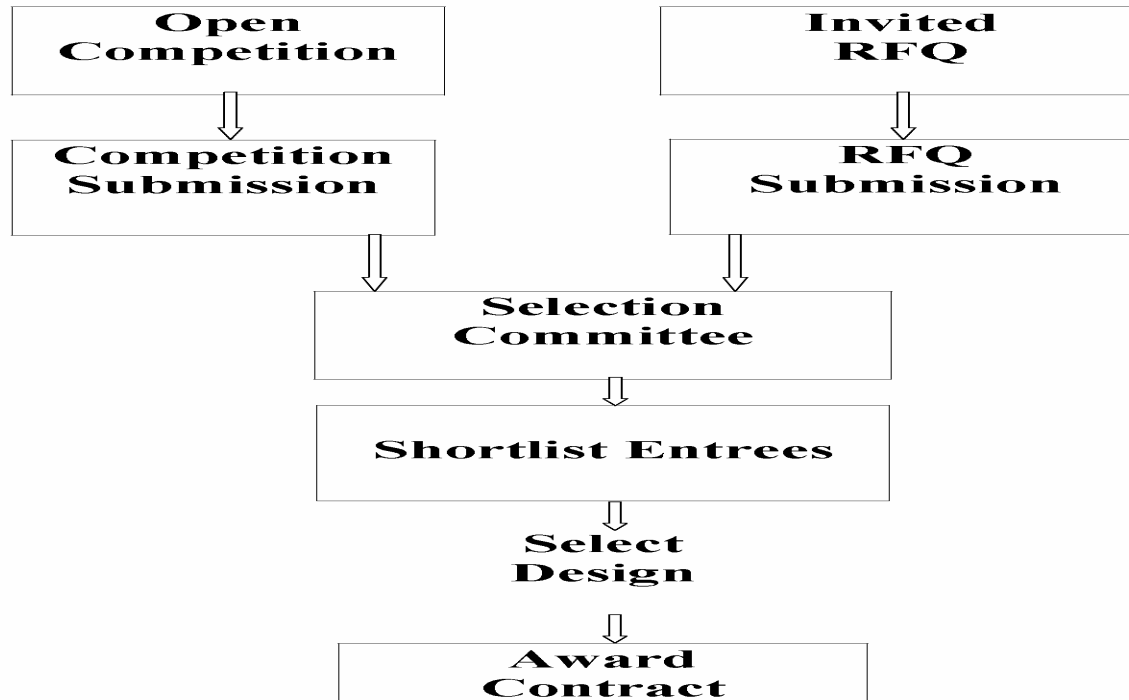
Selection Process

- At the end of Stage I the competition entries will be selected and the top three schemes will be awarded cash prizes.
- **Stage II** is a limited competition comprised of only the selected Stage I Open Design Competition winners and the firms selected under the RFQ process.

Selection Process

- At the end of Stage II, the selection committee will reconvene and identify the competition's winner.
- The CRA may enter into negotiations with the top-ranked firm for design services for improvement works to 13th Street Pedestrian Bridge.

Competition Structure



Fiscal Note

- The CRA has budgeted \$165,000 in account 618-790-W7355520- Depot Rail Trail (Overpass Improvements) for FY2007 and \$479,638 budgeted in the same account for FY2008.