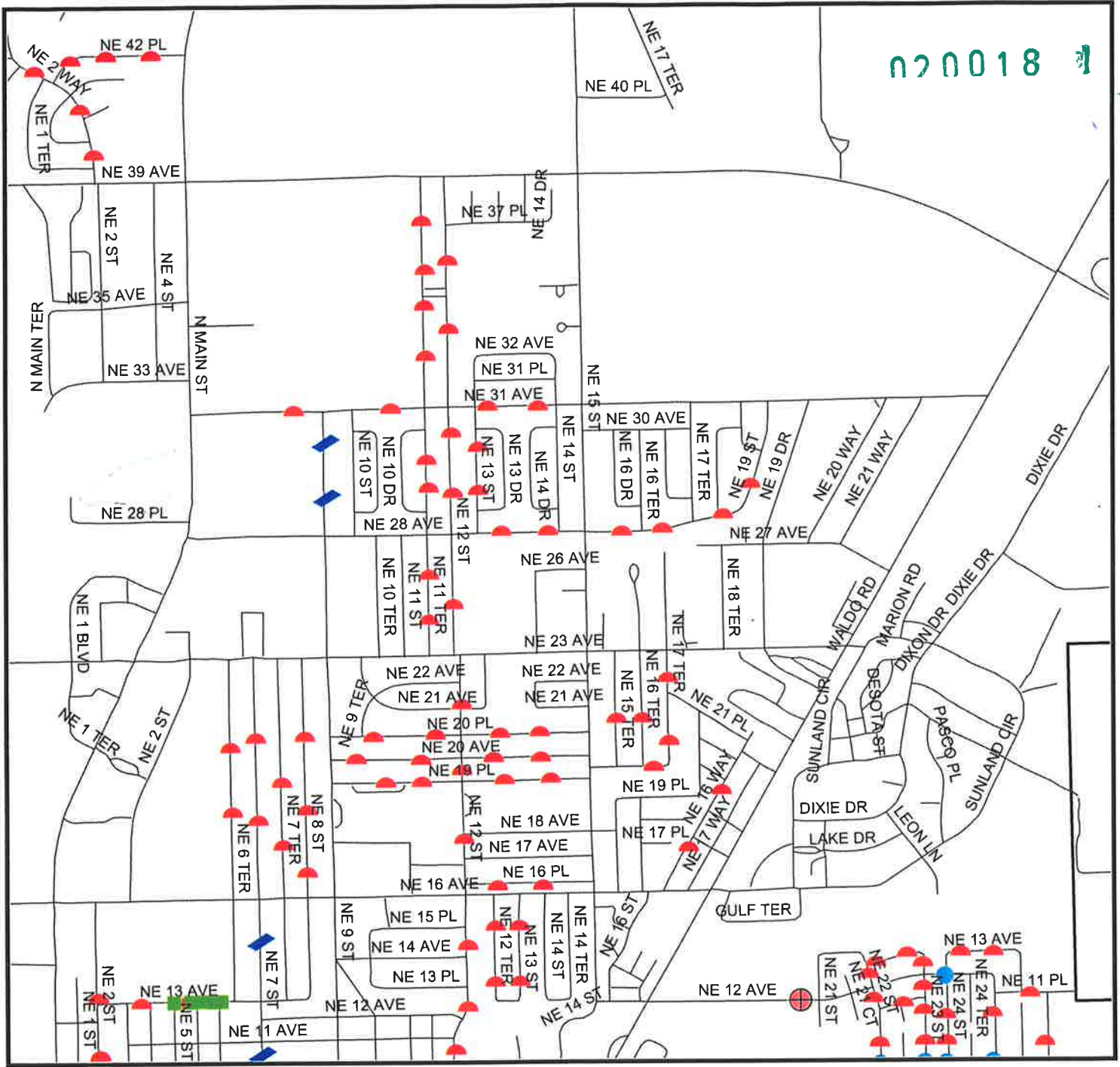


3

020018



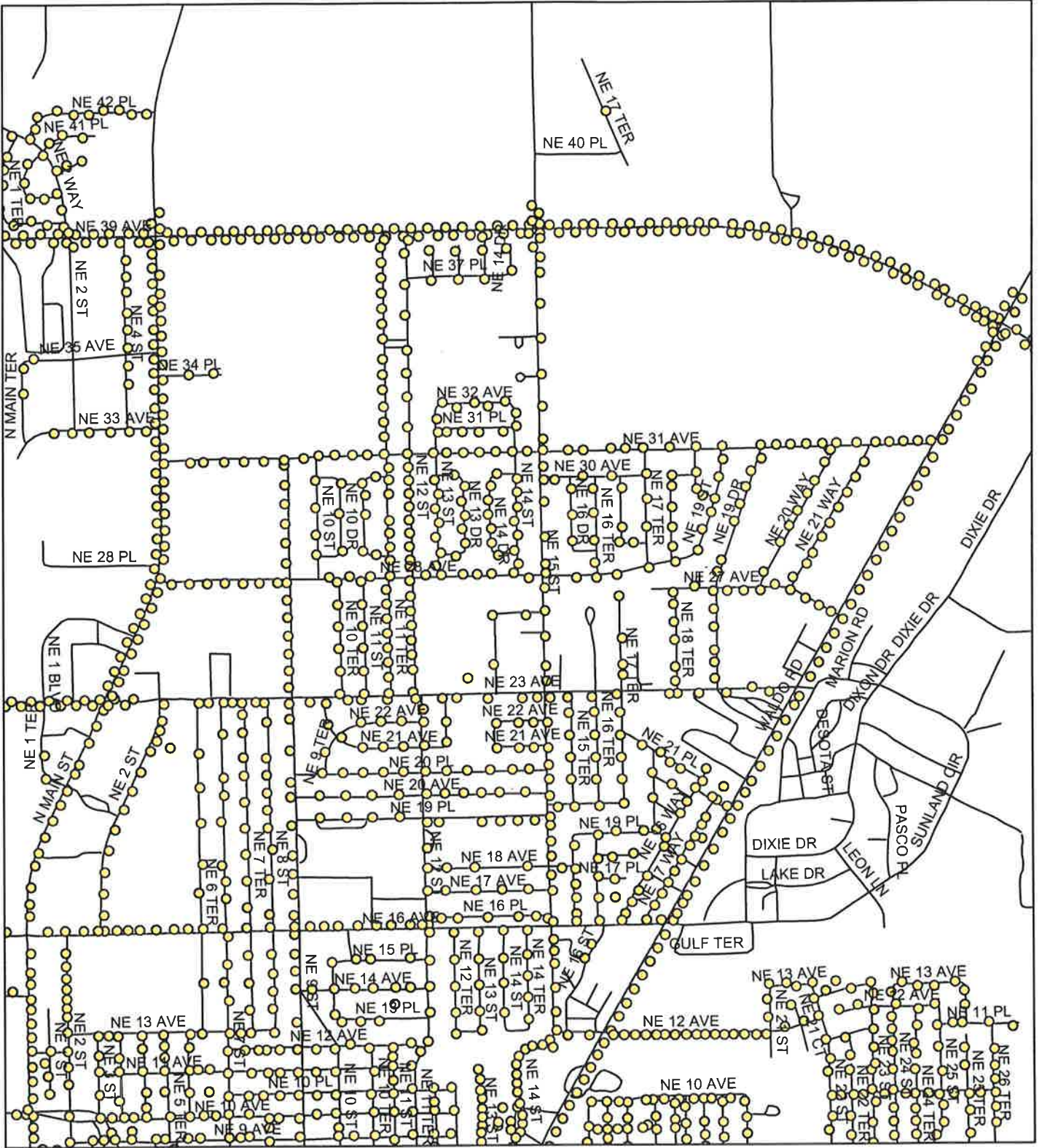
- Legend**
- Choker
 - Divterter
 - Landscape Island
 - Mini Traffic Circle
 - Proposed Speed Hump
 - Proposed Speed Table
 - Roundabout
 - Speed Hump
 - Speed Table
 - Traffic Circle
 - City Limits

City of Gainesville TRAFFIC CALMING



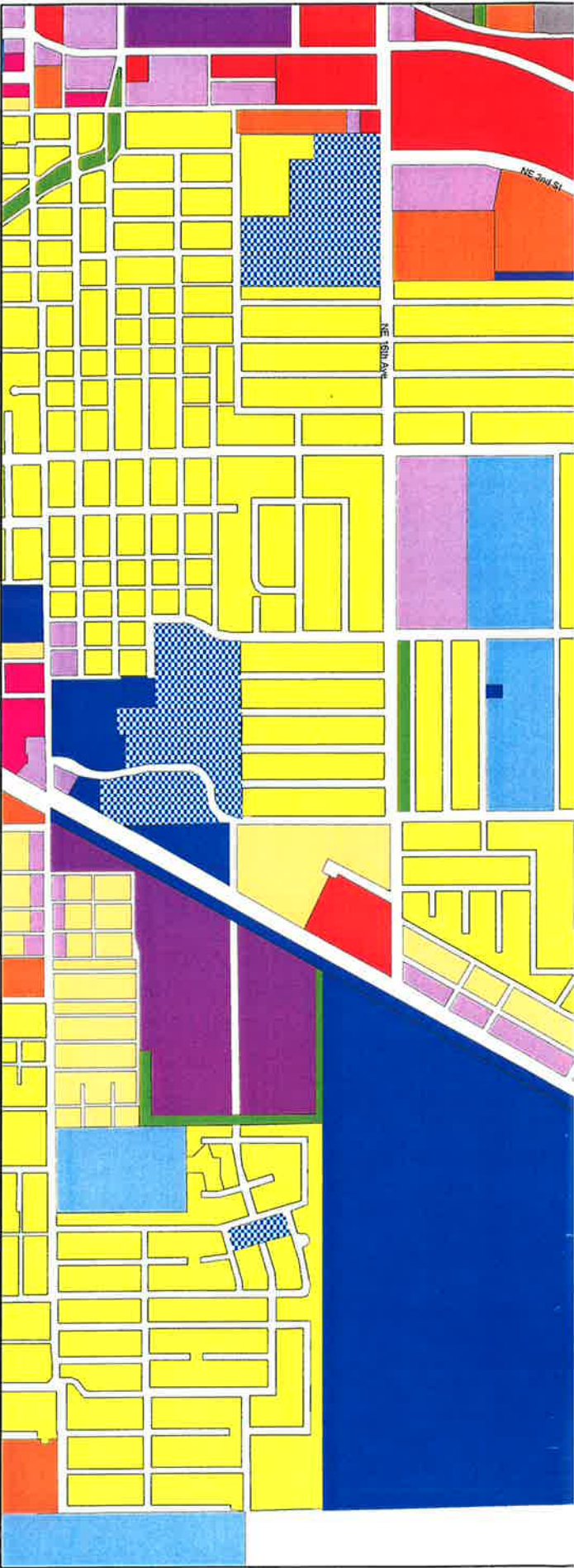
N.T.S.

Prepared by : City of Gainesville
Public Works Department
September, 2002



City Streetlights

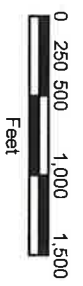




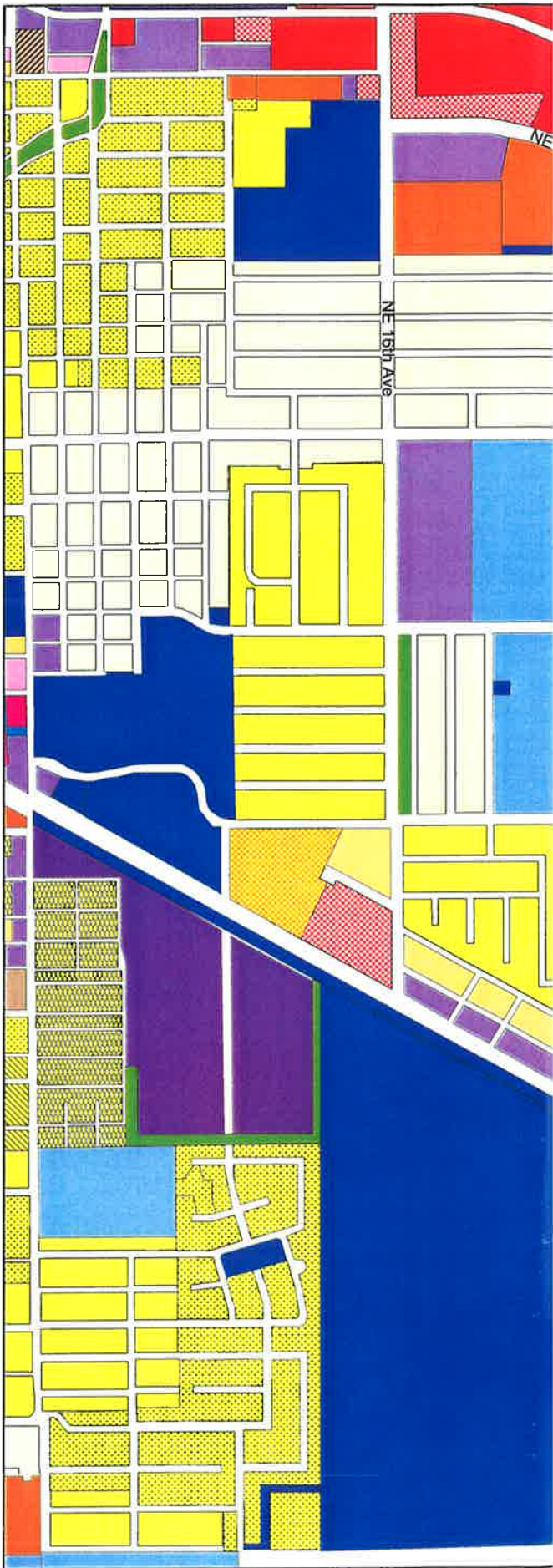
Future Land Use - NE City of Gainesville

Legend

- Single Family
- Residential Low Density
- Residential Medium Density
- Residential High Density
- Mixed Use Residential
- Mixed Use Low
- Mixed Use Medium
- Mixed Use High
- Office
- Commercial
- Industrial
- Education
- Recreation
- Public Facilities
- Agriculture
- Conservation
- Planned Unit Development



City of Gainesville
Gainesville, Florida
Department of
Community Development
September 2002



Zoning - NE

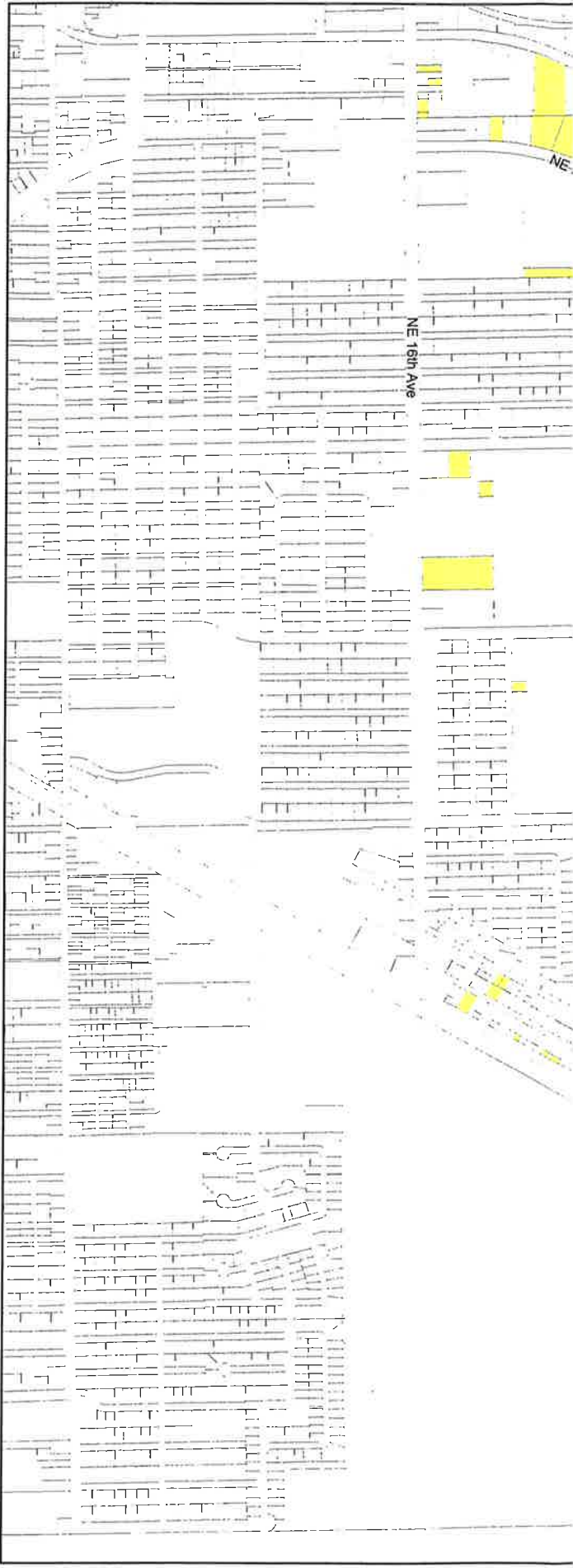
City of Gainesville

Legend

	RSF-1		RMF-7		OR		I-1
	RSF-2		RMF-8		MD		I-2
	RSF-3		RH-1		OF		AGR
	RSF-4		RH-2		CP		CON
	RC		RMU		BUS		PS
	MH		MU-1		BA		AF
	RMF-5		MU-2		BT		ED
	RMF-6		CCD		W		PD



City of Gainesville
 Gainesville, Florida
 Department of
 Community Development
 September 2002



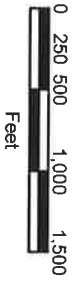
Vacant Parcels - NE

City of Gainesville

Legend

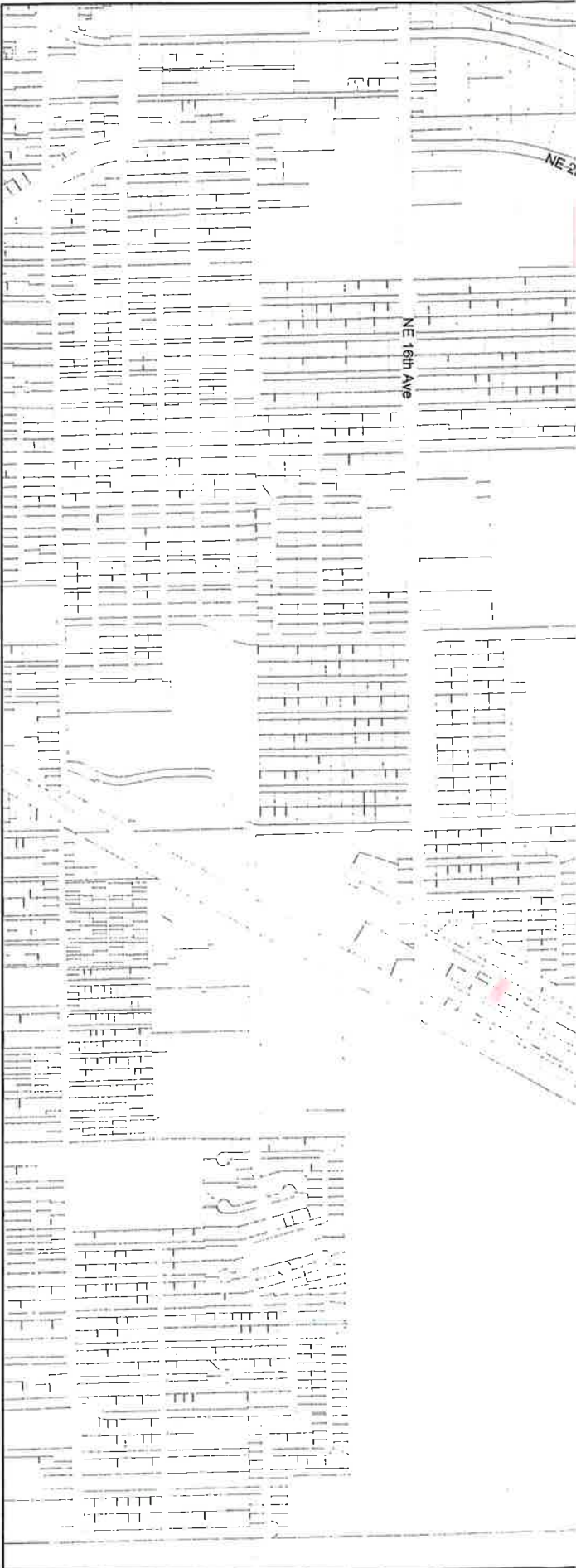
 Vacant Parcels

Vacant Parcels = Unimproved parcels from Alachua County Property Appraiser data.



Within boundary:
 39th Ave on the North;
 16th Ave on the South;
 Main St. on the West;
 and Waldo Road on the East.


City of Gainesville
 Gainesville, Florida
 Department of
 Community Development
 September 2002



Vacant Multi-Family Parcels - NE

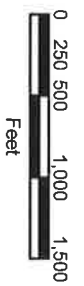
City of Gainesville

Legend

 Vacant Multi-Family (RMF) Parcels

Vacant Parcels = Unimproved parcels from Alachua County Property Appraiser data.

Within boundary:
 39th Ave on the North;
 16th Ave on the South;
 Main St. on the West;
 and Waldo Road on the East.



City of Gainesville
 Gainesville, Florida
 Department of
 Community Development
 September 2002