

LEGISLATIVE #

100851B



Planning and Development Services

PB-11-19 ZON

Presentation to City Commission

July 21, 2011

Legistar No. 100851



Dean Mimms, Lead Planner

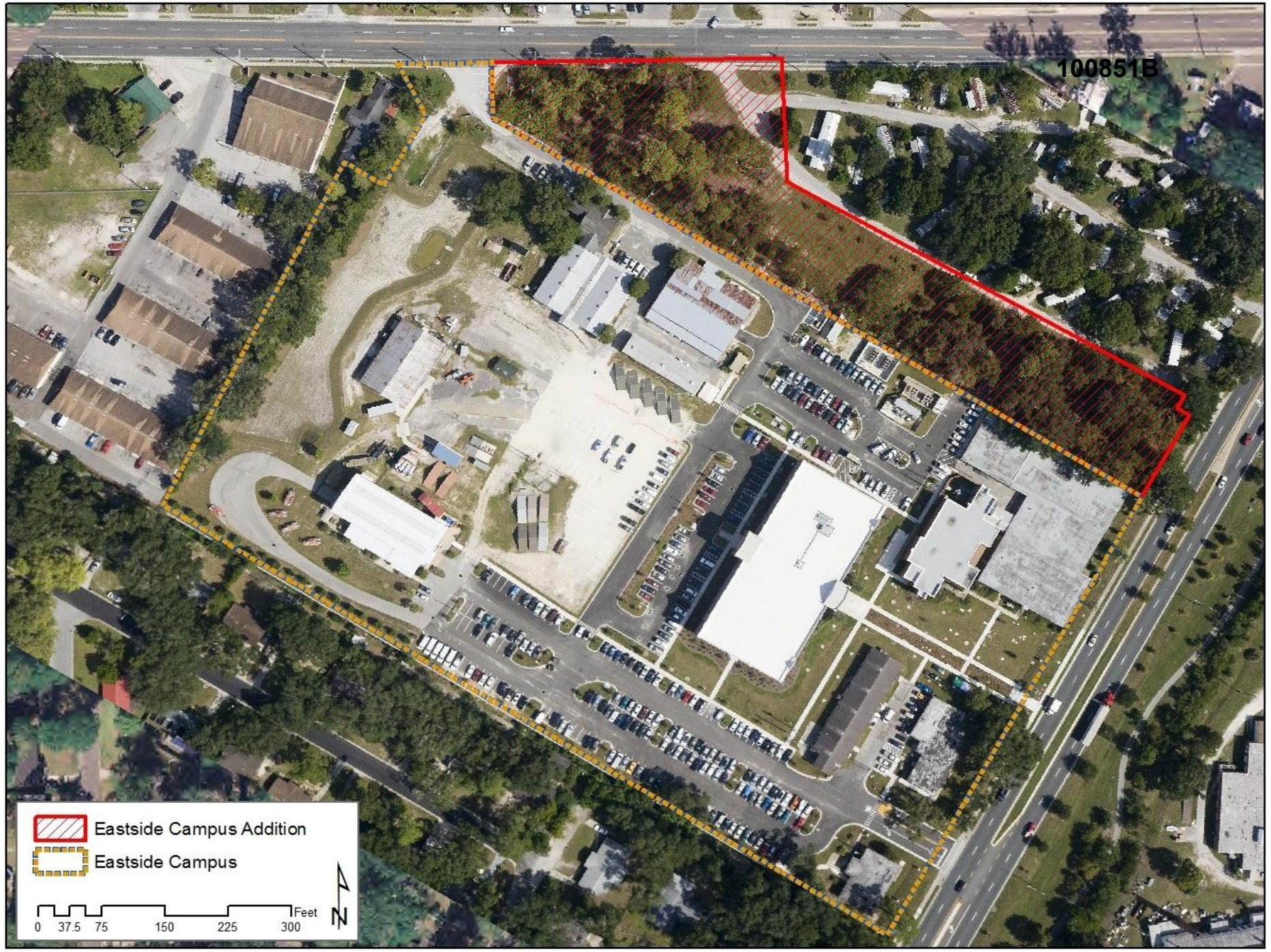
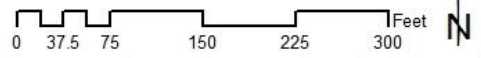
Requests for 14.3-ac UF Eastside Campus

100851B

	Existing	Proposed
<i>Land Use</i>	<i>Public Facilities Residential Low</i>	<i>Education (ED)</i>
Zoning	Public services & operations (PS) 12 units/ac mobile home residential (MH)	Educational services (ED)

100851B

-  Eastside Campus Addition
-  Eastside Campus



100851B

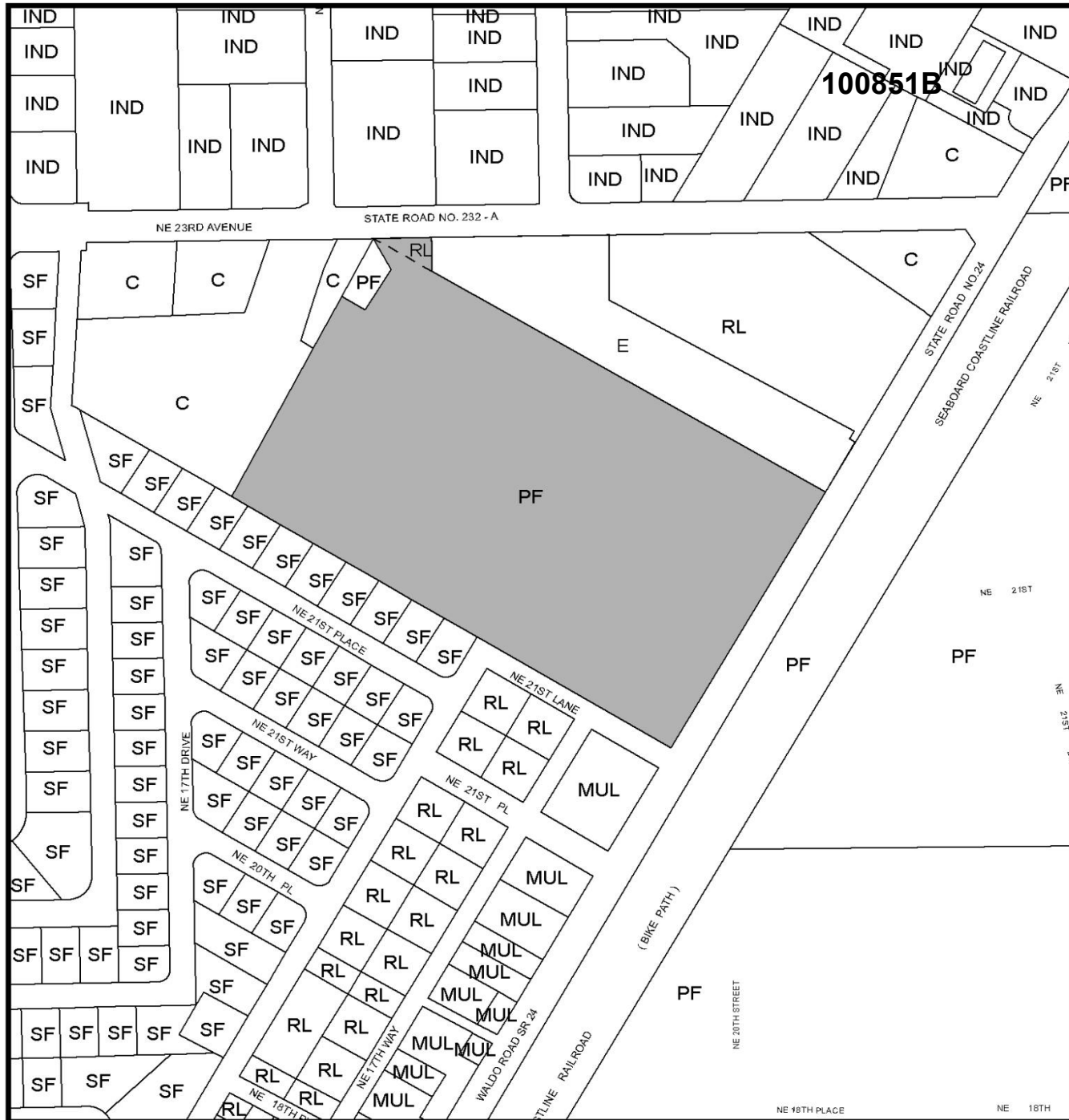
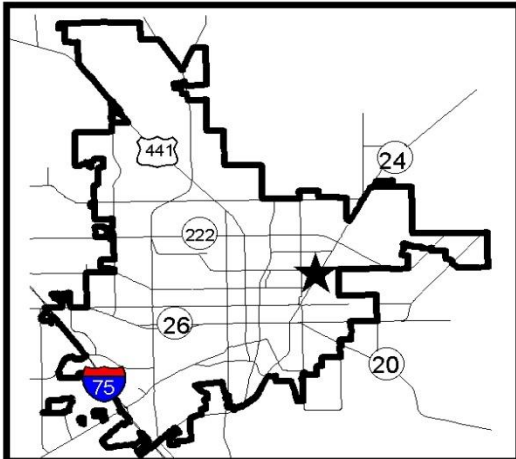


Area under petition consideration

Existing Land Use - PF, RL
Proposed Land Use - E

Land Use Categories

- SF - Single Family
(up to 8 units per acre)
- RL - Residential Low Density
(up to 12 units per acre)
- MUL - Mixed Use Low Density
(10-30 units per acre)
- C - Commercial
- IND - Industrial
- E - Education
- PF - Public Facilities

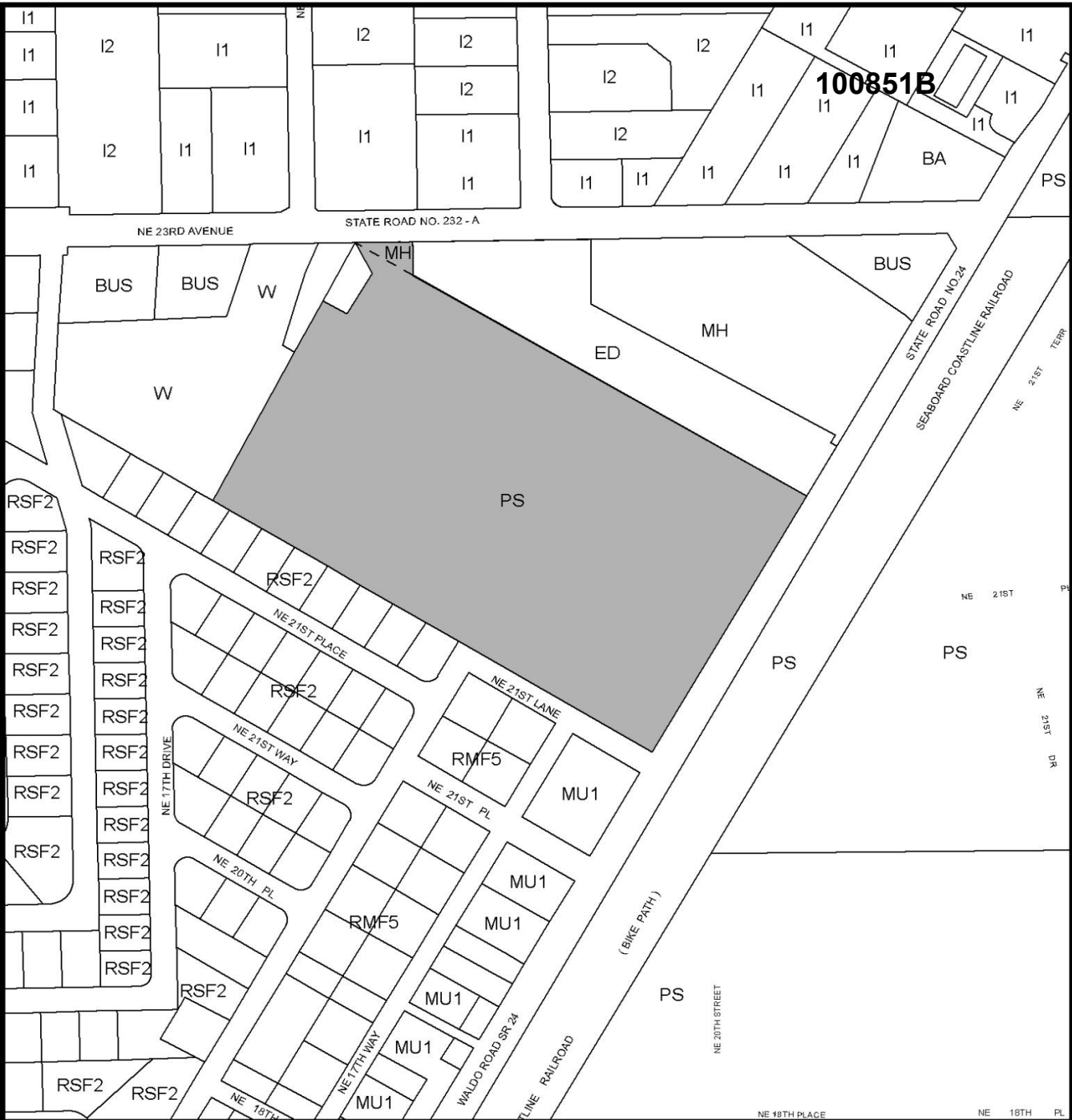
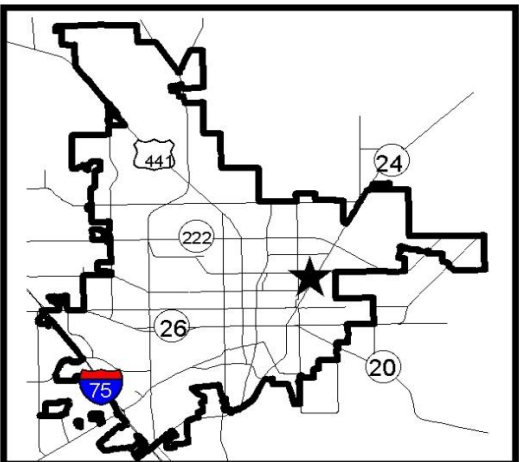


Area under petition consideration

Existing Zoning - PS, MH
Proposed Zoning - ED

Zoning Categories

- RSF2 - Single Family Residential (4.6 units per acre)
- RMF5 - Residential Low Density (12 units per acre)
- MH - Mobile Home Residential (12 units per acre)
- BA - Automotive Oriented Business
- BUS - General Business
- MU1 - Mixed Use Low Intensity (10-30 units per acre)
- I1 - Limited Industrial
- I2 - General Industrial
- W - Warehousing and Wholesaling
- ED - Educational Services
- PS - Public Services and Operations



Petition / Background^{100851B}

- **Proposed zoning appropriate for cont'd use as UF Eastside Campus**
- **RL land use and MH zoning on .09-ac portion do not allow institutions of higher learning (and current PF land use on remainder does not specify institutions of higher learning as an allowable use)**
- **Property served by urban services, RTS, adjoins major roadways, no major environmental impacts or constraints**

Key Issues

100851B

- **ED zoning consistent w/related ED land use, Comp. Plan, Plan East Gainesville, and w/cont'd devel't of UF Eastside Campus**
- **Compatibility ensured by meeting applicable req'ts of Campus Master Plan and Campus Development Agreement**

City Plan Board to City Commission:

Approve Petition PB-11-19 ZON and find it consistent w/the City's Comp. Plan and land development regulations

Plan Board voted 6:0

Staff to City Commission: Approve Petition PB-11-19 ZON

Staff to City Plan Board: Approve Petition PB-11-19 ZON