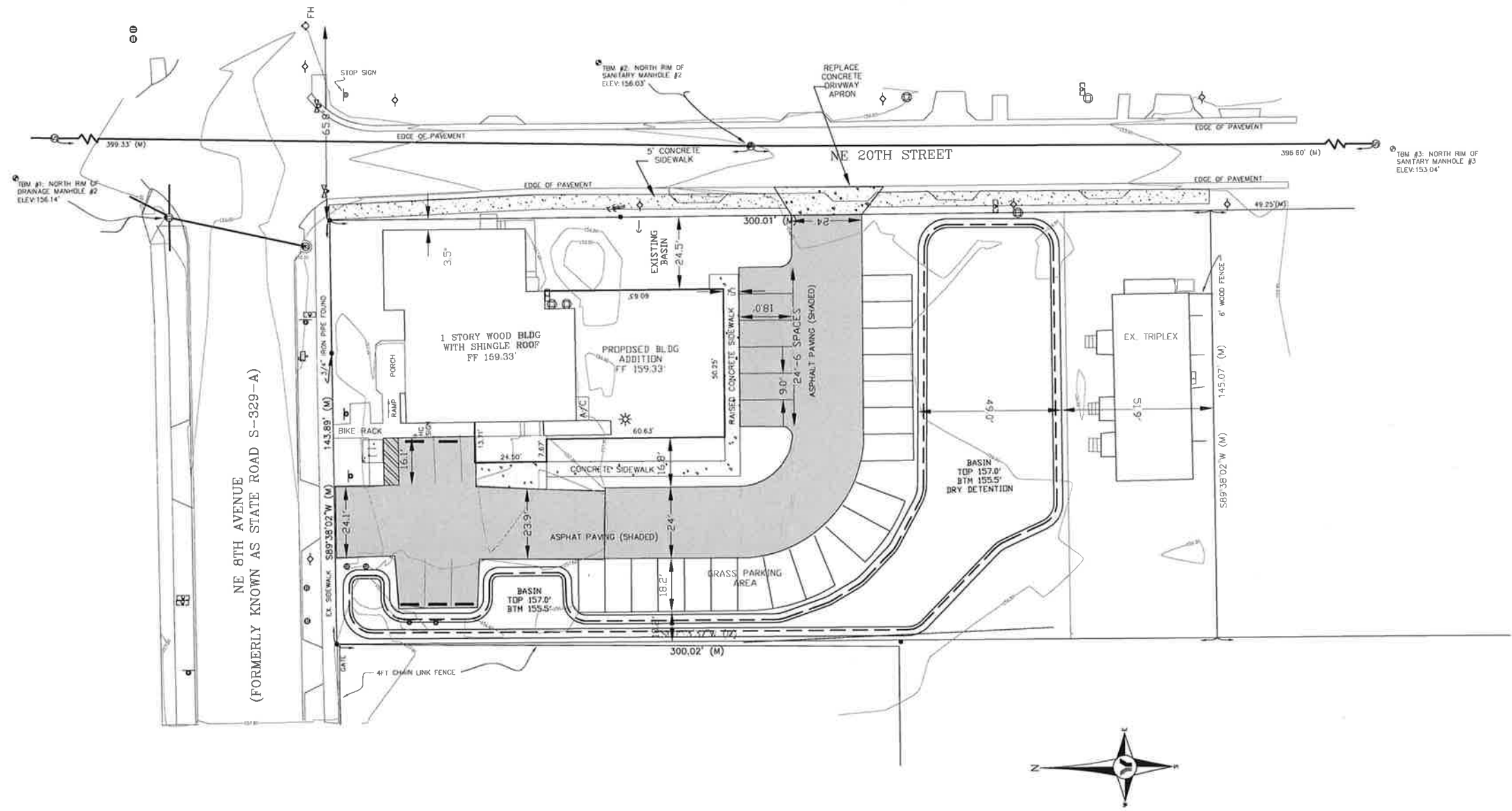


NOTE: WATER AND SEWER TO BE SERVED FROM EXISTING BUILDING



Rev No		Description		Initials		Date		FETNER ENGINEERING ENGINEERING, PLANNING & DESIGN 364 NORTH SR 21, HAWTHORNE, FLORIDA 32640 PHONE NO. (352) 481-4093 FAX. (352) 481-4821 (CA NO. 28081)				Project No: 05-14* Sheet No: 3		DAYS SPRINGS CHURCH ADDITION SITE PLAN		Date: 07/1/15 Scale: 1" = 20' Vari Scale: N/A		Approved By: Allson A. Fetner, P.E. No. 44669	
								Activity	Initials	Date									
								Designed By:	AAF	04/14									
								Drawn By:	AAF	04/14									
								Checked By:	TD	04/14									