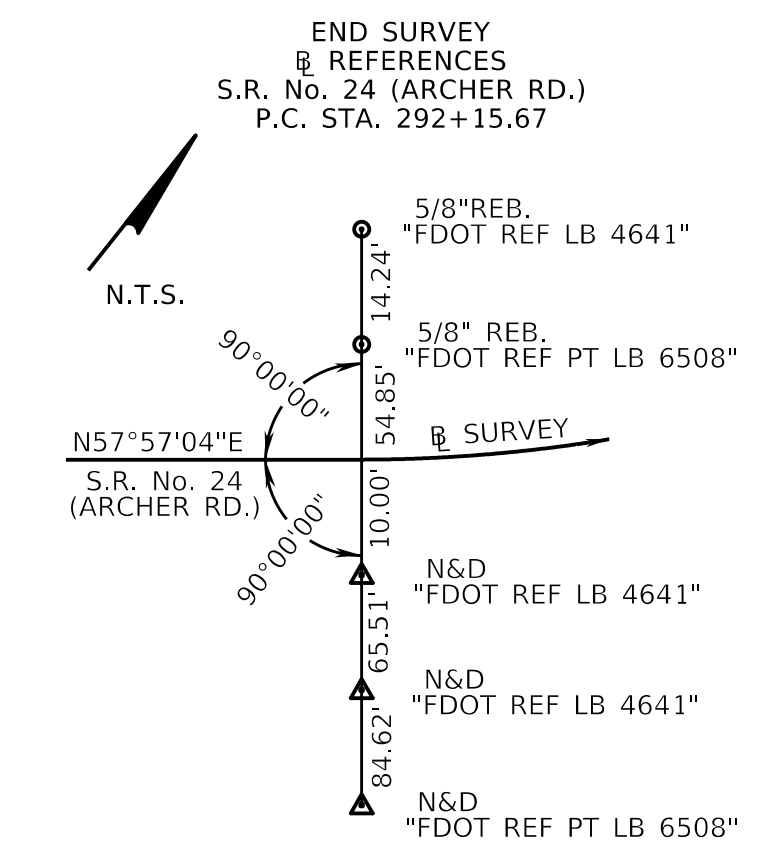
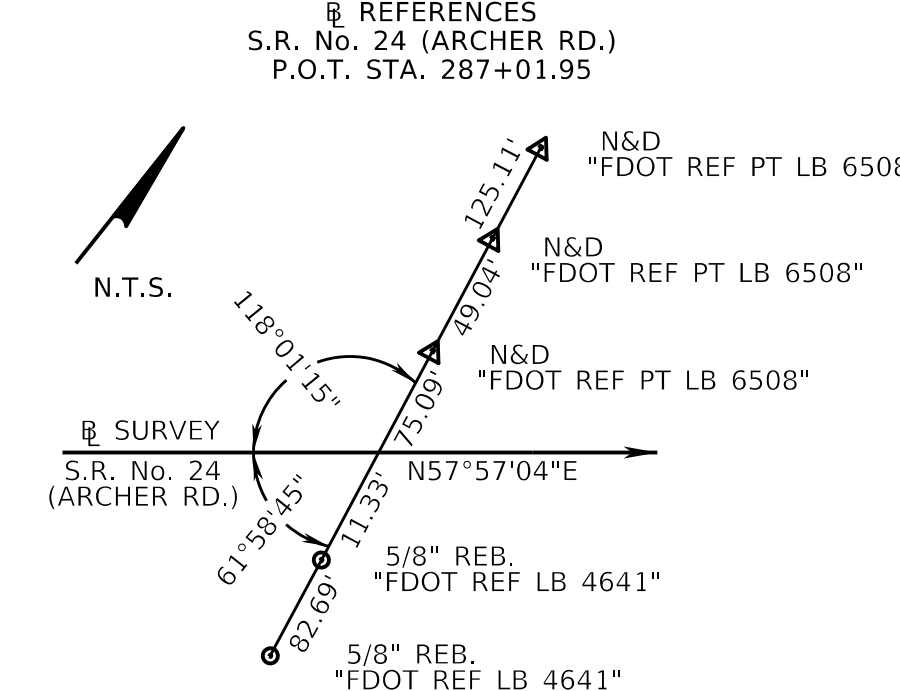
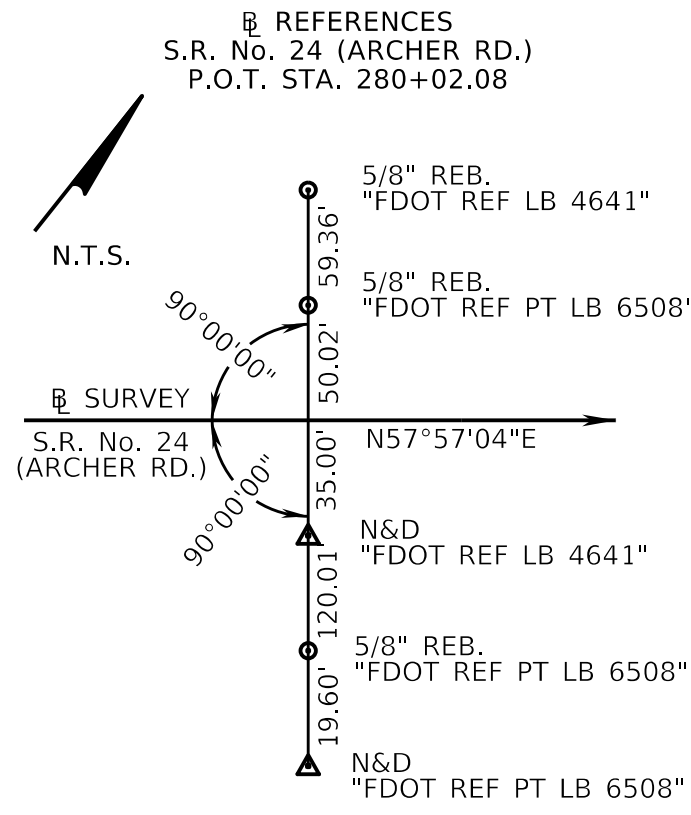
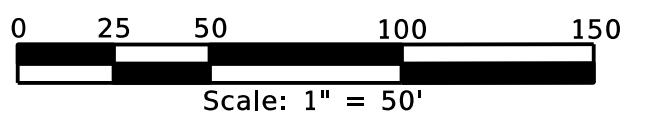


ARREDONDO GRANT, TOWNSHIP 10 SOUTH, RANGE 19 EAST  
ALACHUA COUNTY

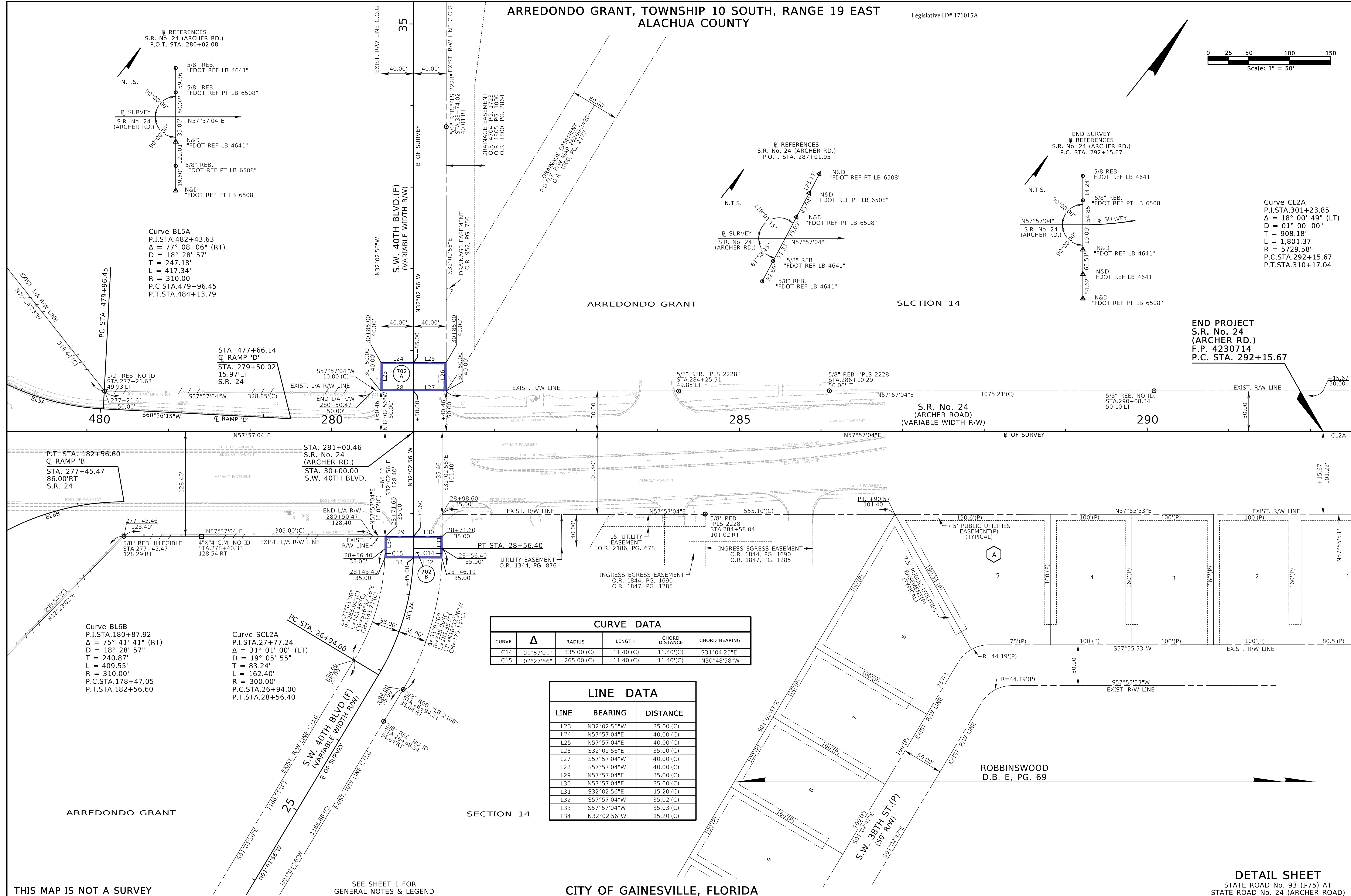
Legislative ID# 171015A



Curve BL5A  
P.I. STA. 482+43.63  
 $\Delta = 77^\circ 08' 06''$  (RT)  
 $D = 18^\circ 28' 57''$   
 $T = 247.18'$   
 $L = 417.34'$   
 $R = 310.00'$   
P.C. STA. 479+96.45  
P.T. STA. 484+13.79

Curve CL2A  
P.I. STA. 301+23.85  
 $\Delta = 18^\circ 00' 49''$  (LT)  
 $D = 01^\circ 00' 00''$   
 $T = 908.18'$   
 $L = 1,801.37'$   
 $R = 5,729.58'$   
P.C. STA. 292+15.67  
P.T. STA. 310+17.04

END PROJECT  
S.R. No. 24  
(ARCHER RD.)  
F.P. 4230714  
P.C. STA. 292+15.67



CURVE	$\Delta$	RADIUS	LENGTH	CHORD DISTANCE	CHORD BEARING
C14	01°57'01"	335.00'(C)	11.40'(C)	11.40'(C)	S31°04'25"E
C15	02°27'56"	265.00'(C)	11.40'(C)	11.40'(C)	N30°48'58"W

LINE	BEARING	DISTANCE
L23	N32°02'56"W	35.00'(C)
L24	N57°57'04"E	40.00'(C)
L25	N57°57'04"E	40.00'(C)
L26	S32°02'56"E	35.00'(C)
L27	S57°57'04"W	40.00'(C)
L28	S57°57'04"W	40.00'(C)
L29	N57°57'04"E	35.00'(C)
L30	N57°57'04"E	35.00'(C)
L31	S32°02'56"E	15.20'(C)
L32	S57°57'04"W	35.02'(C)
L33	S57°57'04"W	35.03'(C)
L34	N32°02'56"W	15.20'(C)

Curve BL6B  
P.I. STA. 180+87.92  
 $\Delta = 75^\circ 41' 41''$  (RT)  
 $D = 18^\circ 28' 57''$   
 $T = 240.87'$   
 $L = 409.55'$   
 $R = 310.00'$   
P.C. STA. 178+47.05  
P.T. STA. 182+56.60

Curve SCL2A  
P.I. STA. 27+77.24  
 $\Delta = 31^\circ 01' 00''$  (LT)  
 $D = 19^\circ 05' 55''$   
 $T = 83.24'$   
 $L = 162.40'$   
 $R = 300.00'$   
P.C. STA. 26+94.00  
P.T. STA. 28+56.40

THIS MAP IS NOT A SURVEY

SEE SHEET 1 FOR  
GENERAL NOTES & LEGEND

CITY OF GAINESVILLE, FLORIDA

DETAIL SHEET  
STATE ROAD No. 93 (I-75) AT  
STATE ROAD No. 24 (ARCHER ROAD)

RIGHT OF WAY MAP	FLORIDA DEPARTMENT OF TRANSPORTATION SURVEYING AND MAPPING	APPROVED BY _____ DATE _____	BY _____ DATE _____	F.A.P. No. N/A	SECTION 26260 S.R. No. 93 (I-75) SECTION 26090 S.R. No. 24	MAPS PREPARED BY: CLARY & ASSOCIATES, INC. L.B. No. 3731 3830 CROWN POINT ROAD JACKSONVILLE, FL 32257	DATA SOURCE: E.F.B. No. 2626017
		FOR DISTRICT SECRETARY _____	ADD PAR 702A,702B; SHT. 4 JLS 01-18-18				CHECKED _____ DATE _____
			REVISION _____ BY _____ DATE _____	STATE ROAD No. 93 (I-75) & STATE ROAD No. 24	ALACHUA COUNTY	F.P. NO. 4230714	SHEET 4 OF 6