

LEGISLATIVE

110753



Recreation, Cultural Affairs & Public Works Committee

Stormwater District in the Urban Village

Stormwater Basin Credits

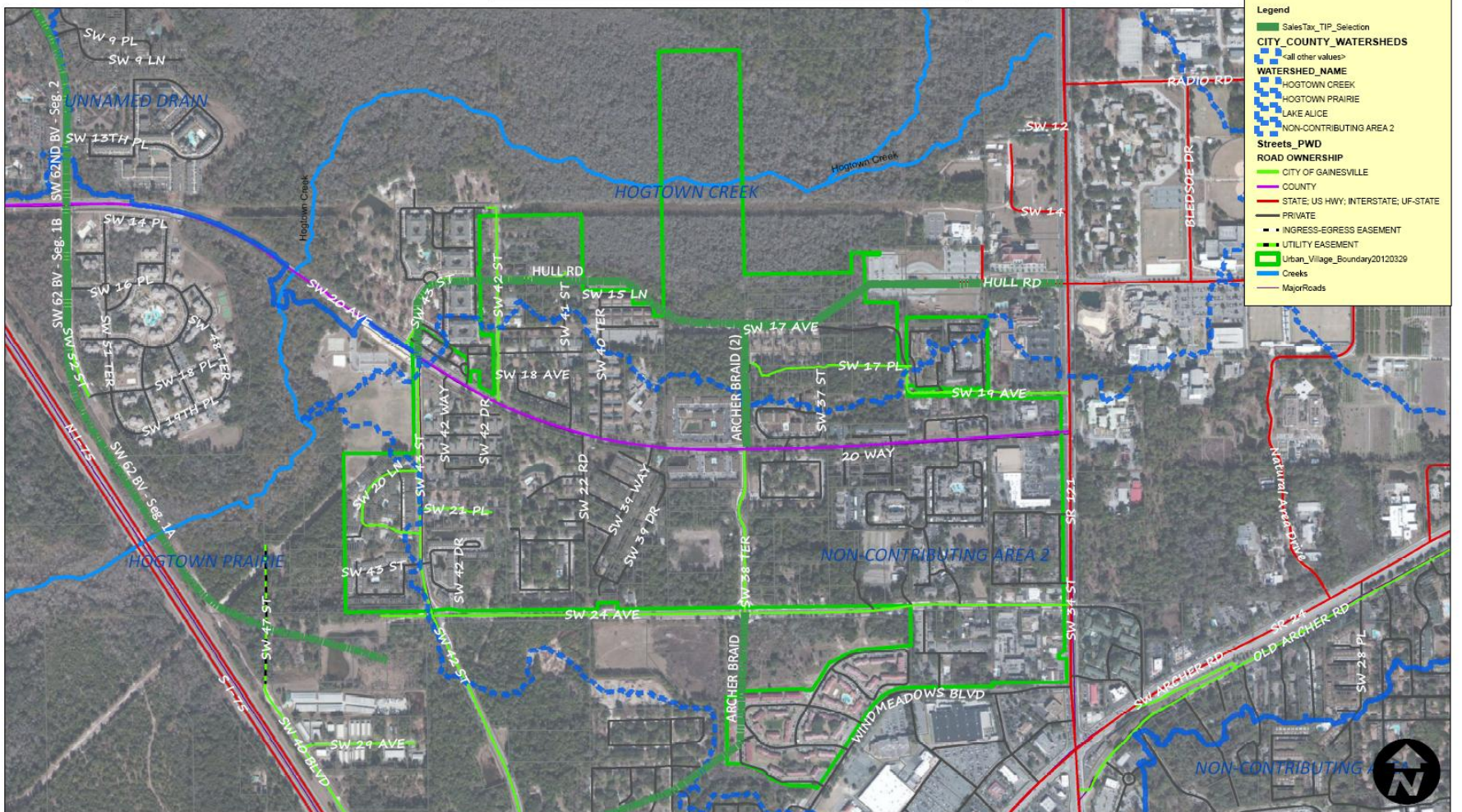
- Used since early 2000's to incentivize and encourage redevelopment
 - Spring Hill Stormwater Park
 - Utilized City Owned Property – Union Street Station & Commerce Center
 - SW 5 Avenue Basin
 - SMU Acquire Property - Lofts, Courthouse, SW Parking Garage
 - Duval Stormwater Park
 - SMU acquired property -
 - Depot Stormwater Park

Stormwater Basin Credits

- Redevelopments purchase credits based on contributions of various water quality treatment constituents
 - Total Suspended Solids
 - Total Nitrogen
 - Total Phosphorous
- Redevelopments have to control rate of discharge based on pre/post conditions

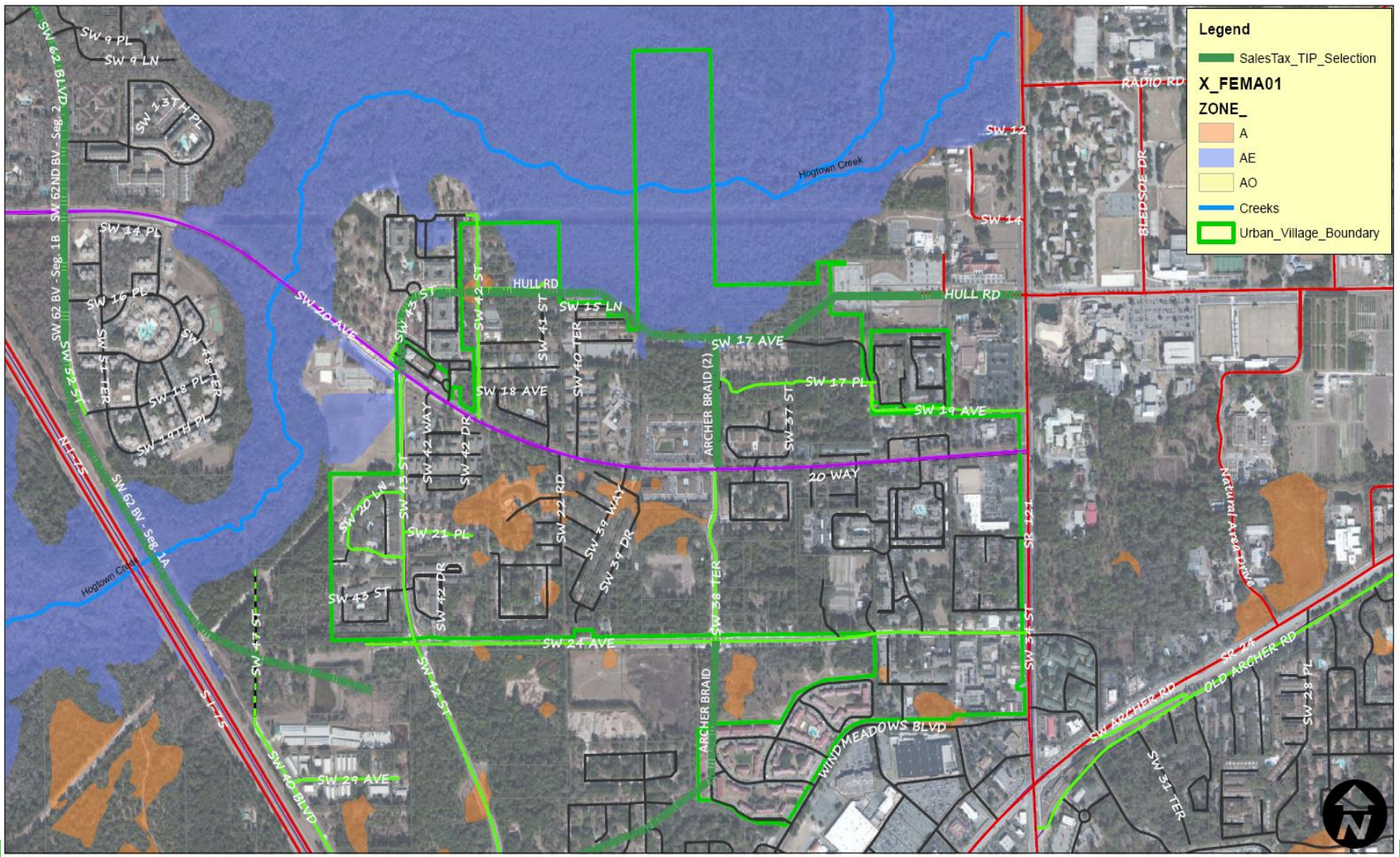
Urban Village

Attachment 1 - Project Location and Watersheds

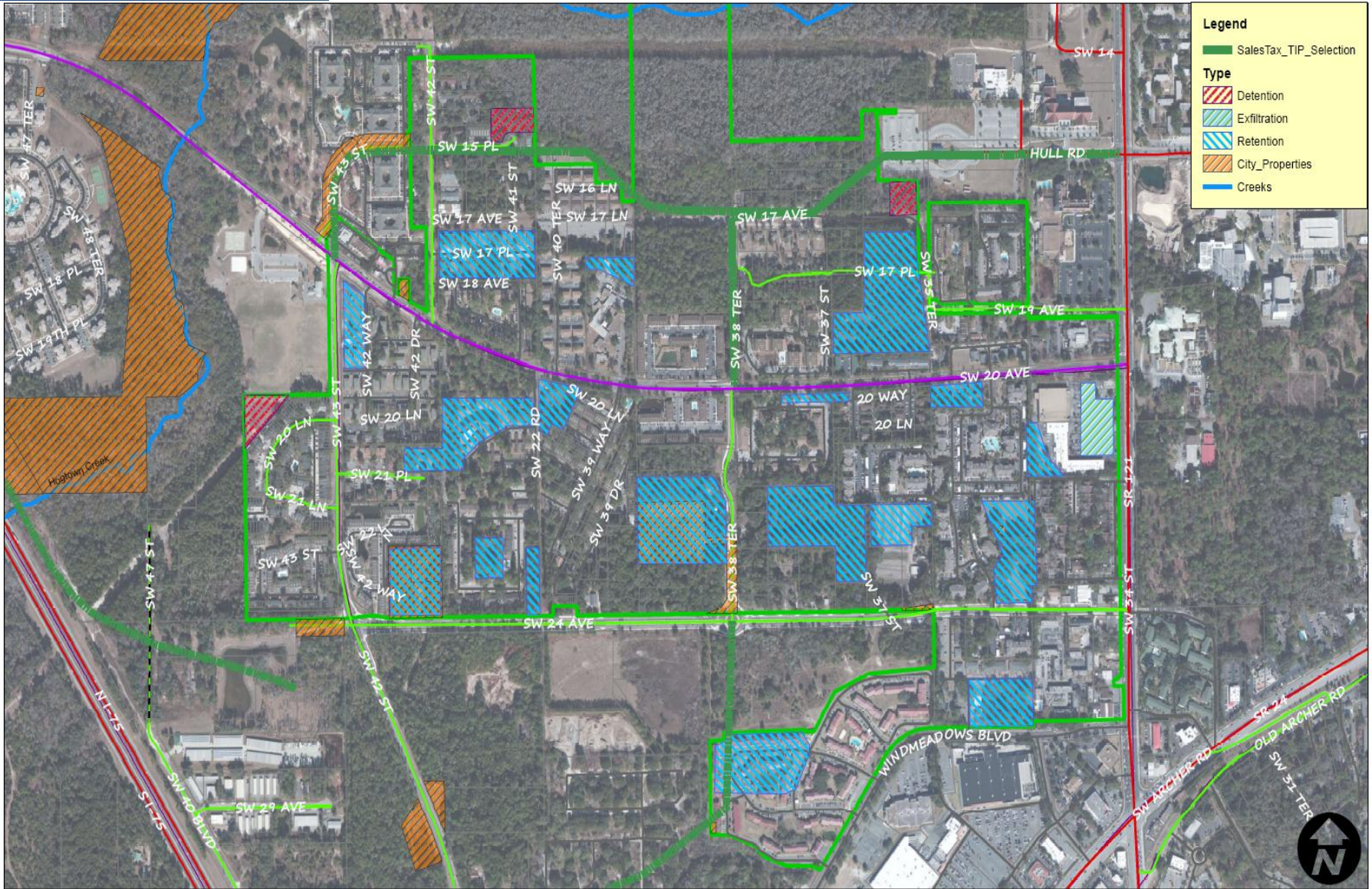


Flooding – Volume Controls

Attachment 2 - Floodzones



Potential Sites



Way Forward

- Establish Goals
 - Redevelopment versus Green Field Development
 - Flood Control versus Water Quality Treatment
 - Funding Options

DISCUSSION