

Proposed Walmart

City of Gainesville, FL



Walmart  **MASTER DEVELOPMENT PLAN**



cph

Planning
 Architecture
 Landscape Architecture
 Environmental Science
 Community Development
 Energy Services

580 West Park Street
 Norfolk, VA 23510
 P.O. Box 2000
 817.753.5000
 Phone: 800.222.6666
 Fax: 817.753.6000

March, 2010
 010001



Walmart  **MASTER DEVELOPMENT PLAN**

cph

APR 2008

580 West Dublin Road
Westerville, OH 43081
P.O. Box 2890
43081-2890
Phone: 614.885.2400
Fax: 614.885.2400



Walmart  **MASTER DEVELOPMENT PLAN**

cph

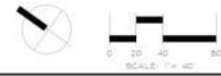
019801

APRIL 2008

Project: Walmart
 Location: [Redacted]
 Date: 04/08/08
 Scale: 1" = 60'
 Author: [Redacted]
 Designer: [Redacted]
 Checker: [Redacted]
 Approver: [Redacted]



Walmart  **BUILDING DETAIL PLAN**



March, 2010

019401

019401









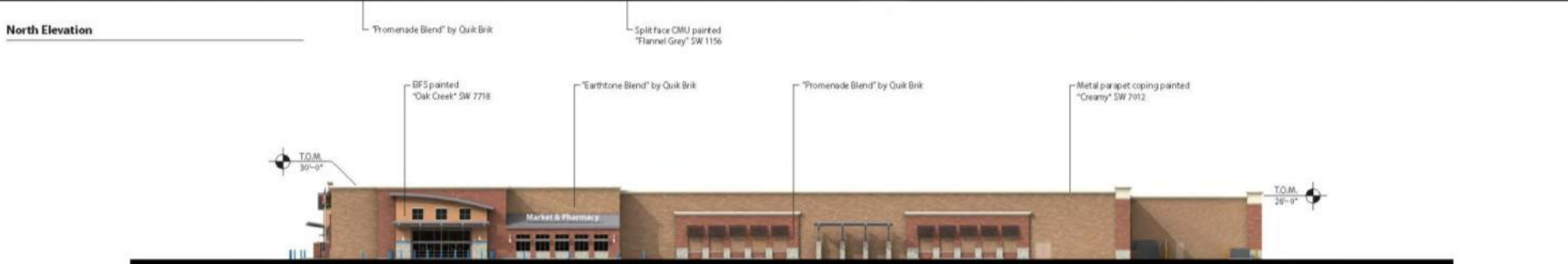






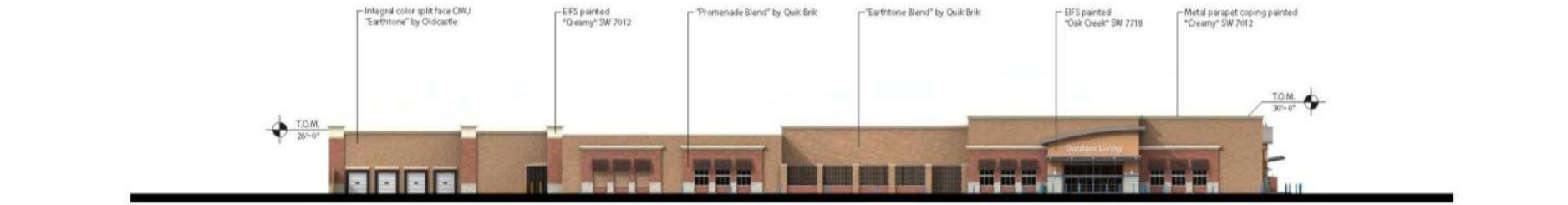
- Split face CMU painted "Flannel Grey" SW 1156
- Integral color split face CMU "Earthtone" by Oldcastle
- "Earthtone Blend" by Quik Brik
- EFS painted "Oak Creek" SW 7718
- Trespa Meteon "Dark Brown"
- Trespa Meteon "Center"
- Metal awning painted "Tricom Black" SW 6258
- Metal parapet coping painted "Creamy" SW 7012
- "Earthtone Blend" by Quik Brik

North Elevation



- "Promenade Blend" by Quik Brik
- Split face CMU painted "Flannel Grey" SW 1156
- EFS painted "Oak Creek" SW 7718
- "Earthtone Blend" by Quik Brik
- "Promenade Blend" by Quik Brik
- Metal parapet coping painted "Creamy" SW 7012

West Elevation



- Integral color split face CMU "Earthtone" by Oldcastle
- EFS painted "Creamy" SW 7012
- "Promenade Blend" by Quik Brik
- "Earthtone Blend" by Quik Brik
- EFS painted "Oak Creek" SW 7718
- Metal parapet coping painted "Creamy" SW 7012

East Elevation