



GFR  
STAFFING  
REPORT  
October 2005

---

# Introduction



## □ History

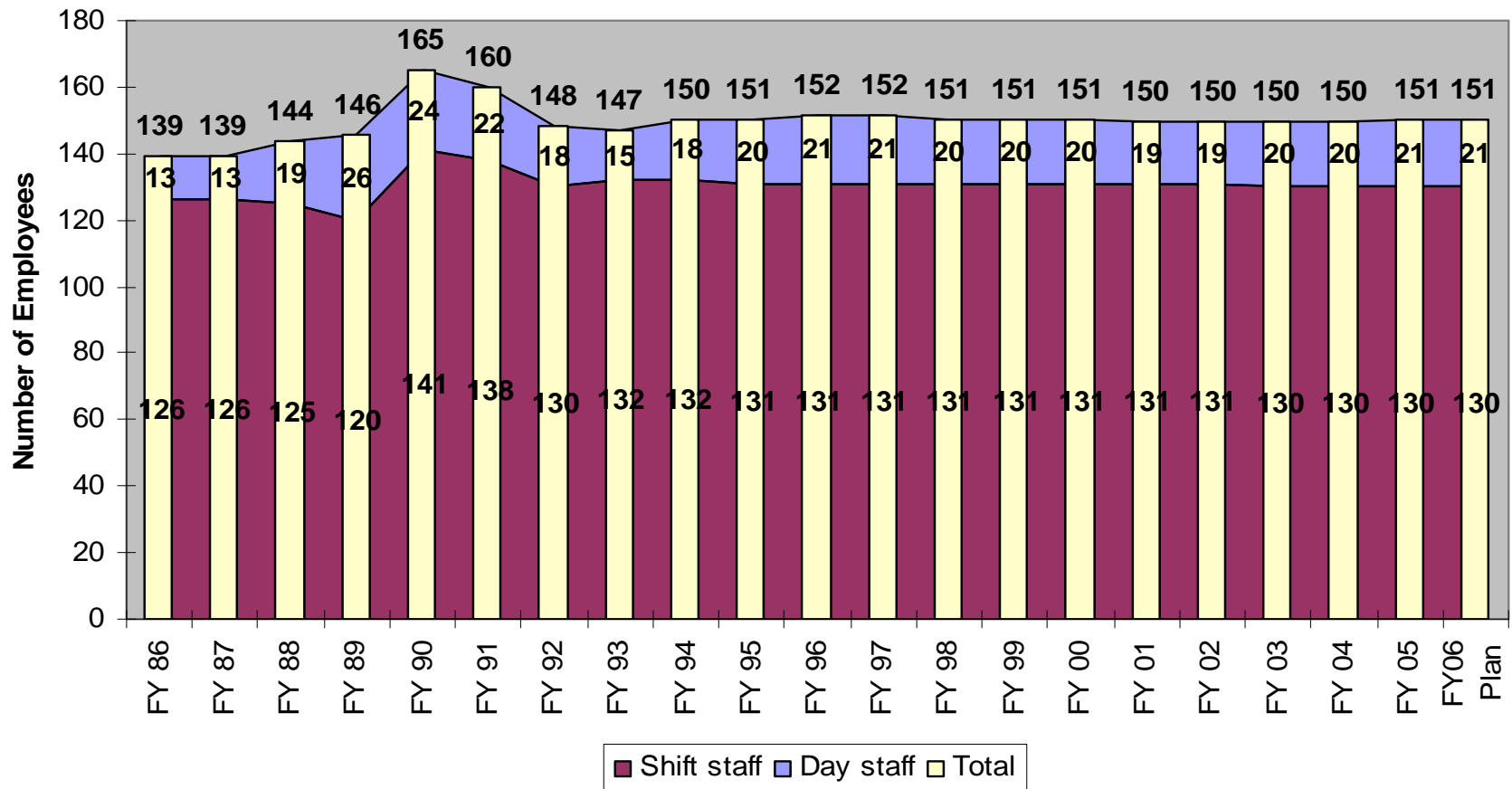
- Staffing
- Overtime
- Leave
- Revenue

# Research & Studies

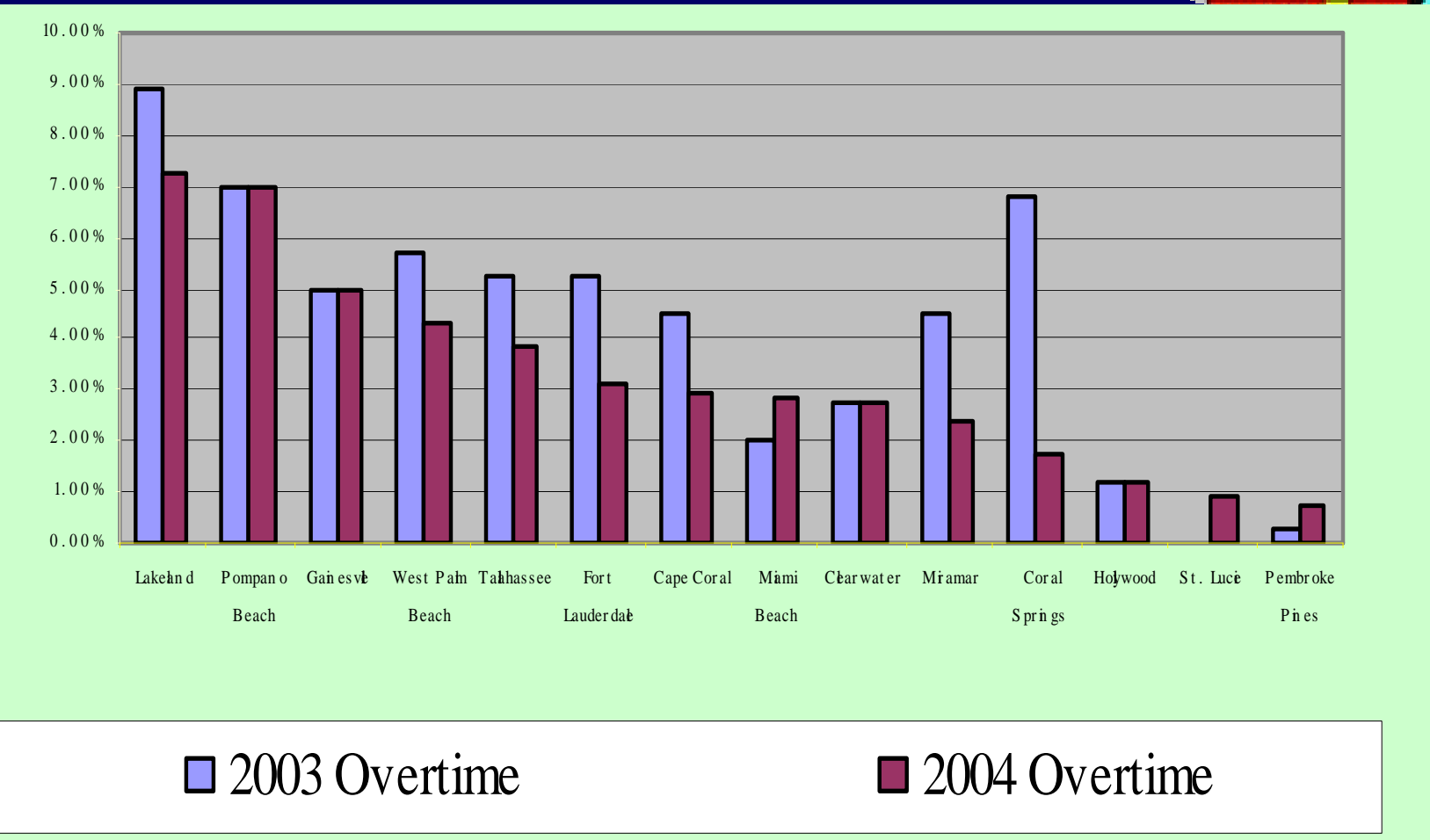


- Peer City Reviews: 2002, 2003 and 2004
- ISO Reports from 1994 and 2004
- 2003 Alachua County Fire and EMS Services Consultant Report
- IAFF 2004 GIS Fire Suppression Capability Analysis
- Standards
  - NFPA Standard 1710 Recommended
  - Florida Statutes mandatory “Two-in/two-out”
  - Maxwell’s Staffing Chart

# Staffing



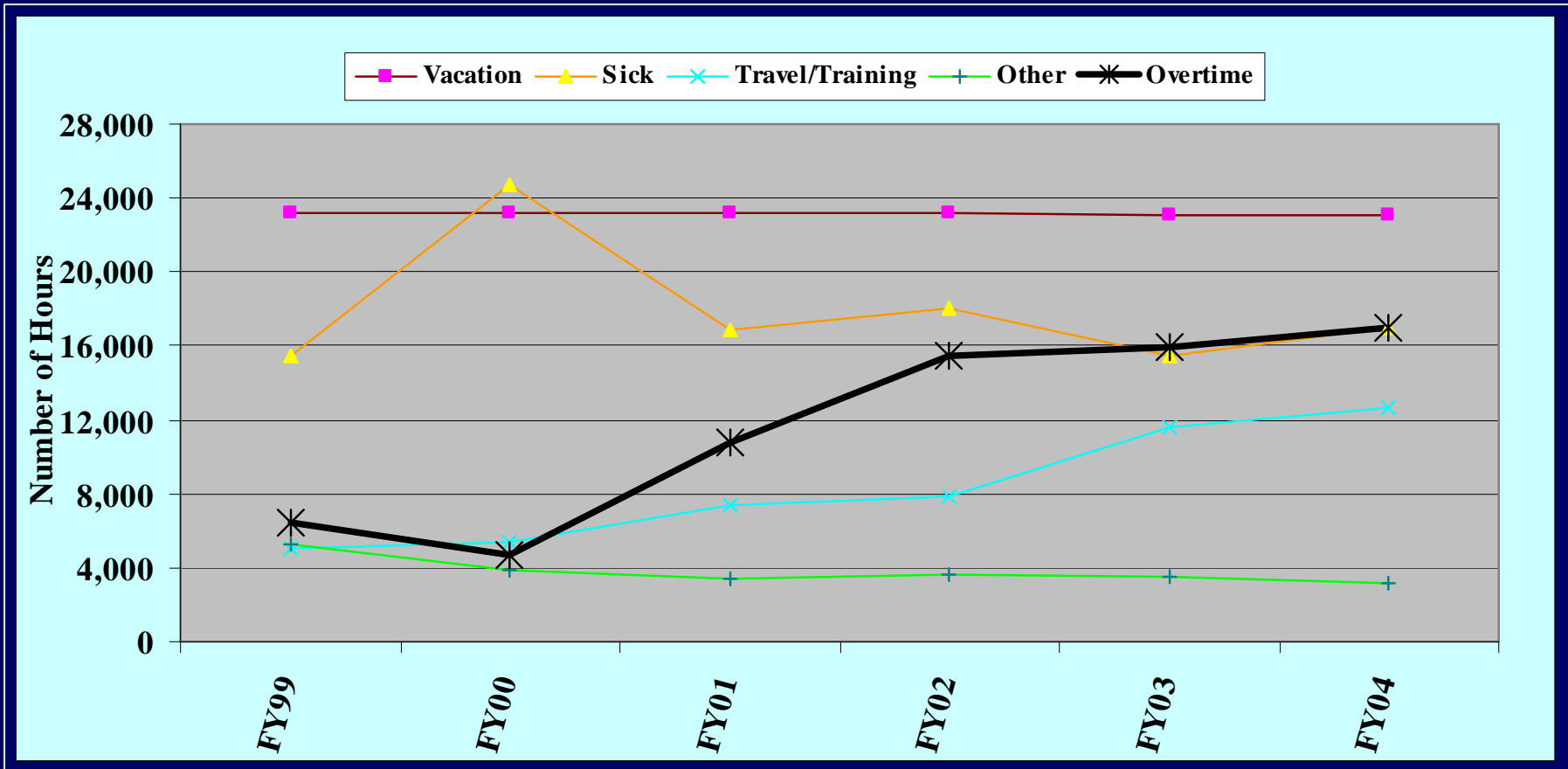
# Overtime



2003 Overtime

2004 Overtime

# Leave Usage



\* In 2002/2003, 25 employees in the DROP program resigned and used all available sick leave.

\*\* In FY 01, travel/training increased steadily with emphasis of homeland security. In FY 03 increase due to the addition of 25 new employees.

# Revenue



## DAA vs. Fair Share

- Fair share funding formula would have netted the city \$340K more than received in 2004 under the DAA

## Airport

- \$190k short of cost in 2004

# Insurance Services Office

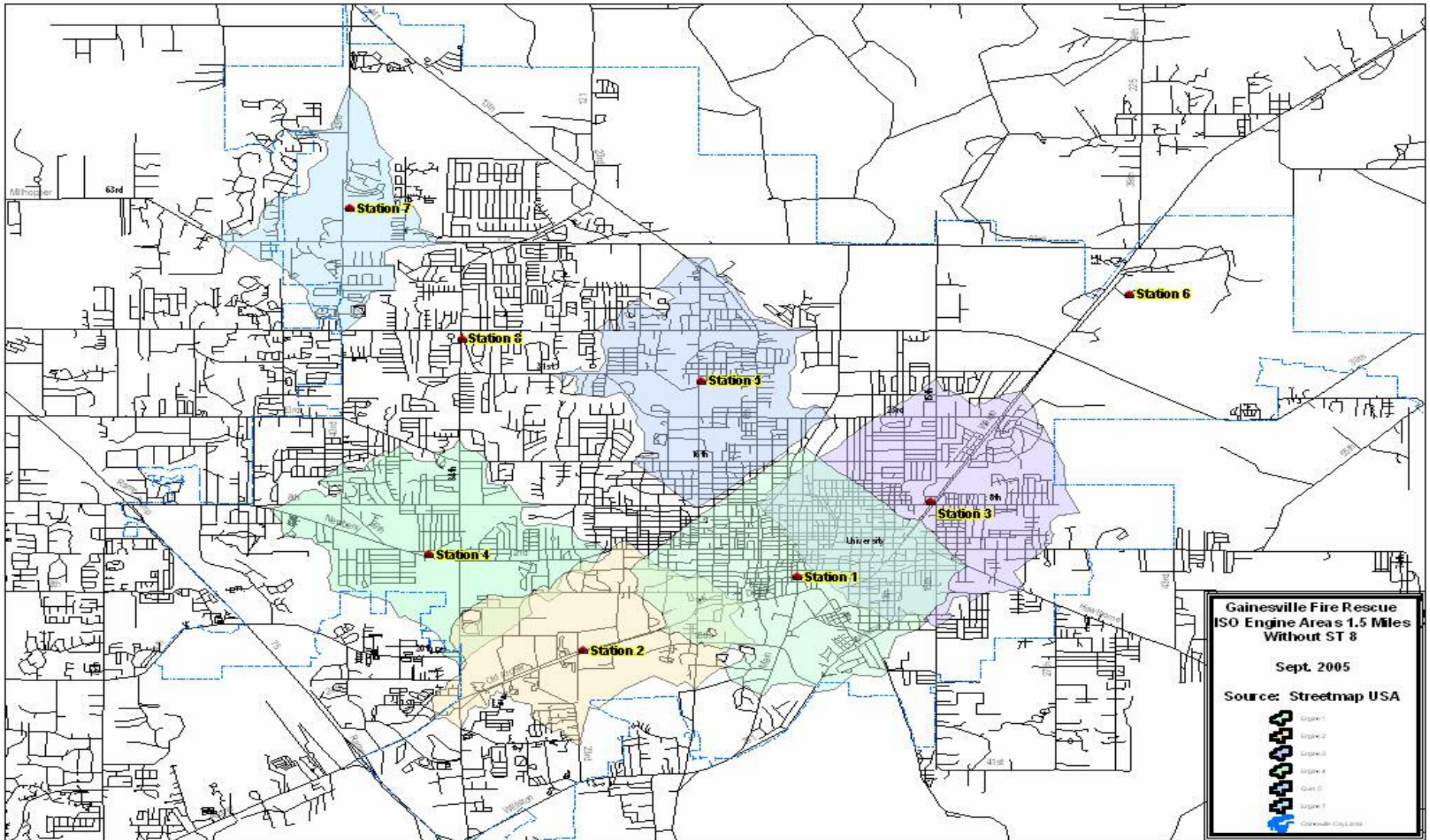


## EVALUATION & IMPROVEMENTS NEEDED:

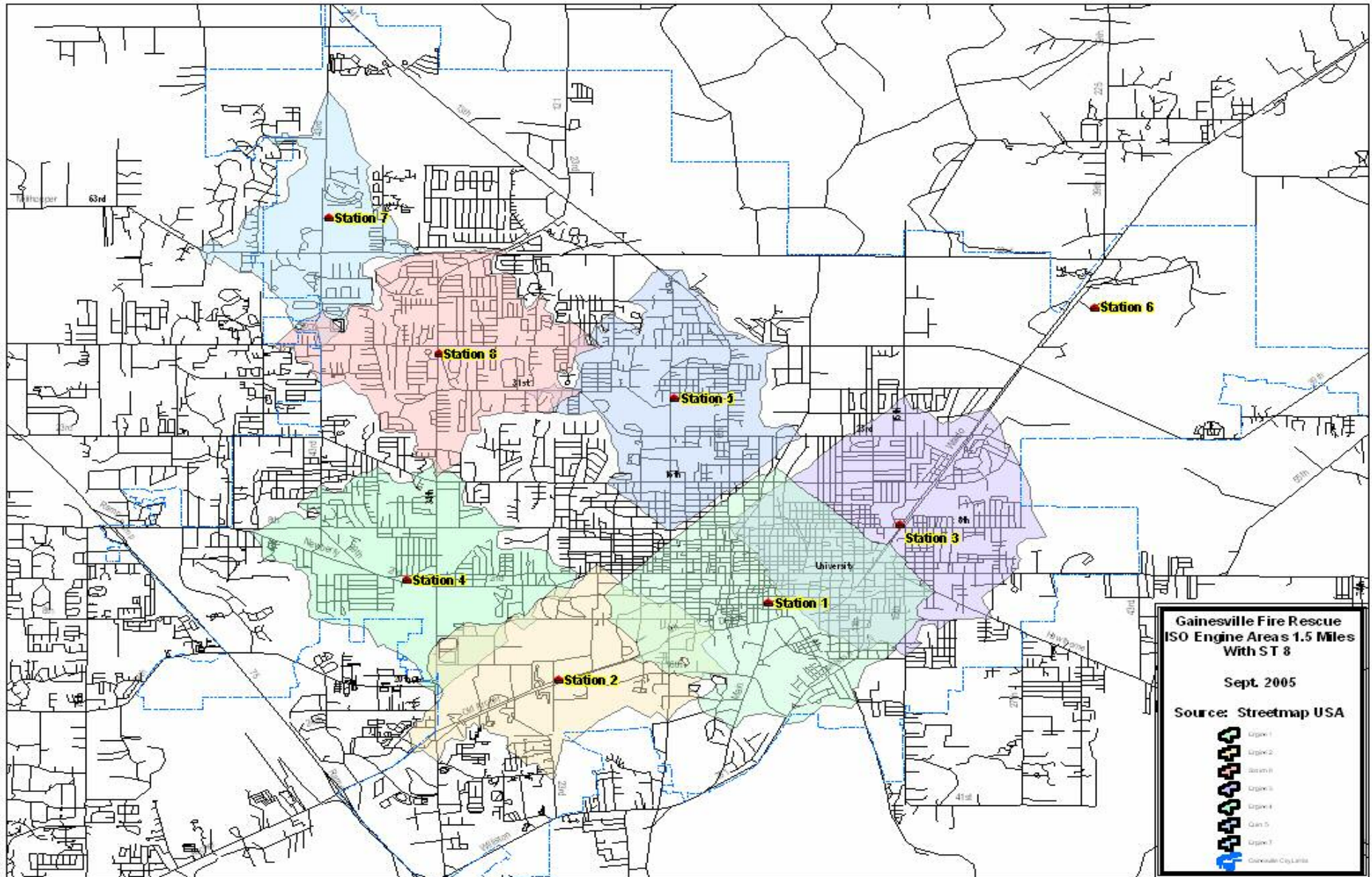
Needs in:	1994	2004
Engine Companies	8.77 need 2	6.53 need 3
Dispatch Circuits	3.25 points	1.25 points



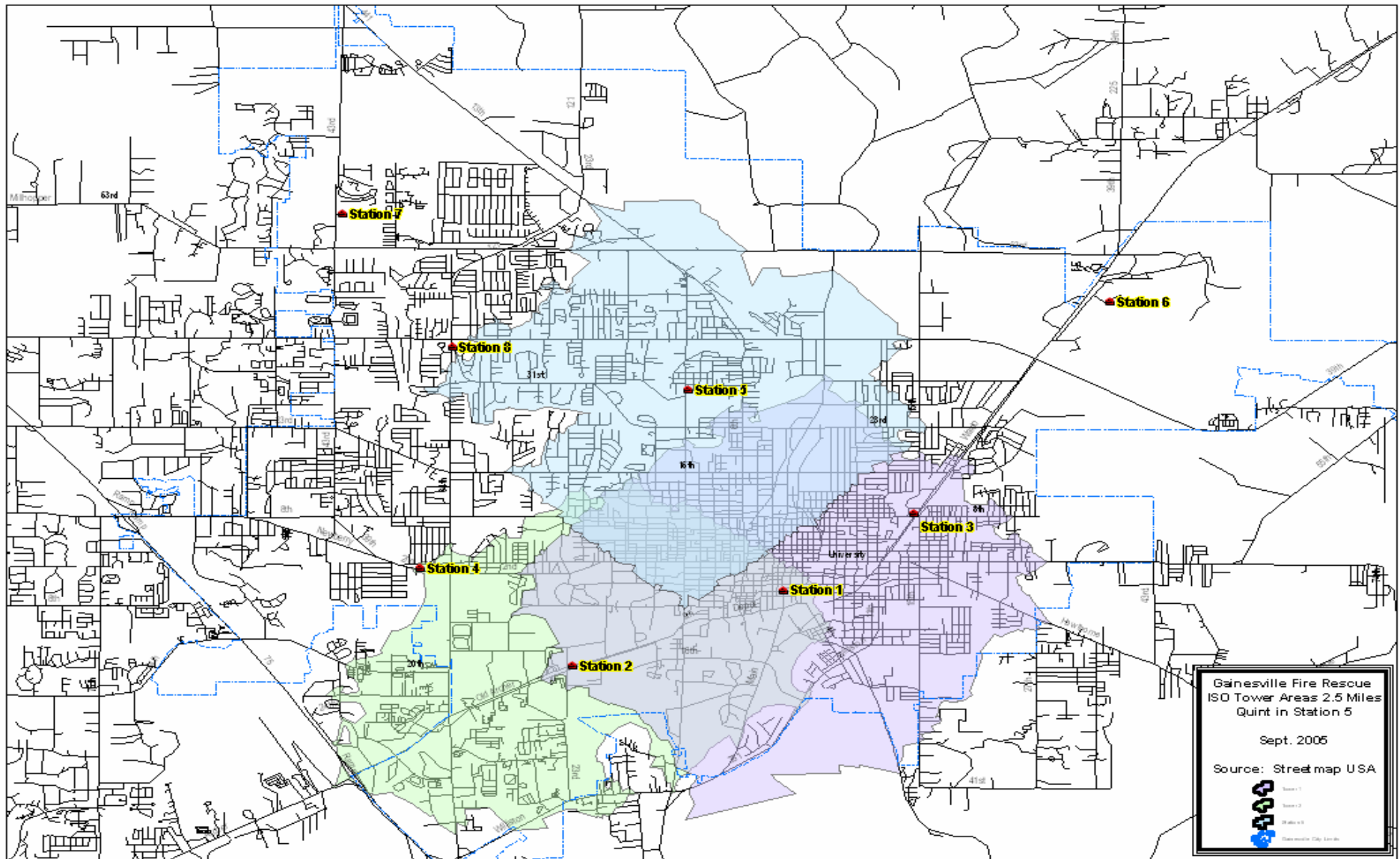
# ISO ENGINE COMPANIES w/o Station 8 - 1.5 road miles



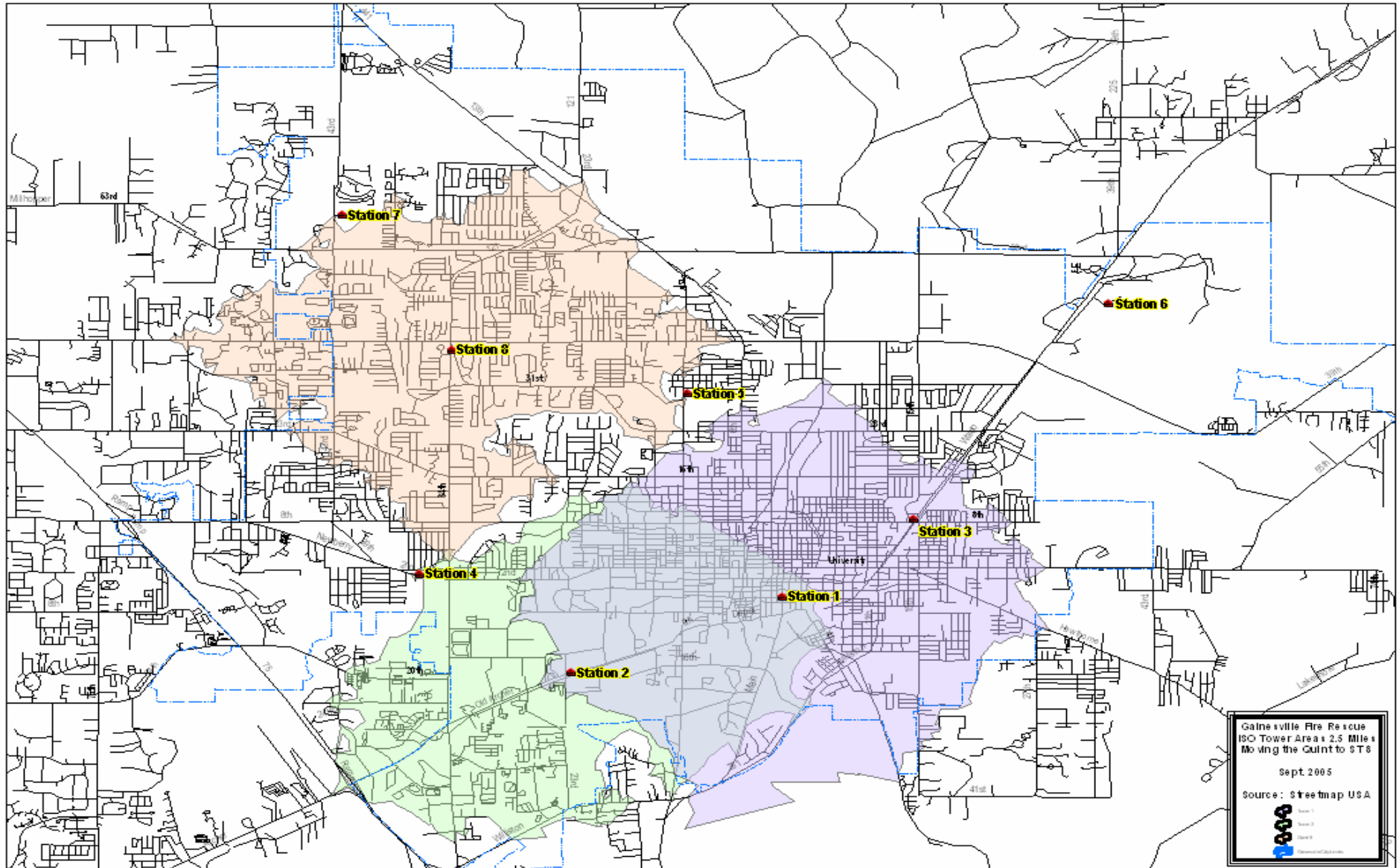
# ISO ENGINE COMPANIES w/Station 8 – 1.5 road miles



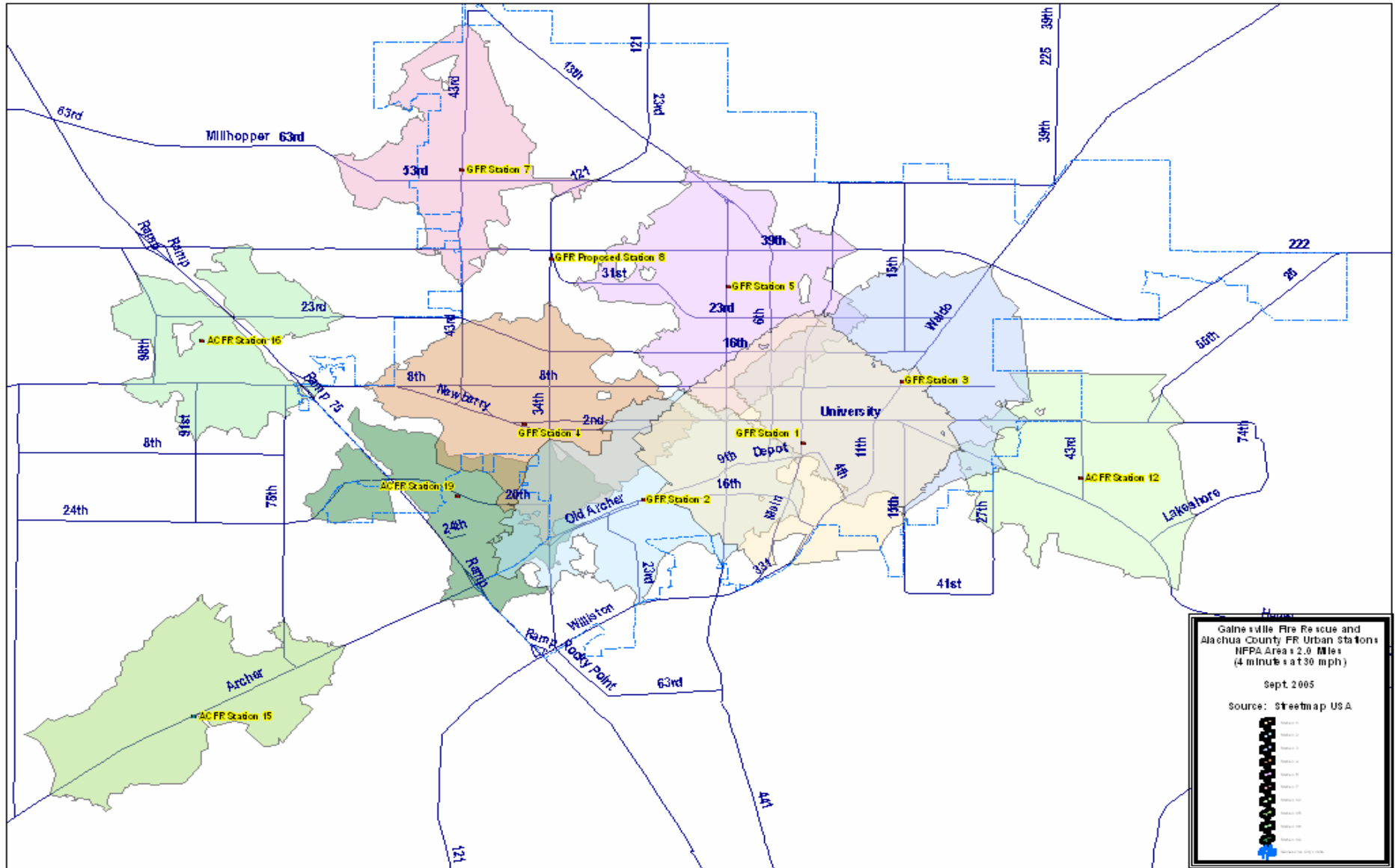
# ISO TRUCK COMPANIES w/o Station 8 – 2.5 road miles



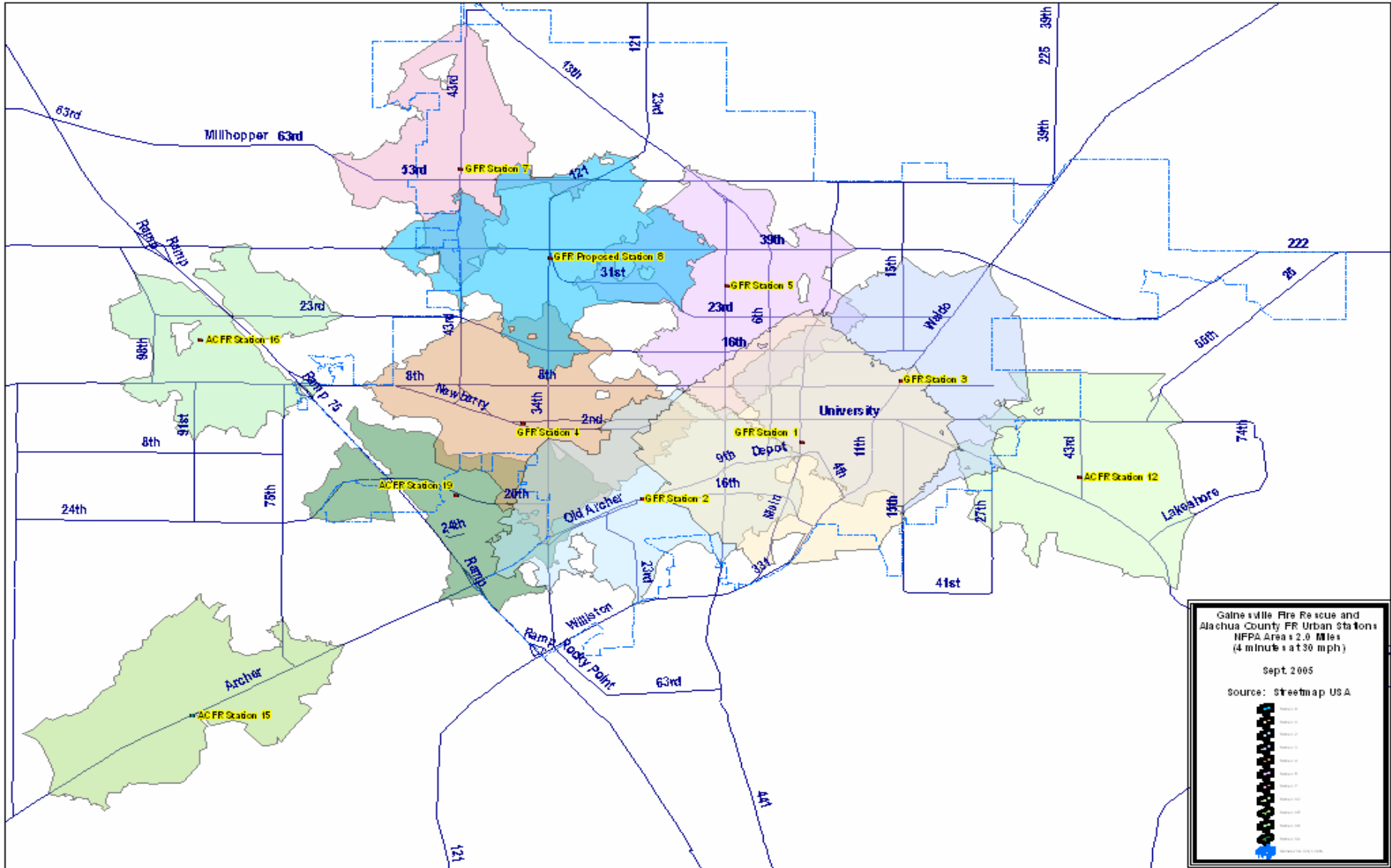
# ISO TRUCK COMPANIES w/Station 8 – 2.5 road miles



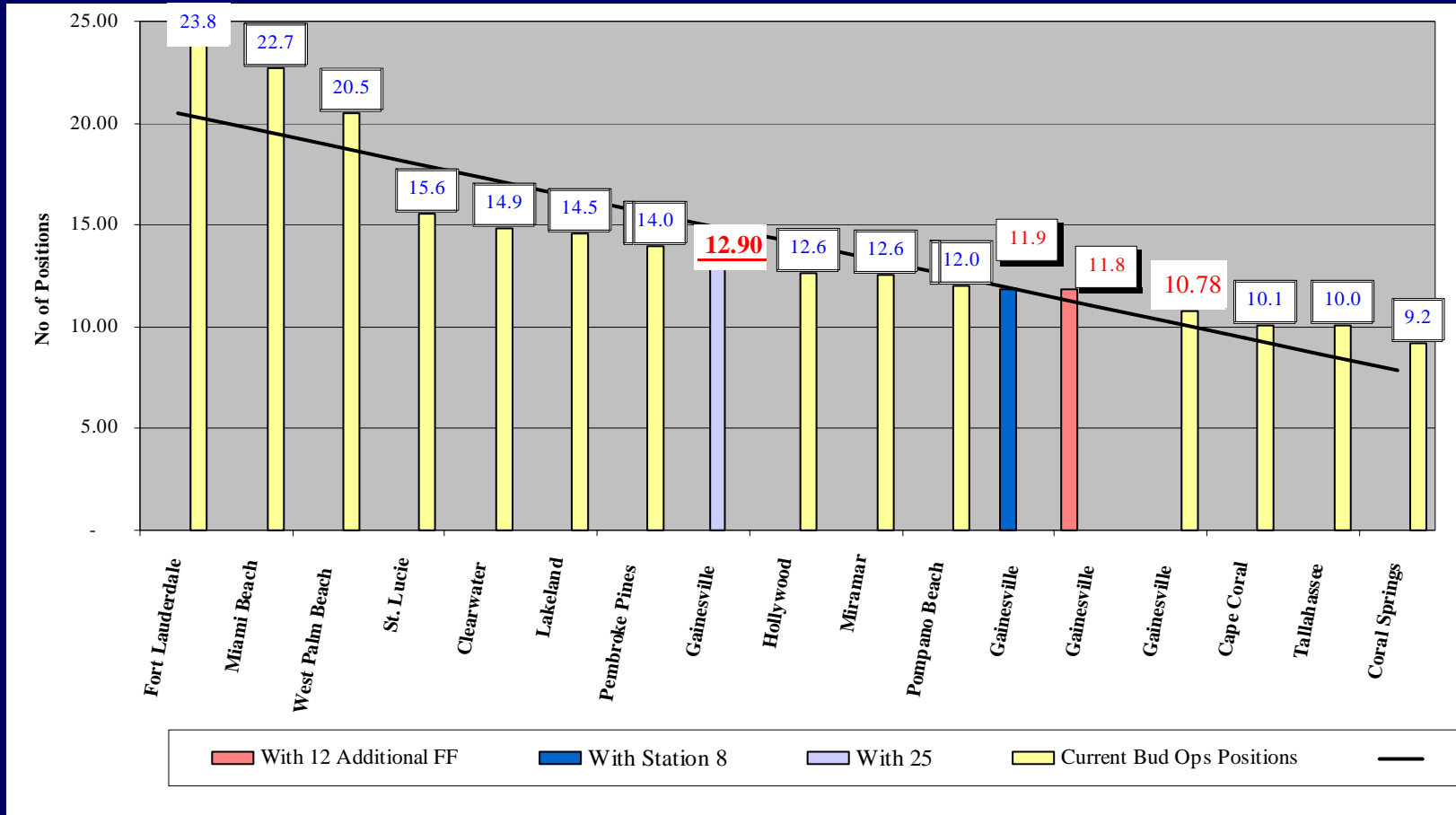
# NFPA - without Station 8 – 2 road miles



# NFPA with Station 8 – 2.0 road miles



# Peer City Comparison after Adding Firefighters



# Summary & Recommendations



- ❑ authorize the City Manager to fund the station paging through the bond issuance;
- ❑ direct the City Manager to : a) conduct an analysis of fire and rescue overtime and minimum staffing levels to determine the necessary level of funding for FY 07-08, and b) analyze the feasibility of adding a fire station in northwest Gainesville;
- ❑ the Public Safety Committee continue to review service delivery levels to report back to the City Commission as appropriate.







THANK YOU!