

110579

Gainesville Community  
Redevelopment Agency



# **DEPOT PARK AND CADE MUSEUM UPDATE DECEMBER 19, 2011**

# Background

---

- Depot Park is envisioned as a contemporary public greenspace serving as the City's "Central Park"
- Facilities proposed include the rehabilitated depot building, bike paths, children's play areas and other recreation elements
- Stormwater facilities will provide cost-effective management of downtown's urban runoff
- GRU remediated manufactured gas plant (MGP) impacts earlier this year
- PWD to perform non-MGP remediation



# Background

---

## Depot Park Aerial Rendering

Stormwater  
Pond

Cade Museum

Depot Bldg



# Accomplishments to Date

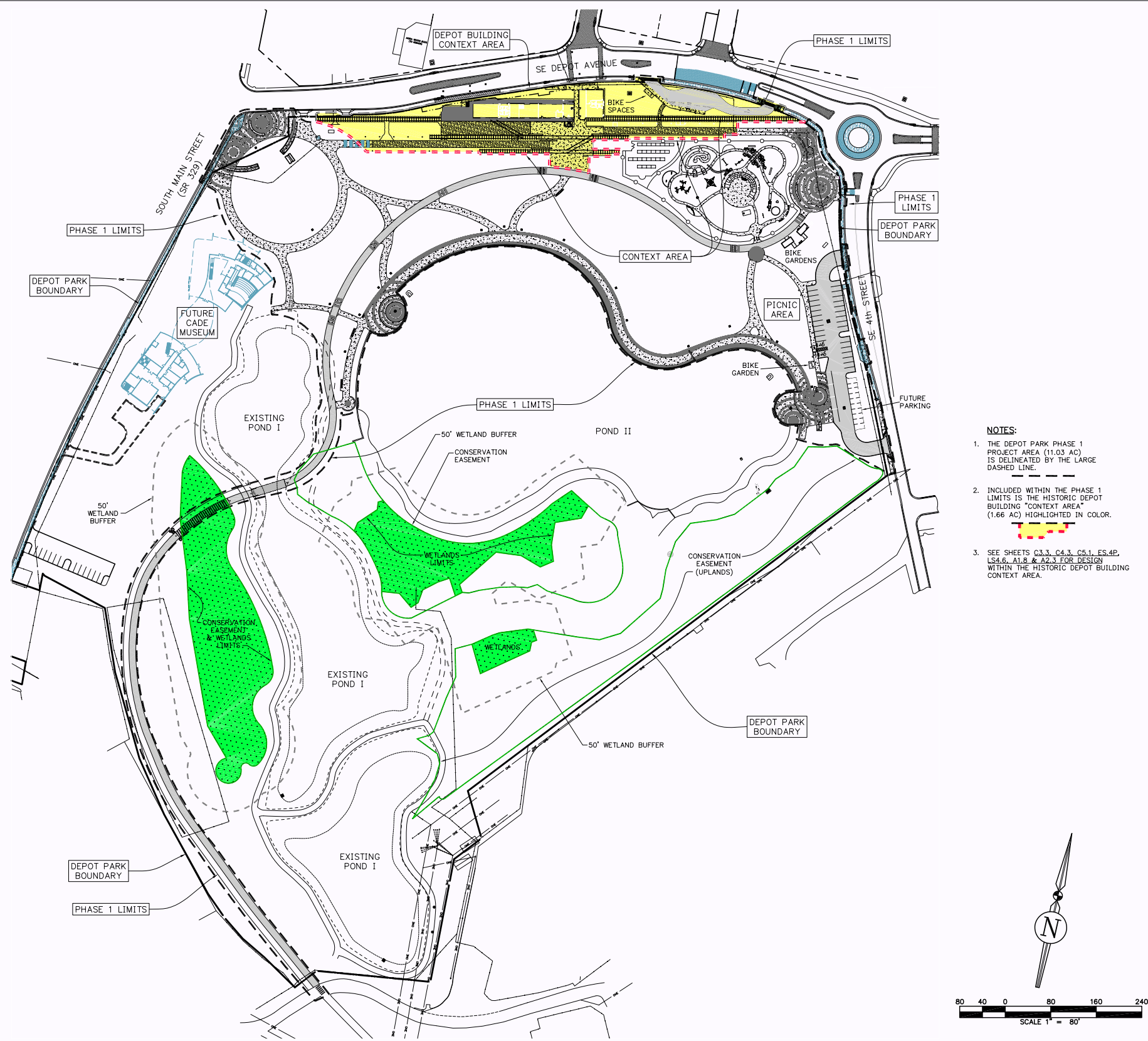
---

- Approved Depot Park Master Plan and Site Plan for Phase 1
  - DRB, Fall 2010
  - CRA Board
  - City Commission
  - State Historic Preservation Office
- Depot Building core and shell rehab is under construction
- Land use and zoning changed in 2010 from Industrial to Public Facilities





# Adopted Master Plan and Phase 1 Construction



- NOTES:**
1. THE DEPOT PARK PHASE 1 PROJECT AREA (11.03 AC) IS DELINEATED BY THE LARGE DASHED LINE.
  2. INCLUDED WITHIN THE PHASE 1 LIMITS IS THE HISTORIC DEPOT BUILDING "CONTEXT AREA" (1.66 AC) HIGHLIGHTED IN COLOR.
  3. SEE SHEETS C3.3, C4.3, C5.1, ES.4P, LS4.6, A1.8 & A2.3 FOR DESIGN WITHIN THE HISTORIC DEPOT BUILDING CONTEXT AREA.

**DEPOT PARK**

Gainesville, Florida  
for  
Gainesville Community  
Redevelopment Agency



Landscape Architect Consultant:

**JOLA**  
INCORPORATED  
Landscape Architects  
323 Turkey Creek, Alachua, Florida 32615-9355  
Ph: 352-377-3430; Web: jola-inc.com; FL LC 369

Civil Engineering Consultant:

**BROWN & CULLEN INC.**  
CIVIL ENGINEERS  
AND  
LAND PLANNERS  
3530 NW 43rd Street  
Gainesville, FL 32606-6104  
Phone: (352) 375-8999  
Fax: (352) 375-0833  
Email: bci@brown-cullen.com  
State of Florida Board of Professional  
Engineers Certificate of Auth. No. 8263  
BCI Project No.: 310-10-01

Daniel D. Sostrom, P.E. 68304  
Project Civil Engineer Fla. Reg. No.

Project Name: Depot Park  
Drawn By: RLW & TRH C'd By: DDS  
Submittal Date: 1/31/11

Rev.	Description	Date

**DEPOT PARK  
PHASE 1  
MASTER PLAN**

**C1.2**



# Depot Building Rehab

---

## View of park from Depot Avenue



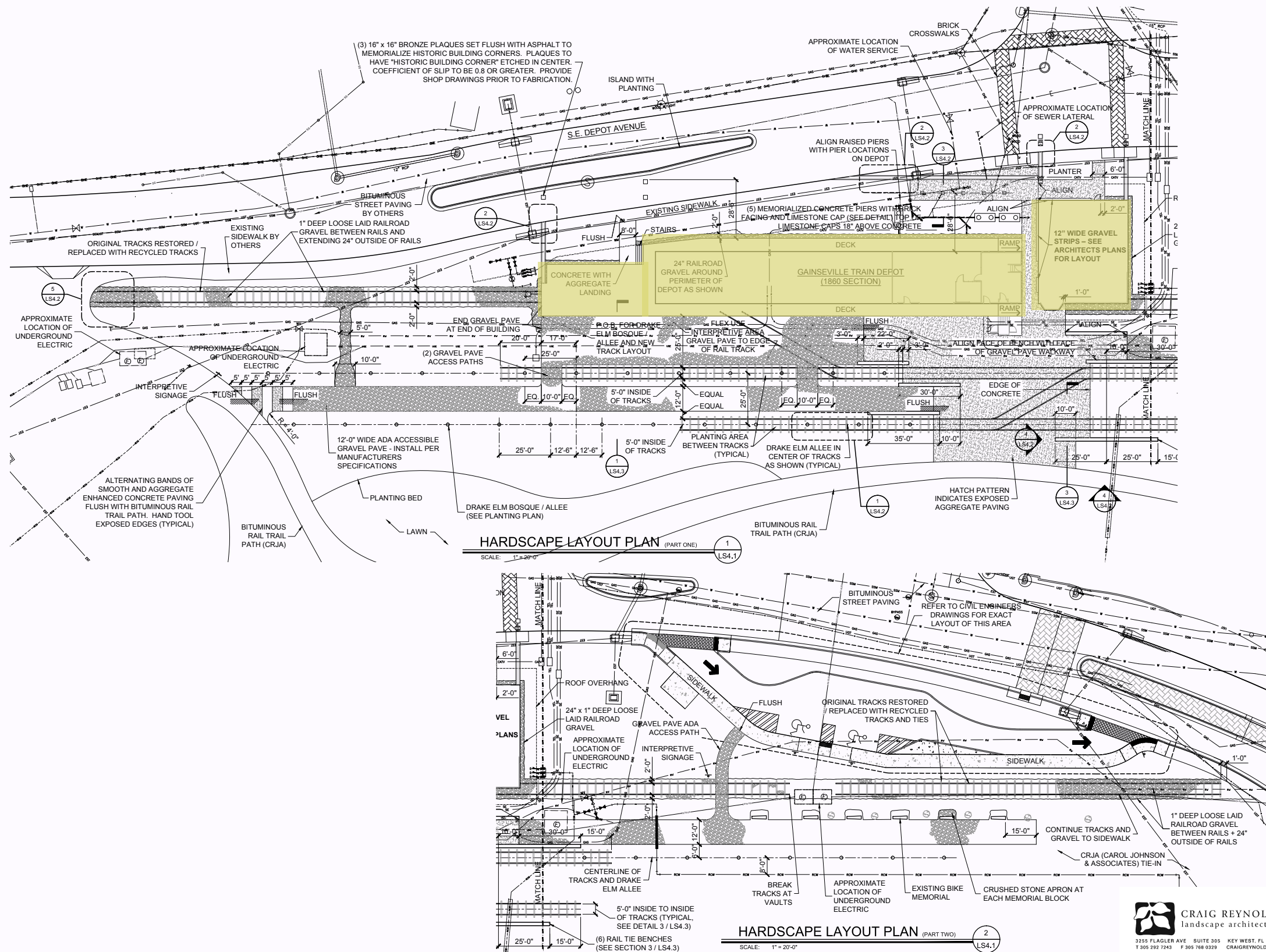


# Depot Building Rehab





# Depot Building Context Area



# HISTORIC DEPOT BUILDING REHABILITATION

201 S.E. DEPOT AVENUE  
GAINESVILLE, FLORIDA  
GAINESVILLE COMMUNITY REDEVELOPMENT AGENCY

410 Angela Street  
Key West, Florida 33040  
Telephone (305) 296-1347  
Facsimile (305) 296-2727  
Florida License AAC002022

Bender &amp; Associates

ARCHITECTS

Project Nº:	0910
-------------	------

CONTEXT AREA  
HARDSCAPE LAYOUT PLAN

Date: 3/7/2011

LS4.1

OF



CRAIG REYNOLDS  
landscape architecture

3255 FLAGLER AVE SUITE 305 KEY WEST, FL 33040  
T 305 292 7243 F 305 768 0329 CRAIGREYNOLDS.NET



# Cade Museum for Innovation and Invention

---

- The museum purpose is to inspire creative thinking, future inventors and early entrepreneurs
- In early 2009, the City of Gainesville expressed support for locating the Cade Museum at Depot Park
- Building construction is planned over two phases
- Phase 1 to break ground in early 2015; \$9M
- Phase 2 to expand facility to 45,000 s.f.; \$9M
- Facility planning and fundraising are underway





# Cade Museum for Innovation and Invention

---





# Issues to be Resolved Before Construction

---

- Schedule of restoration work for remaining non-MGP environmental issues
- Connections to Public Works' stormwater facility
- Funding of park improvements and phasing
- Maintenance of the stormwater and park facilities
- Regulatory issues



# Timeline

---

- December - Presentations to DRAB and CRA
- January - Convene coordination meeting - Cade Museum & CoG
- February/March - Follow up with CRA on timeline and issues
- March - Complete agreement between Museum & CoG
- April/May - Begin Depot Building Context Area
- July - Complete depot building rehab





# Comments and Questions

---

