

#160202

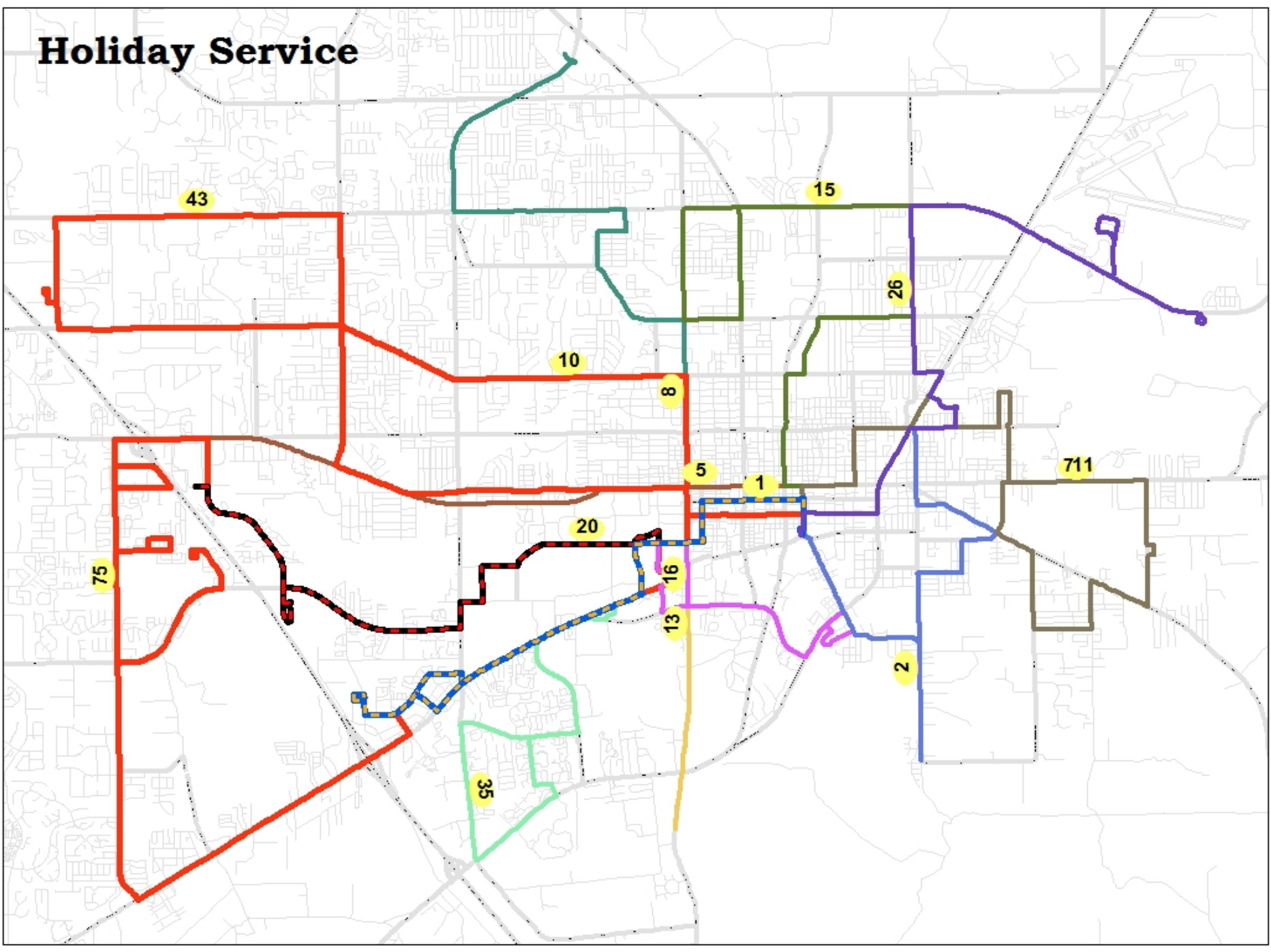
**RTS Citizens Advisory Board
Fall 2016 Service
Public Hearing
(Spring 2016 to Fall 2016 Service
Changes)**

July 27, 2016

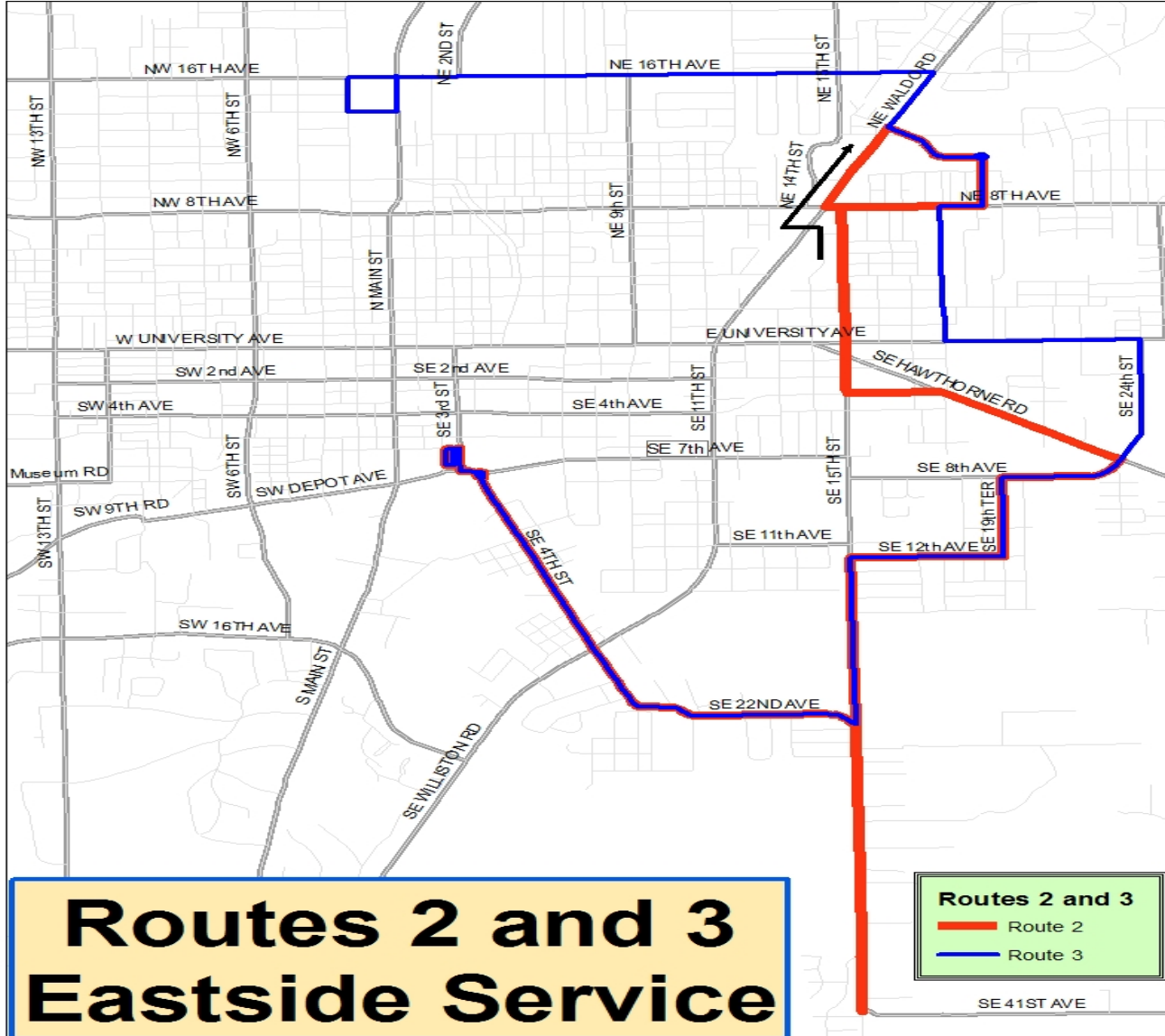
Fall 2016 – City of Gainesville

- Maintain Holiday Service
- Maintain 30-minute frequencies (Routes 2/3 and 24/26)
- Maintain early morning service (Routes 2, 11, 15, and 26)

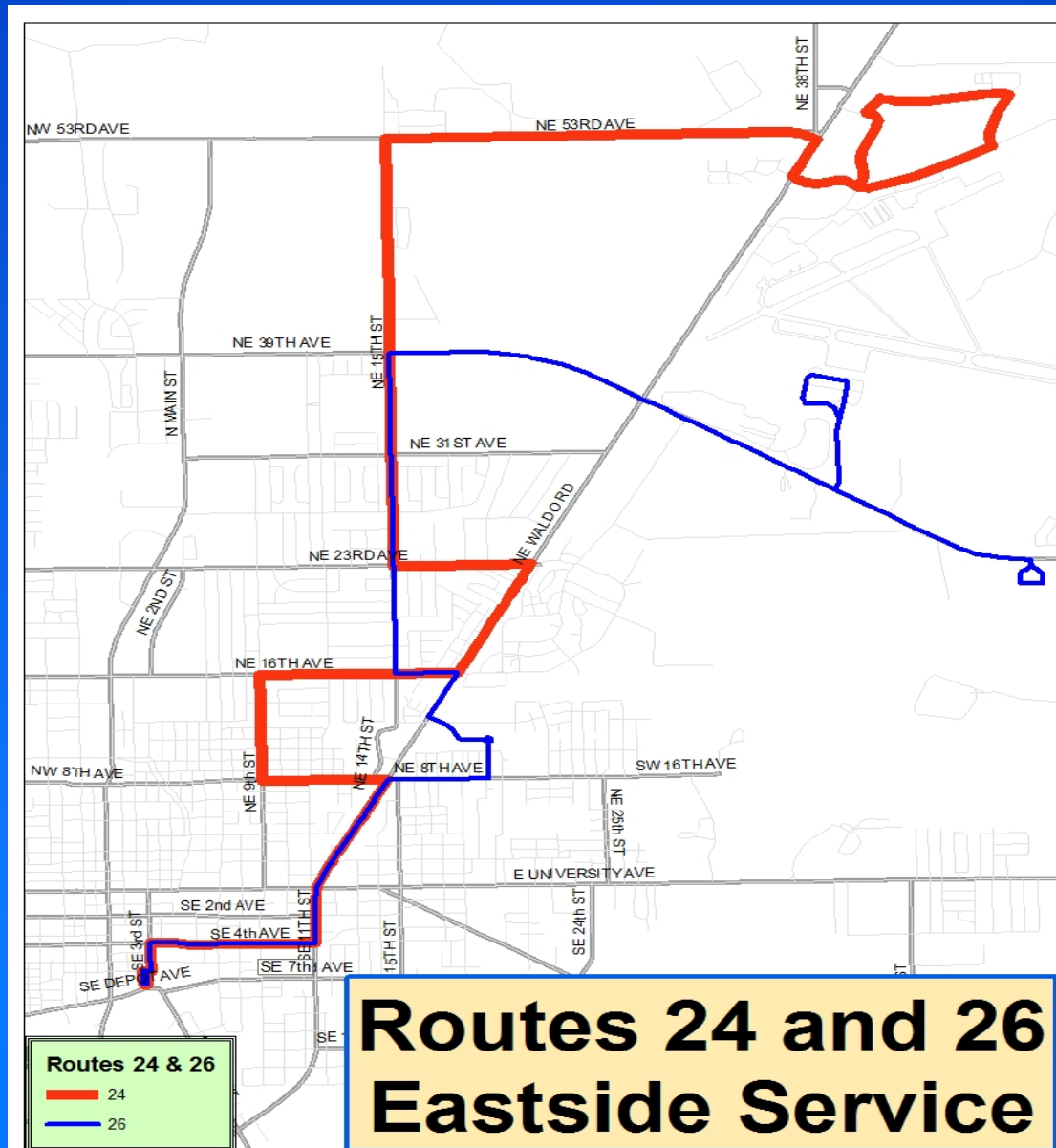
Holiday Service



Fall 2016 – City of Gainesville



Fall 2016 – City of Gainesville



Fall 2016 – Alachua County

- Add Holiday Service (Routes 10, 43, 75)
- Add Saturday work trips (Routes 1, 75, 711)
 - Route 1: Two additional trips in the morning and two in the afternoon.
 - Route 75: Additional trip in the morning and afternoon
 - Route 711: One additional trip in the morning and two in the afternoon
- Add Sunday Service (Route 75) (9:30 am until 5:17 pm)

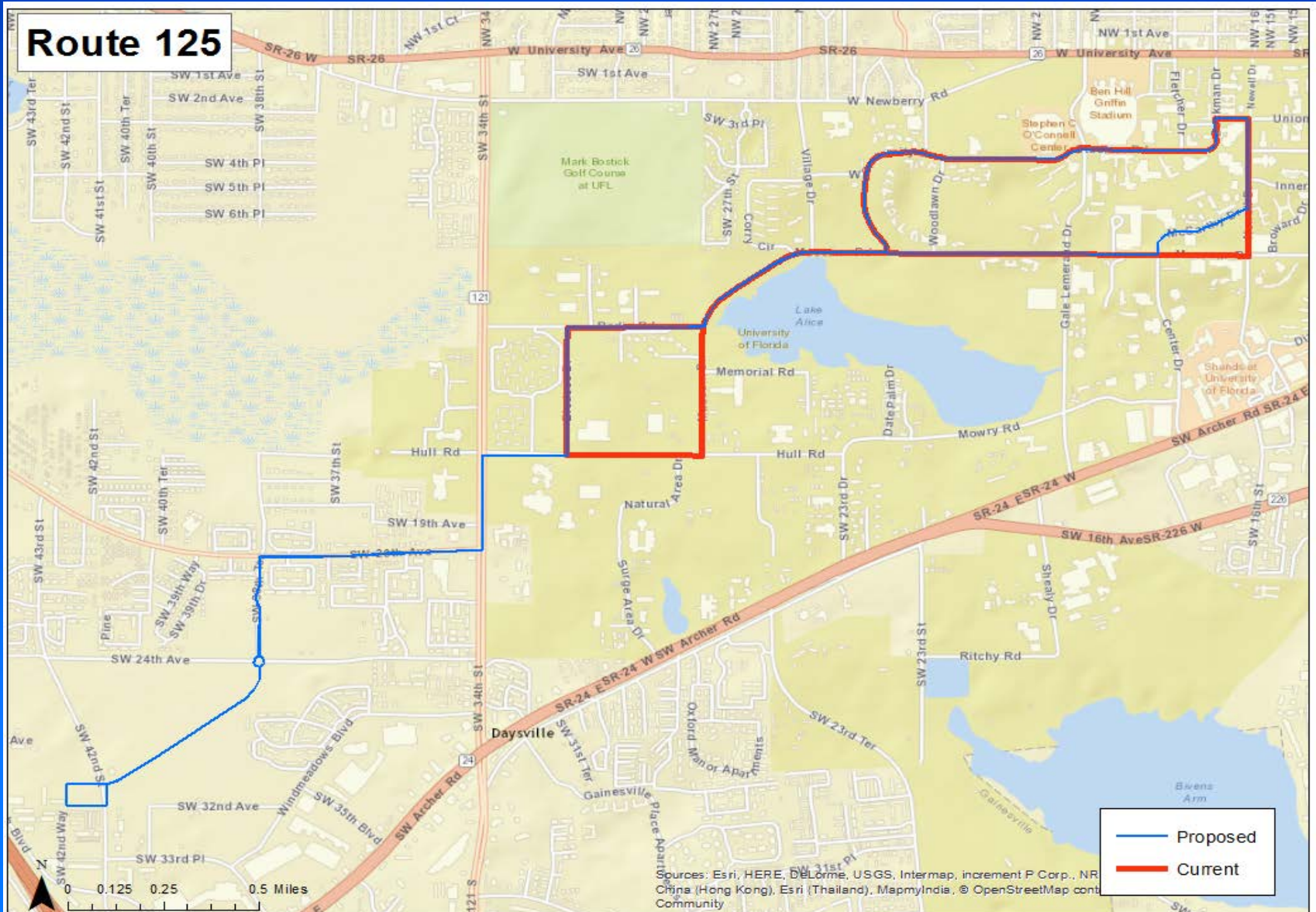
Fall 2016 – Santa Fe College

- Reinstatement of Routes 27, 39, 76, and 77
- Add hours of service on Route 77 until 4PM

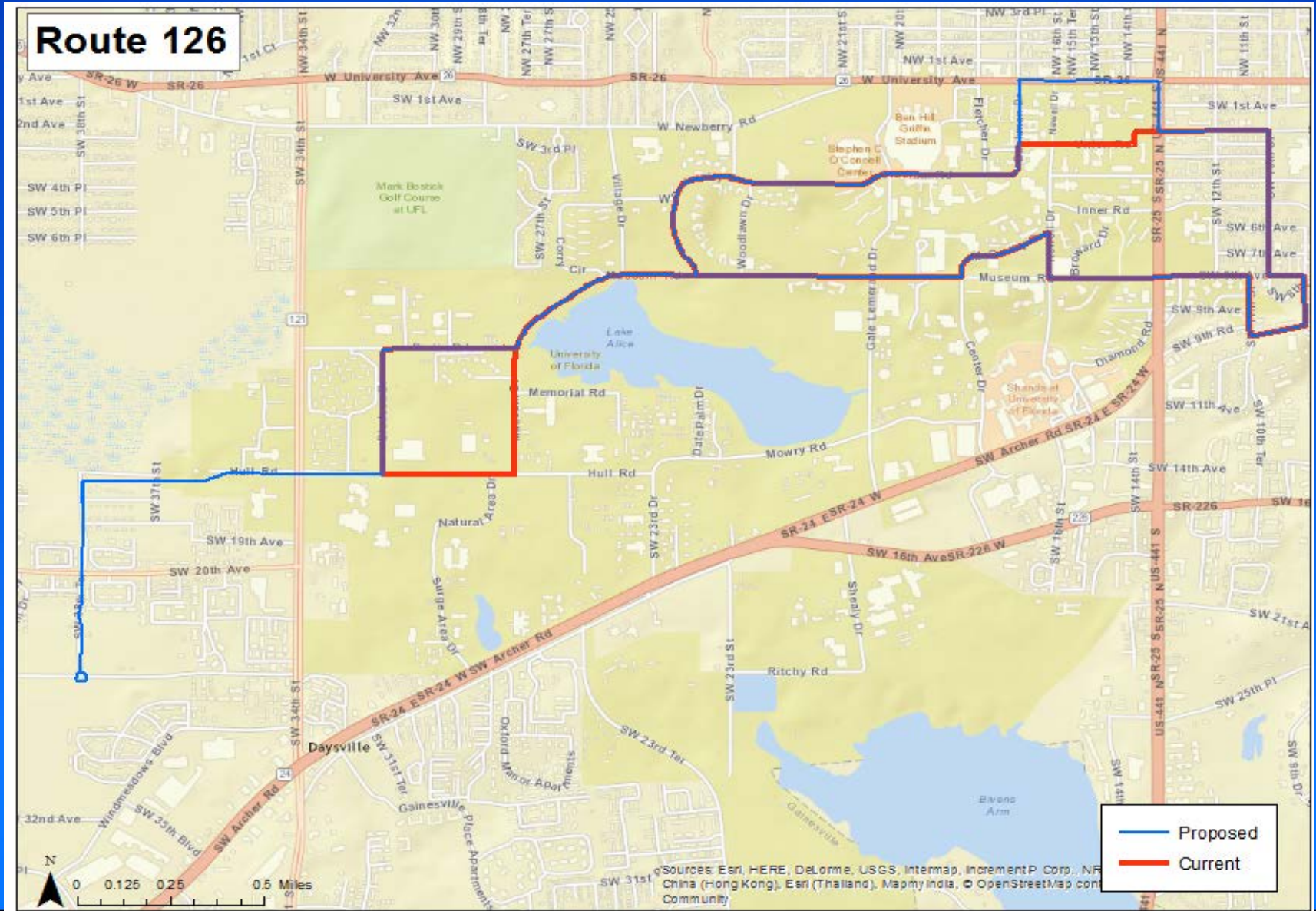
Fall 2016 – University of Florida

- Reinstatement of Routes (19, 28, 29, 36, 37, 40, 118, 121)
- Schedule modifications
 - Route 37: both buses will operate all day
 - Routes 20, 35, and 40: additional peak time.
- Alignment modifications
 - Route 12
 - Route 121
 - Route 125
 - Route 126
 - Route 300

Fall 2016 – University of Florida – Route 125



Fall 2016 – University of Florida – Route 126



Fall 2016 – University of Florida – Route 300

