



Minimum Flows and Levels Results for the Lower Santa Fe and Ichetucknee Rivers and Priority Springs

Ann B. Shortelle, Ph.D.
Executive Director



Minimum Flows and Levels

“The minimum flow for a given watercourse shall be the limit at which further withdrawals would be significantly harmful to the water resources or ecology of the area.”



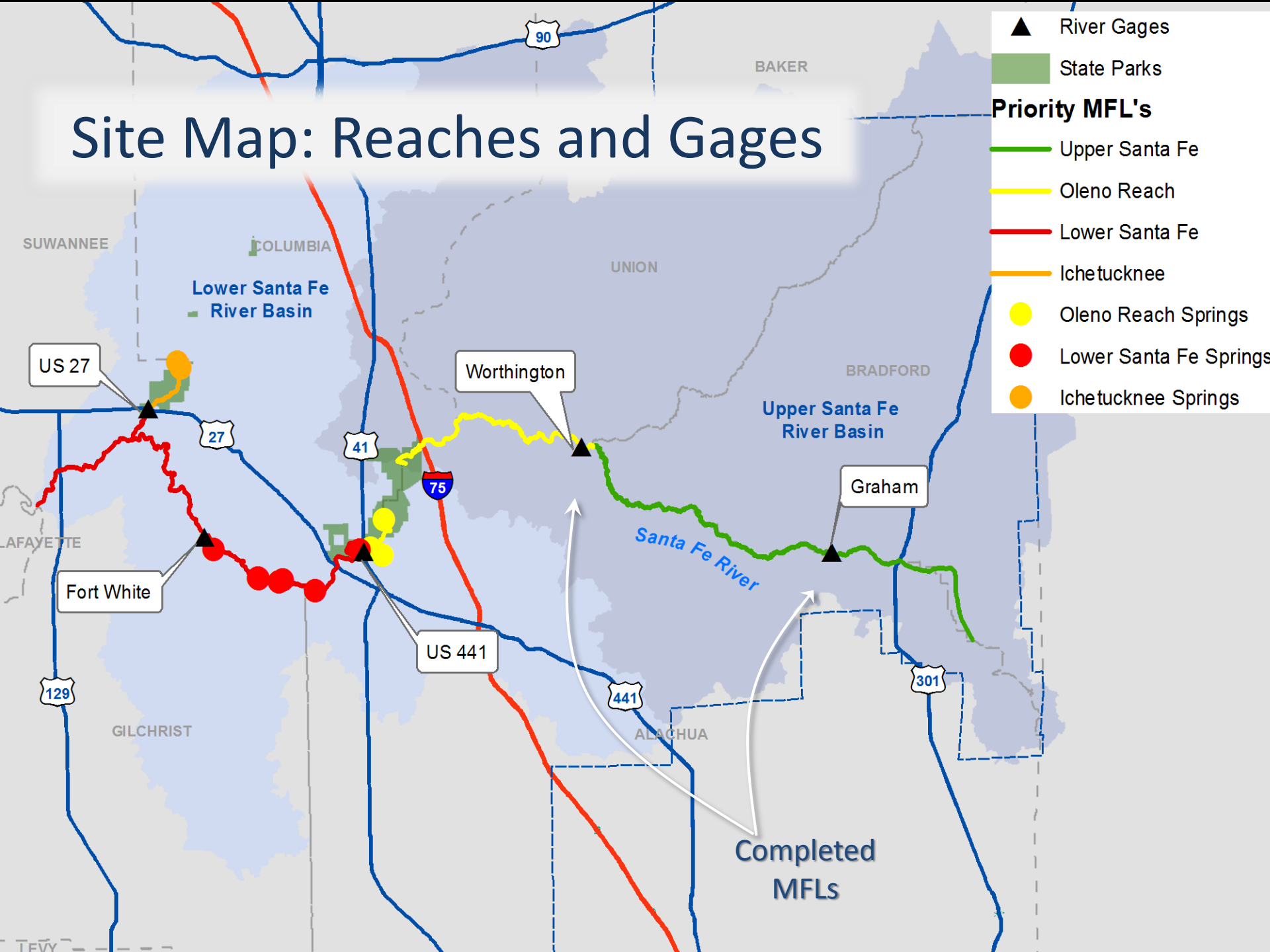


Minimum Flows and Levels Environmental Values

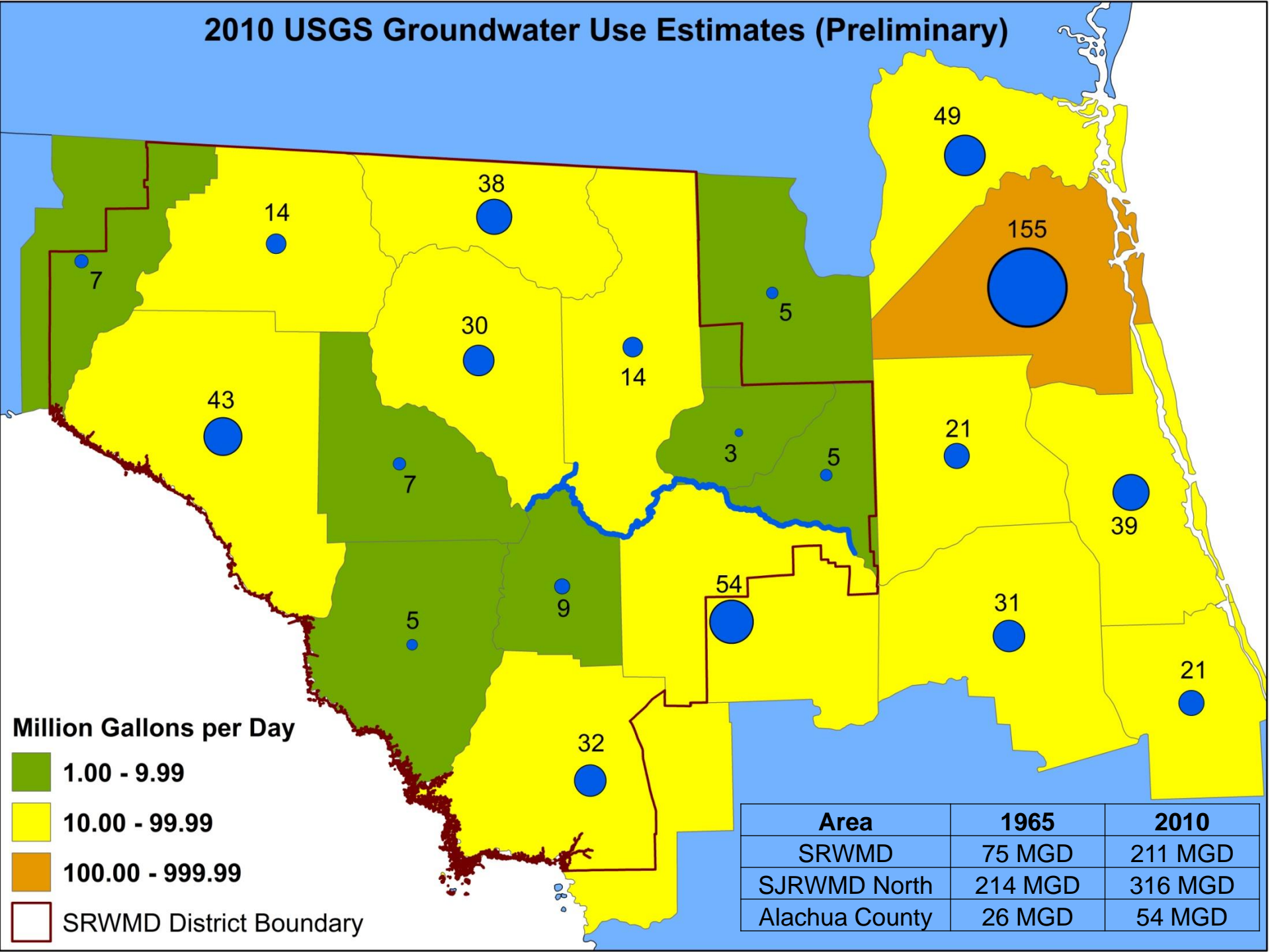
- Recreation
- Fish and wildlife habitats and passage of fish
- Estuarine resources
- Detrital transfer
- Freshwater storage and supply
- Aesthetic and scenic attributes
- Pollutant filtration and adsorption
- Sediment
- Water quality
- Navigation



Site Map: Reaches and Gages

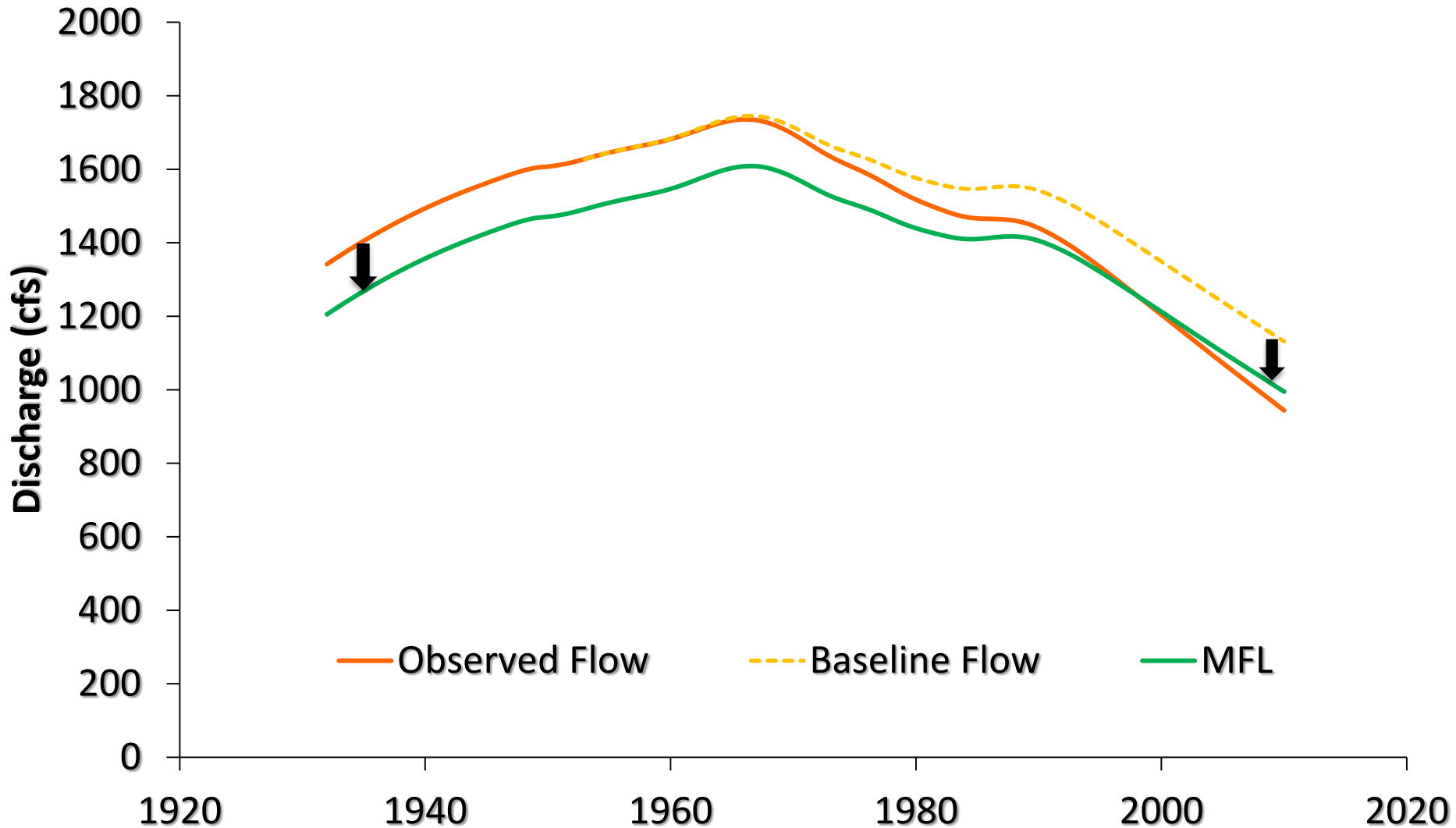


2010 USGS Groundwater Use Estimates (Preliminary)



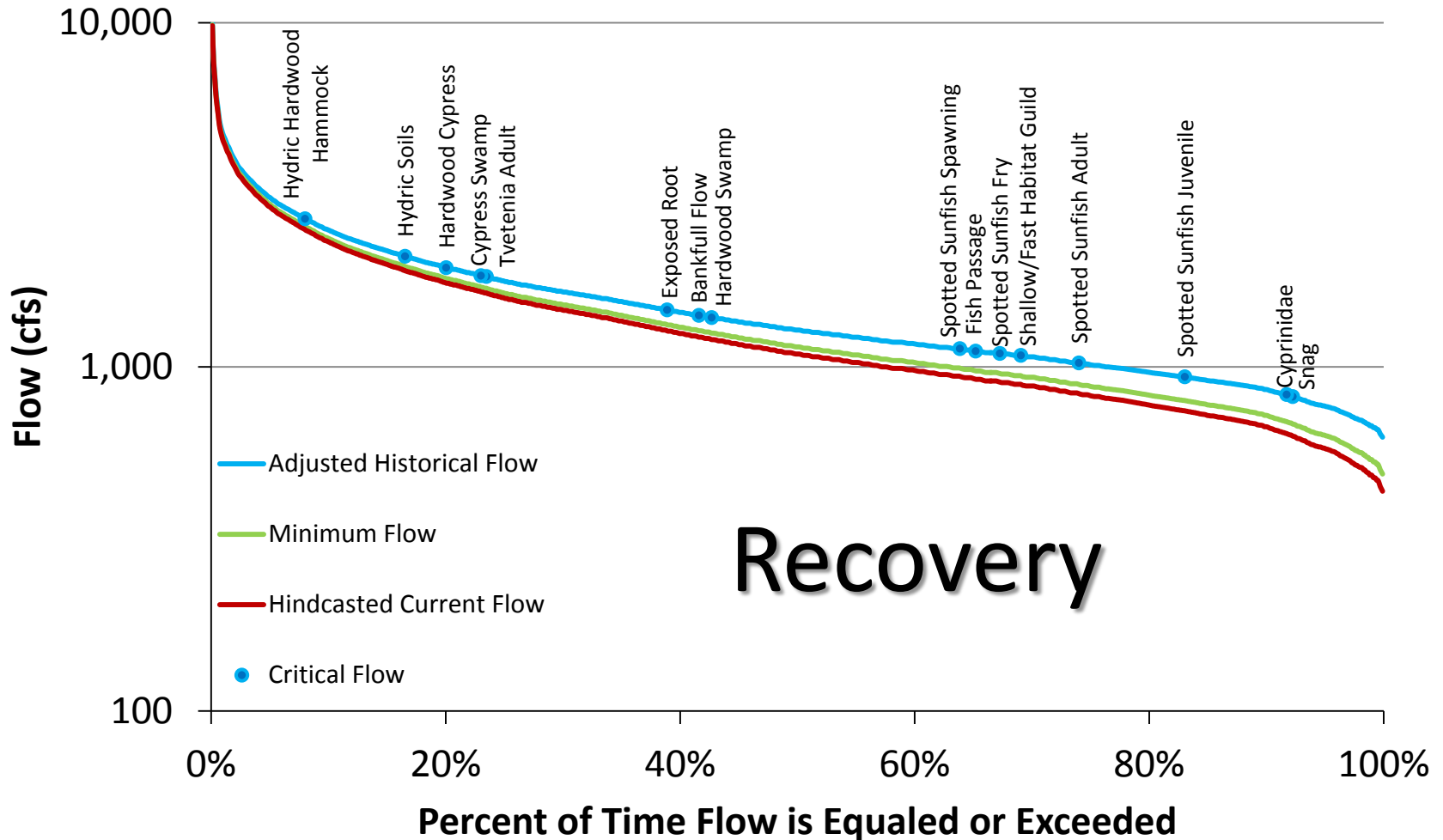


Baseline Condition With MFL Shift



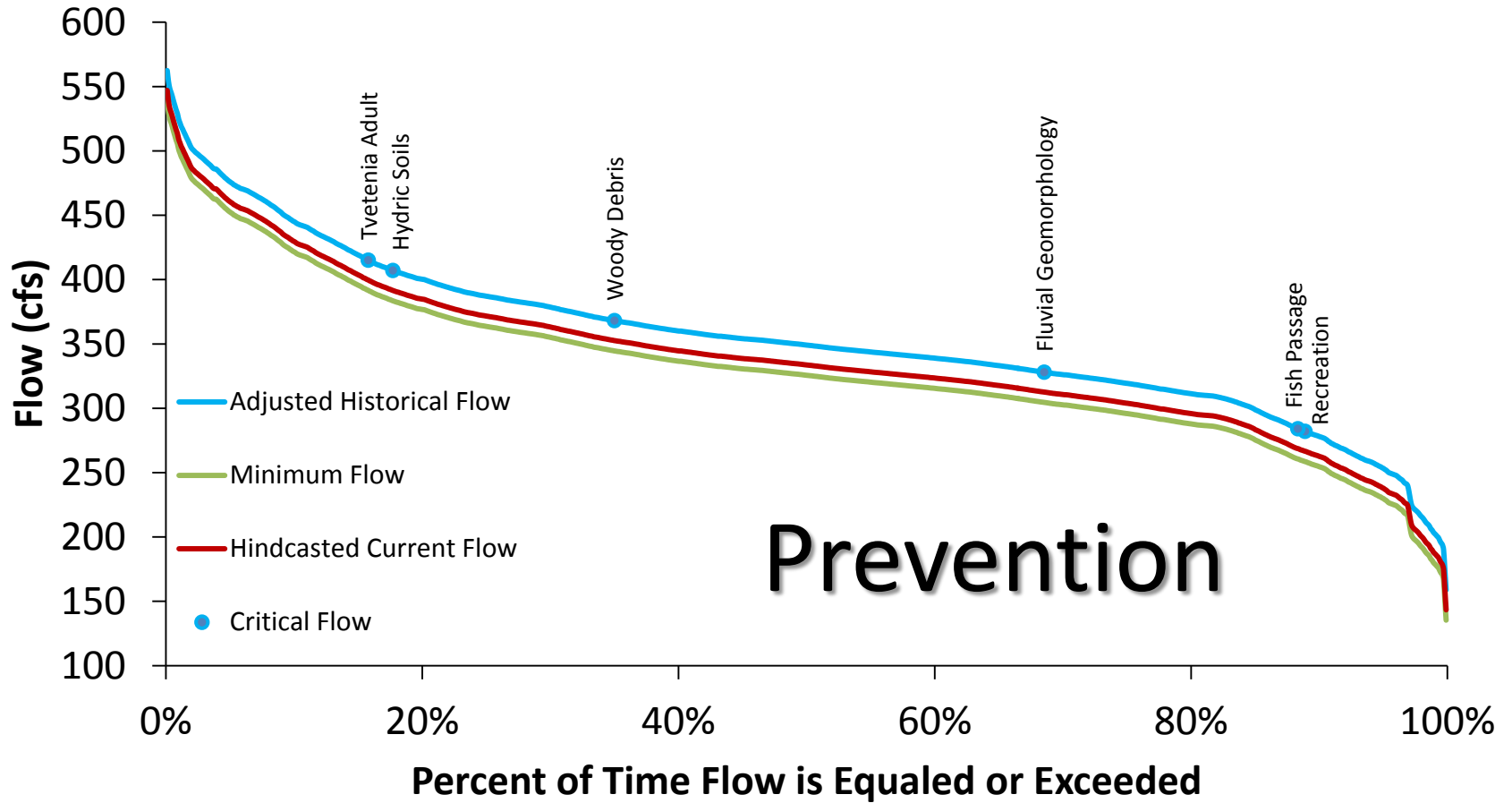


Santa Fe River near Fort White



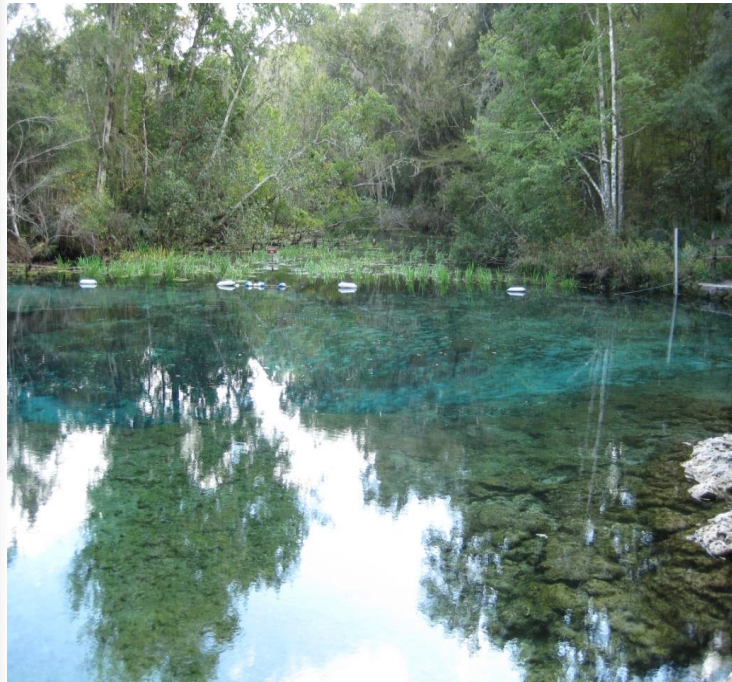


Ichetucknee River at US 27





Lower Santa Fe River and Ichetucknee River Priority Springs Results



Ichetucknee Headspring

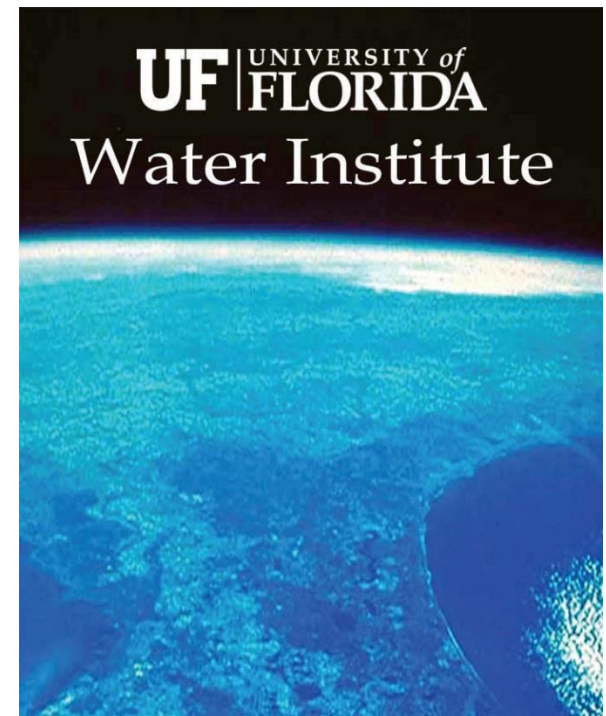


Poe Spring Run



Voluntary Technical Peer-Review And Workshops

- University of Florida Water Institute
 - Peer-review underway
 - Complete October 8
 - Opportunity for public input
- Technical Workshop on MFL Methodologies





MFL Public Input

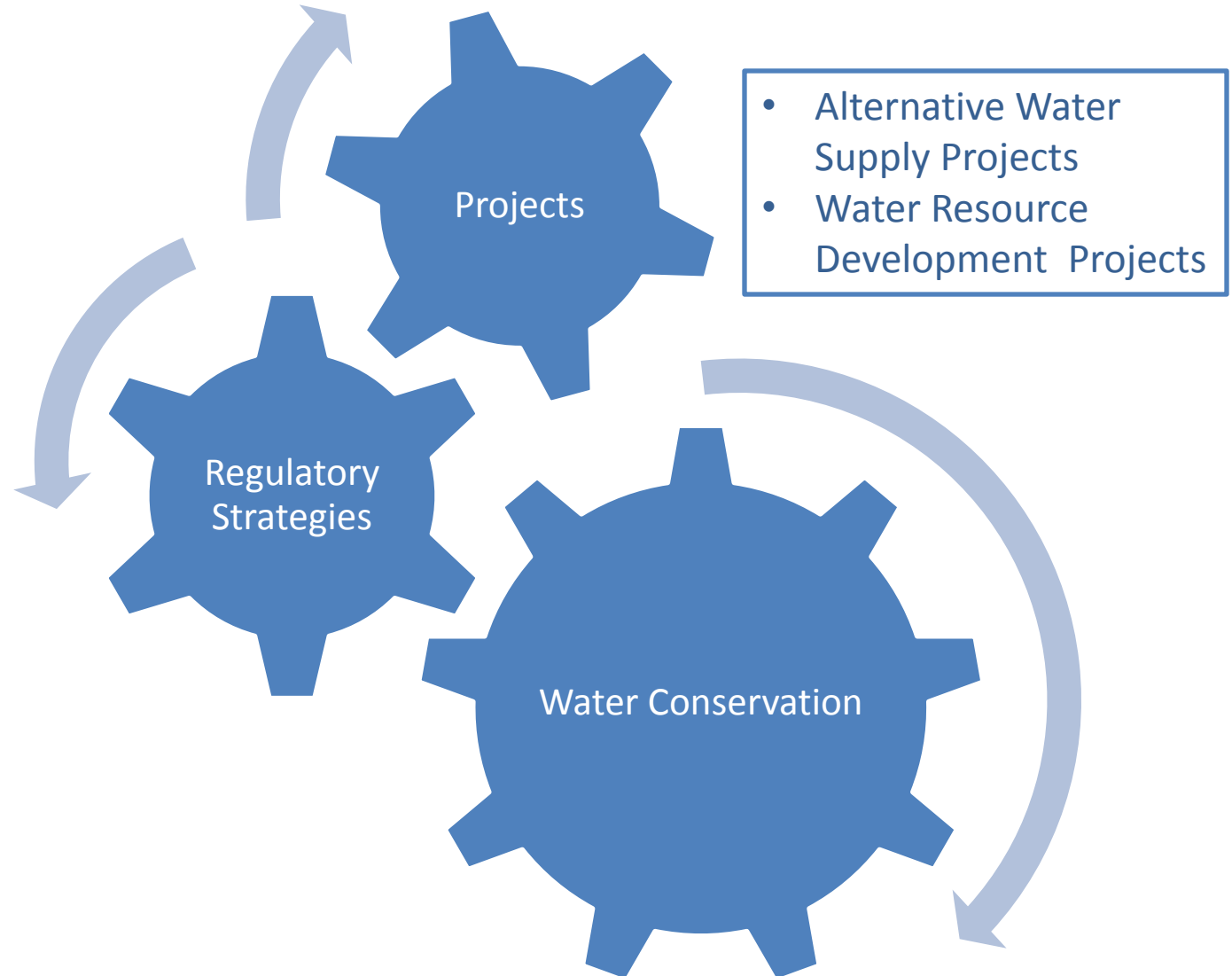
- Public input accepted
- Website for public review/comment:
 - www.mysuwanneeriver.com
 - “Notify me” feature will be used to receive updates
 - mfls@srwmd.org
- North Florida Regional Water Supply Partnership Stakeholders Advisory Committee





Recovery/Prevention Strategies

Developed with Stakeholder Input





Next Steps



Peer Review

- Independent, scientific
- To be completed early Fall 2013

Public Input

- To be completed early Fall 2013
- Multiple options for comment/input

Recovery & Prevention

- Develop strategies with stakeholder involvement
- June 2013 through Fall 2013

DEP Adoption

- MFLs with cross boundary considerations
- District Governing Board Resolution request per new legislation
- DEP approved



Thank you!



Ann B. Shortelle, Ph.D., Executive Director

abs@srwmd.org

386.362.1001