

LEGISLATIVE #

110608D

Appendix B – Data and Analysis Addendum to the Recreation Element

Level of Service

One of the suggestions concerning the Recreation Element was to review the existing level of service standards to consider amending them by either adding or deleting specific facilities or switching to an acreage based standard. Changes made in Florida's Growth Management laws during the 2011 legislative session (House Bill 7207) impact the Recreation Element. Specifically, the City will no longer be required to adopt levels of service for Recreation; and Recreation concurrency becomes optional under the law. Planning and Development Services staff initially recommended that the LOS requirements be deleted from the element, but after meeting with Parks, Recreation and Cultural Affairs (PRCA) staff and the Public Recreation and Park Board, it was determined that some form of level of service standard should remain in the element. The proposal is to switch to an acreage based standard, which is common in Florida jurisdictions and should be simpler and more straightforward in terms of determining compliance with the standards. (See Table 1 in the Goals, Objectives and Policies)

The PRCA Department has begun the process of developing "PRCA Vision 2020," a recreation master plan for the next 10 years. The master planning process will include gathering community input concerning the future plans and priorities for the department and developing a vision and action plan for the provision of recreation services for the city. The plan will address existing parks, recreation programs, open spaces, cultural facilities and programs, conservation lands, festivals, environmental programs and other subjects related to the provision of recreation services. During this process, it may be determined if the City would like to create "aspirational" goals concerning the number and types of facilities that the City and its citizens would like to see provided in the next 10 years. These could be guidelines for how many facilities per a certain population should be provided and strived for during the planning period, but they would not be part of the Comprehensive Plan or used to determine the issuance of development orders.

In reviewing the level of service issue, it was also determined that the language concerning the Park and Facility Substitution standards should be deleted. The planning staff and the Parks, Recreation and Cultural Affairs staff could not recall any instance when these standards were used.

Linking Recreation with other Comprehensive Plan Elements

Another topic that was raised during the discussions was the connection between recreation and other elements of the Comprehensive Plan. Policies in some of the other elements are directly related to the provision of recreation facilities. For example, the Transportation Mobility Element has many policies addressing the provision of transportation facilities that can also be recreation facilities, such as trails, bicycle paths, and sidewalks. These relevant policies are shown on the next page.

**TRANSPORTATION MOBILITY ELEMENT
GOALS, OBJECTIVES AND POLICIES**

TRAIL NETWORK

GOAL 5

DEVELOP AN INTERCONNECTED TRAILS NETWORK THROUGHOUT THE URBAN AREA.

Objective 5.1 Develop, by 2006, an average of at least one mile of trail designed for bicycles, pedestrians, and wheelchairs annually.

Policy 5.1.1 The City shall fill gaps in the Trail Network, as identified in the Data and Analysis Report and the Bicycle Master Plan, by 2010.

Policy 5.1.2 The City shall extend the Trail Network by cooperating with Alachua County in County efforts to expand the Network—both for corridor acquisition and trail construction—particularly for extensions of the Waldo Rail-Trail, the Gainesville-Hawthorne Rail-Trail, and the Archer Road corridor.

Policy 5.1.3 The City shall amend the land development code to require new development and redevelopment to provide pedestrian and bicycle access to nearby trails, where feasible, or to enable a future retrofit connection.

Policy 5.1.4 The City shall evaluate public lands for pedestrian and bicycle trail connections that link various land use destinations by 2003. Utility and stormwater management rights-of-way and easements will also be evaluated for such connections.

Policy 5.1.5 The City shall strive to make conversions of rail corridors to rail-trails permanent and not subject to revision, unless a “rails-with-trails” program is established.

Policy 5.1.6 The City shall encourage adaptive re-use of rarely used or out-of-service rail spurs into bicycle and pedestrian facilities.

Policy 5.1.7 Rail-banking shall be pursued as a way to promote additional trail opportunities, and to keep options open for future inter-city passenger rail corridors.

Petition PB-11-135 CPA
December 5, 2011

Recreational amenities within stormwater management facilities

The City of Gainesville is establishing a stormwater park in the southern part of downtown to clean up a brownfield site, provide stormwater treatment for the downtown area and provide recreational activities and green space in the downtown area. The park is centrally located near the historic center of the community. The location was ideal for providing green space and stormwater treatment in the downtown area. The site contains existing features such as wetlands, rail trails and the old railroad depot. The park will include walking paths, boardwalks, interpretive exhibits, and native vegetation to recreate a natural North Florida wetland landscape. The ponds on the site will treat stormwater naturally and reduce contaminants entering Paynes Prairie. The restoration and redevelopment of the area will provide more opportunities for economic development in the area. This project is a large-scale example of what Stormwater Management Policy 1.9.1 is promoting, namely trail use around any project that creates or enhances green space and natural areas.

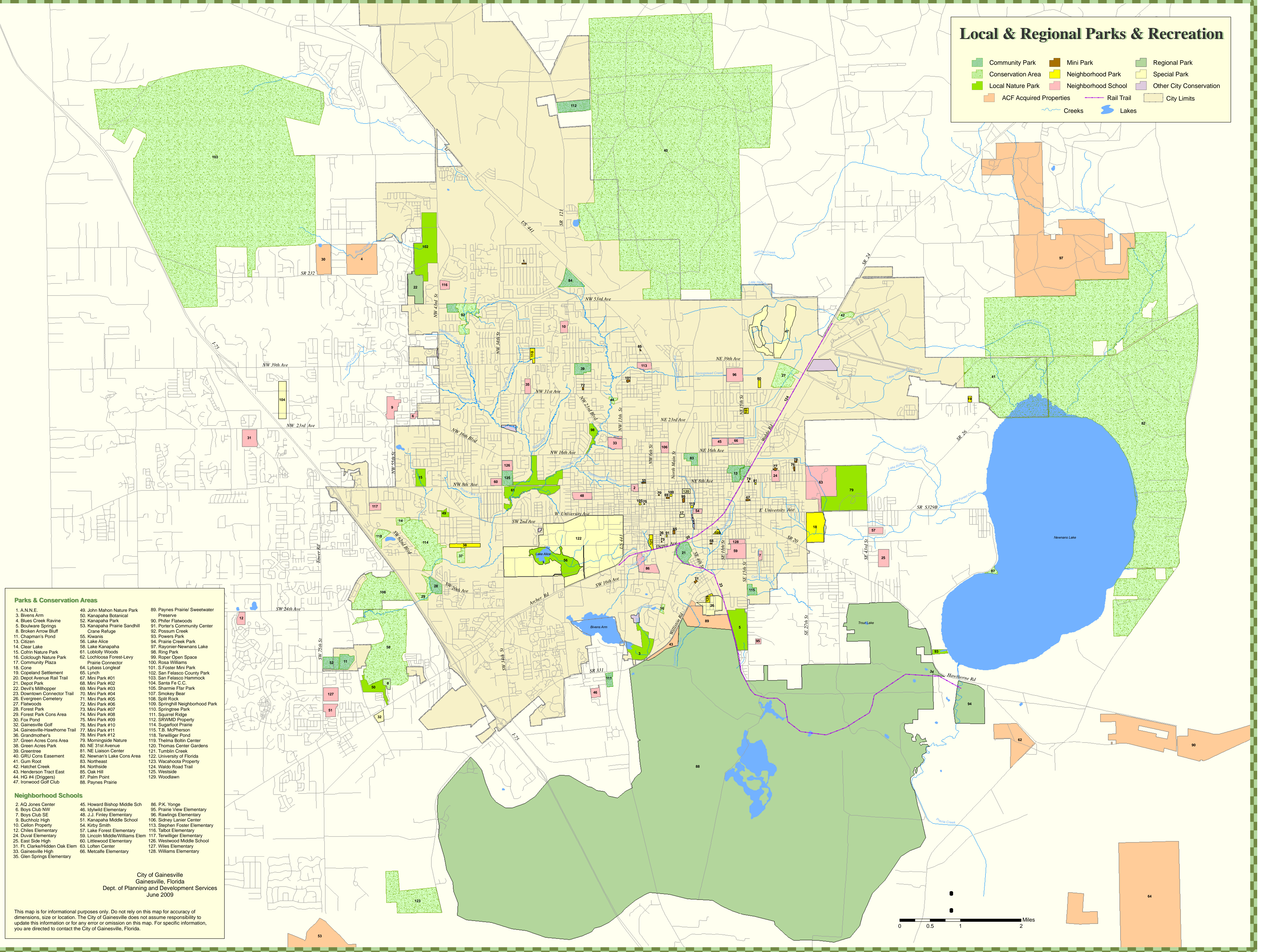
Enhanced stormwater basin design creates an area that provides multiple benefits including the basic need to reduce flooding while adding important wetland functions such as unique plant and wildlife habitat, recreational opportunities, the potential to treat stormwater to a higher level of quality and aesthetics. Enhanced stormwater basins can become effective educational opportunities for teaching people about the relationship between their day-to-day activities and water quality, stormwater, and the natural environment. If trails are incorporated into the design of stormwater basins, with placement around the edge of the basin or a boardwalk through the basin, the teaching moments can be enhanced and where possible, incorporated into the management of these basin systems. (Source: *Enhanced Stormwater Basins, from Florida Field Guide to Low Impact Development, University of Florida IFAS Extension*. http://buildgreen.ufl.edu/Fact_sheet_Enhanced_Stormwater_Basins.pdf)

Petition PB-11-135 CPA
December 5, 2011

MAP 1: Local and Regional Parks and Recreation

Local & Regional Parks & Recreation

	Community Park		Mini Park		Regional Park
	Conservation Area		Neighborhood Park		Special Park
	Local Nature Park		Neighborhood School		Other City Conservation
	ACF Acquired Properties		Rail Trail		City Limits
	Creeks		Lakes		

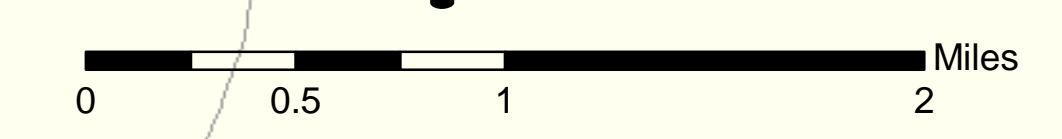


- Parks & Conservation Areas**
- | | | |
|---------------------------------|---|---|
| 1. A.N.N.E. | 49. John Mahon Nature Park | 89. Paynes Prairie/ Sweetwater Preserve |
| 3. Bivens Arm | 50. Kanapaha Botanical | 90. Phifer Flatwoods |
| 4. Blues Creek Ravine | 52. Kanapaha Park | 91. Porter's Community Center |
| 5. Boulware Springs | 53. Kanapaha Prairie Sandhill Crane Refuge | 92. Possum Creek |
| 8. Broken Arrow Bluff | 55. Kiwanis | 93. Powers Park |
| 11. Chapman's Pond | 56. Lake Alice | 94. Prairie Creek Park |
| 13. Citizen | 58. Lake Kanapaha | 97. Rayner-Newmans Lake |
| 14. Clear Lake | 61. Loblolly Woods | 98. Ring Park |
| 15. Coffin Nature Park | 62. Lochloosa Forest-Levy Prairie Connector | 99. Roper Open Space |
| 16. Coldough Nature Park | 64. Lybass Longleaf | 100. Rosa Williams |
| 17. Community Plaza | 65. Lynch | 101. S. Foster Mini Park |
| 18. Cone | 67. Mini Park #01 | 102. San Felasco County Park |
| 19. Copeland Settlement | 68. Mini Park #02 | 103. San Felasco Hammock |
| 20. Depot Avenue Rail Trail | 69. Mini Park #03 | 104. Santa Fe C.C. |
| 21. Depot Park | 70. Mini Park #04 | 105. Sharmie Flar Park |
| 22. Devil's Millhopper | 71. Mini Park #05 | 107. Smokey Bear |
| 23. Downtown Connector Trail | 72. Mini Park #06 | 108. Split Rock |
| 26. Evergreen Cemetery | 73. Mini Park #07 | 109. Springhill Neighborhood Park |
| 27. Flatwoods | 74. Mini Park #08 | 110. Springtree Park |
| 28. Forest Park | 75. Mini Park #09 | 111. Squirrel Ridge |
| 29. Forest Park Cons Area | 76. Mini Park #10 | 112. SRWMD Property |
| 30. Fox Pond | 77. Mini Park #11 | 114. Sugarfoot Prairie |
| 32. Gainesville Golf | 78. Mini Park #12 | 115. T.B. McPherson |
| 34. Gainesville-Hawthorne Trail | 79. Morningside Nature | 118. Terwilliger Pond |
| 36. Grandmother's | 80. NE 31st Avenue | 119. Thelma Bolin Center |
| 37. Green Acres Cons Area | 81. NE Liaison Center | 120. Thomas Center Gardens |
| 38. Green Acres Park | 82. Newnan's Lake Cons Area | 121. Tumblin Creek |
| 39. Greentree | 83. Northeast | 122. University of Florida |
| 40. GRU Cons Easement | 84. Northside | 123. Wachahota Property |
| 41. Gum Root | 85. Oak Hill | 124. Wailes Road Trail |
| 42. Hatcher Creek | 87. Palm Point | 125. Westside |
| 43. Henderson Tract East | 88. Paynes Prairie | 129. Woodlawn |
| 44. HG #4 (Draggers) | | |
| 47. Ironwood Golf Club | | |

- Neighborhood Schools**
- | | | |
|--------------------------------|----------------------------------|--------------------------------|
| 2. AQ Jones Center | 45. Howard Bishop Middle Sch | 86. P.K. Yonge |
| 6. Boys Club NW | 46. Idylwild Elementary | 95. Prairie View Elementary |
| 7. Boys Club SE | 48. J.J. Finley Elementary | 96. Rawlings Elementary |
| 9. Buchholz High | 51. Kanapaha Middle School | 106. Sidney Lanier Center |
| 10. Cellon Property | 54. Kirby Smith | 113. Stephen Foster Elementary |
| 12. Chiles Elementary | 57. Lake Forest Elementary | 116. Talbot Elementary |
| 24. Duval Elementary | 59. Lincoln Middle/Williams Elem | 117. Terwilliger Elementary |
| 25. East Side High | 60. Littlewood Elementary | 126. Westwood Middle School |
| 31. Ft. Clarke/Hidden Oak Elem | 63. Lofton Center | 127. Wiles Elementary |
| 33. Gainesville High | 66. Metcalfe Elementary | 128. Williams Elementary |
| 35. Glen Springs Elementary | | |

City of Gainesville
Gainesville, Florida
Dept. of Planning and Development Services
June 2009

This map is for informational purposes only. Do not rely on this map for accuracy of dimensions, size or location. The City of Gainesville does not assume responsibility to update this information or for any error or omission on this map. For specific information, you are directed to contact the City of Gainesville, Florida.



Petition PB-11-135 CPA
December 5, 2011

TABLE 1

Proposed Level of Service Standards (LOS) for Parks and Facilities

FACILITY

Swim Pool (50 m)	3 pools total; 2 are 50m in size.
Swim Pool (25 yd)	Third pool is less than 50m in size
Softball Field (adult)	12
Soccer Field	6 not including SBAC or colleges; 24 including all SBAC sites; (8 at UF, 1 at Santa Fe). We count 14; 6 plus 8 at Lincoln.
Trail/Linear Corridor/Greenway	30 miles not including any of Gainesville/Hawthorne trail
Basketball Court	56 hoops (an estimated 28 courts)
Tennis Court	22
Racquetball Court	14 (15 at UF, 8 at Santa Fe)
Equipped Play Area	28

PARK

Local Nature/CON	2,270.6 1,953.97(City only, including Palm Point, not Depot Park)
Sports Complex	If Boulware Springs is counted as before, 103 acres.
Community Park	266 265.35 acres (Community park acreage minus Boulware S. and Forest Park)
Neighborhood Park	161.3 165.0 acres (not including SBAC)

FACILITY	Existing 2000 LOS Standard	Current LOS Standard (2010)
Swim Pool (50m)	1 per 85,000	1 per 62,952
Swim Pool (25 yd)	1 per 75,000	1 per 41,968
Softball Field (adult)	1 per 14,000	1 per 10,492
Soccer Field	1 per 11,000	1 per 20,984 without SBAC; 1 per 8,993 with SBAC
Trail/Linear Corridor/Greenway	1 mile per 4,500	1 mile per 4,197*
Basketball Court	1 per 4,500	1 per 4,497
Tennis Court	1 per 6,000	1 per 5,722
Racquetball Court	1 per 12,000	1 per 8,993
Equipped Play Area	1 per 10,000	1 per 4,497**
PARK	Existing 2000 LOS Standard	Current LOS Standard (2011)
Local Nature/Conservation	6.00 acres	15.71 acres**
Sports Complex	0.50 acres	0.82 acres
Community Park	2.00 acres	2.13 acres
Neighborhood Park	0.80 acres	1.33 acres
Total Acres Per 1000	9.30 8.80 acres	19.73 acres

* Does not include Duval Stormwater Park

** Does not include Depot Park.

NOTES:

- * The LOS is based on the September 20, 2011 estimated City of Gainesville population of 124,379
- * Park standards are in acres per 1,000 people.
- * SBAC - School Board of Alachua County