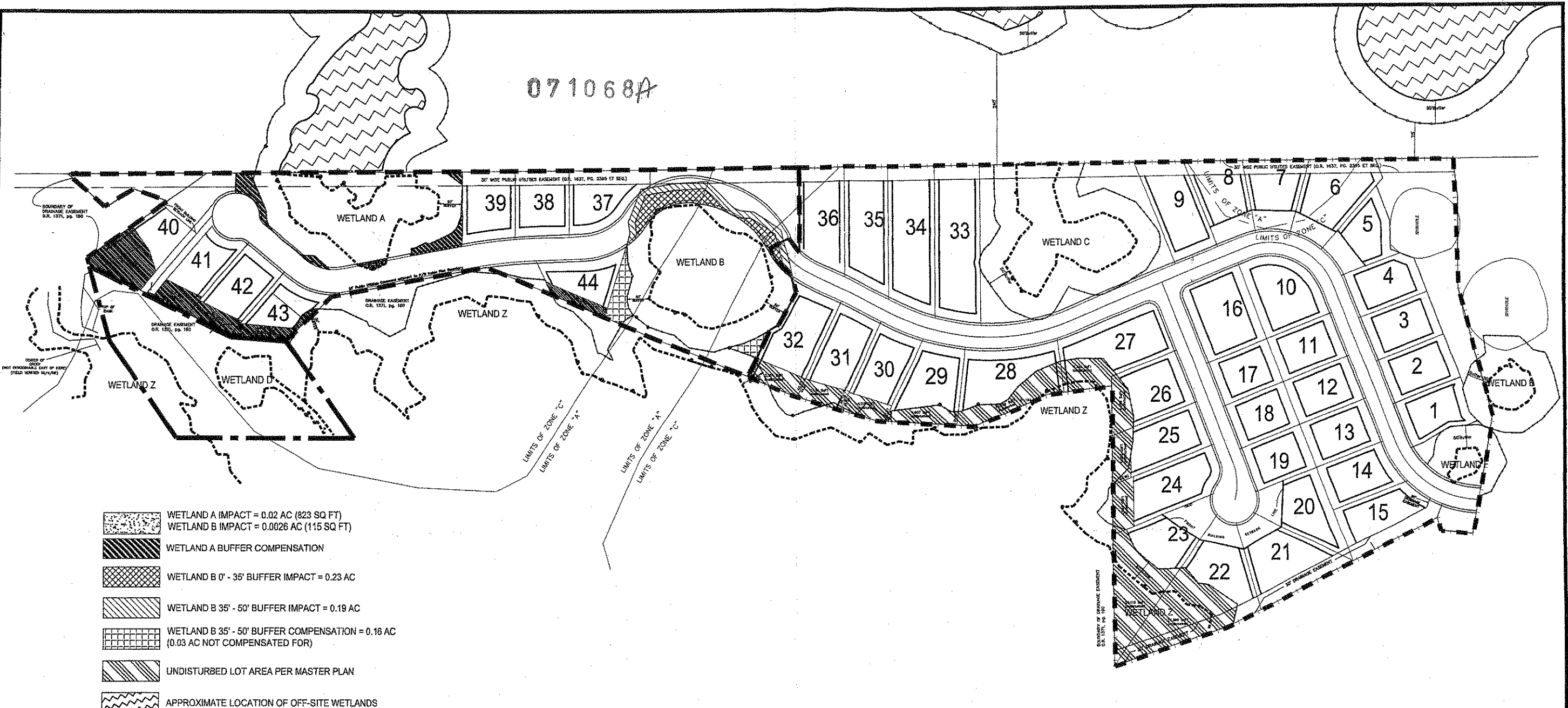


071068A



- WETLAND A IMPACT = 0.02 AC (823 SQ FT)
WETLAND B IMPACT = 0.0026 AC (115 SQ FT)
- WETLAND A BUFFER COMPENSATION
- WETLAND B 0' - 35' BUFFER IMPACT = 0.23 AC
- WETLAND B 35' - 50' BUFFER IMPACT = 0.19 AC
- WETLAND B 35' - 50' BUFFER COMPENSATION = 0.16 AC
(0.03 AC NOT COMPENSATED FOR)
- UNDISTURBED LOT AREA PER MASTER PLAN
- APPROXIMATE LOCATION OF OFF-SITE WETLANDS
- MITIGATION AREA = 2.4 AC
- PHASE 2 = 26.5 AC
- PHASE 3 = 10.1 AC
- WETLAND LINE
- 50' WETLAND BUFFER

WETLAND ACREAGE WITHIN BOUNDARIES OF PHASES 2 & 3 AND MITIGATION AREA			
WETLAND ID	SIZE	IMPACTED	AVOIDED & PRESERVED
WA	0.91	0.02	0.89
WB	1.22	0.26*	1.217
WC	0.94	0	0.94
WD	0.24	0	0.24
WE	0.18	0	0.18
WZ	1.06	0	1.06
TOTAL	4.55	0.28	4.527

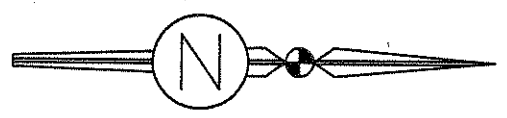
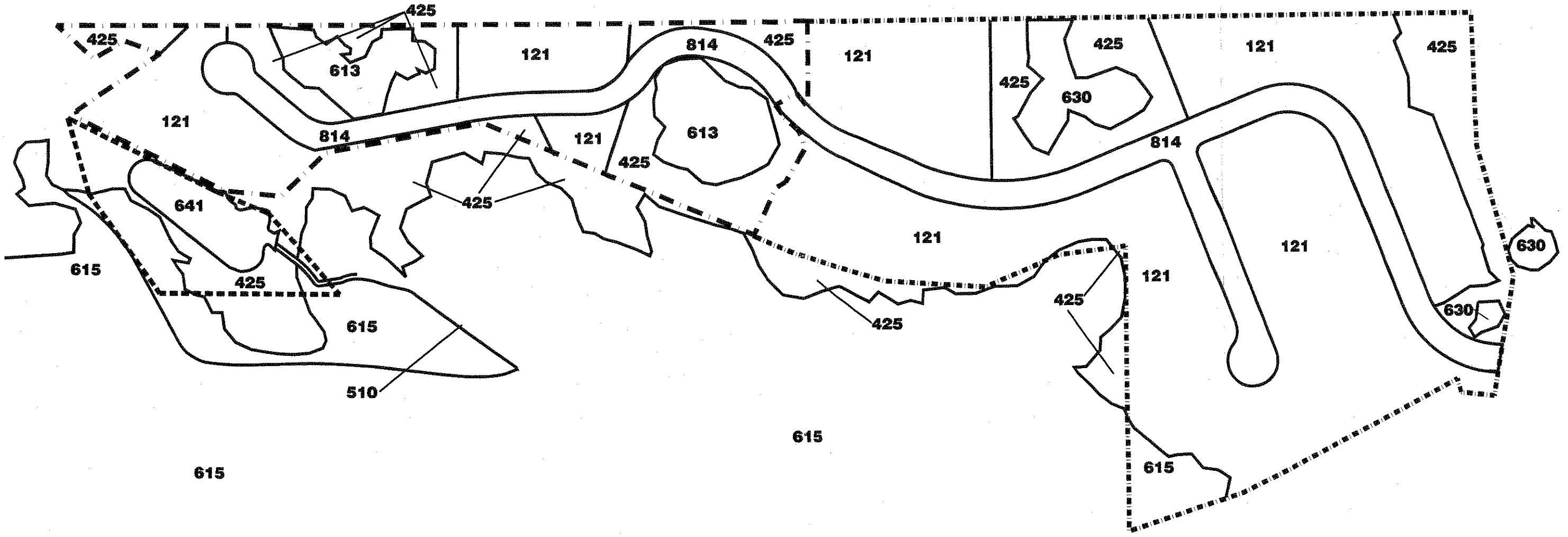
*0.0026 ACRES OF WETLAND IMPACTS, 0.23 ACRES OF BUFFER IMPACTS.

PERMIT DRAWING 2
 LOT LAYOUT AND WETLAND IMPACTS
 BLUES CREEK UNIT 5
 PHASES 2 AND 3
 ALACHUA COUNTY, FLORIDA

EC&D
 environmental consulting & design, inc.
 1425 NW 6th Street, Gainesville, Florida 32601
 o: 352-371-4333 f: 352-371-0020

RECORDED
 JUN 13 2007
 PLANNING
 DIVISION

071068A



PRE-DEVELOPMENT F.L.U.C.F.C.S.	
NO.	DESCRIPTION
425	TEMPERATE HARDWOOD
510	STREAMS AND WATERWAYS
613	GUM SWAMPS
615	STREAM AND LAKE SWAMPS
630	WETLAND FOREST MIXED
641	FRESHWATER MARSH
814	ROADS
830	UTILITIES
121	FIXED SINGLE FAMILY UNITS

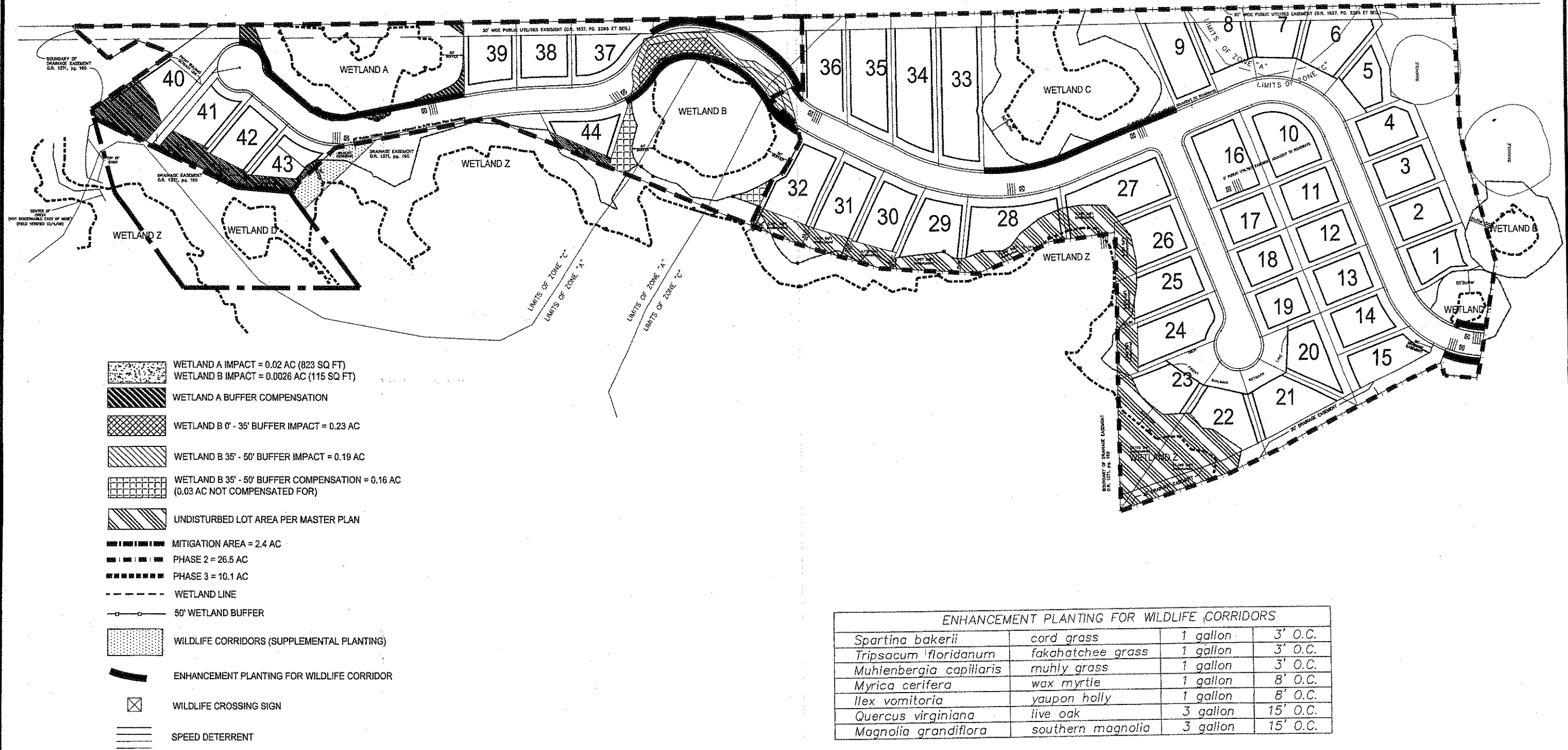
- - - - - PHASE 3 = 10.1 AC
 PHASE 2 = 26.6 AC
 ■ ■ ■ ■ ■ MITIGATION AREA = 2.4 AC

RECEIVED
 JUN 13 2007
 PLANNING
 DIVISION

PERMIT DRAWING 5
 POST-DEVELOPMENT FLUCFCS
 BLUES CREEK UNIT 5
 PHASES 2 AND 3
 ALACHUA COUNTY, FLORIDA

EC&D
 environmental consulting & design, Inc.
 1425 NW 8th Street, Gainesville, Florida 32601
 o: 352-371-4333 f: 352-371-0020

071068A



ENHANCEMENT PLANTING FOR WILDLIFE CORRIDORS			
<i>Spartina bakerii</i>	cord grass	1 gallon	3' O.C.
<i>Tripsacum floridanum</i>	fakahatchee grass	1 gallon	3' O.C.
<i>Muhlenbergia capillaris</i>	muhly grass	1 gallon	3' O.C.
<i>Myrica cerifera</i>	wax myrtle	1 gallon	8' O.C.
<i>Ilex vomitoria</i>	yaupon holly	1 gallon	8' O.C.
<i>Quercus virginiana</i>	live oak	3 gallon	15' O.C.
<i>Magnolia grandiflora</i>	southern magnolia	3 gallon	15' O.C.

PERMIT DRAWING 8
 MITIGATION FOR SECONDARY IMPACTS
 BLUES CREEK UNIT 5
 PHASES 2 AND 3
 ALACHUA COUNTY, FLORIDA

