

NE 7TH PL

#091063



NE 6TH AVE

SEABOARD COASTLINE ABANDONED RAILROAD

WALDO ROAD STATE ROAD NO 24

NE 12TH COURT

NE 14TH ST

NE 6TH PL

NE 6TH AVE

NE 5TH PL

NE 5TH AVE

NE 4TH AVE

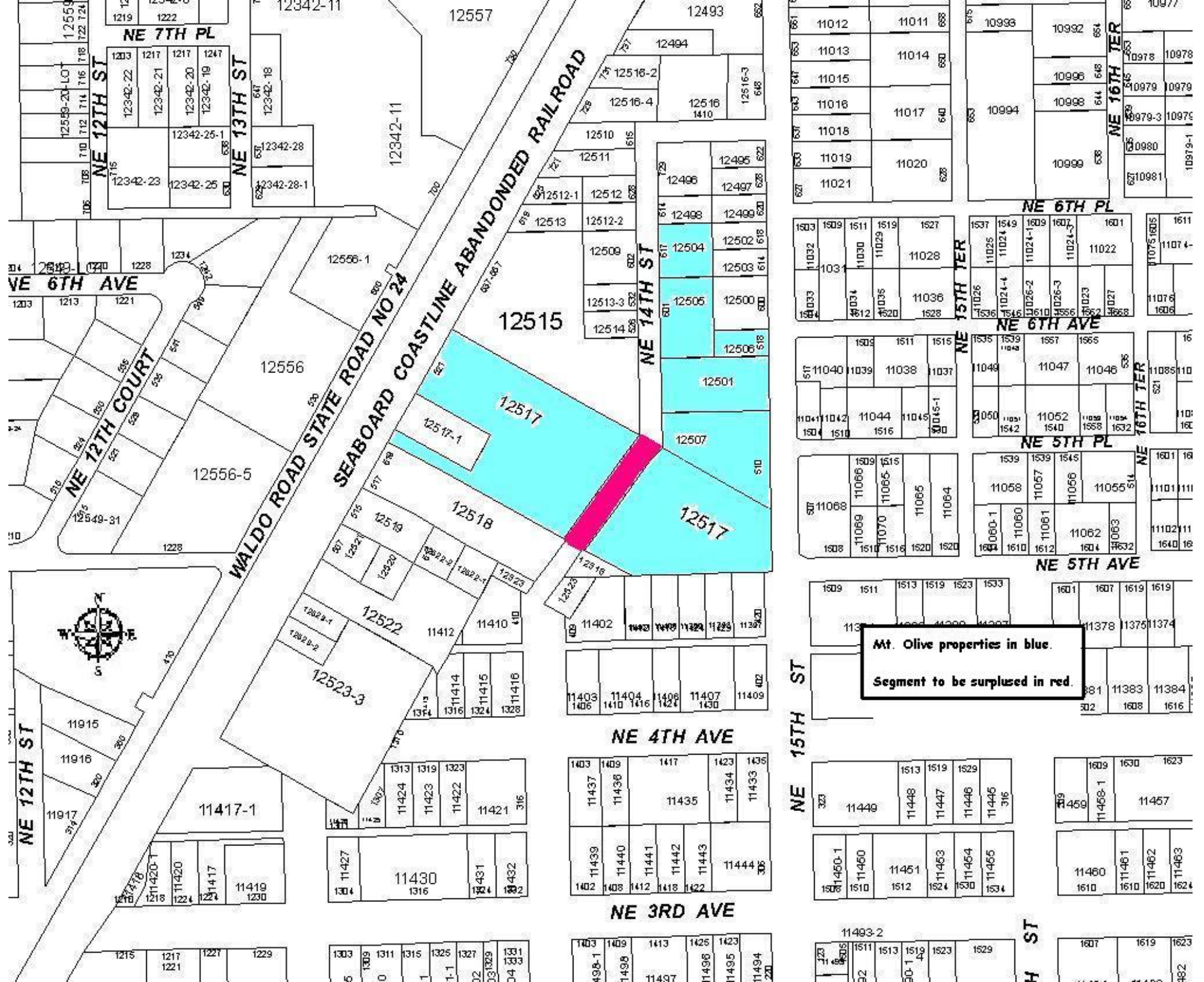
NE 15TH ST

NE 3RD AVE

At Olive properties bordered in yellow. Segment in red to be declared surplus.

NE 12TH ST

H ST



Mt. Olive properties in blue.
Segment to be surplus in red.