

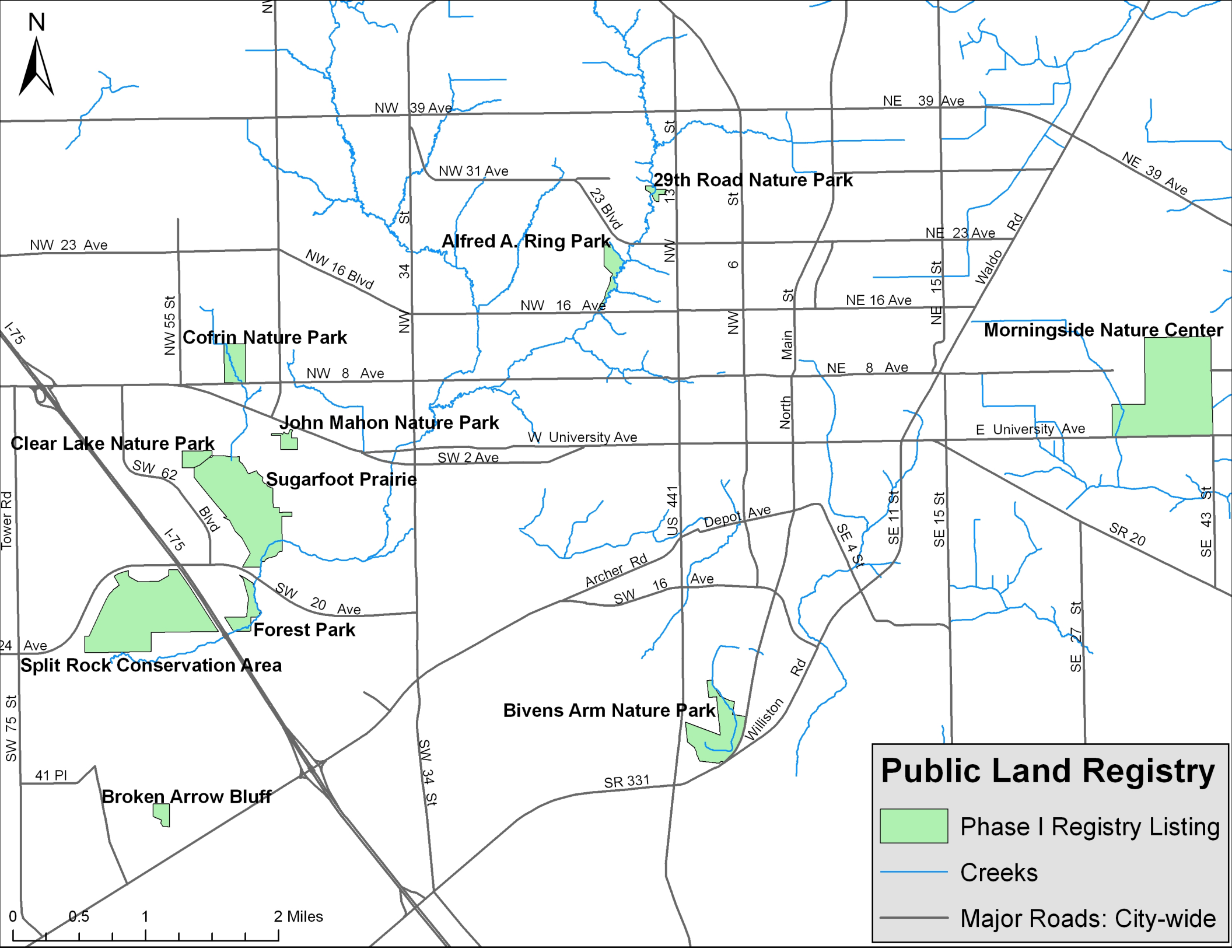
Properties currently included in the City of Gainesville Land Registry:

Phase I (approved March 2011):

29th Road Nature Park – 1502 NW 29th Rd
Alfred A. Ring Park – 1801 NW 23rd Blvd
Bivens Arm Nature Park – 3650 S Main St
Broken Arrow Bluff Nature Park – 5724 SW 46th Pl
Clear Lake Nature Park – 5480 SW 1st Ave
Cofrin Nature Park – 4810 NW 8th Ave
Forest Park – SW 20th Ave
John Mahon Nature Park – 4300 Block W Newberry Rd
Morningside Nature Center – 3540 E University Ave
Split Rock Conservation Area – SW 20th Ave
Sugarfoot Prairie Conservation Area – 4415 Clear Lake Rd

Phase II-A (approved March 2013):

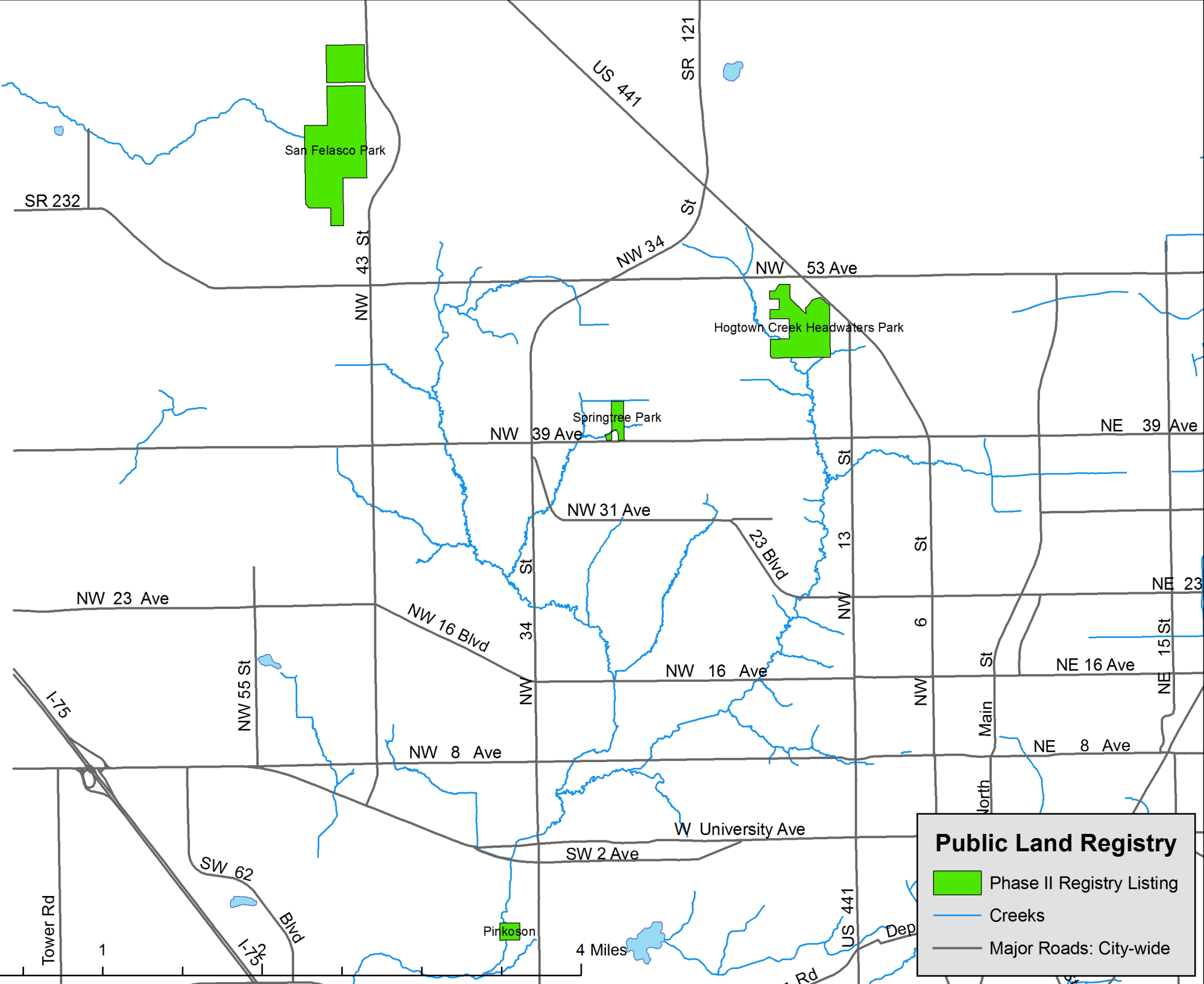
Hogtown Creek Headwaters Nature Park – 1500 NW 45th Ave
Pinkoson Property – east of Green Acres Park and west of 34th St
San Felasco Park – 6400 NW 43rd Way
Springtree Park – 2700 NW 39th Ave



Public Land Registry

-  Phase I Registry Listing
-  Creeks
-  Major Roads: City-wide

0 0.5 1 2 Miles



Sar Felasco Park


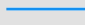

Hogtown Creek Headwaters Park

Springtree Park

NW 39 Ave

Pirkoson

Public Land Registry

-  Phase II Registry Listing
-  Creeks
-  Major Roads: City-wide

0

1

4 Miles