



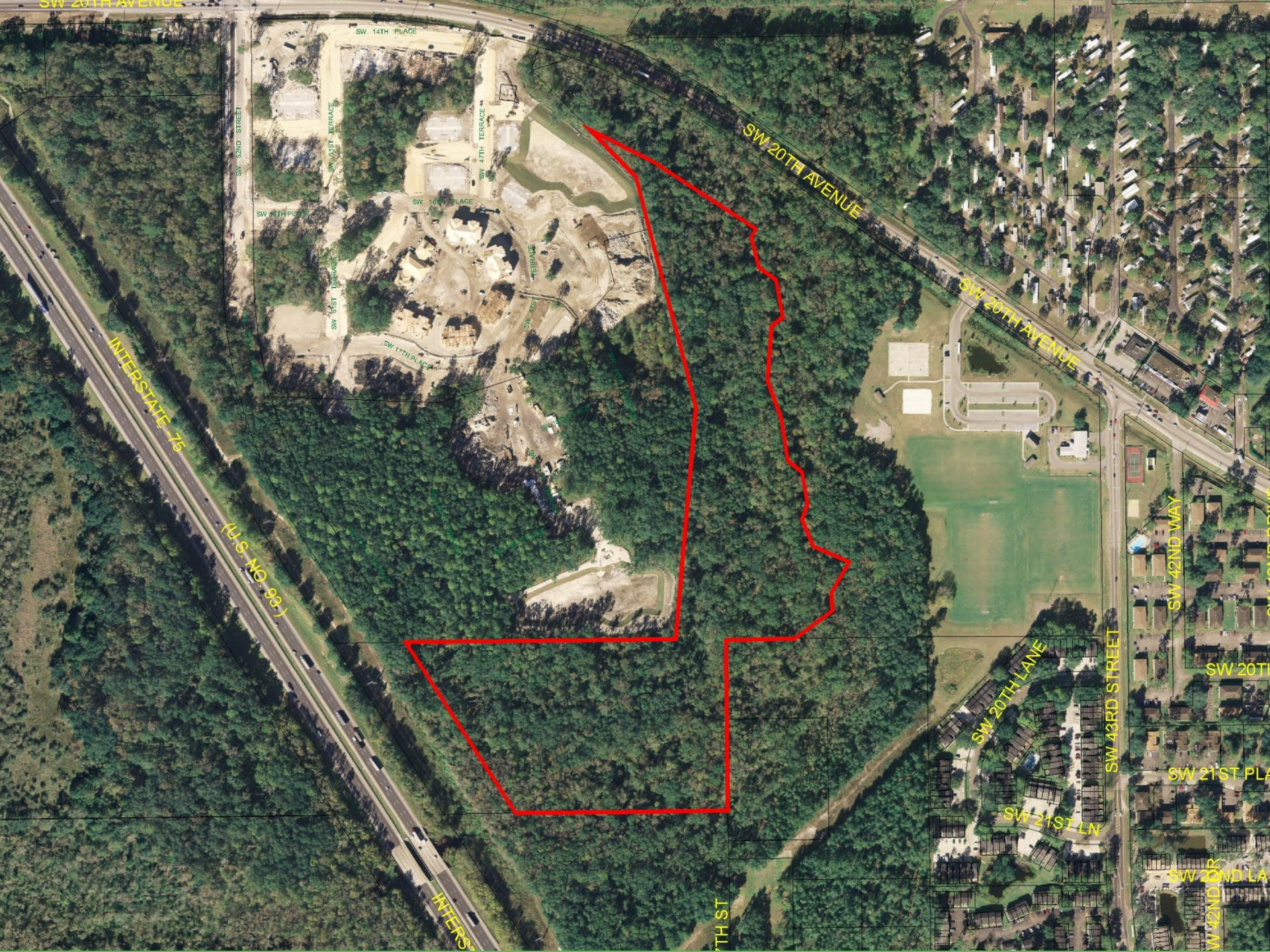
## Planning and Development Department

**PB-10-30ZON**  
**Susan Niemann**  
**2 December 2010**  
(City Legistar No. 100142)

# Forest Park

- **Petitioner is City of Gainesville Parks and Recreation, Nature Operations**
- **One City-owned parcel with dual land use and zoning designations**
- **Requested changes:**
  - **Conservation land use for entire parcel**
- **Staff recommends approval**
- **City Plan Board recommends approval**





SW 20TH AVENUE

SW 14TH PLACE

SW 52ND STREET

SW 51ST TERRACE

SW 47TH TERRACE

SW 20TH AVENUE

SW 45TH PLACE

SW 16TH PLACE

SW 51ST TERRACE

SW 17TH PLACE

SW 20TH AVENUE

INTERSTATE 75

(U.S. NC. 98)

SW 42ND WAY

SW 20TH

SW 20TH LANE

SW 43RD STREET

SW 21ST PL

SW 21ST LN

SW 21ST LN

SW 42ND WAY

INTERSTATE 75

TH ST


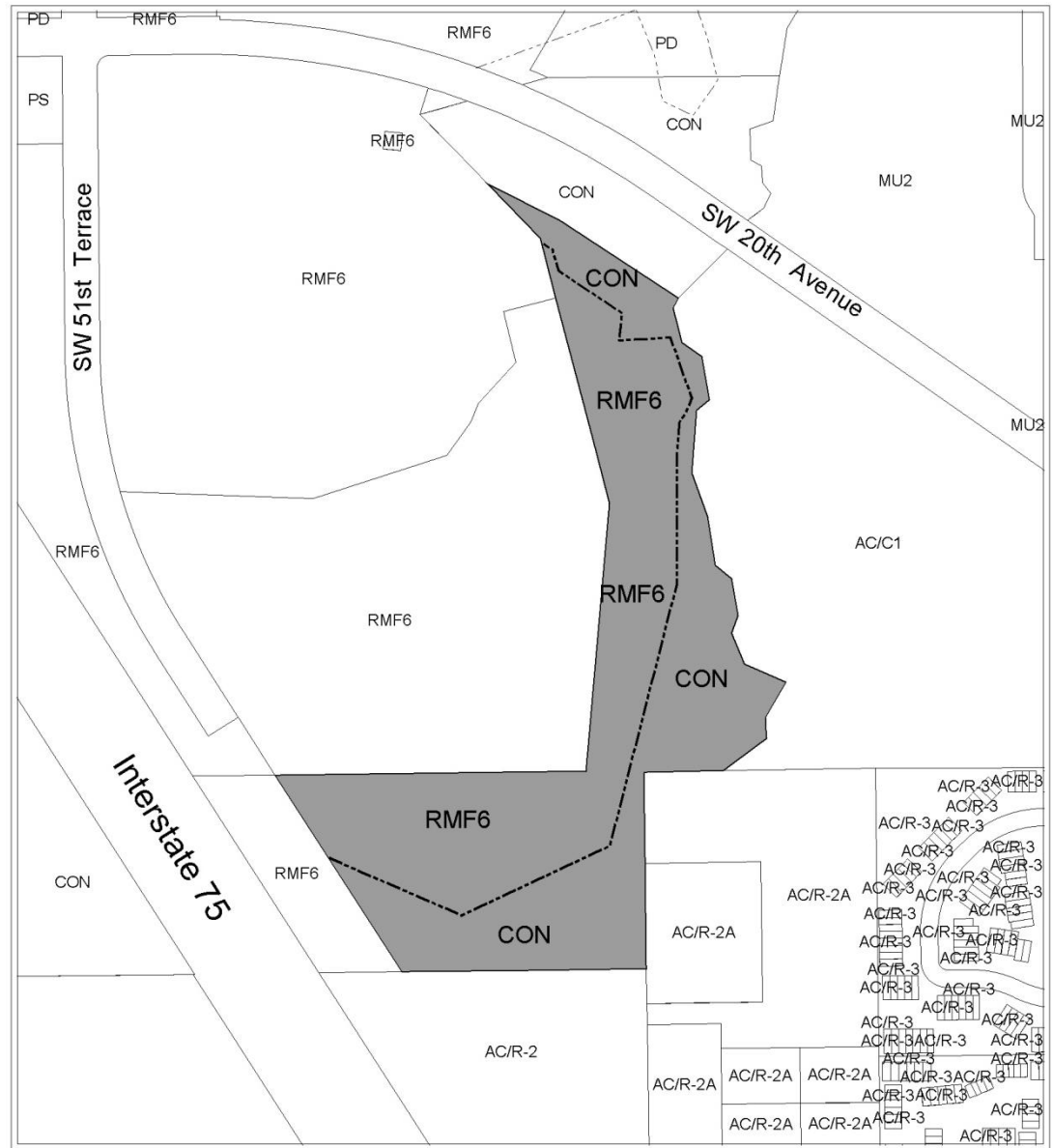


# Zoning District Categories


- RSF1 Single-Family Residential (3.5 du/acre)
- RSF2 Single-Family Residential (4.6 du/acre)
- RSF3 Single-Family Residential (5.8 du/acre)
- RSF4 Single-Family Residential (8 du/acre)
- RSFR Singel-Family Rural Residential (1.0 du/acre)
- RMF5 Residential Low Density (12 du/acre)
- RC Residential Conservation (12 du/acre)
- MH Mobile Home Residential (12 du/acre)
- RMF6 Multiple-Family Medium Density Residential (8-15 du/acre)
- RMF7 Multiple-Family Medium Density Residential (8-21 du/acre)
- RMF8 Multiple-Family Medium Density Residential (8-30 du/acre)
- RMU Residential Mixed Use (up to 75 du/acre)
- RH1 Residential High Density (8-43 du/acre)
- RH2 Residential High Density (8-100 du/acre)
- OR Office Residential (up to 20 du/acre)
- OF General Office
- PD Planned Development
- BUS General Business
- BA Automotive-Oriented Business
- BT Tourist-Oriented Business
- MU1 Mixed Use Low Intensity (8-30 du/acre)
- MU2 Mixed Use Medium Intensity (12-30 du/acre)
- UMU1 Urban Mixed Use District 1 (up to 75 du/acre)
- UMU2 Urban Mixed Use District 2 (up to 100 du/acre)
- CCD Central City District
- BI Business Industrial
- W Warehousing and Wholesaling
- I1 Limited Industrial
- I2 General Industrial
- AGR Agriculture
- CON Conservation
- MD Medical Services
- PS Public Services and Operations
- AF Airport Facility
- ED Educational Services
- CP Corporate Park

- Historic Preservation/Conservation District
- Special Area Plan
- - - - - Division line between two zoning districts
- City Limits

Area  
under petition  
consideration

## EXISTING ZONING


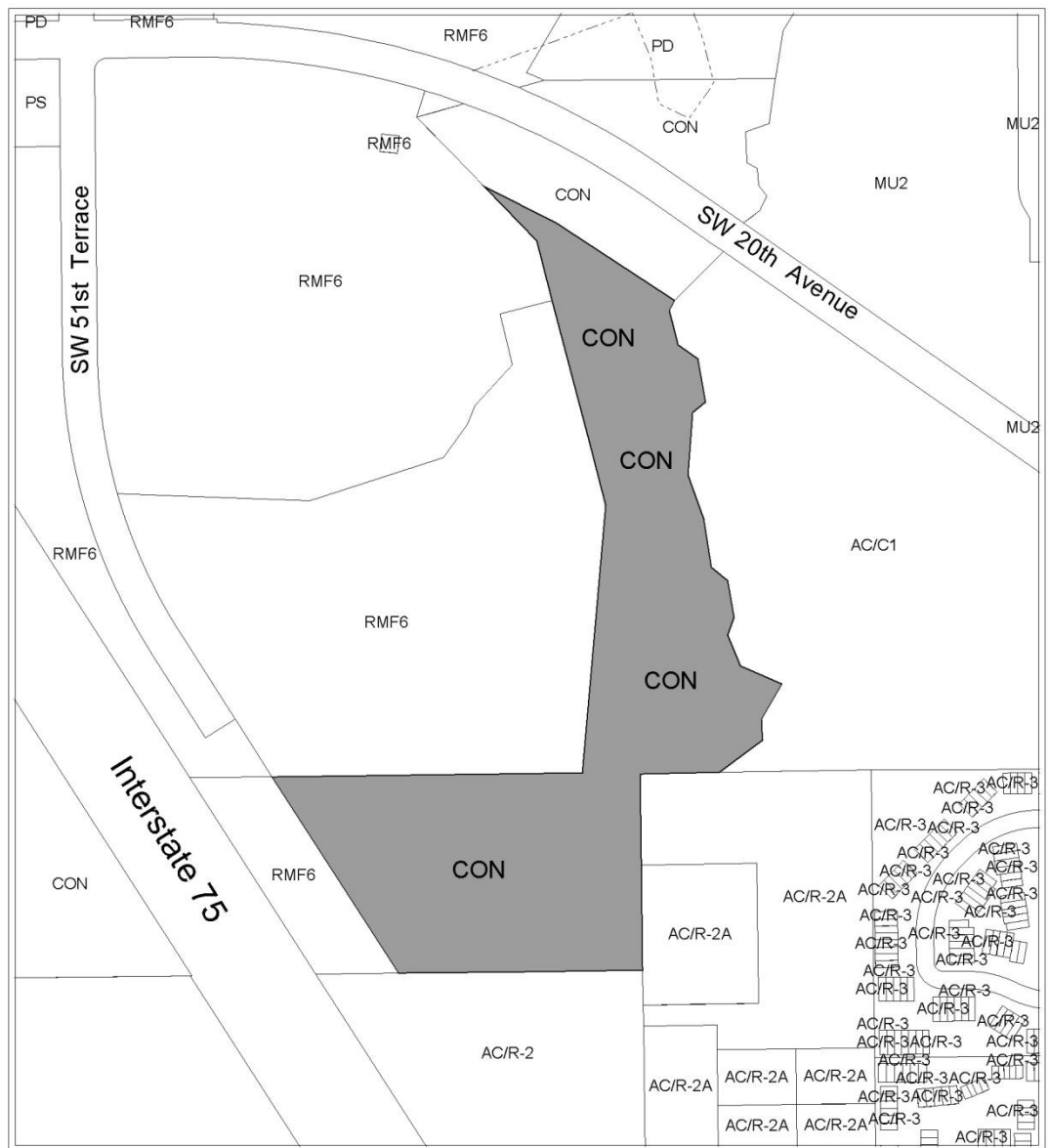
	Name	Petition Request	Map(s)	Petition Number
	Geoffrey Parks, Nature and Parks Division, City of Gainesville, agent for the City of Gainesville	Change Zoning district from RMF6 to Conservation.	4243	PB-10-30 ZON

# Zoning District Categories


- RSF1 Single-Family Residential (3.5 du/acre)
- RSF2 Single-Family Residential (4.6 du/acre)
- RSF3 Single-Family Residential (5.8 du/acre)
- RSF4 Single-Family Residential (8 du/acre)
- RSFR Singel-Family Rural Residential (1.0 du/acre)
- RMF5 Residential Low Density (12 du/acre)
- RC Residential Conservation (12 du/acre)
- MH Mobile Home Residential (12 du/acre)
- RMF6 Multiple-Family Medium Density Residential (8-15 du/acre)
- RMF7 Multiple-Family Medium Density Residential (8-21 du/acre)
- RMF8 Multiple-Family Medium Density Residential (8-30 du/acre)
- RMU Residential Mixed Use (up to 75 du/acre)
- RH1 Residential High Density (8-43 du/acre)
- RH2 Residential High Density (8-100 du/acre)
- OR Office Residential (up to 20 du/acre)
- OF General Office
- PD Planned Development
- BUS General Business
- BA Automotive-Oriented Business
- BT Tourist-Oriented Business
- MU1 Mixed Use Low Intensity (8-30 du/acre)
- MU2 Mixed Use Medium Intensity (12-30 du/acre)
- UMU1 Urban Mixed Use District 1 (up to 75 du/acre)
- UMU2 Urban Mixed Use District 2 (up to 100 du/acre)
- CCD Central City District
- BI Business Industrial
- W Warehousing and Wholesaling
- I1 Limited Industrial
- I2 General Industrial
- AGR Agriculture
- CON Conservation
- MD Medical Services
- PS Public Services and Operations
- AF Airport Facility
- ED Educational Services
- CP Corporate Park

- Historic Preservation/Conservation District
- Special Area Plan
- - - - - Division line between two zoning districts
- ▬ City Limits

Area  
under petition  
consideration

## PROPOSED ZONING

	Name	Petition Request	Map(s)	Petition Number
	Geoffrey Parks, Nature and Parks Division, City of Gainesville, agent for the City of Gainesville	Change Zoning district from RMF6 to Conservation.	4243	PB-10-30 ZON