

# VALUE ENGINEERING

90% Submittal

KOSP

4/4/19

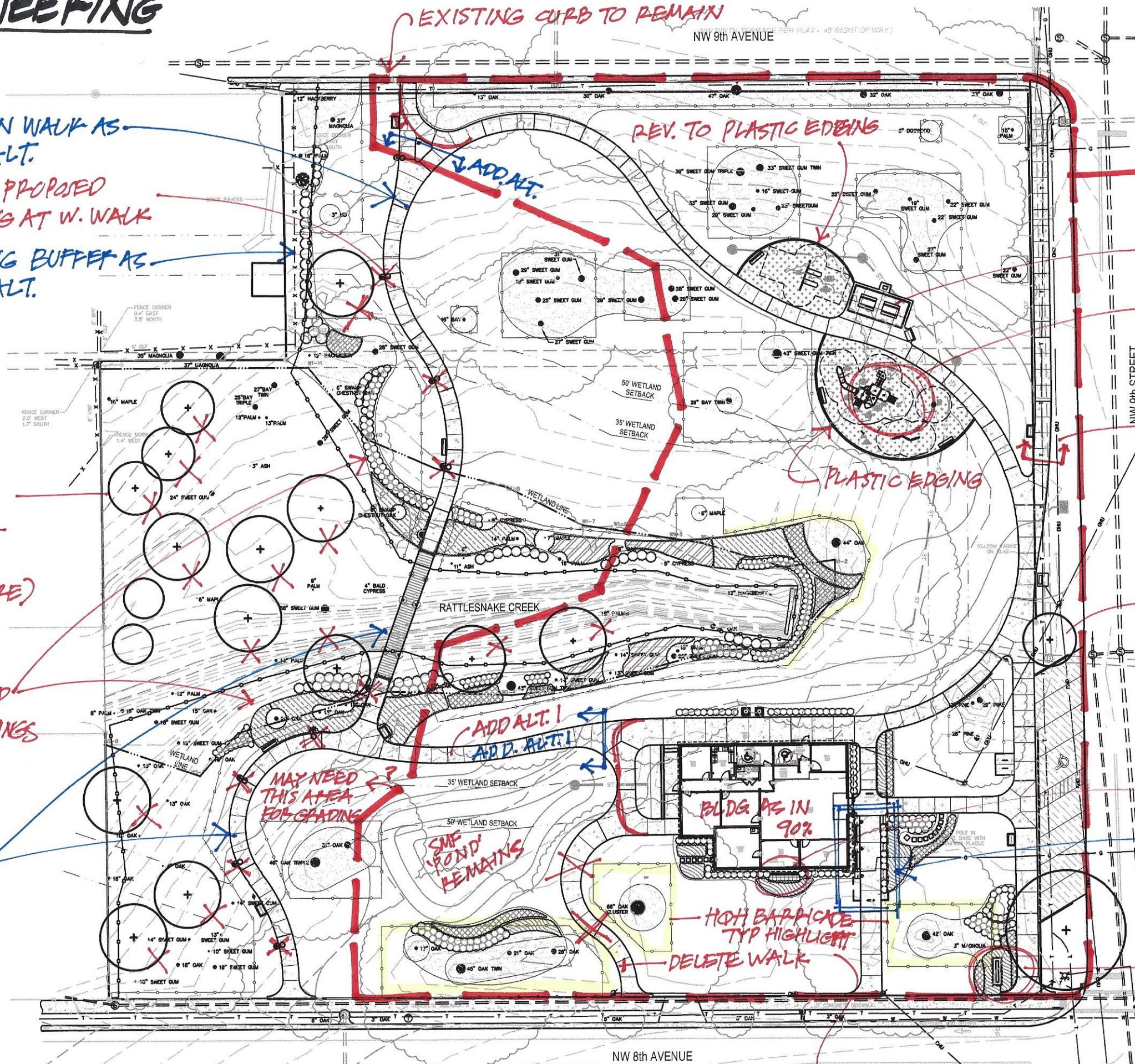
190010E

WESTERN WALK AS  
ADD. ALT.  
DELETE PROPOSED  
LIGHTING AT W. WALK  
PLANTING BUFFER AS  
ADD. ALT.

ELIMINATE ALL TREES  
NOT REQUIRED BY LDP'S -  
RECALCULATE TREE  
MITIGATION (WILL BE MORE)

INVESTIGATE IF PROPOSED  
EXOTICS AREA REPLANTINGS  
CAN BE REDUCED

WESTERN WALK AND  
BRIDGE AS ADD. ALT.



BASE BID  
LIMIT OF WORK

NO PROPOSED POWER OR  
LIGHTING @ PAVILION  
REVISIT PLAY EQUIPMENT  
SELECTION - SIMPLER/VE.

PUBLIC WORKS WILL  
REIMBURSE FOR NEW WALK  
IN RIGHT OF WAY

KEEP TREES AT PARKING

DELETE GREEN SCREEN

CANOPY AS ADD. ALTERNATE

ENTRY SIGN AS ADD. ALT.

HIGH BARRICADE CLARIFICATION - REST ARE TYP. REGULATED