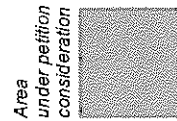


City of Gainesville Land Use Designations

- SF Single Family (up to 8 du/acre)
- RM Residential Medium Density (8-30 du/acre)
- MUL Mixed Use Low Intensity (8-30 du/acre)
- UMU2 Urban Mixed Use 2 (UMU-2: 10 to 100 du/acre; & up to 25 additional du/acre by special use permit)
- IND Industrial
- E Education
- PF Public Facilities



Division line between two land use categories

City Limits



No Scale



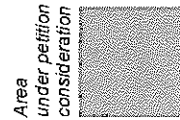
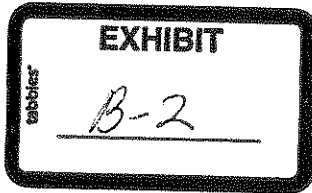
130687D

EXISTING LAND USE

Applicant	Petition Request	Petition Number
Ricardo Cavallino, agent for Ridgway Roof Truss Co, Inc	Amend the City of Gainesville Future Land Use map from Industrial (IND) to Urban Mixed-Use 2 (UMU-2: 10 to 100 units per acre; and up to 25 additional units per acre by special use permit) Related to PB-13-123 ZON	PB-13-122 LUC

City of Gainesville Land Use Designations

- SF Single Family (up to 8 du/acre)
- RM Residential Medium Density (8-30 du/acre)
- MUL Mixed Use Low Intensity (8-30 du/acre)
- UMU2 Urban Mixed Use 2 (UMU-2: 10 to 100 du/acre; & up to 25 additional du/acre by special use permit)
- IND Industrial
- E Education
- PF Public Facilities



----- Division line between two land use categories

— City Limits



130687D

PROPOSED LAND USE

Applicant	Petition Request	Petition Number
Ricardo Cavallino, agent for Ridgeway Roof Truss Co, Inc	Amend the City of Gainesville Future Land Use map from Industrial (IND) to Urban Mixed-Use 2 (UMU-2: 10 to 100 units per acre; and up to 25 additional units per acre by special use permit) Related to PB-13-123 ZON	PB-13-122 LUC



No Scale

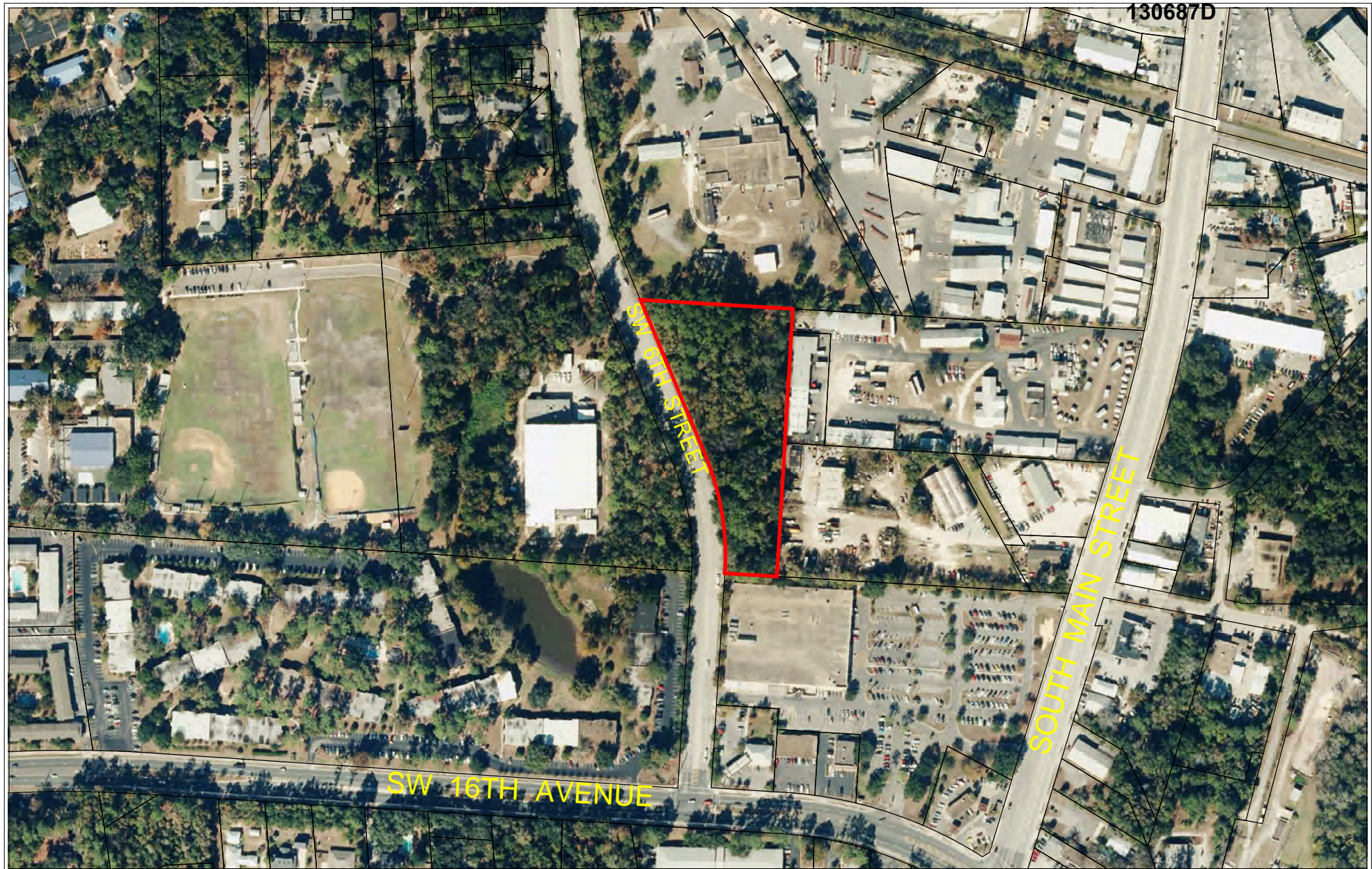
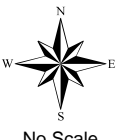


EXHIBIT B-3

AERIAL PHOTOGRAPH

	Name	Petition Request	Petition Number
 <p>No Scale</p>	<p>Ricardo Cavallino, agent for Ridgway Roof Truss Co, Inc</p>	<p>Amend the City of Gainesville Future Land Use map from Industrial (IND) to Urban Mixed-Use 2 (UMU-2: 10 to 100 units per acre; and up to 25 additional units per acre by special use permit) Related to PB-13-123 ZON</p>	<p>PB-13-122 LUC</p>