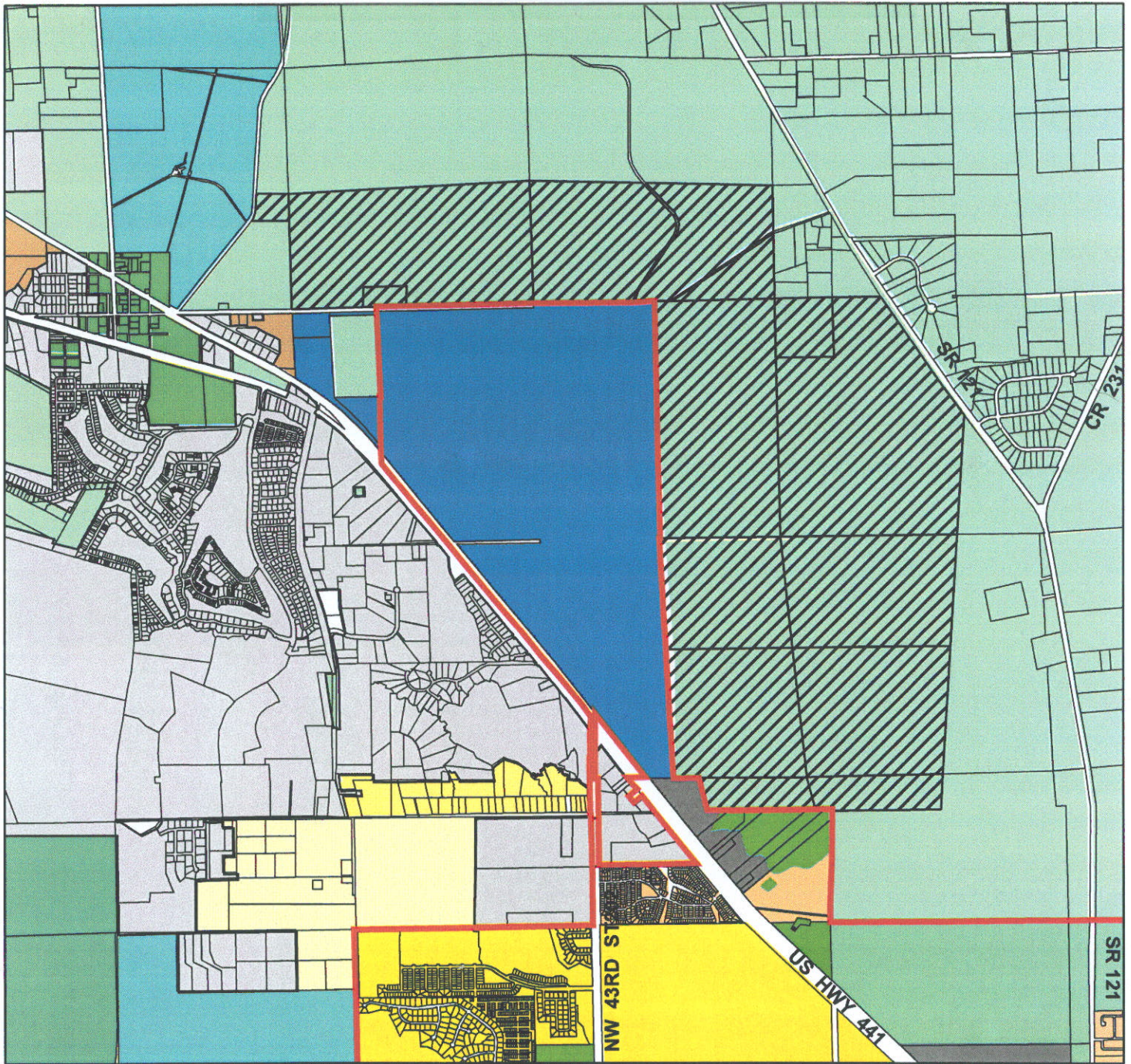




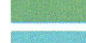


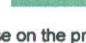


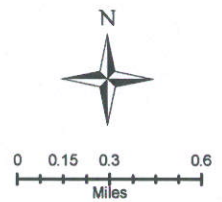
EXHIBIT A



Deerhaven Annexation

-  Annexation Area
-  Gainesville City Limits
- City of Gainesville Land Use Categories**
-  Single Family
-  Residential Low Density
-  Industrial
-  Public Facilities
-  Agriculture
-  Conservation

-  Alachua City Limits
- Alachua County Land Use Categories**
-  Estate Residential
-  Rural/Agriculture
-  Rural Employment Center
-  Rural Cluster
-  Institutional
-  Low Density Residential
-  Preservation



This map is intended to indicate the zoning/land use on the properties as shown. Do not rely on this map for accuracy of dimensions. For specific information, contact the City of Gainesville, Florida. Prepared by the Dept. of Comm. Dev./GIS August 23, 2006

File: Allison-2006\KarenS_Annex_5943_08-23\Karen_S_Annex_Area_FLU_08-23.mxd Modified February 3, 2009 Strg Pln Office