

# ALACHUA COUNTY

# 626109  
7/8/02



The following are broad recommendations (details included in the full report) of the Phase 1 Master Plan based on user surveys, interviews, steering committee input and the analysis performed.

• Implement mission, classification and level of service to reflect a community based approach determined in the Phase 1 Master Plan

• Ensure County, Municipalities and School Board work together to provide recreation opportunities

• Identify and promote Greenways and Trails and their linkages to existing parks and schools

• Promote safe parks and proper maintenance programs for facilities

• Provide facilities to meet current and future needs with adequate flexibility to change over time

• Create facilities that are accessible in terms of costs, location and availability

• Establish cooperative services and responsibilities through collaborative efforts and partnerships

• Establish a permanent countywide dedicated funding source for parks and recreation

• Increase public awareness of recreation programs and facilities available throughout the County

• Promote heritage and eco-tourism

• Evaluate progress and performance while implementing the master plan

• Achieve goals identified in Phase 1 and work towards plan implementation

## Alachua County Park System Improvement Recommendations



Designed by:  
Herbert-Halback, Inc. (HHI)  
315 East Robinson Street, Suite 505  
Orlando, FL 32801  
Phone: 407.422.1449  
www.hhidesign.com



Contact Information:  
Rob Avery  
Director of Parks and Recreation  
Alachua County  
5620 NW 120th Lane  
Gainesville, FL 32653  
Phone: 386.462.2147



## Introduction

Recreation is an important aspect in a community's quality of life. When parks and urban green spaces are carefully integrated into land use patterns, sustainable communities and livable neighborhoods are created. In this backdrop, the Alachua Countywide Recreation Master Plan was drafted with the objective of achieving high quality communities through better recreation facilities programming. The Master Plan Phase 1 specifically elaborates on the following main themes:

- Documents existing parks and recreational facilities and their programs
- Identifies future needs and general locations of new facilities
- Outlines an action plan to start implementation of the plan



## THE RECREATION PROVIDERS OF ALACHUA COUNTY WILL PROVIDE SERVICES TO ALL PEOPLE IN THE MOST EFFICIENT AND EFFECTIVE MANNER.

### A Collaborative Process

The Master Plan is based on a collaborative effort of stakeholders, county residents, and a diverse steering committee comprising of recreation providers and interested citizens. The following course of action furthered the collaborative process:

- User and interest group interviews: One-on-one interviews with 20 recreation user groups totaling 143 people
- Public Workshops: 5 workshops held in February 2001 to get the public's opinions

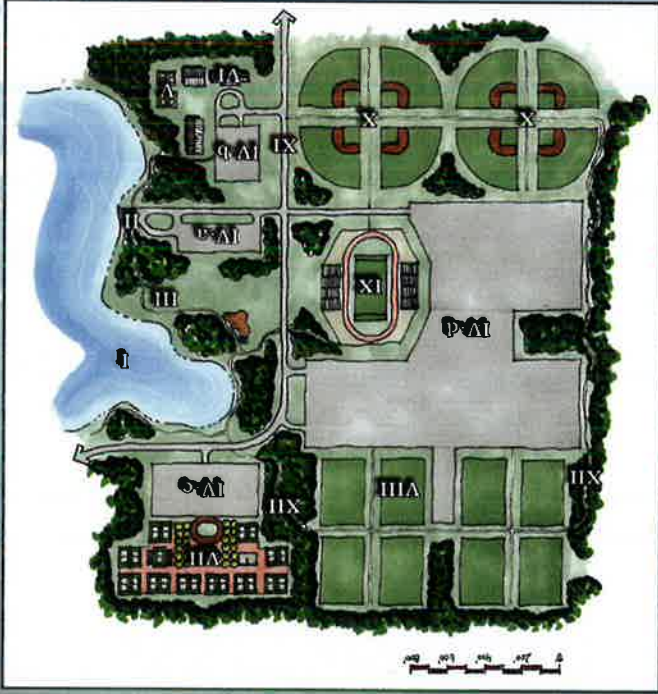
The aspirations expressed in the public participation process are reflected in the Master Plan.



- I. Existing Lake
- II. Boat Launch
- III. Lakertont Park w/Picnic Area & Playground
- IV-a. Parking Lakertont (130 sp.)
- IV-b. Parking Recreation Center (170 sp.)
- IV-c. Parking Tennis Center (250 sp.)
- IV-d. Parking Stadium, Soccer, Baseball (2,560 sp.)
- V. Basketball Court (70' x 110')
- VI. Recreation Center
- VII. Tennis Center/Courts (30' x 70')
- VIII. Soccer Fields (225' x 360')
- IX. Stadium
- X. Baseball Fields (300' R)
- XI. Park Entrance Drive
- XII. Trails

### 3. Competition Level Special Facilities

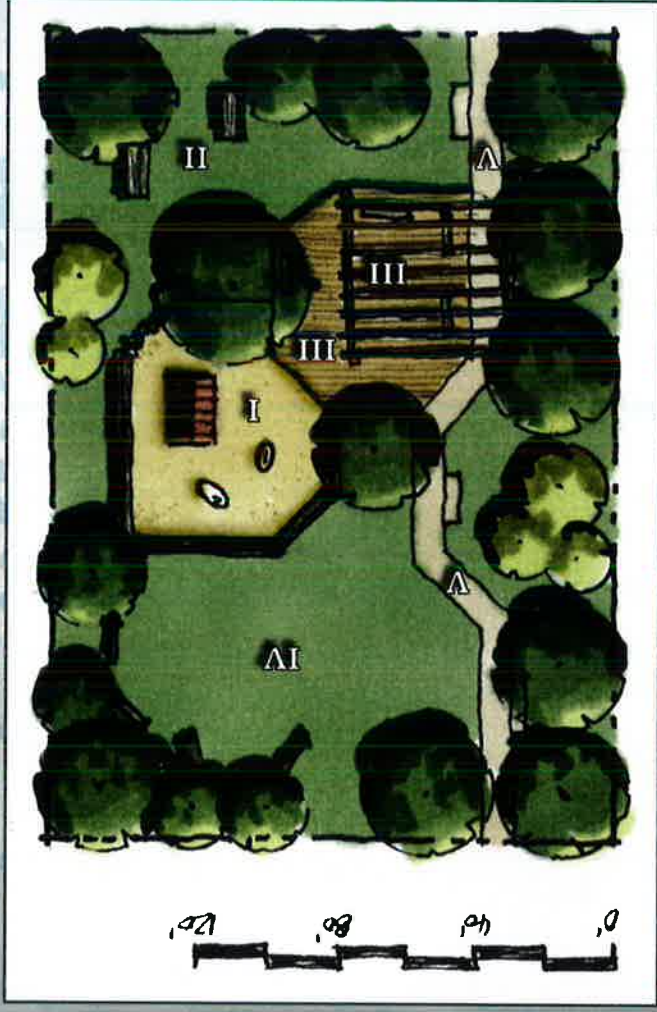
Optimum Area: > 1 acre  
Cost: Greater than \$2,000,000 to \$50,000,000+  
depending on size and amenities



- I. Pre-School Playground
- II. Picnic Area
- III. Sitting Area w/Pergola
- IV. Open Lawn w/Seating
- V. Walkway

### 4. Pocket Park

Optimum Area: > 5 acre  
Cost: Ranges from \$25,000 to \$75,000  
depending on size and amenities





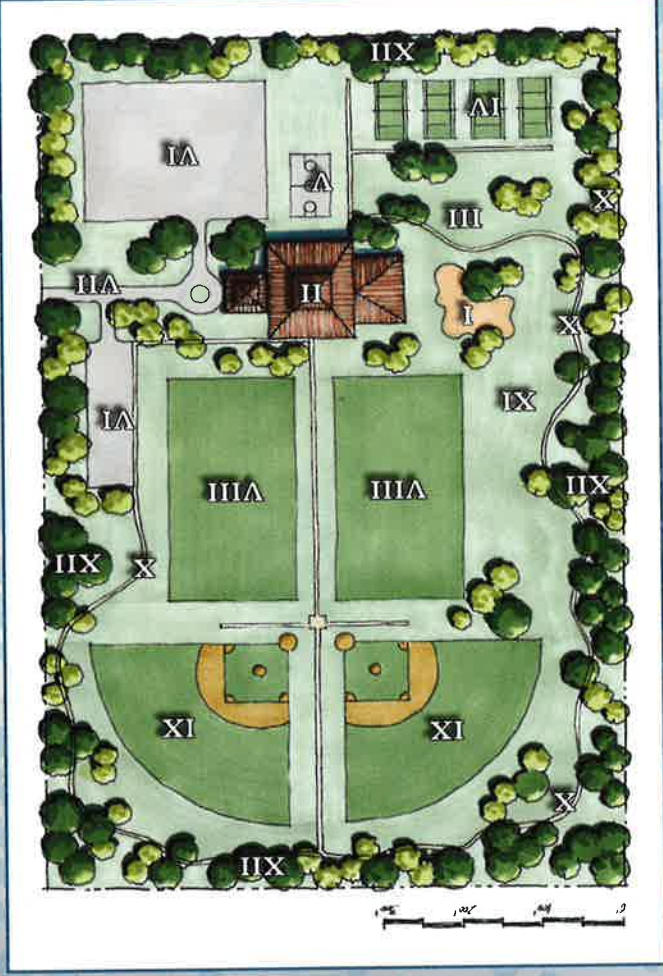
## Prototypical Designs and Costs

The following illustrations represent prototypical park designs and cost estimates for:

1. Neighborhood Parks
2. Community Parks
3. Competition Level Special Facilities
4. Pocket Parks



**1. Neighborhood Park**  
 Optimum Area: 10 acres  
 Cost: Ranges from \$50,000 to \$250,000  
 depending on size and amenities



**2. Community Parks**  
 Optimum Area: Between 20 and 50 acres  
 Cost: Ranges from \$150,000 to \$20,000,000  
 depending on size and amenities

- I. Playground
- II. Recreation Center
- III. Picnic Area
- IV. Tennis Courts (30' x 70')
- V. Basketball Court (70' x 110')
- VI. Parking (200 sp.)
- VII. Park Entrance Drive
- VIII. Multi-Use Fields (150' x 300')
- IX. Baseball Field
- X. Trail
- XI. Open Lawn
- XII. Landscape Buffers

- I. Pre-School Playground
- II. Elementary Playground
- III. Pavilion
- IV. Picnic Area
- V. Basketball Court (70' x 110')
- VI. Open Lawn
- VII. Walking Trail
- VIII. Bike Rack
- IX. Landscape Buffers

## Park System and Classification

The focus is to provide neighborhood, community and special facility parks.

### Neighborhood Parks

Neighborhood parks typically include practice areas, green spaces and playing courts for drop-in games of all types. These parks are usually located adjacent to elementary schools and characteristically range between 5 - 19 acres in size. They are accessible by bicycle or a short drive by car. Neighborhood parks are generally not designed for extensive programmed recreation activities.

### Community Parks

Community parks typically include facilities such as athletic fields, swimming pools, multi-purpose fields and recreation centers. Characteristically ranging between 20 - 50 acres in size, they are adjacent to schools and other community services such as libraries. Community parks generally support a wide range of athletic or team sports activities.

### Resource-Based Special Facilities

Resource-based special facilities are sites that protect, preserve and provide access to natural or cultural resources within the community. The majority of Alachua County's facilities are resource-based.

### Competition Level Special Facilities

Competition level special facilities are typically more intensively developed and/or programmed than community parks. Facilities are designed for tournament play for a single activity such as a tennis center or multiple facilities such as soccer, baseball, football and swimming.

### Pocket Parks

Pocket parks may be either natural or landscaped sites located within neighborhoods or urban areas. Characteristically less than 5 acres in size, they may include walks, benches, garden and other amenities. Generally no planned recreational programming occurs in pocket parks.

The table shows the number, amount of acreage and types of existing parks in Alachua County.

Park Type	Number	Total Acres
Neighborhood Parks	29	225.8
Community Parks	24	878.7
Special Facilities*	30	2,082.9

\* The majority of special facilities are resource-based.

## Future Park Needs in Alachua County

The table shows the future park needs in Alachua County over the next 20 years based on a demographic analysis. GIS service area analysis, and comparison with the State Comprehensive Outdoor Recreation Plan (SCORP). The number of parks is based on optimum sizes. Resource-based special facilities should be acquired based on the need to protect, preserve and provide public access to significant natural or cultural resources.

Park Type (Optimum Size)	Number	Total Acres
Neighborhood Parks (10 acres)	41	339
Community Parks (20 to 50 acres)	4	111
Competition Level Special Facilities (>1 acre)*	1	≈ 100

\* Tournament Grade Sports Complex



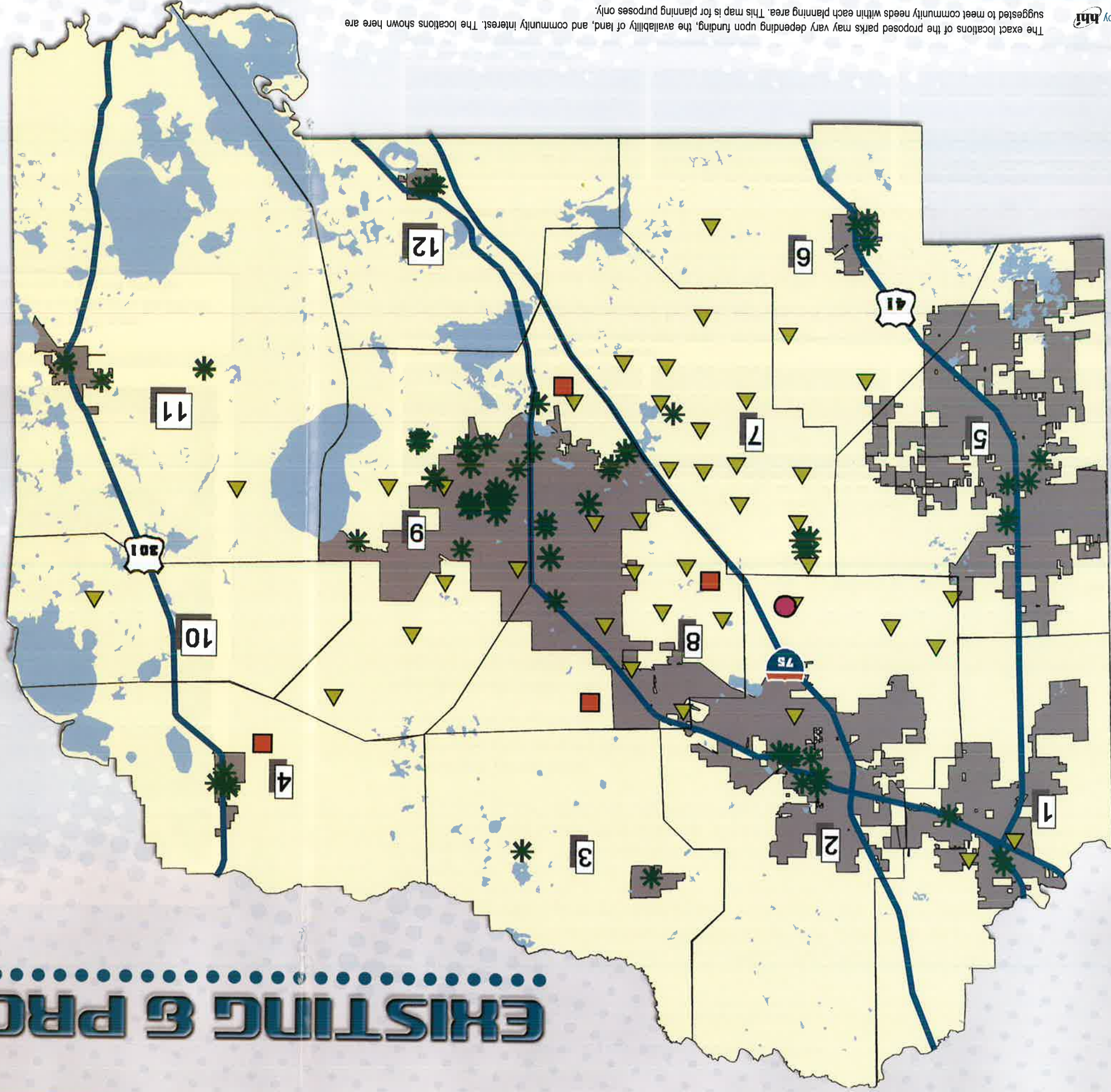
# EXISTING & PROPOSED PARRHS

## LEGEND

- Proposed Community Parks
- ▼ Proposed Neighborhood Parks
- Competition Level Special Facility
- ✱ Existing and Planned Neighborhood and Community Parks

## Park Planning Areas

- 1 Planning Area 1 - High Springs
- 2 Planning Area 2 - Alachua
- 3 Planning Area 3 - LaCrosse
- 4 Planning Area 4 - Waldo
- 5 Planning Area 5 - Newberry
- 6 Planning Area 6 - Archer
- 7 Planning Area 7 - Western Suburban
- 8 Planning Area 8 - West Gainesville
- 9 Planning Area 9 - East Gainesville
- 10 Planning Area 10 - Rural Eastern Alachua County
- 11 Planning Area 11 - Hawthorne
- 12 Planning Area 12 - Micanopy



The exact locations of the proposed parks may vary depending upon funding, the availability of land, and community interest. The locations shown here are suggested to meet community needs within each planning area. This map is for planning purposes only.