



Planning and Development Services

CC-13-37

Oak Park Plat Vacation

Partial vacation of subdivision at the
SE corner of NW 23rd Ave and 13th St
(Legistar No. 121037)

5/16/13



121037G

2300

2225

10
11
12
13
14

223

1215

1205

9
8
7
6
5
4
3
2
15
16
17
18
19
20
21
22
23

2202

1216

1208

2224

2210

2206

2120

2111

2109

2107

13
14

2209

9
8
7
6
5
4
3

1221

1216

1205

15
16
17
18
19

20
21

22
23

2102

D

230

Mixed Use Medium

121037G

113

2224

2210

2206

2120

2225

10

11

12

13

14

9

8

7

6

5

1223

L

Mixed Use Low

1215

1205

4

3

2

Office

20

21

22

23

2202

1216

1206

2111

10

11

2109

12

2107

13

14

1221

2209

9

8

7

6

5

M

1215

1205

4

3

2

1

20

21

22

23

2102

112

1

1

1

121037G



121037G



State Highway 120

121037G

N



121037G

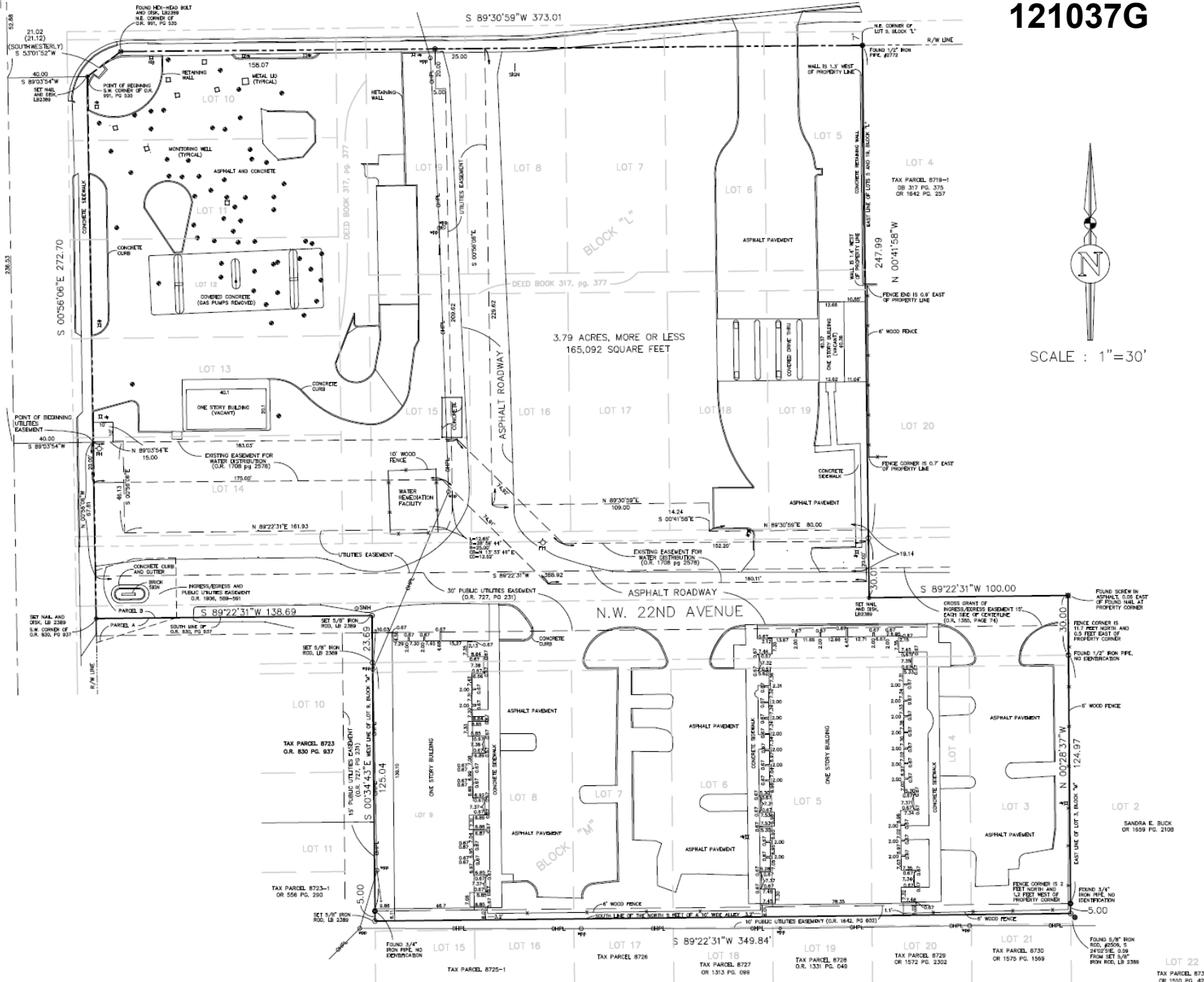
N

Northwest 22nd Avenue

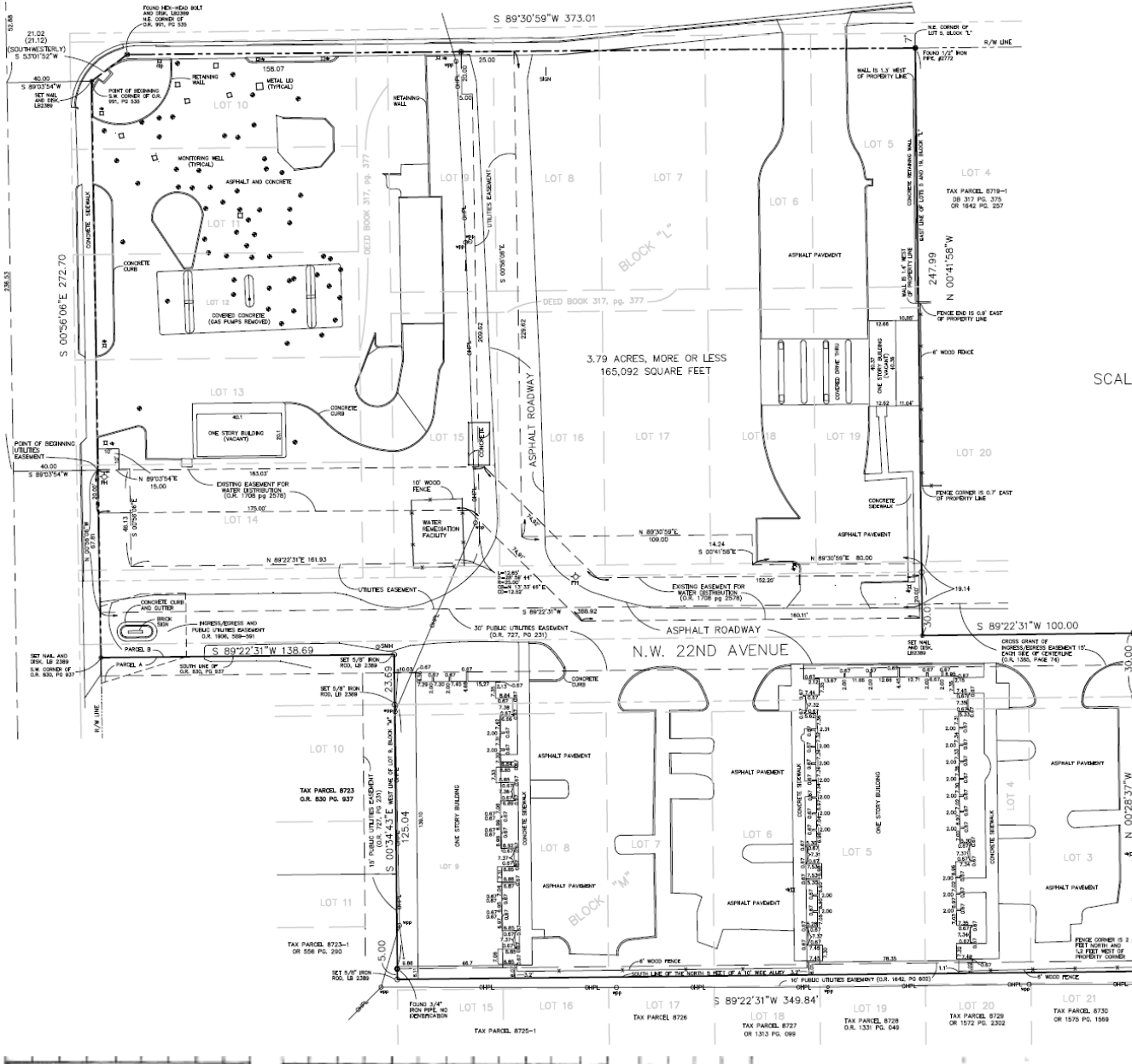
121037G



Northwest 22nd Avenue

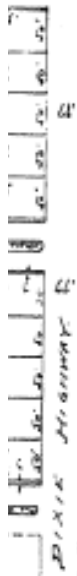


SCALE : 1"=30'



SCALE : 1" = 30'

10
11
12
13
14
10
11
12
13
14
15
16
17
18
19
20
21
22



SANDRA E. BUCK OR 1559 PG. 2100

Staff Recommendation:

**Approval of partial vacation of Oak
Park subdivision (CC-13-37)**