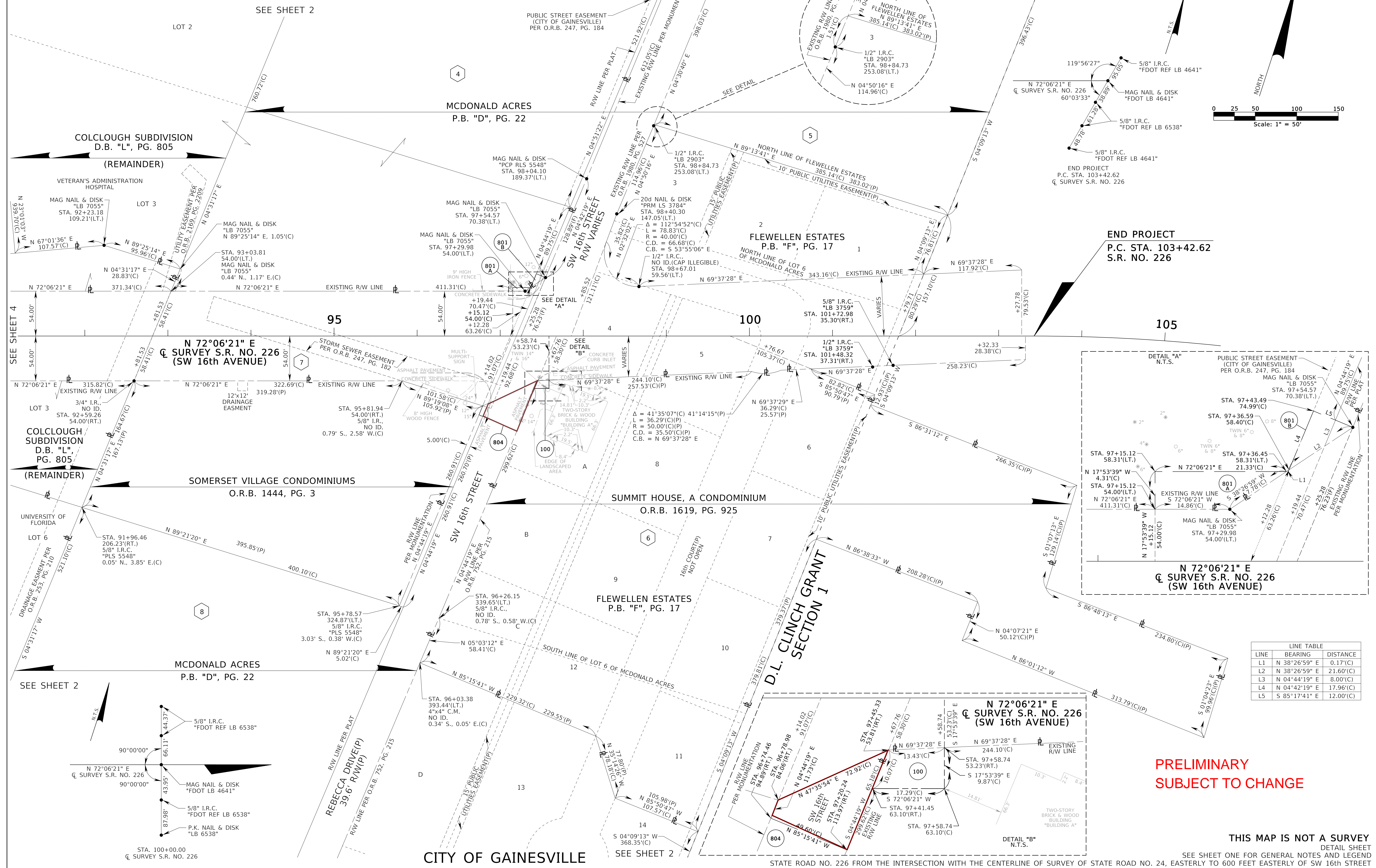


D.L. CLINCH GRANT, SECTION 1,
SECTION 7, TOWNSHIP 10 SOUTH, RANGE 20 EAST

Registar ID#150367A



END PROJECT
P.C. STA. 103+42.62
S.R. NO. 226

**PRELIMINARY
SUBJECT TO CHANGE**

THIS MAP IS NOT A SURVEY
DETAIL SHEET

SEE SHEET ONE FOR GENERAL NOTES AND LEGEND

LINE	BEARING	DISTANCE
L1	N 38°26'59" E	0.17'(C)
L2	N 38°26'59" E	21.60'(C)
L3	N 04°44'19" E	8.00'(C)
L4	N 04°44'19" E	17.96'(C)
L5	S 85°17'41" E	12.00'(C)

RIGHT OF WAY MAP

FLORIDA DEPARTMENT OF TRANSPORTATION
RIGHT OF WAY MAPPING

APPROVED BY: _____ DATE: MAY 27, 2014
DISTRICT RIGHT OF WAY SURVEYOR

REVISION	BY	DATE	REVISION	BY	DATE
PRELIM	C QUINN	05/29/14			
FINAL					
CHECKED	J STUKEY	01/15/15			

BY: _____ DATE: _____
F.A.P. NO. N/A
STATE ROAD NO. 226

SECTION 26004
ALACHUA COUNTY

MAPS PREPARED BY:
VOLKERT, INC. LB #4611
3901 SOUTH MAIN ST., SUITE 2
GAINESVILLE, FL 32601
(352) 372-9594

DATA SOURCE:
SEE GENERAL NOTES
SCALE: 1" = 50'
SHEET 5 OF 7