



## Planning and Development Services

# BUTLER PLAZA

## PB-12-149

### Small-Scale Land Use Amendment

5/29/13

121106D

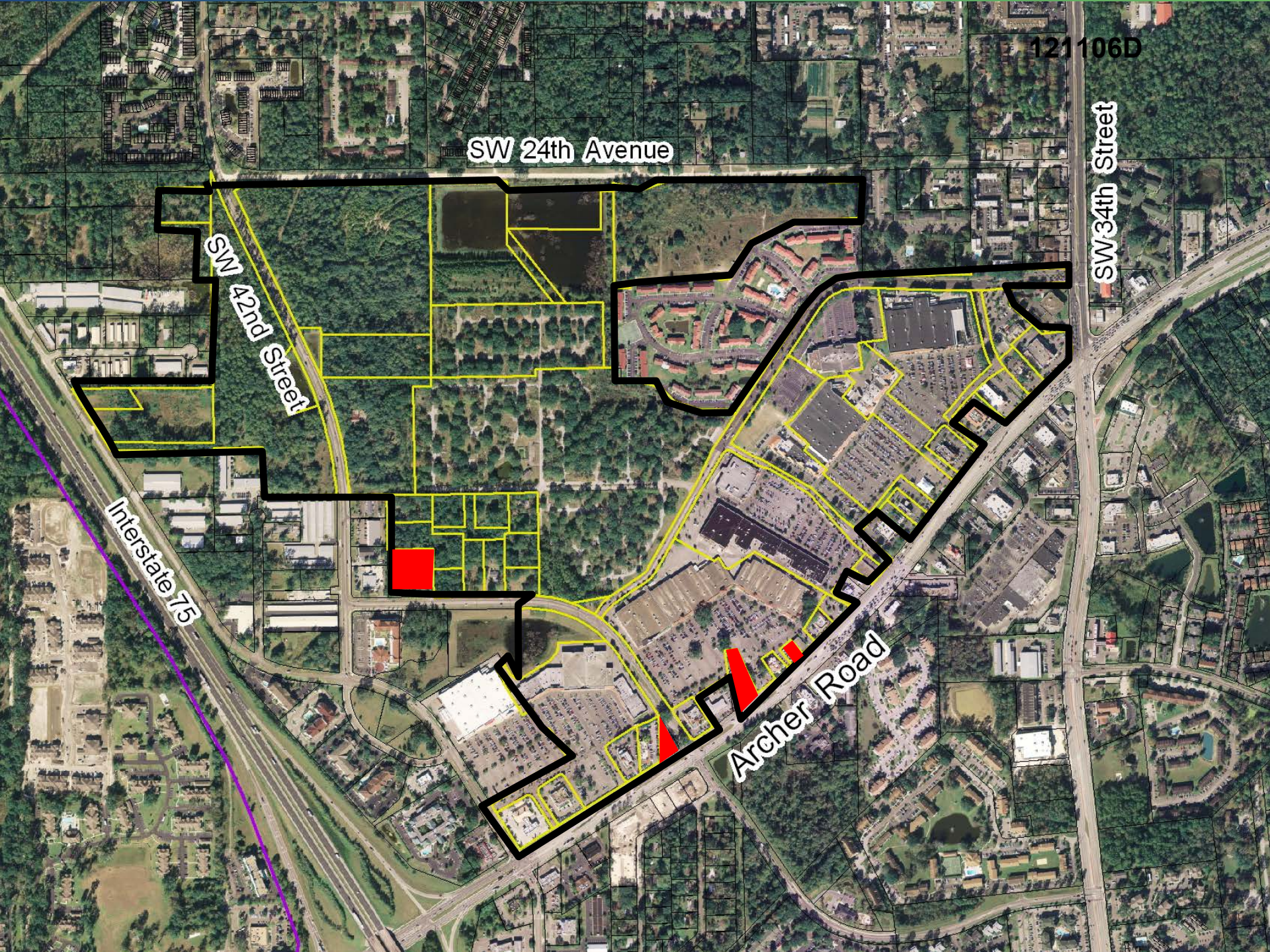
SW 24th Avenue

SW 42nd Street

SW 34th Street

Interstate 75

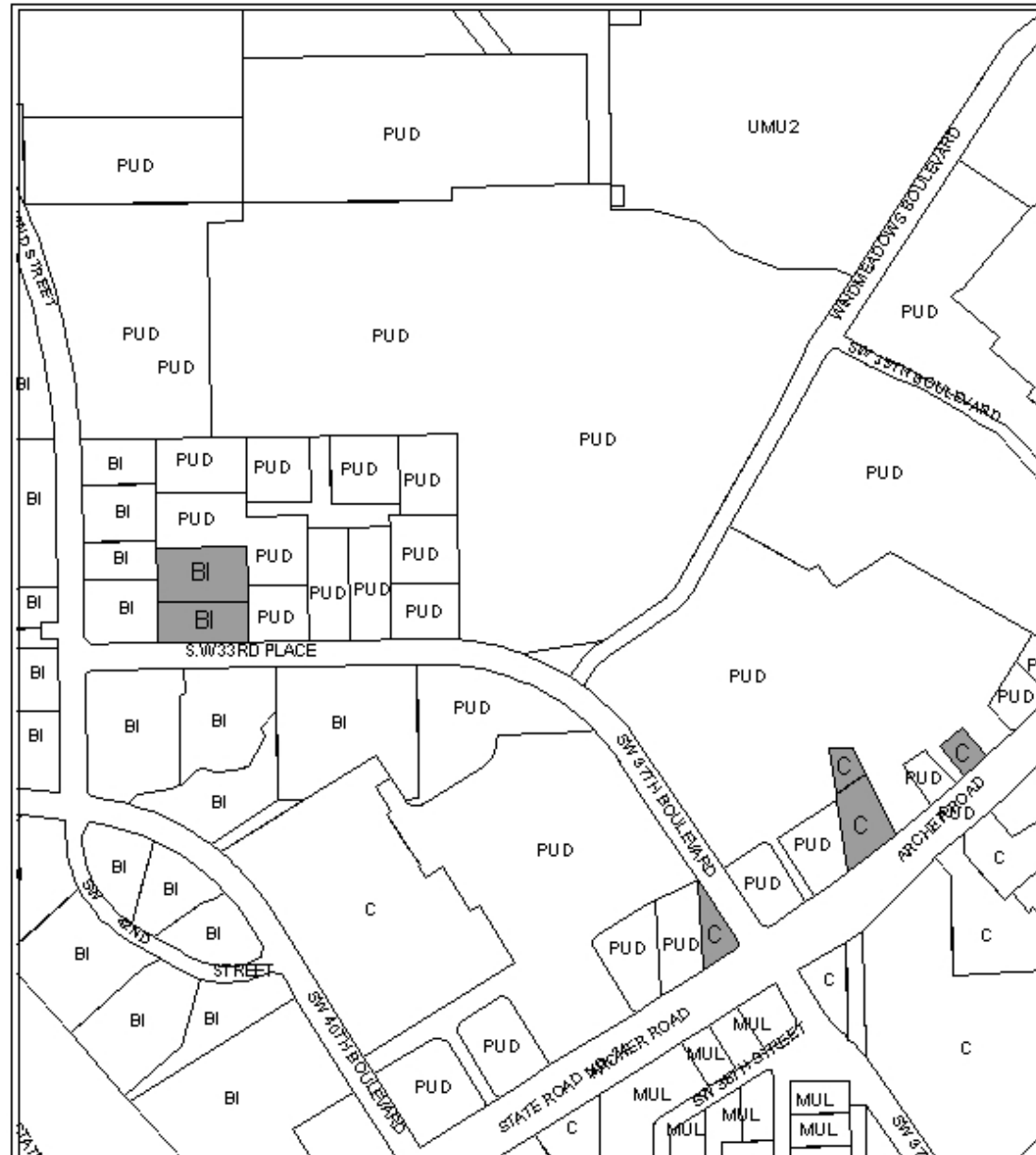
Archer Road



# Existing Land Use Designations

## City of Gainesville Land Use Designations

- MUL Mixed Use Low Intensity (8-30 du/acre)
- UMU2 Urban Mixed Use 2 (UMU-2: 10 to 100 du/acre; & up to 25 additional du/acre by special use permit)
- C Commercial
- BI Business Industrial
- PUD Planned Use District



— City Limits

Area  
under petition  
on side station



# Underlying Land Use Designations



121106D



SW 33 PL

© 2013 Google

Google earth

121106D

2



121106D



121106D



© 2013 Google

Google earth



# Staff Recommendation:

**Approval of Butler Plaza Small-Scale  
Land Use Amendment (*PB-12-149*)**